

Board of Adjustment **Notification Plan for** **Case No A-15-061**



San Antonio City Limits



Subject Property



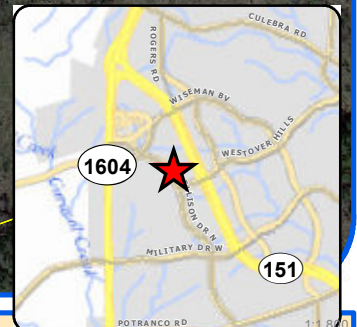
200' Notification Boundary



Council District: 6

"NOT TO SCALE,
 FOR ILLUSTRATIVE PURPOSES ONLY"

Development Services Department
 City of San Antonio



Board of Adjustment **Notification Plan for** **Case No A-15-061**



San Antonio City Limits



Subject Property



200' Notification Boundary



Council District: 6

"NOT TO SCALE,
 FOR ILLUSTRATIVE PURPOSES ONLY"

Development Services Department
 City of San Antonio

PVT ST AT
11212 STATE
HWY 151

CHRISTUS PKWY

CHRISTUS HILLS



Variance Request: 1) a request for a variance from the prohibition of inflatable temporary signs to allow an inflatable sign to be used for a four month period.

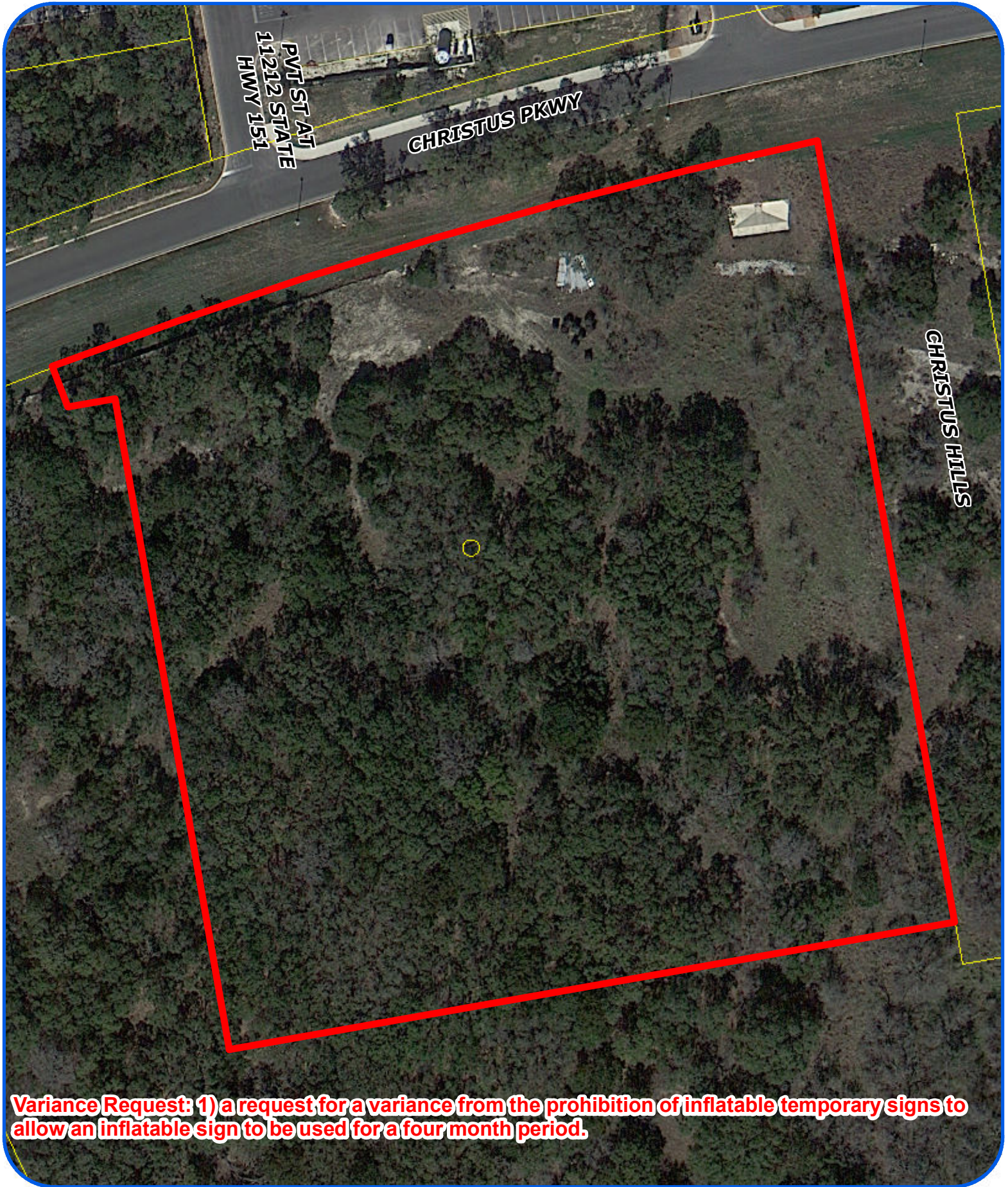
Board of Adjustment
Plot Plan for
Case No A-15-061



"NOT TO SCALE,
FOR ILLUSTRATIVE PURPOSES ONLY"
Council District: 6

11130 Christus Hill ^{1:900}

Development Services Department
City of San Antonio



Variance Request: 1) a request for a variance from the prohibition of inflatable temporary signs to allow an inflatable sign to be used for a four month period.

Board of Adjustment
Plot Plan for
Case No A-15-061



"NOT TO SCALE,
FOR ILLUSTRATIVE PURPOSES ONLY"
Council District: 6

11130 Christus Hill ^{1:900}

Development Services Department
City of San Antonio



HEALTHCARE/COMMERCIAL
CONSULTING/PLANNING DESIGN

6360 PARK TEN BLVD.
SUITE 202 NORTH
SAN ANTONIO, TX 78213
210.734.5395



SITE PLAN
for CHRISTUS
Santa Rosa
Medical Plaza 3

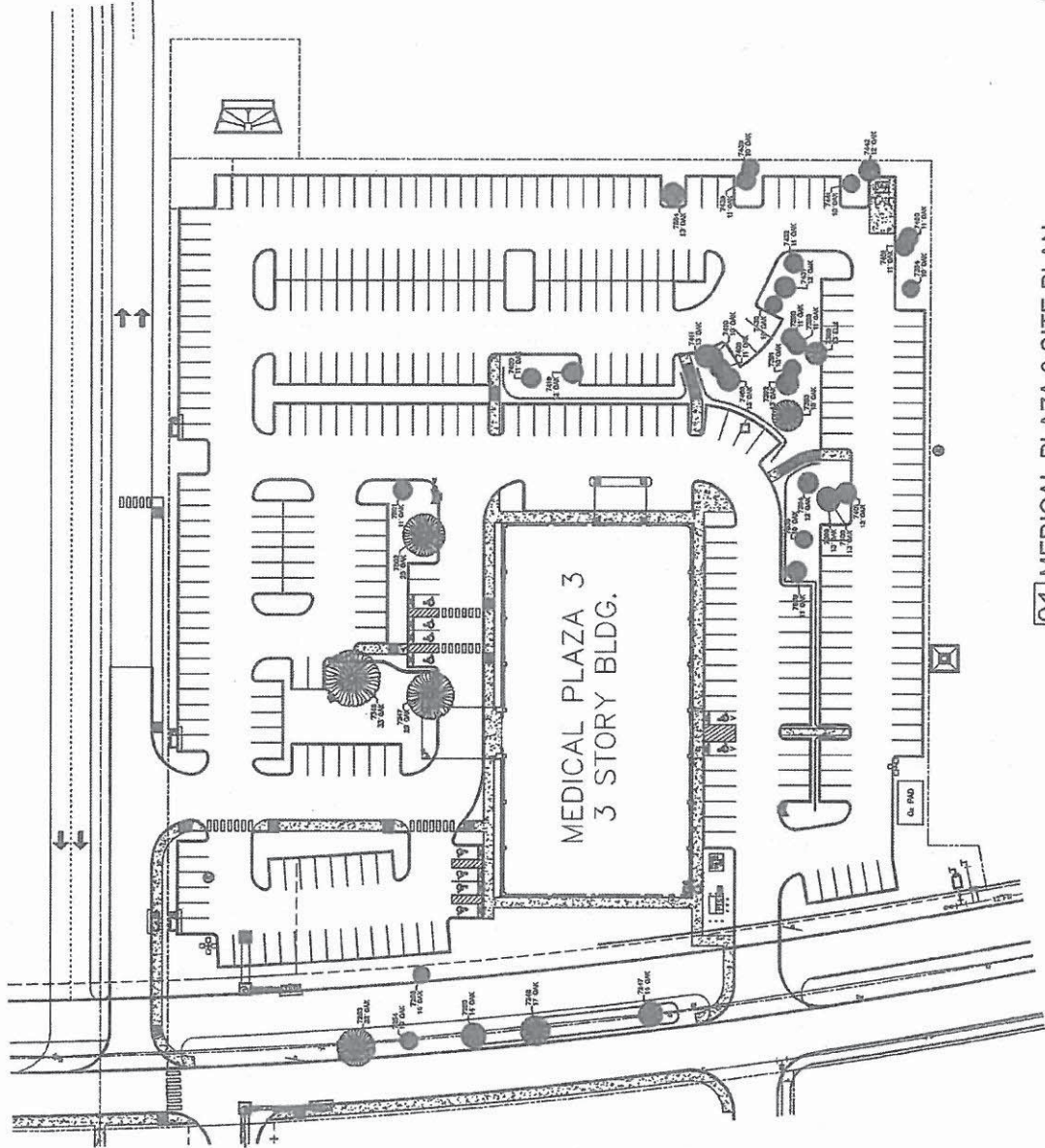
11212 S.H. 151
San Antonio, Texas 78251

DATE: March 5, 2015
DRAWN BY: LRS
DESIGNED BY: LRS
NO. 1: SCALE: 1"=30'-0"

SHEET TITLE:
SITE PLAN

SHEET NO.

SITE



01 MEDICAL PLAZA 3 SITE PLAN
SCALE: 1"=30'-0"



Medical Plaza 3





Main Entrance to Hospital Campus



Medical Office Building 3



Building for proposed inflatable

