

HISTORIC AND DESIGN REVIEW COMMISSION

May 06, 2015

Agenda Item No: 9

HDRC CASE NO: 2015-167
ADDRESS: 434 S ALAMO ST
LEGAL DESCRIPTION: NCB 13814 BLK 3 LOT NW IRR 585.34 FT OF 12 REMAINS - PLAT 9569/36//2014-SPLIT PER DEEDS 16485/42, 50, 61, 69,77 & 87 EX 12/18/13
ZONING: D H HE RIO-3
CITY COUNCIL DIST.: 1
DISTRICT: Hemisfair Historic District
APPLICANT: Alex Gamble/Transportation & Capital Improvements - Vertical Division
OWNER: Gary Boyd/Hemisfair
TYPE OF WORK: Playground equipment installation / furniture design
REQUEST:

The applicant is requesting a Certificate of Appropriateness for approval to:

Install playground equipment in the Yanaguana Garden and have the design of site furniture for the Yanaguana Garden approved. Both the playground equipment and furniture are designs of Oscar Alvarado.

APPLICABLE CITATIONS:

UDC Section 35-651. Eligible and Ineligible Public Art and Design Enhancements

(a) Eligible Public Art and Design Enhancements. It is the policy of the City of San Antonio that all public art and design enhancements commissioned or acquired through PASA are designed by an artist, craftsman or an artist or craftsman in collaboration with the project architect, landscape architect or engineer. Such artworks may include, but are not limited to the following:

- (1) The incremental costs of infrastructure elements, such as sound-walls, utility structures, roadway elements and other items if designed by an artist or design team that includes an artist co-designer.
- (2) Artistic or aesthetic elements of the overall architecture or landscape design if created by a professional artist or a design team that includes a professional visual artist.
- (3) Earthworks, neon, glass, mosaics, photographs, prints, calligraphy, any combination of forms of media including sound, literary elements, film, holographic images, and video systems; hybrids of any media and new genres.
- (4) Murals or portable paintings in any material or variety of materials.
- (5) Sculpture: freestanding, wall supported, or suspended; kinetic and electronic in any material or combination of materials.
- (6) Temporary artworks or installations, if such artworks serve the purpose of providing community and educational outreach purposes.
- (7) Public art and design enhancements that are an integral part of architecture, landscape architecture, and landscape design.

FINDINGS:

- a. The applicant has proposed to install multiple sculptures within the new Yanaguana Garden Park. The installations consist of two (2) benches, and one (1) sculpture. The benches, "Anhinga" and "Blue" Spiral will surround the new play area. The proposed sculpture, "Blue Panther" is a climbable feature for the playground.
- b. The benches and sculpture's concept is the story of an anhinga bird emerging from a hole in the ground being chased by a "Blue" panther that late emerges from the same hole. As the bird flies up, a drop of water falls from its wing onto the ground. This drop of water created the "Blue" Spiral that is the source of water for the San Antonio River.
- c. The "Blue" Spiral bench will depict a large blue circle in the center of the bench with swirls of blue spiraling from it. These two swirls will flow outward opposite each other toward the two ends of the bench. These swirls will undulate

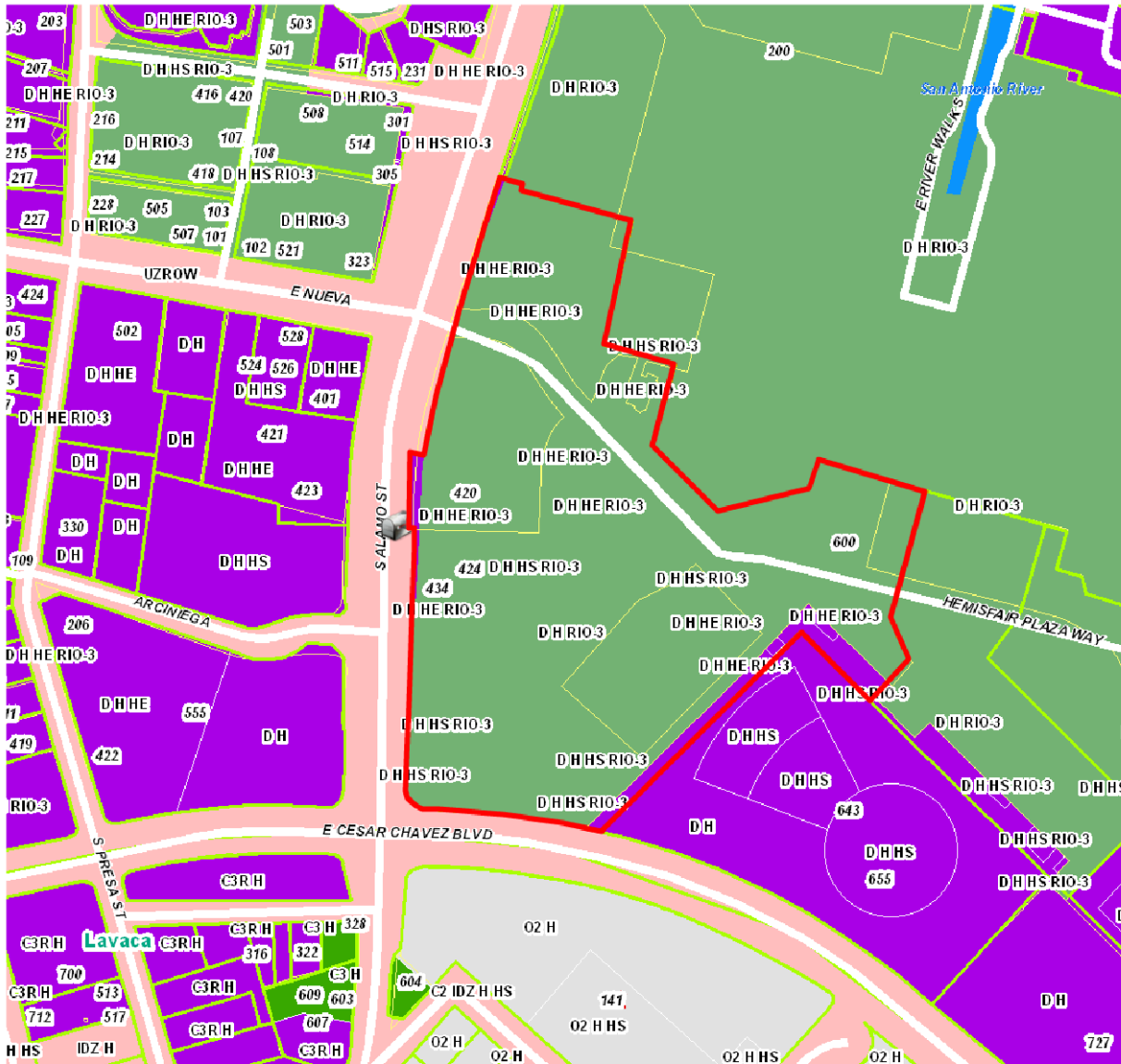
- like a sine wave and grow from the bench seat to create a bench back that allows seating from both sides.
- d. The “Anhinga” bench will be adjacent to the “Blue” Spiral bench and will have a bird morphing from the back up into the air. The wings will appear to be wet and the bird will be gazing slightly upward toward the sky.
 - e. The “Blue Panther” will be across from the “Anhinga” bench and will be a “climbable” feature situated on a mound within the play area.
 - f. According to the UDC Section 35-65, artworks should include artistic or aesthetic elements of the overall landscape design if designed by an artist or design team, Earthworks, neon, glass, mosaics, photographs, prints, calligraphy, any combination of forms of media including sound, literary elements, film, holographic images, and video systems; hybrids of any media and new genres, sculptures that are freestanding, wall supported or suspended and public art that is an integral part of architecture, landscape architecture and landscape design. This proposal is consistent with the UDC.

RECOMMENDATION:

Staff recommends approval as submitted based on findings a through f.

CASE MANAGER:

Edward Hall





Flex Viewer

Powered by ArcGIS Server

Printed: Apr 28, 2015

The City of San Antonio does not guarantee the accuracy, adequacy, completeness or usefulness of any information. The City does not warrant the completeness, timeliness, or positional, thematic, and attribute accuracy of the GIS data. The GIS data, cartographic products, and associated applications are not legal representations of the depicted data. Information shown on these maps is derived from public records that are constantly undergoing revision. Under no circumstances should GIS-derived products be used for final design purposes. The City provides this information on an "as is" basis without warranty of any kind, express or implied, including but not limited to warranties of merchantability or fitness for a particular purpose, and assumes no responsibility for anyone's use of the information.



CITY OF SAN ANTONIO
TRANSPORTATION & CAPITAL IMPROVEMENTS

April 13, 2015

Adriana Ziga
City of San Antonio
Office of Historic Preservation
1901 S. Alamo
San Antonio, Texas 78204

**Re: Historic & Design Review Commission Application Form
Sculpture Surrounding the Play Area in Yanaguana Garden Park**

Ms. Ziga,

Transportation & Capital Improvements (TCI) is pleased to submit a description of the work for the above referenced project.

Hemisfair - Yanaguana Garden Play Area Benches

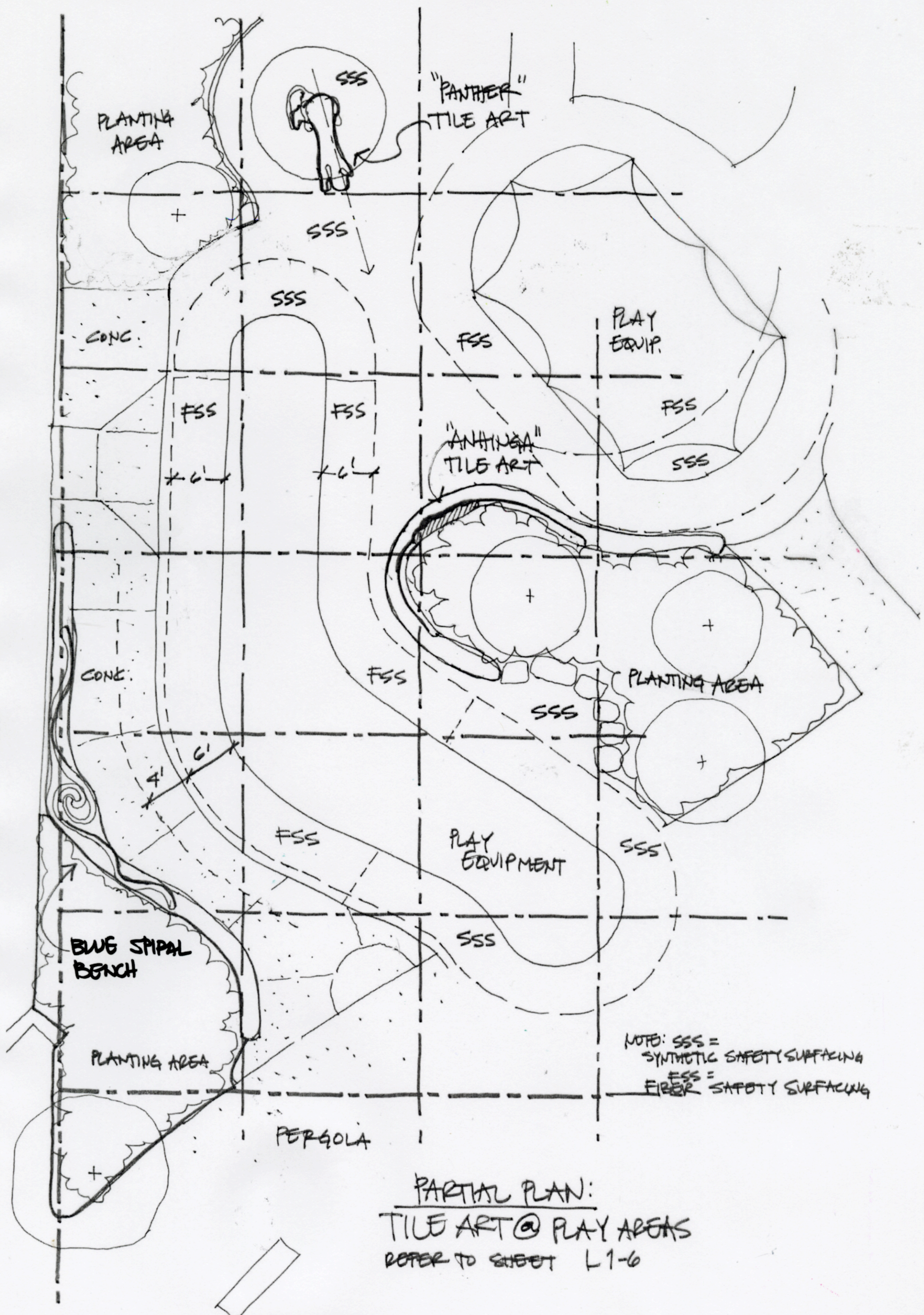
The project will consist of installing multiple sculptures within the grounds for the new Yanaguana Garden Park. There will be two (2) benches ("Anhinga" and "Blue" Spiral benches) surrounding the new play area. In addition, one (1) sculpture will be a "climbable" feature ("Blue Panther") in this new play area. These pieces will be constructed from tile art and will illustrate the story of the origins of the San Antonio River as passed on by the Native American people from the San Antonio area.

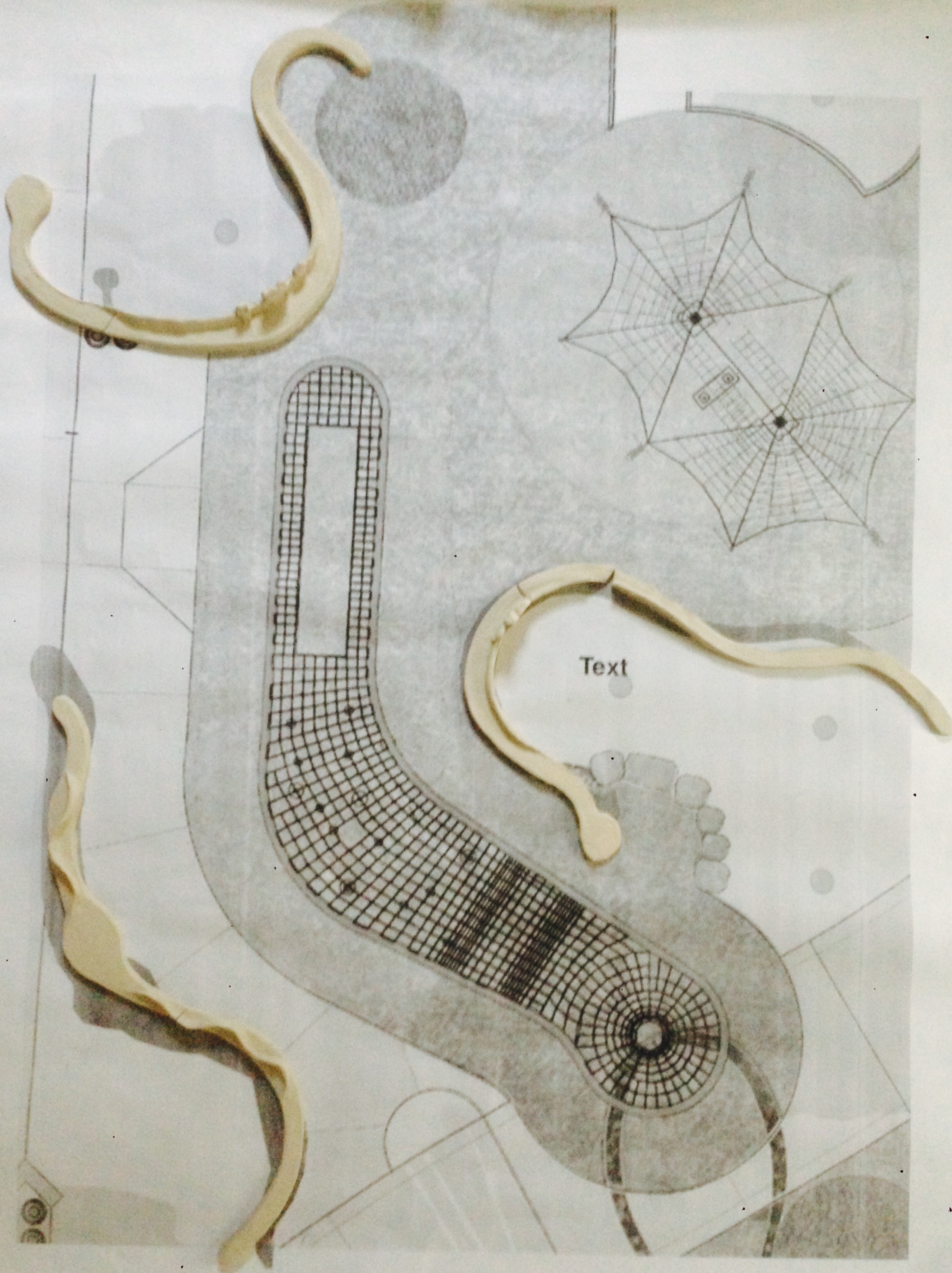
The story tells of an anhinga bird emerging from a hole in the ground being chased by a "Blue" panther that later emerges from the same hole. As the bird flies up, a drop of water falls from its wing onto the ground. This drop of water creates the "Blue" Spiral that is the source of water for the San Antonio River.

The "Blue" Spiral bench will depict a large blue circle in the center of the bench with swirls of blue spiraling from it. These two swirls will flow outward opposite each other toward the two ends of the bench. These swirls will undulate like a sine wave and grow from the bench seat to create a bench back that allows seating from both sides.

The "Anhinga" bench will be adjacent to the "Blue" Spiral bench and will have a bird morphing from the back up into the air. The wings will appear to be wet and the bird will be gazing slightly upward toward the sky.

The "Blue Panther" will be across from the "Anhinga" bench and will be a "climbable" feature situated on a mound within the play area.





Text

Blue Spiral Bench

