

HISTORIC AND DESIGN REVIEW COMMISSION

June 03, 2015

Agenda Item No: 08

HDRC CASE NO: 2015-207
ADDRESS: 630 E GUENTHER ST
LEGAL DESCRIPTION: NCB 939 BLK 2 LOT 13
ZONING: RM4 H
CITY COUNCIL DIST.: 1
DISTRICT: King William Historic District
LANDMARK: Meerscheidt House
APPLICANT: Linda Couch
OWNER: Linda Couch
TYPE OF WORK: Tax Certification
REQUEST:

The applicant is requesting Historic Tax Certification for the property at 630 E Guenther.

APPLICABLE CITATIONS:

UDC Section 35-618. Tax Exemption Qualifications:

(d) Certification.

(1) Historic and Design Review Commission Certification. Upon receipt of the owner's sworn application the historic and design review commission shall make an investigation of the property and shall certify the facts to the city tax assessor-collector within thirty (30) days along with the historic and design review commission's documentation for recommendation of either approval or disapproval of the application for exemption.

FINDINGS:

- a. The scope of work consists of HDRC approved items including the demolition of a non contributing addition, the painting and repair of the existing wood siding, wood windows and standing seam metal roof, the construction of a new, open air screened porch and the reconstruction of the existing front porch.
- b. The applicant has met all of the requirements for Historic Tax Certification outlined in UDC Section 35-618 and has provided evidence to that effect to the Historic Preservation Officer.

RECOMMENDATION:

Staff recommends approval as submitted based on findings a and b.

CASE MANAGER:

Edward Hall





Flex Viewer

Powered by ArcGIS Server

Printed: May 21, 2015

The City of San Antonio does not guarantee the accuracy, adequacy, completeness or usefulness of any information. The City does not warrant the completeness, timeliness, or positional, thematic, and attribute accuracy of the GIS data. The GIS data, cartographic products, and associated applications are not legal representations of the depicted data. Information shown on these maps is derived from public records that are constantly undergoing revision. Under no circumstances should GIS-derived products be used for final design purposes. The City provides this information on an "as is" basis without warranty of any kind, express or implied, including but not limited to warranties of merchantability or fitness for a particular purpose, and assumes no responsibility for anyone's use of the information.

GENERAL NOTES

CONCRETE STEEL REINFORCEMENT

- | | | |
|---|-------|--|
| 1. Design basic structural analysis and development of computer programs for Spectral (Equivalent) Loads of Class 2 and 3 Bridges and AASHTO Minimum Criteria for Class 2 and 3 Bridges | | |
| 2. Design of Bridge Deck Requirements for Reinforced Concrete, Steel, Prestressed Concrete, Composite, and Composite-Aircrete-Tendon Composite Materials | | |
| 3. Foundation Design | | |
| 4. Bridge Deck Details | | |
| 5. Bridge Deck Details | 20 MP | |
| 6. Bridge Deck Details | 40 MP | |
| 7. Bridge Deck Details | 15 MP | |
| 8. Bridge Deck Details | 15 MP | |
| 9. Bridge Deck Details | 15 MP | |
| 10. Bridge Deck Details | 15 MP | |
| 11. Bridge Deck Details | 15 MP | |
| 12. Bridge Deck Details | 15 MP | |
| 13. Bridge Deck Details | 15 MP | |
| 14. Bridge Deck Details | 15 MP | |
| 15. Bridge Deck Details | 15 MP | |
| 16. Bridge Deck Details | 15 MP | |
| 17. Bridge Deck Details | 15 MP | |
| 18. Bridge Deck Details | 15 MP | |
| 19. Bridge Deck Details | 15 MP | |
| 20. Bridge Deck Details | 15 MP | |
| 21. Bridge Deck Details | 15 MP | |
| 22. Bridge Deck Details | 15 MP | |
| 23. Bridge Deck Details | 15 MP | |
| 24. Bridge Deck Details | 15 MP | |
| 25. Bridge Deck Details | 15 MP | |
| 26. Bridge Deck Details | 15 MP | |
| 27. Bridge Deck Details | 15 MP | |
| 28. Bridge Deck Details | 15 MP | |
| 29. Bridge Deck Details | 15 MP | |
| 30. Bridge Deck Details | 15 MP | |
| 31. Bridge Deck Details | 15 MP | |
| 32. Bridge Deck Details | 15 MP | |
| 33. Bridge Deck Details | 15 MP | |
| 34. Bridge Deck Details | 15 MP | |
| 35. Bridge Deck Details | 15 MP | |
| 36. Bridge Deck Details | 15 MP | |
| 37. Bridge Deck Details | 15 MP | |
| 38. Bridge Deck Details | 15 MP | |
| 39. Bridge Deck Details | 15 MP | |
| 40. Bridge Deck Details | 15 MP | |
| 41. Bridge Deck Details | 15 MP | |
| 42. Bridge Deck Details | 15 MP | |
| 43. Bridge Deck Details | 15 MP | |
| 44. Bridge Deck Details | 15 MP | |
| 45. Bridge Deck Details | 15 MP | |
| 46. Bridge Deck Details | 15 MP | |
| 47. Bridge Deck Details | 15 MP | |
| 48. Bridge Deck Details | 15 MP | |
| 49. Bridge Deck Details | 15 MP | |
| 50. Bridge Deck Details | 15 MP | |
| 51. Bridge Deck Details | 15 MP | |
| 52. Bridge Deck Details | 15 MP | |
| 53. Bridge Deck Details | 15 MP | |
| 54. Bridge Deck Details | 15 MP | |
| 55. Bridge Deck Details | 15 MP | |
| 56. Bridge Deck Details | 15 MP | |
| 57. Bridge Deck Details | 15 MP | |
| 58. Bridge Deck Details | 15 MP | |
| 59. Bridge Deck Details | 15 MP | |
| 60. Bridge Deck Details | 15 MP | |
| 61. Bridge Deck Details | 15 MP | |
| 62. Bridge Deck Details | 15 MP | |
| 63. Bridge Deck Details | 15 MP | |
| 64. Bridge Deck Details | 15 MP | |
| 65. Bridge Deck Details | 15 MP | |
| 66. Bridge Deck Details | 15 MP | |
| 67. Bridge Deck Details | 15 MP | |
| 68. Bridge Deck Details | 15 MP | |
| 69. Bridge Deck Details | 15 MP | |
| 70. Bridge Deck Details | 15 MP | |
| 71. Bridge Deck Details | 15 MP | |
| 72. Bridge Deck Details | 15 MP | |
| 73. Bridge Deck Details | 15 MP | |
| 74. Bridge Deck Details | 15 MP | |
| 75. Bridge Deck Details | 15 MP | |
| 76. Bridge Deck Details | 15 MP | |
| 77. Bridge Deck Details | 15 MP | |
| 78. Bridge Deck Details | 15 MP | |
| 79. Bridge Deck Details | 15 MP | |
| 80. Bridge Deck Details | 15 MP | |
| 81. Bridge Deck Details | 15 MP | |
| 82. Bridge Deck Details | 15 MP | |
| 83. Bridge Deck Details | 15 MP | |
| 84. Bridge Deck Details | 15 MP | |
| 85. Bridge Deck Details | 15 MP | |
| 86. Bridge Deck Details | 15 MP | |
| 87. Bridge Deck Details | 15 MP | |
| 88. Bridge Deck Details | 15 MP | |
| 89. Bridge Deck Details | 15 MP | |
| 90. Bridge Deck Details | 15 MP | |
| 91. Bridge Deck Details | 15 MP | |
| 92. Bridge Deck Details | 15 MP | |
| 93. Bridge Deck Details | 15 MP | |
| 94. Bridge Deck Details | 15 MP | |
| 95. Bridge Deck Details | 15 MP | |
| 96. Bridge Deck Details | 15 MP | |
| 97. Bridge Deck Details | 15 MP | |
| 98. Bridge Deck Details | 15 MP | |
| 99. Bridge Deck Details | 15 MP | |
| 100. Bridge Deck Details | 15 MP | |

1. **Formal** or **informal** – depending on confidentiality and the nature of the response. Informal responses are usually the most common.
2. **Anonymous** or **non-anonymous** – depending on the nature of the response. Anonymous responses are usually the most common.
3. **Open-ended** or **closed-ended** – depending on the nature of the response. Open-ended responses are usually the most common.
4. **Quantitative** or **qualitative** – depending on the nature of the response. Quantitative responses are usually the most common.
5. **Self-administered** or **interviewer-administered** – depending on the nature of the response. Self-administered responses are usually the most common.
6. **Online** or **offline** – depending on the nature of the response. Online responses are usually the most common.
7. **Web-based** or **non-web-based** – depending on the nature of the response. Web-based responses are usually the most common.
8. **Real-time** or **non-real-time** – depending on the nature of the response. Real-time responses are usually the most common.
9. **Instantaneous** or **non-instantaneous** – depending on the nature of the response. Instantaneous responses are usually the most common.
10. **Interactive** or **non-interactive** – depending on the nature of the response. Interactive responses are usually the most common.

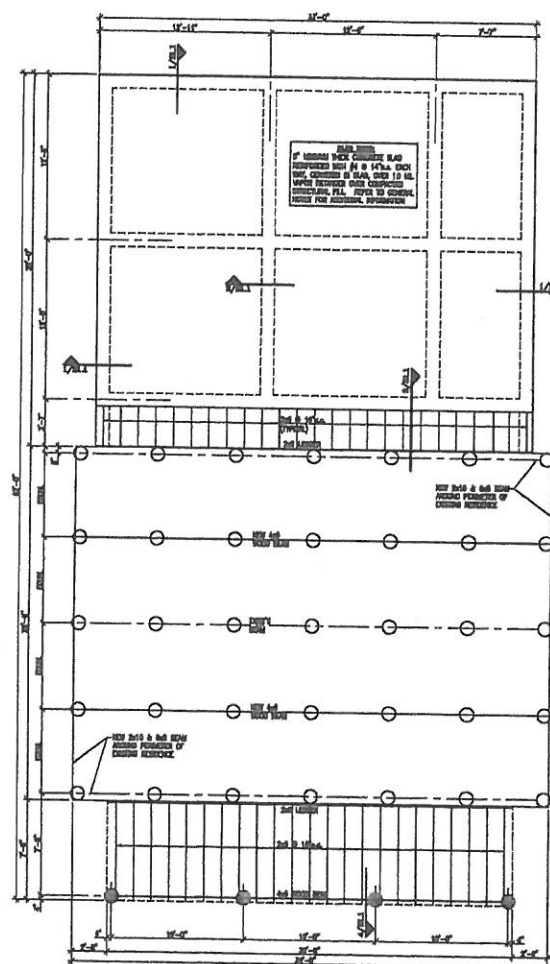
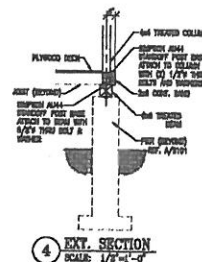
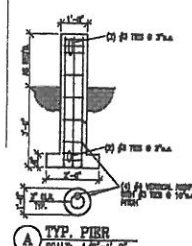
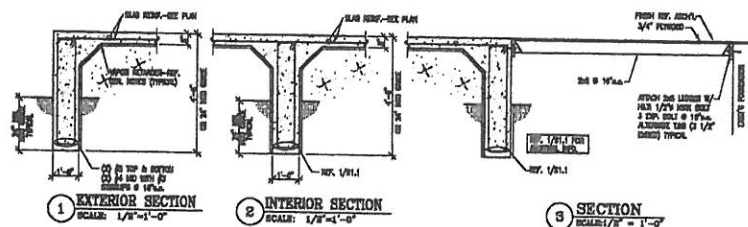
WIGGIE BEAM, CAST-IN-PLACE CONCRETE FUNDATION

1. Very dry (desert). Very hot (desert). Very quiet and
 2. and very peaceful (desert). Very sad (desert). Many other
 3. but I don't like it.
 4. I don't like it. I don't like it. I don't like it. I don't like it.
 5. I don't like it. I don't like it. I don't like it. I don't like it.
 6. I don't like it. I don't like it. I don't like it. I don't like it.
 7. I don't like it. I don't like it. I don't like it. I don't like it.
 8. I don't like it. I don't like it. I don't like it. I don't like it.
 9. I don't like it. I don't like it. I don't like it. I don't like it.
 10. I don't like it. I don't like it. I don't like it. I don't like it.
 11. I don't like it. I don't like it. I don't like it. I don't like it.
 12. I don't like it. I don't like it. I don't like it. I don't like it.
 13. I don't like it. I don't like it. I don't like it. I don't like it.
 14. I don't like it. I don't like it. I don't like it. I don't like it.
 15. I don't like it. I don't like it. I don't like it. I don't like it.
 16. I don't like it. I don't like it. I don't like it. I don't like it.
 17. I don't like it. I don't like it. I don't like it. I don't like it.

WOOD-BURNING SITES - INDICATE

- [illegible]

LAMINATED VENTER LINDER BEANS

[illegible]

**ADDITION
FOUNDATION PLAN**

LAWRENCE CALVETTI, P.E.
TEXAS NO. 30028

REVIEW ONLY
NOT FOR PRICING, PERMIT
OR CONSTRUCTION

PROJECTED 1988
© CALVETTI
P.O. BOX 107074

COUCH STUDIO
330 E. GUENTHER ST.
SAN ANTONIO, TEXAS 78245

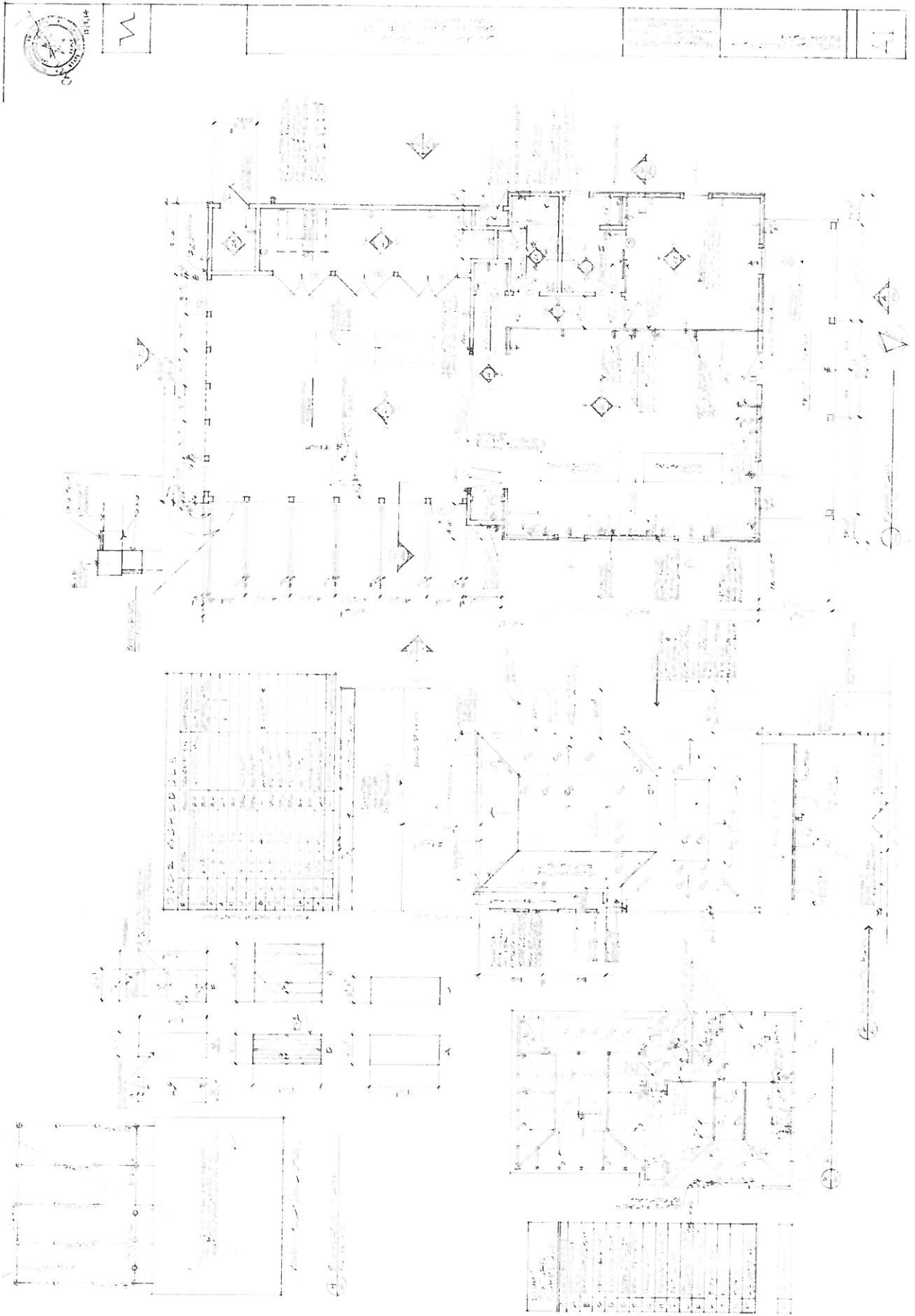
DRAWN BY: BOYELL
CHECKED BY: LO
DATE: JAN. 21, 2018
REVISIONS:

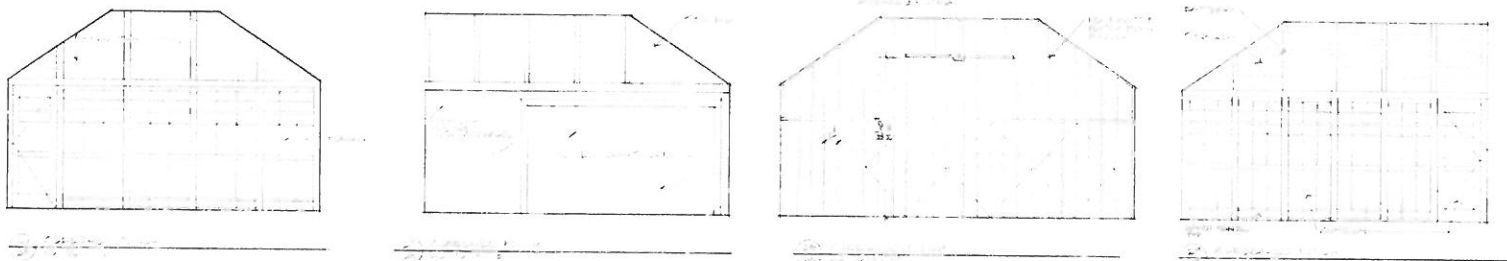
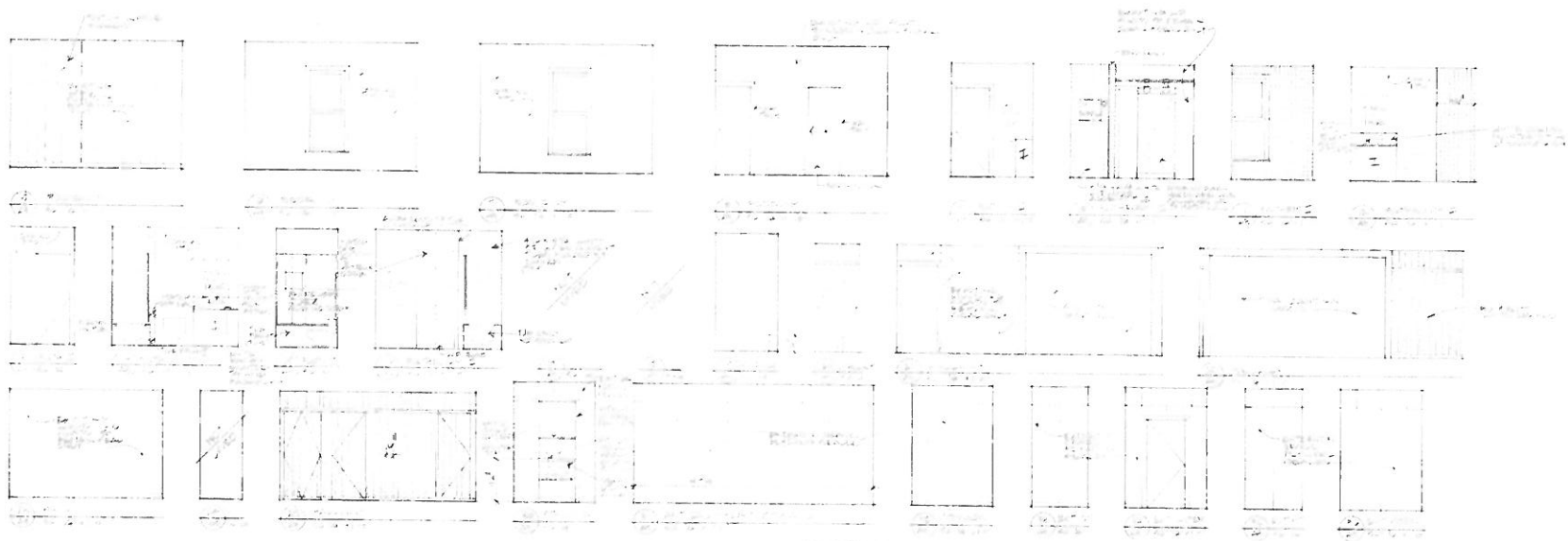
HONORED ARCHITECTURE
 915 S. ALAMO
 SAN ANTONIO, TX 78205
 210.410.2438
 ORDERED@HONOREDARCHITECTURE.COM

SHEET
S1.1
OF ONE

OF ONE

OF ONE





W

U.S. DEPARTMENT OF AGRICULTURE
BUREAU OF PLANT INDUSTRY
OFFICE OF THE CHIEF OF BUREAU
WASHINGTON, D.C.

U.S. DEPARTMENT OF AGRICULTURE
BUREAU OF PLANT INDUSTRY
OFFICE OF THE CHIEF OF BUREAU
WASHINGTON, D.C.

13

LINDA COUCH
630 E.GUENTHER
SAN ANTONIO,TEXAS

APRIL 27,2015

BY OWNER	APPLIANCES
\$500	APPLIANCE INSTALL-ALLOWANCE
\$750	BARN DOOR HARDWARE-ALLOWANCE
\$17747	BRICK WORK
\$55792	CARPENTER :TRIM \$9814 FRAME: \$45978
\$13459	CERAMIC TILE
\$5125	BIG ASS FAN
\$500	CLEAN UP
\$3902	CONCRETE HONING AND SEALING BALANCE DUE (HALF PAID ALREADY)
\$4800	DEMOLITION
\$21005	DOORS
\$1500	DUMPSTER-ALLOWANCE
\$15875	ELECTRICAL
\$750	GRADING-ALLOWANCE
\$1200	FRONT PORCH RAIL
\$2900	FRONT FENCE
\$10465	QUARTZ/CORIAN
\$1711	GUTTERS-ALLOWANCE
\$3600	HARDWARE-MATERIAL & LABOR
\$9560	HVAC
\$2000	INSULATION-ALLOWANCE
\$300	HALL LIGHT TRIM-ALLOWANCE
\$6956	ISLAND CABINETS
\$11085	LIGHT FIXTURES
\$37893	LUMBER
BY OWNER	MIRROR
\$37917	PAINTING
\$6000	PLANTER AT REAR FENCE
\$16634	PLUMBING FIXTURES
\$15750	PLUMBING
\$800	PORTABLE TOILET-ALLOWANCE
\$2350	ROOF BEAMS-ALLOWANCE-FINAL DESIGN BY CALVETTI
\$13478	ROOF -RED STANDING SEAM AT NEW SECTION
\$500	RAIN CHAINS-ALLOWANCE
\$1760	SHEETROCK
\$2000	SHOWER DOOR
\$1572	SCREEN MATERIAL & ISTALLATION
\$12088	SOLOLITES—10 "
\$7036	WOOD FLOOR
\$347230	SUB TOTAL
\$52084	SUPERVISION/PROFIT/OVERHEAD
\$399314	TOTAL

EXCLUDE: 1. ANY SPECIAL SOLO LITE FRAMING

2. APPLIANCE

3. TILE MATERIAL

ADD ALTERNATES: 1. \$9624-CERAMIC TILE ALL WALLS IN BATHROOMS

2. \$127 EACH FOR 14" VERSUS 10" SOLOLITES

3. \$247 TRANE HVAC EQUIPMENT VERSUS AMERISTAR

4. \$1948 TRANE 15 SEER VERSUS 14 SEER

5. \$5076 PAINT EXISTING ROOF

6. \$1228 LONG LEAF PINE VERSUS EURO BIRCH-KITCHEN ISLANDS

DEDUCT ALTERNATE 1: \$1800 SAME PAVERS AS YOUR HOUSE VERSUS D'HANIS BRICK