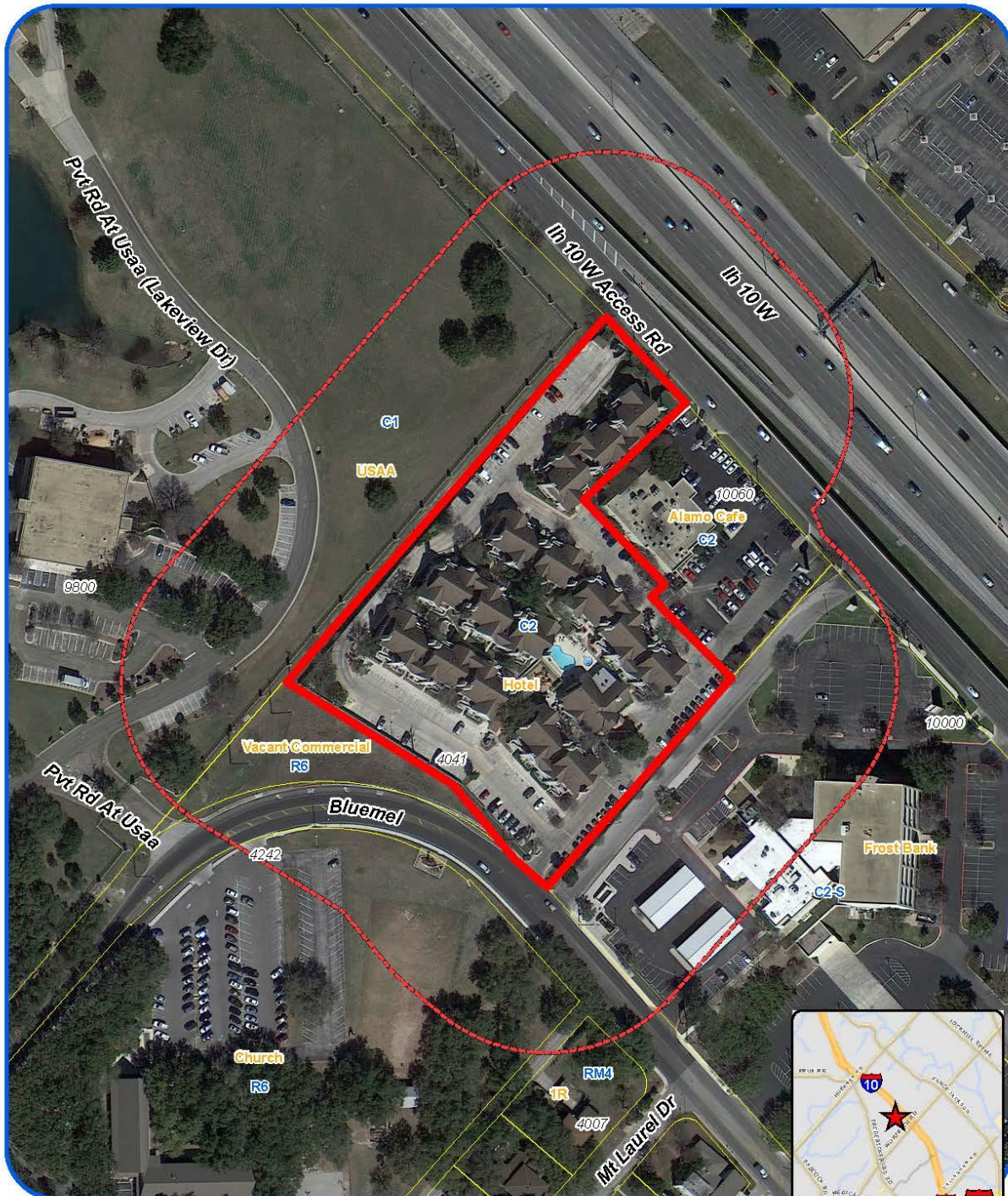


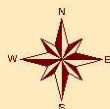
Attachment 1 Notification Plan



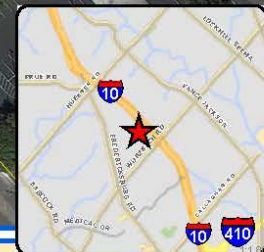
Attachment 1 Notification Plan (continued)



Board of Adjustment Notification Plan for Case No A-15-106



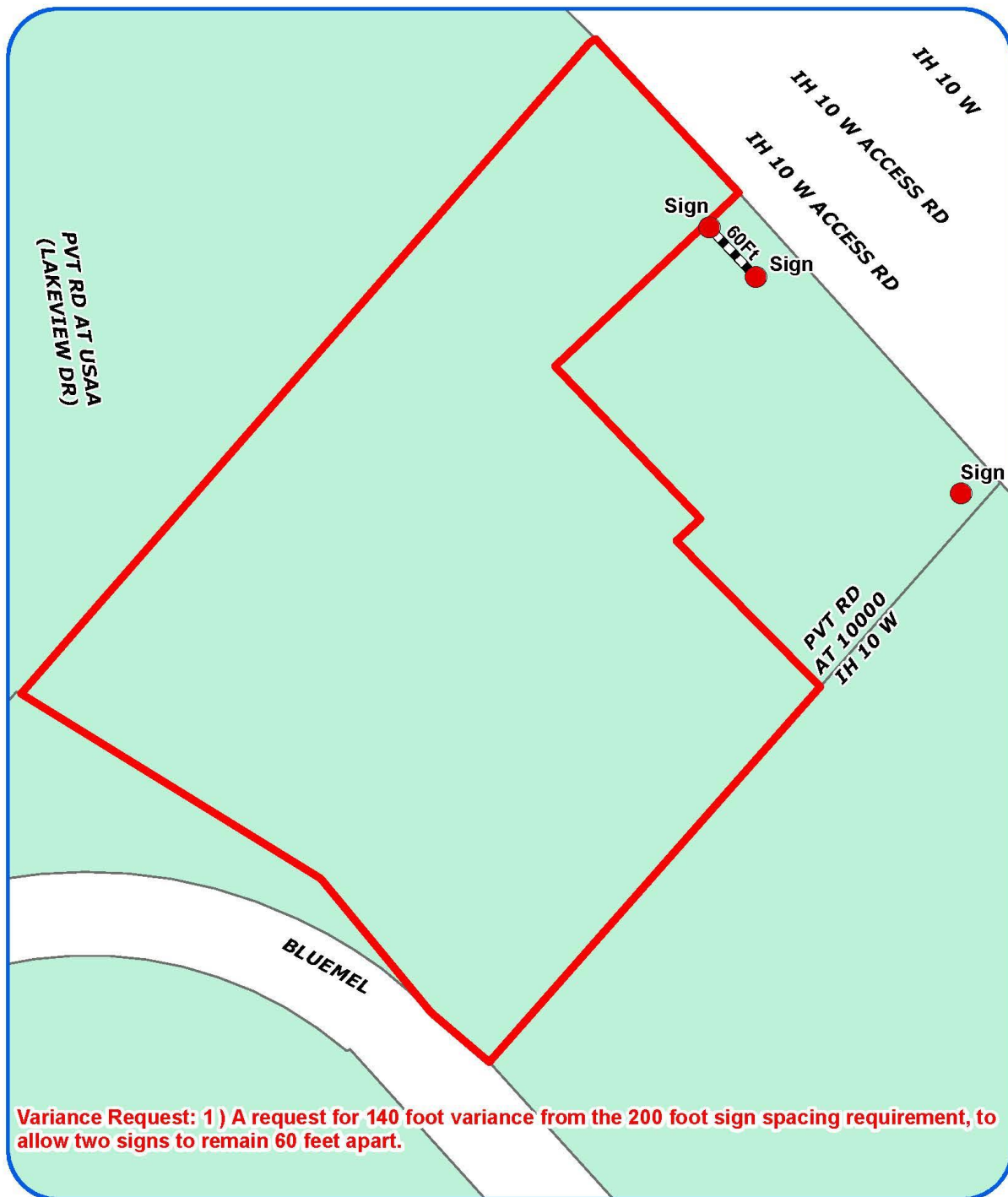
San Antonio City Limits
Subject Property
200' Notification Boundary
Council District: 8



"NOT TO SCALE,
FOR ILLUSTRATIVE PURPOSES ONLY"

Development Services Department
City of San Antonio

Attachment 2
Plot Plan



Board of Adjustment
Plot Plan for
Case No A-15-106



"NOT TO SCALE,
FOR ILLUSTRATIVE PURPOSES ONLY"
Council District: 8

4041 Bluemel Rd

Development Services Department
City of San Antonio

PVT RD AT USAA
(LAKEVIEW DR)

TH 10 W ACCESS RD

TH 10 W

Sign

Sign

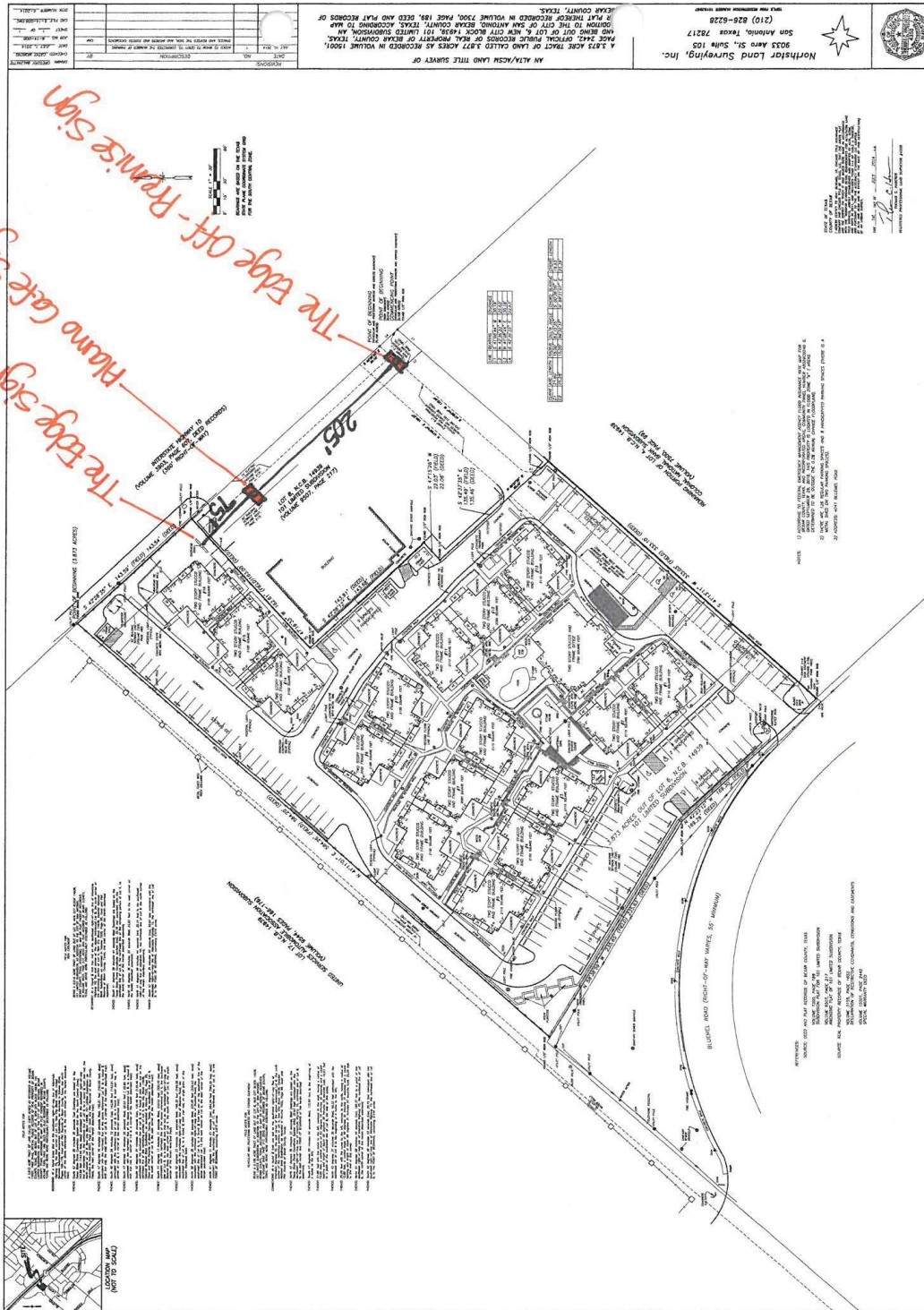
PVT RD
AT 10000
TH 10 W

BLUEMEL

Variance Request: 1) A request for 140 foot variance from the 200 foot sign spacing requirement, to allow two signs to remain 60 feet apart.

Development Services Department
City of San Antonio

Attachment 3 Applicant's Site Plan



Attachment 4 – Photos



Signage on Bluemel



Leasing Office

