

Attachment 1 Notification Plan



Board of Adjustment Notification Plan for Case No A-15-100



San Antonio City Limits

Subject Property

200' Notification Boundary

Council District: 6

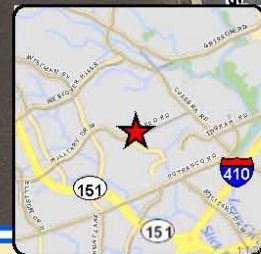
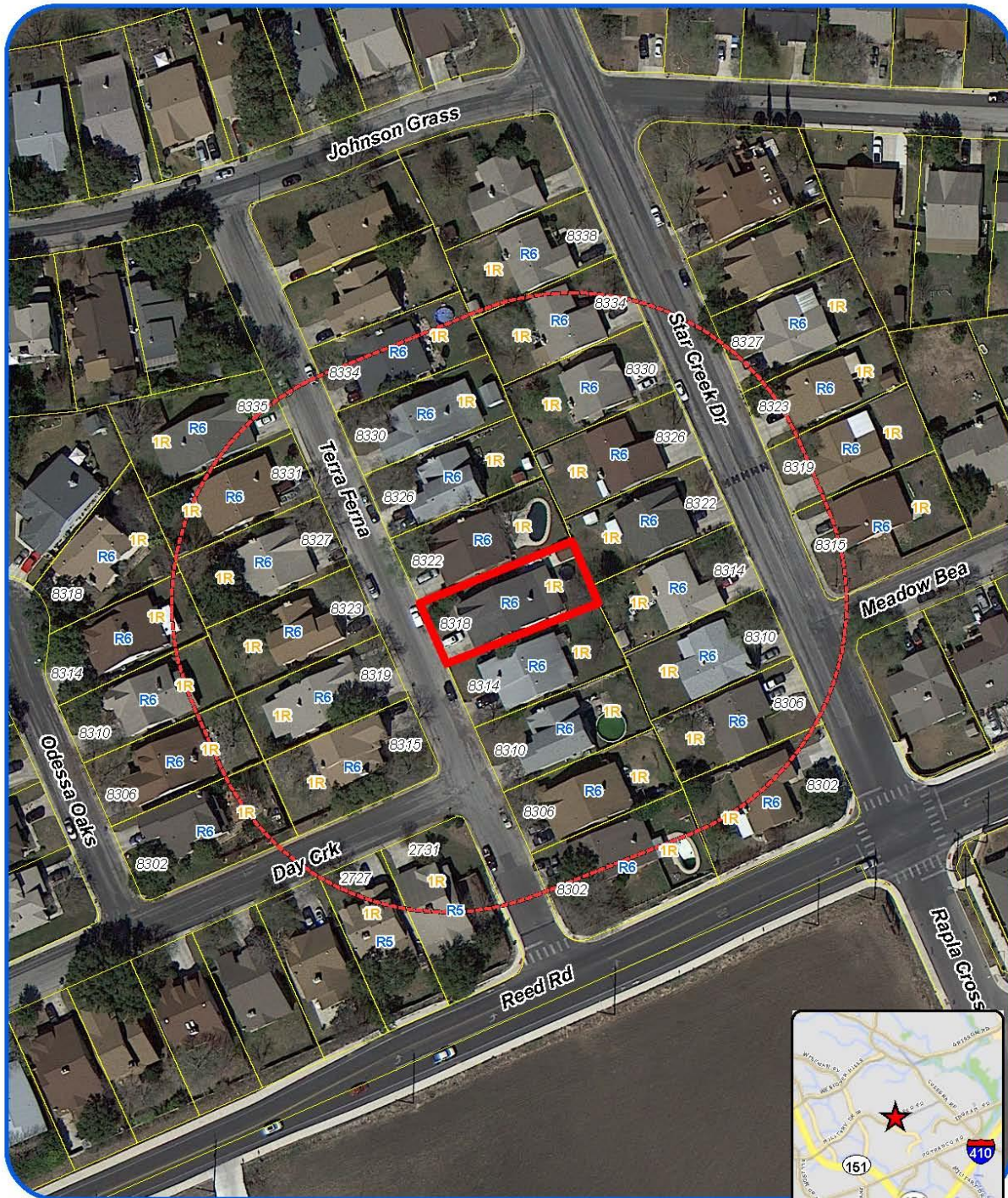


"NOT TO SCALE,
FOR ILLUSTRATIVE PURPOSES ONLY"

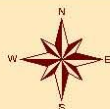
Development Services Department
City of San Antonio



Attachment 1 Notification Plan (continued)



Board of Adjustment Notification Plan for Case No A-15-100



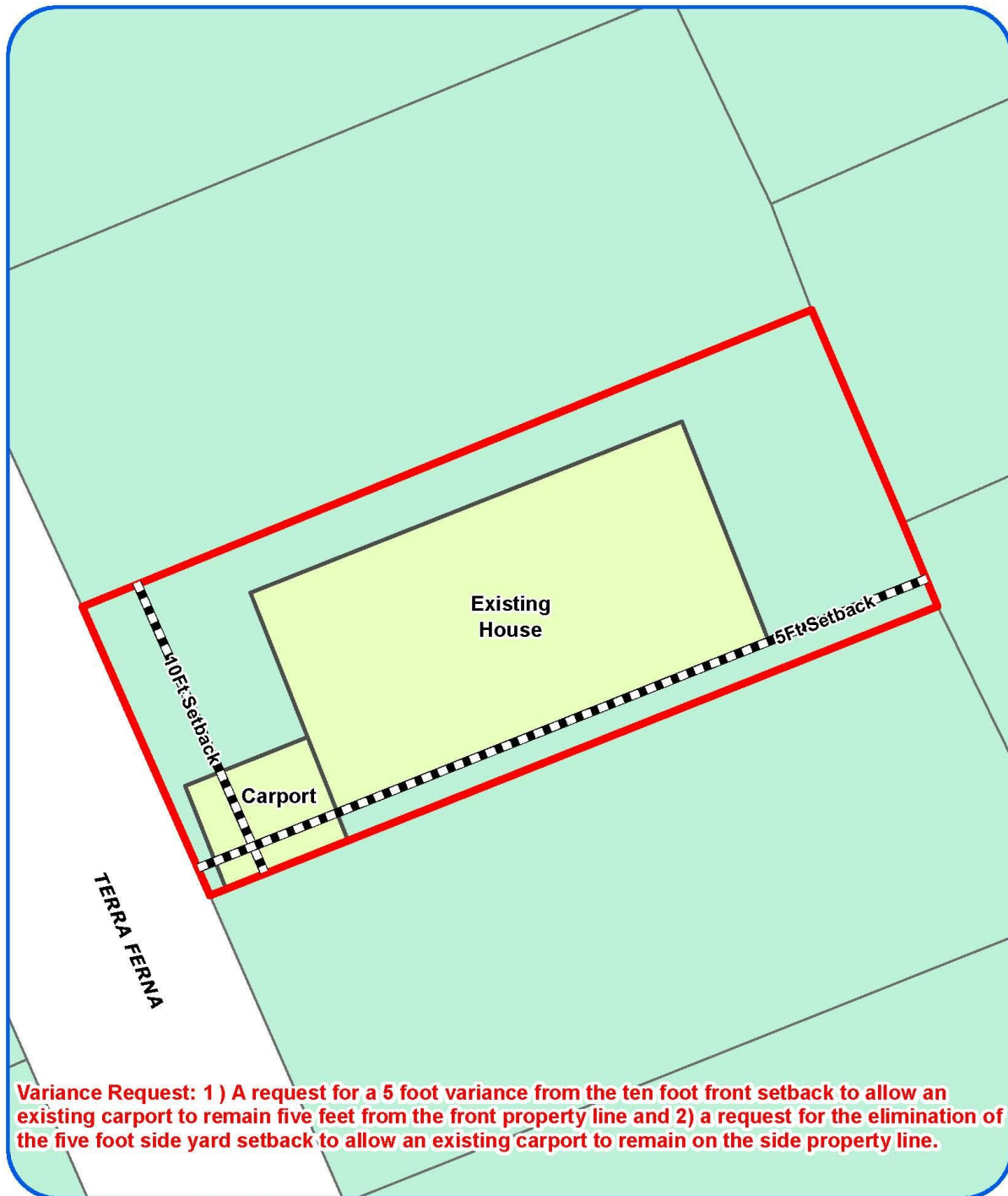
San Antonio City Limits
Subject Property
200' Notification Boundary
Council District: 6



"NOT TO SCALE,
FOR ILLUSTRATIVE PURPOSES ONLY"

Development Services Department
City of San Antonio

Attachment 2
Plot Plan



Board of Adjustment
Plot Plan for
Case No A-15-100



"NOT TO SCALE,
FOR ILLUSTRATIVE PURPOSES ONLY"
Council District: 6

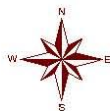
8318 Terra Ferna ^{1/250}

Development Services Department
City of San Antonio

Attachment 2
Plot Plan (continued)



Board of Adjustment
Plot Plan for
Case No A-15-100

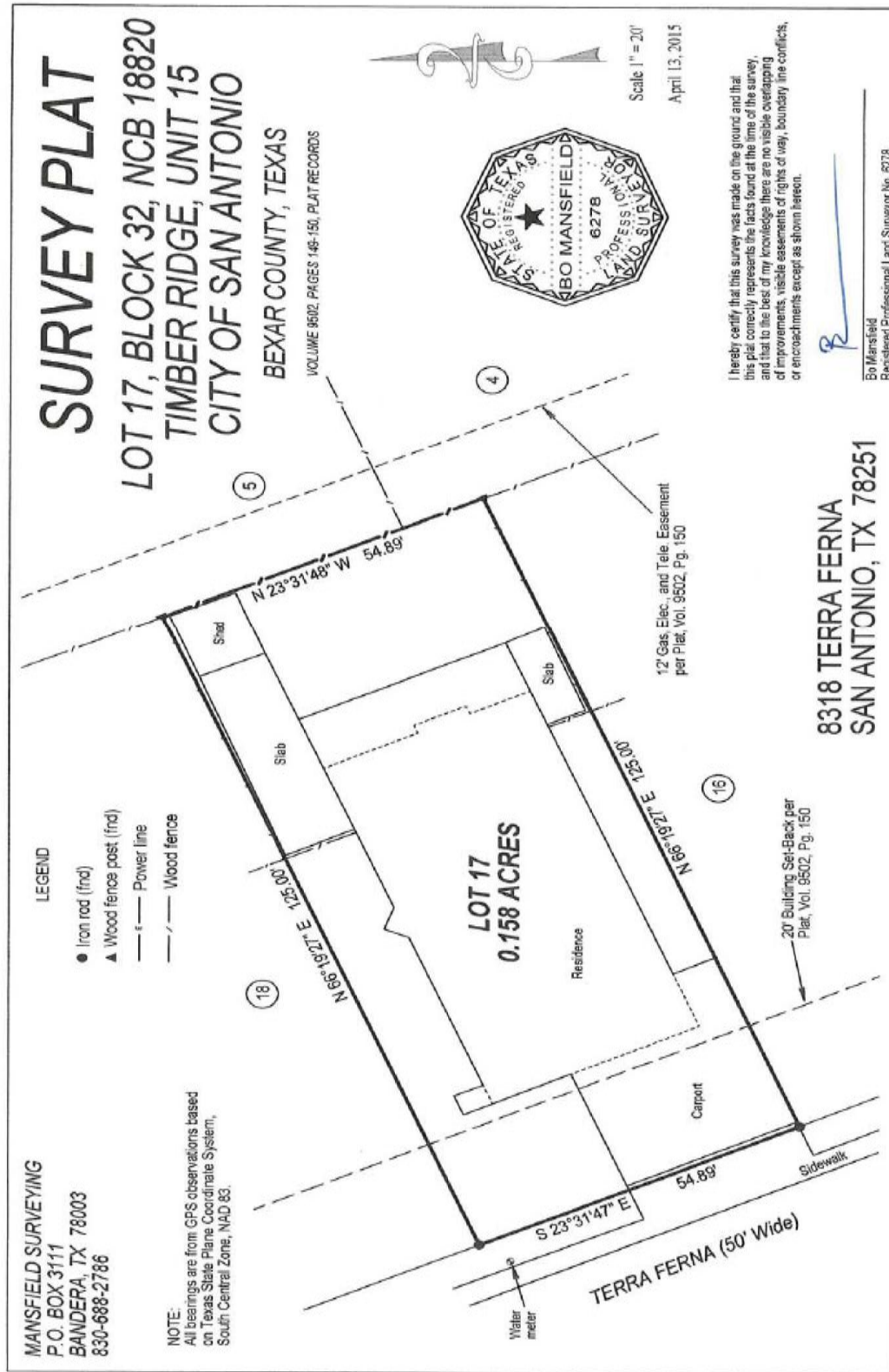


"NOT TO SCALE,
FOR ILLUSTRATIVE PURPOSES ONLY"
Council District: 6

8318 Terra Ferna

Development Services Department
City of San Antonio

Attachment 3
Applicant's Site Plan



Attachment 4 – Photos

8318 Terra Ferna – Subject Property



Large carport covers three cars



Carport built on the side property line



Eave overhand and gutter

