

Attachment 1 Notification Plan



Board of Adjustment Notification Plan for Case No A-15-125



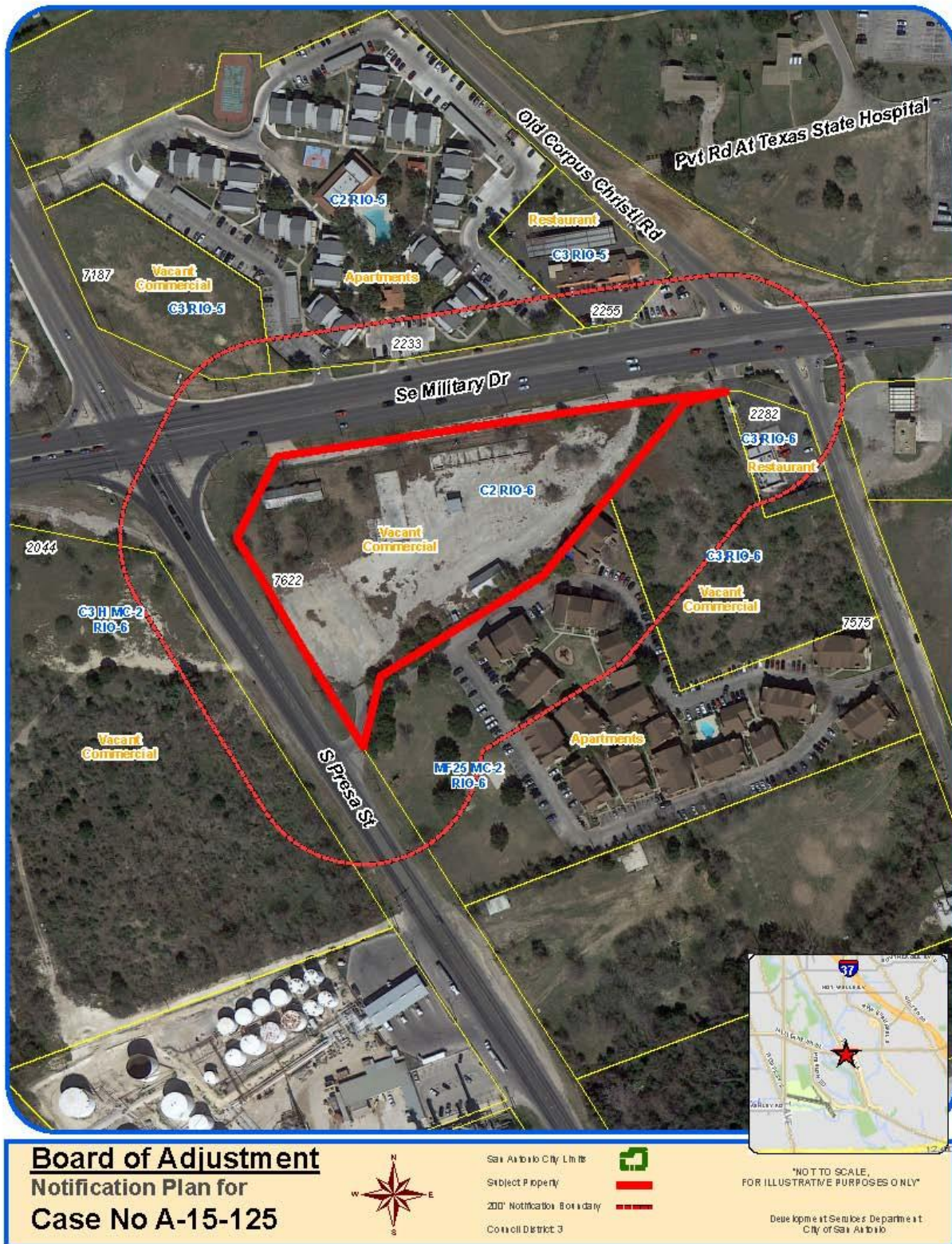
San Antonio City Limits
Subject Property
200' Notification Boundary
Council District: 3



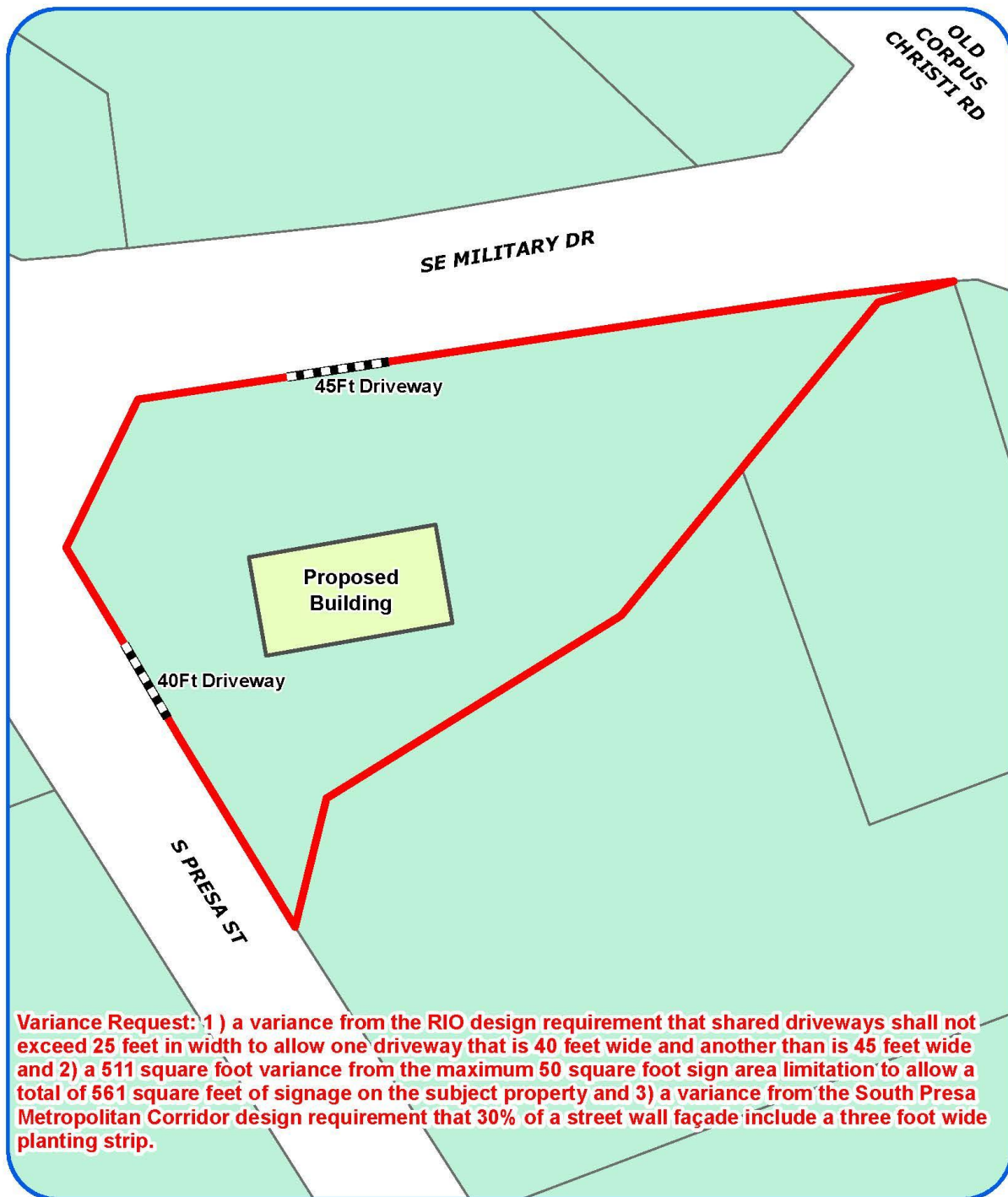
"NOT TO SCALE,
FOR ILLUSTRATIVE PURPOSES ONLY"

Development Services Department
City of San Antonio

Attachment 1 Notification Plan (continued)



Attachment 2
Plot Plan



Board of Adjustment
Plot Plan for
Case No A-15-125



"NOT TO SCALE,
FOR ILLUSTRATIVE PURPOSES ONLY"
Council District: 3

7622 S Presa 1:1,400

Development Services Department
City of San Antonio

Attachment 2
Plot Plan (continued)



Board of Adjustment
Plot Plan for
Case No A-15-125

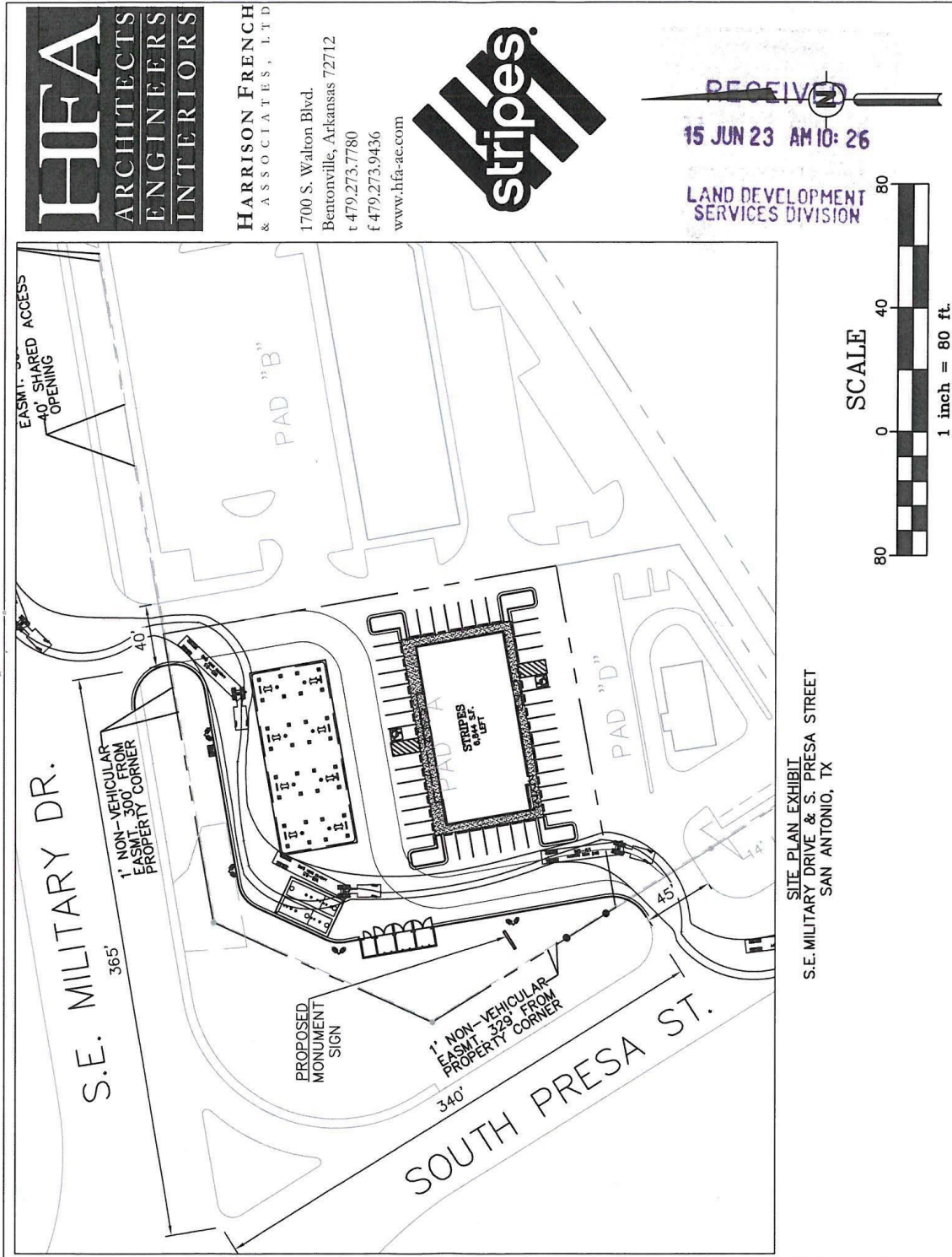


"NOT TO SCALE,
FOR ILLUSTRATIVE PURPOSES ONLY"
Council District: 3

7622 S Presa 1/1,400

Development Services Department
City of San Antonio

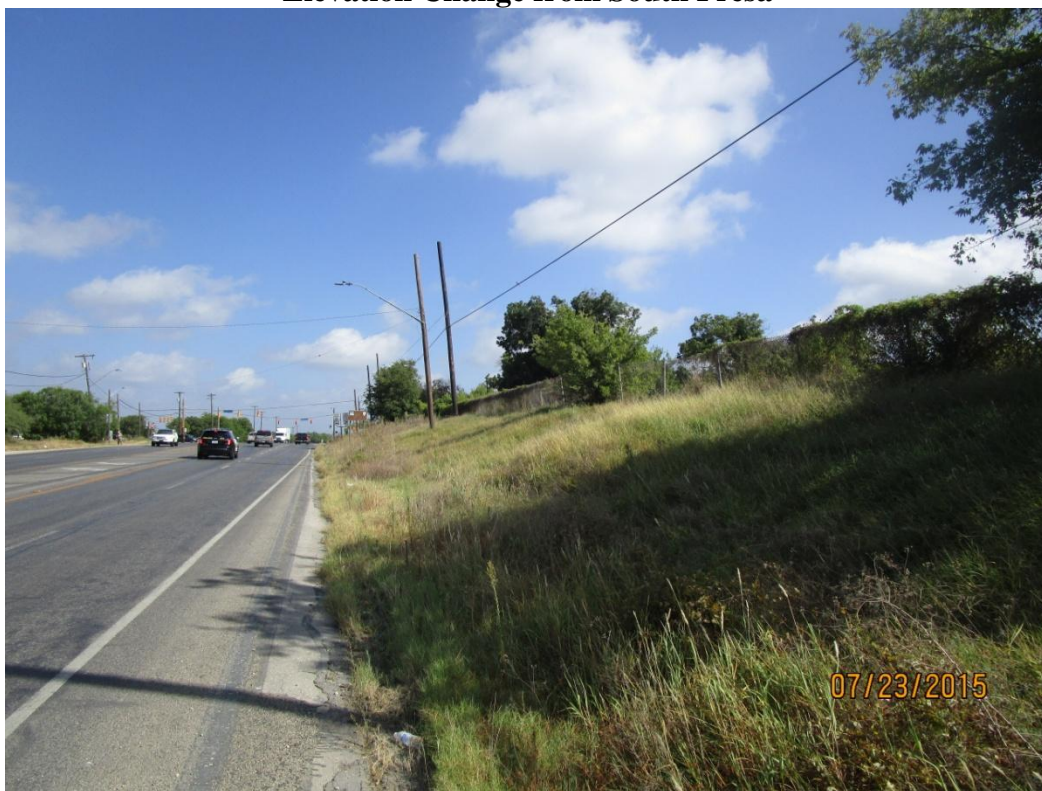
Attachment 3
Applicant's Site Plan



Attachment 4 – Photos
Subject Property – 7622 South Presa Street



Elevation Change from South Presa



VIA Bus Stop in front of subject property



South Presa and SE Military Intersection, as seen from subject property

