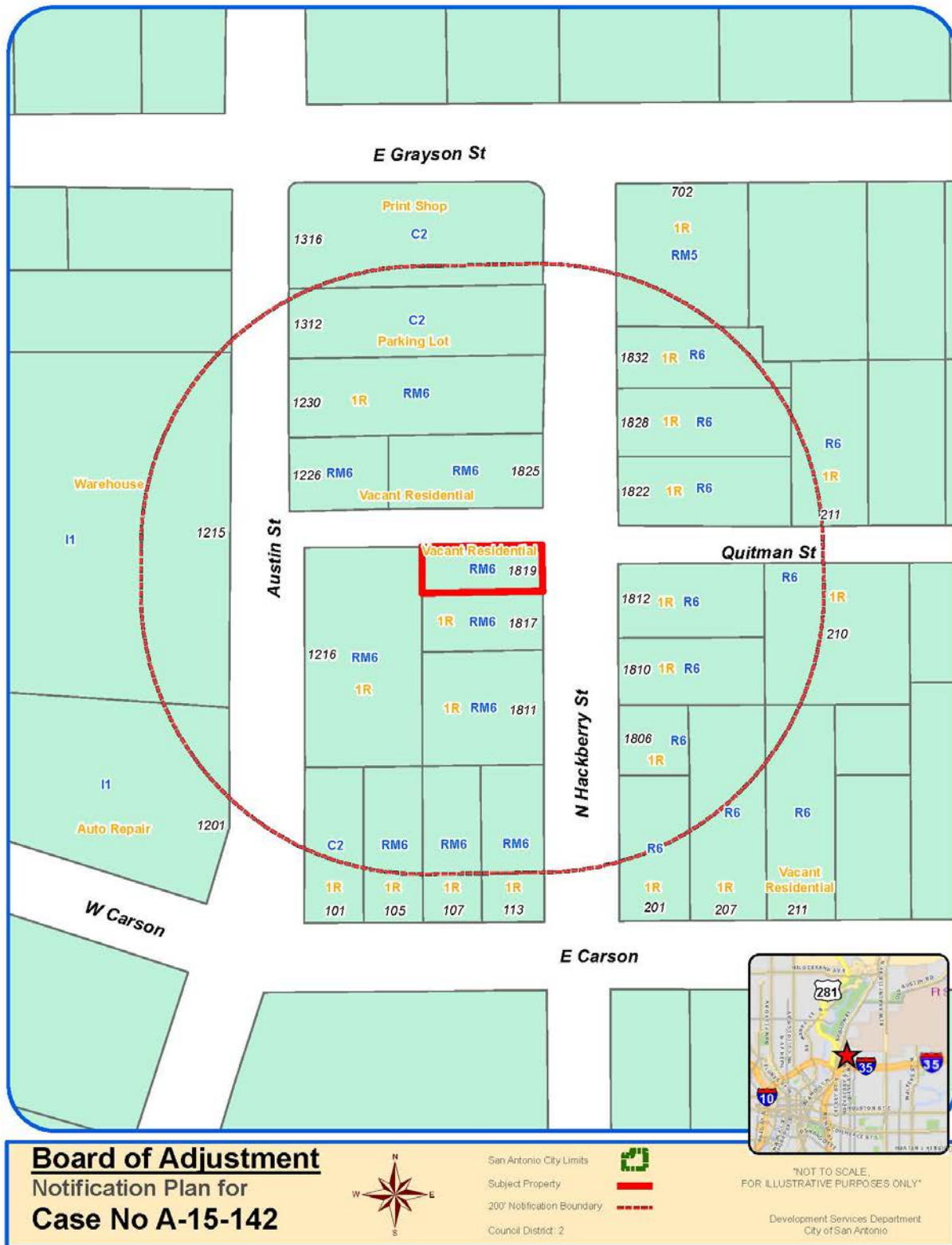


Attachment 1 Notification Plan



**Board of Adjustment
Notification Plan for
Case No A-15-142**

San Antonio City Limits
Subject Property
200' Notification Boundary
Council District 2

NOT TO SCALE,
FOR ILLUSTRATIVE PURPOSES ONLY

Development Services Department
City of San Antonio

Attachment 2
Plot Plan



Board of Adjustment
Plot Plan for
Case No A-15-142



"NOT TO SCALE.
FOR ILLUSTRATIVE PURPOSES ONLY"
Council District: 2

1819 N Hackberry

Development Services Department
City of San Antonio

Attachment 2
Plot Plan (continued)



Board of Adjustment
Plot Plan for
Case No A-15-142

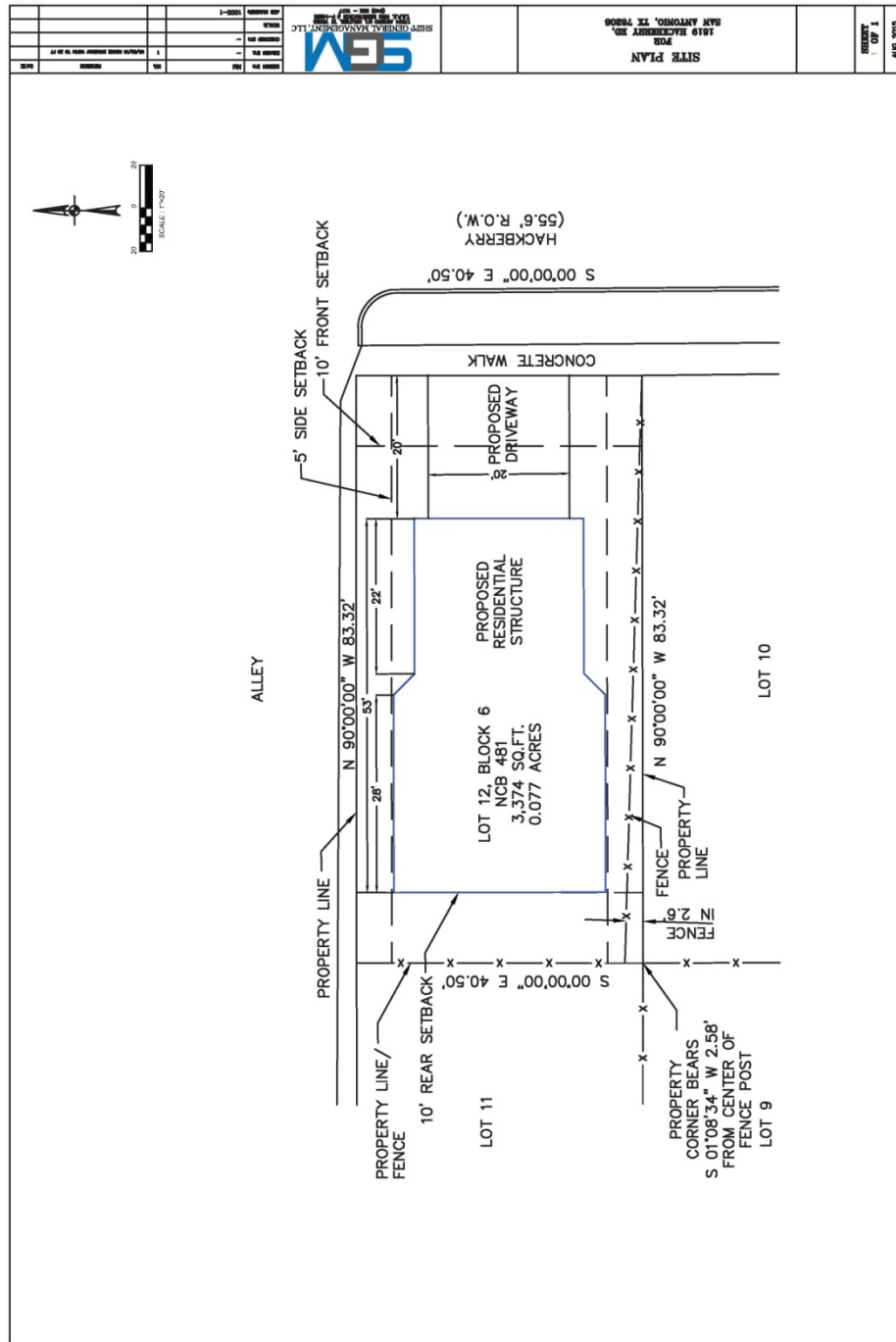


"NOT TO SCALE,
FOR ILLUSTRATIVE PURPOSES ONLY"
Council District: 2

1819 N Hackberry

Development Services Department
City of San Antonio

Attachment 3 Applicant's Site Plan



Attachment 4 – Photos

1819 Hackberry – Subject Property



Road connecting Hackberry Street and Austin Street



Neighboring Properties with front porches and parking on side/rear

