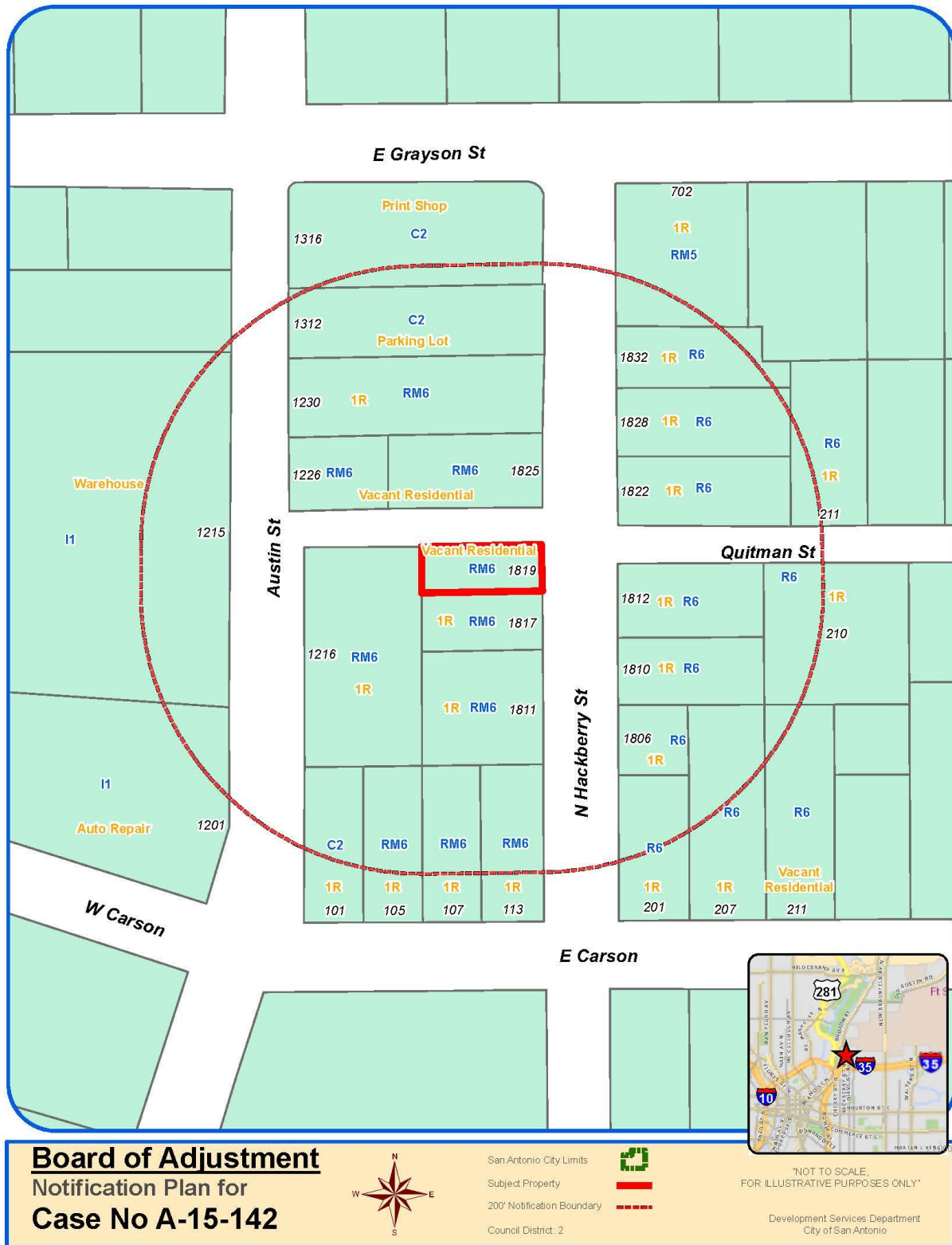
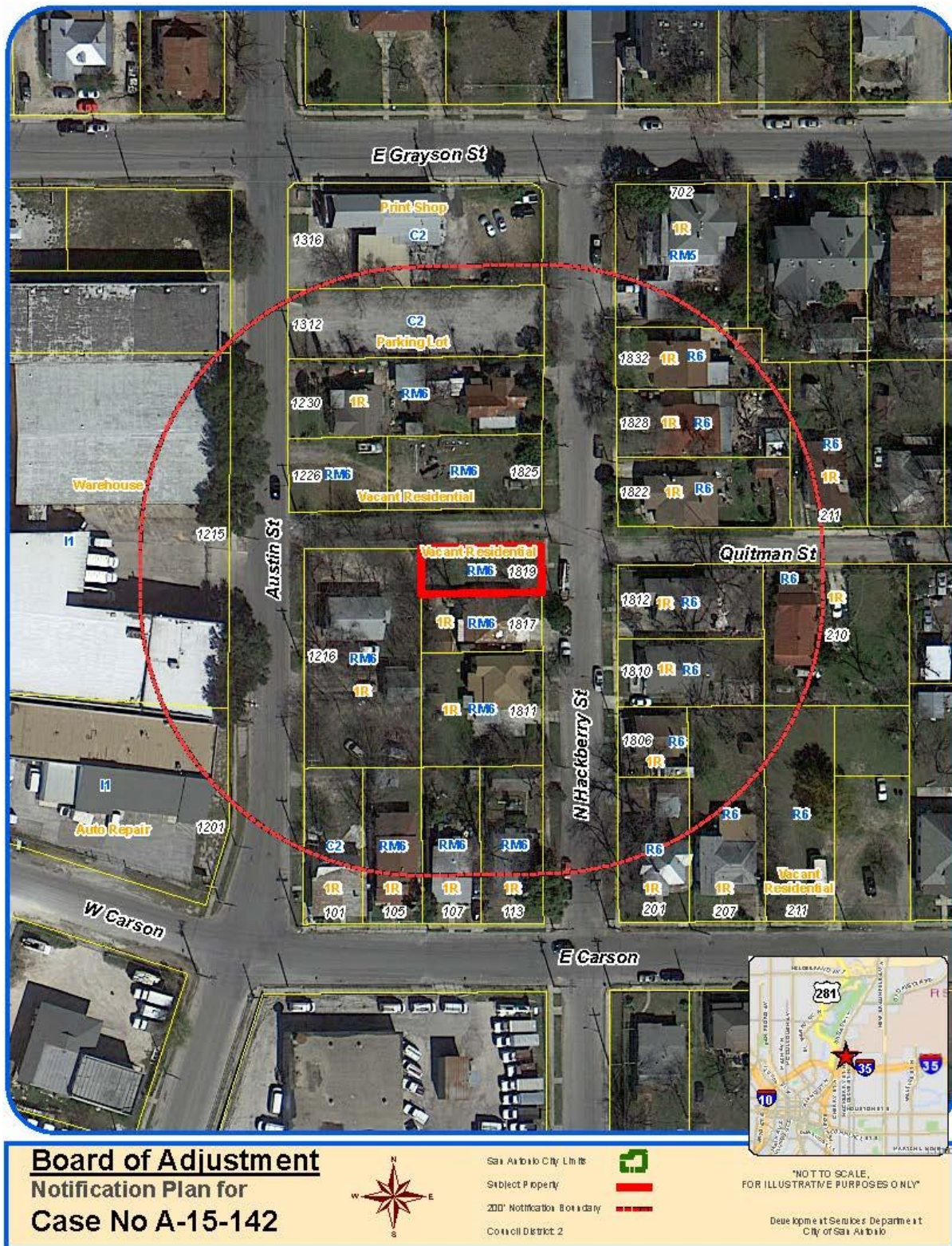


Attachment 1 Notification Plan



Attachment 1 Notification Plan (continued)



**Attachment 2
Plot Plan**



Board of Adjustment
Plot Plan for
Case No A-15-142

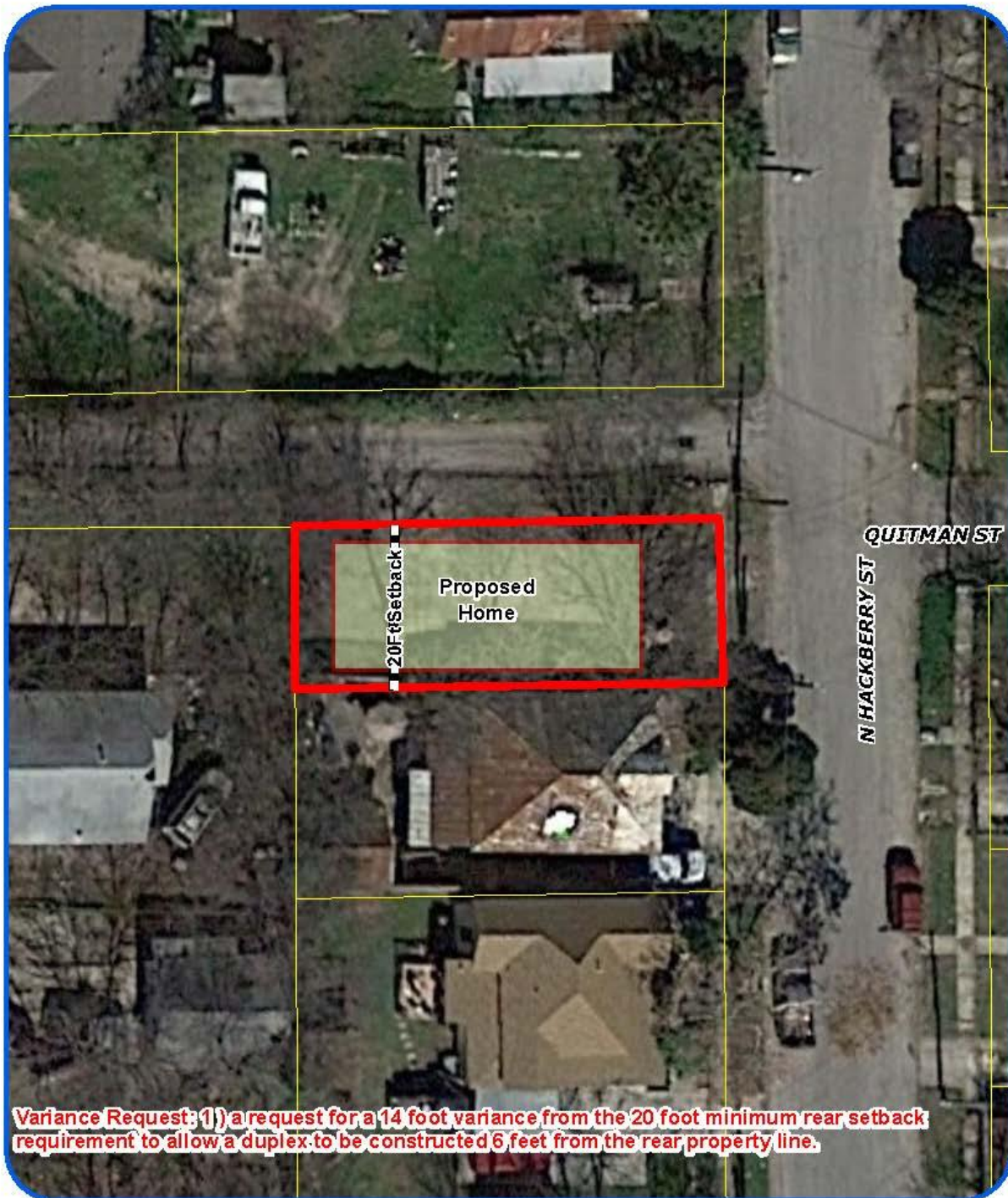


"NOT TO SCALE,
FOR ILLUSTRATIVE PURPOSES ONLY"
Council District: 2

1819 N Hackberry

Development Services Department
City of San Antonio

Attachment 2
Plot Plan (continued)



Variance Request: 1) a request for a 14 foot variance from the 20 foot minimum rear setback requirement to allow a duplex to be constructed 6 feet from the rear property line.

Board of Adjustment
Plot Plan for
Case No A-15-142

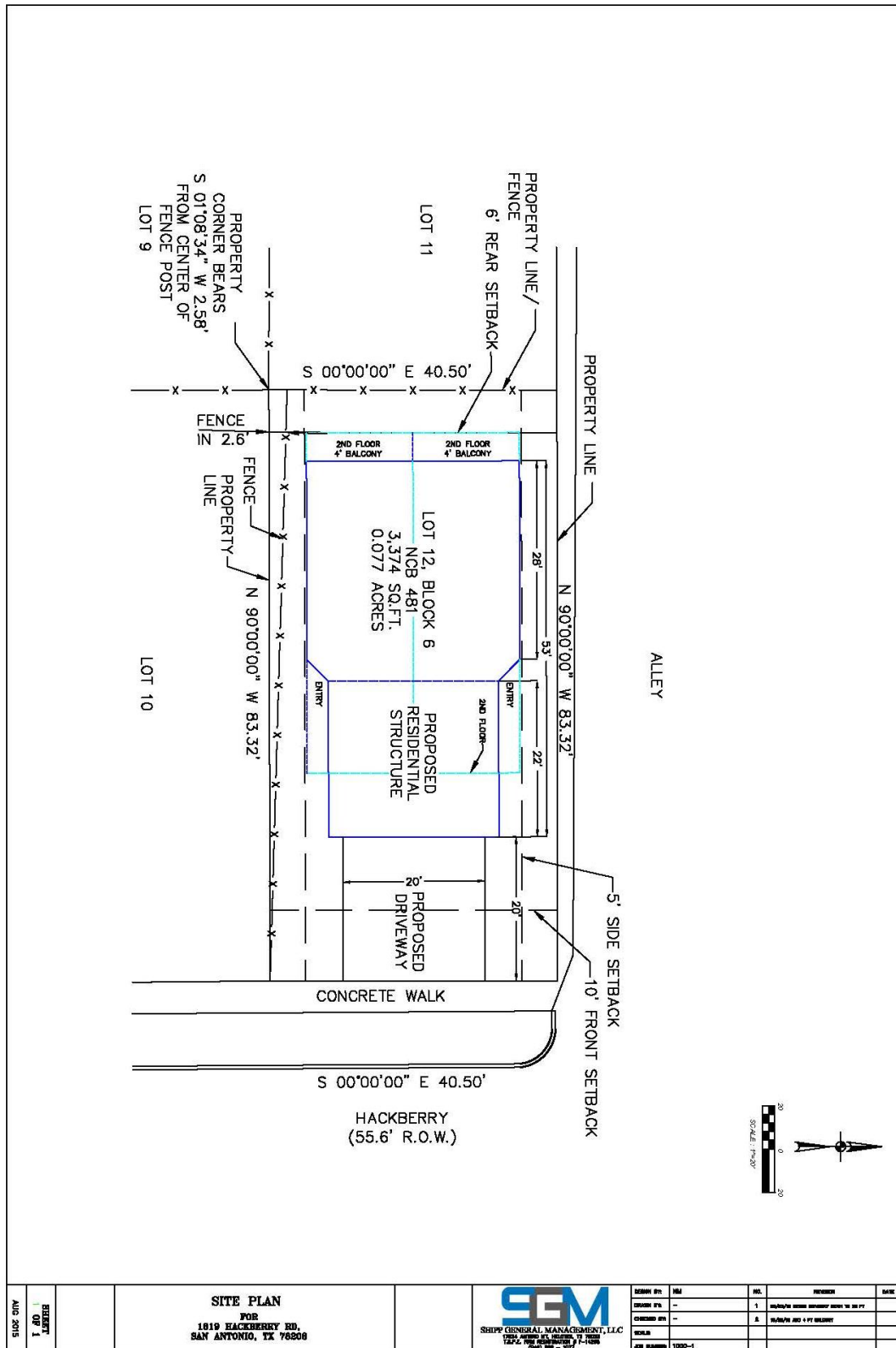


"NOT TO SCALE,
FOR ILLUSTRATIVE PURPOSES ONLY"
Council District: 2

1819 N Hackberry

Deputy Planning Services Department
City of San Antonio

Attachment 3 Applicant's Site Plan



Attachment 4 – Photos

1819 Hackberry – Subject Property



Road connecting Hackberry Street and Austin Street



Neighboring Properties with front porches and parking on side/rear

