

Board of Adjustment
Notification Plan for
Case No A-16-009

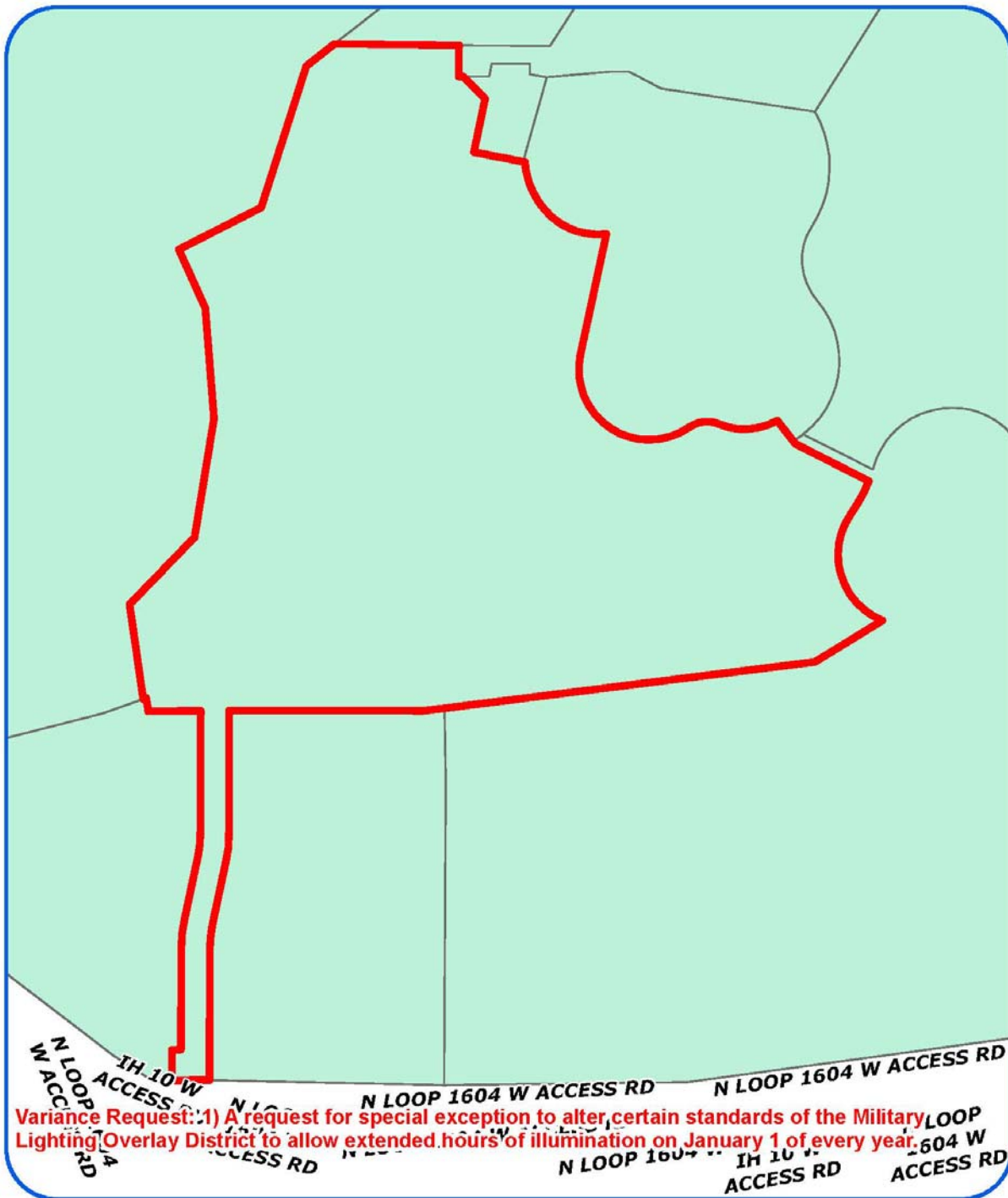
San Antonio City Limits
 Subject Property
 200' Notification Boundary
 Council District: 8

Legend:
 San Antonio City Limits (Green outline)
 Subject Property (Red outline)
 200' Notification Boundary (Red dashed line)
 Council District: 8 (Red outline)

Map Labels:
 Apartments
 Vacant Commercial
 Driving Range
 MPCD ERZD GC-1
 MPCD ERZD
 VANCE JACKSON
 IH 10 W ACCESS
 LOOP 1604 W ACCESS
 1604
 16539
 16631
 16515
 16333
 5539

Inset Map:
 "NOT TO SCALE,
 FOR ILLUSTRATIVE PURPOSES ONLY"
 Development Services Department
 City of San Antonio

Attachment 2 Plot Plan



Board of Adjustment
Plot Plan for
Case No A-16-009

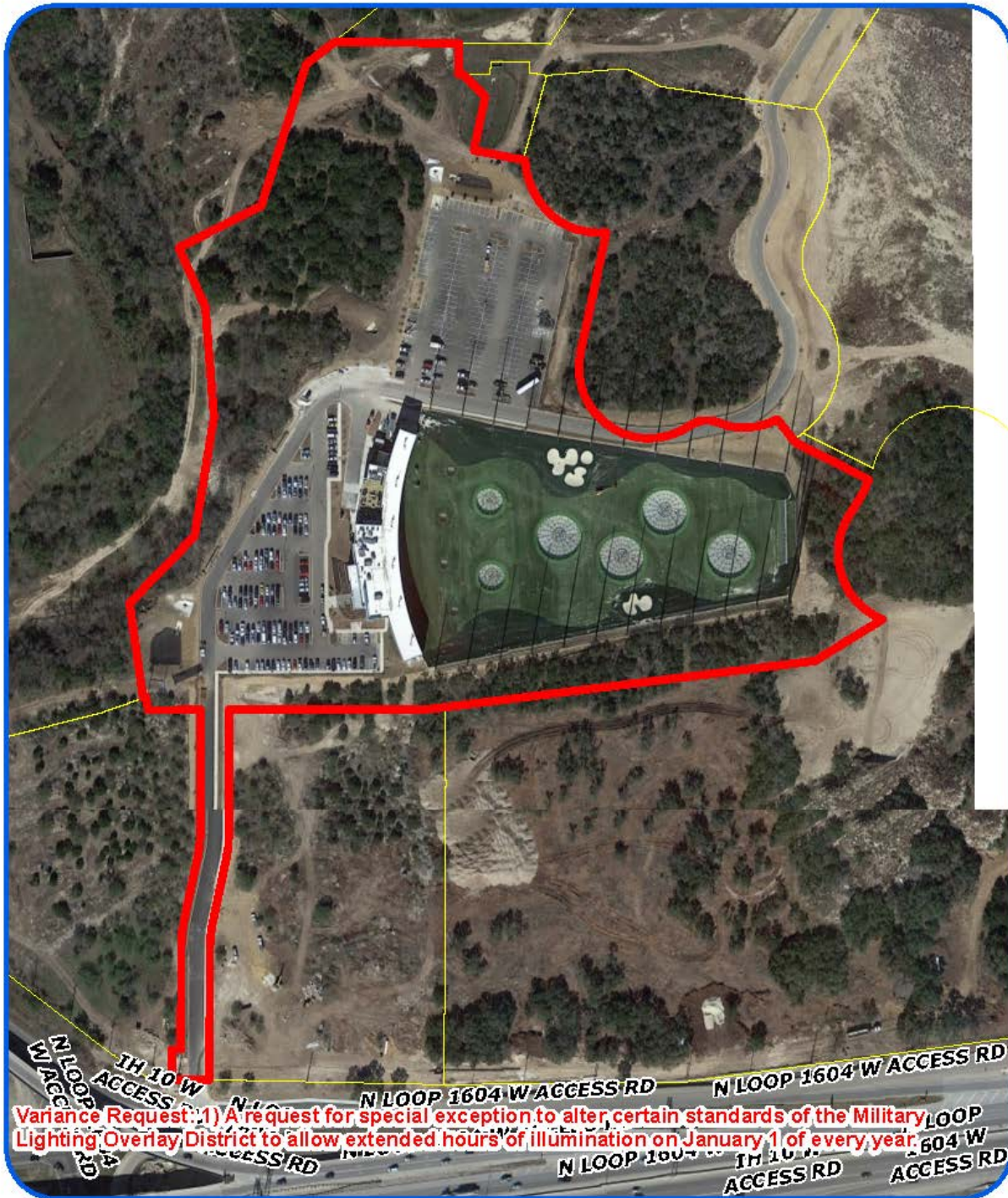


"NOT TO SCALE,
FOR ILLUSTRATIVE PURPOSES ONLY"
Council District: 8

5539 N Loop 1604 West

Development Services Department
City of San Antonio

**Attachment 2
Plot Plan (continued)**



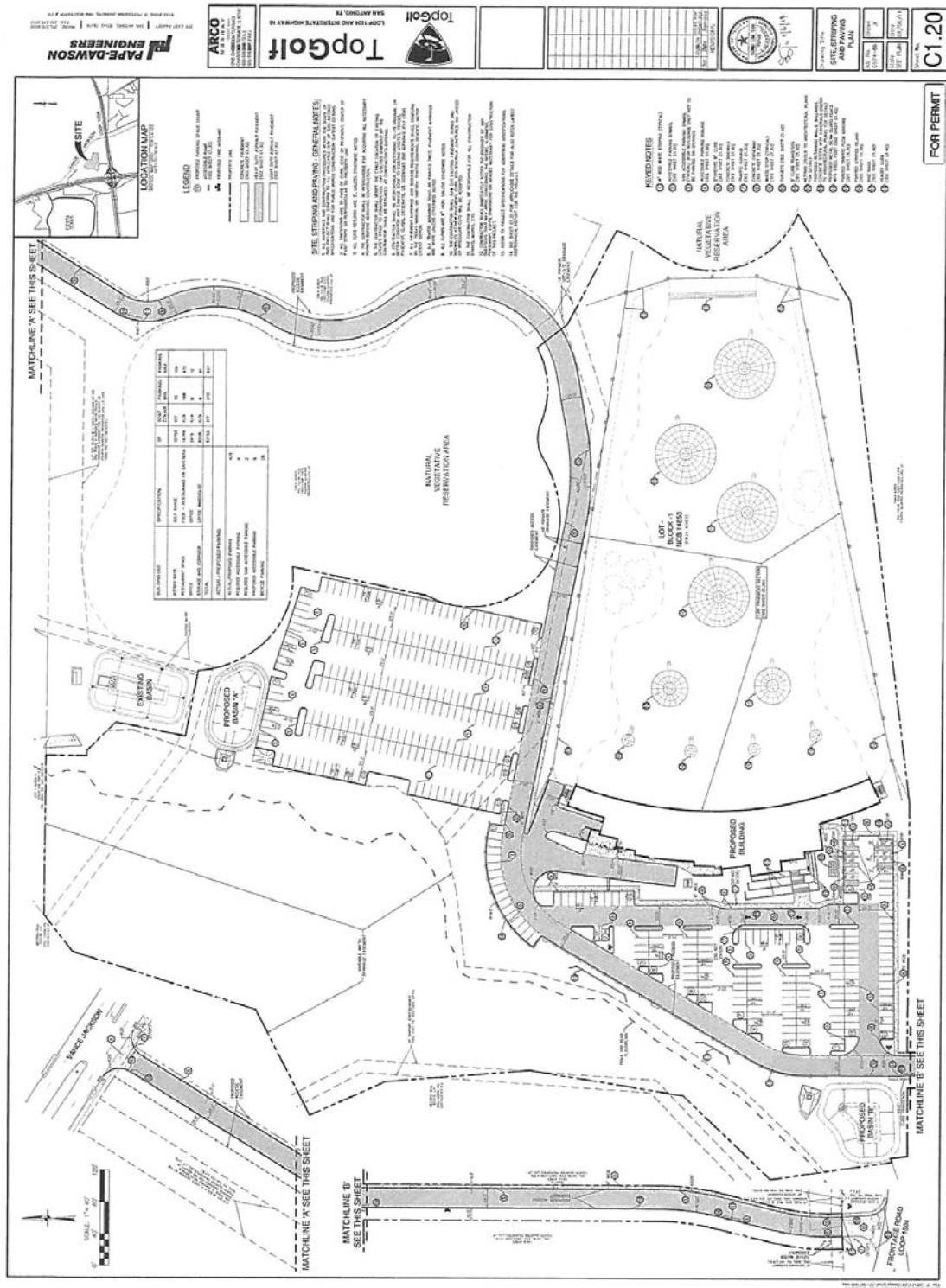
Board of Adjustment
Plot Plan for
Case No A-16-009



"NOT TO SCALE,
FOR ILLUSTRATIVE PURPOSES ONLY"
Council District: 8

5539 N Loop 1604 West

Department of Public Works
City of San Antonio



Attachment 4 – Photos



Attachment 4- Photos



Attachment 5 Letter from Military



DEPARTMENT OF THE AIR FORCE

502D AIR BASE WING

JOINT BASE SAN ANTONIO

7 October 2015

MEMORANDUM FOR City of San Antonio Development Services Department

1. Decision for Request by Top Golf, Extension of Hours of Operation New Year's Eve has been approved.
2. The Following JBSA-LAK Organizations have provided updates to the matter concerning Top Golf Request for Modification Hours of Operation.
 - a. The overall decision provided by the Community Planners is a Concur No Response.
 - b. The Director, Installation Support, JBSA-Camp Bullis is a Concur No Response.
 - c. The Director of Plans, Training, Mobilization and Security has entered a Concur No Response.
3. The Director FSH/CB, Installation Encroachment Management Team Co-Chair has entered a Concur No Response.
4. Point of contact for this action is Sharonn D. Brew, 210-221-0564 or Sharonn.d.brew.civ@mail.mil.

A handwritten signature in blue ink, appearing to read "MARGARET A. REYES", is located above the typed name.

MARGARET A REYES, GS-14 USAF
JBSA Installation Encroachment Manager