

This map displays the Stonefruit area, bounded by Tamarind, Thatch, and Elderberry roads. The area is divided into numerous lots, each labeled with a number and a zoning code (R6 or 1R). A red dashed line outlines the perimeter of the area, and a red solid line indicates a proposed subdivision within the central part of the map. An inset map in the bottom right corner shows the location of the Stonefruit area within a larger regional context, with a red star marking the specific location.

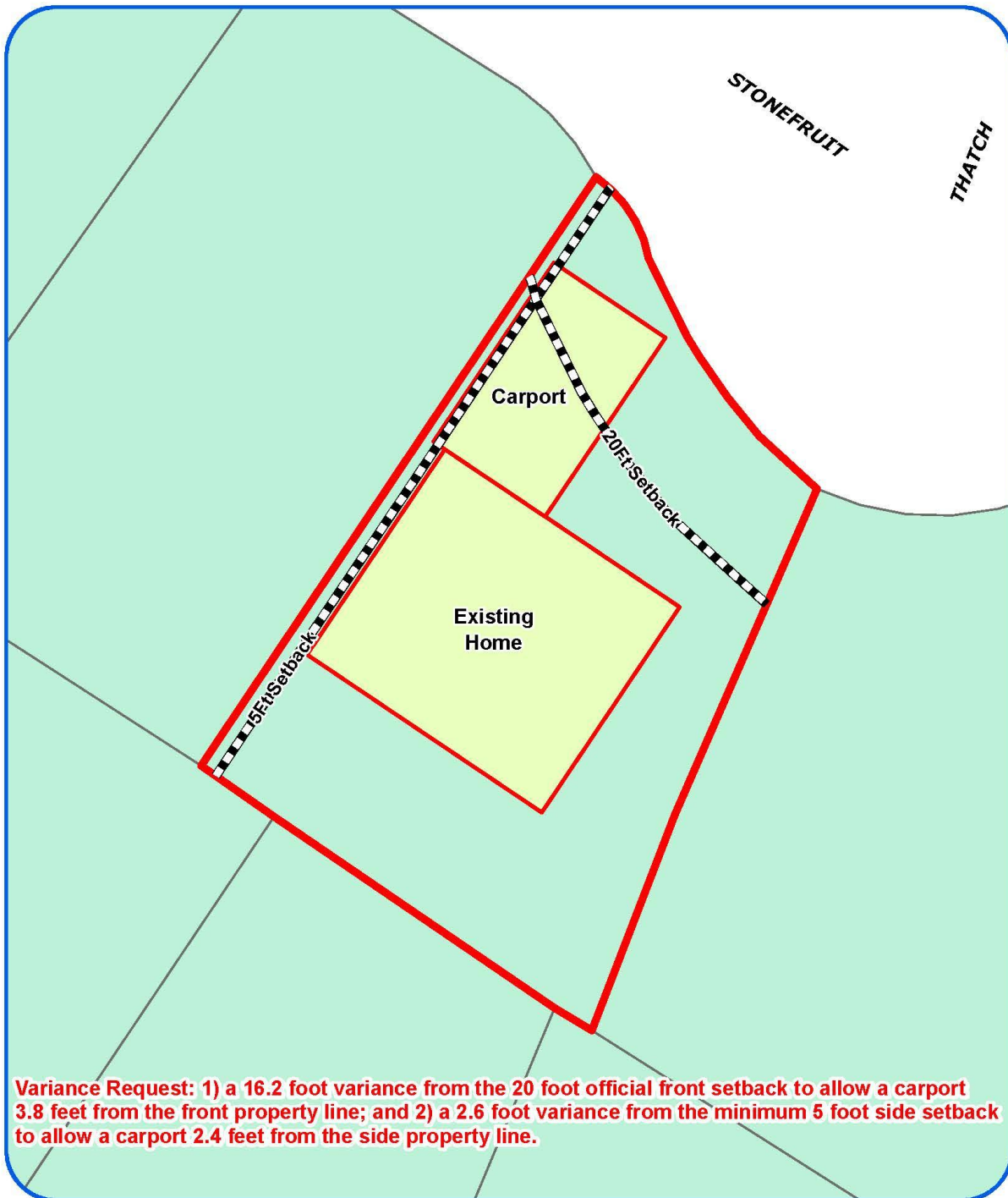


Development Services Department
City of San Antonio

This aerial map displays a residential neighborhood with property boundaries outlined in yellow. A red dashed circle encompasses a central area, and a red solid rectangle highlights a specific lot, 7406. The map includes street names: Tamarind, Thatch, Stonefruit, Elderberry, and Park. Lot numbers are visible, including 8702, 8700, 8707, 8710, 8706, 8703, 8702, 8700, 7422, 7418, 7414, 7440, 7406, 7402, 7427, 7429, 7419, 7415, 7411, 7407, 7403, 7410, 7406, and 7402. Zoning codes (R6, 1R) are also present. A small inset map in the bottom right corner shows the location of the highlighted area within a larger regional context, marked with a red star.

Development Services Department
City of San Antonio

Attachment 2
Plot Plan



Board of Adjustment
Plot Plan for
Case No A-16-021



"NOT TO SCALE,
FOR ILLUSTRATIVE PURPOSES ONLY"
Council District: 7

7406 Stonefruit

Development Services Department
City of San Antonio

Attachment 2
Plot Plan (continued)



Board of Adjustment
Plot Plan for
Case No A-16-021

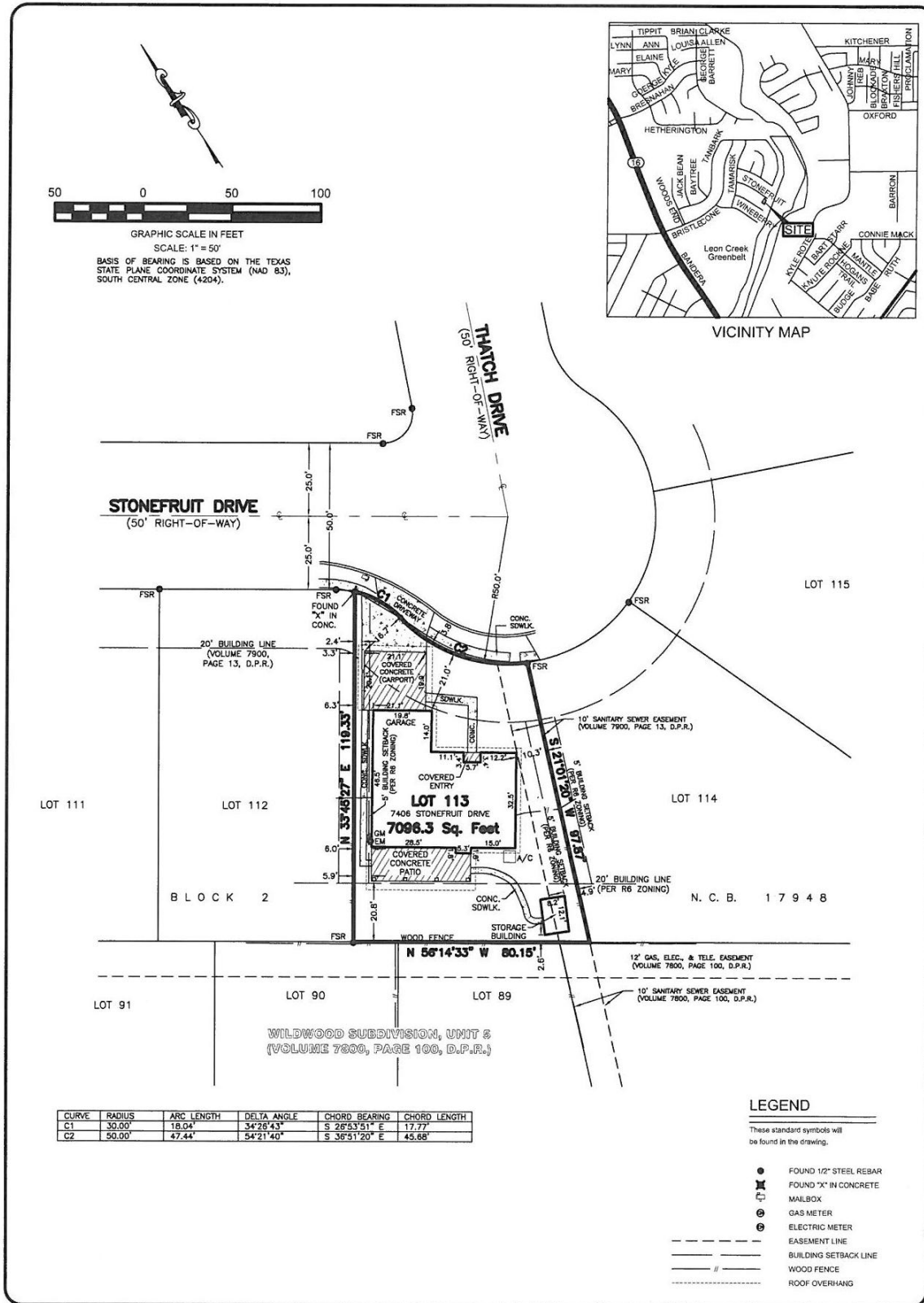


"NOT TO SCALE,
FOR ILLUSTRATIVE PURPOSES ONLY"
Council District: 7

7406 Stonefruit

Deputy Administrative Services Department
City of San Antonio

Attachment 3 **Applicant's Site Plan**



Attachment 4 – Photos
Subject Property – 7406 Stonefruit



Subject Property



Carport in current location



Carport encroachment on side setback

