

This map displays a residential neighborhood with the following details:

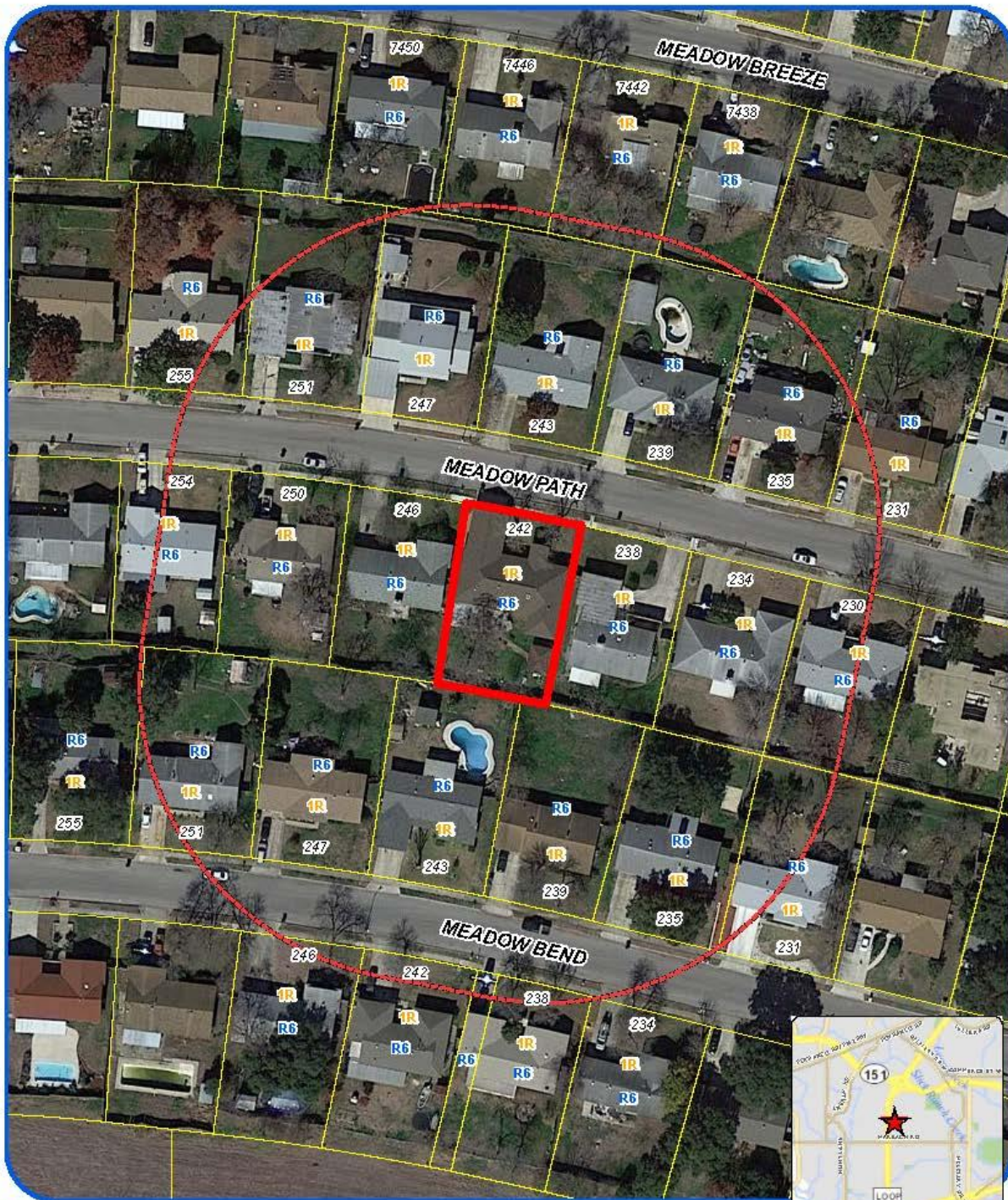
- Streets:** MEADOW BREEZE, MEADOW PATH, and MEADOW BEND.
- Lot Zoning:**
 - R6:** Single-family detached residential.
 - 1R:** Single-family detached residential, medium-density.
- Lot Numbers:** 7450, 7446, 7442, 7438, 255, 251, 247, 243, 239, 235, 231, 254, 250, 246, 242, 238, 234, 230, 255, 251, 247, 243, 239, 235, 231, 246, 242, 238, 234.
- Highlighted Area:** A red dashed circle encompasses a central portion of the map, and a red rectangle highlights lot 242.
- Inset Map:** Located in the bottom right corner, showing the area's location relative to Mesa, AZ, with a red star indicating the specific site.



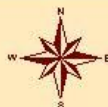
"NOT TO SCALE,
FOR ILLUSTRATIVE PURPOSES ONLY"

Development Services Department
City of San Antonio

Attachment 1 Notification Plan (continued)



Board of Adjustment
Notification Plan for
Case No A-16-022



San Antonio City Limits
Subject Property
200' Notification Boundary
Council District 6



"NOT TO SCALE,
FOR ILLUSTRATIVE PURPOSES ONLY"

Development Services Department
City of San Antonio

**Attachment 2
Plot Plan**



Board of Adjustment
Plot Plan for
Case No A-16-022



"NOT TO SCALE,
FOR ILLUSTRATIVE PURPOSES ONLY"
Council District: 6

242 Meadow Path

Development Services Department
City of San Antonio

Attachment 2
Plot Plan (continued)



Board of Adjustment
Plot Plan for
Case No A-16-022

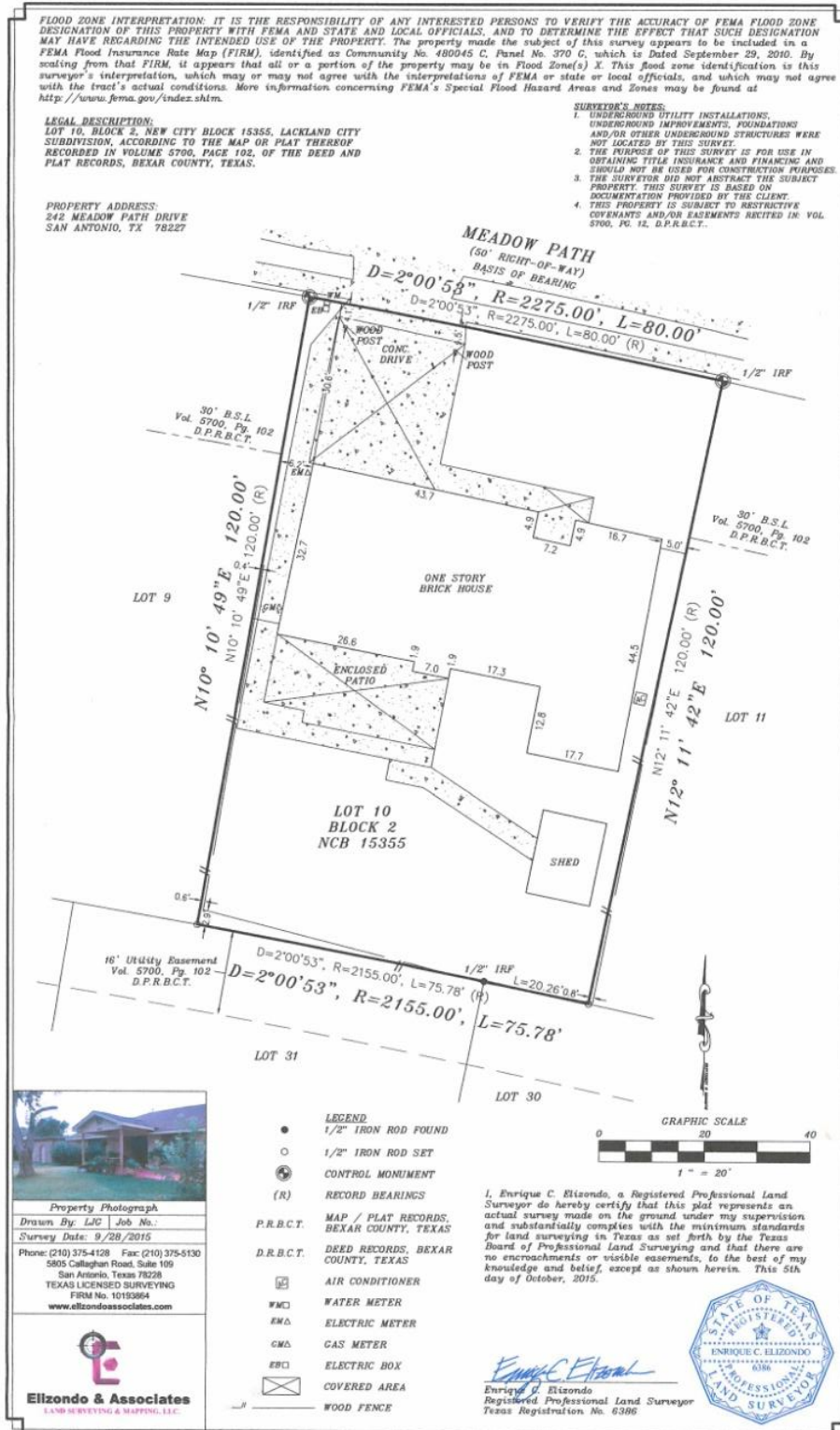


"NOT TO SCALE,
FOR ILLUSTRATIVE PURPOSES ONLY"
Council District: 6

242 Meadow Path

Deputy Information Services Department
City of San Antonio

Attachment 3 Applicant's Site Plan



Attachment 4 – Photos
Subject Property – 242 Meadow Path



Subject Property



Another carport in the neighborhood built respecting front setback

