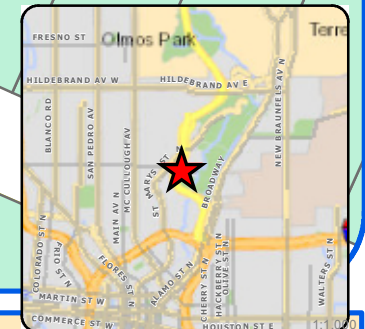


# **Board of Adjustment** **Notification Plan for** **Case No A-16-028**



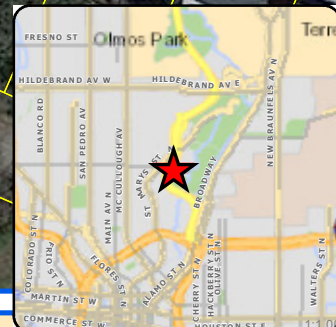
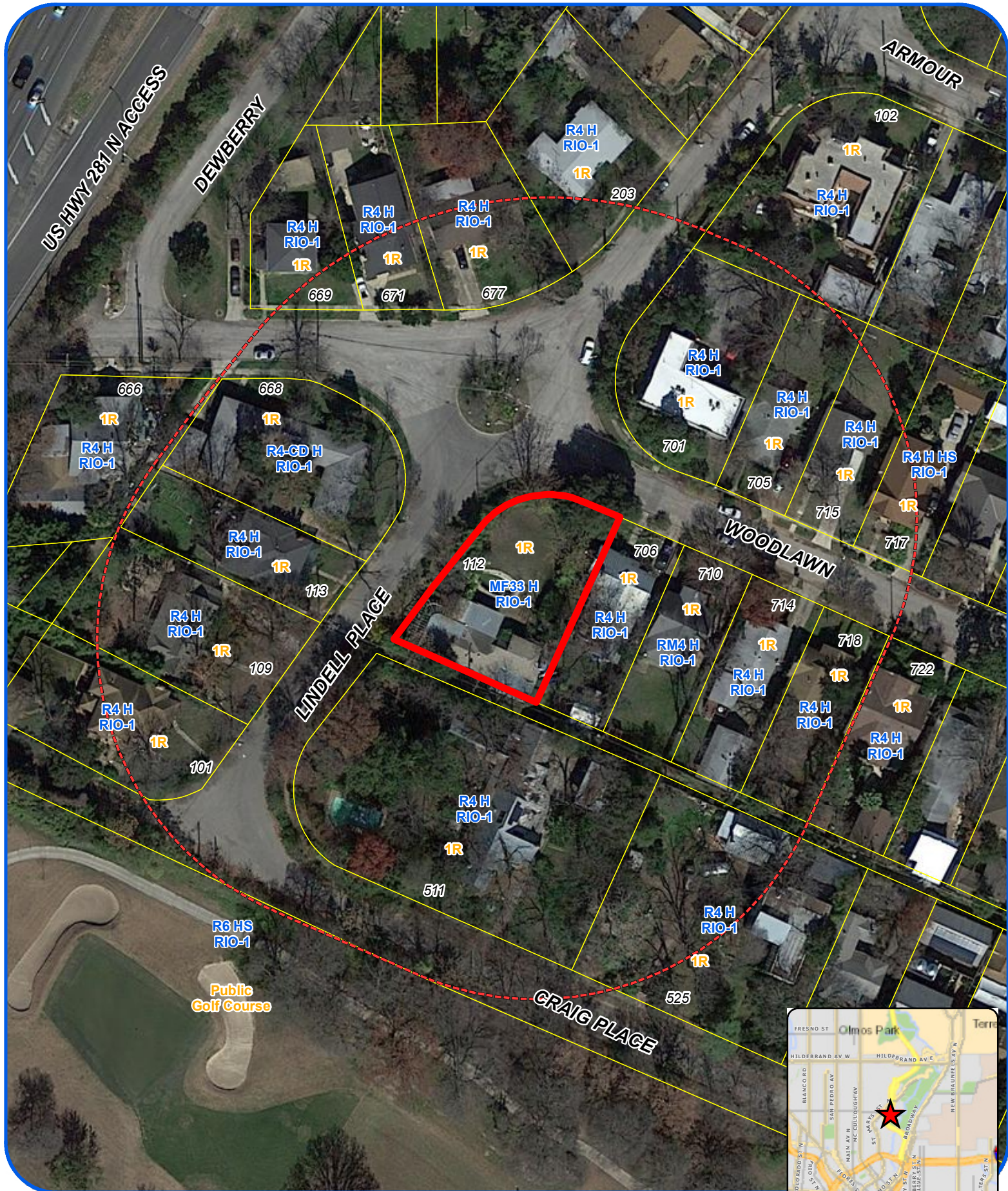
- San Antonio City Limits
- Subject Property
- 200' Notification Boundary
- Council District: 1



"NOT TO SCALE,  
 FOR ILLUSTRATIVE PURPOSES ONLY"

Development Services Department  
 City of San Antonio





# **Board of Adjustment** **Notification Plan for** **Case No A-16-028**



San Antonio City Limits



Subject Property



200' Notification Boundary



Council District: 1

"NOT TO SCALE,  
 FOR ILLUSTRATIVE PURPOSES ONLY"

Development Services Department  
 City of San Antonio



LINDELL PLACE

LINDELL PLACE

E WOODLAWN AVE

Proposed  
Building

Existing  
Home

**Variance Request: 1) An appeal of the Historic Preservation Officer's decision regarding proposed construction and partial demolition.**

**Board of Adjustment**  
**Plot Plan for**  
**Case No A-16-028**



"NOT TO SCALE,  
FOR ILLUSTRATIVE PURPOSES ONLY"  
Council District: 1

**112 Lindell Place**

Development Services Department  
City of San Antonio

1:300



**Variance Request: 1) An appeal of the Historic Preservation Officer's decision regarding proposed construction and partial demolition.**

**Board of Adjustment**  
**Plot Plan for**  
**Case No A-16-028**



"NOT TO SCALE,  
FOR ILLUSTRATIVE PURPOSES ONLY"  
Council District: 1

**112 Lindell Place**

1:300

Development Services Department  
City of San Antonio