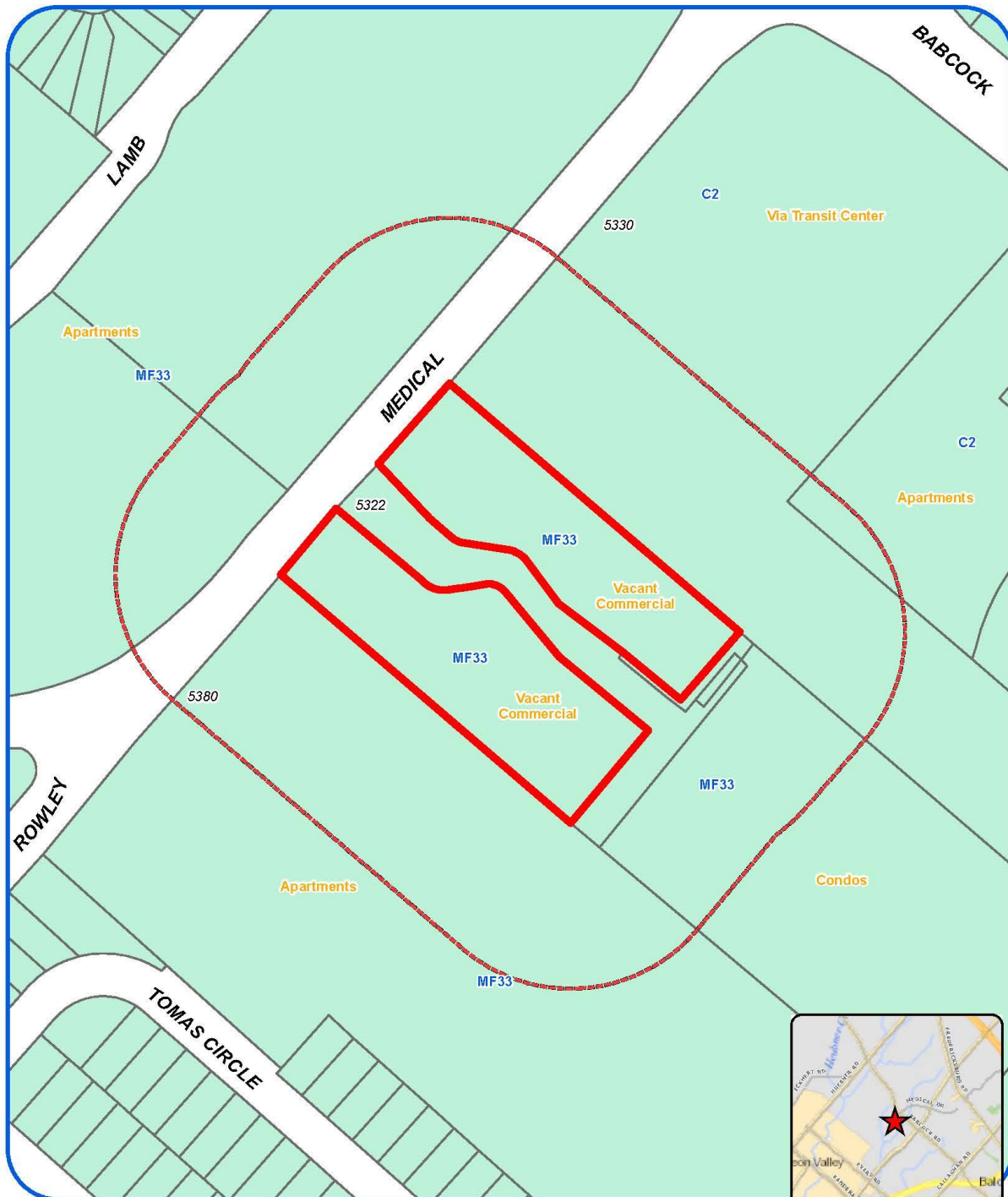


Attachment 1 Notification Plan



Board of Adjustment
Notification Plan for
Case No A-16-088



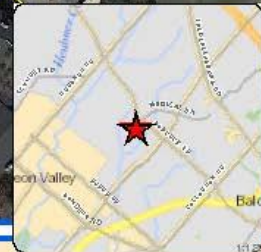
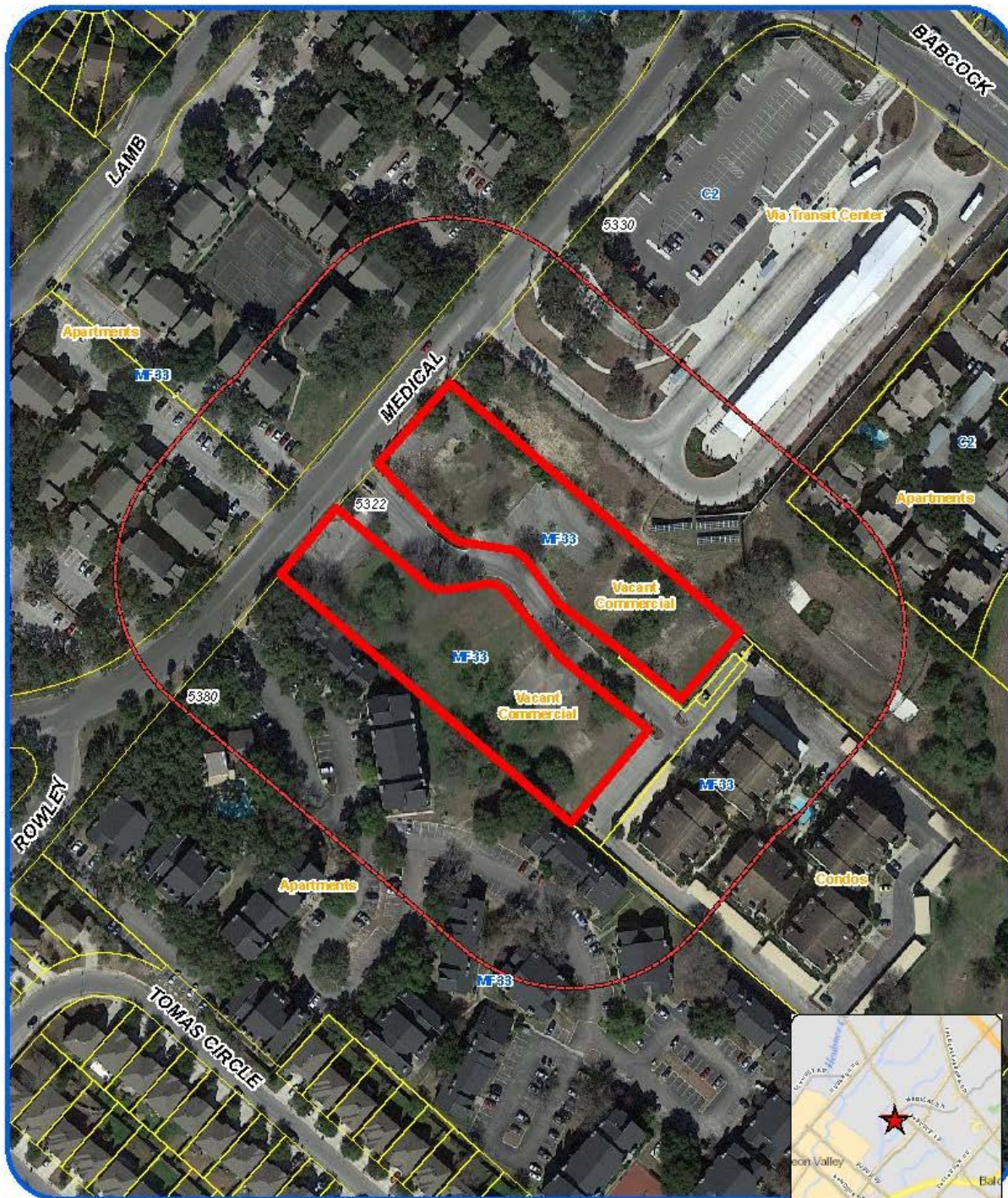
San Antonio City Limits
Subject Property
200' Notification Boundary
Council District: 7



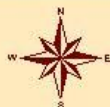
"NOT TO SCALE,
FOR ILLUSTRATIVE PURPOSES ONLY"

Development Services Department
City of San Antonio

Attachment 1 Notification Plan (continued)



Board of Adjustment
Notification Plan for
Case No A-16-088



San Antonio City Limits
Subject Property
200' Notification Boundary
Council District: 7



"NOT TO SCALE,
FOR ILLUSTRATIVE PURPOSES ONLY"

Deane Kpeme at Services Department
City of San Antonio

**Attachment 2
Plot Plan**



Board of Adjustment
Plot Plan for
Case No A-16-088



"NOT TO SCALE,
FOR ILLUSTRATIVE PURPOSES ONLY"
Council District: 7

5322 Medical Dr

Development Services Department
City of San Antonio

Attachment 2
Plot Plan (continued)



Board of Adjustment
Plot Plan for
Case No A-16-088

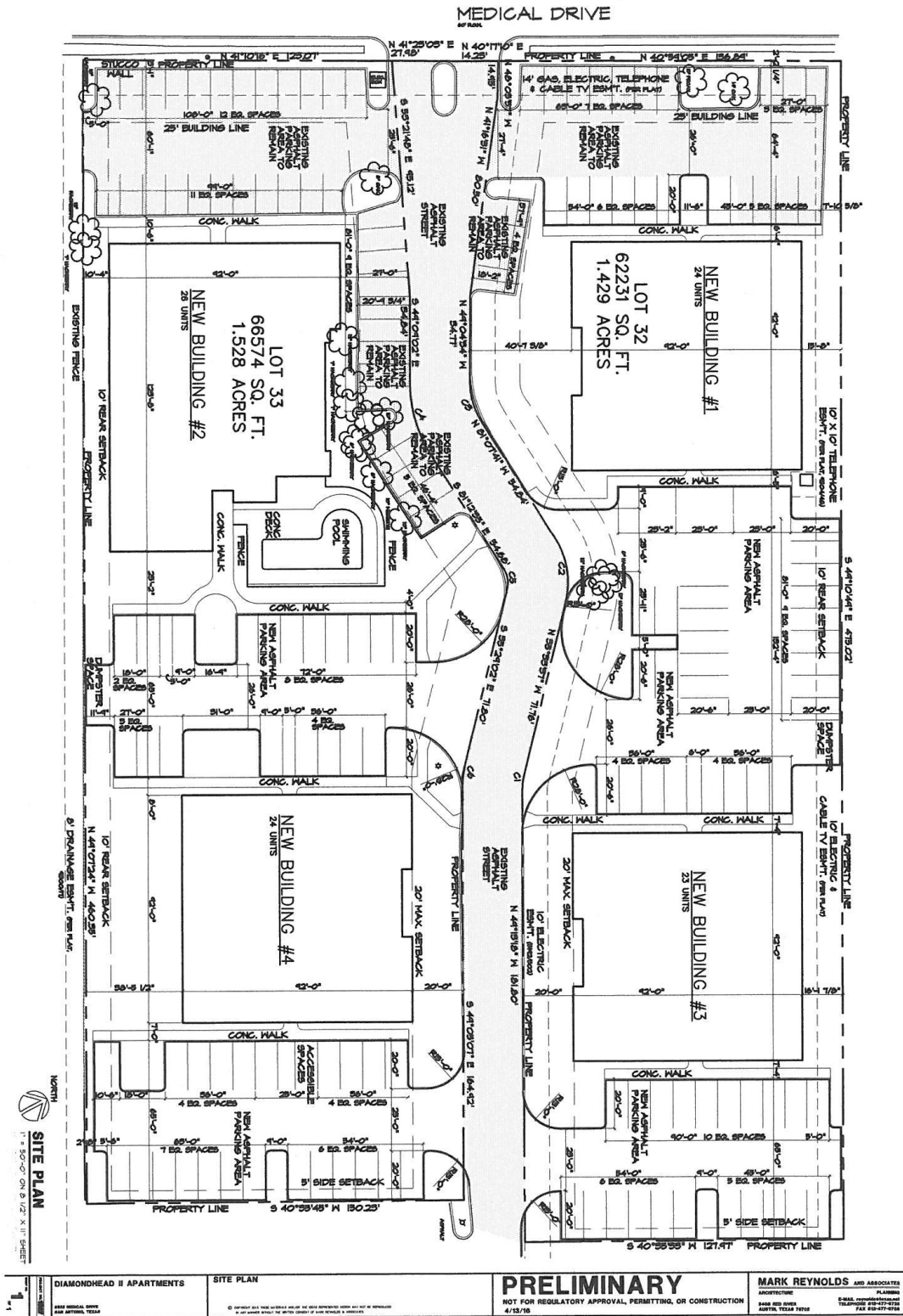


"NOT TO SCALE,
FOR ILLUSTRATIVE PURPOSES ONLY"
Council District: 7

5322 Medical Dr

Development Services Department
City of San Antonio

Attachment 3 Applicant's Site Plan



Attachment 4 – Photos
Subject Property – 5322 Medical Drive



Parking lot in current location



Parking lot in current location



Current screening along Medical Drive

