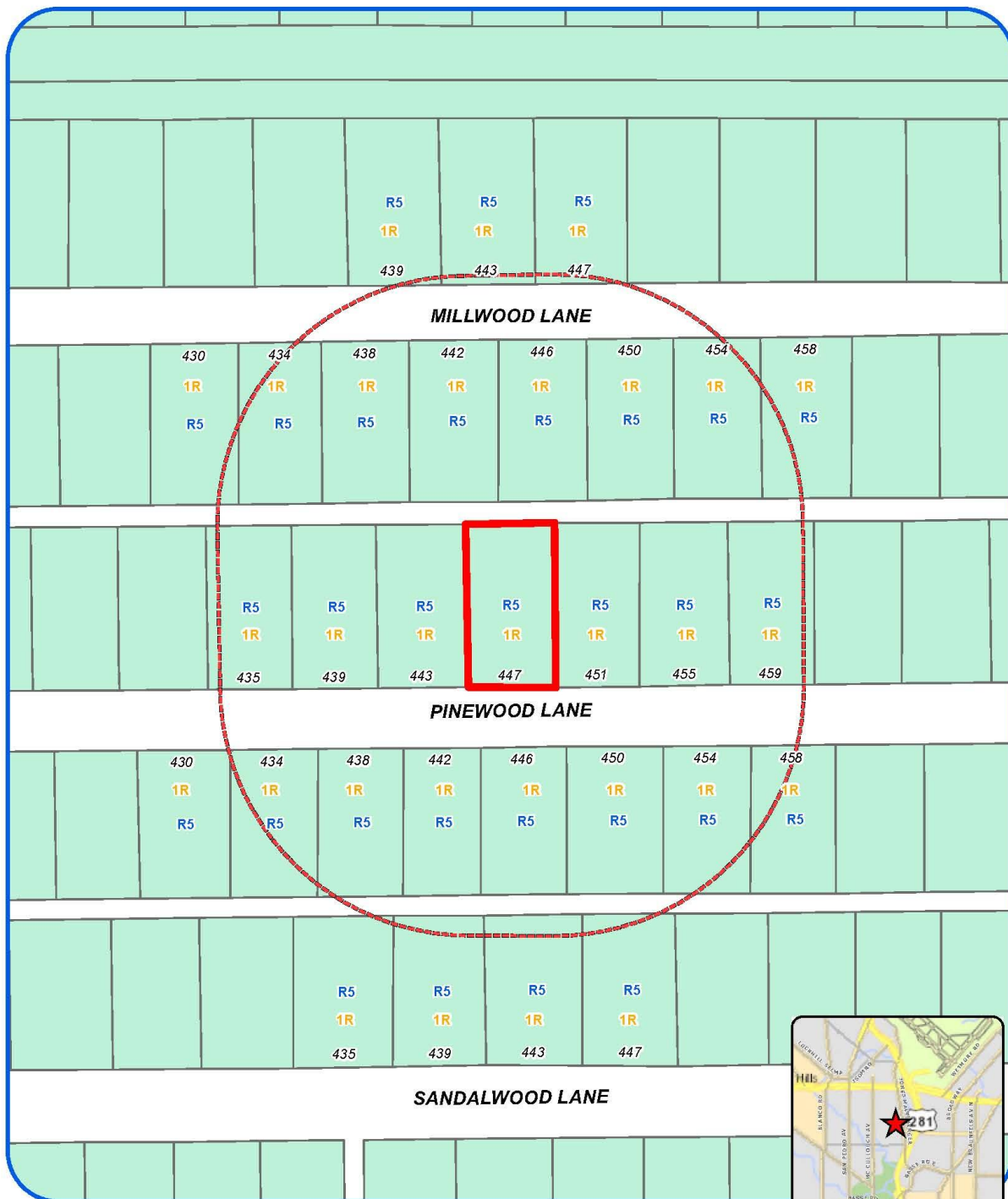


Attachment 1 Notification Plan



Board of Adjustment
Notification Plan for
Case No A-16-077



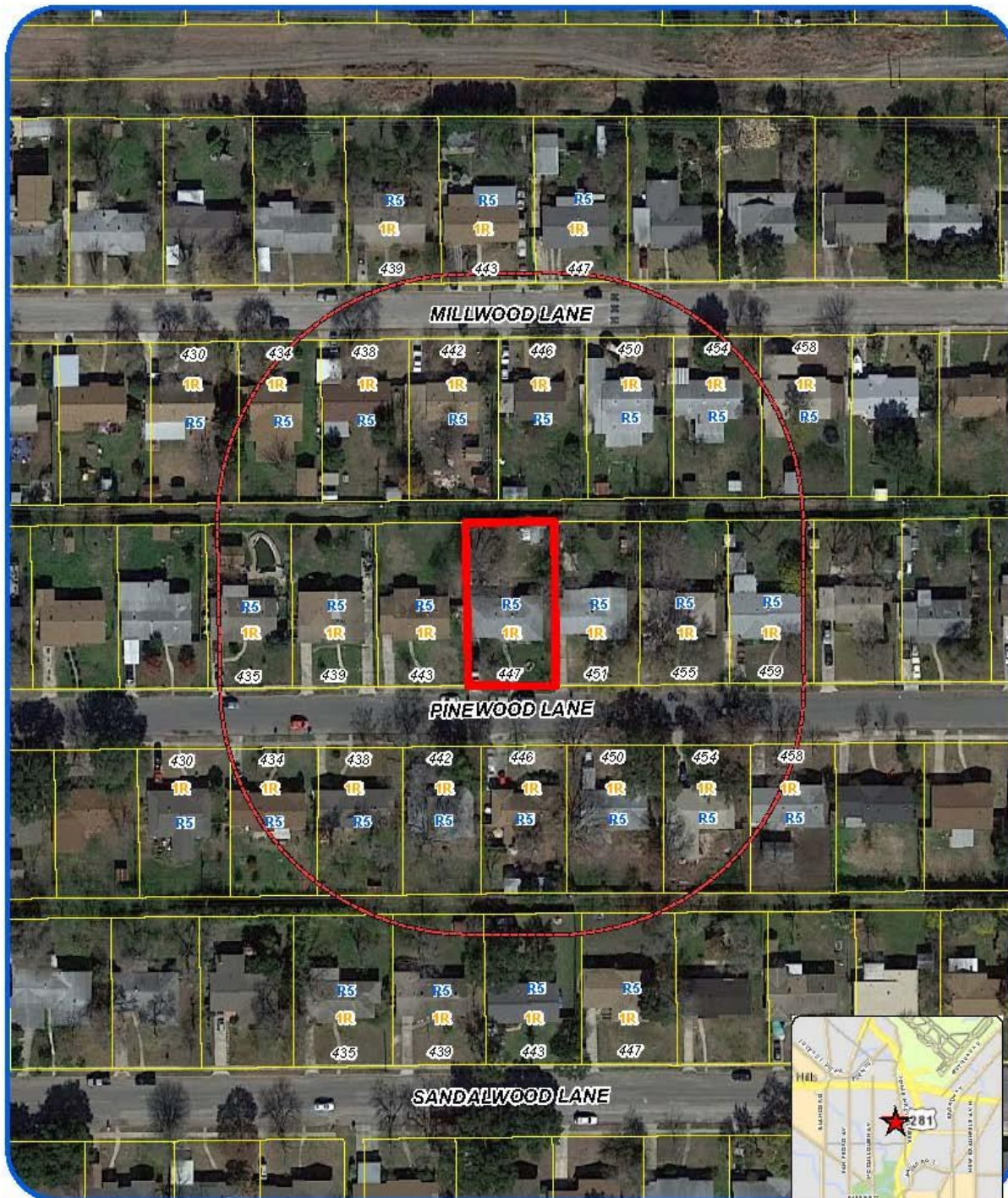
San Antonio City Limits
Subject Property
200' Notification Boundary
Council District 1



"NOT TO SCALE,
FOR ILLUSTRATIVE PURPOSES ONLY"

Development Services Department
City of San Antonio

Attachment 1 Notification Plan (continued)



Board of Adjustment
Notification Plan for
Case No A-16-077



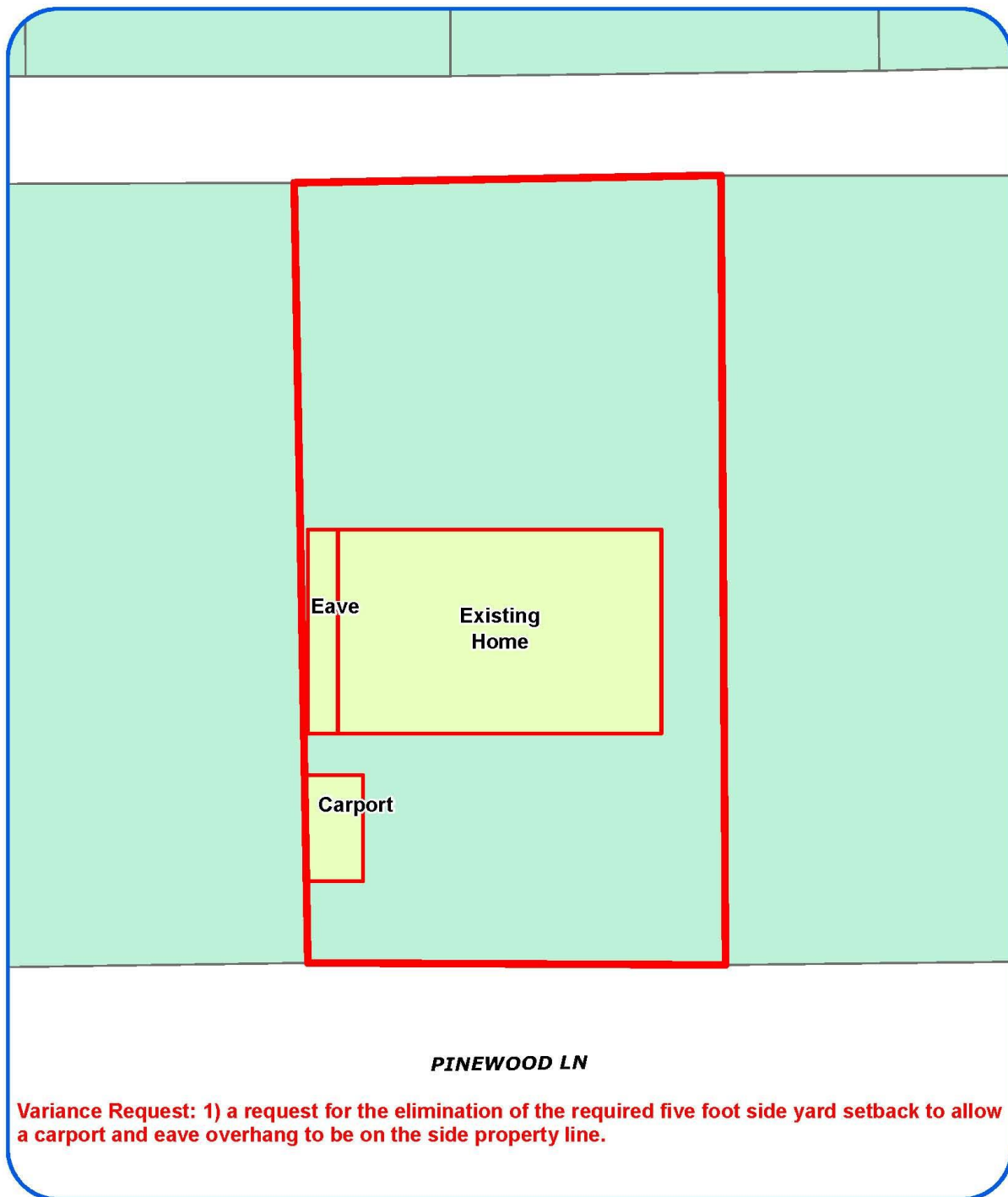
San Antonio City Limits
Subject Property
200' Notification Boundary
Council District: 1



*NOT TO SCALE,
FOR ILLUSTRATIVE PURPOSES ONLY*

Deane Kpeme at Services Department
City of San Antonio

**Attachment 2
Plot Plan**



Board of Adjustment
Plot Plan for
Case No A-16-077



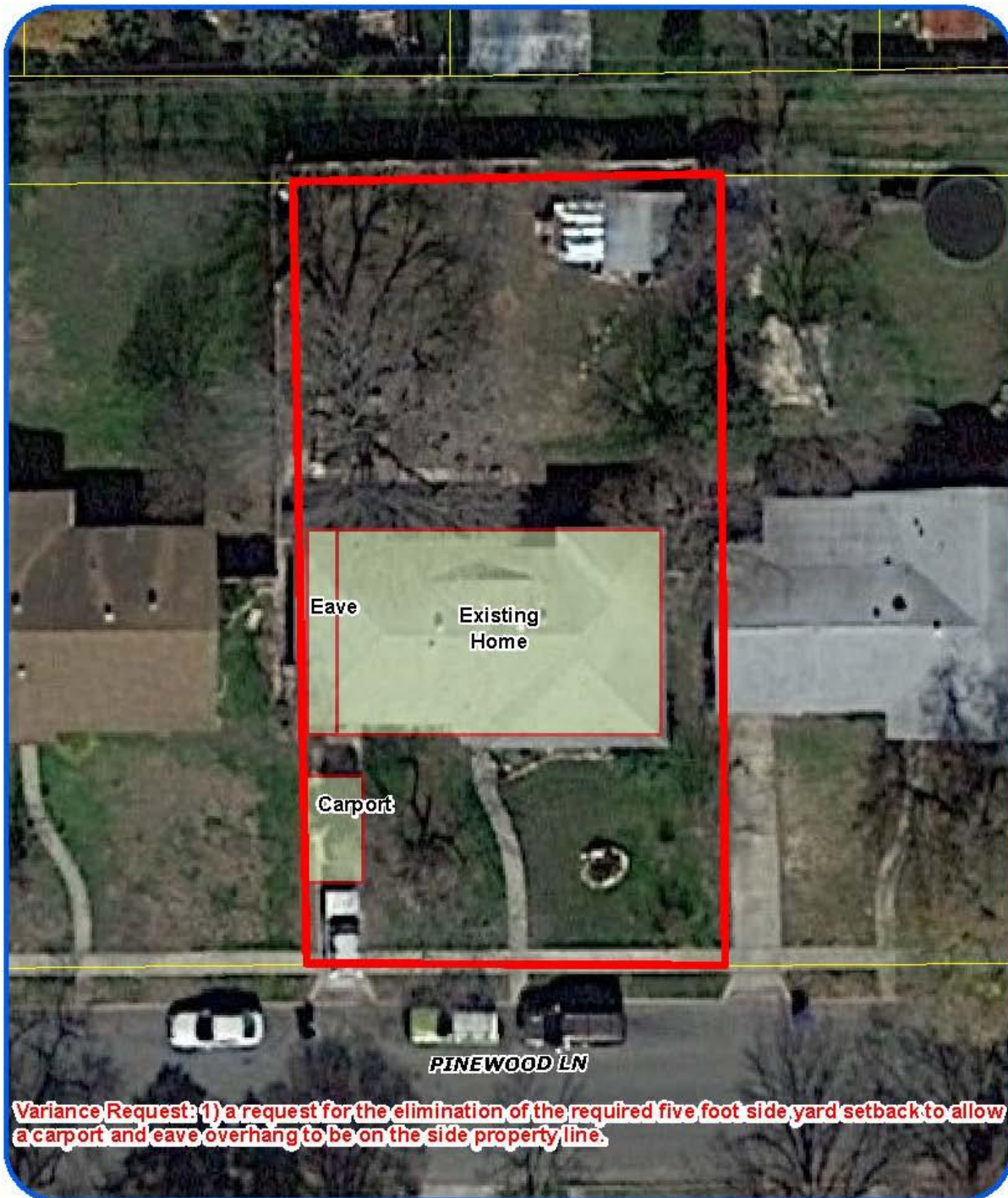
"NOT TO SCALE,
FOR ILLUSTRATIVE PURPOSES ONLY"
Council District: 1

447 Pinewood Lane

Development Services Department
City of San Antonio

1/250

Attachment 2
Plot Plan (continued)



Board of Adjustment
Plot Plan for
Case No A-16-077



"NOT TO SCALE,
FOR ILLUSTRATIVE PURPOSES ONLY"
Council District: 1

447 Pinewood Lane

Deputy Director of Services Department
City of San Antonio

PLOT PLAN

FOR

BLDG PERMITS

NCB 12069

PINEWOOD STREET

Attachment 4 – Photos
Subject Property – 447 Pinewood Lane



Eave extended on house



Carport meets front setback



Example of carport common in community



Example of carport common in community



Example of carport common in community



Example of carport common in community

