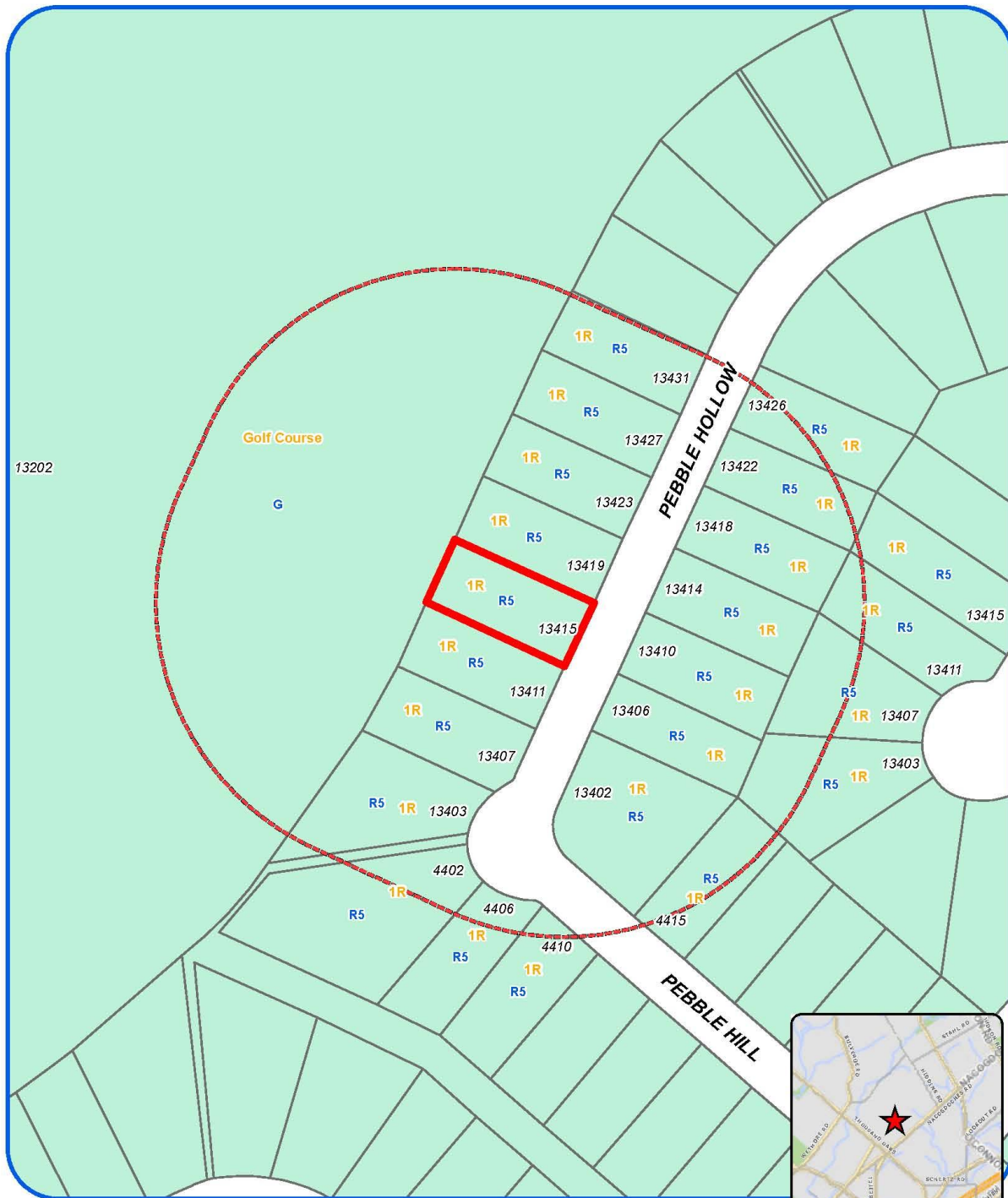


Attachment 1 Notification Plan



Board of Adjustment Notification Plan for Case No A-16-079



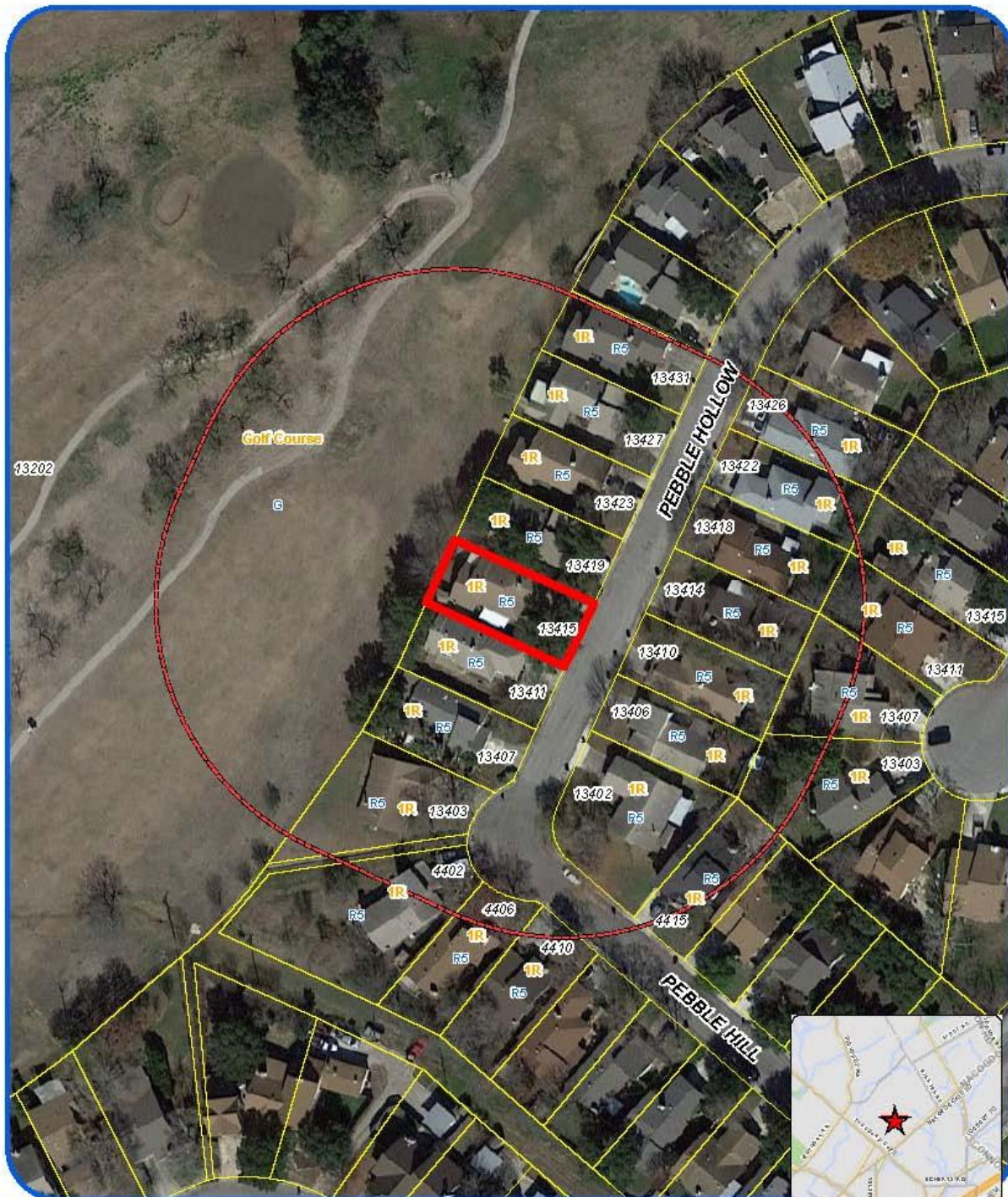
San Antonio City Limits
Subject Property
200' Notification Boundary
Council District: 10



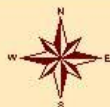
"NOT TO SCALE,
FOR ILLUSTRATIVE PURPOSES ONLY"

Development Services Department
City of San Antonio

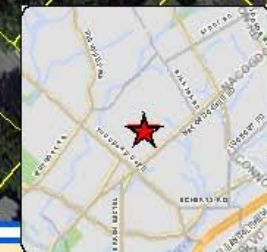
Attachment 1 Notification Plan (continued)



Board of Adjustment
Notification Plan for
Case No A-16-079



San Antonio City Limits
Subject Property
200' Notification Boundary
Council District: 10



*NOT TO SCALE,
FOR ILLUSTRATIVE PURPOSES ONLY

Deane Kpeme at Services Department
City of San Antonio

**Attachment 2
Plot Plan**



Board of Adjustment
Plot Plan for
Case No A-16-079



"NOT TO SCALE,
FOR ILLUSTRATIVE PURPOSES ONLY"
Council District: 10

13415 Pebble Hollow

Development Services Department
City of San Antonio

Attachment 2
Plot Plan (continued)



Board of Adjustment
Plot Plan for
Case No A-16-079

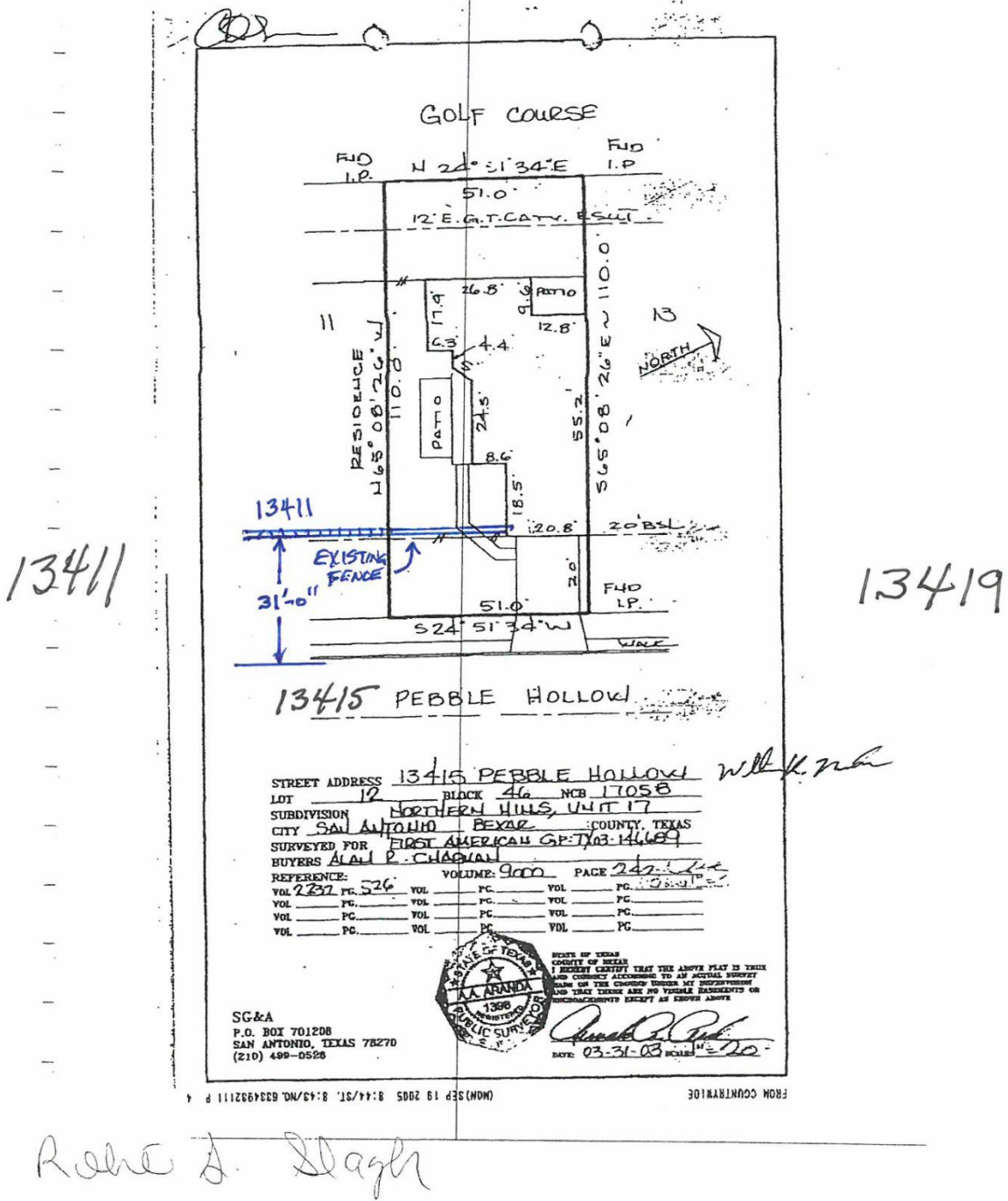


"NOT TO SCALE,
FOR ILLUSTRATIVE PURPOSES ONLY"
Council District: 10

13415 Pebble Hollow

Deputy Planning Services Department
City of San Antonio

Applicant's Site Plan Attachment 3



Attachment 4 – Photos
Subject Property – 13415 Pebble Hollow



Fence



Fence

