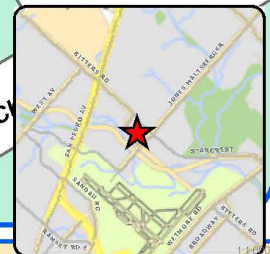
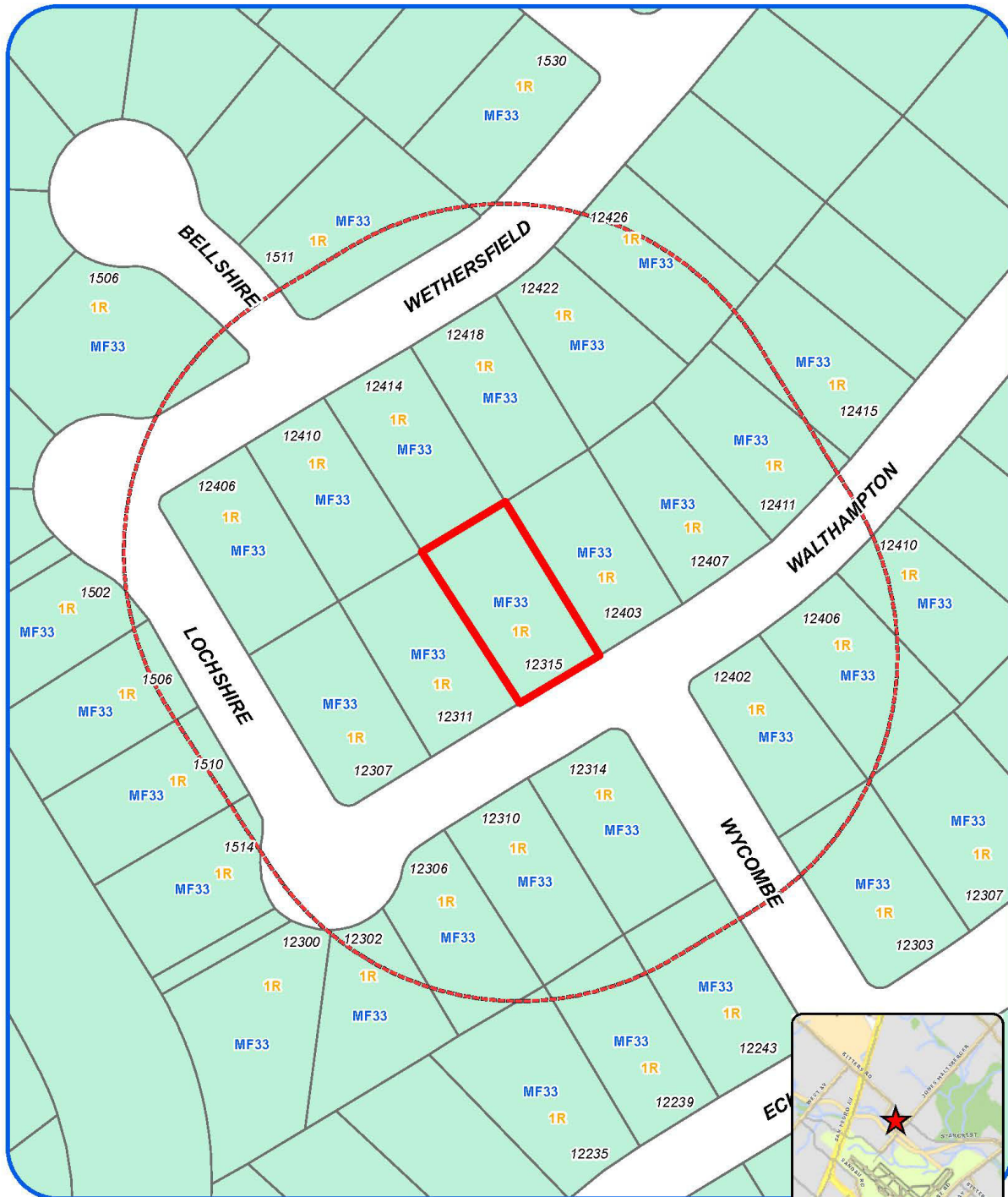


Attachment 1 Notification Plan



Board of Adjustment Notification Plan for Case No A-16-107



San Antonio City Limits
Subject Property
200' Notification Boundary
Council District 9



"NOT TO SCALE,
FOR ILLUSTRATIVE PURPOSES ONLY"

Development Services Department
City of San Antonio

**Board of Adjustment
Notification Plan for
Case No A-16-107**

San Antonio City Limits
Subject Property
200' Notification Boundary
Council District 9

*NOT TO SCALE,
FOR ILLUSTRATIVE PURPOSES ONLY*

Deputy Services Department
City of San Antonio

**Attachment 2
Plot Plan**



Board of Adjustment
Plot Plan for
Case No A-16-107



"NOT TO SCALE,
FOR ILLUSTRATIVE PURPOSES ONLY"
Council District: 9

12315 Walthampton St

Development Services Department
City of San Antonio

Attachment 2
Plot Plan (continued)



Board of Adjustment
Plot Plan for
Case No A-16-107

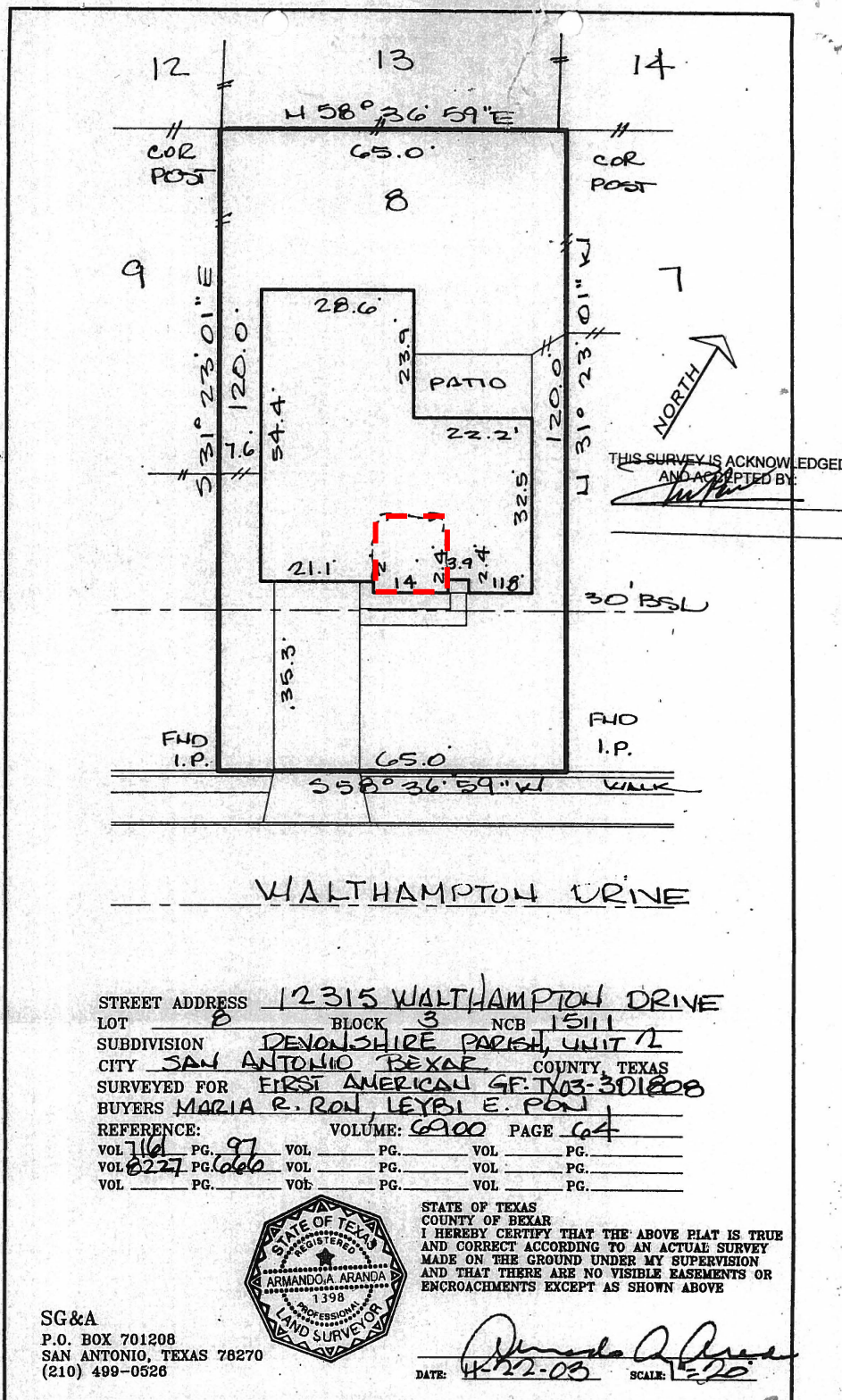


"NOT TO SCALE,
FOR ILLUSTRATIVE PURPOSES ONLY"
Council District: 9

12315 Walthampton St

Development Services Department
City of San Antonio

Attachment 3 Applicant's Site Plan



Attachment 4 – Photos
Subject Property – 12315 Walthampton Street



Walthampton Street Streetscape



Walthampton Streets Streetscape



Walthampton Street

