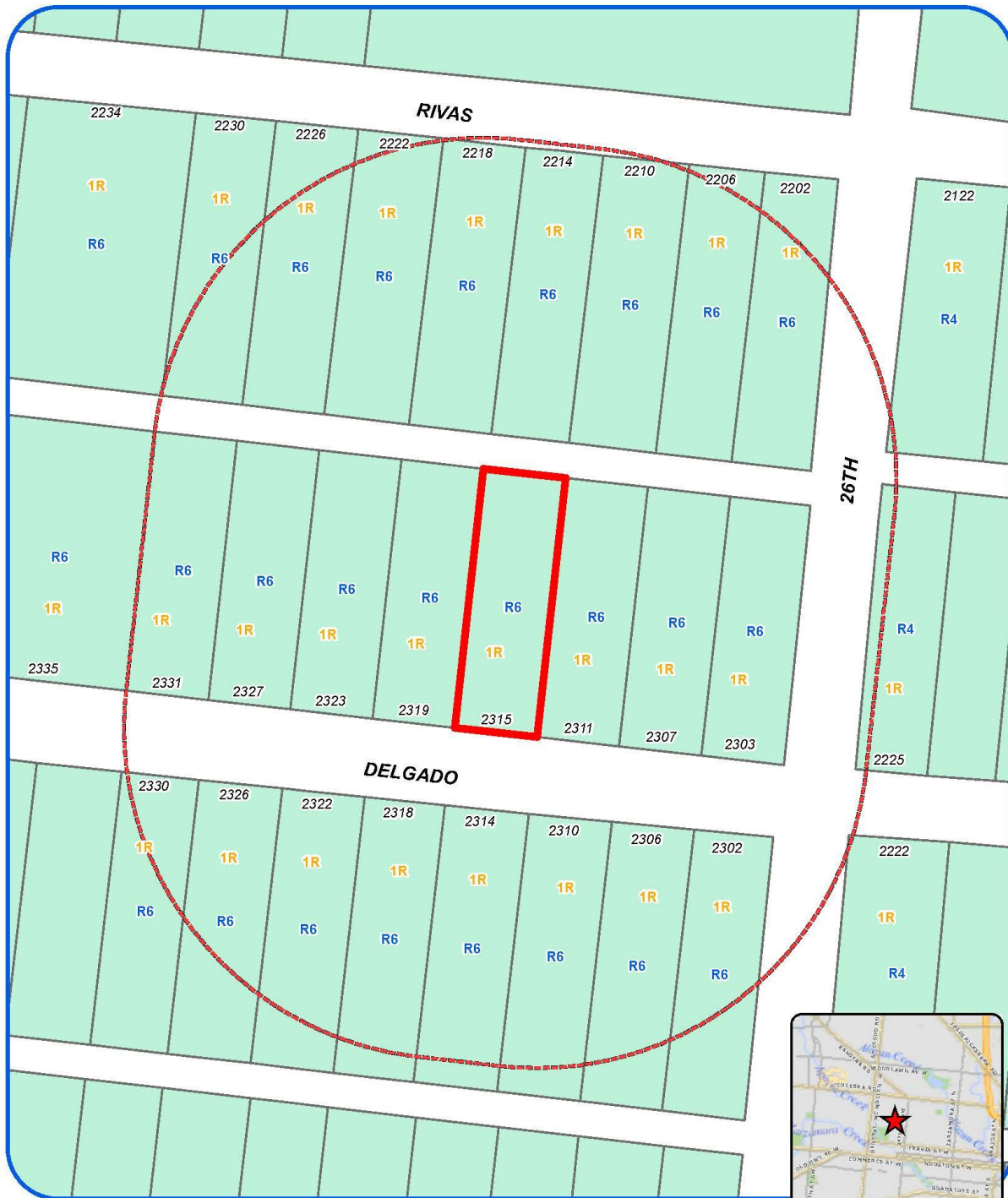


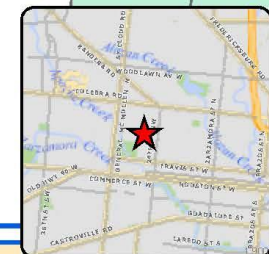
Attachment 1 Notification Plan



Board of Adjustment
Notification Plan for
Case No A-16-097



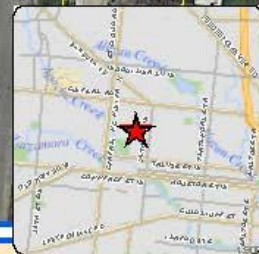
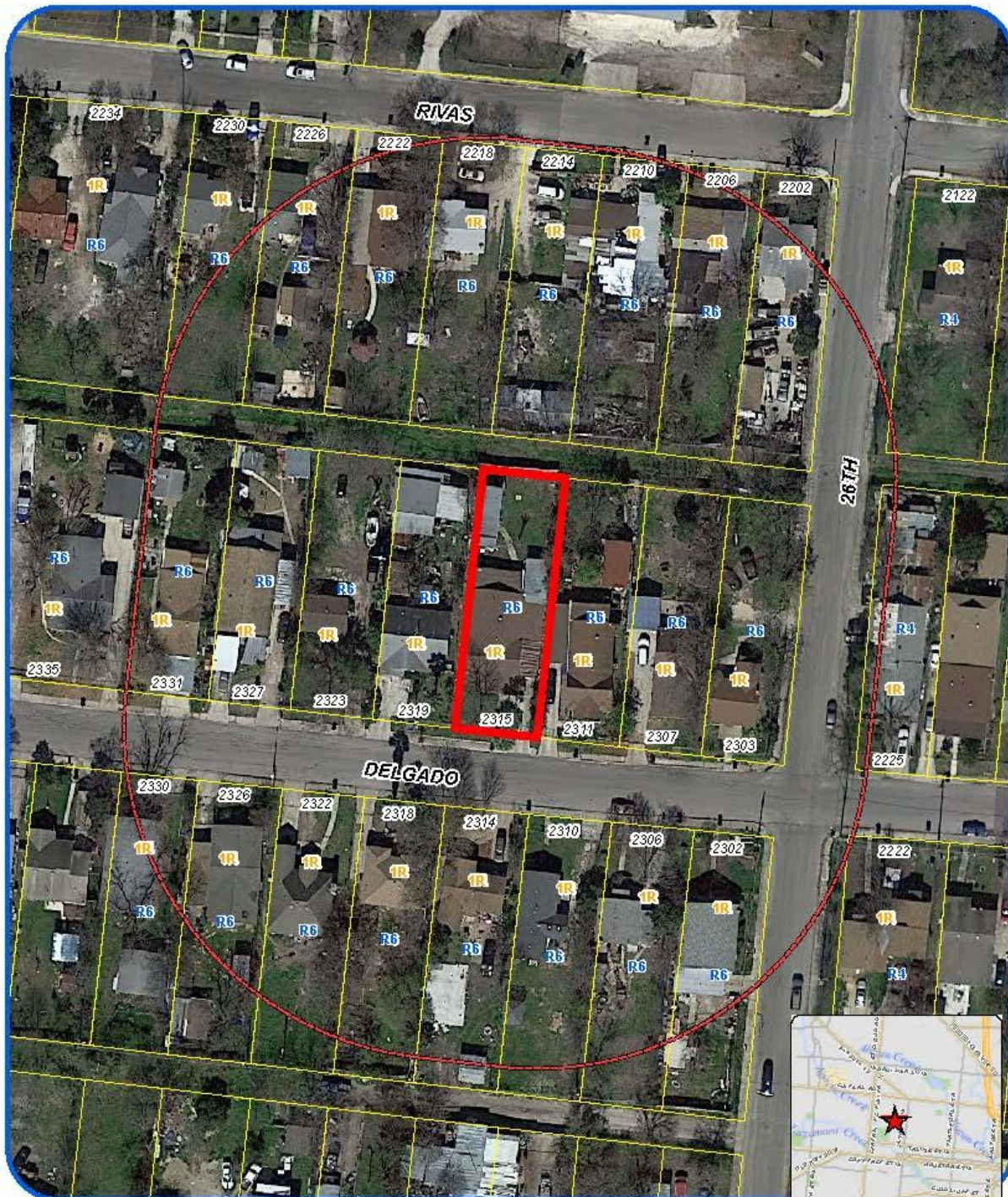
San Antonio City Limits
Subject Property
200' Notification Boundary
Council District 5



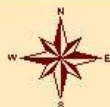
"NOT TO SCALE,
FOR ILLUSTRATIVE PURPOSES ONLY"

Development Services Department
City of San Antonio

Attachment 1 **Notification Plan (continued)**



Board of Adjustment
Notification Plan for
Case No A-16-097



San Antonio City Limits
 Subject Property
 200' Notification Boundary
 Council District 5



***NOT TO SCALE,
 FOR ILLUSTRATIVE PURPOSES ONLY***

Deane Kpeme at Services Department
 City of San Antonio

**Attachment 2
Plot Plan**



Board of Adjustment
Plot Plan for
Case No A-16-097



"NOT TO SCALE,
FOR ILLUSTRATIVE PURPOSES ONLY"
Council District: 5

2315 Delgado St

Development Services Department
City of San Antonio

Attachment 2
Plot Plan (continued)



Board of Adjustment
Plot Plan for
Case No A-16-097



"NOT TO SCALE,
FOR ILLUSTRATIVE PURPOSES ONLY"
Council District: 5

2315 Delgado St

Deputy Director Services Department
City of San Antonio

Hand-drawn site plan on graph paper showing a property layout. The plan includes a 'House', a 'Porch', a 'Car Port', and a 'Driveway'. Dimensions are given in feet and inches.

- House:** A rectangle with a diagonal line. Dimensions: 65' high, 5' wide.
- Porch:** A rectangle below the house. Dimensions: 24' high, 5' wide.
- Car Port:** A vertical strip to the right of the house and porch. Dimensions: 70' high, 11'5" wide.
- Driveway:** A vertical strip at the bottom right. Dimensions: 35'10" high, 8" wide.

The total width of the property is 11'5". The total height of the property is 65' + 24' + 35'10" = 124'10".

Attachment 4 – Photos
Subject Property – 2315 Delgado



Carport encroaching into side setback



Distance between adjacent structures

