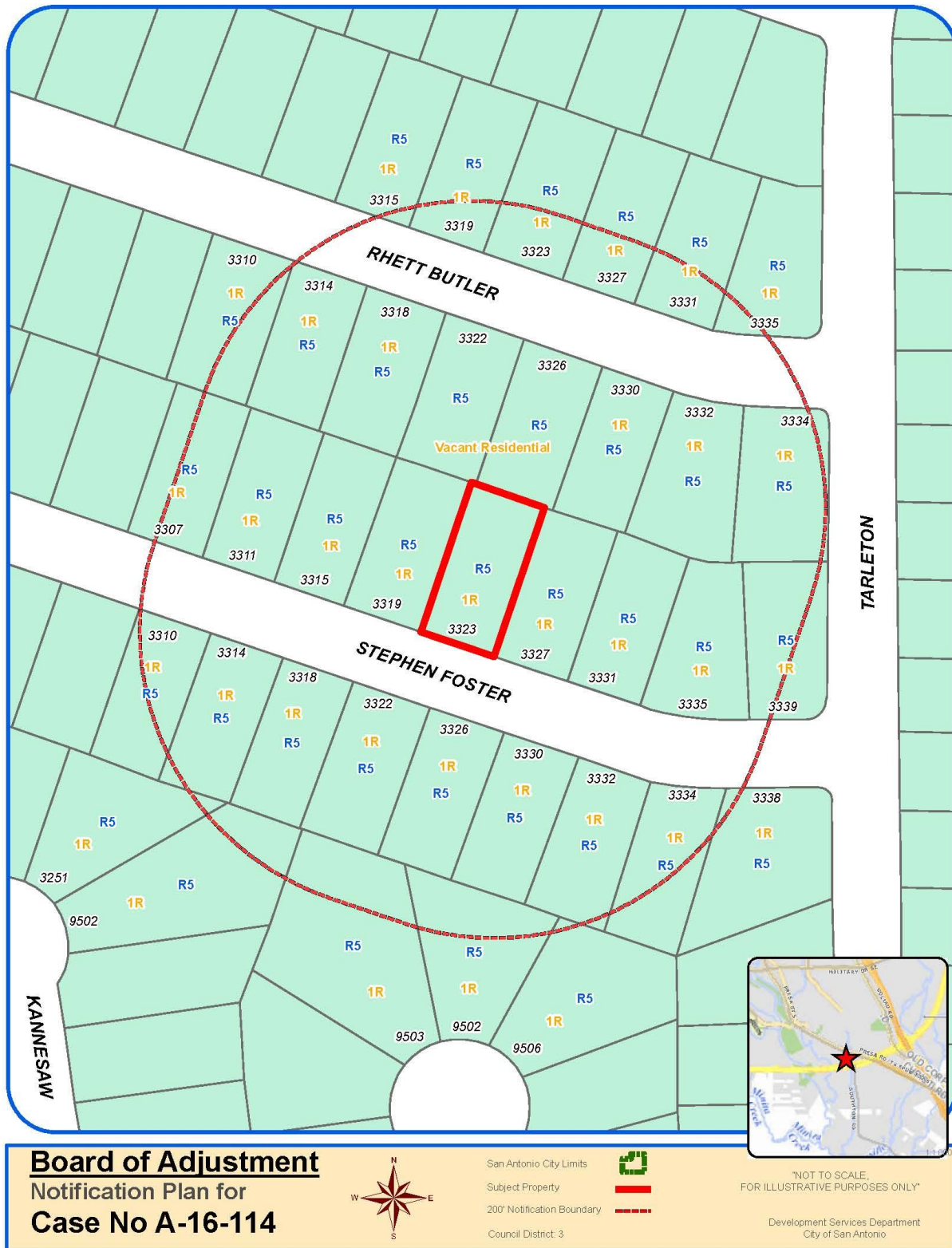


Attachment 1 Notification Plan






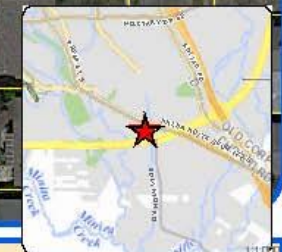
Attachment 1 Notification Plan (continued)



Board of Adjustment Notification Plan for Case No A-16-114



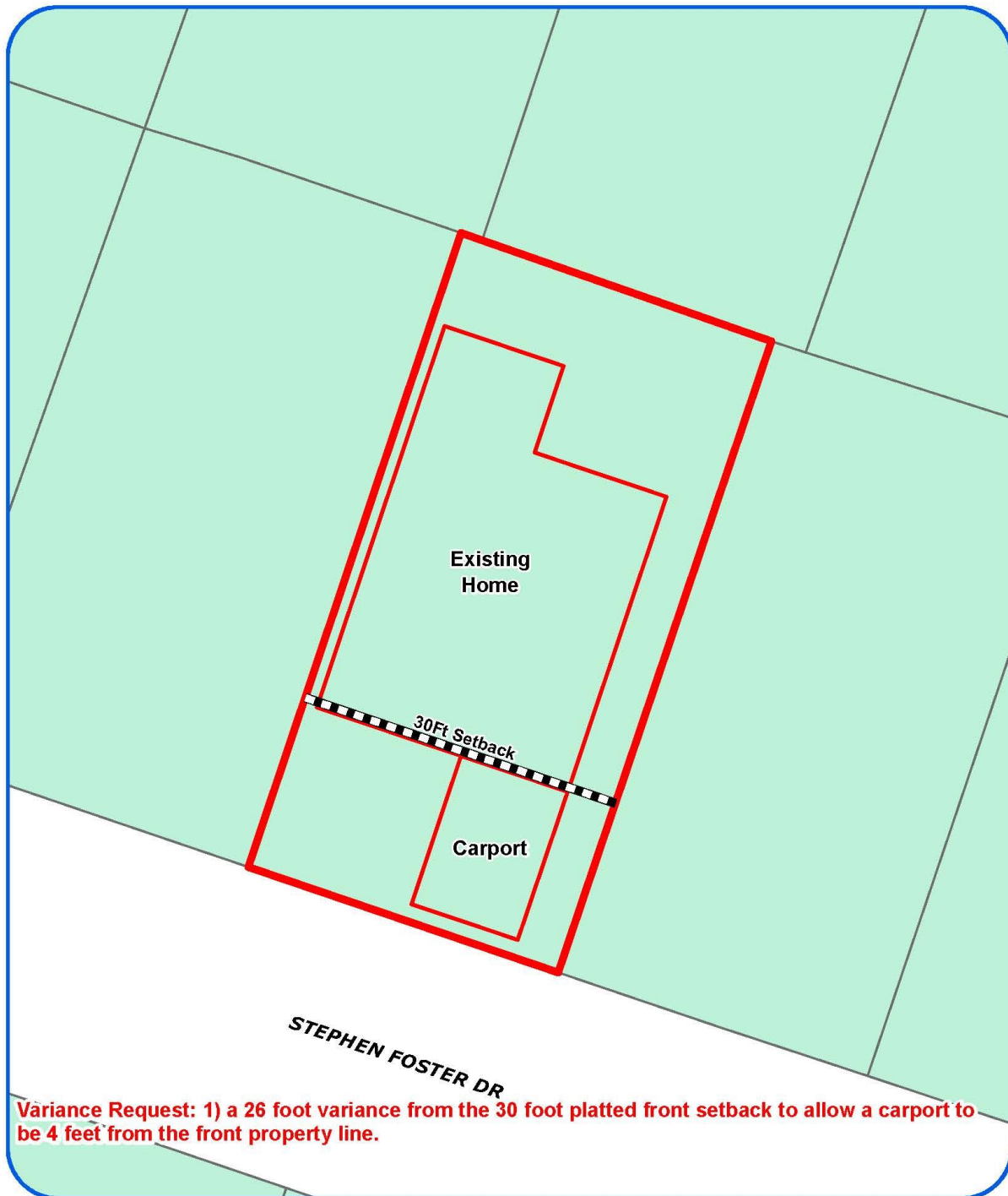
San Antonio City Limits 
 Subject Property 
 200' Notification Boundary 
 Council District: 3



*NOT TO SCALE,
 FOR ILLUSTRATIVE PURPOSES ONLY*

Debra Kopmeier, Senior Department
 City of San Antonio

**Attachment 2
Plot Plan**



Board of Adjustment
Plot Plan for
Case No A-16-114



"NOT TO SCALE,
FOR ILLUSTRATIVE PURPOSES ONLY"
Council District: 3

3323 Stephen Foster

Development Services Department
City of San Antonio

Attachment 2
Plot Plan (continued)



Board of Adjustment
Plot Plan for
Case No A-16-114

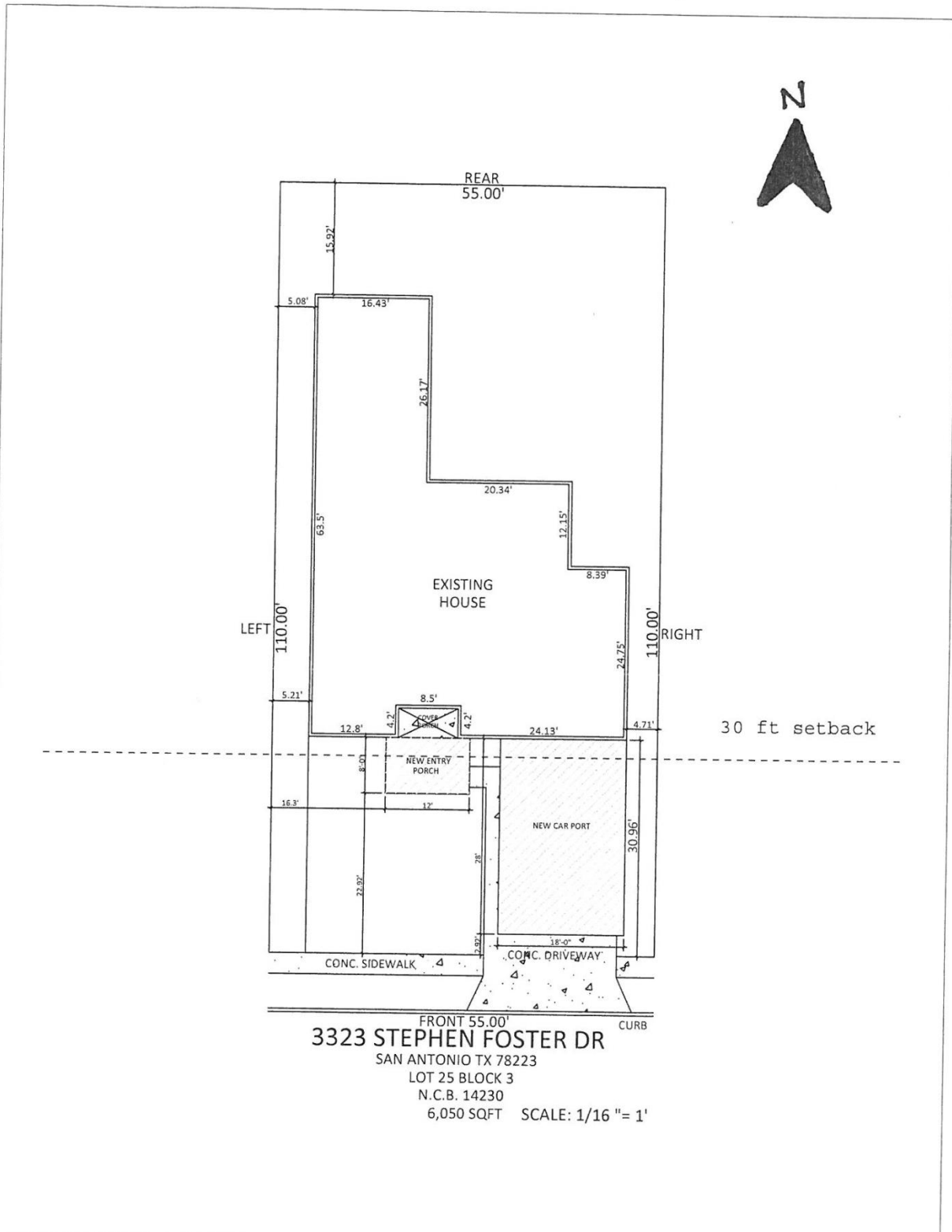


"NOT TO SCALE,
FOR ILLUSTRATIVE PURPOSES ONLY"
Council District: 3

3323 Stephen Foster

Designated by the Planning Department
City of San Antonio

Attachment 3
Applicant's Site Plan



Attachment 4 – Photos
Subject Property – 3323 Stephen Foster Drive



Carport



Neighbor's Carport



Carports common on Stephen Foster Drive



Carports common on Stephen Foster Drive



Carports common on Stephen Foster Drive



