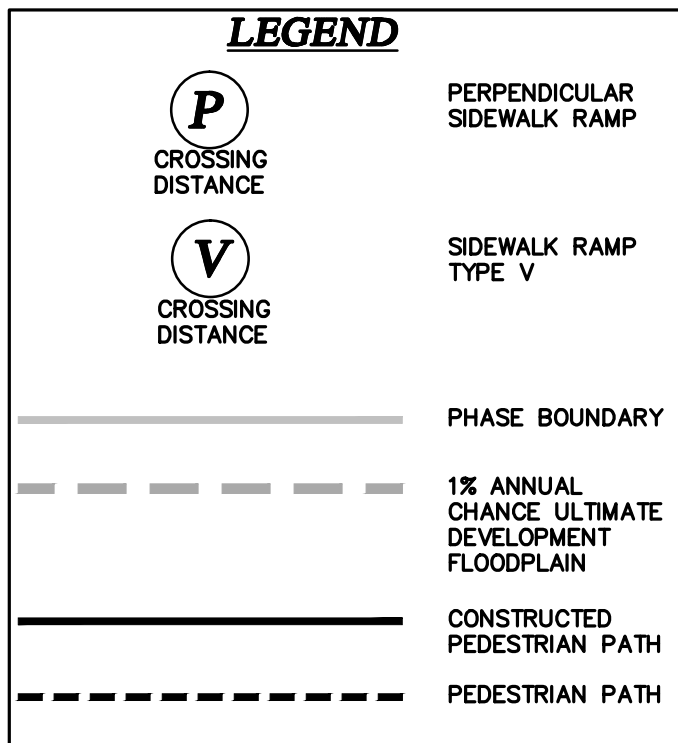


- GENERAL NOTES:**
- EXACT ALIGNMENT OF ROADS AND BOTH CONFIGURATION AND LOCATION OF FUTURE LOTS IS SUBJECT TO CHANGE.
 - PEDESTRIAN PATH ALIGNMENTS ARE CONCEPTUAL. ACTUAL ALIGNMENTS WILL BE FIELD LOCATED DURING CONSTRUCTION BASED ON TREES, GROUND SLOPE AND OTHER NATURAL CONDITIONS.
 - PROPOSED PEDESTRIAN PLAN WILL ADHERE TO APPLICABLE SECTIONS OF THE UNIFIED DEVELOPMENT CODE PERTAINING TO GEOMETRY AND ACCESSIBILITY REQUIREMENTS.
 - CAMPANAS WILL BE A GATED ENCLAVE SUBDIVISION WITH PRIVATE STREETS AND PEDESTRIAN PATHWAYS. CONNECTION POINTS FOR PEDESTRIAN PATHWAYS TO PUBLIC RIGHT-OF-WAY ARE SHOWN ON PLAN.
 - ALL STREETS INSIDE THE SUBDIVISION ARE LOCAL TYPE A STREETS.
 - THE SUBDIVISION IS PART OF THE CIBOLO CANYONS MASTER DEVELOPMENT PLAN (MDP #13-00024)

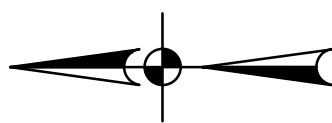
- SURVEYOR'S NOTES:**
- COORDINATES SHOWN ARE BASED ON THE NORTH AMERICAN DATUM OF 1983 (CORS 1996) FROM THE TEXAS COORDINATE SYSTEM ESTABLISHED FOR THE SOUTH CENTRAL ZONE. DISPLAYED IN GRID VALUES DERIVED FROM THE NGS COOPERATIVE CORRS NETWORK.
 - DIMENSIONS SHOWN ARE SURFACE.
 - BEARINGS ARE BASED ON THE NORTH AMERICAN DATUM OF 1983 (CORS 1996), FROM THE TEXAS COORDINATE SYSTEM ESTABLISHED FOR THE SOUTH CENTRAL ZONE.



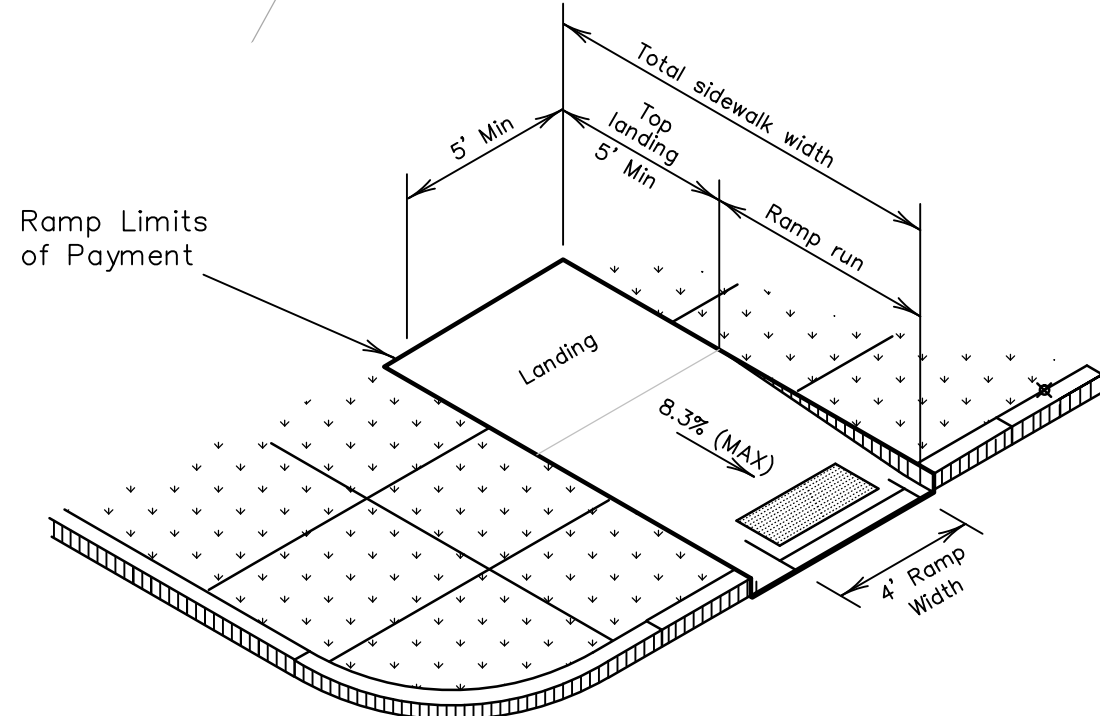
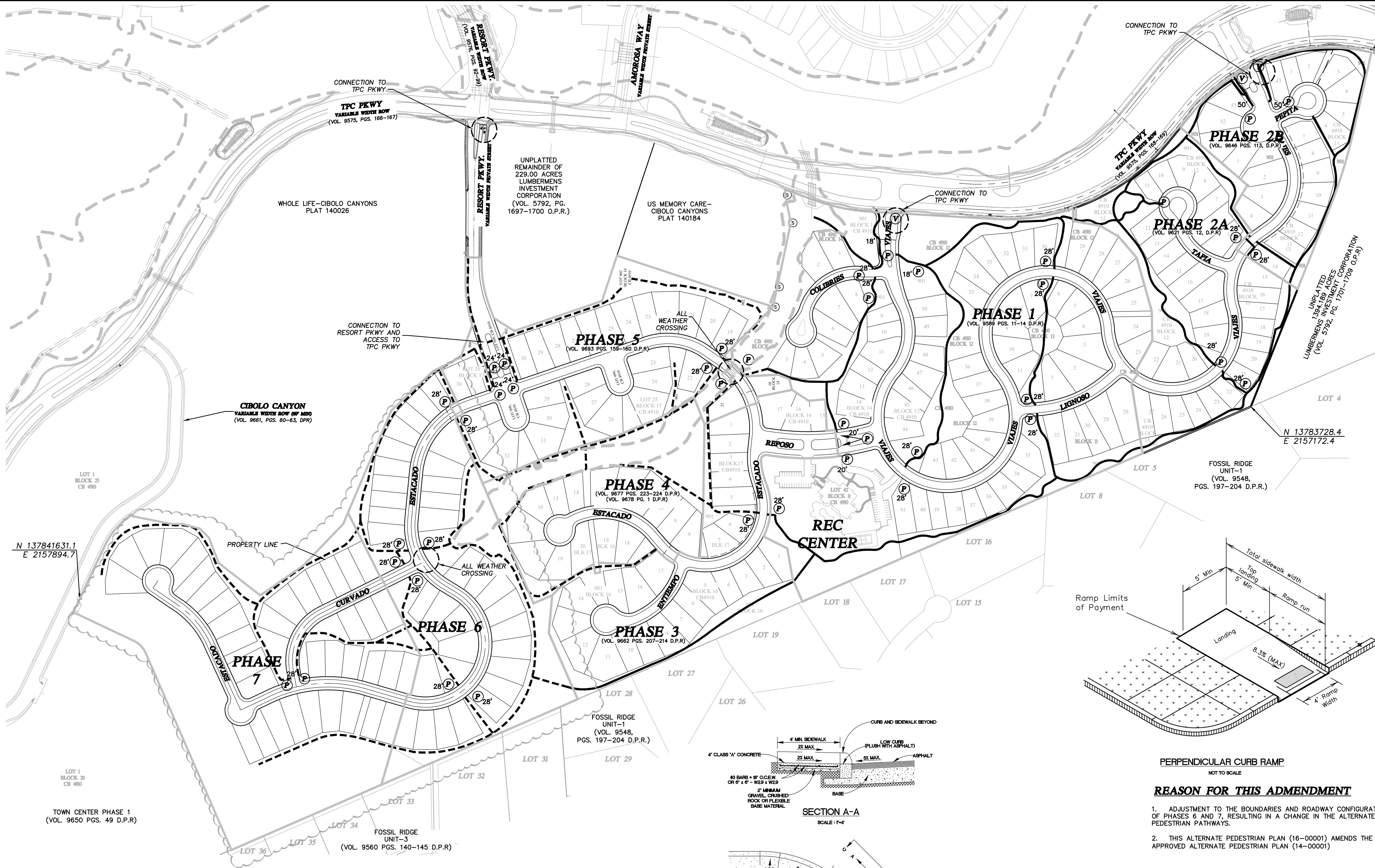
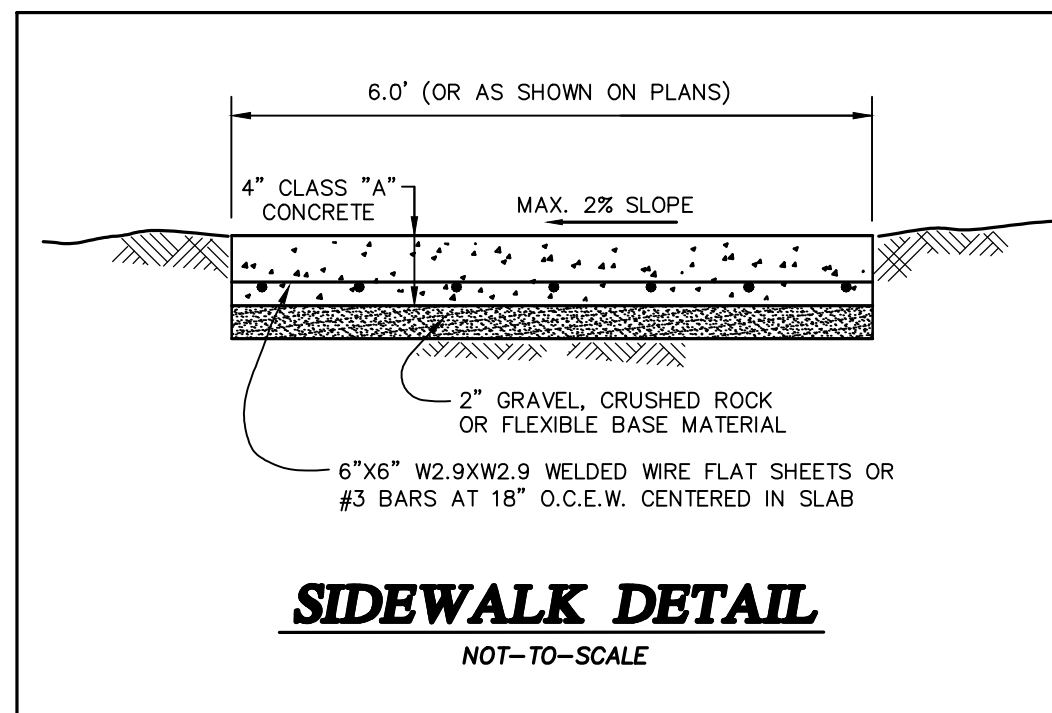
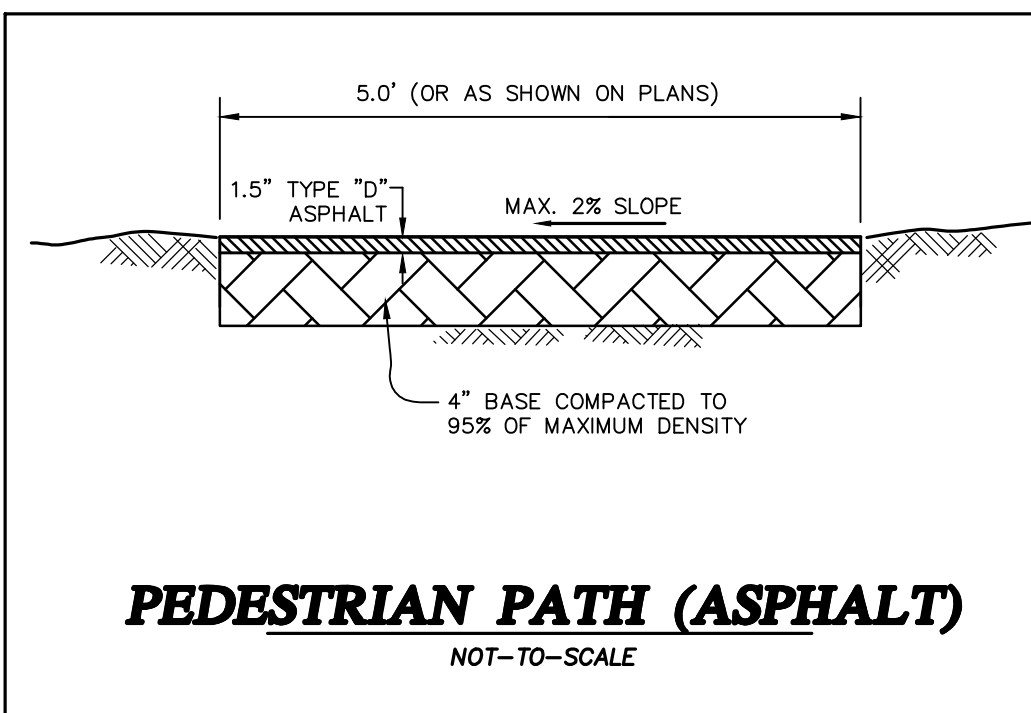
ESTIMATED COMPLETION DATE (TIMING TO BE BASED ON MARKET CONDITIONS)		
PHASE	DATE	LENGTH
1	NOV 2008	5,735 LF
2A	NOV 2011	3,154 LF
2B	APR 2013	2,301 LF
3	MAY 2014	2,160 LF
4	NOV 2014	888 LF
5	MAY 2015	2,379 LF
6	JAN 2017	3,795 LF
7	JUL 2017	2,958 LF

ALTERNATE PEDESTRIAN PLAN HISTORY	
PLAN #	APPROVAL DATE
1	APRIL 2008
2	OCT 2014
3	
4	
5	

OWNER/DEVELOPER:
FORESTAR (USA) REAL ESTATE GROUP
6300 BEE CAVE ROAD,
BUILDING TWO, SUITE. 500
AUSTIN, TEXAS 78746
PHONE: 512-433-5200



SCALE: 1" = 200'
0' 200' 400' 600'



PERPENDICULAR CURB RAMP
NOT TO SCALE

REASON FOR THIS ADMENDMENT

- ADJUSTMENT TO THE BOUNDARIES AND ROADWAY CONFIGURATION OF PHASES 6 AND 7, RESULTING IN A CHANGE IN THE ALTERNATE PEDESTRIAN PATHWAYS.
- THIS ALTERNATE PEDESTRIAN PLAN (16-00001) AMENDS THE APPROVED ALTERNATE PEDESTRIAN PLAN (14-00001)

***NOTE:**
IN ACCORDANCE WITH SECTION 35-414 (b)(2)(C) OF THE CITY OF SAN ANTONIO'S UNIFIED DEVELOPMENT CODE; SIDEWALKS WILL NOT BE CONSTRUCTED ADJACENT TO THE CURB OF PRIVATE STREETS UNLESS OTHERWISE SHOWN ON THIS ALTERNATE PEDESTRIAN PLAN (16-00001).

THE FLOODPLAIN LIMITS ON THIS PEDESTRIAN PLAN ARE ESTIMATED AND SUBJECT TO CHANGE. APPROVAL OF SUBDIVISION PLATS ASSOCIATED WITH THIS PEDESTRIAN PLAN IS SUBJECT TO THE REVIEW AND APPROVAL OF A STORM WATER MANAGEMENT PLAN IN ACCORDANCE WITH APPENDIX B, SECTION 35-B119 OF THE CITY OF SAN ANTONIO UNIFIED DEVELOPMENT CODE.

OWNER _____ ENGINEER _____

THIS ALTERNATE PEDESTRIAN PLAN FOR CAMPANAS ENCLAVE HAS BEEN SUBMITTED TO AND CONSIDERED BY THE PLANNING COMMISSION OF THE CITY OF SAN ANTONIO, TEXAS AND IS HEREBY APPROVED BY SUCH COMMISSION.

DATED THIS _____ DAY OF _____ A.D., 20 _____

BY: _____ (CHAIRMAN)

BY: _____ (SECRETARY)

NO.	REVISION	DATE

PAPE-DAWSON ENGINEERS
SAN ANTONIO | AUSTIN | HOUSTON | FORT WORTH | DALLAS
2000 HW LOOP 410 | SAN ANTONIO, TX 78213 | 210.375.9000
TYPE FIRM REGISTRATION #1006860

CAMPANAS (ENCLAVE)
SAN ANTONIO, TEXAS
ALTERNATE PEDESTRIAN PLAN
(APP 16-00001)

PLAT NO.	JOB NO.	DATE	DESIGNER	CHECKED	DRAWN	EP
	3538-70	APRIL 2016	CC	JD		
SHEET 1 OF 1						