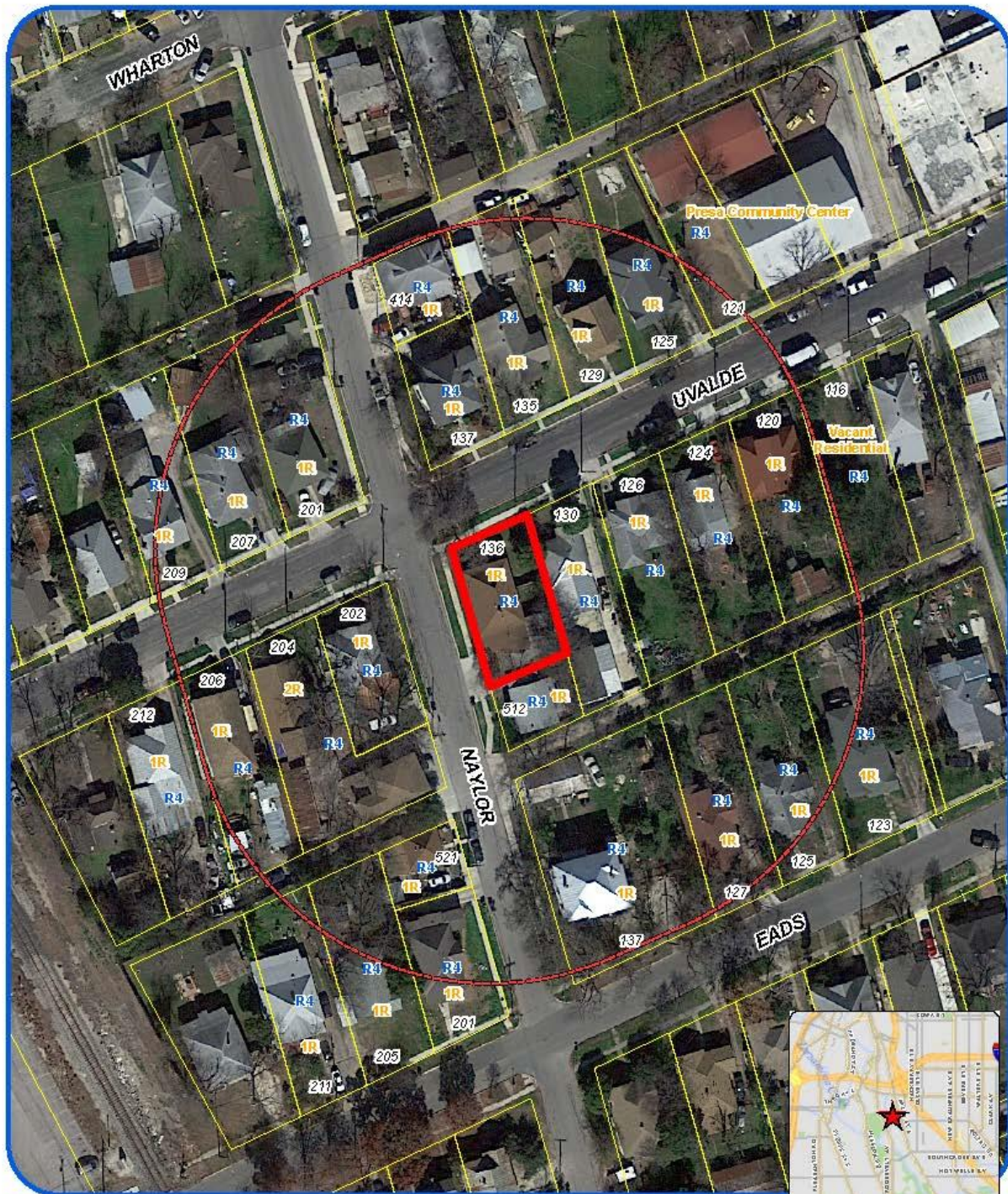


Attachment 1 Notification Plan (continued)



Board of Adjustment Notification Plan for Case No A-16-142



San Antonio City Limits
Subject Property
200' Notification Boundary
Council District: 3



"NOT TO SCALE,
FOR ILLUSTRATIVE PURPOSES ONLY"

Deane Kopmeier Services Department
City of San Antonio

Attachment 2
Plot Plan



Board of Adjustment
Plot Plan for
Case No A-16-142



"NOT TO SCALE,
FOR ILLUSTRATIVE PURPOSES ONLY"
Council District: 3

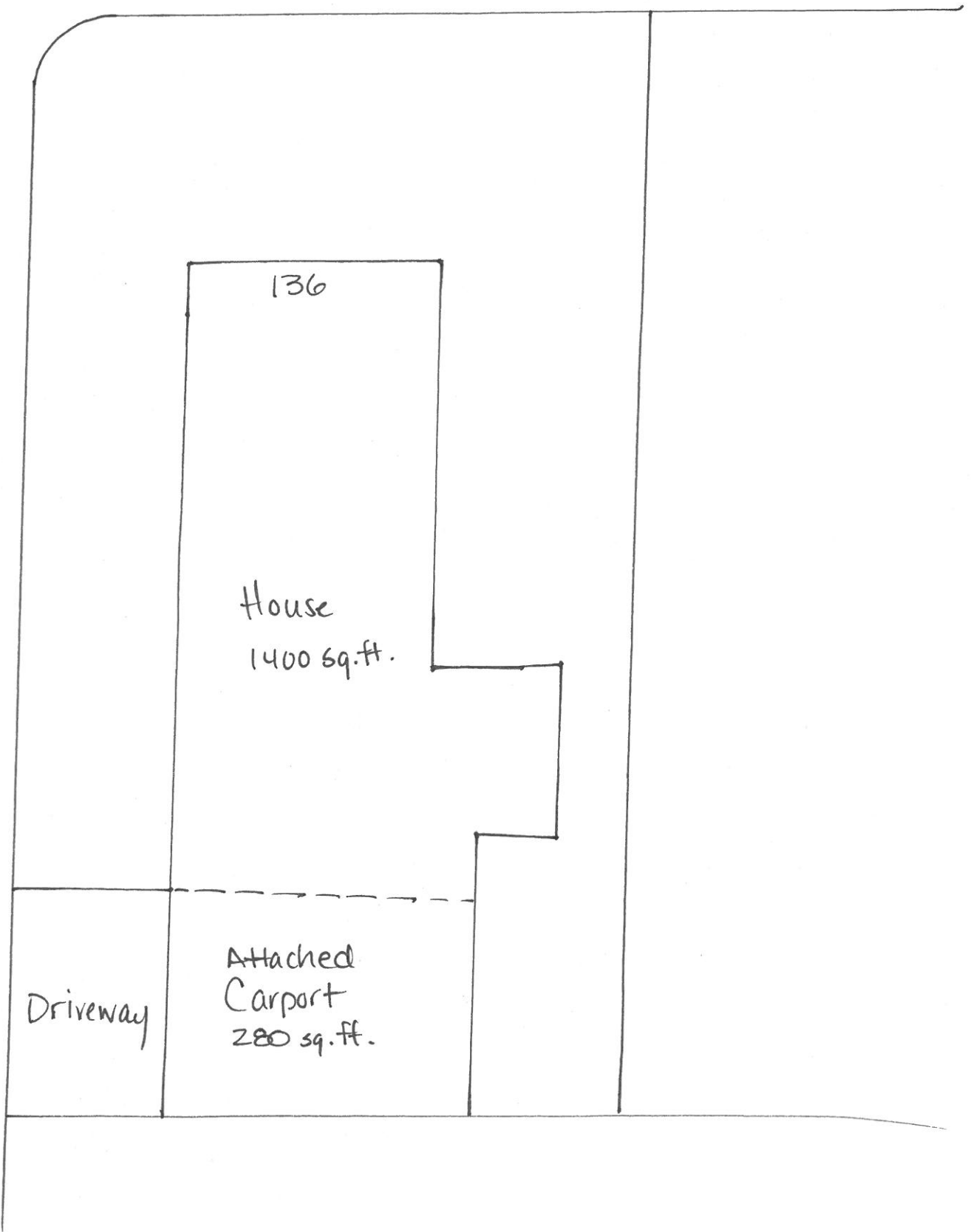
136 Uvalde St

Development Services Department
City of San Antonio

Site Plan

Uvalde

Naylor



Attachment 4 – Photos
Subject Property – 136 Uvalde



Carport in relation to adjacent property



Carport on rear property line



Uvalde streetscape

