

# **CITY OF KIRBY'S MUNICIPAL BOUNDARY ADJUSTMENT (MBA) AGREEMENT**

**City Council**

**October 6, 2016**

**Bridgett White, AICP, Director**



**Department of Planning & Community Development**

# Kirby MBA

- Kirby requested release of approx. 93.1 acres from San Antonio
- State law allows adjacent municipalities to mutually agree to boundary changes less than 1,000 feet in width

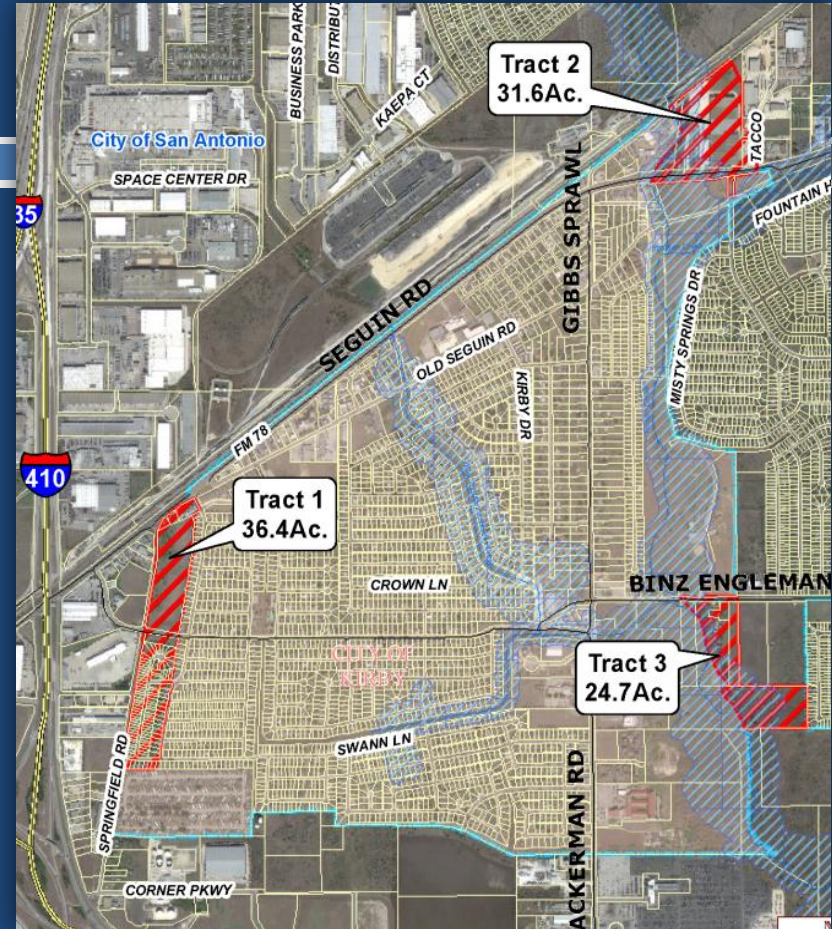


# Cont. Kirby MBA

## Kirby receives:

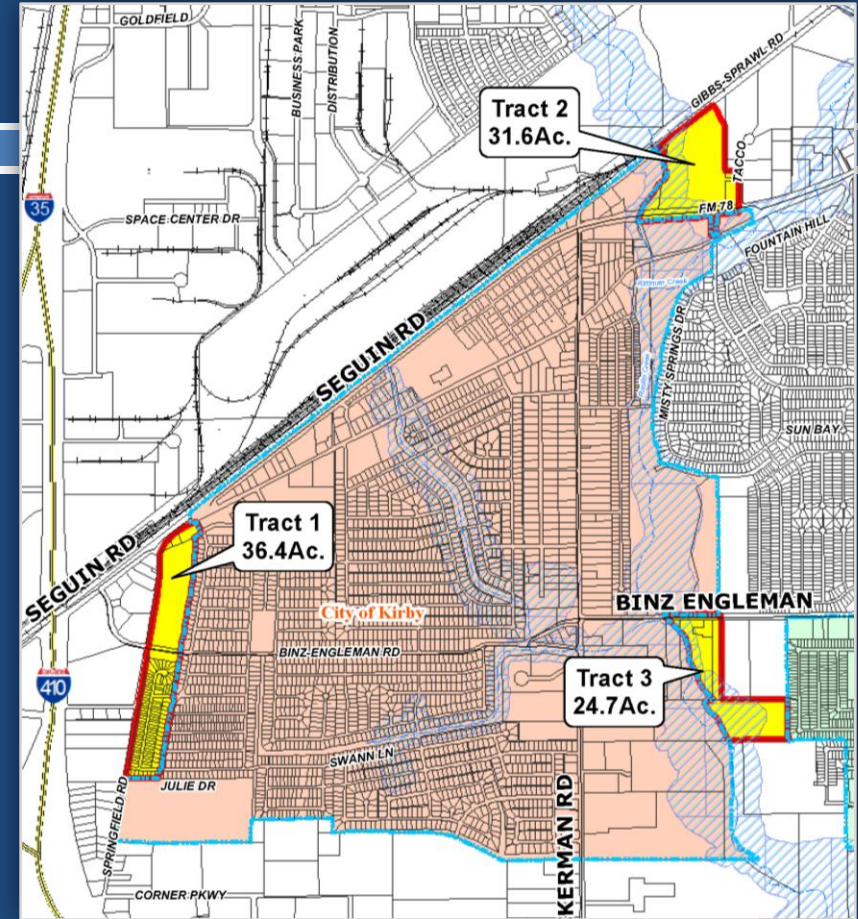
- Tract 1: 36.4 acres found along Springfield Rd
- Tract 2: 32.6 acres located between Seguin and Gibbs-Sprawl Roads
- Tract 3: 24.1 acres situated east of Ackerman Rd
- Road ownership and maintenance

**San Antonio receives:** Revenue sharing from Kirby



# Analysis of MBA

- Logical Planning Boundaries
- Uniform regulations and service delivery
- Inter-governmental Cooperation:
  - Support economic health and growth of regional partners
  - Redevelopment of Kirby's gateways





# Fiscal Impact of MBA

- Receive 50% of Kirby's taxes and fees of released property annually over next 15 years
- May receive a total of between \$396,118 (\$26,408 annually) to \$903,911 (\$60,266 annually) over 15 years



- Realize cost savings for road maintenance and other City services

# Staff Recommendation

- Staff recommends the Approval of Kirby Municipal Boundary Agreement
- Neighborhood and Livability recommended approval on September 19, 2016
- Planning Commission recommended approval on September 28, 2016