

City of San Antonio, Texas



# Southern Edwards Plateau Habitat Conservation Plan

Neighborhoods and Livability Committee

Roderick J. Sanchez, Director

Development Services Department

October 17, 2016

# Background

---

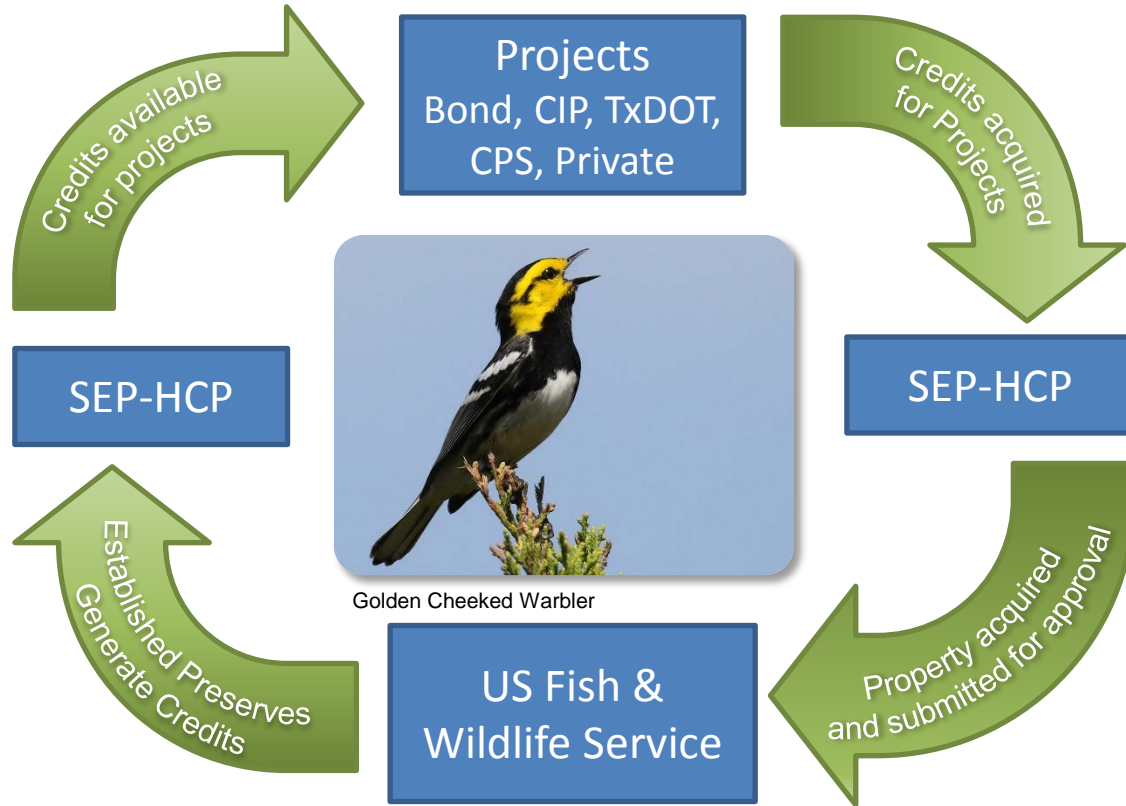
- 2005 - Defense Base Re-Alignment and Closure Commission
- 2008 - City Council approved several initiatives to support and protect Camp Bullis
- 2009 - Camp Bullis final Joint Land Use Study was accepted by City Council

# Background

---

- Military Notification Area –December 2008
- Military Lighting Overlay District – December 2008
- Habitat Compliance Ordinance – August 2009
- Environmentally Sensitive Area (ESA) ordinance – October 2009
- Strengthened Tree Ordinance – May 2010
- Military Sound Attenuation Overlay District – June 2010
- Regional Habitat Conservation Plan – **Implementation in discussion**

# Plan Process



# Creation of the Plan

- In November 2009 an Interlocal Agreement was executed to begin the process of creating a Habitat Conservation Plan.
- Goals:
  - Will assist with the compliance of the Endangered Species Act and;
  - Promote regional conservation;
  - Provide support to Camp Bullis;
  - Streamline endangered species permitting.



Rhadine Infealis

# Creation of the Plan

---

In December 2009, the creation of the Southern Edwards Plateau – Habitat Conservation Plan (SEP-HCP) was led by Bexar County

- Creation of a Citizens Advisory Committee and a Biological Advisory Team
  - Comprised of land owners, developers, government agencies, conservationists and biologists
- Goal to ensure that the plan met the needs of the local community and regulatory requirements
- Plan was released in 2011 and again in 2015 to seek input from the advisory committees, agencies and the general public.

# SEP-HCP and Permit

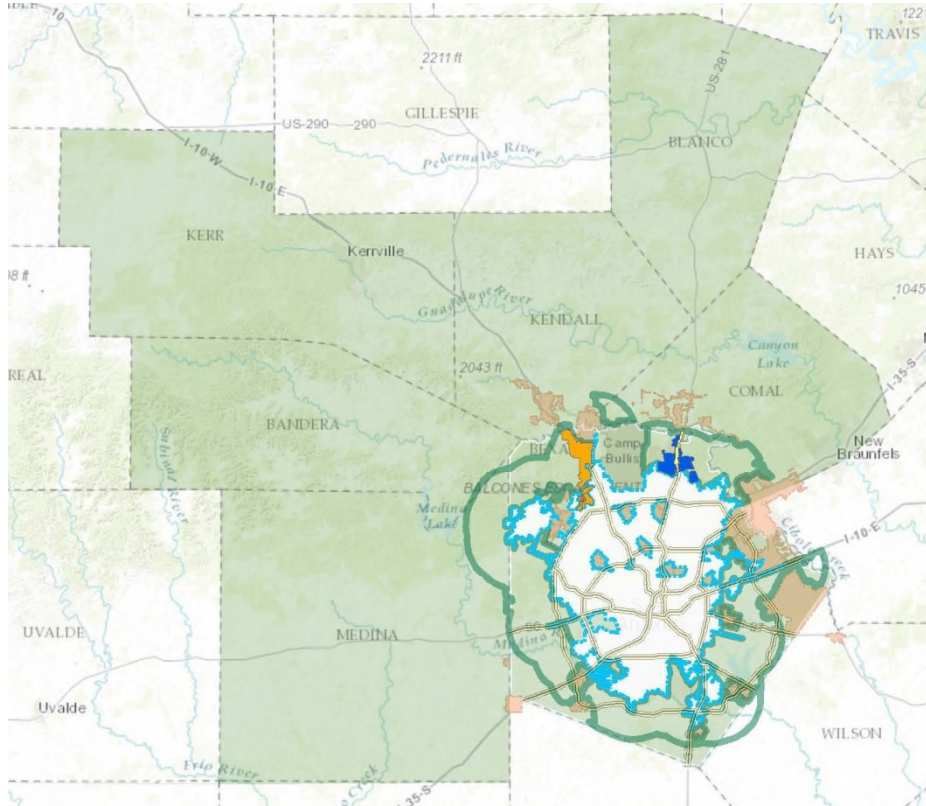
- December 2015 - The habitat conservation plan was approved by U.S. Fish and Wildlife Service
- January 2016 - A Joint 30-year Incidental Take Permit (ITP) was issued and authorizes a limited amount of “incidental take” of federally listed endangered species within the City of San Antonio and Bexar County.



Bracken Batcave Meshweaver



# SEP-HCP Area



Habitat Plan Area includes Preservation in 7 Counties:

- Bexar
- Kerr
- Bandera
- Medina
- Kendall
- Comal
- Blanco



# Policy Discussion

---

## 1. Should City participate in the plan management?

- An organizational structure must be created to decide which projects and preserved land to be included in the plan.

## Recommendations:

- The City and County should equally participate in the management of the plan.
- Subject matter experts should serve as advisors to a management committee.

# Policy Discussion

---

## 2. Should City participate in funding the plan?

- Funding will be needed for land management and monitoring of preserve land.

### Recommendations:

- City and County should participate in funding of the plan.
- Projects using the plan should be charged a maintenance fee.
- Fund and hire a 3rd party for the daily management of the land preserved.

# Policy Discussion

---

## 3. Should City property be used as preserves for the plan?

- Proposition 1 and 3 land and other City Property and open space are eligible to participate in the plan as preserve land.

### Recommendations:

- Do not use existing land acquired through the Prop 1 and 3 processes.
- Use future land acquired through Prop 1 process.
- Use other City Property and Open Space land.

# Policy Discussion

---

## 4. Should plan support both Public and Private projects?

- Both Public and Private projects are eligible to participate in the plan.

## Recommendations:

- Plan should allow both private and public projects. The goal is to encourage compliance with the Act.
- Financially the more projects allowed will increase funding for the plan.

# Policy Discussion

---

5. Should credits from City property be used for both Public and Private projects?

- City property is eligible to be used to support both Public and Private projects.

Recommendations:

- Only use City credits for Public projects with a priority to City projects.

# Policy Discussion

---

## 6. Should plan exclude projects over the Recharge and Contributing Zones?

- Projects over the zones are eligible to use the plan.
- SA Tomorrow encourages land intensive development patterns to locate outside of the recharge and contributing zones.

### Recommendations:

- Plan should not exclude projects over the zones. Projects in these zones should contribute at a higher rate to the plan.
- These projects will take place regardless of the plan and the plan will encourage compliance with the Act.

# Policy Discussion

---

## 7. Should plan limit preserves to Bexar County?

- Permit is issued to allow preserves in Bexar County and surrounding 6 Counties.
- Camp Bullis recommends preserving land near the base.

### Recommendations:

- Plan should set as a goal a minimum of 30% of Golden Cheeked Warbler Habitat to be preserved within Bexar County or 5 miles from Camp Bullis.
- Karst Preserves are only found in Bexar County.



# Potential Next Steps

---

- B Session – November 16, 2016
- Negotiate Interlocal Agreement (ILA) with Bexar County to include direction received from Council.
- City Council consider ILA
  - Appoint Coordinating Committee Members
  - Establish long term funding for the plan

City of San Antonio, Texas



# Southern Edwards Plateau Habitat Conservation Plan

Neighborhoods and Livability Committee

Roderick J. Sanchez, Director

Development Services Department

October 17, 2016