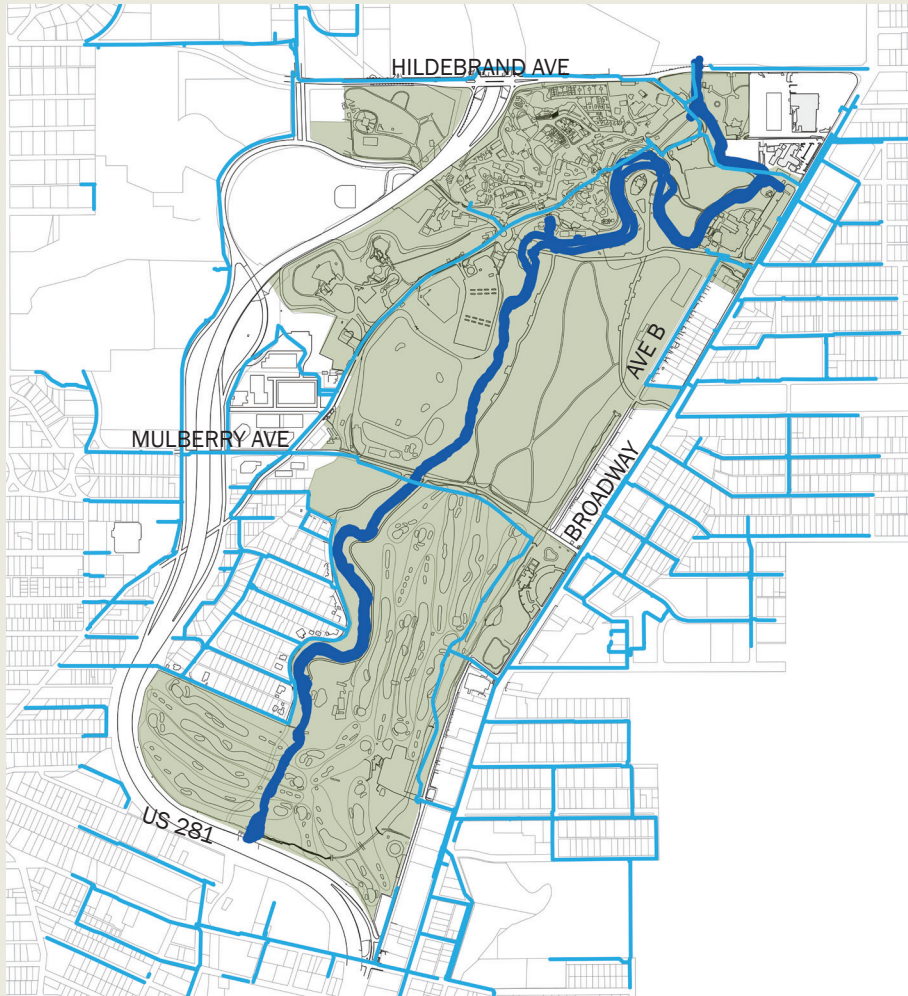


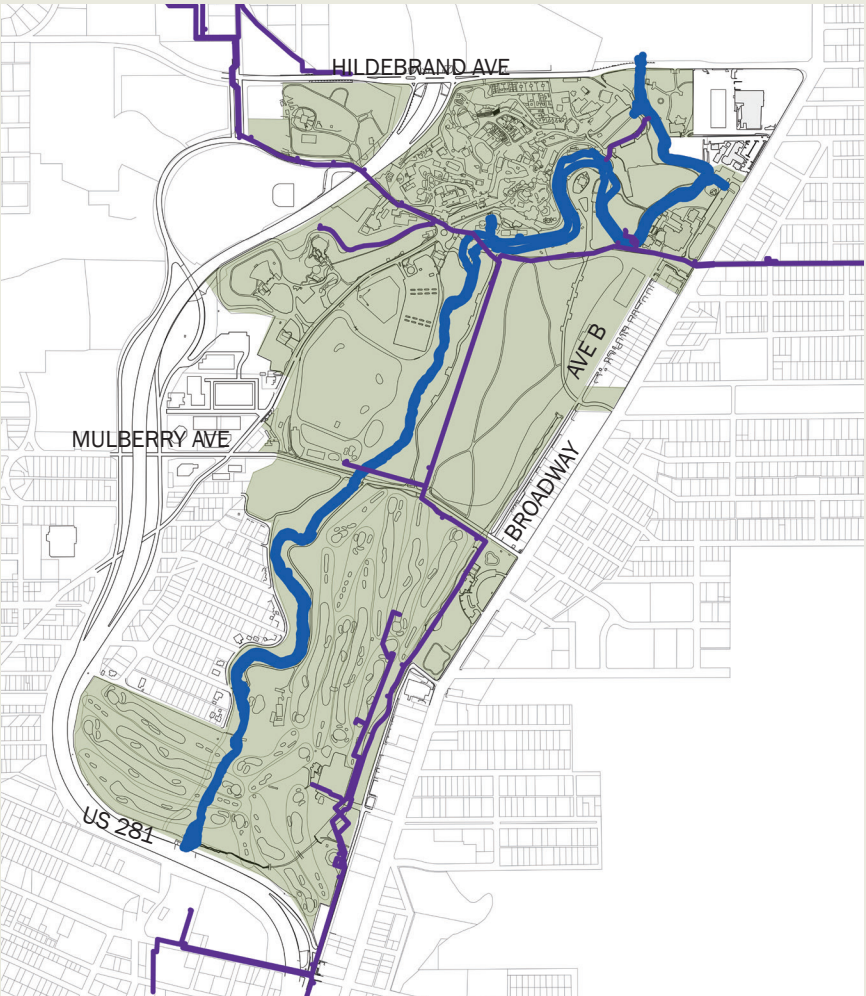
VI
OTHER SYSTEMS
BRACKENRIDGE PARK
MASTER PLAN

WATER, WASTEWATER & DRAINAGE

SAWS Potable Water Supply



SAWS Recycled Water Supply



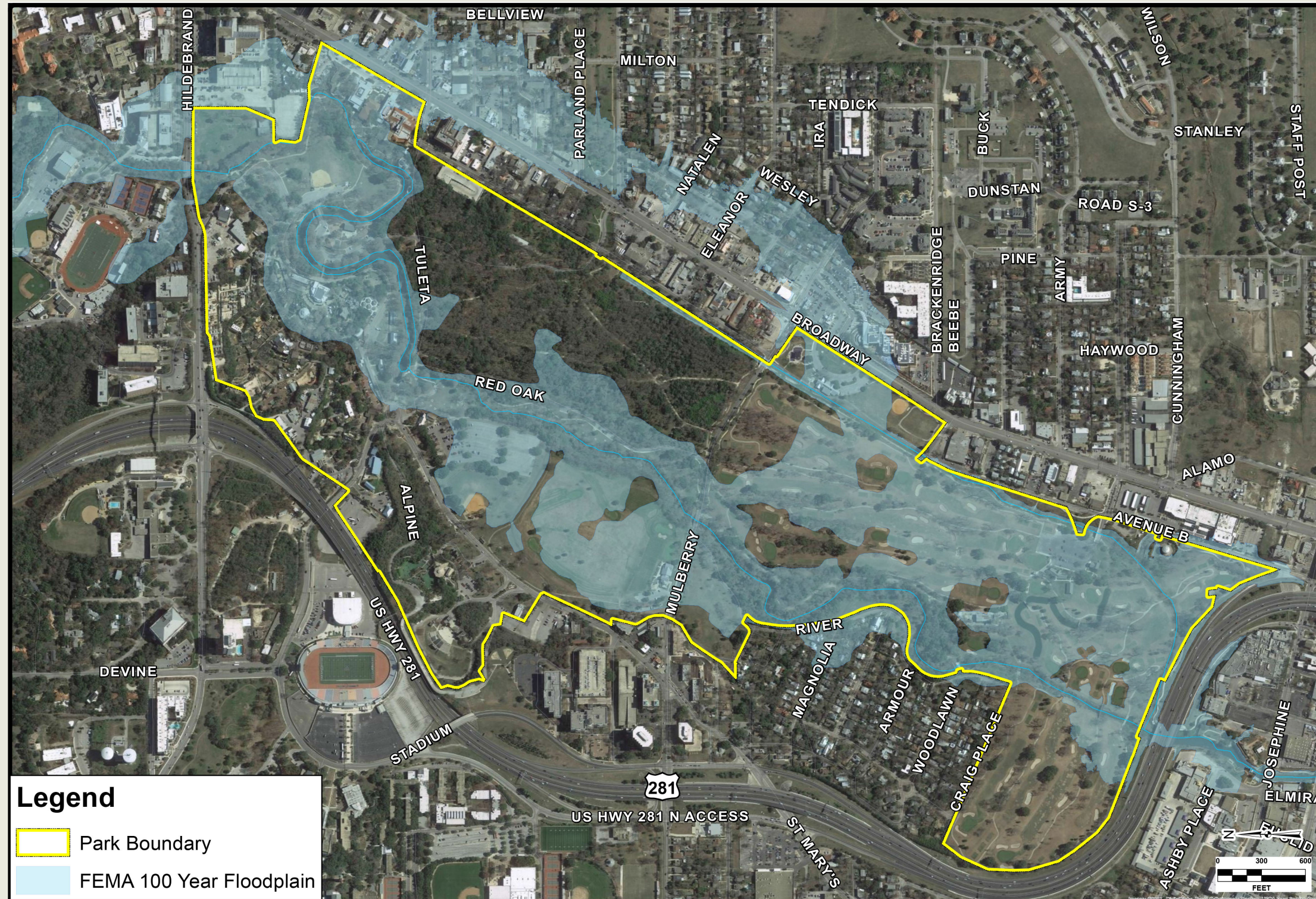
SAWS Sewer Network



VI OTHER SYSTEMS

BRACKENRIDGE PARK

MASTER PLAN



VI
OTHER SYSTEMS
BRACKENRIDGE PARK
MASTER PLAN



VI OTHER SYSTEMS

BRACKENRIDGE PARK

MASTER PLAN

ELECTRICAL & MECHANICAL

The majority of the electric service equipment to park structures is old and non-compliant with present electric service standards. While the equipment is serviceable in the near term, its size, location, and configuration may not be suitable for any planned reuse. Therefore, we recommend to plan for new electrical distribution equipment at strategic locations as park improvement projects are phased in.

A CPS Energy underground primary circuit extending along North St. Mary's Street currently serves pad mounted transformers at several locations that serve Brackenridge Park buildings and San Antonio Zoo. Services from this electrical circuit include the Sunken Garden Theater, Japanese Tea Gardens, Jingu House, Tony Martinez Field, and Zoo parking lot lighting.

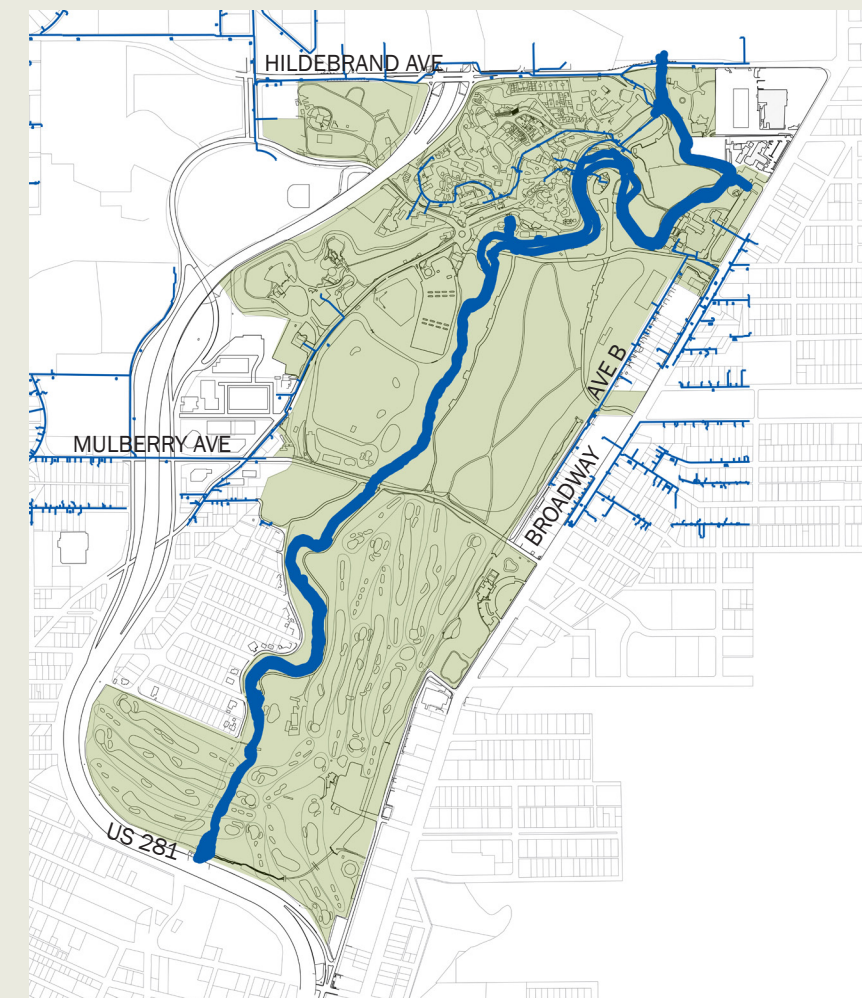
A CPS Energy overhead primary circuit extending from East Hildebrand Avenue south on Brackenridge Drive currently serves electrical service meters feeding through pole mounted service transformers within the northeast area of the park. Services from this electrical circuit include Lambert Beach Field, Joske Pavilion Trail facilities, Upper Pump House, and the Brackenridge Park Parking Garage.

A thorough evaluation of electrical service requirements should be commissioned as part of the programming phase for park improvements. As facility programming is developed, it will be possible to plan infrastructure improvements that coordinate with future requirements. The resulting evaluation should result in a framework or guide that may be used in planning phased improvements of electrical distribution. The design team's electrical engineer of the park improvements will need to coordinate this work closely with CPS Energy to establish new points of electric service to match program needs.

CPS Energy Electrical Network

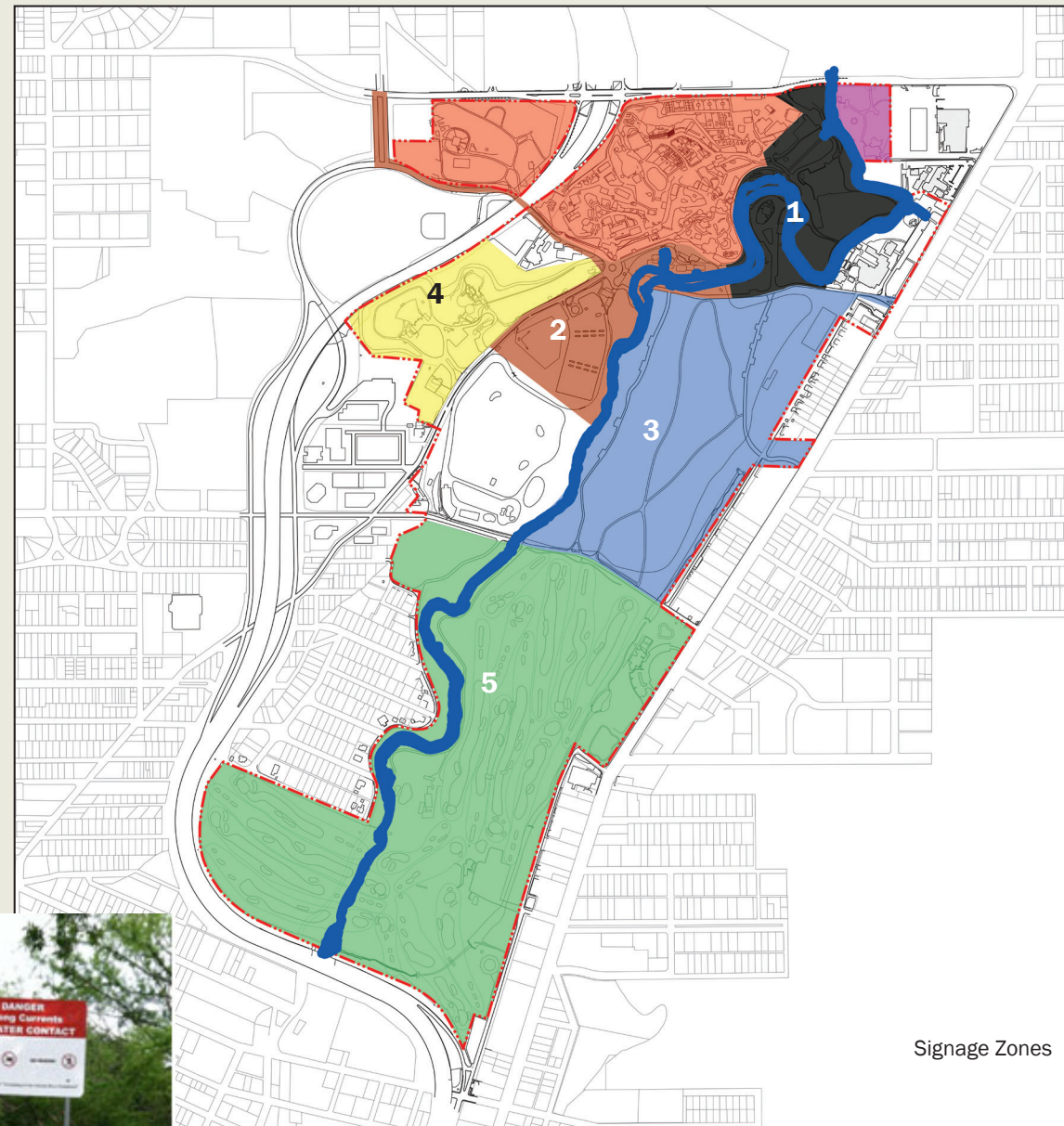
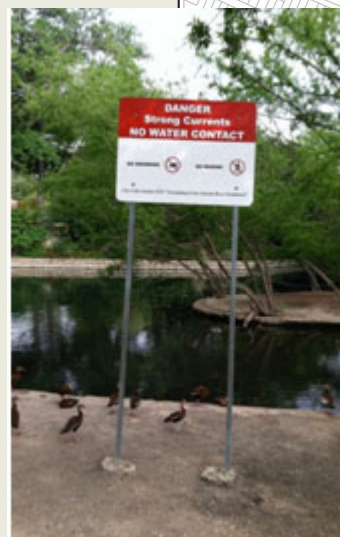


CPS Energy Gas Network



VI OTHER SYSTEMS BRACKENRIDGE PARK MASTER PLAN

EXAMPLES OF REPLACED SIGNAGE



GRAPHICS & WAYFINDING FOR BRACKENRIDGE PARK

During the past 4 years, the existing directional and informational signage throughout Brackenridge Park has been replaced with a new comprehensive wayfinding system. The program was designed to direct and orient visitors, identify trails and amenities, provide information, and inform visitors about the history, geography, archeology, hydrology and early settlements in the area. The majority of the old signage has been replaced; but with ongoing modifications to the trails, pathways, streets, parking and green spaces, signage will need to be added to the system.

New signage will continue to build upon the current aesthetic and will function similarly. Maps will need to be updated to reflect the changes to the park, and messages on the signs will need to be revised to reflect new destinations, pathways, BCycle locations, parking areas, amenities, green spaces and connections to trails and roads.

The system currently includes the following sign types:

- trailhead pylons with orientation maps
- vehicular and pedestrian directional signs
- orientation map units
- interpretive graphics
- regulatory signs
- amenity identity signs

(See photos)

Additional Opportunities

Area 1: North End History & Walking Area

- Add an interpretive feature or exhibit that highlights the Prehistoric Archaeological sites, Spanish Colonial Dams & Acequias, Upper Labor, Miraflores, Pump House, Lambert Beach, Waterworks, Donkey Barn and Rodriguez bridge. Many of these currently have their own interpretive panels, but it would be very informative to

VI OTHER SYSTEMS

BRACKENRIDGE PARK

MASTER PLAN

bring these topics and histories together in one location, possibly near the Donkey Barn.

- Provide informational, identity, regulatory signage for planned amenities, changing rooms, restrooms, water activities, etc.
- Add directionals from the planned joint-use parking garage to the Miraflores Bridge, to park paths, and to the Blue Hole path under Hildebrand.
- Update park maps to include new BCycle stations.
- Consider incorporating Donor Recognition into surfaces of the proposed amphitheater.

Area 2: Heart Of The Park

- Provide map units and directional signs from proposed parking areas at the Tuleta/Stadium Drive entrance to the Park & Zoo.
- Add vehicular directional signs to guide buses to drop-off points and to direct vehicles to parking lots & garages.
- Provide vehicular & pedestrian directionals to the Japanese Tea Garden & Sunken Garden Theater.

Area 3: Wilderness Area

- Engage visitors along the wilderness trails by adding nature-related markers, i.e., small interpretives or elements that bring attention to specific park features, vegetation, birds, insects and wildlife. These can be very discreet, but designed to encourage observation and connection to the environment.
- Provide Trailhead units at the proposed connections at the Broadway to Catalpa-Pershing trail links.
- Provide vehicular/pedestrian directionals and interpretives along the proposed multi-use trail parallel to the Avenue B park road.

Area 4: Sunken Garden Theater & Japanese Tea Garden

- Provide vehicular directionals to direct traffic to parking lots, VIP parking and parking structures; and pedestrian directional/map units to direct visitors to various



Park map

VI OTHER SYSTEMS

BRACKENRIDGE PARK

MASTER PLAN

NEW SIGNAGE



Facility and amenity identity sign



Directional at parking area



Trailhead pylon



Regulatory/information sign



Interpretive unit



Interpretive unit



Interpretive unit

venues.

- Provide Donor Recognition opportunities to support improvements to the Sunken Garden Theater and Tea Garden.
- Incorporate changeable banners or large “poster” structures at key locations on St. Mary’s or in parking areas to promote events at the Theater, Tea Garden, and Great Lawn.

Area 5: Golf Course & Southern Areas

- Provide additional signage, as noted above, along the improved Avenue B road and along multi-use trails.
- Update maps to show connections, parking, BCycle stations and Tram-circulator routes to the DoSeum.
- Provide pedestrian maps or small directionals at the proposed Avenue A multi-use trail, as well as other regulatory/information at the low-water connection to the adjacent River Road neighborhood.
- Existing signage already exists that connects the southern pathways around the golf course, under US-281 to the Tunnel Inlet Park and the Museum Reach.

Opportunities for Donor Recognition signage should also be incorporated into the landscape plans, especially in the larger public venues.

Signage should also be developed to include some of the miscellaneous regulatory signs throughout the park. Many of these were not included in the updated signage system, and it would help expand visual consistency throughout the

VI OTHER SYSTEMS

BRACKENRIDGE PARK

MASTER PLAN

NEW SIGNAGE

park.

In addition to these signage improvements, digital apps for informative and educational purposes might be developed as a means of reaching a wide range of audiences, literacy levels, and non-English speakers. According to the Pew Research Center, nearly two-thirds of adult Americans own a smartphone of some type, while nearly 85% of younger Americans ages 18 – 29 use smartphones. Access to events information, parking, BCycle rentals, history and archaeology, hydrology, seasonal and cultural highlights, etc. could be developed on the Park website and accessed through QR codes on maps or on select signage. This is an inexpensive and universal means of providing content and changeable information, as well as audio information for limited-sight visitors. Digital message boards could be used at key roadway intersections during big events to help direct traffic to parking, or to guide visitors to particular venues.

Signage will need to be maintained and maps will need to be updated over time, so it is important that budgets are created for this, and that records of sign locations and messages are updated in order to promote a safe and enjoyable visitor experience. By building upon the existing signage program, the goal is to create a cohesive sense of Brackenridge's amenities, while reinforcing its extensive trails and connections to the greater surrounding area.



Large vehicular directional



Small vehicular directional



Pedestrian directional



Pedestrian site map