

HISTORIC AND DESIGN REVIEW COMMISSION

April 19, 2017

HDRC CASE NO: 2017-150
ADDRESS: 9900 ESPADA RD
10040 ESPADA RD
LEGAL DESCRIPTION: CB 4002-1 P-5
ZONING: NP-10, HS RIO-6, MPOD-4
CITY COUNCIL DIST.: 3
DISTRICT: Mission Historic District
LANDMARK: Mission Espada
APPLICANT: Stuart Johnson/San Antonio River Foundation
OWNER: San Antonio River Authority
TYPE OF WORK: Public Art Installation at Mission Espada Portal
REQUEST:

The applicant is requesting conceptual approval for approval to install a public art sculpture, Arbol de la Vida: Voces de Tierra. At the Mission Espada Portal located at 9900 and 10040 Espada Road.

APPLICABLE CITATIONS:

UDC Section Division 5. – Public Art San Antonio (PSAS)

The purpose of Public Art San Antonio (PASA) is to support a public process for incorporating artist services and artworks in the design of civic spaces and capital projects and to define the City of San Antonio's policies and guidelines for acquiring and commissioning art of the highest standards which shall enrich the quality of life for all residents and visitors of San Antonio.

The goals of Public Art San Antonio (PASA) are to create a better visual environment for the residents and visitors of San Antonio, to integrate the design work of artists into the development of city eligible capital improvement projects, and to promote tourism and the economic vitality of the city through the enhancement of public spaces. Public Art San Antonio (PASA) serves the entire City of San Antonio as the public art program for all city departments, capital projects and public art initiatives, and is a division of the Office of Cultural Affairs (OCA). Public Art San Antonio (PASA) specifically seeks:

To encourage the selection of artists at the beginning stages of each project who can work successfully as members of the project design team, and to encourage collaboration among all arts and building disciplines;

To foster quality design and the creation of an array of artwork in all media, materials and disciplines that best respond to the distinctive characteristics of each project site and the community that it serves;

To select experienced artists who represent the diverse cultural landscape of San Antonio;

To encourage the selection of design enhancements that are accessible to the public and respect the historical resources and mobility of the citizenry;

To encourage artists, design enhancements and programs for open spaces, parks, infrastructure and facilities that contribute to neighborhood revitalization and enhance the quality and pride of neighborhoods in the city;

To encourage participation by citizens in the process of acquiring and commissioning of design enhancements;

To encourage the role of public art and design enhancements in enhancing economic development and cultural tourism;

To encourage the role of artists in the functional design of eligible capital improvement projects;

To exhibit art in designated city facilities for the enjoyment of the public and to heighten awareness and appreciation for local artists; and

To maintain and provide stewardship of the city public art and design enhancements collection.

Sec. 35-651. - Eligible and Ineligible Public Art and Design Enhancements.

(a) Eligible Public Art and Design Enhancements. It is the policy of the City of San Antonio that all public art and design enhancements commissioned or acquired through PASA are designed by an artist, craftsman or an artist or craftsman in collaboration with the project architect, landscape architect or engineer. Such artworks may include, but are not limited to the following:

(1) The incremental costs of infrastructure elements, such as sound-walls, utility structures, roadway elements and other items if designed by an artist or design team that includes an artist co-designer.

(2) Artistic or aesthetic elements of the overall architecture or landscape design if created by a professional artist or a design team that includes a professional visual artist.

(3) Earthworks, neon, glass, mosaics, photographs, prints, calligraphy, any combination of forms of media including sound, literary elements, film, holographic images, and video systems; hybrids of any media and new genres.

(4) Murals or portable paintings in any material or variety of materials.

(5) Sculpture: freestanding, wall supported, or suspended; kinetic and electronic in any material or combination of materials.

(6) Temporary artworks or installations, if such artworks serve the purpose of providing community and educational outreach purposes.

(7) Public art and design enhancements that are an integral part of architecture, landscape architecture, and landscape design.

(b) Ineligible Public Art and Design Enhancements. Public art and design enhancements that are mass produced or of standard manufacture, such as playground equipment, fountains or statuary elements, unless incorporated into an artwork by a project artist, or reproductions, by mechanical or other means, of original artwork, except in the case of film, video, photography, printmaking or other media arts.

(c) Specifically excluded from this section is artwork in the museum collection of the San Antonio Museum of Art and the Witte Museum.

FINDINGS:

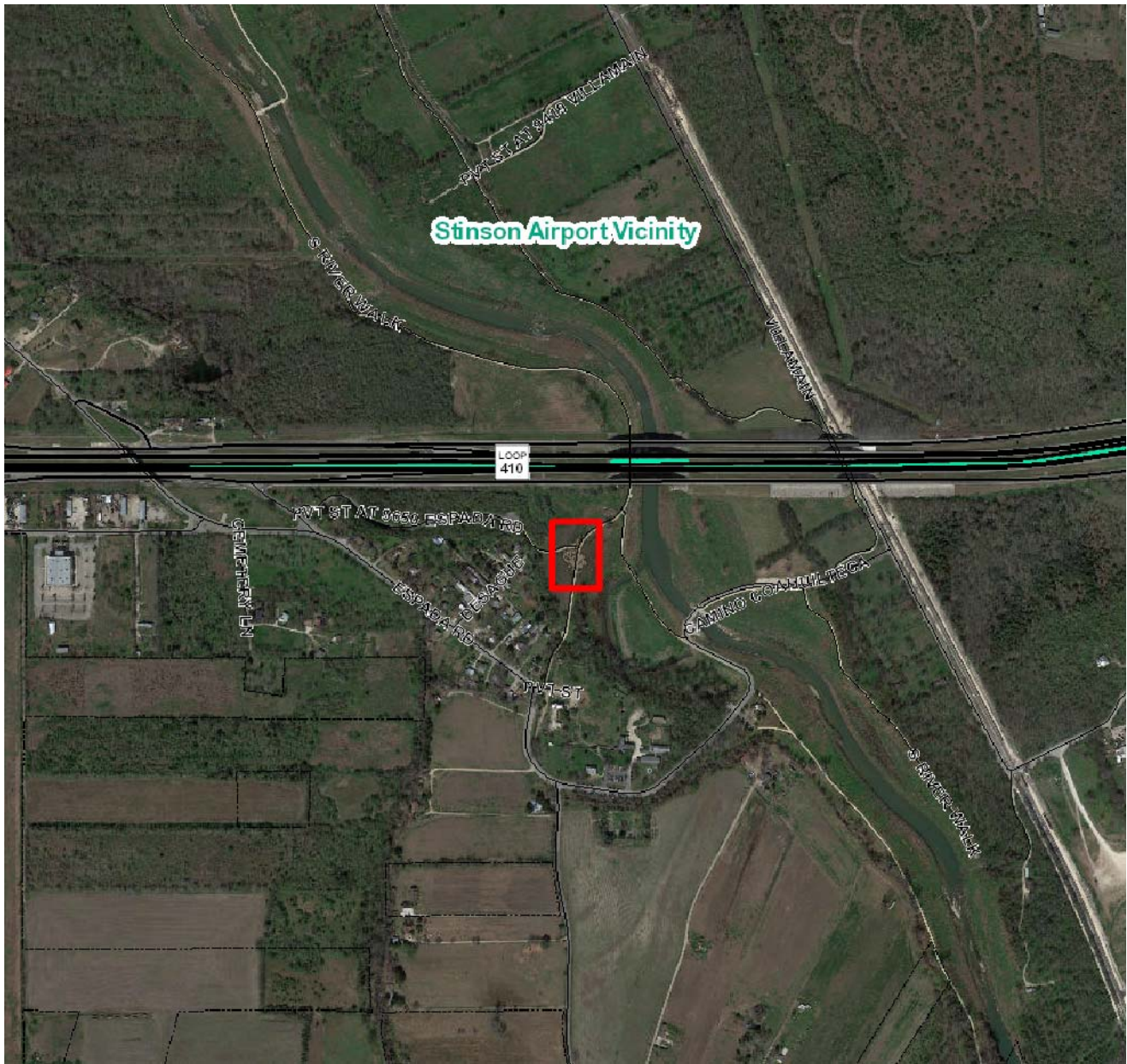
- a. The applicant has proposed Arbol de la Vida: Voces de Tierra, a tree of life themed sculpture to be forty (40) feet tall and eighty (80) feet wide at the Mission Espada Portal. The applicant has noted the sculpture will feature a steel structure with clay fired pieces depicting historic ranching themes, per a National Park Service interpretation.
- b. The proposed installation is located within the Mission Protection Overlay District, District 4. A survey is required to demonstrate height conformance with the MPOD.
- c. According to the UDC Article 5, the purpose of Public Art San Antonio (PASA) is to support a public process for incorporating artist services and artworks in the design of civic spaces and capital projects and to define the City of San Antonio's policies and guidelines for acquiring and commissioning art of the highest standards which shall enrich the quality of life for all residents and visitors of San Antonio. Additionally, the goals of Public Art San Antonio (PASA) are to create a better visual environment for the residents and visitors of San Antonio, to integrate the design work of artists into the development of city eligible capital improvement projects, and to promote tourism and the economic vitality of the city through the enhancement of public spaces. Staff finds that the proposed sculpture has met the objectives of Article 5 of the UDC.

RECOMMENDATION:

Staff recommends conceptual approval based on findings a and b with the stipulation that the applicant provide staff with a survey noting height conformance with the Mission Protection Overlay District height restrictions at this location.

CASE MANAGER:

Edward Hall



Flex Viewer

Powered by ArcGIS Server

Printed: Apr 13, 2017

The City of San Antonio does not guarantee the accuracy, adequacy, completeness or usefulness of any information. The City does not warrant the completeness, timeliness, or positional, thematic, and attribute accuracy of the GIS data. The GIS data, cartographic products, and associated applications are not legal representations of the depicted data. Information shown on these maps is derived from public records that are constantly undergoing revision. Under no circumstances should GIS-derived products be used for final design purposes. The City provides this information on an "as is" basis without warranty of any kind, express or implied, including but not limited to warranties of merchantability or fitness for a particular purpose, and assumes no responsibility for anyone's use of the information.

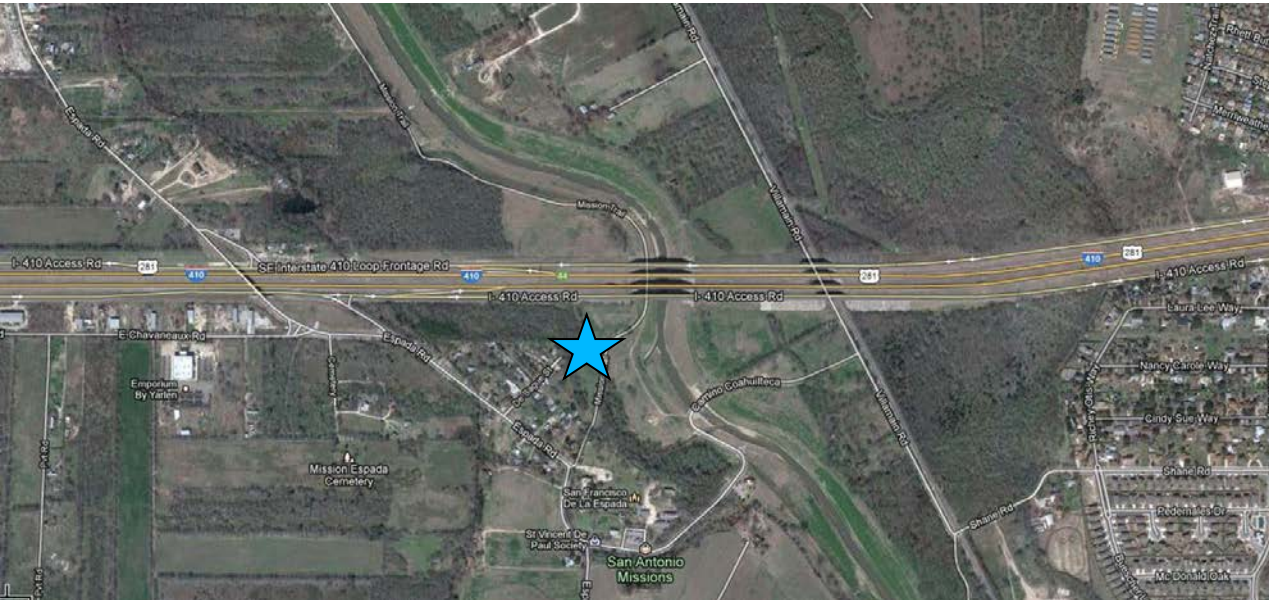


Arbol de la Vida: Voces de Tierra

Mission San Francisco de la Espada

Margarita Cabrera, Public Art Installation

Site /Citio



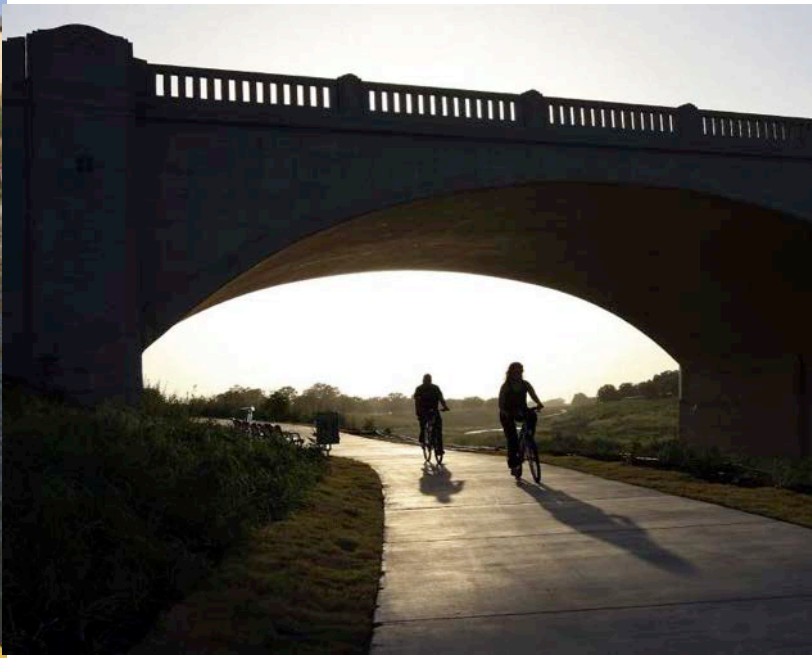
Public art adds beauty, gathering spots, changes our perspectives,
celebrates our communities, bridges our present with our historic past
SARIP / SARF

- The first to be built and most Southern of all San Antonio Missions: La Espada 1731 Relocated to the current site and named San Francisco de la Espada
- Its facade is the only one constructed with bricks made with local clay.
- The natives used the only known lime kilns that survived from the Spanish colonial periods.
- The missions currently active as a catholic church offering mass services.
- Rancho de las Cabras part of the Mission Espada helped start the ranching industry in Texas





- 2015 — UNESCO named the San Antonio Missions as one of 23 World Heritage Sites in the US.
- Sites are selected on the basis of having cultural, historical, scientific or some other form of significance, and they are legally protected by international treaties for future generations to enjoy them
- As Father Romel Perez- the active pastor at the Espada Mission said, “this is a blessing, an opportunity for all of us to know we are a part of history



- This is what I am most excited about-- the opportunity to make a true public work of art where everyone will be able to see themselves reflected. A public art work where all communities can come together, where they can be a part of the creation of the work from the beginning stages, and share in dialogue and the important recognition that this work of art will provides.
- I see this mission reach movement to redevelop and bring renewed attention to the Southside of SA focused on the natural environment, cultural heritage, and the creative arts as something to celebrate.
- So, I look forward to collaborating and sharing this creative process with the SA community.
- One way I envision sharing the creative process is through story telling

The Power of Stories Historias

**Stories invite us to go into different world but also
transform the way we think and live through our
emotions and experience**

Story of Tota

Pre-Conquest Mexico



Early example of a Mesoamerican world tree from western Mexico, Clay
H:28 cm American Museum of Natural History, NY



From Codex Azcatitlan (1995, fol 18)
Bibliothèque nationale de France



Artist Unknown, Tree of Life, Izucar de
Matamoros, 1920-1930

- The Tree of Life is all about celebrating the stories of our past our present and carving a path to a bright future.
- This is why I chose the traditional Mexican craft theme of the Tree of Life as a framework to invite the whole community to participate in projecting our collective story.
- Bountiful harvest

Clay Stories

Arbol de la Vida

A religious instrument used by the Spaniards during the spiritual conquest to create parallel between local believes and Catholicism in order to promote adherence to Christianity through the Story of Creation.



Tree of Life, Francisco Flores, Izoecar de Matamoros

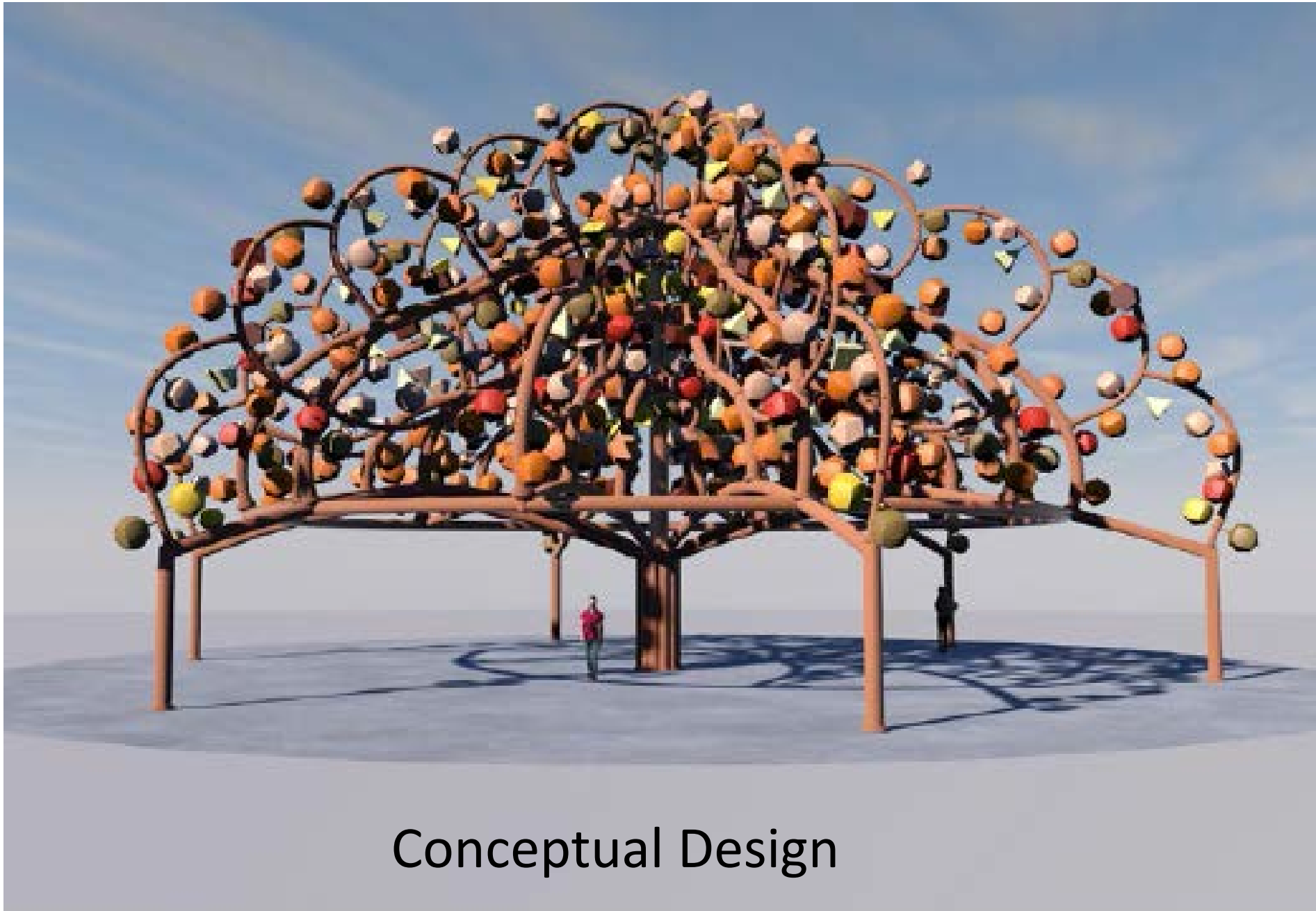


Story of Juan Quezada, Tiburcio Soteno, ,



Arbol de la Vida: Voces de Tierra

Mission San Francisco de la Espada



Conceptual Design

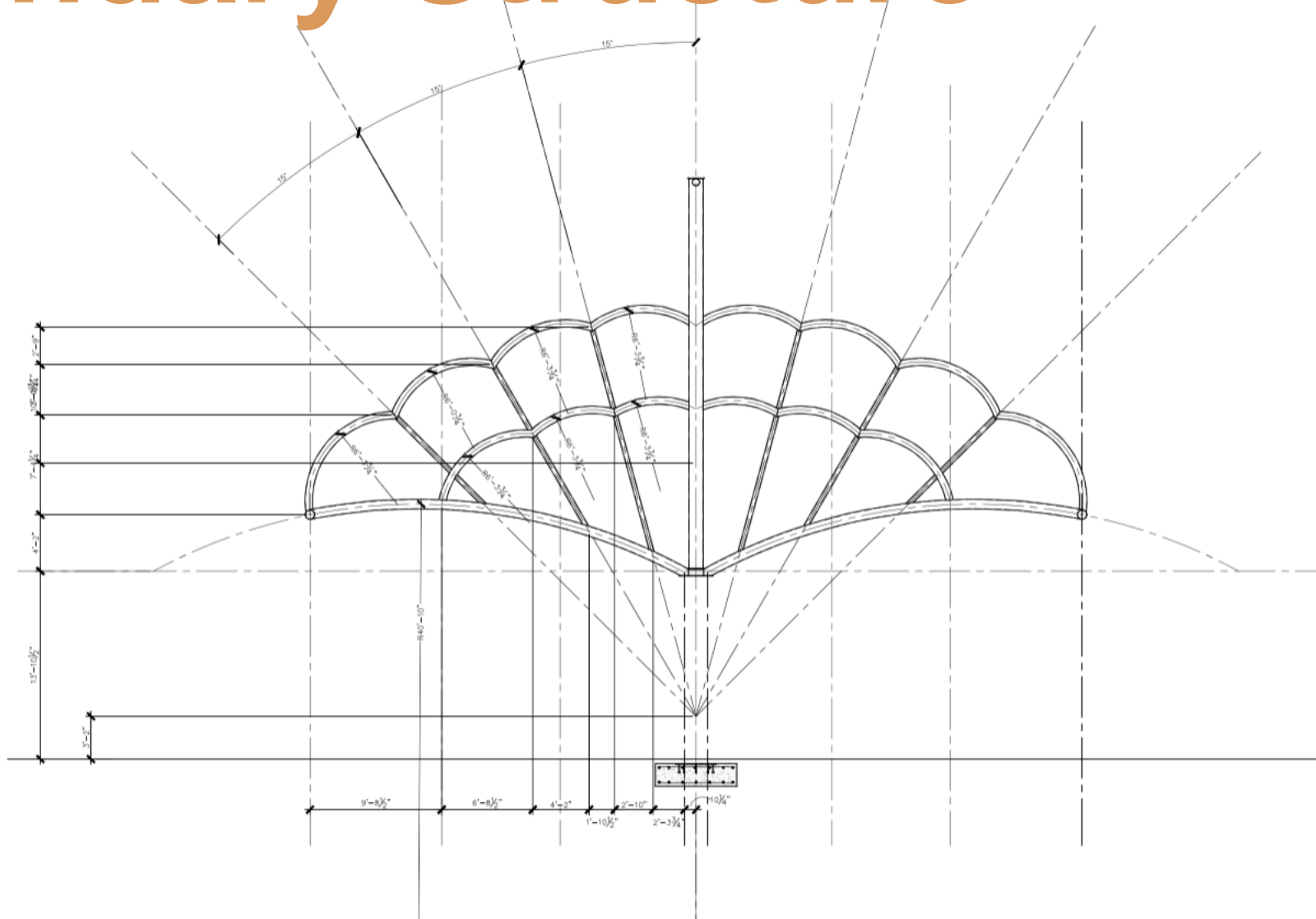
mary Structure

Technical drawing of a 'mary Structure' showing a complex, symmetrical, fan-like framework. The structure is defined by a central vertical axis and multiple curved ribs. Key dimensions and specifications include:

- Center Trunk Col.:** ROUND HSS 12.75x0.375
- Round HSS 4.0x0.226:** TYP. STRUT SIZE
- Round HSS 6.625x0.28:** TYP. BRANCH SIZE
- Field Weld New Col. Section to Existing w/Partial Penetration Groove Weld.**
- Round HSS 8.625x0.322:** TYP. BASE TRUNK SIZE
- Existing Col. to 7'-1 7/8" A.G. Field Verify.**
- Circular PL 3/4x2'-6" DIA. SHOP WELDED TO TOP OF ROUND HSS 8.625 COL'S.**
- Six Primary Frame Columns:** ROUND HSS 8.625x0.322

The drawing includes various dimensions for height and width, such as 15'-0", 13'-0", 11'-0", 9'-0", 7'-0", 5'-0", 3'-0", 1'-0", 1'-10", 2'-0", 2'-10", 2'-3 1/4", 1'-10 1/2", 4'-2", 6'-0 3/4", 6'-2 3/4", 5'-0 1/2", 6'-8 1/2", and 5'-0 1/2". It also shows angles of 15° and 10°.

Secondary Structure



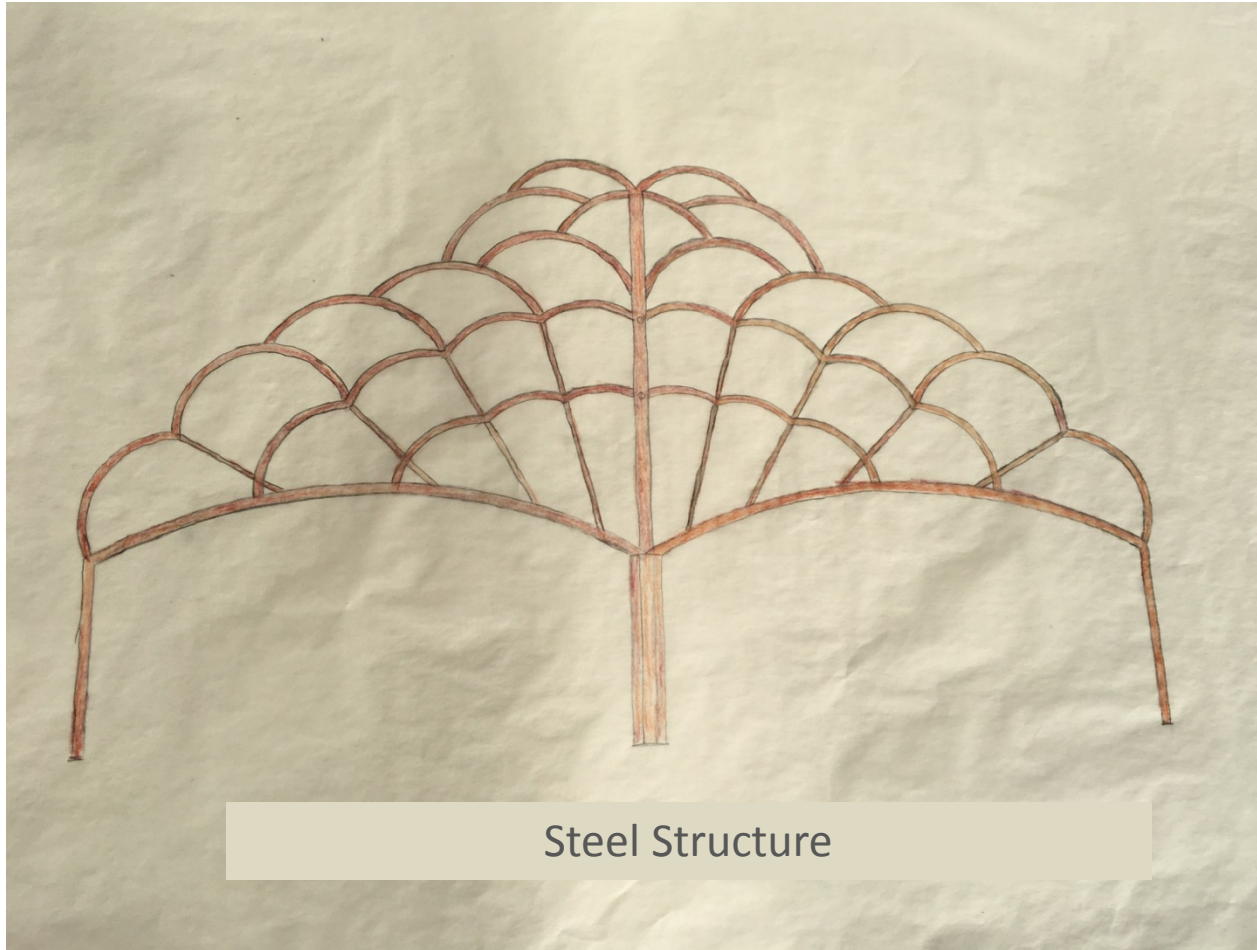
Technical drawing of a circular structure, likely a bridge or a large wheel, showing dimensions and annotations.

Dimensions:

- Overall width: $69'-3\frac{1}{2}"$
- Overall height: $34'-7\frac{1}{2}"$
- Radius: $30'$
- Angle: 30°

Annotations:

- NEW 6'-0" DIA. SPREAD FOOTING.
- NEW 8'-0" DIA. SPREAD FOOTING.
- EXISTING 18" DIA. PIERS. TYP.



Steel Structure



Community Pieces and Filler Pieces



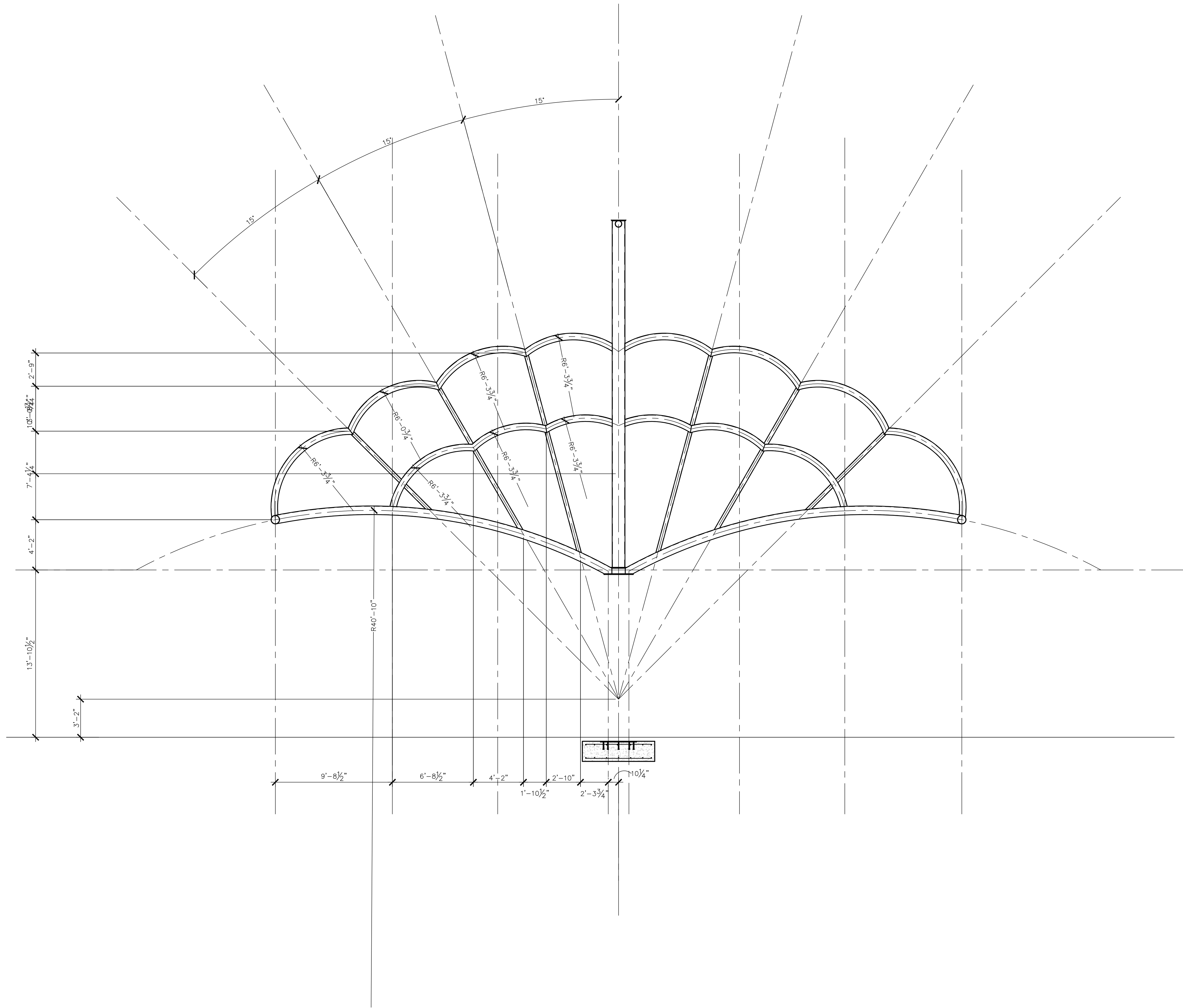
Mock up of Window – $\frac{1}{4}$ of the Size

Arbol de La Vida: Voces de Tierra

Community Public Art Project that will be formed by the people of San Antonio.

Project exists in 4 parts

- 1- Series of “Charlas” community dialogues – themes crafted
- 2- Clay workshops hosted by local organizations
- 3- Public Art fabrication and installation
- 4- Sustainable Cultural Programming – Staged in the round: storytelling: where stories come alive through dance, music, theatre, fiestas, etc.



1 SECONDARY FRAME ELEVATION
S3.1 SCALE : 1/4"=1'-0"

NO.	REVISION	DATE

STRUCTURAL DESIGN
CONSULTING
Texas Engineering Firm #4888
100 Park Road So.
Wimberley, Texas 78676
830-935-2640
830-935-2596

SAN ANTONIO RIVER FOUNDATION
ARBOR DE LA VIDA
MARGARITA CABRERA

This drawing and its reproductions are the property of the engineer and may not be reproduced, published, or used in any way without the permission of the engineer.

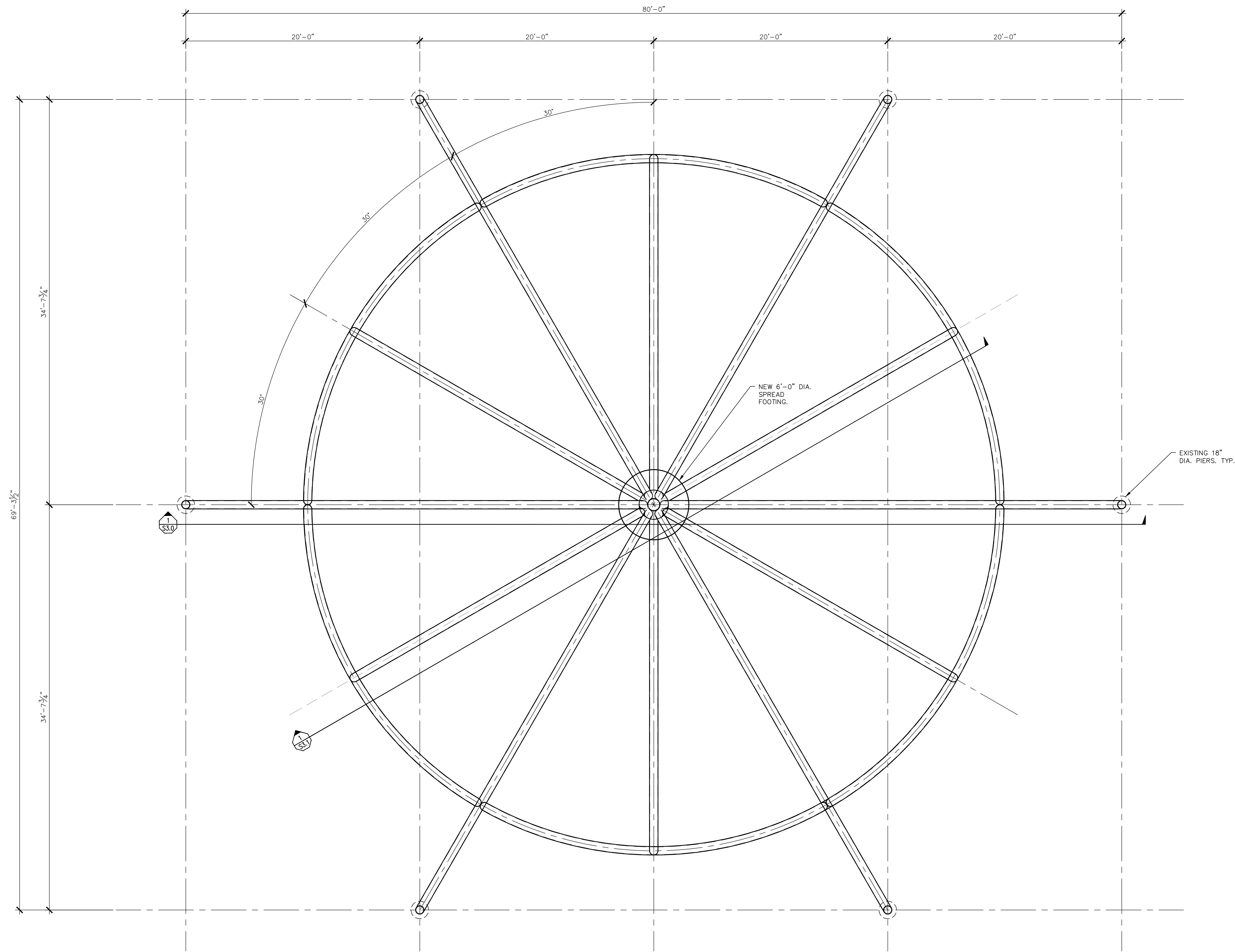
INTERIM
REVIEW
DOCUMENTS

(NOT INTENDED FOR BIDDING,
PERMIT OR CONSTRUCTION
PURPOSES)

JACK HARRISON
LOUIS LICENSE No. 85472

DATE: 01.27.17
DRAWN BY: JWH
DESIGNED BY: JWH
CHECKED BY: JWH
PROJ. NO. 13702016
SHEET TITLE:
SECONDARY FRAME ELEVATION

SHEET: S- 3.1



1
S2.0

FRAMING PLAN

SCALE : 1/4"=1'-0"

NO.	REVISION	DATE

STRUCTURAL DESIGN CONSULTING

Texas Engineering Firm #4888
100 Park Road So.
Wimberley, Texas 78676
830-935-2640
830-935-2596

SAN ANTONIO RIVER FOUNDATION

MEL CHIN – COCOBIJOS

This drawing and its reproductions are the property of the engineer and may not be reproduced, published, or used in any way without the permission of the engineer.

INTERIM REVIEW DOCUMENTS

(NOT INTENDED FOR BIDDING, PERMIT OR CONSTRUCTION PURPOSES)

JACK HARRISON
TEXAS LICENSE No. 85472

DATE:	01.27.17
DRAWN BY:	JWH
DESIGNED BY:	JWH
CHECKED BY:	JWH
PROJ. NO.	13702016
SHEET TITLE:	FOUNDATION FRAMING PLAN
SHEET:	S-2.0