

Data Source: City of San Antonio Enterprise GIS, Bexar Metro 911, Bexar Appraisal District

"This Geographic Information System Product, received from The City of San Antonio is provided 'as is' without warranty of any kind, and the City of San Antonio expressly disclaims all express and implied warranties, including but not limited to the implied warranties of merchantability and fitness for a particular purpose. The City of San Antonio does not warrant, guarantee, or make any representations regarding the use, or the results of the use, of the information provided to you by the City of San Antonio in terms of correctness, accuracy, reliability, timeliness or otherwise. The entire risk as to the results and performance of any information obtained from the City of San Antonio is entirely assumed by the recipient."

"Please contact the responsible City of San Antonio Department for specific determinations."

City of San Antonio Planning Department. Maps may be ordered at: (210) 207-7873

Map Created by: Gustavo Gutierrez

Map Last Edited: 4/11/2017

Map file Location: W:\Archived\Neighborhoods\Land_Use\Amendments\Amend_17050_10ECorridor_B&W.mxd

PDF Filename: 1612GG.pdf



Proposed Low Density Residential



Low Density Residential



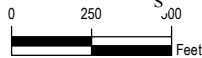
Neighborhood Commercial



Parks/Open Space



Industrial



IH-10 E Corridor Perimeter PlanProposed Plan Amendment 17050 Area

City of San Antonio
Planning and Community
Development Department

John M. Dugan, AICP
Director

Cliff Morton Development and
Business Services Center
PO Box 830968
San Antonio, TX 78283

