

Photos
Subject Property – 939 Santa Anna Street

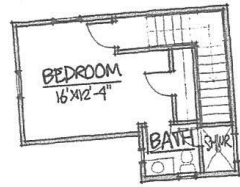




Surrounding properties



Site Plan

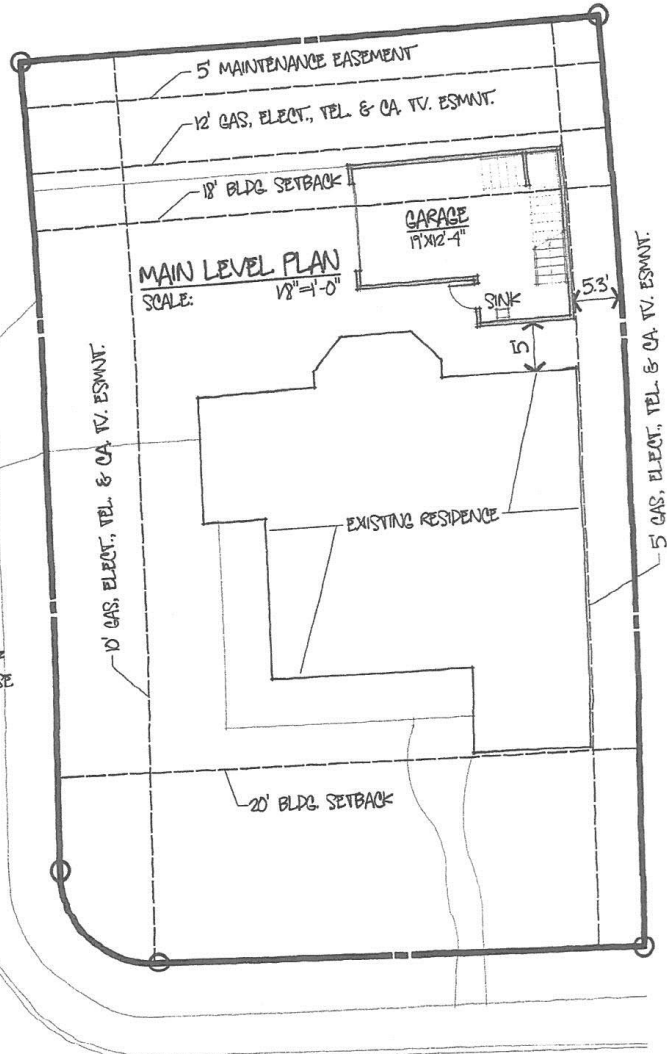


AREAS:

MAIN LEVEL	-	351 SQ.FT.
UPPER LEVEL	-	320 SQ.FT.
TOTAL GROSS	-	671 SQ.FT.

MICHIGAN AVENUE

OUTLINE OF EXIST. HOUSE



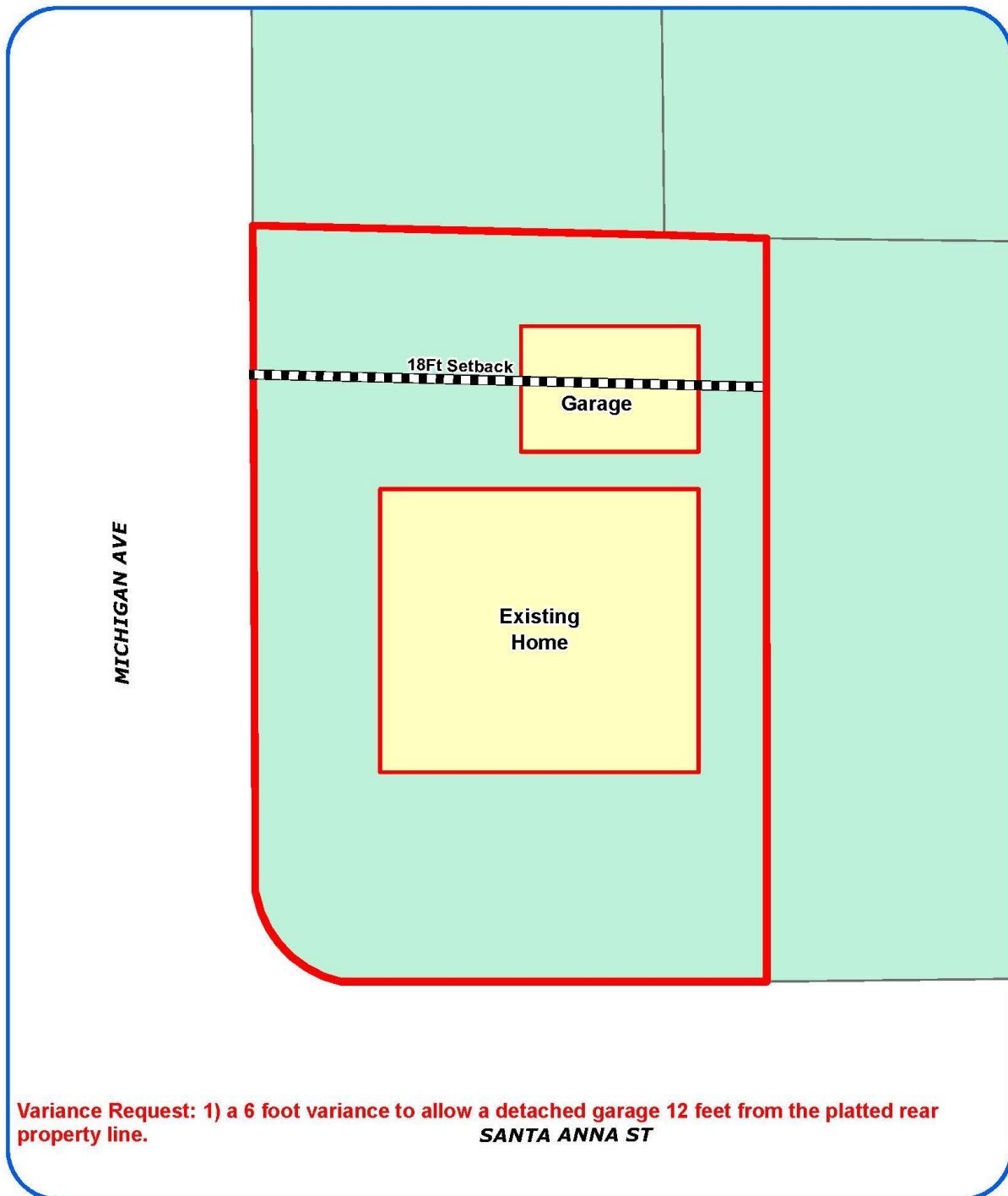
LERMA/GARZA ACCESSORY BLDG.

HCDA
champion designs associates
matthew champion tel.210.7647232

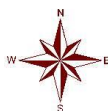
939 SANTA ANNA

SKETCH 1 03.27.2017

Plot Plan



Board of Adjustment
Plot Plan for
Case No A-17-105



"NOT TO SCALE,
FOR ILLUSTRATIVE PURPOSES ONLY"
Council District: 1

939 Santa Anna

Development Services Department
City of San Antonio

**Board of Adjustment
Notification Plan for
Case No A-17-105**

San Antonio City Limits
Subject Property
200' Notification Boundary
Council District: 1

*NOT TO SCALE,
FOR ILLUSTRATIVE PURPOSES ONLY

Development Services Department
City of San Antonio