

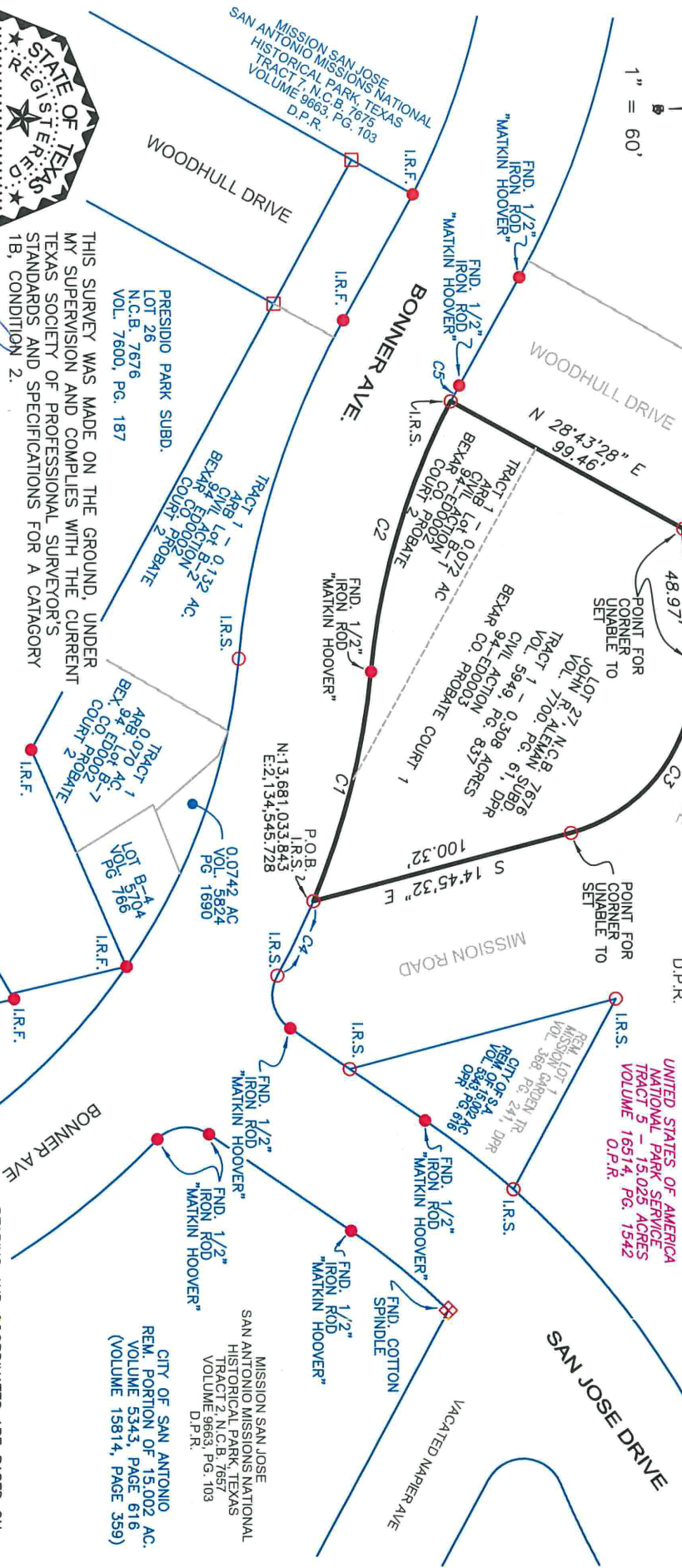


1" = 60'

BEARING AND COORDINATES ARE BASED ON LAMBERT GRID, TEXAS STATE PLANE COORDINATES, SOUTH CENTRAL ZONE NAD 83/93. COORDINATES, SHOWN HEREON HAVE AN APPLIED SURFACE SCALE FACTOR OF 1.00017

MISSION SAN JOSE HISTORICAL PARK, TEXAS
TRACT 5, N.C.B. 7664
VOLUME 9663, PG. 103
D.P.R.

UNITED STATES OF AMERICA
NATIONAL PARK SERVICE
TRACT 5 - 15.025 ACRES
VOLUME 16514, PG. 1542
O.P.R.



REX L. HACKETT, R.P.L.S., L.S.L.S.
REGISTERED PROFESSIONAL LAND SURVEYOR
LICENSE NO. 5573
DATE: 01-17-2017
PROJECT NO. 1802.14

THIS SURVEY WAS MADE ON THE GROUND, UNDER MY SUPERVISION AND COMPLIES WITH THE CURRENT TEXAS SOCIETY OF PROFESSIONAL SURVEYORS STANDARDS AND SPECIFICATIONS FOR A CATEGORY 1B, CONDITION 2.

CURVE	ARC LENGTH	RADIUS	DELTA ANGLE	CHORD BEARING	CHORD LENGTH
C1	89.07'	294.31'	17°20'22"	N 75°39'27" W	88.73'
C2	106.39'	275.17'	22°09'12"	N 73°20'07" W	105.73'
C3	86.42'	62.50'	79°13'10"	S 54°43'15" E	79.69'
C4	31.14'	294.31'	6°03'42"	S 63°57'25" E	31.12'
C5	6.79'	275.17'	1°24'50"	N 61°33'06" W	6.79'

FORD ENGINEERING INC.

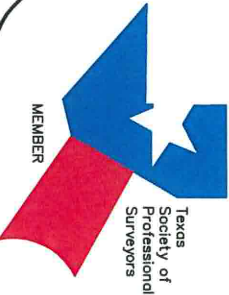
ENGINEERING SURVEYING PLANNING
10927 WTE DRIVE, STE 104, SAN ANTONIO, TEXAS 78217 ■ P:(210) 590-4777 ■ F:(210) 590-4940
T:(210) 590-4777 ■ WWW.FORDENGINEERING.COM ■ TPLS No. 10018400

BEARING AND COORDINATES ARE BASED ON LAMBERT GRID, TEXAS STATE PLANE COORDINATES, SOUTH CENTRAL ZONE NAD 83/93. COORDINATES, SHOWN HEREON HAVE AN APPLIED SURFACE SCALE FACTOR OF 1.00017

PLAT SHOWING

0.3850 ACRES
16,770.6 Sq. Ft.

BEING THE REMAINDER OF LOT 27, N.C.B. 7676 JOHN R. ALEMAN SUBD. IN VOLUME 7700, PAGE 61 OF THE DEED AND PLAT RECORDS, BEING TRACT 1 - 0.308 ACRES AWARDED TO THE CITY OF SAN ANTONIO IN CIVIL ACTION 94-ED0003 OF BEXAR COUNTY, PROBATE COURT NO. 1 AND ALSO TRACT 1 - 0.072 ACRES, ARB LOT B-1 AWARDED TO THE CITY OF SAN ANTONIO IN CIVIL ACTION 94-ED0002 OF THE BEXAR COUNTY, PROBATE COURT NO. 2, IN BEXAR COUNTY, TEXAS.



MEMBER



FORD ENGINEERING, INC

Date: January 17, 2017

Project No: 1802.14

FIELD NOTES DESCRIPTION

0.3850 ACRES (16,770.6 sq. ft.)

A 0.3850 acre (16,770.6 sq. ft.) tract of land, being the remainder of Lot 27, N.C.B. 7676, John R. Aleman Subdivision in Volume 7700, Page 61 of the Deed and Plat Records, called Tract 1 – 0.308 acres awarded to the City of San Antonio in Civil Action 94-ED0003, Bexar County Probate Court No. 1 and Tract 1 – 0.072 acres, ARB Lot B-1 awarded to the City of San Antonio in Civil Action 94-ED0002 of the Bexar County, Probate Court No. 2, also being a portion of Tract 5, N.C.B. 7664 conveyed to the United States of America, c/o National Park Service in Volume 16514, Page 1542 of the Official Public Records of Real Property of Bexar County, Texas, also shown as Tract 5 – 15.025 Acres on the plat of Right-of Way and Boundary Survey, Mission San Jose San Antonio Missions National Historical Park, Texas recorded in Volume 9663, Page 103 of the Deed and Plat Records of Bexar County, Texas, being more particularly described as follows:

BEGINNING: at a ½ inch iron rod (N = 13,681,033.843, E = 2,134,545.728) with cap marked “Ford Eng Inc” set at the intersection of the western line of Mission Road, the Eastern line of said Lot 27, John R. Aleman Subdivision and the Northern line of Bonner Avenue and being on the Southern line of said Tract 5, from which a ½ inch iron rod with cap marked “Ford Eng Inc” set for a corner of said Tract 5, a corner of said Bonner Avenue bears with a curve to the right (Southeasterly) having a Delta angle of 06°03’42”, a Radius of 294.31 feet, an Arc length of 31.14 feet and a Chord bearing of S 63°57’25” E – 31.12 feet;

THENCE: Along the Northern line of said Bonner Avenue, the Southern line of said Tract 5, a curve to the left (Northwesterly) and passing a corner of said Tract 1 – 0.072 acres, having a Delta angle of 17°20’22”, a Radius of 294.31 feet, an Arc length of 89.07 feet and a Chord bearing of N 75°39’27” W – 88.73 feet to a ½ inch iron rod with cap marked “Matkin Hoover” found for a corner of said Tract 1 – 0.072 acres, a corner of said Tract 5, a corner of said Bonner Avenue, for a corner of this tract;

THENCE: Continuing along the Northern line of said Bonner Avenue, the Southern line of said Tract 5 and the Southern line of said Tract 1 – 0.072 acres, a curve to the right having a Delta angle of 22°09’12”, Radius of 275.17 feet, an Arc length of 106.39 feet and a Chord bearing of N 73°20’07” W – 105.73 feet to a ½ inch iron rod with cap marked “Ford Eng Inc” for the Southwestern corner of said Tract 1 – 0.072 acres at the intersection of Southeastern line of Woodhull Drive and the Northern line of Bonner Avenue, for the Southwestern corner of this tract, from which a ½ inch iron rod with cap marked “Matkin Hoover” found for a corner of said Tract 5, a corner of Bonner Avenue, bears with a curve to the right having a Delta angle of



FORD ENGINEERING, INC

01°24'50", a Radius of 275.17 feet, an Arc length of 6.79 feet and a Chord bearing of N 61°33'06" W – 6.79 feet;

THENCE: N 28°43'28" E – 99.46 feet across said Tract 5 and along the Southeastern line of Woodhull Drive, the Northwestern line of said Tract 1 – 0.072 acres, the Northwestern line of said Lot 27, John R. Aleman Subdivision to a point for corner (un-able to set) for the Northwestern corner of said Lot 27, the Northwestern corner of said Tract 1 – 0.308 acres, for the Northwestern corner of this tract;

THENCE: N 85°52'28" E – 48.97 feet continuing across said Tract 5 and along a Southern line of Napier Avenue, a Northern line of said Lot 27, a Northern line of said Tract 1 – 0.308 acres to a point for corner (un-able to set) for a corner of said Lot 27, a corner of said Tract 1 – 0.308 acres, a corner of Napier Avenue, for a corner of this tract;

THENCE: Continuing across said Tract 5 and along a Southern line of Napier Avenue, a Northern line of said Lot 27, a Northern line of said Tract 1 – 0.308 acres, a curve to the right (Southeasterly), having a Delta angle of 79°13'10", a Radius of 62.50 feet, an Arc length of 86.42 feet and a Chord bearing of S 54°43'15" E – 79.69 feet to a point for corner (un-able to set) on the Southwestern line of Mission Road, a corner of said Lot 27, a corner of said Tract 1 – 0.308 acres, for a corner of this tract;

THENCE: S 14°45'32" E – 100.32 feet along the Southwestern line of Mission Drive, the Northeastern line of said Lot 27, the Northeastern line of said Tract 1 – 0.308 acres to the **POINT OF BEGINNING** and containing 0.3850 acres (16,770.6 sq. ft.) of land, *according to a survey made on the ground under my supervision.*

Corresponding plat prepared.

1802.14 John R Aleman Lot 27.docx

BEARINGS AND COORDINATES ARE BASED ON LAMBERT GRID, TEXAS STATE PLANE COORDINATES, SOUTH CENTRAL ZONE NAD 83/93; COORDINATES SHOWN HEREON HAVE AN APPLIED SURFACE SCALE FACTOR OF 1.00017.



Rex L. Hackett, R.P.L.S., L.S.L.S.
Registered Professional Land Surveyor
License Number 5573