

The map displays the proposed annexation areas for the City of San Antonio, specifically the IH 10 West and Babcock Rd areas. The CoSA Boundary is highlighted in red, while the surrounding areas are shaded in light brown. Major highways, including IH 10 and Loop 1604, are shown in grey. The map also includes labels for Camp Stanley, Camp Bullis, and the City of San Antonio. A legend in the bottom left corner defines the symbols used: Major Highways (thick grey line), Minor Highways (thin grey line), Streets (thin black line), Creeks (blue line), and Military Bases (grey area). A scale bar in the bottom right corner indicates distances in miles (0, 0.375, 0.75, 1.5). A north arrow is located in the bottom right corner.

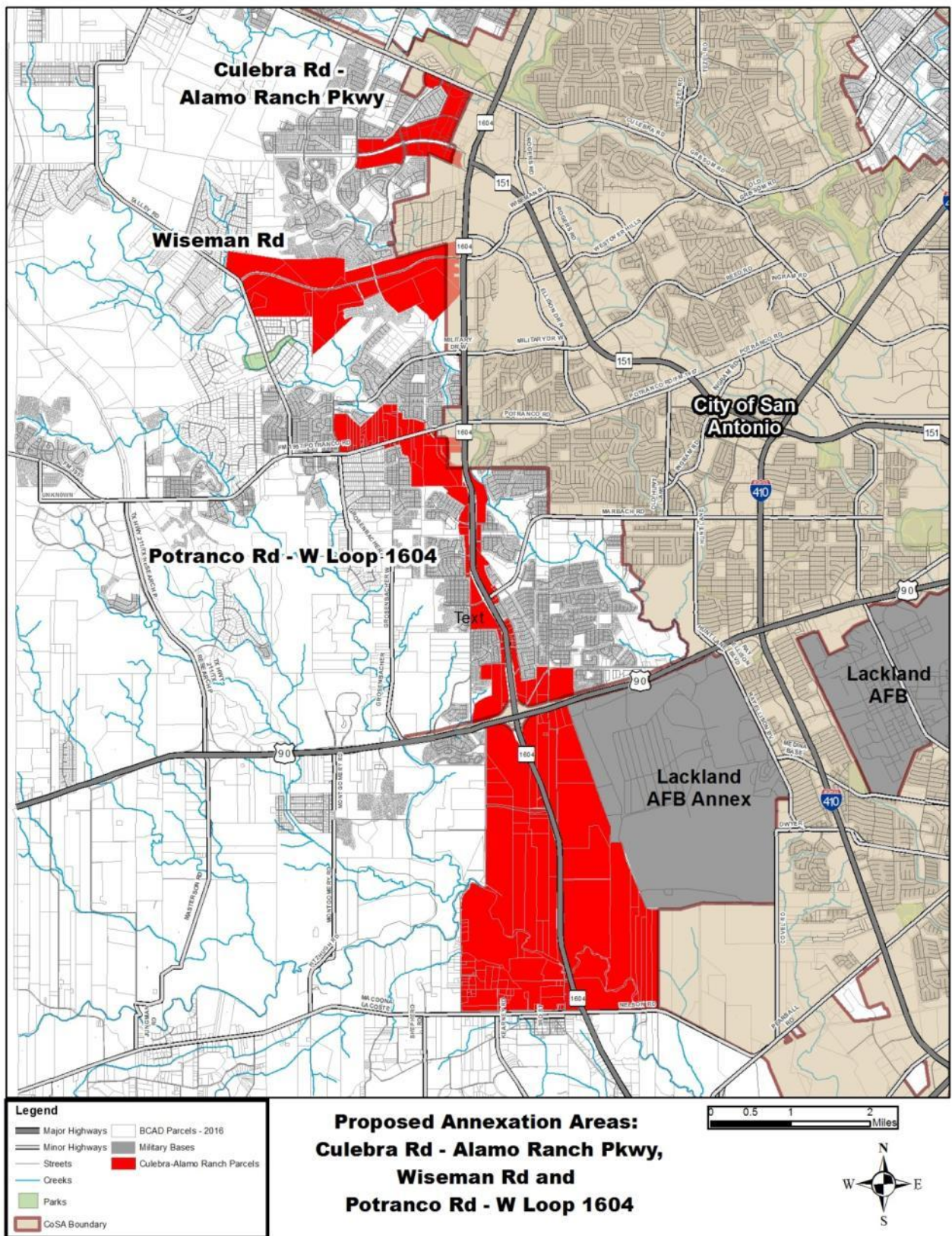
Legend

- Major Highways
- Minor Highways
- Streets
- Creeks
- Military Bases
- BCAD Parcels - 2016
- CoSA Boundary

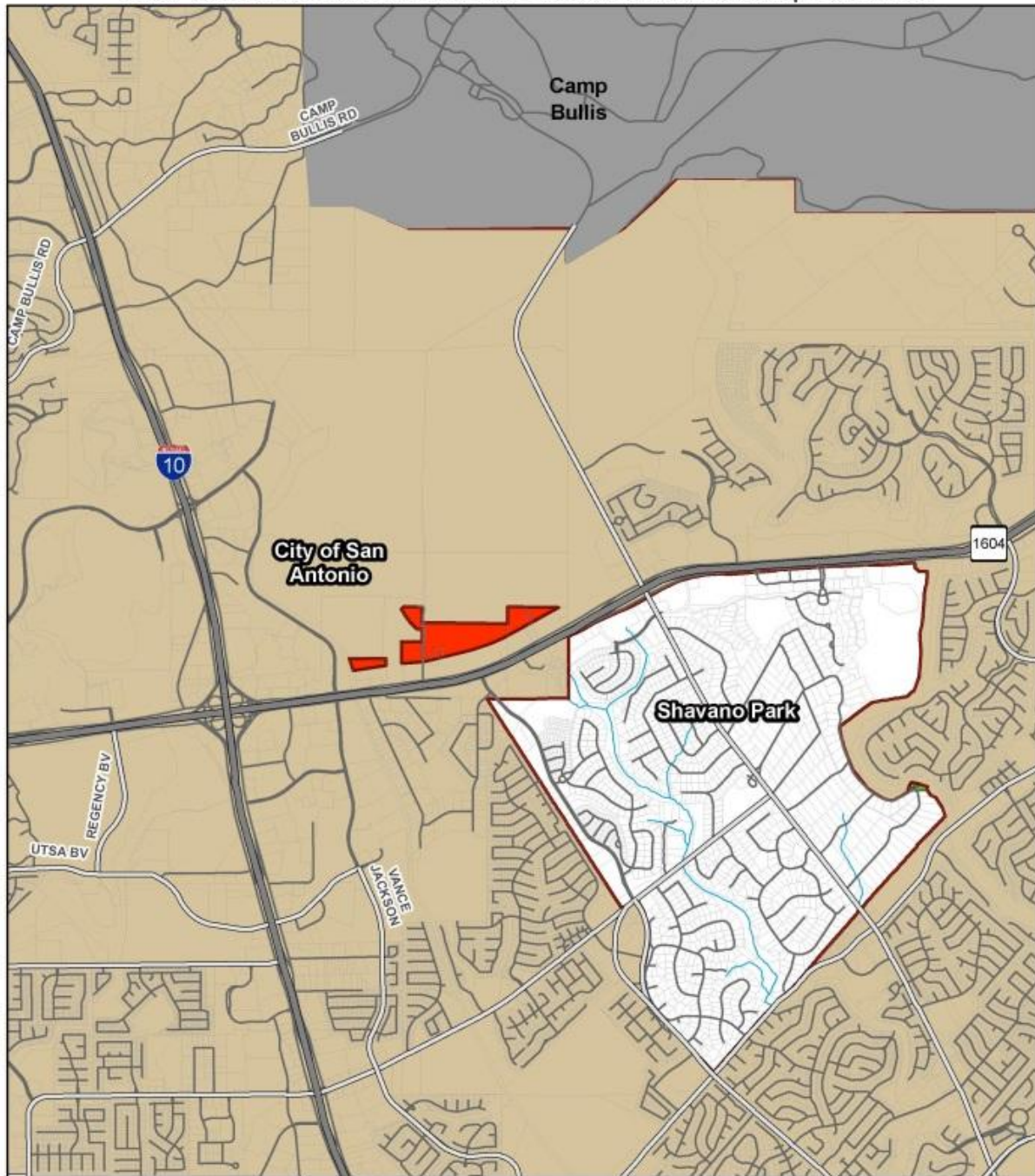
Proposed Annexation Areas
IH 10 West and Babcock Rd Areas

Scale: 0 0.375 0.75 1.5 Miles

North Arrow

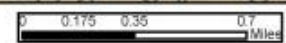
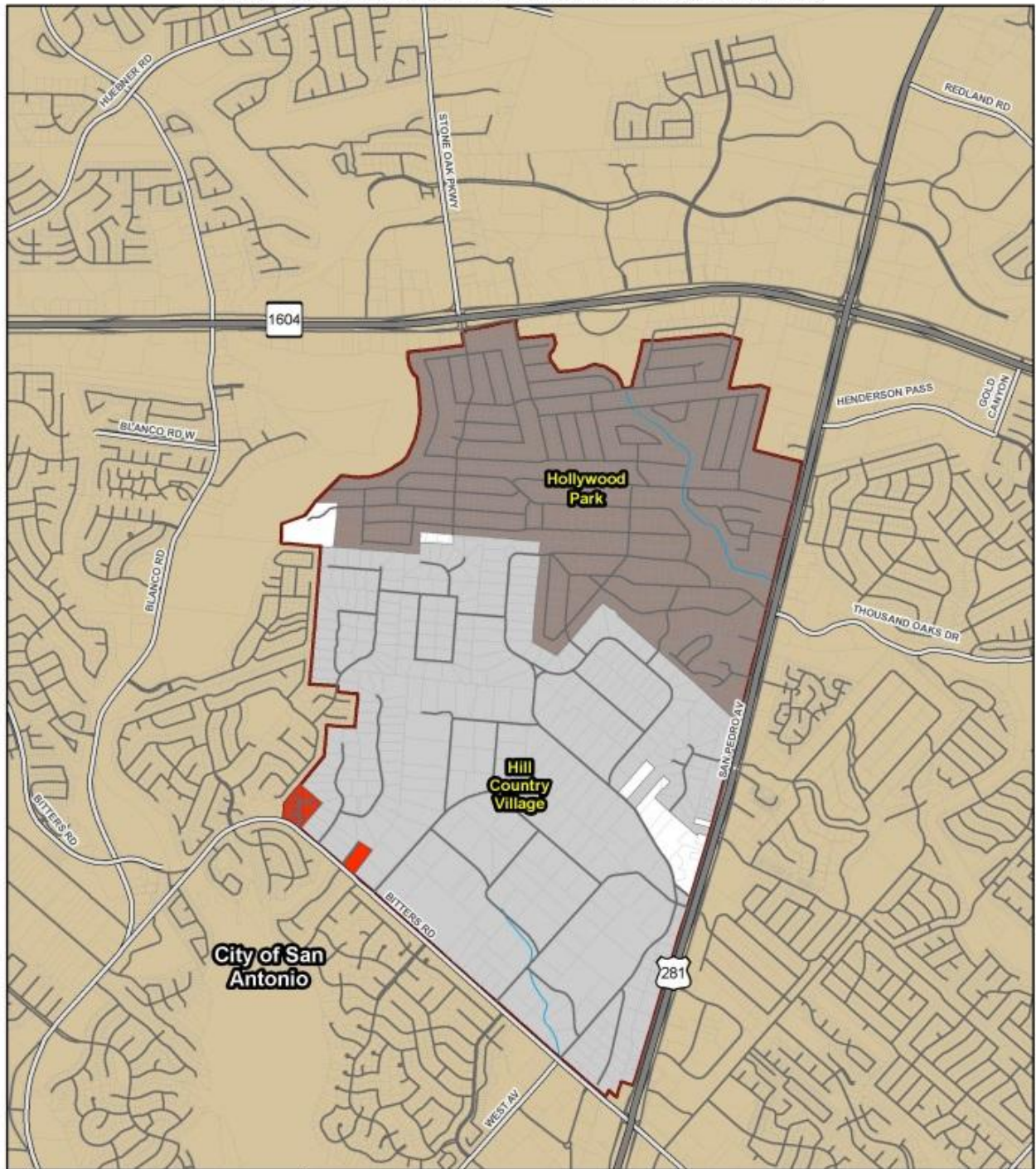


PROPOSED ANNEXATION AREAS - Vance Jackson Rd-Loop 1604 Area



**Proposed Annexation Areas
Vance Jackson Rd N- Loop 1604 W**

PROPOSED ANNEXATION AREAS - Bitters Road Area

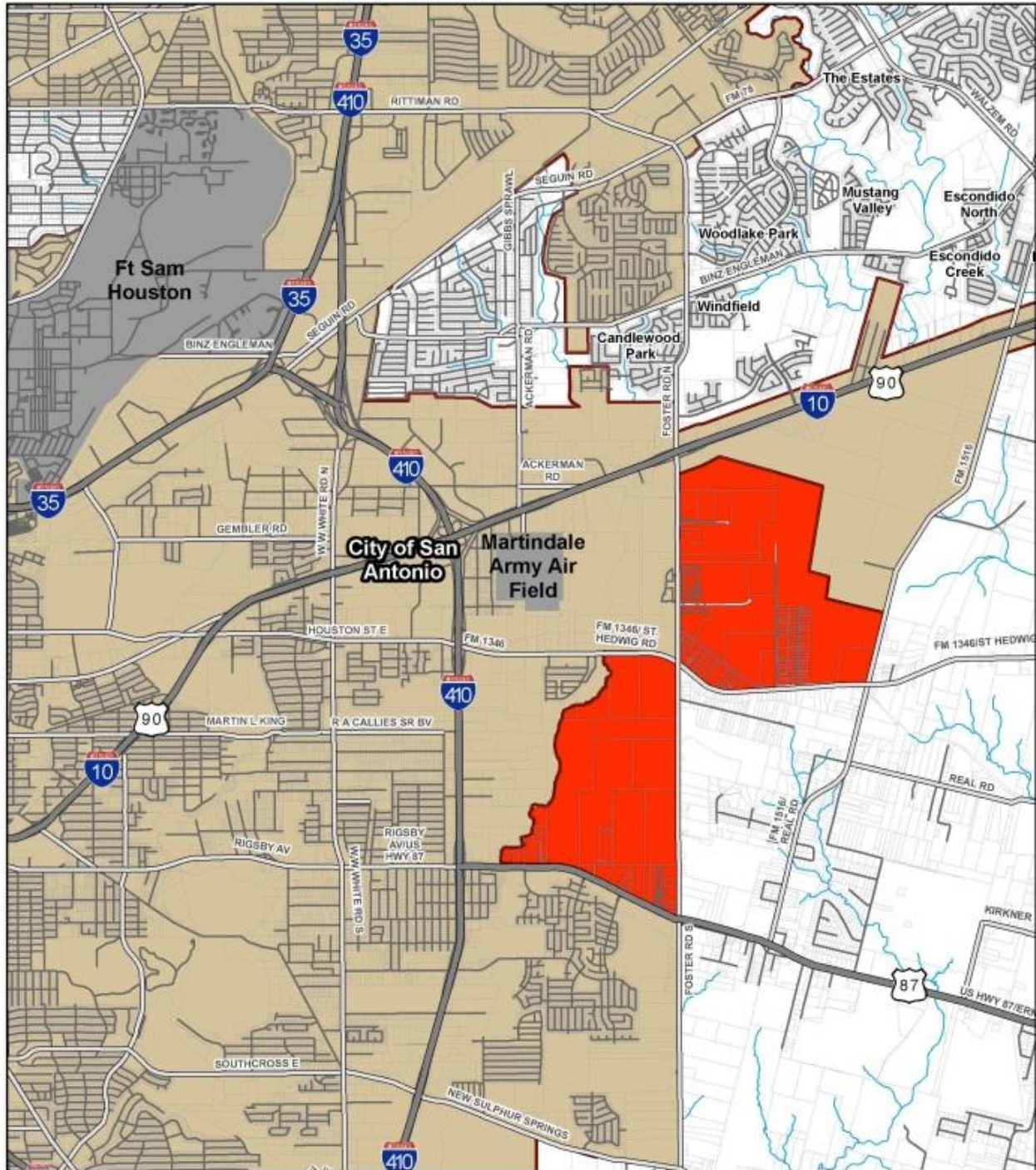


Proposed Annexation Areas West Bitters Rd Area



South Foster Road Area

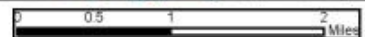
PROPOSED ANNEXATION AREAS



- Legend**
- Major Highways
 - Minor Highways
 - Streets
 - Creeks
 - Parks
 - Military Bases
 - BCAD Parcels - 2016
 - CoSA Boundary
 - NE I-410-US90 Parcels
 - SE IH10-FosterRd Parcels

2,520 Acres (3.94 sq. mi.)

Proposed Annexation Areas Foster Rd Area



IH10 East-Loop 1604 East Interchange

