

Data Source: City of San Antonio Enterprise GIS, Bexar Metro 911, Bexar Appraisal District
 This document is intended for informational purposes only. It is not a legal document and should not be used for legal purposes. The City of San Antonio is not responsible for any errors or omissions in this document. The City of San Antonio is not responsible for any damages or losses resulting from the use of this document. The City of San Antonio is not responsible for any claims or liabilities resulting from the use of this document. The City of San Antonio is not responsible for any claims or liabilities resulting from the use of this document.

Map Created by: gg01173
 Map Creation Date: 6/28/2017
 Map file location: W:\Projects\2017\Planning\Black&White\Proposed Annexation Aerial.mxd
 PDF Filename: 1612GG10.pdf

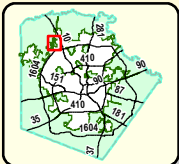
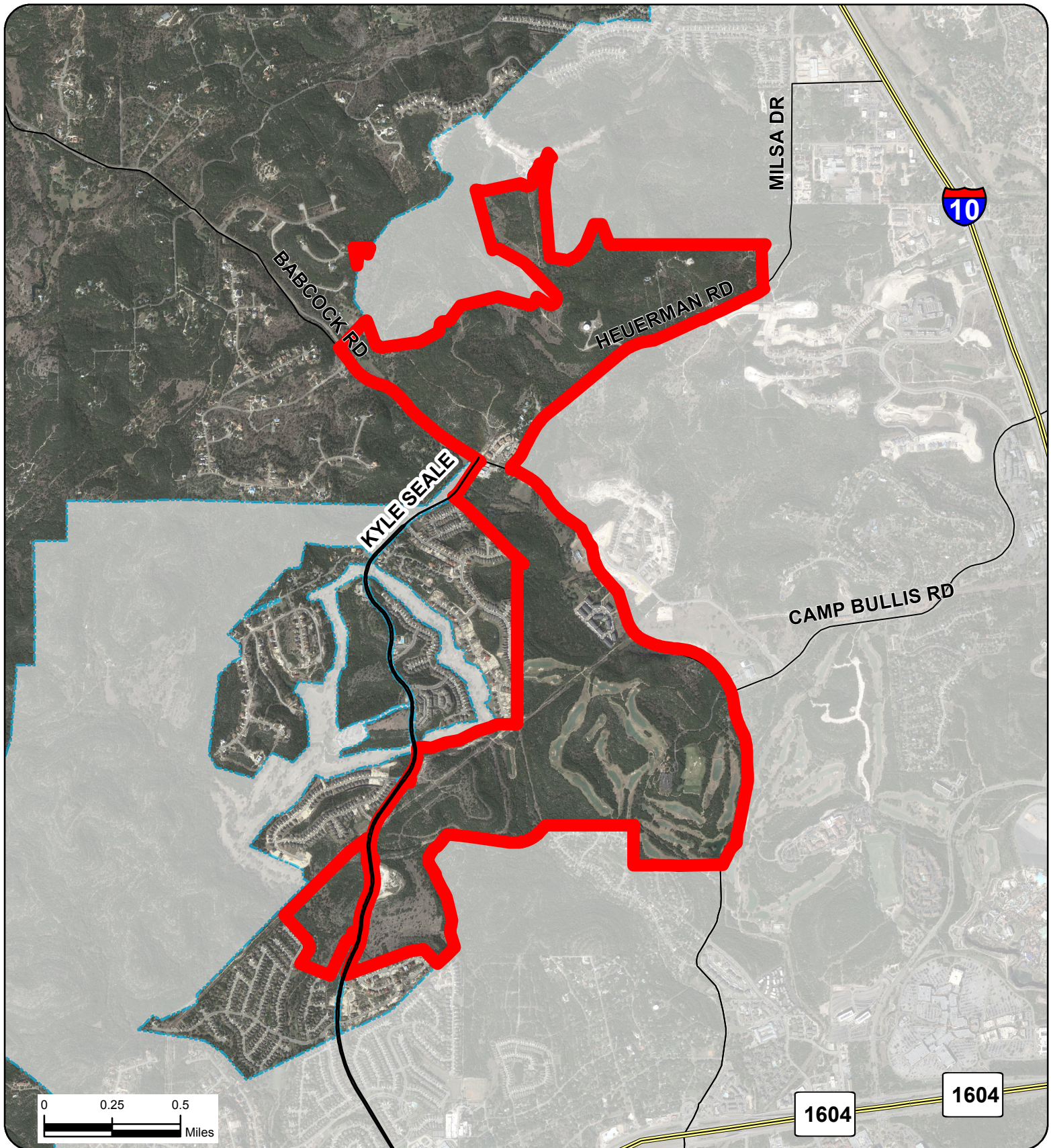
City of San Antonio Cities and Towns Military Bases



Proposed Annexation *IH 10 West/Loop 1604 Corridor*

City of San Antonio
 Information Technology Services Department
 GIS Public Services Division
 Riverview Towers
 111 Soledad St. 9th Floor
 San Antonio, TX 78205





Data Source: City of San Antonio Enterprise GIS, Bear Metro 911, Bear Appraisal District

This document is a preliminary map and should not be used for legal purposes. It is intended for informational purposes only. The City of San Antonio is not responsible for any errors or omissions in this map. The City of San Antonio is not responsible for any damages or losses resulting from the use of this map. The City of San Antonio is not responsible for any claims or liabilities resulting from the use of this map. The City of San Antonio is not responsible for any claims or liabilities resulting from the use of this map.

Map Created by: gg01173
Map Creation Date: 6/28/2017
Map file location: W:\Projects\2017\Planning\Black&White\Proposed Annexation Aerial.mxd
PDF Filename: 1612GG10.pdf

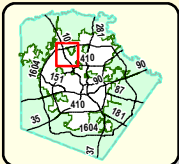
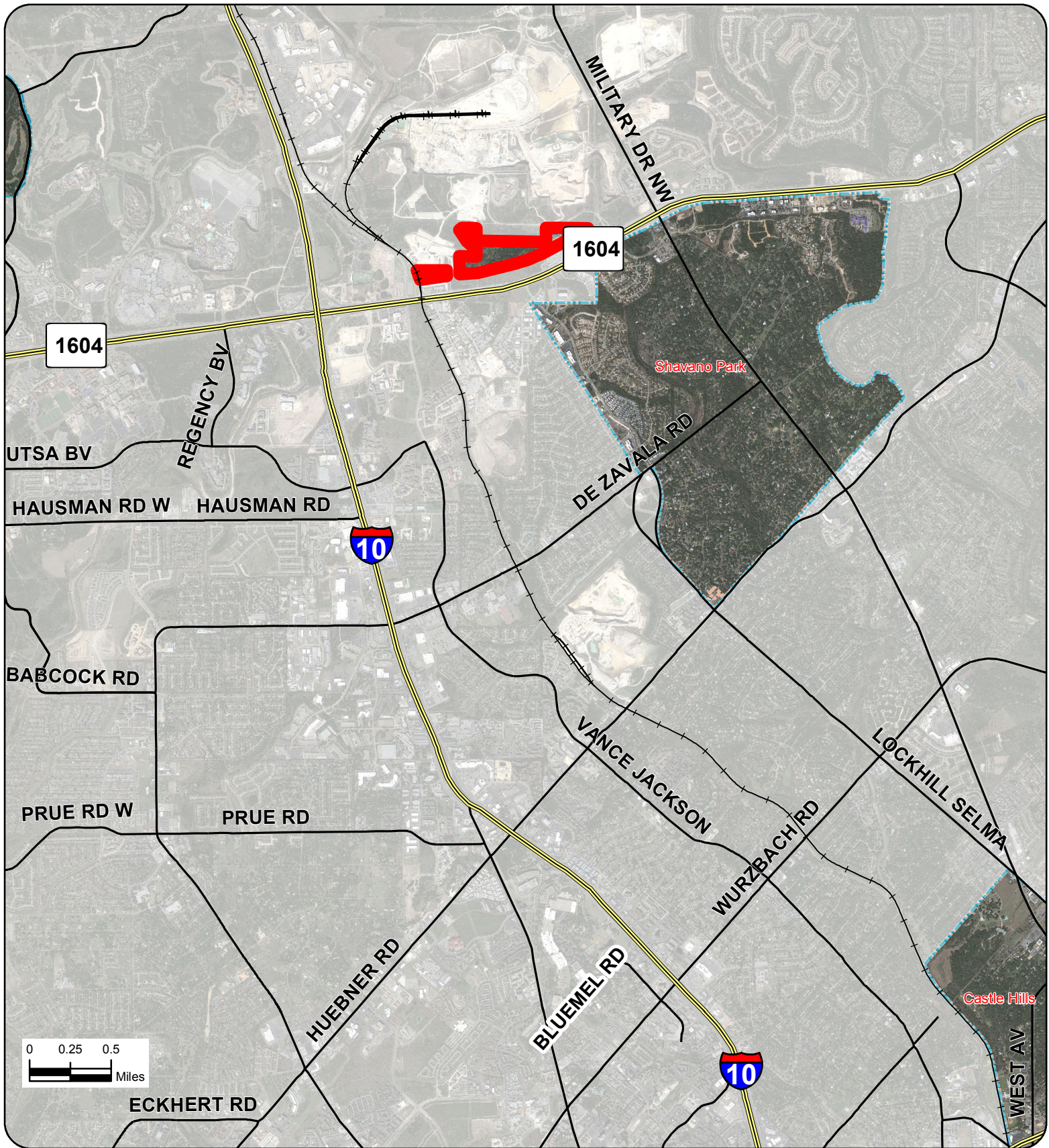
City of San Antonio Cities and Towns Military Bases



Proposed Annexation Babcock Road

City of San Antonio
Information Technology Services Department
GIS Public Services Division
Riverview Towers
111 Soledad St. 9th Floor
San Antonio, TX 78205





 City of San Antonio
 Cities and Towns
 Military Bases



Proposed Annexation Vance Jackson

City of San Antonio
 Information Technology Services Department
 GIS Public Services Division
 Riverview Towers
 111 Soledad St. 9th Floor
 San Antonio, TX 78205



Data Source: City of San Antonio Enterprise GIS, Bexar Metro 911, Bexar Appraisal District
 This document is informational. It is not intended to be used for legal purposes. It is not intended to be used for legal purposes. It is not intended to be used for legal purposes.
 Map Created by: gg01173
 Map Creation Date: 6/28/2017
 Map File location: W:\Projects\2017\Planning\Black&White\Proposed Annexation Aerial.mxd
 PDF Filename: 1612GG10.pdf



Data Source: City of San Antonio Enterprise GIS, Bear Metro 911, Bear Appraisal District
 This map was prepared by the City of San Antonio, Texas, for the purpose of providing information to the public. It is not intended to be used for any other purpose. The City of San Antonio, Texas, is not responsible for any errors or omissions in this map. The user assumes all responsibility for the use of this map.

Map Created by: gg01173
 Map Creation Date: 6/28/2017
 Map file location: W:\Projects\2017\Planning\Black&White\Proposed Annexation Aerial.mxd
 PDF Filename: 1612GG10.pdf

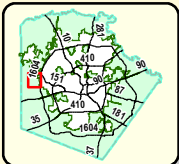
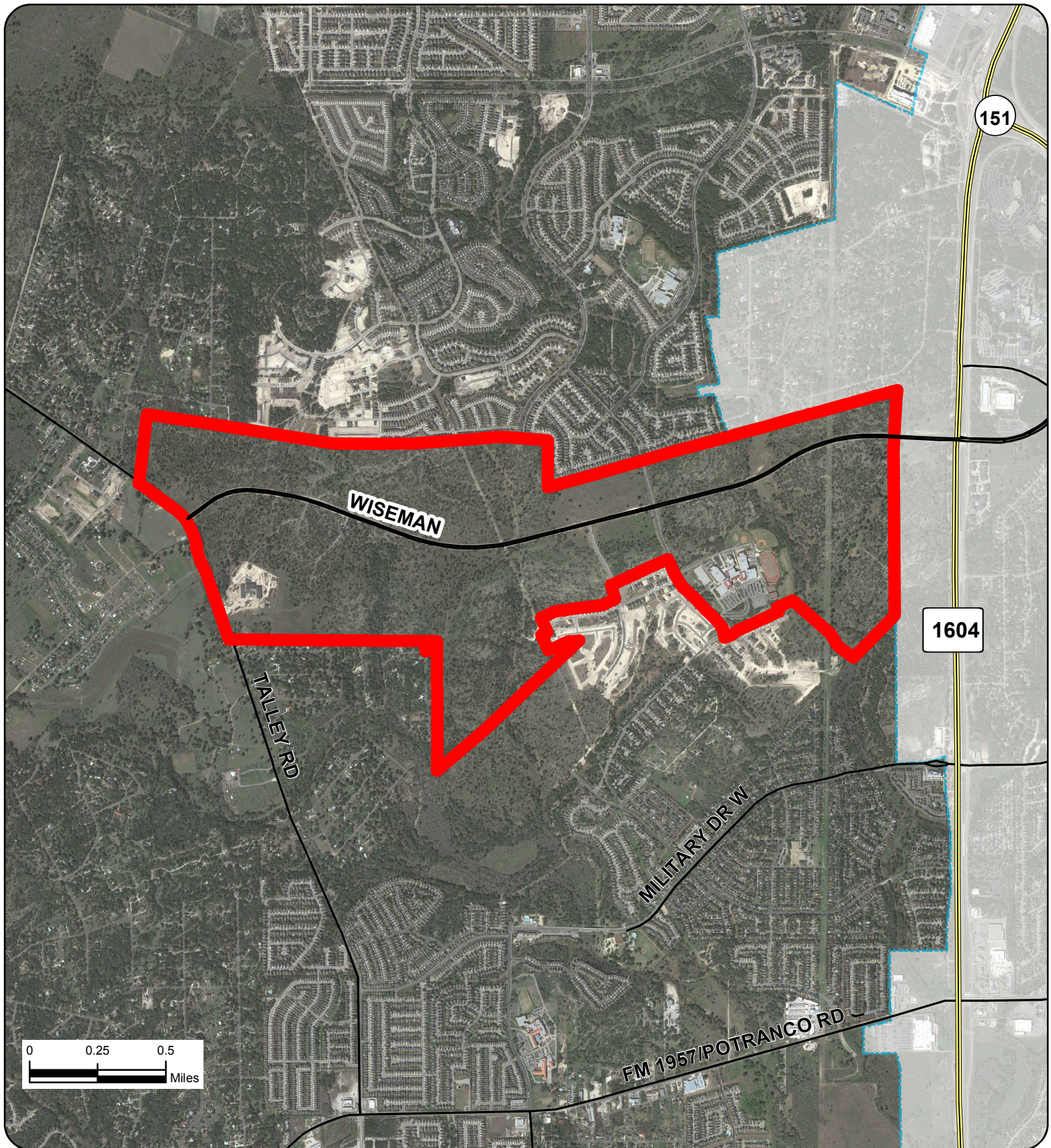
City of San Antonio Cities and Towns Military Bases



Proposed Annexation Culebra-Alamo Ranch

City of San Antonio
 Information Technology Services Department
 GIS Public Services Division
 Riverview Towers
 111 Soledad St. 9th Floor
 San Antonio, TX 78205





City of San Antonio



Cities and Towns



Military Bases



Proposed Annexation Wiseman Blvd

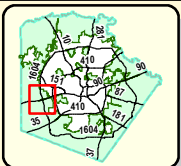
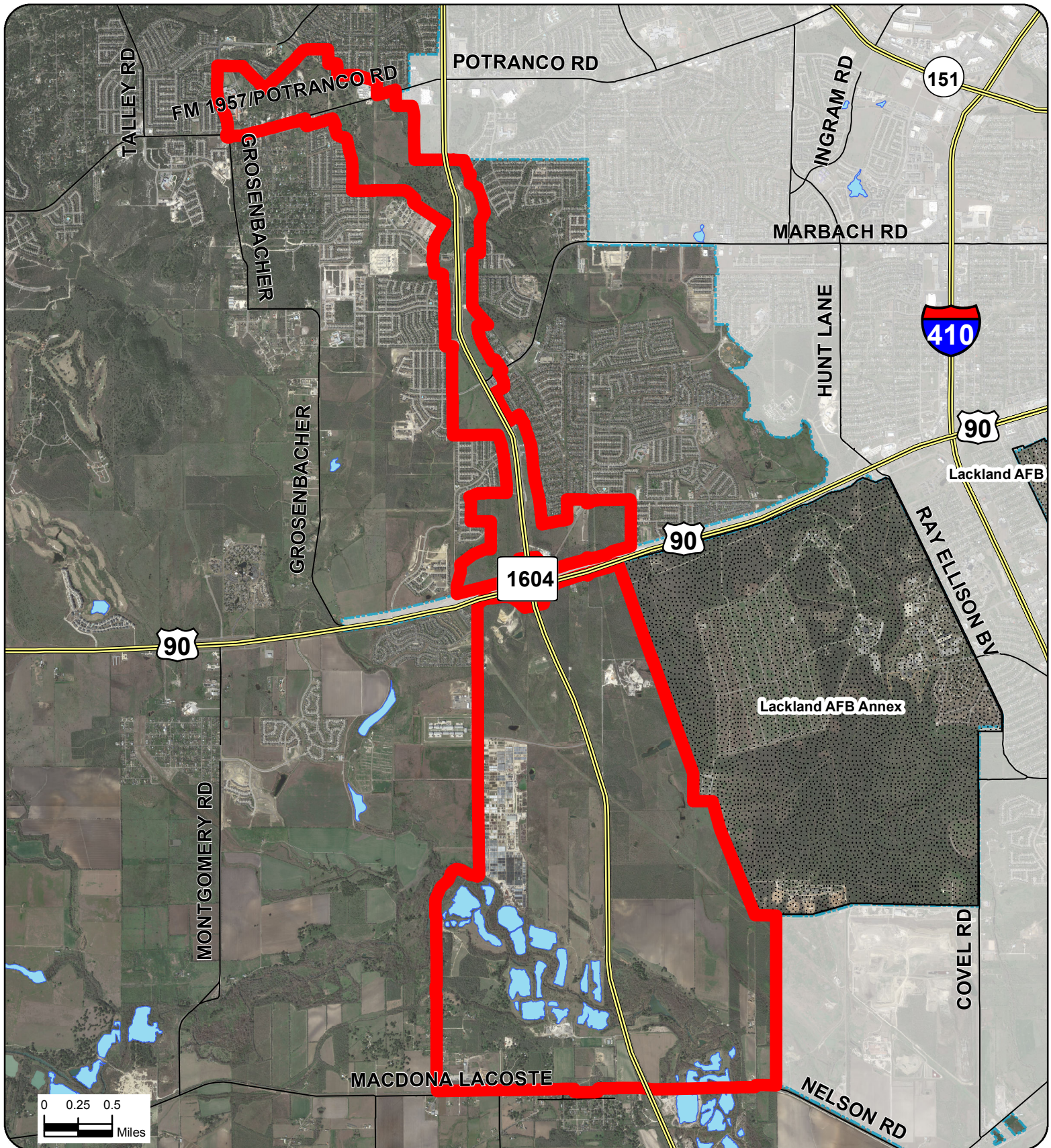
City of San Antonio
Information Technology Services Department
GIS Public Services Division

Riverview Towers
111 Soledad St. 9th Floor
San Antonio, TX 78205



Data Source: City of San Antonio Enterprise GIS, Bear Metro 911, Bear Appraisal District
This document is a map of the City of San Antonio, Texas, and is not intended to be used for any other purpose. The City of San Antonio is not responsible for any errors or omissions in this map. The City of San Antonio is not responsible for any damages or losses resulting from the use of this map. The City of San Antonio is not responsible for any claims or liabilities resulting from the use of this map. The City of San Antonio is not responsible for any claims or liabilities resulting from the use of this map.

Map Created by: gg01173
Map Creation Date: 6/28/2017
Map file location: W:\Projects2017\Planning\Black&White\Proposed Annexation Aerial.mxd
PDF Filename: 1612GG10.pdf



 City of San Antonio
 Cities and Towns
 Military Bases



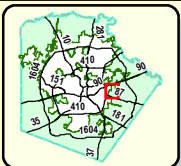
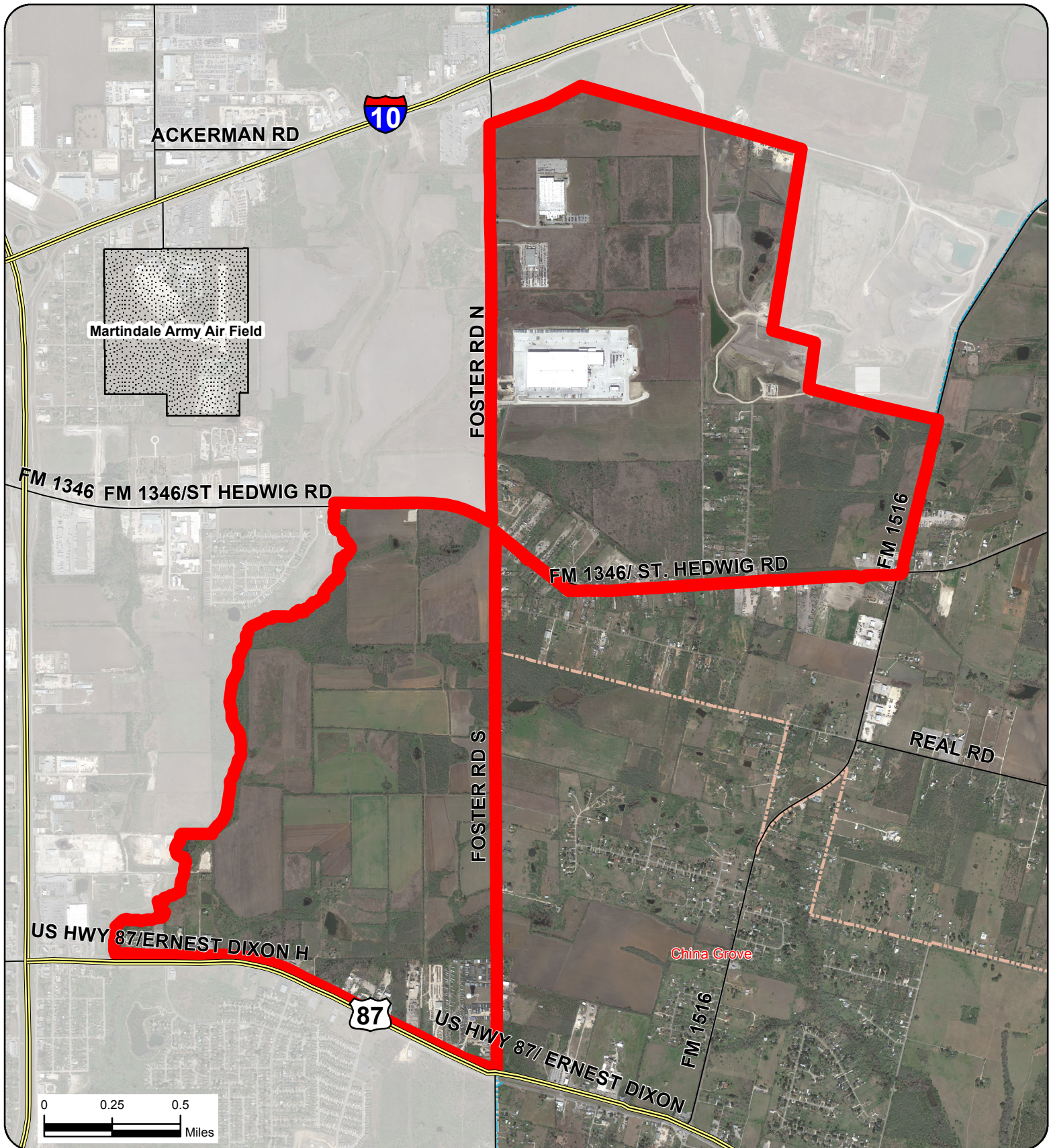
Proposed Annexation Loop 1604/Potranco Road

City of San Antonio
 Information Technology Services Department
 GIS Public Services Division
 Riverview Towers
 111 Soledad St. 9th Floor
 San Antonio, TX 78205



Data Source: City of San Antonio Enterprise GIS, Bexar Metro 911, Bexar Appraisal District
 This map was prepared by the City of San Antonio, Texas, for the purpose of providing information to the public. It is not intended to be used for any other purpose. The City of San Antonio, Texas, is not responsible for any errors or omissions in this map. The user assumes all responsibility for the results and any consequences of any information obtained from this map. The City of San Antonio, Texas, is not responsible for any errors or omissions in this map. The user assumes all responsibility for the results and any consequences of any information obtained from this map.

Map Created by: gg01173
 Map Creation Date: 6/28/2017
 Map file location: W:\Projects\2017\Planning\Black&White\Proposed Annexation Aerial.mxd
 PDF Filename: 1612GG10.pdf



Date Source: City of San Antonio Enterprise GIS, Bexar Metro 911, Bexar Appraisal District
 This document contains confidential information. It is not to be distributed outside the City of San Antonio. It is not to be used for any purpose other than the one for which it was prepared. It is not to be used for any purpose other than the one for which it was prepared. It is not to be used for any purpose other than the one for which it was prepared.

Map Created by: gg01173
 Map Creation Date: 6/28/2017
 Map file location: W:\Projects\2017\Planning\Black&White\Proposed Annexation Aerial.mxd
 PDF Filename: 1612GG10.pdf

City of San Antonio Cities and Towns Military Bases

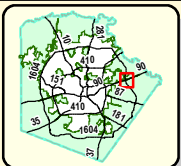


Proposed Annexation South Foster Road

City of San Antonio
 Information Technology Services Department
 GIS Public Services Division

Riverview Towers
 111 Soledad St. 9th Floor
 San Antonio, TX 78205





Data Source: City of San Antonio Enterprise GIS, Bear Metro 911, Bear Appraisal District
 This map is for informational purposes only. It is not intended to be used for legal or financial purposes. The City of San Antonio is not responsible for any errors or omissions in this map. The City of San Antonio is not responsible for any damages or losses resulting from the use of this map. The City of San Antonio is not responsible for any claims or liabilities resulting from the use of this map. The City of San Antonio is not responsible for any claims or liabilities resulting from the use of this map.

Map Created by: gg01173
 Map Creation Date: 6/28/2017
 Map File Location: W:\Projects\2017\Planning\Black&White\Proposed Annexation Aerial.mxd
 PDF File Name: 1612GG10.pdf

City of San Antonio Cities and Towns Military Bases



Proposed Annexation IH10/1604East

City of San Antonio
 Information Technology Services Department
 GIS Public Services Division
 Riverview Towers
 111 Soledad St. 9th Floor
 San Antonio, TX 78205



