

200' Notification Area

Proposed Community Commercial



Residential

Medium Density Residential

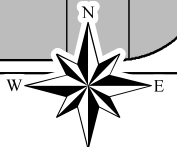


Neighborhood Commercial

Mixed Use



Public/ Institutional



0 75 150 Feet

Arena District/ Eastside Community Plan **Proposed Plan Amendment 17059 Area**

Data Source: City of San Antonio Enterprise GIS, Bexar Metro 911, Bexar Appraisal District
 "This Geographic Information System Product, received from The City of San Antonio is provided "as is" without warranty of any kind, and the City of San Antonio expressly disclaims all express and implied warranties, including but not limited to the implied warranties of merchantability and fitness for a particular purpose. The City of San Antonio does not warrant, guarantee, or make any representations regarding the use, or the results of the use, of the information provided to you by the City of San Antonio in terms of correctness, accuracy, reliability, timeliness or otherwise. The entire risk as to the results and performance of any information obtained from the City of San Antonio is entirely assumed by the recipient."
 *Please contact the responsible City of San Antonio Department for specific determinations.
 Maps may be ordered at: (210) 207-6301
 Map Created by: Gustavo Gutierrez
 Map Creation Date: 7/13/2017
 Map File Location: W:\Archived\Neighborhoods\Land_Use\Amendments\Amend_17059_ArenaDistrict_B&W.mxd
 PDF Filename: Amend_17059_ArenaDistrict_B&W.pdf

City of San Antonio
 Planning and Community
 Development Department
 John M. Dugan, AICP
 Director
 Cliff Morton Development and
 Business Services Center
 PO Box 839666
 San Antonio, TX 78283

