

A RESOLUTION **2017-06-29-0034R**

**DIRECTING THE DEPARTMENT OF PLANNING & COMMUNITY DEVELOPMENT TO PREPARE SERVICE PLANS FOR THE FOLLOWING ANNEXATION AREAS: A) IH 10 WEST COMMERCIAL CORRIDOR, (B) BABCOCK ROAD CORRIDOR, (C) CULEBRA ROAD – ALAMO RANCH CORRIDOR, (D) WISEMAN BOULEVARD CORRIDOR, (E) POTRANCO ROAD – WEST LOOP 1604 COMMERCIAL CORRIDORS (F) VANCE JACKSON – NORTH LOOP 1604 WEST TRACTS, (G) WEST BITTERS ROAD TRACTS, (H) FOSTER ROAD AREA, AND (I) IH 10 EAST – LOOP 1604 EAST INTERCHANGE AREA, TOTALING 19.96 SQUARE MILES, WHICH ARE CONTIGUOUS TO THE CITY OF SAN ANTONIO (COSA) LIMITS AND WITHIN THE SAN ANTONIO EXTRATERRITORIAL JURISDICTION (ETJ) IN BEXAR COUNTY.**

\* \* \* \* \*

**WHEREAS**, the proposed annexations are consistent with the City of San Antonio Annexation Policy adopted February 14, 2013 by which San Antonio considers annexation necessary for the City's protection of environmental or other resources; and

**WHEREAS**, the proposed annexation areas are exempt from inclusion into a Municipal Annexation Plan because each, respectively contains fewer than 100 separate tracts of land on which one or more residential dwellings are located; and

**WHEREAS**, the proposed annexation areas are contiguous to the City limits of San Antonio, and it is within San Antonio's ETJ; and

**WHEREAS**, City Council must direct its Planning Department to prepare a service plan prior to the publication of the notice of the first required public hearing, in accordance with Chapter 43 of the Texas Local Government Code; **NOW THEREFORE**,

**BE IT RESOLVED BY THE CITY COUNCIL OF THE CITY OF SAN ANTONIO;**

**SECTION 1.** The City Council hereby directs the Department of Planning & Community Development to prepare Service Plans for the following Annexation Areas: A) IH 10 West Commercial Corridor, (B) Babcock Road Corridor, (C) Culebra Road – Alamo Ranch Corridor, (D) Wiseman Boulevard Corridor, (E) Potranco Road – West Loop 1604 Commercial Corridors (F) Vance Jackson – North Loop 1604 West Tracts, (G) West Bitters Road Tracts, (H) Foster Road Area, and (I) IH 10 East – Loop 1604 East Interchange area, totaling 19.96 square miles, which are contiguous to the COSA limits and within the San Antonio ETJ in Bexar County. The proposed annexation areas are depicted in **EXHIBIT A**.


**SECTION 2.** This resolution shall be effective June 29, 2017.

**PASSED AND APPROVED** on this 29<sup>th</sup> day of June, 2017.



M A Y O R  
Ron Nirenberg

**ATTEST:**



Leticia M. Vacek, City Clerk

**APPROVED AS TO FORM:**



Andrew Segovia, City Attorney

for

<b>Agenda Item:</b>	<b>12</b>						
<b>Date:</b>	06/29/2017						
<b>Time:</b>	10:44:01 AM						
<b>Vote Type:</b>	Other: 12a						
<b>Description:</b>	A Resolution directing the Department of Planning & Community Development to prepare Service Plans for the following Annexation Areas: (A) IH 10 West Commercial Corridor, (B) Babcock Road Commercial Corridor, (C) Culebra Road - Alamo Ranch Commercial Corridor, (D) Wiseman Road Commercial Corridor, (E) Potranco Road - West Loop 1604 Commercial Corridors, (F) Vance Jackson - North Loop 1604 West Tracts, (G) West Bitters Road Tracts, (H) Foster Road Area and (I) IH 10 East - Loop 1604 East Interchange Area in Bexar County. [Peter Zanoni, Deputy City Manager; Bridgett White, Director, Planning & Community Development.]						
<b>Result:</b>	Passed						
<b>Voter</b>	<b>Group</b>	<b>Not Present</b>	<b>Yea</b>	<b>Nay</b>	<b>Abstain</b>	<b>Motion</b>	<b>Second</b>
Ron Nirenberg	Mayor		x				
Roberto C. Treviño	District 1		x				x
William Cruz Shaw	District 2		x				
Rebecca Viagran	District 3		x				
Rey Saldaña	District 4		x			x	
Shirley Gonzales	District 5		x				
Greg Brockhouse	District 6		x				
Ana E. Sandoval	District 7		x				
Manny Pelaez	District 8		x				
John Courage	District 9		x				
Clayton H. Perry	District 10		x				



<b>Agenda Item:</b>	<b>12</b>						
<b>Date:</b>	06/29/2017						
<b>Time:</b>	10:44:26 AM						
<b>Vote Type:</b>	Other: 12B						
<b>Description:</b>	A Resolution directing the Department of Planning & Community Development to prepare Service Plans for the following Annexation Areas: (A) IH 10 West Commercial Corridor, (B) Babcock Road Commercial Corridor, (C) Culebra Road - Alamo Ranch Commercial Corridor, (D) Wiseman Road Commercial Corridor, (E) Potranco Road - West Loop 1604 Commercial Corridors, (F) Vance Jackson - North Loop 1604 West Tracts, (G) West Bitters Road Tracts, (H) Foster Road Area and (I) IH 10 East - Loop 1604 East Interchange Area in Bexar County. [Peter Zanoni, Deputy City Manager; Bridgett White, Director, Planning & Community Development.]						
<b>Result:</b>	Passed						
<b>Voter</b>	<b>Group</b>	<b>Not Present</b>	<b>Yea</b>	<b>Nay</b>	<b>Abstain</b>	<b>Motion</b>	<b>Second</b>
Ron Nirenberg	Mayor		x				
Roberto C. Treviño	District 1		x				x
William Cruz Shaw	District 2		x				
Rebecca Viagran	District 3		x				
Rey Saldaña	District 4		x			x	
Shirley Gonzales	District 5		x				
Greg Brockhouse	District 6		x				
Ana E. Sandoval	District 7		x				
Manny Pelaez	District 8		x				
John Courage	District 9		x				
Clayton H. Perry	District 10		x				

<b>Agenda Item:</b>	<b>12</b>						
<b>Date:</b>	06/29/2017						
<b>Time:</b>	10:44:49 AM						
<b>Vote Type:</b>	Other: 12C						
<b>Description:</b>	A Resolution directing the Department of Planning & Community Development to prepare Service Plans for the following Annexation Areas: (A) IH 10 West Commercial Corridor, (B) Babcock Road Commercial Corridor, (C) Culebra Road - Alamo Ranch Commercial Corridor, (D) Wiseman Road Commercial Corridor, (E) Potranco Road - West Loop 1604 Commercial Corridors, (F) Vance Jackson - North Loop 1604 West Tracts, (G) West Bitters Road Tracts, (H) Foster Road Area and (I) IH 10 East - Loop 1604 East Interchange Area in Bexar County. [Peter Zanoni, Deputy City Manager; Bridgett White, Director, Planning & Community Development.]						
<b>Result:</b>	Passed						
<b>Voter</b>	<b>Group</b>	<b>Not Present</b>	<b>Yea</b>	<b>Nay</b>	<b>Abstain</b>	<b>Motion</b>	<b>Second</b>
Ron Nirenberg	Mayor		x				
Roberto C. Treviño	District 1		x				x
William Cruz Shaw	District 2		x				
Rebecca Viagran	District 3		x				
Rey Saldaña	District 4		x			x	
Shirley Gonzales	District 5		x				
Greg Brockhouse	District 6		x				
Ana E. Sandoval	District 7		x				
Manny Pelaez	District 8		x				
John Courage	District 9		x				
Clayton H. Perry	District 10		x				

<b>Agenda Item:</b>	<b>12</b>						
<b>Date:</b>	06/29/2017						
<b>Time:</b>	10:45:09 AM						
<b>Vote Type:</b>	Other: 12D						
<b>Description:</b>	A Resolution directing the Department of Planning & Community Development to prepare Service Plans for the following Annexation Areas: (A) IH 10 West Commercial Corridor, (B) Babcock Road Commercial Corridor, (C) Culebra Road - Alamo Ranch Commercial Corridor, (D) Wiseman Road Commercial Corridor, (E) Potranco Road - West Loop 1604 Commercial Corridors, (F) Vance Jackson - North Loop 1604 West Tracts, (G) West Bitters Road Tracts, (H) Foster Road Area and (I) IH 10 East - Loop 1604 East Interchange Area in Bexar County. [Peter Zaroni, Deputy City Manager; Bridgett White, Director, Planning & Community Development.]						
<b>Result:</b>	Passed						
<b>Voter</b>	<b>Group</b>	<b>Not Present</b>	<b>Yea</b>	<b>Nay</b>	<b>Abstain</b>	<b>Motion</b>	<b>Second</b>
Ron Nirenberg	Mayor		x				
Roberto C. Treviño	District 1		x				x
William Cruz Shaw	District 2		x				
Rebecca Viagran	District 3		x				
Rey Saldaña	District 4		x			x	
Shirley Gonzales	District 5		x				
Greg Brockhouse	District 6		x				
Ana E. Sandoval	District 7		x				
Manny Pelaez	District 8		x				
John Courage	District 9		x				
Clayton H. Perry	District 10		x				

<b>Agenda Item:</b>	<b>12</b>						
<b>Date:</b>	06/29/2017						
<b>Time:</b>	10:45:29 AM						
<b>Vote Type:</b>	Other: 12E						
<b>Description:</b>	A Resolution directing the Department of Planning & Community Development to prepare Service Plans for the following Annexation Areas: (A) IH 10 West Commercial Corridor, (B) Babcock Road Commercial Corridor, (C) Culebra Road - Alamo Ranch Commercial Corridor, (D) Wiseman Road Commercial Corridor, (E) Potranco Road - West Loop 1604 Commercial Corridors, (F) Vance Jackson - North Loop 1604 West Tracts, (G) West Bitters Road Tracts, (H) Foster Road Area and (I) IH 10 East - Loop 1604 East Interchange Area in Bexar County. [Peter Zanoni, Deputy City Manager; Bridgett White, Director, Planning & Community Development.]						
<b>Result:</b>	Passed						
<b>Voter</b>	<b>Group</b>	<b>Not Present</b>	<b>Yea</b>	<b>Nay</b>	<b>Abstain</b>	<b>Motion</b>	<b>Second</b>
Ron Nirenberg	Mayor		x				
Roberto C. Treviño	District 1		x				
William Cruz Shaw	District 2		x				
Rebecca Viagran	District 3		x				x
Rey Saldaña	District 4		x			x	
Shirley Gonzales	District 5		x				
Greg Brockhouse	District 6		x				
Ana E. Sandoval	District 7		x				
Manny Pelaez	District 8		x				
John Courage	District 9		x				
Clayton H. Perry	District 10		x				

<b>Agenda Item:</b>	<b>12</b>						
<b>Date:</b>	06/29/2017						
<b>Time:</b>	10:46:02 AM						
<b>Vote Type:</b>	Other: 12F						
<b>Description:</b>	A Resolution directing the Department of Planning & Community Development to prepare Service Plans for the following Annexation Areas: (A) IH 10 West Commercial Corridor, (B) Babcock Road Commercial Corridor, (C) Culebra Road - Alamo Ranch Commercial Corridor, (D) Wiseman Road Commercial Corridor, (E) Potranco Road - West Loop 1604 Commercial Corridors, (F) Vance Jackson - North Loop 1604 West Tracts, (G) West Bitters Road Tracts, (H) Foster Road Area and (I) IH 10 East - Loop 1604 East Interchange Area in Bexar County. [Peter Zanoni, Deputy City Manager; Bridgett White, Director, Planning & Community Development.]						
<b>Result:</b>	Passed						
<b>Voter</b>	<b>Group</b>	<b>Not Present</b>	<b>Yea</b>	<b>Nay</b>	<b>Abstain</b>	<b>Motion</b>	<b>Second</b>
Ron Nirenberg	Mayor		x				
Roberto C. Treviño	District 1		x				x
William Cruz Shaw	District 2		x				
Rebecca Viagran	District 3		x				
Rey Saldaña	District 4		x			x	
Shirley Gonzales	District 5		x				
Greg Brockhouse	District 6		x				
Ana E. Sandoval	District 7		x				
Manny Pelaez	District 8		x				
John Courage	District 9		x				
Clayton H. Perry	District 10		x				



<b>Agenda Item:</b>	<b>12</b>						
<b>Date:</b>	06/29/2017						
<b>Time:</b>	10:46:24 AM						
<b>Vote Type:</b>	Other: 12G						
<b>Description:</b>	A Resolution directing the Department of Planning & Community Development to prepare Service Plans for the following Annexation Areas: (A) IH 10 West Commercial Corridor, (B) Babcock Road Commercial Corridor, (C) Culebra Road - Alamo Ranch Commercial Corridor, (D) Wiseman Road Commercial Corridor, (E) Potranco Road - West Loop 1604 Commercial Corridors, (F) Vance Jackson - North Loop 1604 West Tracts, (G) West Bitters Road Tracts, (H) Foster Road Area and (I) IH 10 East - Loop 1604 East Interchange Area in Bexar County. [Peter Zanon, Deputy City Manager; Bridgett White, Director, Planning & Community Development.]						
<b>Result:</b>	Passed						
<b>Voter</b>	<b>Group</b>	<b>Not Present</b>	<b>Yea</b>	<b>Nay</b>	<b>Abstain</b>	<b>Motion</b>	<b>Second</b>
Ron Nirenberg	Mayor		x				
Roberto C. Treviño	District 1		x				x
William Cruz Shaw	District 2		x				
Rebecca Viagran	District 3		x				
Rey Saldaña	District 4		x			x	
Shirley Gonzales	District 5		x				
Greg Brockhouse	District 6		x				
Ana E. Sandoval	District 7		x				
Manny Pelaez	District 8		x				
John Courage	District 9		x				
Clayton H. Perry	District 10		x				

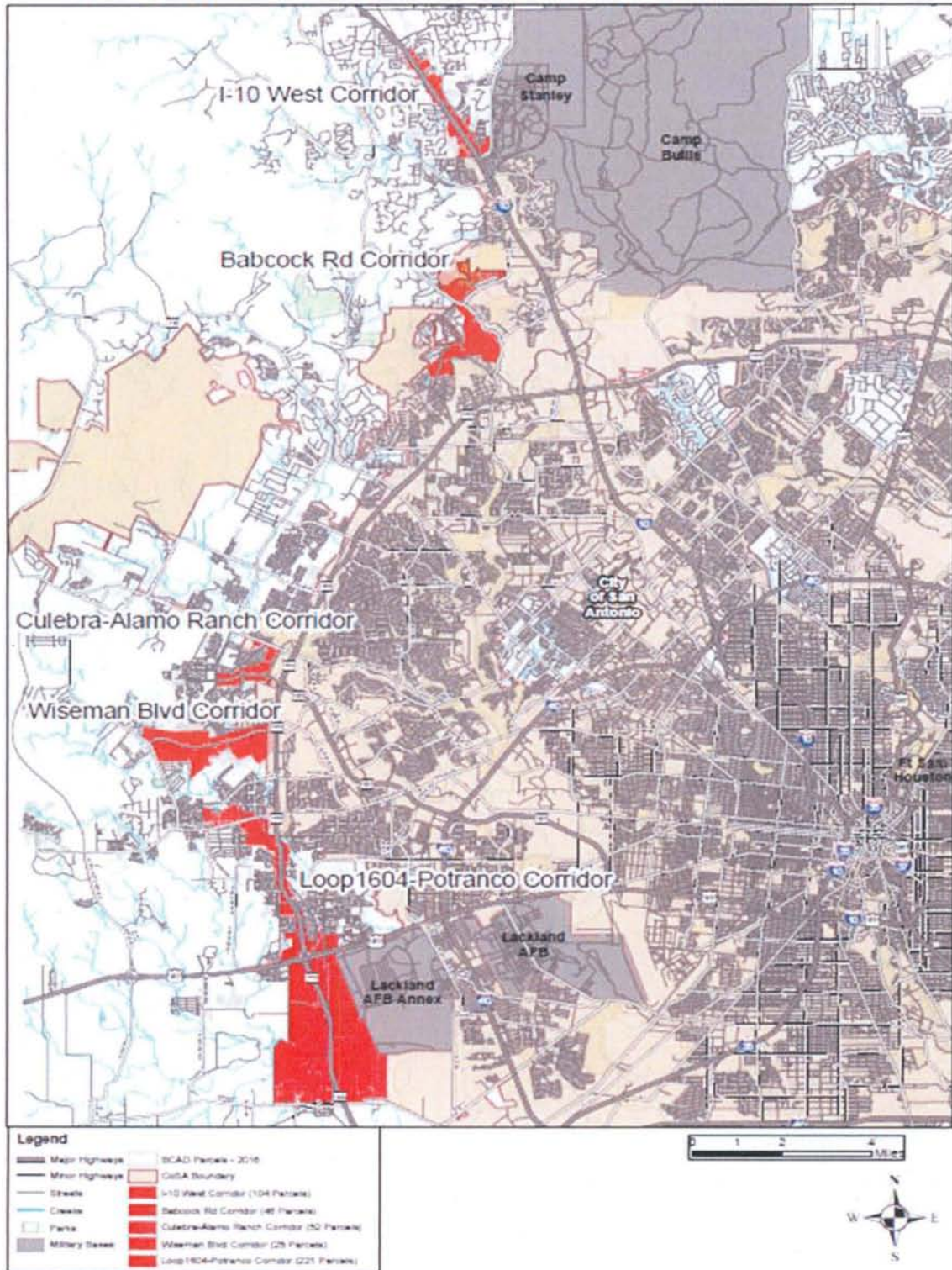
<b>Agenda Item:</b>	<b>12</b>						
<b>Date:</b>	06/29/2017						
<b>Time:</b>	10:46:48 AM						
<b>Vote Type:</b>	Other: 12H						
<b>Description:</b>	A Resolution directing the Department of Planning & Community Development to prepare Service Plans for the following Annexation Areas: (A) IH 10 West Commercial Corridor, (B) Babcock Road Commercial Corridor, (C) Culebra Road - Alamo Ranch Commercial Corridor, (D) Wiseman Road Commercial Corridor, (E) Potranco Road - West Loop 1604 Commercial Corridors, (F) Vance Jackson - North Loop 1604 West Tracts, (G) West Bitters Road Tracts, (H) Foster Road Area and (I) IH 10 East - Loop 1604 East Interchange Area in Bexar County. [Peter Zanoni, Deputy City Manager; Bridgett White, Director, Planning & Community Development.]						
<b>Result:</b>	Passed						
<b>Voter</b>	<b>Group</b>	<b>Not Present</b>	<b>Yea</b>	<b>Nay</b>	<b>Abstain</b>	<b>Motion</b>	<b>Second</b>
Ron Nirenberg	Mayor		x				
Roberto C. Treviño	District 1		x				x
William Cruz Shaw	District 2		x				
Rebecca Viagran	District 3		x				
Rey Saldaña	District 4		x			x	
Shirley Gonzales	District 5		x				
Greg Brockhouse	District 6		x				
Ana E. Sandoval	District 7		x				
Manny Pelaez	District 8		x				
John Courage	District 9		x				
Clayton H. Perry	District 10		x				

<b>Agenda Item:</b>	<b>12</b>						
<b>Date:</b>	06/29/2017						
<b>Time:</b>	10:47:07 AM						
<b>Vote Type:</b>	Other: 12I						
<b>Description:</b>	A Resolution directing the Department of Planning & Community Development to prepare Service Plans for the following Annexation Areas: (A) IH 10 West Commercial Corridor, (B) Babcock Road Commercial Corridor, (C) Culebra Road - Alamo Ranch Commercial Corridor, (D) Wiseman Road Commercial Corridor, (E) Potranco Road - West Loop 1604 Commercial Corridors, (F) Vance Jackson - North Loop 1604 West Tracts, (G) West Bitters Road Tracts, (H) Foster Road Area and (I) IH 10 East - Loop 1604 East Interchange Area in Bexar County. [Peter Zanoni, Deputy City Manager; Bridgett White, Director, Planning & Community Development.]						
<b>Result:</b>	Passed						
<b>Voter</b>	<b>Group</b>	<b>Not Present</b>	<b>Yea</b>	<b>Nay</b>	<b>Abstain</b>	<b>Motion</b>	<b>Second</b>
Ron Nirenberg	Mayor		x				
Roberto C. Treviño	District 1		x				x
William Cruz Shaw	District 2		x				
Rebecca Viagran	District 3		x				
Rey Saldaña	District 4		x			x	
Shirley Gonzales	District 5		x				
Greg Brockhouse	District 6		x				
Ana E. Sandoval	District 7		x				
Manny Pelaez	District 8		x				
John Courage	District 9		x				
Clayton H. Perry	District 10		x				



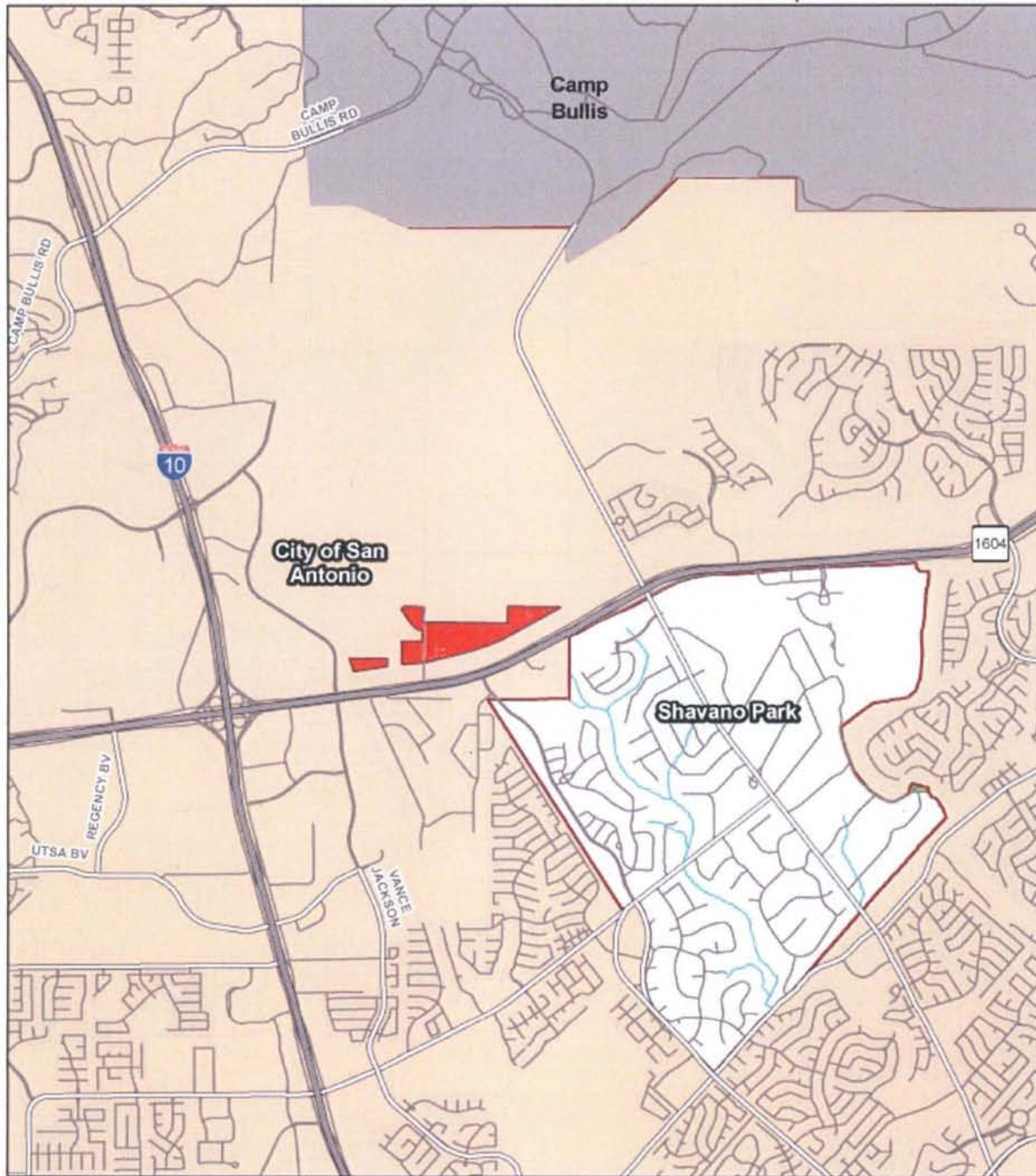
# EXHIBIT A

## I-10 WEST/WESTERN PROPOSED ANNEXATION CORRIDORS





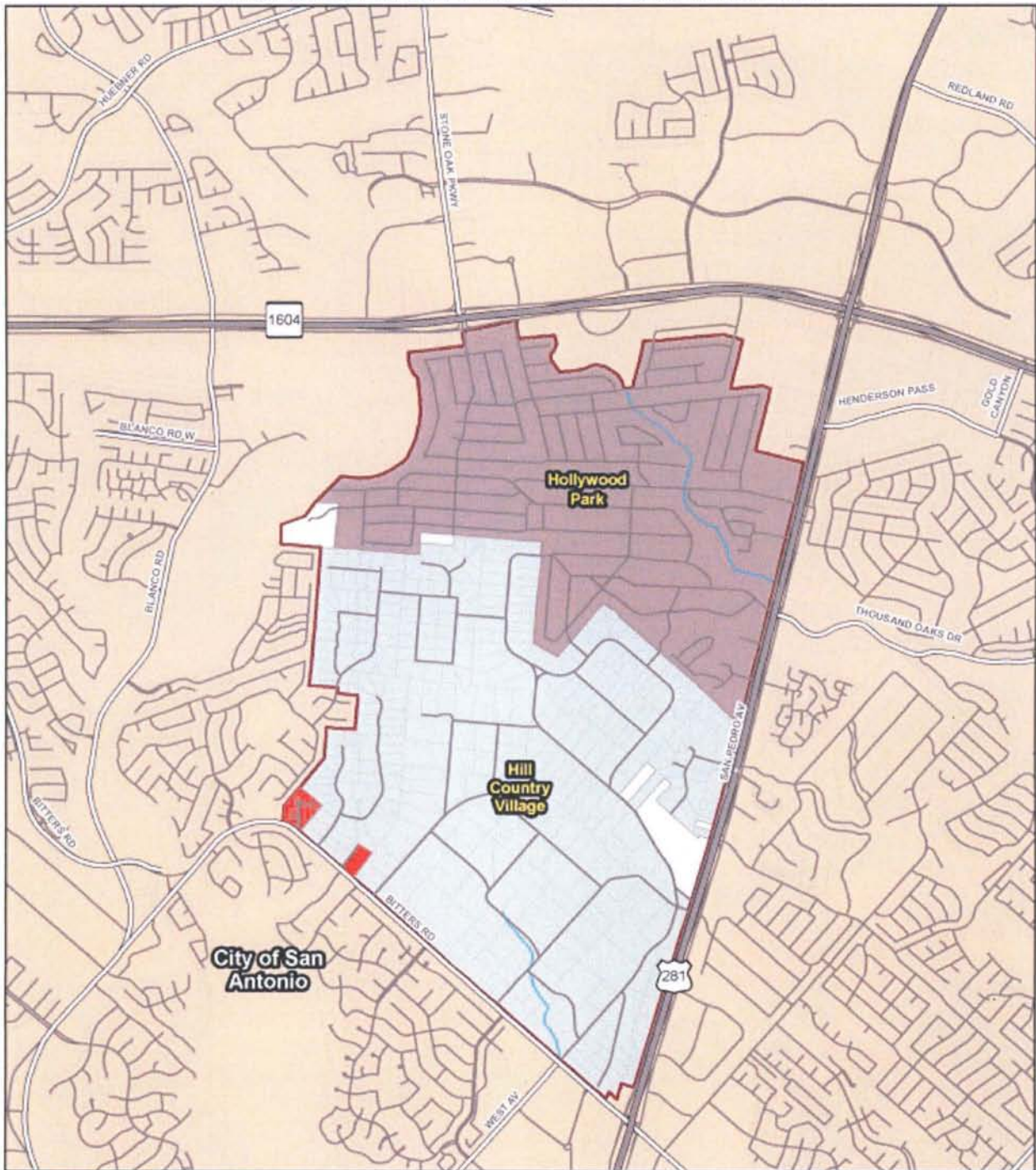
PROPOSED ANNEXATION AREAS - Vance Jackson Rd-Loop 1604 Area



**Proposed Annexation Areas**  
**Vance Jackson Rd N- Loop 1604 W**



# PROPOSED ANNEXATION AREAS - Bitters Road Area



Legend	
	Major Highways
	Minor Highways
	Streets
	Creeks
	Parks
	Military Bases
	BCAD Parcels - 2016
	CoSA Boundary
	US 281N-Bitters Rd Parcels











0 0.175 0.35 0.7 Miles

## Proposed Annexation Areas West Bitters Rd Area



South Foster Road Area



	Major Highways		BCAD Parcels - 2016
	Minor Highways		CoSA Boundary
	Streets		NE I-410-US57 Parcels
	Creeks		SE I-10-Foster Rd Parcels
	Parks		
	Military Bases		

## Proposed Annexation Areas

### Foster Rd Area



IH10 East-Loop 1604 East Interchange

