

- | | | | |
|-------------------|--------------------|-----------------|-------------------|
| Agribusiness Tier | Country Tier | Natural Tier | Rural Estate Tier |
| Civic Center | General Urban Tier | Regional Center | Suburban Tier |



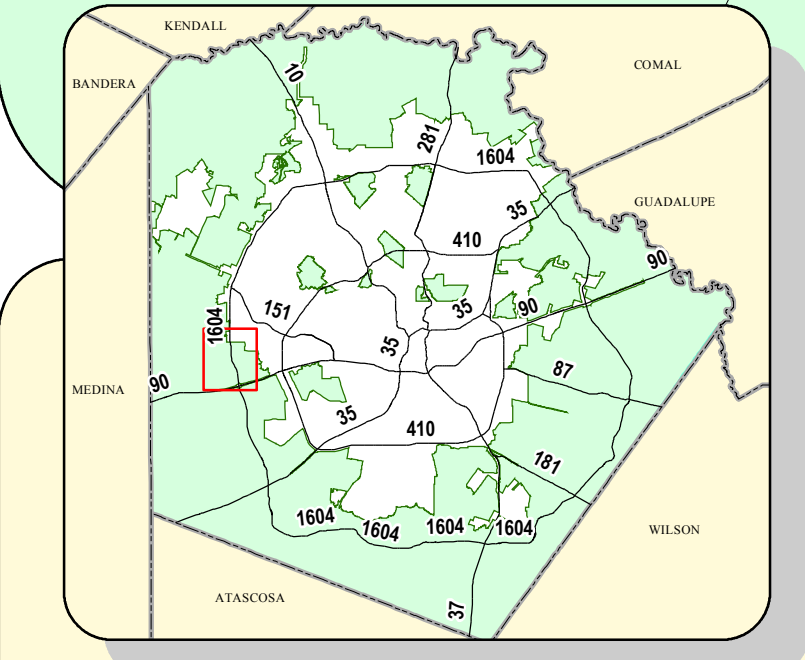
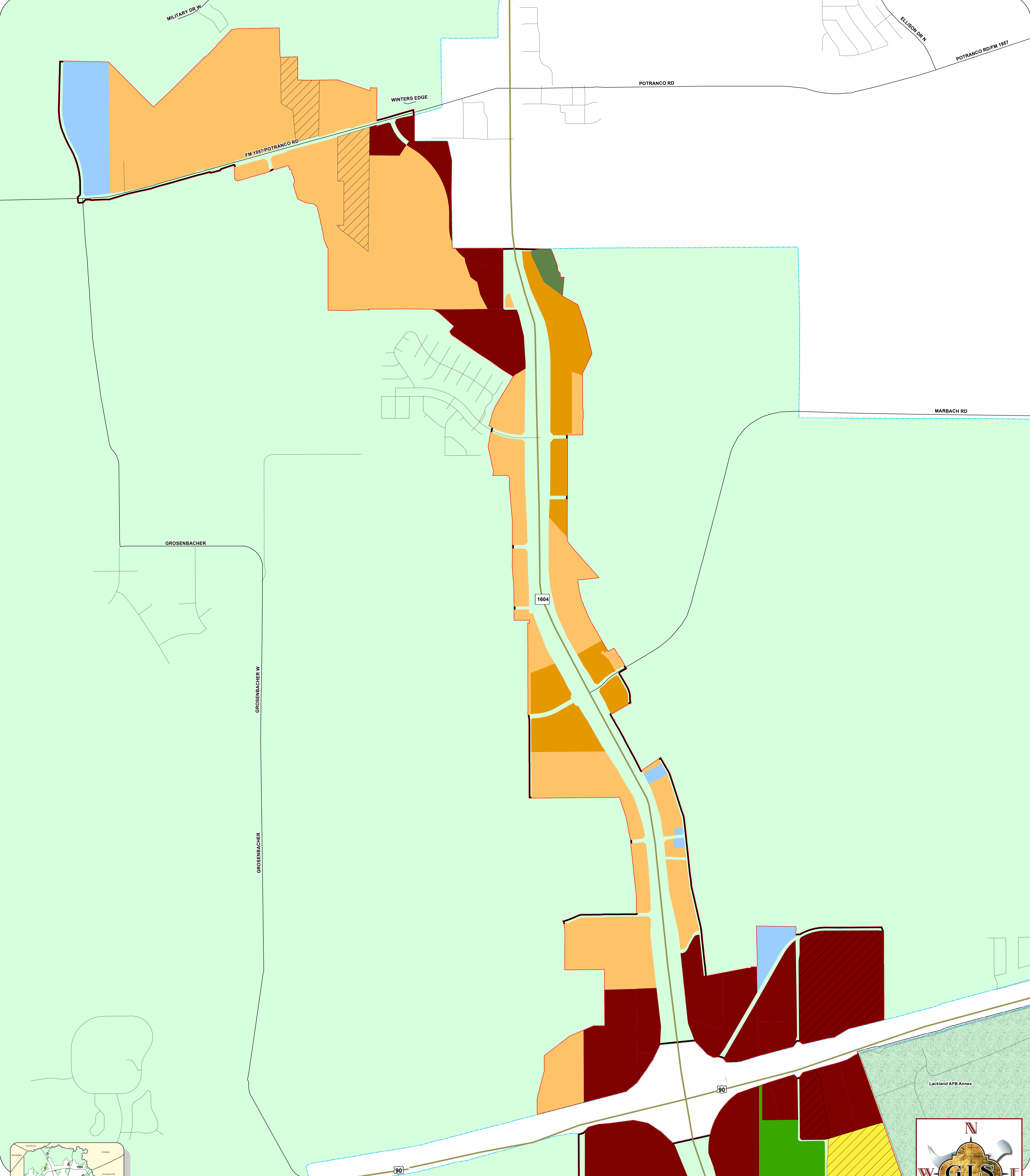
Data Source: City of San Antonio Enterprise GIS, Bexar Metro 911, Bexar Appraisal District
 "This Geographic Information System Product, received from the City of San Antonio, is provided 'as is' without warranty of any kind, and the City of San Antonio expressly disclaims all express and implied warranties, including but not limited to the implied warranties of merchantability and fitness for a particular purpose. The City of San Antonio does not warrant, guarantee, or make any representations regarding the use, or the results of the use, of the information provided to you by the City of San Antonio in terms of completeness, accuracy, reliability, timeliness or otherwise. The entire risk as to the results and performance of any information obtained from the City of San Antonio is hereby assumed by the recipient."
 Please contact the responsible City of San Antonio Department for specific determinations.
 Maps may be ordered at: (210) 207-7933

Map Path: Y:\common\imac29\GIS\Pin50\plan_jib\Projects2017\DSO\Proposed Annexation Land Use\Potranco_Proposed_LU_08042017.mxd
 Date/Time Saved: 08/04/17 at 4:32:54 PM
 PDF Filename: Potranco_Proposed_LU_08042017.pdf

2017 City of San Antonio Potranco Adopted Land Use

City of San Antonio
 Information Technology Services Department
 GIS Public Service Unit
 Riverview Towers
 111 Soledad St, 9th Floor, Suite 900
 San Antonio, TX 78205





Data Source: City of San Antonio Enterprise GIS, Bexar Metro 911, Bexar Appraisal District

The Geographic Information System Product, received from The City of San Antonio is provided "as is" without warranty of any kind, and the City of San Antonio expressly disclaims all express and implied warranties, including but not limited to the implied warranties of merchantability and fitness for a particular purpose. The City of San Antonio does not warrant, guarantee, or make any representations regarding the use, or the results of the use, of the information provided to you by the City of San Antonio in terms of correctness, accuracy, reliability, timeliness or otherwise. The entire risk as to the results and performance of any information obtained from the City of San Antonio is entirely assumed by the recipient.

Please contact the responsible City of San Antonio Department for specific determinations.










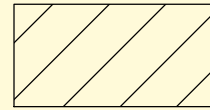
Maps may be ordered at: (210) 207-7933

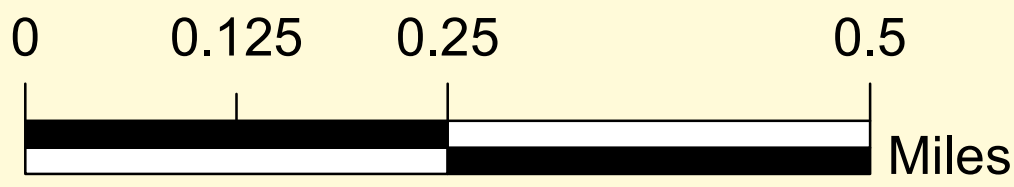
Map Created by: dm09584

Map Creation Date: 08/18/17

PDF Filename: \\H 10 E/Loop 1604 Proposed Zoning

Map file location: \\fsccommon\misc29\GIS\Pln50\plan_lib\Projects2017\DSD\Proposed Annexation Land Use\ProposedAnnex_PotrancoNorth_Landuse_08182017.mxd

- | | | | | |
|-------------------------------------------------------------------------------------------------------|--------------------------------------------------------------------------------------------------------|--------------------------------------------------------------------------------------------------------|---------------------------------------------------------------------------------------------------------|---------------------------------------------------------------------------------------------------------------|
|  Agribusiness Tier |  Country Tier |  Mixed Use Center |  Regional Center |  Suburban Tier |
|  Civic Center |  General Urban Tier |  Natural Tier |  Rural Estate Tier |  Agricultural Agreements |



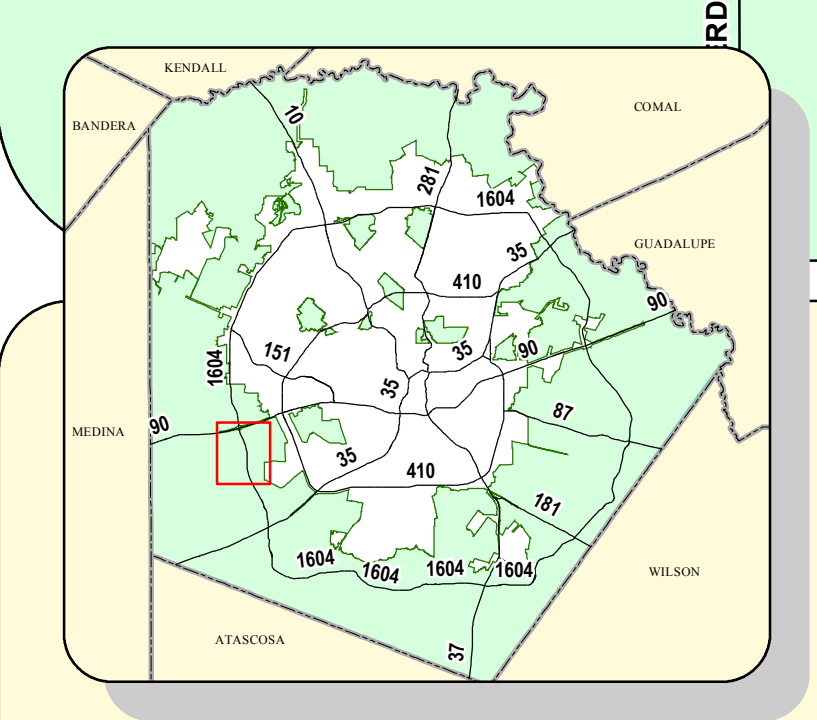
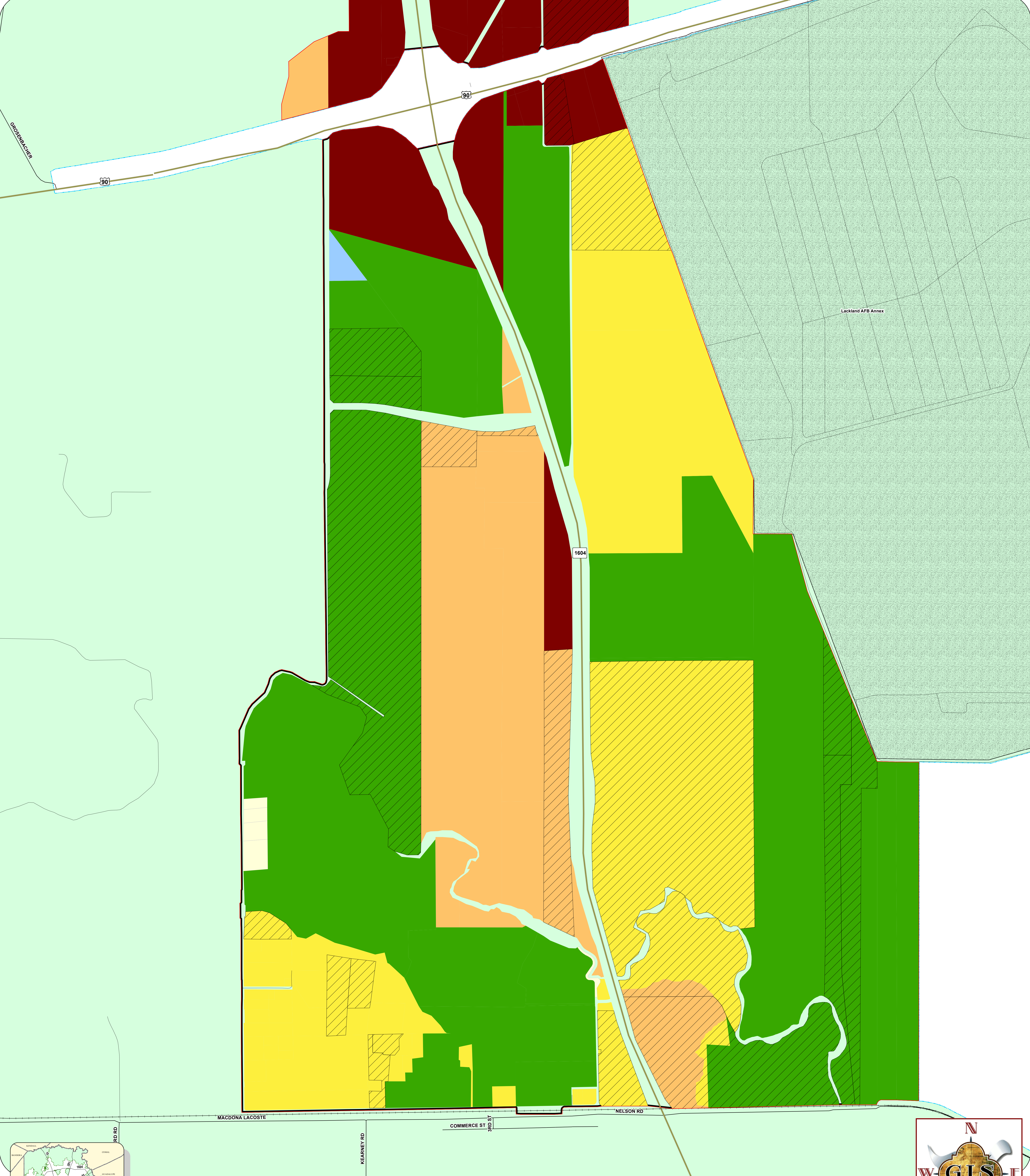
City of San Antonio 2017

Loop 1604/Potranco Road Annexation Area - North

Proposed Land Use

For Illustrative Purposes Only

City of San Antonio
Information Technology Services Department
GIS Public Services Division
Riverview Towers
111 Soledad St. 9th Floor
San Antonio, TX 78205



- | | | | | |
|-------------------|--------------------|------------------|-------------------|-------------------------|
| Agribusiness Tier | Country Tier | Mixed Use Center | Regional Center | Suburban Tier |
| Civic Center | General Urban Tier | Natural Tier | Rural Estate Tier | Agricultural Agreements |



Data Source: City of San Antonio Enterprise GIS, Bexar Metro 911, Bexar Appraisal District

The Geographic Information System Product, received from The City of San Antonio is provided "as is" without warranty of any kind, and the City of San Antonio expressly disclaims all express and implied warranties, including but not limited to the implied warranties of merchantability and fitness for a particular purpose. The City of San Antonio does not warrant, guarantee, or make any representations regarding the use, or the results of the use, of the information provided to you by the City of San Antonio in terms of correctness, accuracy, reliability, timeliness or otherwise. The entire risk as to the results and performance of any information obtained from the City of San Antonio is entirely assumed by the recipient.

Please contact the responsible City of San Antonio Department for specific determinations.

Maps may be ordered at: (210) 207-7933

Map Created by: dm09584

Map Creation Date: 08/18/17

PDF Filename: IH 10 E/Loop 1604 Proposed Zoning

Map file location: \\fsccommon\\misc29\\GIS\\Pln50\\plan_lib\\Projects2017\\DSD\\Proposed Annexation Land Use\\ProposedAnnex_PotrancoSouth_Landuse_08182017.mxd

City of San Antonio 2017

Loop 1604/Potranco Road Annexation Area - South

Proposed Land Use

For Illustrative Purposes Only

City of San Antonio
Information Technology Services Department
GIS Public Services Division
Riverview Towers
111 Soledad St. 9th Floor
San Antonio, TX 78205