

# *Resilience 101*

Community Health and Equity Committee

Item 2

November 7, 2017

Presented by:

**Douglas Melnick, AICP, ISSP-SA, CNU-A**  
**Chief Sustainability Officer**  
**Office of Sustainability**

# What is Resilience?

Resilience is about **surviving and thriving**, regardless of the challenge.

- Climate Resilience
- Economic Resilience
- Cyber Resilience
- Individual Resilience
- Neighborhood Resilience
- Urban Resilience



# What is Urban Resilience?

**URBAN RESILIENCE** is the capacity of individuals, communities, institutions, businesses, and systems within a city to survive, adapt, and grow no matter what kinds of chronic stresses and acute shocks they experience.

**CHRONIC STRESSES** weaken the fabric of a city on a day-to-day or cyclical basis.

Examples include: high unemployment, inefficient public transportation systems, endemic violence, and chronic food and water shortages.

**ACUTE SHOCKS** are sudden, sharp events that threaten a city.

Examples include: tornadoes, floods, disease outbreaks, extreme heat, and terrorist attacks.

# Resilient City Qualities?



## **Reflective**

Using past experience to inform future decisions



## **Resourceful**

Recognizing alternative ways to use resources



## **Robust**

Well-conceived, constructed, and managed systems



## **Redundant**

Spare capacity purposively created to accommodate disruption



## **Flexible**

Willingness and ability to adopt alternative strategies in response to changing circumstances



## **Inclusive**

Prioritize broad consultation to create a sense of shared ownership in decision-making



## **Integrated**

Bring together a range of distinct systems and institutions



# 100 Resilient Cities – North America

SPONSORED BY THE  
ROCKEFELLER FOUNDATION

100

RESILIENT

CITIES



# Resilient Dallas

In 2015, the City of Dallas was selected to participate in the 100RC program.

## Chronic Stresses:

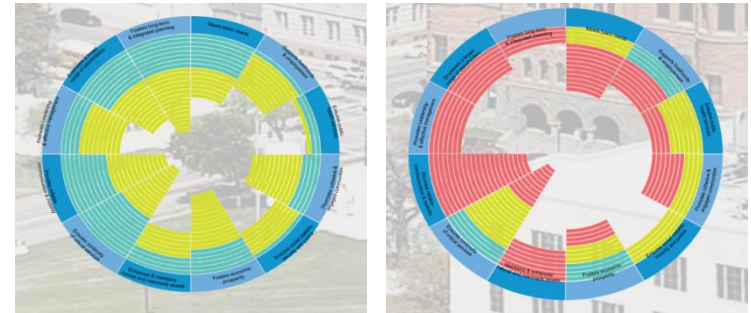
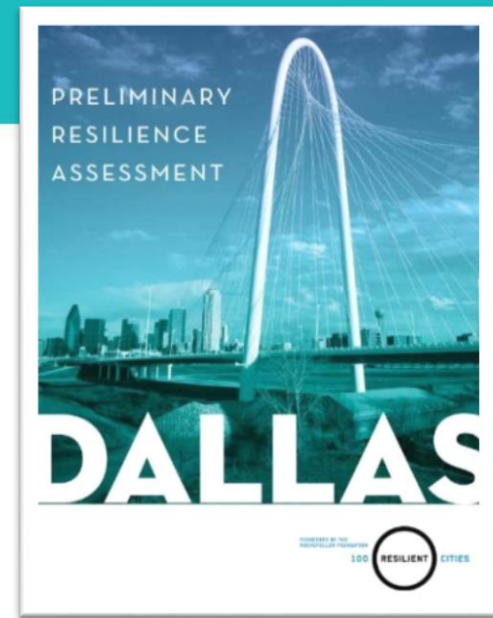
- Social equity/ Poverty imbalance
- Transportation Inequity
- Regionalism versus Urbanism
- Workforce and employment concentration

## Acute Shocks:

- Hail, flooding, tornadoes, earthquakes
- Infrastructure failure
- Civil unrest and violence

## 100RC Phases

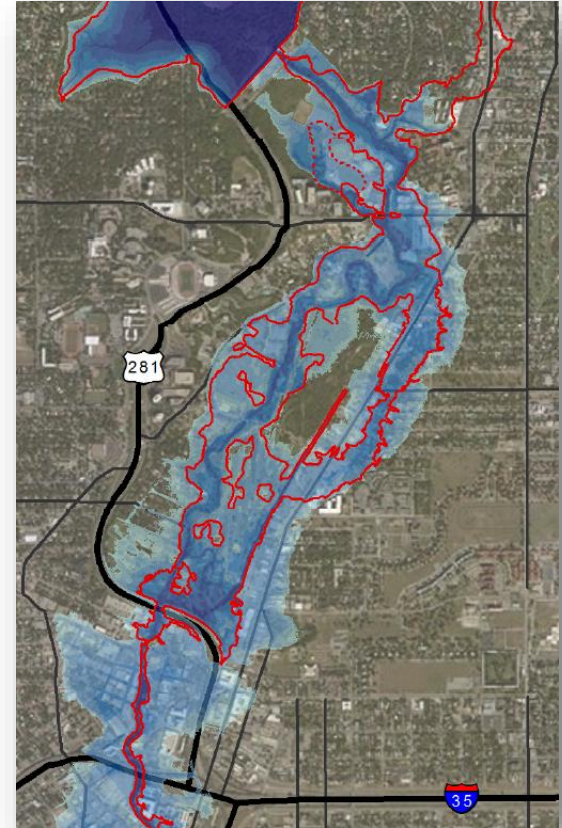
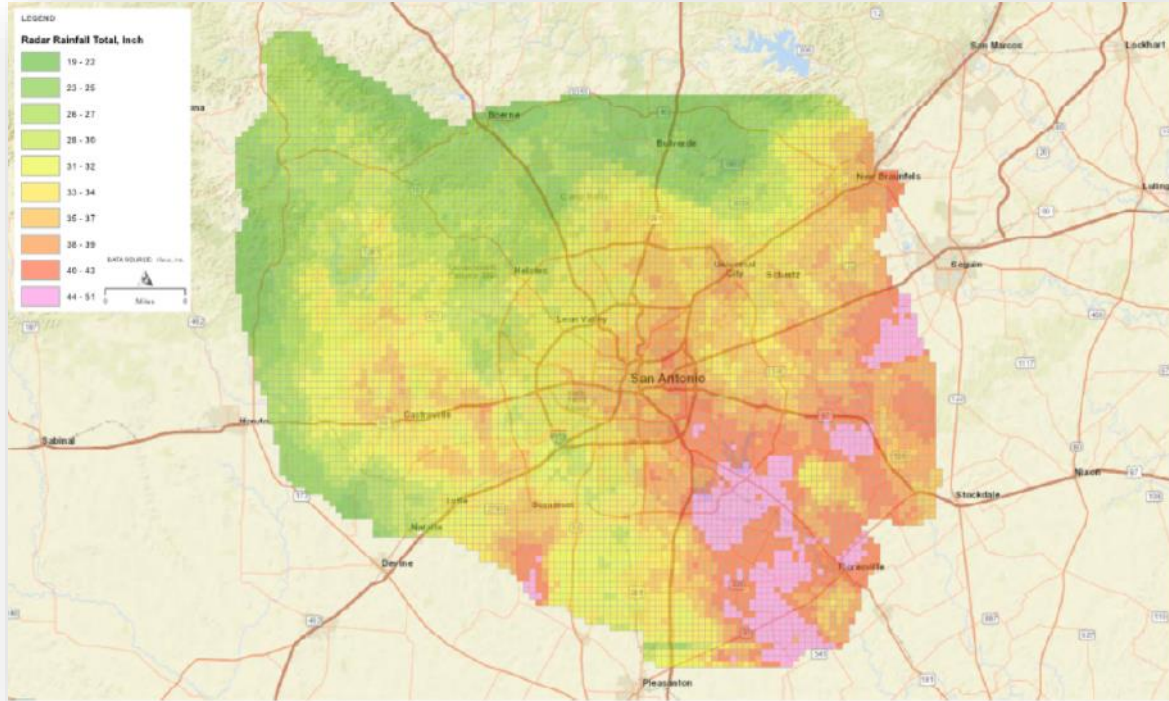
- Phase I, PRA & Discovery Areas are complete
- Phase 2 is nearing completion



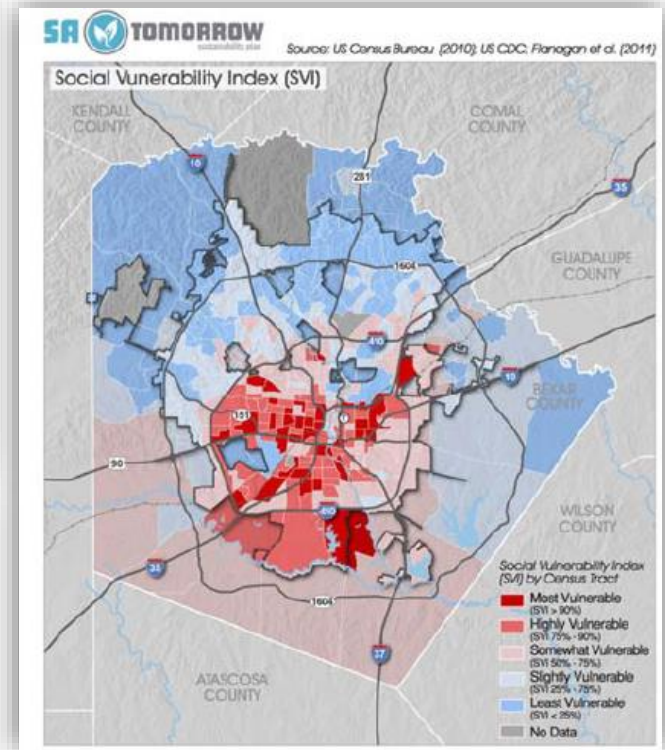
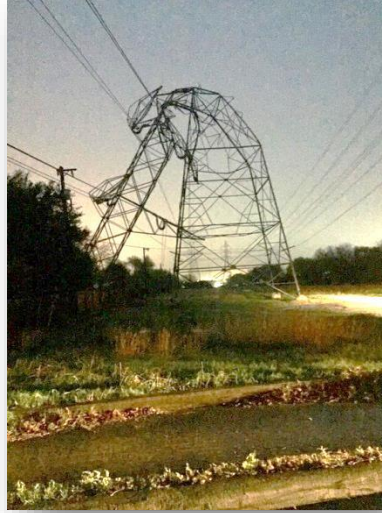
*Perceptions and Actions mapped against the Resilience Lens*



# Why a Resilient SA?



# San Antonio Vulnerabilities

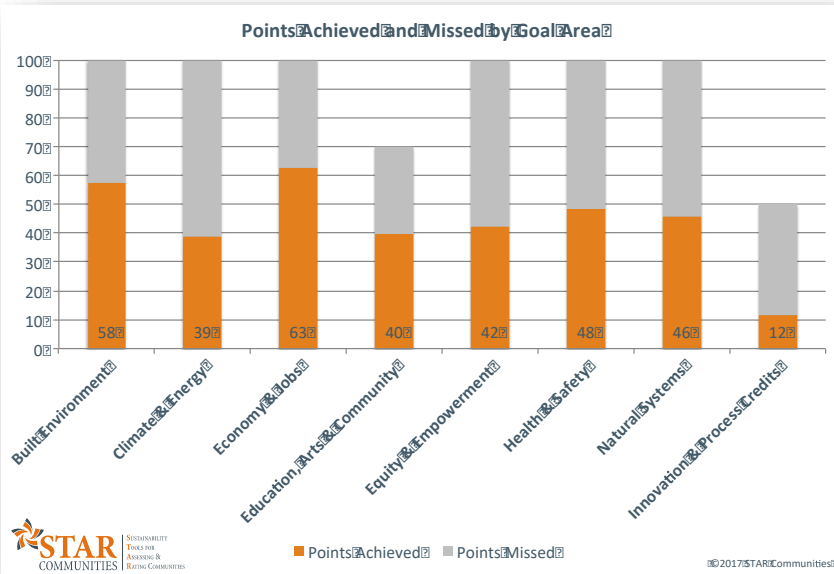




# Resilience Ratings



*San Antonio, TX was awarded  
a Certified 3-STAR Community Rating on April 6, 2016.*



Built Environment	Climate & Energy	Economy & Jobs	Education, Arts, & Community	Equity & Empowerment	Health & Safety	Natural Systems	Innovation & Process
BE-1: Ambient Noise & Light	CE-1: Climate Adaptation	EJ-1: Business Retention & Development	EAC-1: Arts & Culture	EE-1: Civic Engagement	HS-1: Active Living	NS-1: Green Infrastructure	IP-1: Best Practices & Processes
BE-2: Community Water Systems	CE-2: Greenhouse Gas Mitigation	EJ-2: Green Market Development	EAC-2: Community Cohesion	EE-2: Civil & Human Rights	HS-2: Community Health	NS-2: Biodiversity & Invasive Species	IP-2: Exemplary Performance
BE-3: Compact & Complete Communities	CE-3: Greening the Energy Supply	EJ-3: Local Economy	EAC-3: Educational Opportunity & Attainment	EE-3: Environmental Justice	HS-3: Emergency Management & Response	NS-3: Natural Resource Protection	IP-3: Local Innovation
BE-4: Housing Affordability	CE-4: Energy Efficiency	EJ-4: Quality Jobs & Living Wages	EAC-4: Historic Preservation	EE-4: Equitable Services & Access	HS-4: Food Access & Nutrition	NS-4: Outdoor Air Quality	IP-4: Good Governance
BE-5: Infill & Redevelopment	CE-5: Water Efficiency	EJ-5: Targeted Industry Development	EAC-5: Social & Cultural Diversity	EE-5: Human Services	HS-5: Health Systems	NS-5: Water in the Environment	
BE-6: Public Parkland	CE-6: Local Government GHG & Resource Footprint	EJ-6: Workforce Readiness	EAC-6: Aging in the Community	EE-6: Poverty Prevention & Alleviation	HS-6: Hazard Mitigation	NS-6: Working Lands	
BE-7: Transportation Choices	CE-7: Waste Minimization				HS-7: Safe Communities		

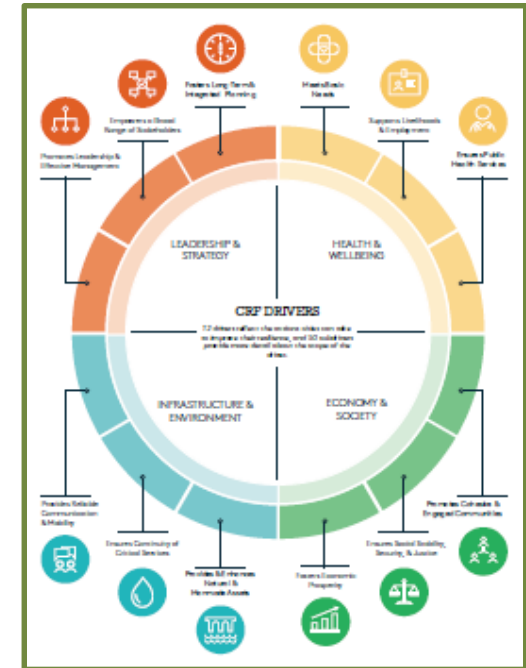
# Tools - Resilience Frameworks



1. Explore Hazards
2. Access Vulnerability & Risks
3. Investigate Options
4. Prioritize & Plan
5. Take Action



1. Plan Making
2. Identify, Understand & Use Current & Future Risk Scenarios
3. Strengthen Financial Capital for Resilience
4. Pursue Resilient Urban Development
5. Safeguard Natural Buffers to Enhance Natural Ecosystem Protective Functions
6. Strengthen Institutional Capacity for Resilience
7. Understand & Strengthen Societal Capacity for Resilience
8. Increase Infrastructure Resilience
9. Ensure Effective Disaster Response
10. Expedite Recover & Build Back Better



# Tools – Envision Infrastructure Rating System

## LEVEL OF ACHIEVEMENT



**QUALITY OF LIFE**  
13 Credits

### 1 PURPOSE

- QL1.1 Improve Community Quality of Life
- QL1.2 Stimulate Sustainable Growth & Development
- QL1.3 Develop Local Skills & Capabilities

### 2 WELLBEING

- QL2.1 Enhance Public Health & Safety
- QL2.2 Minimize Noise and Vibration
- QL2.3 Minimize Light Pollution
- QL2.4 Improve Community Mobility & Access
- QL2.5 Encourage Alternative Modes of Transportation
- QL2.6 Improve Site Accessibility, Safety & Wayfinding

### 3 COMMUNITY

- QL3.1 Preserve Historic & Cultural Resources
- QL3.2 Preserve Views & Local Character



**LEADERSHIP**  
10 Credits

### 1 COLLABORATION

- LD1.1 Provide Effective Leadership & Commitment
- LD1.2 Establish A Sustainability Management System
- LD1.3 Foster Collaboration & Teamwork
- LD1.4 Provide for Stakeholder Involvement

### 2 MANAGEMENT

- LD2.1 Pursue By-Product Synergy Opportunities
- LD2.2 Improve Infrastructure Integration

### 3 PLANNING

- LD3.1 Plan For Long-Term Monitoring & Maintenance
- LD3.2 Address Conflicting Regulations & Policies
- LD3.3 Extend Useful Life

- LD0.0 Innovate or Exceed Credit Requirements



**RESOURCE ALLOCATION**  
14 Credits

### 1 MATERIALS

- RA1.1 Reduce Net Embodied Energy
- RA1.2 Support Sustainable Procurement Practices
- RA1.3 Use Recycled Materials
- RA1.4 Use Regional Materials
- RA1.5 Divert Waste From Landfills
- RA1.6 Reduce Excavated Materials Taken Off Site
- RA1.7 Provide For Deconstruction & Recycling

### 2 ENERGY

- RA2.1 Reduce Energy Consumption
- RA2.2 Use Renewable Energy
- RA2.3 Commission & Monitor Energy Systems

### 3 WATER

- RA3.1 Protect Fresh Water Availability
- RA3.2 Reduce Potable Water Consumption
- RA3.3 Monitor Water Systems



**NATURAL WORLD**  
15 Credits

### 1 SITING

- NW1.1 Preserve Prime Habitat
- NW1.2 Protect Wetlands & Surface Water
- NW1.3 Preserve Prime Farmland
- NW1.4 Avoid Adverse Geology
- NW1.5 Preserve Floodplain Functions
- NW1.6 Avoid Unsuitable Development on Steep Slopes
- NW1.7 Preserve Greenfields

### 2 LAND+WATER

- NW2.1 Manage Stormwater
- NW2.2 Reduce Pesticide & Fertilizer Impacts
- NW2.3 Prevent Surface & Groundwater Contamination

### 3 BIODIVERSITY

- NW3.1 Preserve Species Biodiversity
- NW3.2 Control Invasive Species
- NW3.3 Restore Disturbed Soils
- NW3.4 Maintain Wetland & Surface Water Functions



**CLIMATE AND RISK**  
8 Credits

### 1 EMISSIONS

- CR1.1 Reduce Greenhouse Gas Emissions
- CR1.2 Reduce Air Pollutant Emissions

### 2 RESILIENCE

- CR2.1 Assess Climate Threat
- CR2.2 Avoid Traps & Vulnerabilities
- CR2.3 Prepare For Long-Term Adaptability
- CR2.4 Prepare For Short-Term Hazards
- CR2.5 Manage Heat Island Effects

- CR0.0 Innovate or Exceed Credit Requirements

**IMPROVED:** Conventional performance that slightly exceeds regulatory requirements

**ENHANCED:** On the right track with superior performance within reach

**SUPERIOR:** Remarkable performance that is noteworthy but not yet conserving

**CONSERVING:** Zero negative impacts

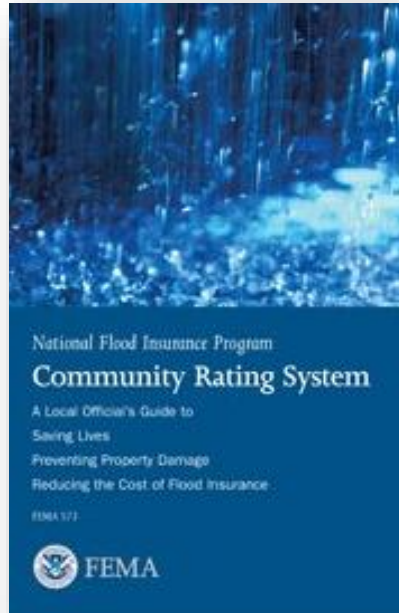
**RESTORATIVE:** Restoration of resources, ecological, economic and social systems





# Tools – NFIP Community Rating System

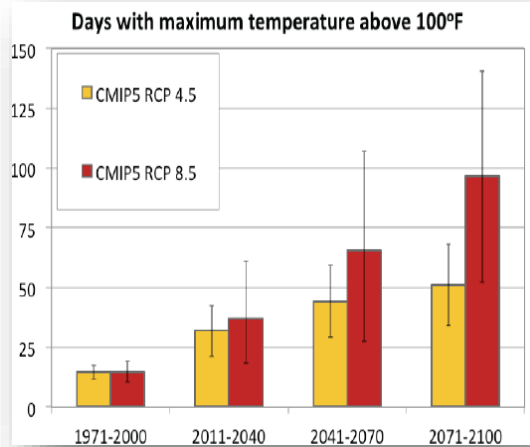
*The National Flood Insurance Program's (NFIP) Community Rating System (CRS) was implemented in 1990 as a voluntary program for recognizing and encouraging community floodplain management activities exceeding the NFIP's minimum standards.*



- Lower cost flood insurance rates for property owners.
- Citizens and property owners in CRS communities have increased opportunities to learn about risk, evaluate their individual vulnerabilities, and take action to protect themselves, as well as their homes and businesses.
- CRS floodplain management activities provide enhanced public safety, reduced damage to property and public infrastructure, and avoidance of economic disruption and loss.
- Communities can evaluate the effectiveness of their flood programs against a nationally recognized benchmark.

# Climate Action & Adaptation Plan - Resilience

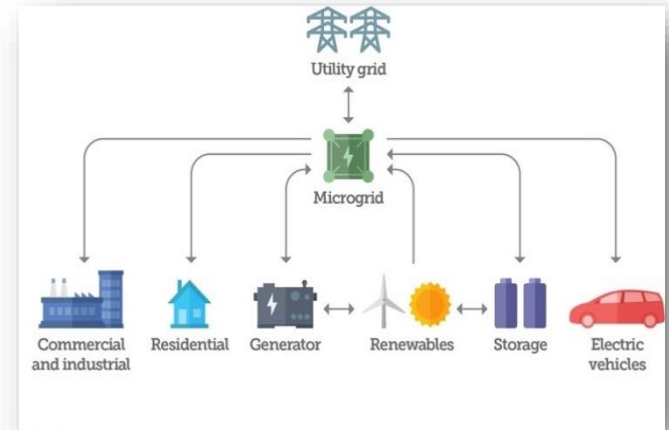
## Climate Projections



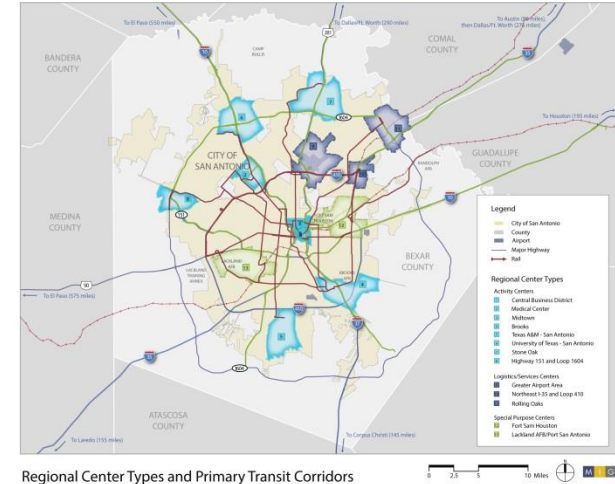
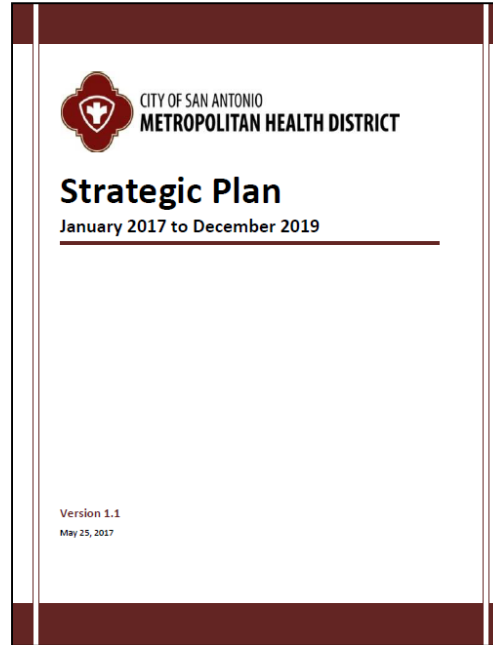
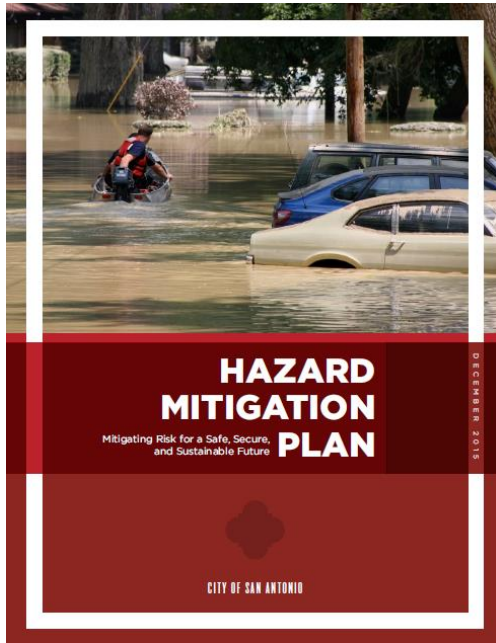
## Scenario Planning



## Adaptation Strategies



# Other Resilience-Related Opportunities



**Adopted Rolling 5 Year  
Infrastructure Management Program**





