



A Comparative Analysis

Sarah Baray, Ph.D.
CEO, Pre-K 4 SA

Melody Woosley
Human Services Director

WHY CITIES INVEST IN EARLY LEARNING?

Benefits to Children

- Increased school readiness and success
- Decreased special education and grade repetition
- Improved social and emotional development
- Decreased risky behavior and better health

Benefit to Parents

- Increased employment and earnings

Benefits to Society

- Lower costs of school, social services, crime, health care
- Higher productivity, earnings & economic growth
- Less educational, social and economic inequality

Source: Steve Barnett

ECONOMIC BENEFITS OF HIGH QUALITY EARLY LEARNING

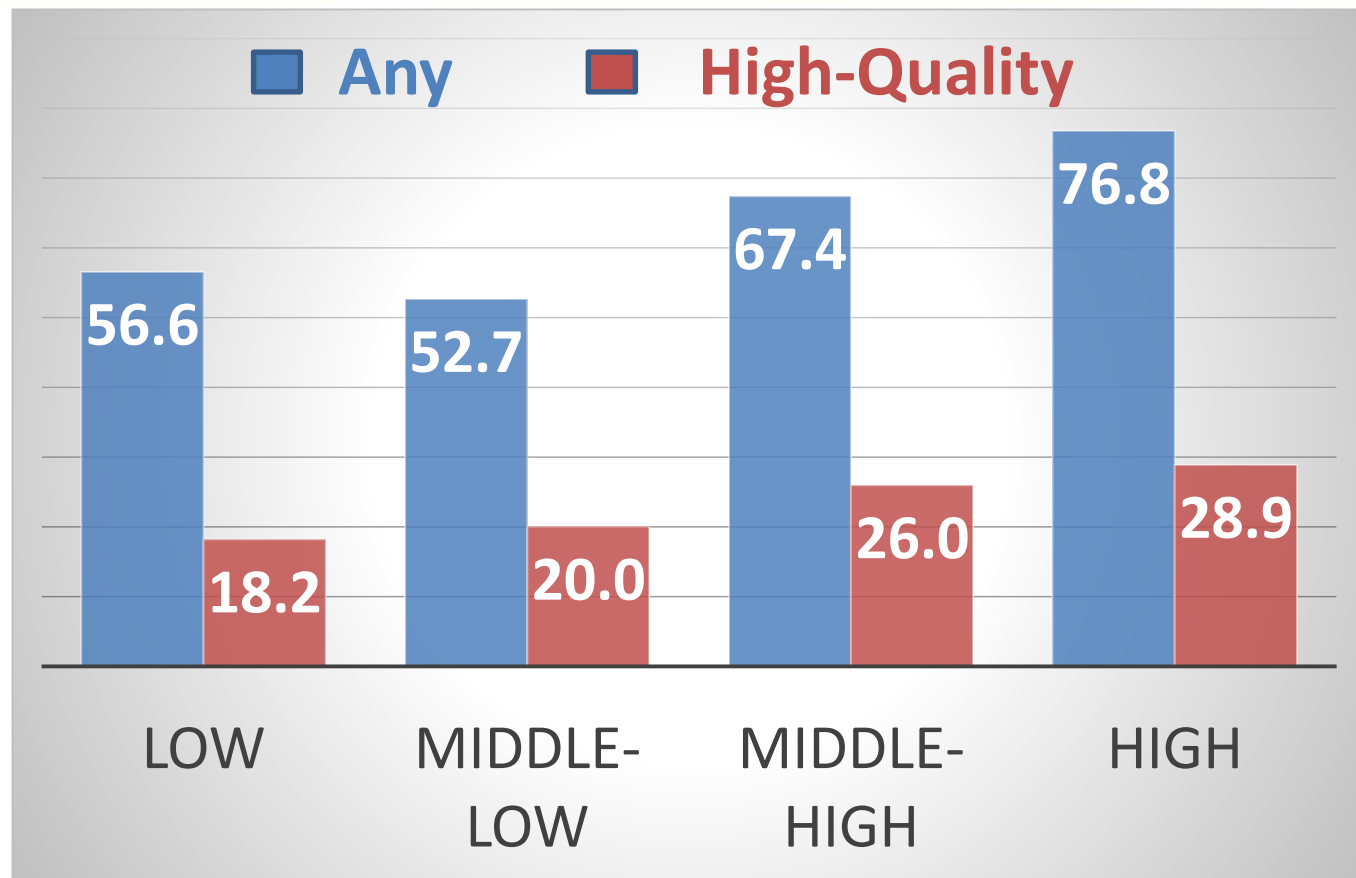
	<u>Cost</u>	<u>Benefits</u>	<u>ROI</u>
■ Perry Pre-K	\$20,854	\$179,446	8.6
■ Chicago CPC	\$ 9,719	\$105,294	10.8
■ State Pre-K (Avg)	\$ 5,719	\$ 30,491	5.3

Source: Ramon, I., Chattopadhyay, S. K., Barnett, W. S., Hahn, R. A., & Community Preventive Services Task Force. (2018). Early Childhood Education to Promote Health Equity: A Community Guide Economic Review. Journal of Public Health Management and Practice, 24(1), e8-e15.

“To produce substantive and lasting impacts on learning and development, public programs must be **intensive** and **high quality**.”

-Steve Barnett, Board of Governors Professor and Director of the National Institute for Early Education Research at Rutgers University

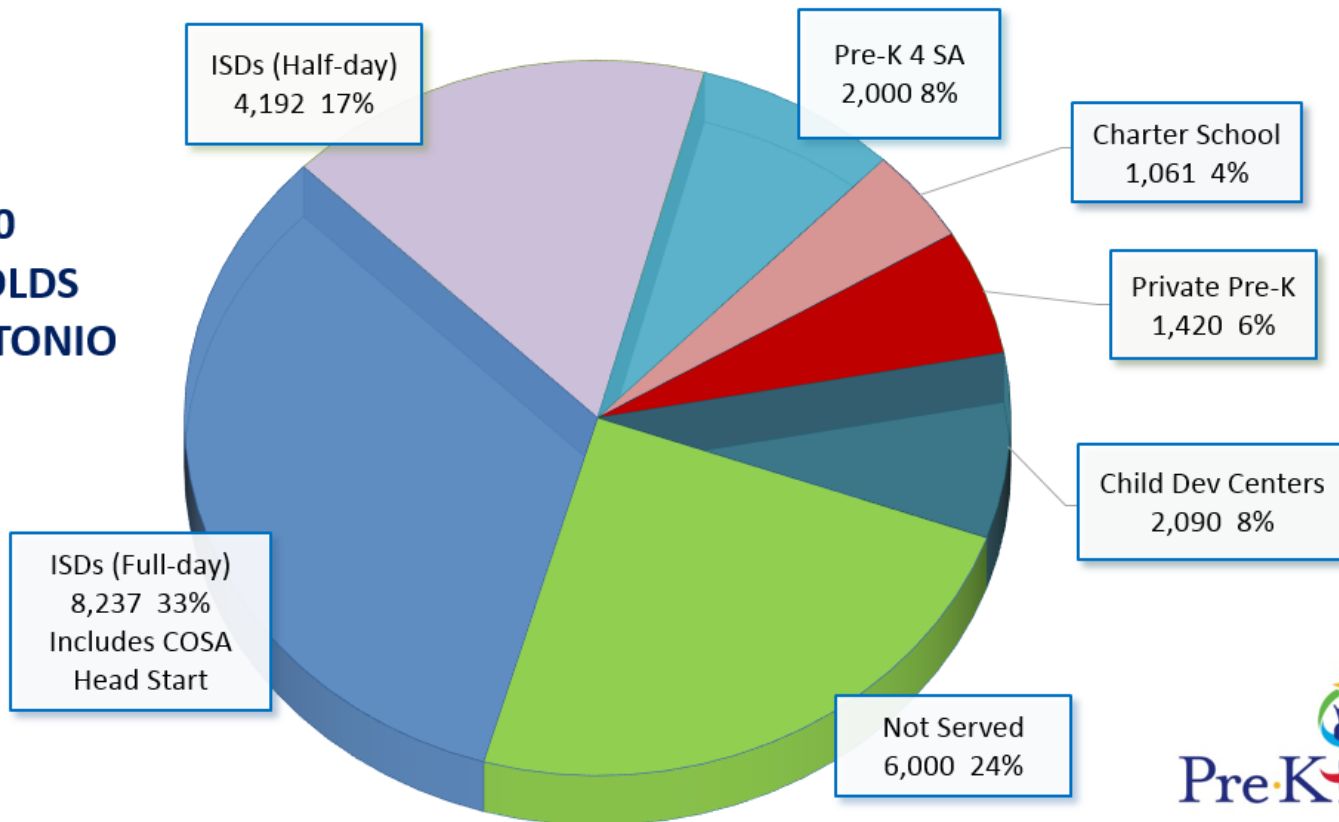
U.S. PRE-K ACCESS BY INCOME (4-YEAR-OLDS)



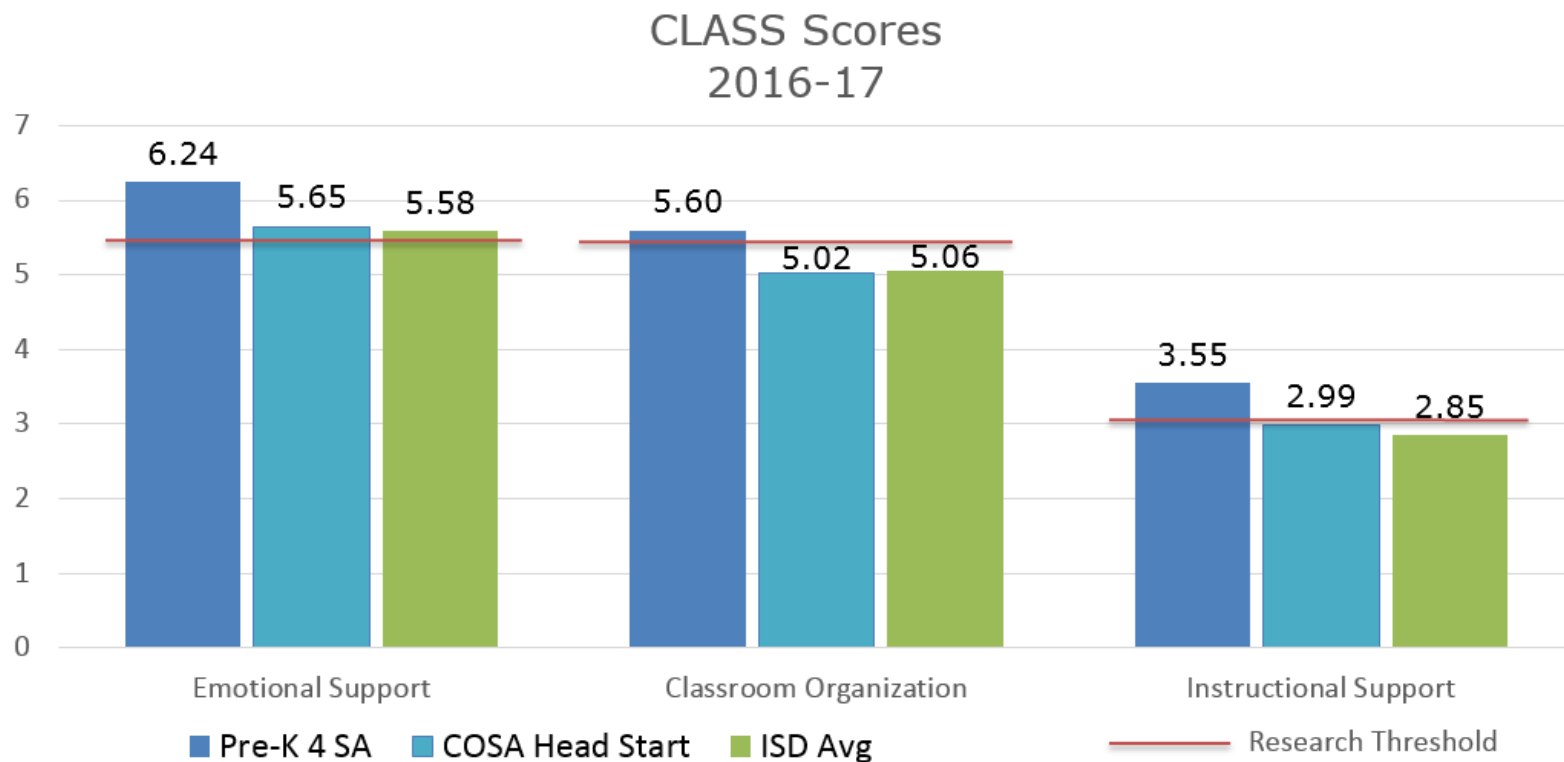
Source: Steve Barnett

Pre-K Access in San Antonio

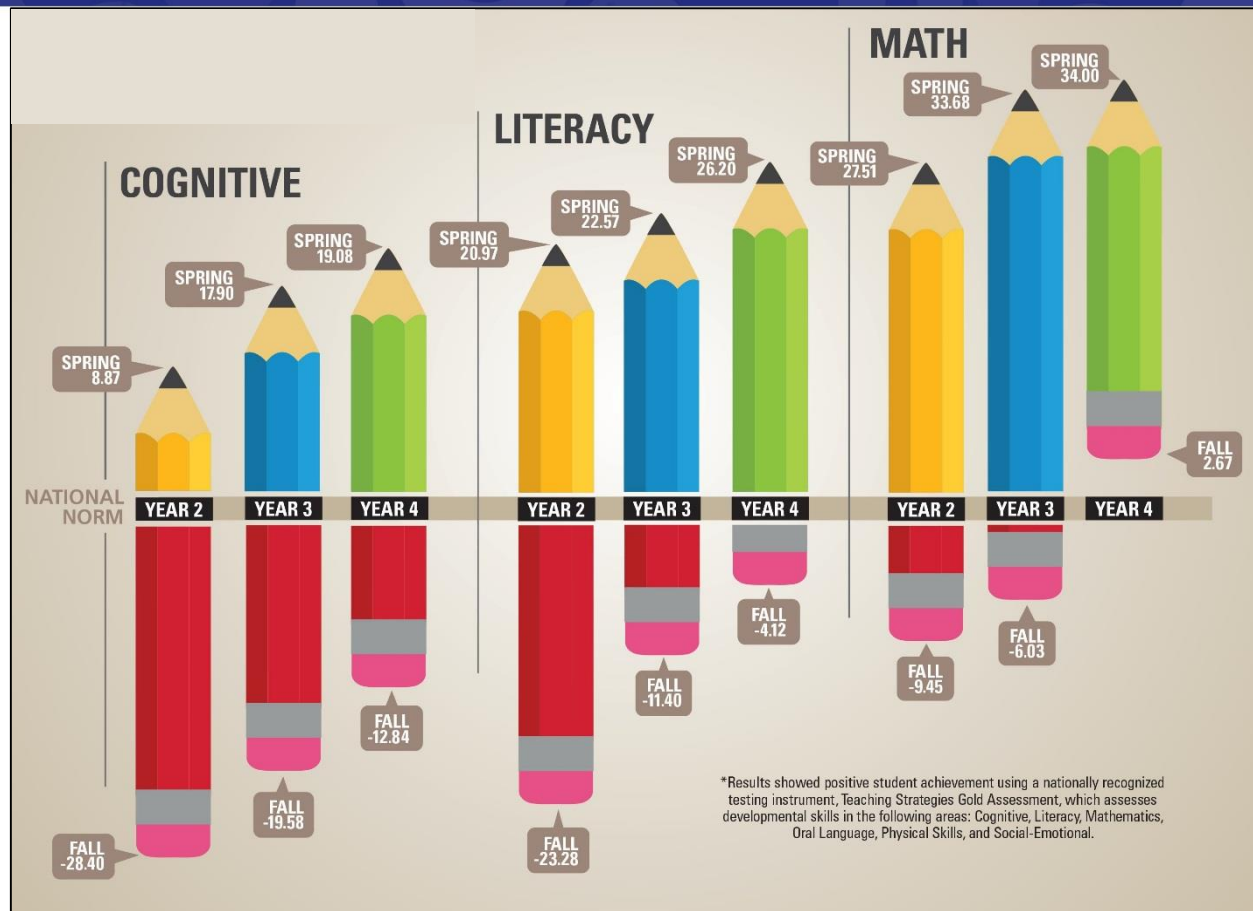
**25,000
4-YEAR-OLDS
IN SAN ANTONIO**



INSTRUCTIONAL QUALITY

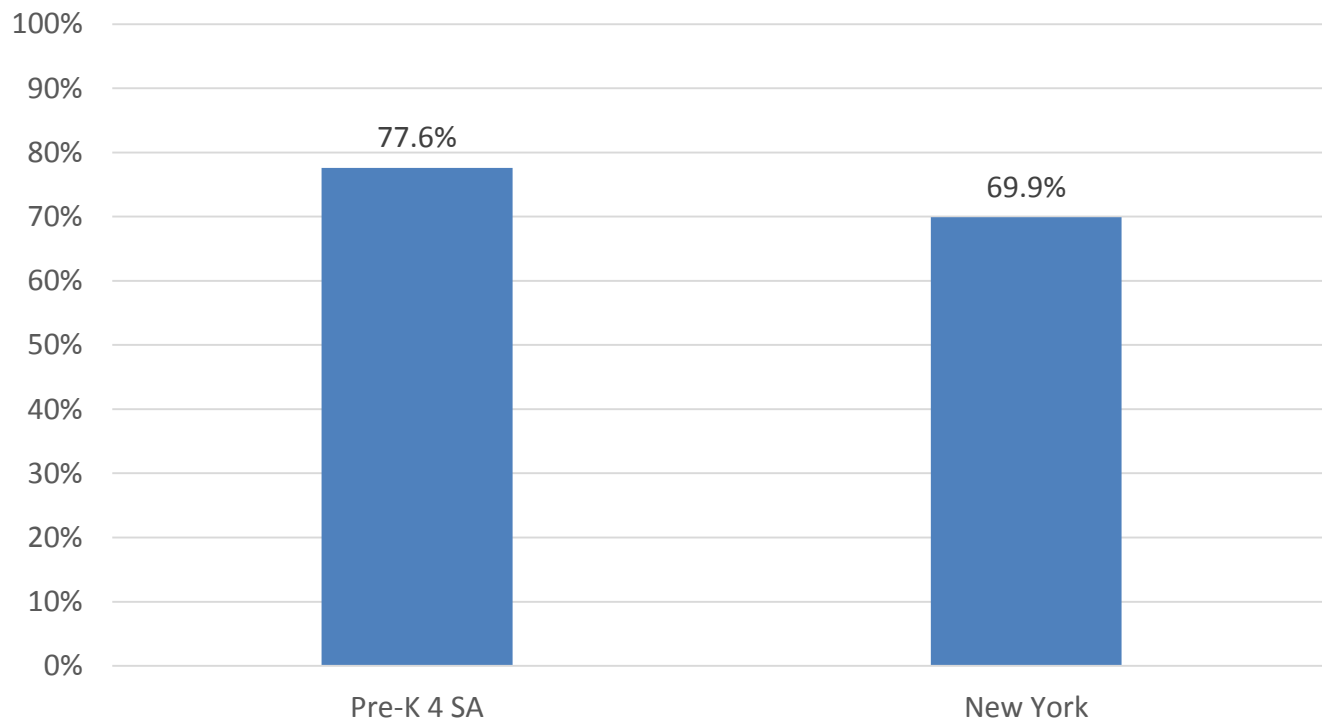


PRE-K 4 SA STUDENT OUTCOMES

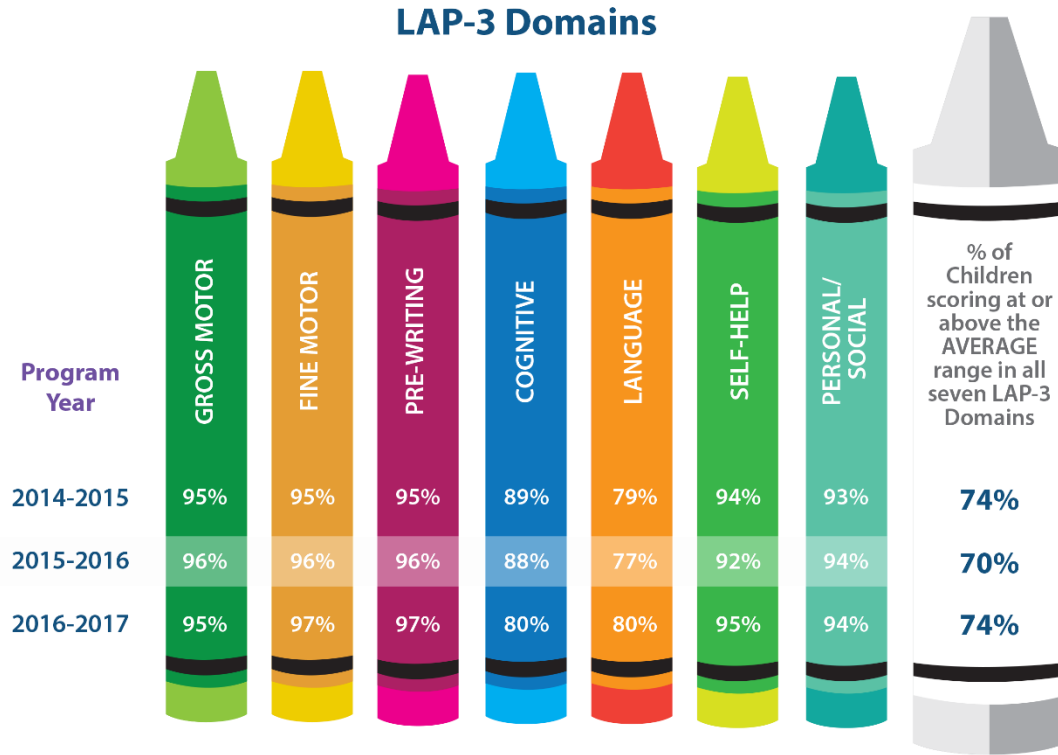


PRE-K 4 SA STUDENT OUTCOMES

Spring 2017 Executive Function



HEAD START STUDENT OUTCOMES





**Based on LAP-3 standards, the AVERAGE range is a raw score that is ± 6 months of the child's chronological age.*

COSA EARLY LEARNING PROGRAMS



Focus	Education/Workforce Development	School Readiness
Oversight	Local control	Shared with HHS and ISDs; Federally regulated
Governance	Board of Directors appointed by City Council	City Council and Head Start Parent Policy Council
Source of Funding	1/8 cent local sales tax	Federal grant & In-kind Match
Annual Budget	\$47.3 million	\$28.3 million
Impact	15 School Districts	2 School Districts

COSA EARLY LEARNING PROGRAMS

		
Age of Children	4-years	3 & 4 years
Number of Children	2,000 in Education Centers 2,800 through Grants 40,000 through Professional Dev.	3,020 in 21 schools/centers
Eligibility	<ul style="list-style-type: none"> State Pre-K Eligible: <ul style="list-style-type: none"> poverty, dual language learner, homeless, military foster care Tuition option 	<ul style="list-style-type: none"> Prioritizes students that are disabled, homeless, and/or in foster care 125% federal poverty
Cost Per Child	\$11,500	\$9,173
Service Area	Citywide, 15 school districts	Within SAISD and EISD



PRE-K 4 SA



DESIGNED FOR HIGHEST QUALITY

PRE-K 4 SA PROGRAM COMPONENTS: EDUCATION CENTERS

Education Centers



- Specialized early learning teachers
- HighScope curriculum
- Gold standard assessment
- Incubator of Innovation
- Research site
- Award winning: HEB Excellence in Education
- NAEYC Accredited

Demonstrating what is possible

CURRICULAR INNOVATIONS



PRE-K 4 SA PROGRAM COMPONENTS: PROFESSIONAL LEARNING

Education
Centers

Professional
Learning



- **Job-embedded, intensive training**
- 15 highly skilled coaches
- Free for any PreK–3rd grade teacher in SA
- Child Development Associate (CDA) credentialing for assistant teachers
- Leadership development for principals

Increasing teacher expertise

PRE-K 4 SA PROGRAM COMPONENTS: COMPETITIVE GRANTS

Education
Centers

Professional
Learning

Competitive
Grants

- **\$4.3 million awarded annually**
- Increasing quality and access across San Antonio
- Supporting evidence-based improvements



Incentivizing quality improvement

PRE-K 4 SA PROGRAM COMPONENTS: FAMILY ENGAGEMENT

Education
Centers

Professional
Learning

Competitive
Grants

Family
Engagement
& Outreach

- Builds on the strengths of families and communities
- Engages parents as teachers of their children
- Equips parents to serve as educational advocates for their children



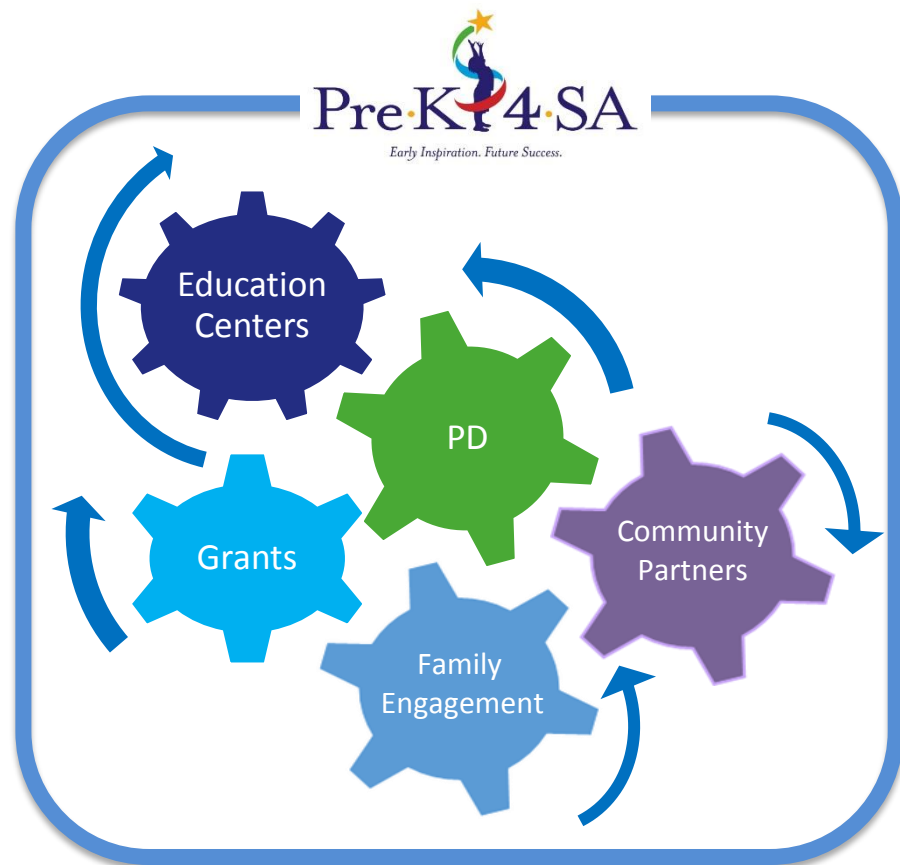
Supporting parents as leaders and
advocates for their children

FAMILY CAFÉS

- Parent liaison work space
- The “living room” for formal and informal gatherings
- Family hub to engage in school leadership and volunteer opportunities



PRE-K 4 SA DESIGNED TO DRIVE QUALITY



San Antonio Early Learning Programs (Birth-Grade 3)

- District Pre-K—3rd
- Head Start
- Private Schools
- Parochial Schools
- Charter Schools
- Child Development Centers



DEPARTMENT OF HUMAN SERVICES HEAD START

Three colored dots (blue, red, green) are positioned to the right of the text.

ENSURING CHILDREN ARE SAFE, HEALTHY, RESILIENT,
AND PREPARED FOR SCHOOL & LIFE

HEAD START BACKGROUND



- Created in 1965 to combat poverty
- 2007 Act implemented Early Learning Outcomes Framework and increased quality standards
- DHS sole Bexar County grantee for over 30 years
- 2011 Transitioned to 1 of 6 grantees
- Total County enrollment: 6,789

OUR CHILDREN AND FAMILIES



Median Household
Income

\$14,400

Families Living Below
100% of Poverty

84%

Children with
Disabilities

13%

Homeless Children

11%

DHS HEAD START PROGRAM COMPONENTS

Early
Education

Family
Support

Health and
Wellness

Admin.
Oversight

- Partnership with EISD and SAISD
- Provides 2 years full day, early education
 - 21 locations, 7 early education centers
- Exceeds State Quality Elements
 - certified teachers, employed by districts
 - low student to teach ratio
 - 95% attendance rate



DHS HEAD START PROGRAM COMPONENTS

Early
Education

Family
Support

Health and
Wellness

Admin.
Oversight

- Family and community support services provided by DHS
 - Home visits and family goal setting
 - Parent education/skills training
 - Parent leadership opportunities
 - Parenting education and engagement
 - Connections to community resources
 - 98% Overall Satisfaction Rate



DHS HEAD START PROGRAM COMPONENTS

Early
Education

Family
Support

Health and
Wellness

Admin.
Oversight

- University of the Incarnate Word – Medical Partner
- Metro Health Department – Dental Partner
- Ensure health and dental screenings and follow-up
- All children have a “medical home”
- Health activities and partnerships:
 - Lead paint screenings and abatement
 - Car seat installation
 - Medical records notebook for families



DHS HEAD START PROGRAM COMPONENTS

Early
Education

Family
Support

Health and
Wellness

Admin.
Oversight

- DHS administers grant
- Serves as fiscal agent
- Manages program governance
- Coordinates content area training & technical assistance
- Program Innovations: Micronauts, web-based parent curriculum, parent leadership program, Master level classes in early childhood



COORDINATION – SUPPORTING THE COMMUNITY TOGETHER

