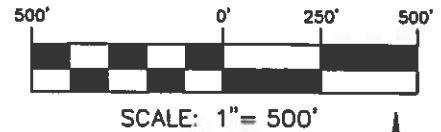


"SEP-HCP ENROLLMENT AREA" PHASE 1, TRACTS A-I



LEGEND

- *A-TRACT A-2.682 AC
- *B-TRACT B-12.929 AC
- *C-TRACT C-5.790 AC
- *D-TRACT D-6.401 AC
- *E-TRACT E-9.299 AC
- *F-TRACT F-16.213 AC
- *G-TRACT G-2.529 AC
- *H-TRACT H-4.657 AC
- *I-TRACT I-2.124 AC

① LOT NUMBER

HILLS AT BOERNE STAGE II, PHASE 1
(VOL. 9620, PG. 157-162 DPR)

LOT 999, PRIVATE STREET
(VOL. 9620, PG. 157-162 DPR)

NOTES:

1. THE PROFESSIONAL SERVICES PROVIDED HERewith INCLUDE THE PREPARATION OF A FIELD NOTE DESCRIPTION.
2. "THIS DOCUMENT WAS PREPARED UNDER 22TAC663.21, DOES NOT REFLECT THE RESULTS OF AN ON THE GROUND SURVEY, AND IS NOT TO BE USED TO CONVEY OR ESTABLISH INTERESTS IN REAL PROPERTY EXCEPT THOSE RIGHTS AND INTERESTS IMPLIED OR ESTABLISHED BY THE CREATION OR RECONFIGURATION OF THE BOUNDARY OF THE POLITICAL SUBDIVISION FOR WHICH IT WAS PREPARED."



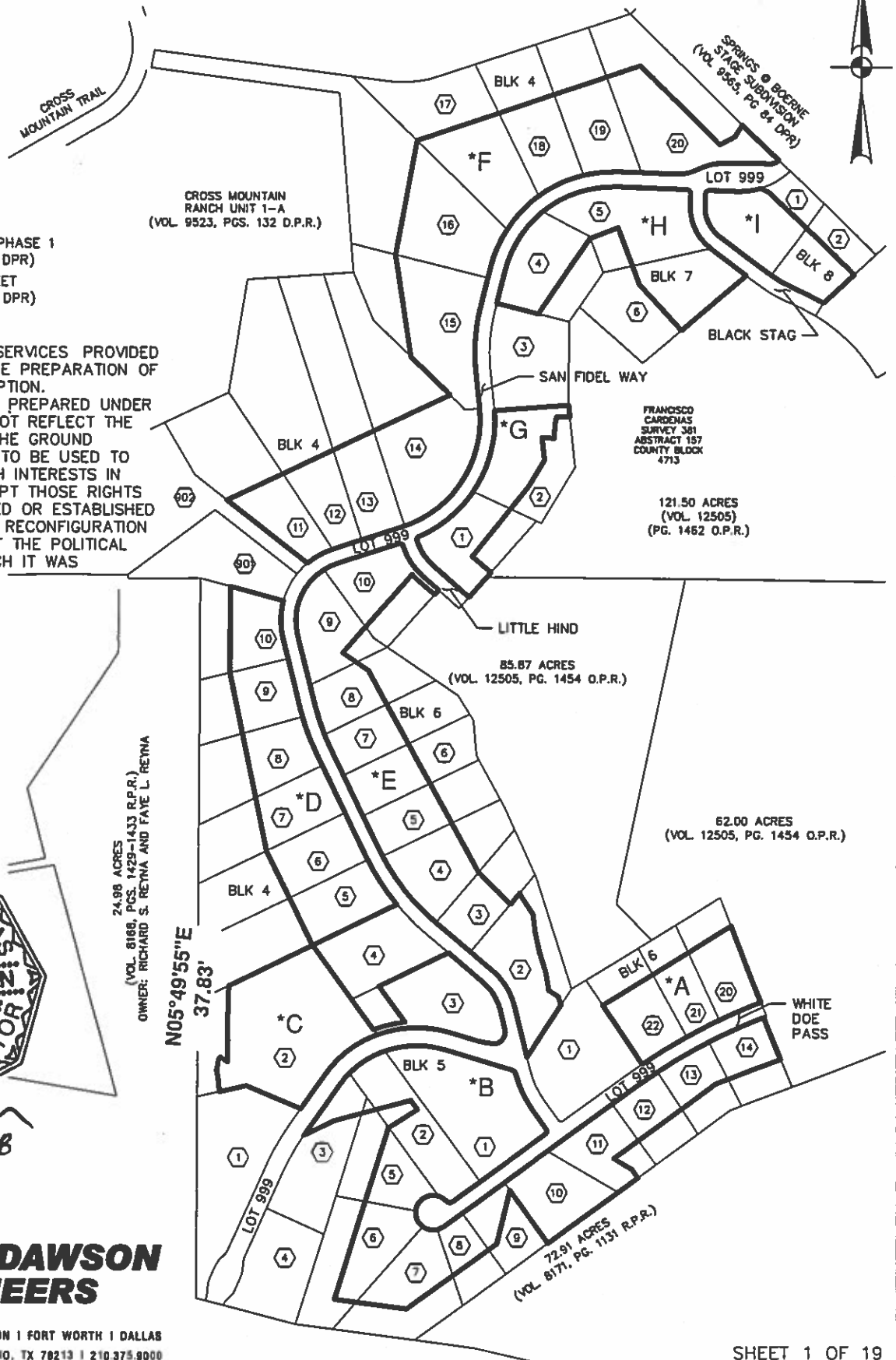
07/16/2018

**PAPE-DAWSON
ENGINEERS**

SAN ANTONIO | AUSTIN | HOUSTON | FORT WORTH | DALLAS
2006 NW LOOP 410 | SAN ANTONIO, TX 78213 | 210.375.8000
TSPF FIRM REGISTRATION #470 | TSPS FIRM REGISTRATION #10029800

JULY 2018

SHEET 1 OF 19
JOB No.: 6680-08





METES AND BOUNDS DESCRIPTION
FOR
"SEP-HCP ENROLLMENT AREA"
PHASE 1, TRACT A

A 2.682 acre, or 116,819 square feet more or less, tract of land, being a portion of Lots 20-22, Block 6 of the Hills at Boerne Stage II, Phase 1 Subdivision recorded in Volume 9620, Page 157-162 of the Deed and Plat Records of Bexar County, Texas, County Block 4730, Bexar County, Texas. Said 2.682 acre tract being more fully described as follows, with the bearings based on said Hills at Boerne Stage II, Phase 1:

BEGINNING: At a point for the northeast corner of White Doe Pass, a variable width private street, also known as Lot 999 as shown on said Hills at Boerne Stage II, Phase I, and the southeast corner of said Lot 20;

THENCE: S 68°42'24" W, along and with the northwest line of said White Doe Pass, the southeast line of said Lot 20, a distance of 13.00 feet to a point;

THENCE: Southwesterly, continuing along and with the northwest line of said White Doe Pass, the southeast line of said Lots 20-22, along a tangent curve to the left, said curve having a radius of 1950.00 feet, a central angle of 12°50'35", a chord bearing and distance of S 62°17'07" W, 436.19 feet, for an arc length of 437.10 feet to a point for the southwest corner of said Lot 22;

THENCE: N 34°08'12" W, departing the northwest line of said White Doe Pass, along and with the southwest line of said Lot 22, a distance of 236.11 feet to a point;

THENCE: N 58°20'22" E, over and across said Lots 20-22, a distance of 507.21 feet to a point on the northeast line of said Lot 20;

THENCE: S 21°17'36" E, along and with the northeast line of said Lot 20, a distance of 272.70 feet to the POINT OF BEGINNING and containing 2.682 acres in Bexar County, Texas. Said tract being described in accordance with an exhibit prepared under job number 6680-08 by Pape-Dawson Engineers, Inc.

"This document was prepared under 22TAC663.21, does not reflect the results of an on the ground survey, and is not to be used to convey or establish interests in real property except those rights and interests implied or established by the creation or reconfiguration of the boundary of the political subdivision for which it was prepared."

METES AND BOUNDS DESCRIPTION
FOR
"SEP-HCP ENROLLMENT AREA"
PHASE 1, TRACT B

A 12.929 acre, or 563,199 square feet more or less, tract of land, being all of Lot 1 and a portion of Lots 2-3, and Lots 5-14, Block 5 of the Hills at Boerne Stage II, Phase 1 Subdivision recorded in Volume 9620, Page 157-162 of the Deed and Plat Records of Bexar County, Texas, County Block 4730, Bexar County, Texas. Said 12.929 acre tract being more fully described as follows, with the bearings based on said Hills at Boerne Stage II, Phase I:

BEGINNING: At a point for the southeast line of White Doe Pass, a variable width private street, also known as Lot 999 as shown on said Hills at Boerne Stage II, Phase I, and the northeast corner of said Lot 14;

THENCE: S 21°17'36" E, along and with the northeast line of said Lot 14, a distance of 150.24 feet to a point;

THENCE: Over and across said Lots 14-11 the following bearings and distances:
S 68°50'59" W, a distance of 229.80 feet to a point;
S 53°53'09" W, a distance of 425.02 feet to a point;
S 59°24'29" E, a distance of 70.50 feet to a point;
S 36°06'51" E, a distance of 35.22 feet to a point on the southeast line of said Lot 11;

THENCE: S 53°53'09" W, along and with the southeast line of said Lot 11 and said Lot 10, a distance of 371.83 feet to a point for the southwest corner of said Lot 10, the southeast corner of said Lot 9;

THENCE: N 36°05'26" W, along and with the southwest line of said Lot 10, the northeast line of said Lot 9, a distance of 217.47 feet to a point;

THENCE: Over and across said Lots 2-3, and 5-9 the following bearings and distances:
S 14°04'46" W, a distance of 183.54 feet to a point;
S 53°53'09" W, a distance of 372.49 feet to a point;
N 82°39'22" W, a distance of 242.80 feet to a point;
N 17°34'01" E, a distance of 601.81 feet to a point;
N 57°18'21" E, a distance of 113.49 feet to a point;

N 35°32'36" W, a distance of 37.84 feet to a point;

S 74°57'26" W, a distance of 265.15 feet to a point;

S 64°01'05" W, a distance of 113.29 feet to a point on the south line of said Lot 999, Ravine Pass;

THENCE:

Along and with the south lines of said Lot 999 the following bearings and distances:

N 35°14'30" E, a distance of 202.85 feet to a point;

Northeasterly, along a tangent curve to the right, said curve having a radius of 320.00 feet, a central angle of 71°00'00", a chord bearing and distance of N 70°44'30" E, 371.65 feet, for an arc length of 396.54 feet to a point;

S 73°45'30" E, a distance of 233.95 feet to a point;

Southeasterly, along a tangent curve to the right, said curve having a radius of 25.00 feet, a central angle of 58°20'33", a chord bearing and distance of S 44°35'14" E, 24.37 feet, for an arc length of 25.46 feet to a point;

Southeasterly, along a reverse curve to the left, said curve having a radius of 375.00 feet, a central angle of 20°40'29", a chord bearing and distance of S 25°45'11" E, 134.58 feet, for an arc length of 135.32 feet to a point;

S 36°05'26" E, a distance of 75.10 feet to a point;

Southwesterly, along a tangent curve to the right, said curve having a radius of 10.00 feet, a central angle of 90°00'00", a chord bearing and distance of S 08°54'34" W, 14.14 feet, for an arc length of 15.71 feet to a point;

S 53°54'34" W, a distance of 389.34 feet to a point;

Northwesterly, along a tangent curve to the right, said curve having a radius of 15.00 feet, a central angle of 84°29'51", a chord bearing and distance of N 83°50'30" W, 20.17 feet, for an arc length of 22.12 feet to a point;

Southwesterly, along a reverse curve to the left, said curve having a radius of 58.00 feet, a central angle of 264°29'51", a chord bearing and distance of S 06°09'30" W, 85.87 feet, for an arc length of 267.75 feet to a point;

N 53°54'34" E, a distance of 793.18 feet to a point;

Northeasterly, along a tangent curve to the right, said curve having a radius of 1900.00 feet, a central angle of $14^{\circ}47'51''$, a chord bearing and distance of N $61^{\circ}18'29''$ E, 489.34 feet, for an arc length of 490.70 feet to a point;

N $68^{\circ}42'24''$ E, a distance of 3.00 feet to the POINT OF BEGINNING and containing 12.929 acres in Bexar County, Texas. Said tract being described in accordance with an exhibit prepared under job number 6680-08 by Pape-Dawson Engineers, Inc.

"This document was prepared under 22TAC663.21, does not reflect the results of an on the ground survey, and is not to be used to convey or establish interests in real property except those rights and interests implied or established by the creation or reconfiguration of the boundary of the political subdivision for which it was prepared."

METES AND BOUNDS DESCRIPTION
FOR
"SEP-HCP ENROLLMENT AREA"
PHASE I, TRACT C

A 5.790 acre, or 252,211 square feet more or less, tract of land, being a portion of Lots 2-3, Block 4 of the Hills at Boerne Stage II, Phase 1 Subdivision recorded in Volume 9620, Page 157-162 of the Deed and Plat Records of Bexar County, Texas, County Block 4730, Bexar County, Texas. Said 5.790 acre tract being more fully described as follows, with the bearings based on said Hills at Boerne Stage II, Phase 1:

BEGINNING: At a point on the west line of San Fidel Way, a 50-foot private street, also known as Lot 999, the northeast corner of said Lot 3, the east corner of Lot 4, Block 4 of said Hills at Boerne Stage II, Phase 1;

THENCE: Along and with the west line of said Lot 999, the east line of said Lot 3 and said Lot 2 the following bearings and distances:

S $49^{\circ}53'55''$ E, a distance of 152.97 feet to a point;

Southeasterly, along a tangent curve to the right, said curve having a radius of 175.00 feet, a central angle of $36^{\circ}00'00''$, a chord bearing and distance of S $31^{\circ}53'55''$ E, 108.16 feet, for an arc length of 109.96 feet to a point;

S $13^{\circ}53'55''$ E, a distance of 64.42 feet to a point;

Southwesterly, along a tangent curve to the right, said curve having a radius of 40.00 feet, a central angle of $108^{\circ}29'10''$, a chord bearing and distance of $S\ 40^{\circ}20'40''\ W$, 64.92 feet, for an arc length of 75.74 feet to a point;

Northwesterly, along a compound curve to the right, said curve having a radius of 245.00 feet, a central angle of $11^{\circ}39'15''$, a chord bearing and distance of $N\ 79^{\circ}35'08''\ W$, 49.75 feet, for an arc length of 49.83 feet to a point;

$N\ 73^{\circ}45'30''\ W$, a distance of 100.00 feet to a point;

Southwesterly, along a tangent curve to the left, said curve having a radius of 380.00 feet, a central angle of $71^{\circ}00'00''$, a chord bearing and distance of $S\ 70^{\circ}44'30''\ W$, 441.33 feet, for an arc length of 470.89 feet to a point;

$S\ 35^{\circ}14'30''\ W$, a distance of 137.11 feet to a point for the south corner of said Lot 2, the northeast corner of Lot 1 of said Hills at Boerne Stage II, Phase I;

THENCE: $N\ 67^{\circ}12'59''\ W$, along and with the southwest line of said Lot 2, the northeast line of said Lot 1, a distance of 196.86 feet to a point;

THENCE: $S\ 76^{\circ}53'47''\ W$, continuing along and with the southwest line of said Lot 2, the northeast line of said Lot 1, a distance of 91.54 feet to a point;

THENCE: Over and across said Lot 2, the following bearings and distances:

$N\ 05^{\circ}20'41''\ W$, a distance of 46.38 feet to a point;

$N\ 10^{\circ}10'42''\ W$, a distance of 26.63 feet to a point;

$N\ 10^{\circ}27'17''\ E$, a distance of 35.20 feet to a point;

$N\ 38^{\circ}22'31''\ E$, a distance of 10.29 feet to a point;

$S\ 56^{\circ}52'20''\ E$, a distance of 27.62 feet to a point;

$N\ 00^{\circ}18'56''\ E$, a distance of 216.24 feet to a point;

$N\ 05^{\circ}49'55''\ E$, a distance of 37.83 feet to a point on the northwest line of said Lot 2, the southeast line of Lot 5, Block 4 of said Hills at Boerne Stage II, Phase I;

THENCE: $N\ 63^{\circ}54'23''\ E$, along and with the northwest line of said Lot 2, the southeast line of said Lot 5, a distance of 309.85 feet to a point for the north corner of said Lot 2, the west corner of said Lot 4;

THENCE: S 36°05'26" E, along and with the southwest line of said Lot 4, the northeast line of said Lot 2, at a distance of 223.39 feet, passing the southwest corner of said Lot 4, the northwest corner of said Lot 3 and continuing over and across said Lot 3 for a total distance of 346.92 feet to a point;

THENCE: Northeasterly, continuing over and across said Lot 3, along a non-tangent curve to the right, said curve having a radial bearing of S 21°20'37" E, a radius of 400.00 feet, a central angle of 15°33'16", a chord bearing and distance of N 76°26'01" E, 108.26 feet, for an arc length of 108.59 feet to a point;

THENCE: N 36°05'26" W, continuing over and across said Lot 3, a distance of 147.53 feet to a point on the northwest line of said Lot 3;

THENCE: N 63°54'22" E, along and with the northwest line of said Lot 3, the southeast line of said Lot 4, a distance of 257.07 feet to the POINT OF BEGINNING and containing 5.790 acres in Bexar County, Texas. Said tract being described in accordance with an exhibit prepared under job number 6680-08 by Pape-Dawson Engineers, Inc.

"This document was prepared under 22TAC663.21, does not reflect the results of an on the ground survey, and is not to be used to convey or establish interests in real property except those rights and interests implied or established by the creation or reconfiguration of the boundary of the political subdivision for which it was prepared."

METES AND BOUNDS DESCRIPTION
FOR
"SEP-HCP ENROLLMENT AREA"
PHASE I, TRACT D

A 6.401 acre, or 278,828 square feet more or less, tract of land, being a portion of Lots 5-10, Block 4 of the Hills at Boerne Stage II, Phase 1 Subdivision recorded in Volume 9620, Page 157-162 of the Deed and Plat Records of Bexar County, Texas, County Block 4730, Bexar County, Texas. Said 6.401 acre tract being more fully described as follows, with the bearings based on said Hills at Boerne Stage II, Phase 1:

BEGINNING: At a point on the west line of San Fidel Way, a 50-foot private street, also known as Lot 999, the northeast corner of Lot 4, Block 4 of said Hills at Boerne Stage II, Phase 1, and the southeast corner of said Lot 5;

THENCE: S 63°54'23" W, departing the west line of said Lot 999, along and with the northwest line of said Lot 4, the southeast line of said Lot 5, a distance of 314.09 feet to a point for the northwest corner of said Lot 4, the southwest corner of said Lot 5;

THENCE: Over and across said Lots 5-10 the following bearings and distances:
N 26°05'37" W, a distance of 348.77 feet to a point;
N 11°37'44" W, a distance of 608.95 feet to a point;
N 00°18'56" E, a distance of 287.20 feet to a point on the north line of said Lot 10, the south line of Lot 901, Block 4 of said Hills at Boerne Stage II, Phase 1;

THENCE: S 74°58'42" E, along and with the north line of said Lot 10, the south line of Lot 901, a distance of 182.43 feet to a point on the west line of said Lot 999, the northeast corner of said Lot 10, and the southeast corner of said Lot 901;

THENCE: Along and with the west line of said Lot 999, and the east lines of said Lots 5-10 the following bearings and distances:
Southwesterly, along a non-tangent curve to the left, said curve having a radial bearing of S 74°56'56" E, a radius of 250.00 feet, a central angle of 29°01'34", a chord bearing and distance of S 00°32'17" W, 125.30 feet, for an arc length of 126.65 feet to a point;
S 13°58'30" E, a distance of 243.65 feet to a point;

Southeasterly, along a tangent curve to the left, said curve having a radius of 775.00 feet, a central angle of 12°07'08", a chord bearing and distance of S 20°02'04" E, 163.62 feet, for an arc length of 163.92 feet to a point;

S 26°05'37" E, a distance of 382.01 feet to a point;

Southeasterly, along a tangent curve to the left, said curve having a radius of 775.00 feet, a central angle of 13°29'13", a chord bearing and distance of S 32°50'14" E, 182.01 feet, for an arc length of 182.43 feet to the POINT OF BEGINNING and containing 6.401 acres in Bexar County, Texas. Said tract being described in accordance with an exhibit prepared under job number 6680-08 by Pape-Dawson Engineers, Inc.

"This document was prepared under 22TAC663.21, does not reflect the results of an on the ground survey, and is not to be used to convey or establish interests in real property except those rights and interests implied or established by the creation or reconfiguration of the boundary of the political subdivision for which it was prepared."

METES AND BOUNDS DESCRIPTION
FOR
"SEP-HCP ENROLLMENT AREA"
PHASE 1, TRACT E

A 9.302 acre, or 405,195 square feet more or less, tract of land, being a portion of Lots 2-10, Block 6 of the Hills at Boerne Stage II, Phase 1 Subdivision recorded in Volume 9620, Page 157-162 of the Deed and Plat Records of Bexar County, Texas, County Block 4730, Bexar County, Texas. Said 9.302 acre tract being more fully described as follows, with the bearings based on said Hills at Boerne Stage II, Phase 1:

BEGINNING: At a point on the east line of San Fidel Way, a 50-foot private street, also known as Lot 999, the southwest corner of said Lot 2, and the northwest corner of Lot 1, Block 6 of said Hills at Boerne Stage II, Phase 1;

THENCE: Along and with the east line of said Lot 999, the west lines of said Lots 2-10 the following bearings and distances:

N 13°53'55" W, a distance of 174.02 feet to a point;

Northwesterly, along a tangent curve to the left, said curve having a radius of 225.00 feet, a central angle of 36°00'00", a chord bearing and distance of N 31°53'55" W, 139.06 feet, for an arc length of 141.37 feet to a point;

N 49°53'55" W, a distance of 248.92 feet to a point;

Northwesterly, along a tangent curve to the right, said curve having a radius of 725.00 feet, a central angle of 23°48'17", a chord bearing and distance of N 37°59'46" W, 299.06 feet, for an arc length of 301.22 feet to a point;

N 26°05'37" W, a distance of 382.00 feet to a point;

Northwesterly, along a tangent curve to the right, said curve having a radius of 725.00 feet, a central angle of 12°07'08", a chord bearing and distance of N 20°02'04" W, 153.06 feet, for an arc length of 153.35 feet to a point;

N 13°58'30" W, a distance of 243.65 feet to a point;

Northeasterly, along a tangent curve to the right, said curve having a radius of 200.00 feet, a central angle of 86°00'01", a chord bearing and distance of N 29°01'30" E, 272.80 feet, for an arc length of 300.20 feet to a point;

N 72°01'30" E, a distance of 218.69 feet to a point;

Southeasterly, along a tangent curve to the right, said curve having a radius of 10.00 feet, a central angle of 88°51'15", a chord bearing and distance of S 63°32'53" E, 14.00 feet, for an arc length of 15.51 feet to a point;

S 19°07'15" W, a distance of 8.37 feet to a point;

Southeasterly, along a curve to the left, said curve having a radius of 225.00 feet, a central angle of 29°19'19", a chord bearing and distance of S 33°46'55" E, 113.89 feet, for an arc length of 115.15 feet to a point;

S 48°26'05" E, a distance of 70.00 feet to a point for the east corner of said Lot 10;

THENCE: S 41°33'55" W, along and with the southeast line of said Lot 10, a distance of 20.00 feet to a point;

THENCE: Over and across said Lots 2-10 the following bearings and distances:

N 48°26'34" W, a distance of 69.95 feet to a point;

Northwesterly, along a tangent curve to the right, said curve having a radius of 245.00 feet, a central angle of 07°02'21", a chord bearing and distance of N 44°55'24" W, 30.08 feet, for an arc length of 30.10 feet to a point;

S 41°33'55" W, a distance of 351.53 feet to a point;
S 55°50'04" E, a distance of 104.85 feet to a point;
S 28°42'11" E, a distance of 765.77 feet to a point;
S 45°20'54" E, a distance of 150.47 feet to a point;
N 40°06'05" E, a distance of 48.95 feet to a point;
S 23°23'07" E, a distance of 13.58 feet to a point;
S 34°00'27" E, a distance of 69.54 feet to a point;
S 07°02'17" E, a distance of 56.69 feet to a point;
S 12°31'44" E, a distance of 70.44 feet to a point;
S 17°31'32" E, a distance of 69.20 feet to a point;
S 09°21'37" E, a distance of 64.06 feet to a point;
S 57°08'39" E, a distance of 39.69 feet to a point;
S 16°59'27" E, a distance of 26.15 feet to a point;
S 27°00'34" E, a distance of 2.42 feet to a point on the southeast line of said Lot 2, the northwest line of said Lot 1;

THENCE: S 33°20'06" W, along and with the southeast line of said Lot 2, the northwest line of said Lot 1, a distance of 209.46 feet to the POINT OF BEGINNING and containing 9.302 acres in Bexar County, Texas. Said tract being described in accordance with an exhibit prepared under job number 6680-08 by Pape-Dawson Engineers, Inc.

"This document was prepared under 22TAC663.21, does not reflect the results of an on the ground survey, and is not to be used to convey or establish interests in real property except those rights and interests implied or established by the creation or reconfiguration of the boundary of the political subdivision for which it was prepared."

METES AND BOUNDS DESCRIPTION
FOR
"SEP-HCP ENROLLMENT AREA"
PHASE I, TRACT F

A 16.213 acre, or 706,257 square feet more or less, tract of land, being a portion of Lots 11-20, Block 4 of the Hills at Boerne Stage II, Phase I Subdivision recorded in Volume 9620, Page 157-162 of the Deed and Plat Records of Bexar County, Texas, County Block 4730, Bexar County, Texas. Said 16.213 acre tract being more fully described as follows, with the bearings based on said Hills at Boerne Stage II, Phase 1:

BEGINNING: At a point on the northwest line of San Fidel Way, a 50-foot private street, also known as Lot 999, the southeast corner of Lot 902, Block 4 of said Hills at Boerne Stage II, Phase I and the southwest corner of said Lot 11;

THENCE: N 51°52'26" W, departing the west line of said Lot 999, along and with the northeast line of said Lot 902, the southwest line of said Lot 11, a distance of 340.33 feet to a point;

THENCE: N 64°36'23" E, over and across said Lots 11-14, a distance of 824.26 feet to a point on the northeast line of said Lot 14, the southwest line of said Lot 15;

THENCE: N 45°45'51" W, along and with the northeast line of said Lot 14, the southwest line of said Lot 15, a distance of 182.82 feet to a point;

THENCE: Over and across said Lots 15-20 the following bearings and distances:
N 08°33'52" W, a distance of 344.46 feet to a point;
N 10°32'38" E, a distance of 388.09 feet to a point;
N 71°19'37" E, a distance of 787.36 feet to a point;
S 45°42'53" E, a distance of 375.30 feet to a point;
N 62°07'37" E, a distance of 57.22 feet to a point;
N 33°11'37" E, a distance of 46.39 feet to a point on the northeast line of said Lot 20;

THENCE: S 45°42'53" E, along and with the northeast line of said Lot 20, a distance of 167.92 feet to a point for the southeast corner of said Lot 20, the northeast corner of said Lot 999;

THENCE:

Along and with the southeast line of said Lots 11- 20, the northeast line of said Lot 999 the following bearings and distances:

Southwesterly, along a non-tangent curve to the right, said curve having a radius of 40.00 feet, a central angle of $48^{\circ}12'26''$, a chord bearing and distance of $S\ 68^{\circ}22'48''\ W$, 32.67 feet, for an arc length of 33.66 feet to a point;

$N\ 87^{\circ}30'56''\ W$, a distance of 56.63 feet to a point;

Northwesterly, along a tangent curve to the left, said curve having a radius of 160.00 feet, a central angle of $03^{\circ}36'58''$, a chord bearing and distance of $N\ 89^{\circ}19'25''\ W$, 10.10 feet, for an arc length of 10.10 feet to a point;

$S\ 88^{\circ}52'07''\ W$, a distance of 98.20 feet to a point;

Southwesterly, along a tangent curve to the left, said curve having a radius of 160.00 feet, a central angle of $21^{\circ}58'35''$, a chord bearing and distance of $S\ 77^{\circ}52'49''\ W$, 60.99 feet, for an arc length of 61.37 feet to a point;

$S\ 66^{\circ}53'32''\ W$, a distance of 29.98 feet to a point;

Southwesterly, along a tangent curve to the right, said curve having a radius of 140.00 feet, a central angle of $25^{\circ}04'39''$, a chord bearing and distance of $S\ 79^{\circ}25'51''\ W$, 60.79 feet, for an arc length of 61.28 feet to a point;

$N\ 88^{\circ}01'50''\ W$, a distance of 196.27 feet to a point;

Southwesterly, along a tangent curve to the left, said curve having a radius of 425.00 feet, a central angle of $78^{\circ}00'00''$, a chord bearing and distance of $S\ 52^{\circ}58'10''\ W$, 534.92 feet, for an arc length of 578.58 feet to a point;

$S\ 13^{\circ}58'10''\ W$, a distance of 148.02 feet to a point;

Southwesterly, along a tangent curve to the left, said curve having a radius of 575.00 feet, a central angle of $20^{\circ}00'00''$, a chord bearing and distance of $S\ 03^{\circ}58'10''\ W$, 199.70 feet, for an arc length of 200.71 feet to a point;

$S\ 06^{\circ}01'50''\ E$, a distance of 128.02 feet to a point;

Southwesterly, along a tangent curve to the right, said curve having a radius of 375.00 feet, a central angle of 78°03'20", a chord bearing and distance of S 32°59'50" W, 472.27 feet, for an arc length of 510.87 feet to a point;

S 72°01'30" W, a distance of 245.00 feet to a point;

THENCE: Southwesterly, along a tangent curve to the left, said curve having a radius of 250.00 feet, a central angle of 22°21'36", a chord bearing and distance of S 60°50'42" W, 96.95 feet, for an arc length of 97.56 feet to the POINT OF BEGINNING and containing 16.213 acres in Bexar County, Texas. Said tract being described in accordance with an exhibit prepared under job number 6680-08 by Pape-Dawson Engineers, Inc.

"This document was prepared under 22TAC663.21, does not reflect the results of an on the ground survey, and is not to be used to convey or establish interests in real property except those rights and interests implied or established by the creation or reconfiguration of the boundary of the political subdivision for which it was prepared."

METES AND BOUNDS DESCRIPTION
FOR
"SEP-HCP ENROLLMENT AREA"
PHASE I, TRACT G

A 2.531 acre, or 110,250 square feet more or less, tract of land, being a portion of Lots 1-2, Block 7 of the Hills at Boerne Stage II, Phase 1 Subdivision recorded in Volume 9620, Page 157-162 of the Deed and Plat Records of Bexar County, Texas, County Block 4730, Bexar County, Texas. Said 2.531 acre tract being more fully described as follows, with the bearings based on said Hills at Boerne Stage II, Phase 1:

BEGINNING: At a point for a southeast corner of Little Hind, a 50-foot private street, also known as Lot 999, the south corner of said Lot 1;

THENCE: Along and with the southeast lines of said Lot 999, the west lines of said Lot 1, the following bearings and distances:

N 48°26'34" W, a distance of 161.08 feet to a point;

Northwesterly, along a tangent curve to the right, said curve having a radius of 175.00 feet, a central angle of 29°18'49", a chord bearing and distance of N 33°46'40" W, 88.56 feet, for an arc length of 89.53 feet to a point;

N 19°07'15" W, a distance of 9.10 feet to a point;

Northeasterly, along a curve to the right, said curve having a radius of 10.00 feet, a central angle of 85°23'06", a chord bearing and distance of N 23°34'18" E, 13.56 feet, for an arc length of 14.90 feet to a point;

Northeasterly, along a reverse curve to the left, said curve having a radius of 425.00 feet, a central angle of 70°40'37", a chord bearing and distance of N 30°55'32" E, 491.64 feet, for an arc length of 524.26 feet to a point for the northwest corner of said Lot 2, the southwest corner of Lot 3, Block 7 of said Hills at Boerne Stage II, Phase 1;

THENCE: N 85°35'14" E, along and with the north line of said Lot 2, the south line of said Lot 3, a distance of 250.27 feet to a point for the northeast corner of said Lot 2, the southeast corner of said Lot 3;

THENCE: S 05°59'27" E, along and with the east line of said Lot 2, a distance of 39.57 feet to a point;

THENCE: Over and across said Lots 1 and 2, the following bearings and distances:

N 90°00'00" W, a distance of 44.74 feet to a point;

S 11°18'36" W, a distance of 26.56 feet to a point;

S 04°01'25" W, a distance of 33.44 feet to a point;

S 01°47'26" E, a distance of 12.33 feet to a point;

N 86°49'39" W, a distance of 41.35 feet to a point;

S 06°01'50" E, a distance of 75.72 feet to a point;

S 31°12'00" W, a distance of 96.94 feet to a point;

S 38°51'19" W, a distance of 307.39 feet to a point;

S 50°13'52" E, a distance of 82.31 feet to a point on the southeast line of said Lot 1;

THENCE: S 41°33'55" W, along and with the southeast line of said Lot 1, a distance of 111.54 feet to the POINT OF BEGINNING and containing 2.531 acres in Bexar County, Texas. Said tract being described in accordance with an exhibit prepared under job number 6680-08 by Pape-Dawson Engineers, Inc.

"This document was prepared under 22TAC663.21, does not reflect the results of an on the ground survey, and is not to be used to convey or establish interests in real property except those rights and interests implied or established by the creation or reconfiguration of the boundary of the political subdivision for which it was prepared."

METES AND BOUNDS DESCRIPTION
FOR
"SEP-HCP ENROLLMENT AREA"
TRACT H

A 4.658 acre, or 202,902 square feet more or less, tract of land, being a portion of Lots 4-6, Block 7 of the Hills at Boerne Stage II, Phase 1 Subdivision recorded in Volume 9620, Page 157-162 of the Deed and Plat Records of Bexar County, Texas, County Block 4730, Bexar County, Texas. Said 4.658 acre tract being more fully described as follows, with the bearings based on said Hills at Boerne Stage II, Phase 1:

BEGINNING: At a point on the southeast line of San Fidel Way, a variable width private street, also known as Lot 999, the west corner of said Lot 4, the northwest corner of Lot 3, Block 7 of said Hills at Boerne Stage II, Phase 1;

THENCE: Along and with the southeast lines of said Lot 999, the northwest lines of said Lots 4-6 the following bearings and distances:

N 13°58'10" E, a distance of 110.02 feet to a point;

Northeasterly, along a tangent curve to the right, said curve having a radius of 375.00 feet, a central angle of 78°00'00", a chord bearing and distance of N 52°58'10" E, 471.99 feet, for an arc length of 510.51 feet to a point;

S 88°01'50" E, a distance of 230.76 feet to a point;

Southeasterly, along a tangent curve to the right, said curve having a radius of 15.00 feet, a central angle of 90°00'00", a chord bearing and distance of S 43°01'50" E, 21.21 feet, for an arc length of 23.56 feet to a point;

S 01°58'10" W, a distance of 35.17 feet to a point;

Southeasterly, along a tangent curve to the left, said curve having a radius of 175.00 feet, a central angle of 55°04'44", a chord bearing and distance of S 25°34'12" E, 161.83 feet, for an arc length of 168.23 feet to a point;

S 53°06'33" E, a distance of 150.00 feet to a point for the east corner of said Lot 6;

THENCE: S 49°50'23" W, along and with the southeast line of said Lot 6, a distance of 285.53 feet to a point;

THENCE: Over and across said Lots 4-6 the following bearings and distances:

N 42°41'14" W, a distance of 207.28 feet to a point;

N 20°54'45" W, a distance of 203.13 feet to a point;

S 68°53'44" W, a distance of 100.00 feet to a point;

S 34°26'26" W, a distance of 300.24 feet to a point;

S 00°04'06" W, a distance of 6.26 feet to a point on the southwest line of said Lot 4, the northeast line of said Lot 3;

THENCE: N 76°01'50" W, along and with the southwest line of said Lot 4, the northeast line of said Lot 3, a distance of 147.01 feet to the POINT OF BEGINNING and containing 4.658 acres in Bexar County, Texas. Said tract being described in accordance with an exhibit prepared under job number 6680-08 by Pape-Dawson Engineers, Inc.

"This document was prepared under 22TAC663.21, does not reflect the results of an on the ground survey, and is not to be used to convey or establish interests in real property except those rights and interests implied or established by the creation or reconfiguration of the boundary of the political subdivision for which it was prepared."

METES AND BOUNDS DESCRIPTION
FOR
"SEP-HCP ENROLLMENT AREA"
TRACT I

A 2.126 acre, or 92,608 square feet more or less, tract of land, being a portion of Lots 1-2, Block 8 of the Hills at Boerne Stage II, Phase I Subdivision recorded in Volume 9620, Page 157-162 of the Deed and Plat Records of Bexar County, Texas, County Block 4730, Bexar County, Texas. Said 2.126 acre tract being more fully described as follows, with the bearings based on said Hills at Boerne Stage II, Phase 1:

BEGINNING: At a point on the northeast line of Black Stag, a 50-foot private street, also known as Lot 999, the south corner of said Lot 2;

THENCE: Along and with the northeast lines of said Lot 999, the southwest lines of said Lots 1-2 the following bearings and distances:

Along a non-tangent curve to the left, said curve having a radial bearing of S 30°43'29" W, a radius of 625.00 feet, a central angle of 05°18'44", a chord bearing and distance of N 61°55'53" W, 57.93 feet, for an arc length of 57.95 feet to a point;

N 64°35'15" W, a distance of 50.88 feet to a point;

Northwesterly, along a tangent curve to the right, said curve having a radius of 475.00 feet, a central angle of 11°28'42", a chord bearing and distance of N 58°50'54" W, 95.00 feet, for an arc length of 95.16 feet to a point;

N 53°06'33" W, a distance of 202.64 feet to a point;

Northeasterly, along a tangent curve to the right, said curve having a radius of 125.00 feet, a central angle of 55°04'44", a chord bearing and distance of N 25°34'12" W, 115.59 feet, for an arc length of 120.16 feet to a point;

N 01°58'10" E, a distance of 35.16 feet to a point;

Northeasterly, along a tangent curve to the right, said curve having a radius of 15.00 feet, a central angle of 90°00'00", a chord bearing and distance of N 46°58'10" E, 21.21 feet, for an arc length of 23.56 feet to a point;

S 88°01'50" E, a distance of 95.00 feet to a point;

Northeasterly, along a tangent curve to the left, said curve having a radius of 225.00 feet, a central angle of $19^{\circ}16'34''$, a chord bearing and distance of $N 82^{\circ}19'53'' E$, 75.34 feet, for an arc length of 75.70 feet to a point;

THENCE: $S 64^{\circ}53'19'' E$, departing the southeast line of said Lot 999, over and across said Lot 1, a distance of 28.35 feet to a point;

THENCE: $S 45^{\circ}42'54'' E$, continuing over and across said Lot 1 and said Lot 2, a distance of 392.50 feet to a point on the southeast line of said Lot 2;

THENCE: $S 47^{\circ}22'39'' W$, along and with the southeast line of said Lot 2, a distance of 139.50 feet to the POINT OF BEGINNING and containing 2.126 acres in Bexar County, Texas. Said tract being described in accordance with an exhibit prepared under job number 6680-08 by Pape-Dawson Engineers, Inc.

"This document was prepared under 22TAC663.21, does not reflect the results of an on the ground survey, and is not to be used to convey or establish interests in real property except those rights and interests implied or established by the creation or reconfiguration of the boundary of the political subdivision for which it was prepared."

PREPARED BY: Pape-Dawson Engineers, Inc.
DATE: July 12, 2018
JOB NO. 6680-08
DOC. ID. N:\CIVIL\6680-08\Word\6680-08 FN-A_I-combine.docx

