

1. 25% MINIMUM CANOPY COVERAGE IS REQUIRED FOR NON-RESIDENTIAL SITES.
2. THE BELOW CALCULATIONS NUMBERS ARE TAKEN FROM THE LANDSCAPE SECTION OF THE QT 4006 SITE DEVELOPMENT PLANS.

CANOPY CALCULATIONS ARE AS FOLLOWS:
 - 109,509 SQFT SITE AREA
 - 25% OF 109,509 = **27,377 SQFT CANOPY REQUIRED**
4. 28,030 SQFT OF SHADE HAS BEEN PROVIDED THROUGH MITIGATION (SEE LANDSCAPE PLANS FOR DETAILS)

TREE PRESERVATION CALCULATIONS (CALIPER METHOD):

1. ALL BELOW VALUES ARE IN INCHES UNLESS OTHERWISE NOTED
2. ALL THREES LISTED BELOW FALL UNDER THE DESIGNATION OF SIGNIFICANT TREES PER THE CITY OF SAN ANTONIO TREE ORDINANCE - SEC. 35-523 (F)(1)A
3. TREE 5119 (28' MESQUITE) IS DESIGNATED AS A HERITAGE TREE ON THIS SITE PER THE CITY OF SAN ANTONIO TREE ORDINANCE - SEC. 35-523 (F)(1)B. **IT IS NOT INCLUDED IN THE BELOW TREE PRESERVATION CALCULATIONS.**

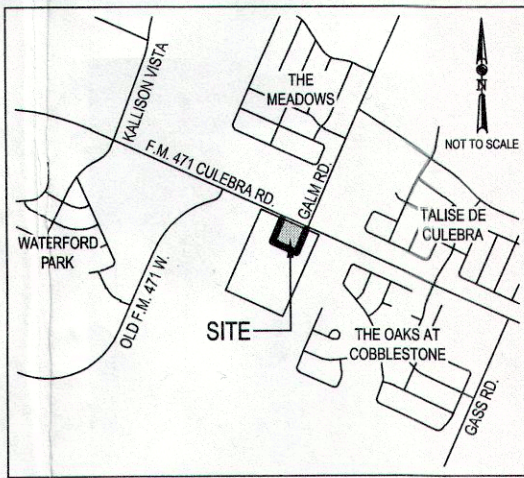
WITHIN ESA
REMOVED: 40 INCHES (TAG #S 5065, 5097, 5122, 5107)
PRESERVED: 10 INCHES (TAG #S 5122)
REQUIRED MITIGATION: 30 INCHES

WITHIN FLOODPLAIN
REMOVED: 72 INCHES (TAG #S 5067, 5069, 5079, 5080, 5081, 5064)
PRESERVED: 0 SQFT
REQUIRED MITIGATION: 58 INCHES

NOT WITHIN ESA OR FLOODPLAIN
REMOVED: 0 SQFT
PRESERVED: 75 INCHES (TAG #S 5098, 5109, 5033, 5034, 5037, 5040)
REQUIRED MITIGATION: NONE

TOTAL REQUIRED MITIGATION: 88 INCHES

PROVIDED MITIGATION: 132 INCHES



LOCATION MAP
N.T.S.

LEGEND

VOL

PG

OPR

U

E

Ø

Ø →

☆

✱

Ⓚ

MB

T

W

⊙

⊖

Ⓢ

Ⓜ

VOLUME

PAGE

OFFICIAL PUBLIC RECORDS

TRAFFIC SIGN

UTILITY SIGN

ELECTRIC BOX

ELECTRIC METER ON POLE

UTILITY POLE

UTILITY POLE WITH GUY WIRE

TRAFFIC SIGNAL UNLESS NOTED

KEY PAD

GATE EQUIPMENT

MAILBOX

TELEPHONE PEDESTAL

WATER VALVE

FIRE HYDRANT

STORM DRAIN MANHOLE

SANITARY SEWER MANHOLE

GAS VALVE

SILT FENCE

WIRE FENCE

PIPE FENCE

ELECTRIC (OVERHEAD)

ELECTRIC/TELEPHONE/CABLE TV (OVERHEAD)

GAS

WATER

SANITARY SEWER

STORM DRAIN

COMMUNICATION

— // — // — // — // —

— X — X — X — X —

— □ — □ — □ — □ —

— — — — — OELx — — — — —

— — — — — OETCTx — — — — —

— — — — — Oxx — — — — —

— — — — — Wxx — — — — —

— — — — — SSxx — — — — —

— — — — — SDxx — — — — —

— — — — — UCxx — — — — —

286

5175

TREE TO REMAIN

TREE TO BE REMOVED

TREE LIST NOTES:

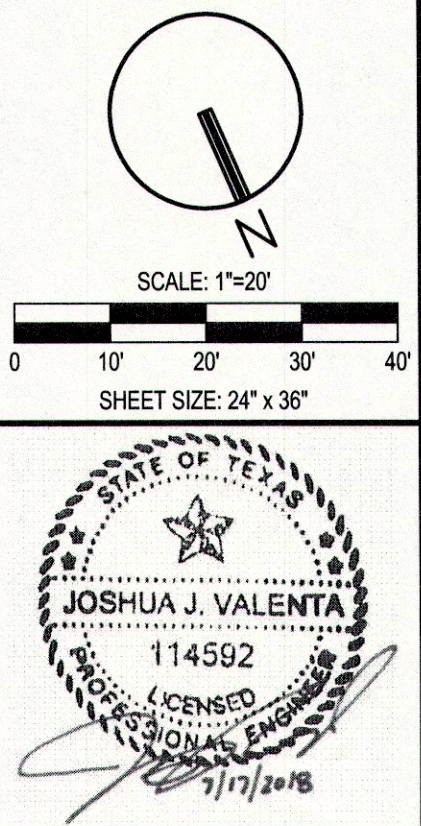
1. ALL TREES LISTED BELOW FALL UNDER THE DESIGNATION OF SIGNIFICANT TREES PER THE CITY OF SAN ANTONIO TREE ORDINANCE - SEC. 35-523 (F)(1)A
2. TREE 5119 (28' MESQUITE) IS DESIGNATED AS A HERITAGE TREE ON THIS SITE PER THE CITY OF SAN ANTONIO TREE ORDINANCE - SEC. 35-523 (F)(1)B
3. TREES TO BE REMOVED ARE SHOWN HATCHED IN THE TREE LIST.
4. TREE CANOPY WAS DETERMINED BY THE FOLLOWING FORMULA:

$$\text{TREE CANOPY} = \left(\frac{\text{TREE SPREAD}}{2} \right)^2 \times 3.14159$$

TREE TABLE				
POINT NUMBER	SPECIES	TRUNK DIA (IN)	SPREAD (FT)	CANOPY (SQFT)
5033	HACKBERRY	16	50	1983
5034	HACKBERRY	12	45	1590
5037	MESQUITE	10	45	1590
5040	MESQUITE	14	60	2827
5064	HACKBERRY	14	12	113
5065	HACKBERRY	10	14	154
5067	HACKBERRY	12	12	113
5069	HACKBERRY	14	20	314
5079	PERSIMMON	10	12	113
5080	MESQUITE	10	30	707
5081	HACKBERRY	12	12	113
5097	HACKBERRY	12	15	177
5098	HACKBERRY	13	15	177
5107	HACKBERRY	18	28	616
5109	HACKBERRY	10	15	177
5119	MESQUITE	28	42	1385
5122	MESQUITE	10	15	177

TREE PROTECTION NOTES:

1. ALL TREES WITH A DIAMETER GREATER THAN 3 INCHES AFFECTED BY CONSTRUCTION SHALL HAVE THE LIMBS AND ROOTS TRIMMED AND PRUNED ACCORDING TO ITEM NO. 802. TREE PRUNING, SOIL AMENDING AND FERTILIZATION... UNLESS SPECIFIED TREES SHALL RECEIVE LEVEL 2 PROTECTION AS PER ITEM NO. 802. TREES TO BE REMOVED LEVEL 1 PROTECTION AS PER ITEM NO. 802 ARE SHOWN ON TREE PROTECTION TABLE ON THIS SHEET.
2. ALL TREES SHALL REMAIN UNLESS NOTED ON THE PLANS.
3. NO SITE PREPARATION WORK SHALL BEGIN IN AREAS WHERE TREE PRESERVATION AND TREATMENT MEASURES HAVE NOT BEEN COMPLETED AND APPROVED.
4. TREE PROTECTION FENCING SHALL BE REQUIRED. TREE PROTECTION FENCING SHALL BE INSTALLED, MAINTAINED AND REPLIED BY THE CONTRACTOR DURING SITE CONSTRUCTION.
5. THE CONTRACTOR SHALL AVOID CUTTING ROOTS LARGER THAN THREE INCHES IN DIAMETER WHEN EXCAVATING NEAR EXISTING TREES. EXCAVATION IN THE VICINITY OF TREES SHALL PROCEED WITH CAUTION. THE CONTRACTOR SHALL CONTACT THE CITY INSPECTOR.
6. THE ROOT PROTECTION ZONE IS THAT AREA SURROUNDING A TREE, AS MEASURED BY A RADIUS FROM THE TREE TRUNK, IN WHICH NO EQUIPMENT, VEHICLES OR MATERIALS MAY OPERATE OR BE STORED. THE REQUIRED RADIUS IS 1' FOOT PER DIAMETER INCH OF THE TREE. FOR EXAMPLE, A 10-INCH DIAMETER TREE WOULD HAVE A 5-FOOT RADIUS ROOT PROTECTION ZONE AROUND THE TREE. ROOTS OR BRANCHES THAT ARE IN CONFLICT WITH THE PROTECTION SHALL BE CUT CLEANLY ACCORDING TO PROPER PRUNING METHODS. LIVE OAK WOUNDS SHALL BE PAINTED OVER, WITHIN 20 MINUTES TO PREVENT OAK WILT.
7. ACCESS TO FENCED AREAS WILL BE PERMITTED ONLY WITH THE APPROVAL OF THE ENGINEER OR CITY INSPECTOR.
8. GRADING IF REQUIRED, SHALL BE LIMITED TO A 3-INCH CUT OR FILL WITHIN THE FENCED ROOT ZONE AREAS.
9. TREES, SHRUBS OR BUSHES TO BE CLEARED FROM PROTECTED ROOT ZONE AREAS SHALL BE REMOVED BY HAND AS CLOSE TO THE TRUNK AS POSSIBLE BY THE CITY OF SAN ANTONIO OR CITY INSPECTOR.
10. TREES DAMAGED OR LOST DUE TO CONTRACTOR'S NEGLIGENCE DURING CONSTRUCTION SHALL BE MITIGATED TO THE ENGINEER'S SATISFACTION.
11. EXPOSED ROOTS SHALL BE COVERED AT THE END OF EACH DAY USING TECHNIQUES SUCH AS COVERING WITH SOIL, MULCH OR WET BURLAP.
12. ANY TREE REMOVAL SHALL BE APPROVED BY THE CITY ARBORIST PRIOR TO ITS REMOVAL.
13. THE MINIMUM TREE CANOPY COVER REQUIREMENTS MAY BE DEFERRED WITH A GUARANTEE OF PERFORMANCE EXECUTED AND FILED WITH THE CITY OF SAN ANTONIO. THE CITY ARBORIST SHALL DETERMINE THE PROBABLE MAXIMUM AMOUNT OF TREE MITIGATION REQUIRED (MEASURED IN DOLLARS) THAT MAY BE ATTRIBUTABLE TO THE DEVELOPMENT.
14. SEE FIGURE 2.0 FOR TREE PRESERVATION DETAILS



REVISIONS:

MATKINHOVER
ENGINEERING & SURVEYING

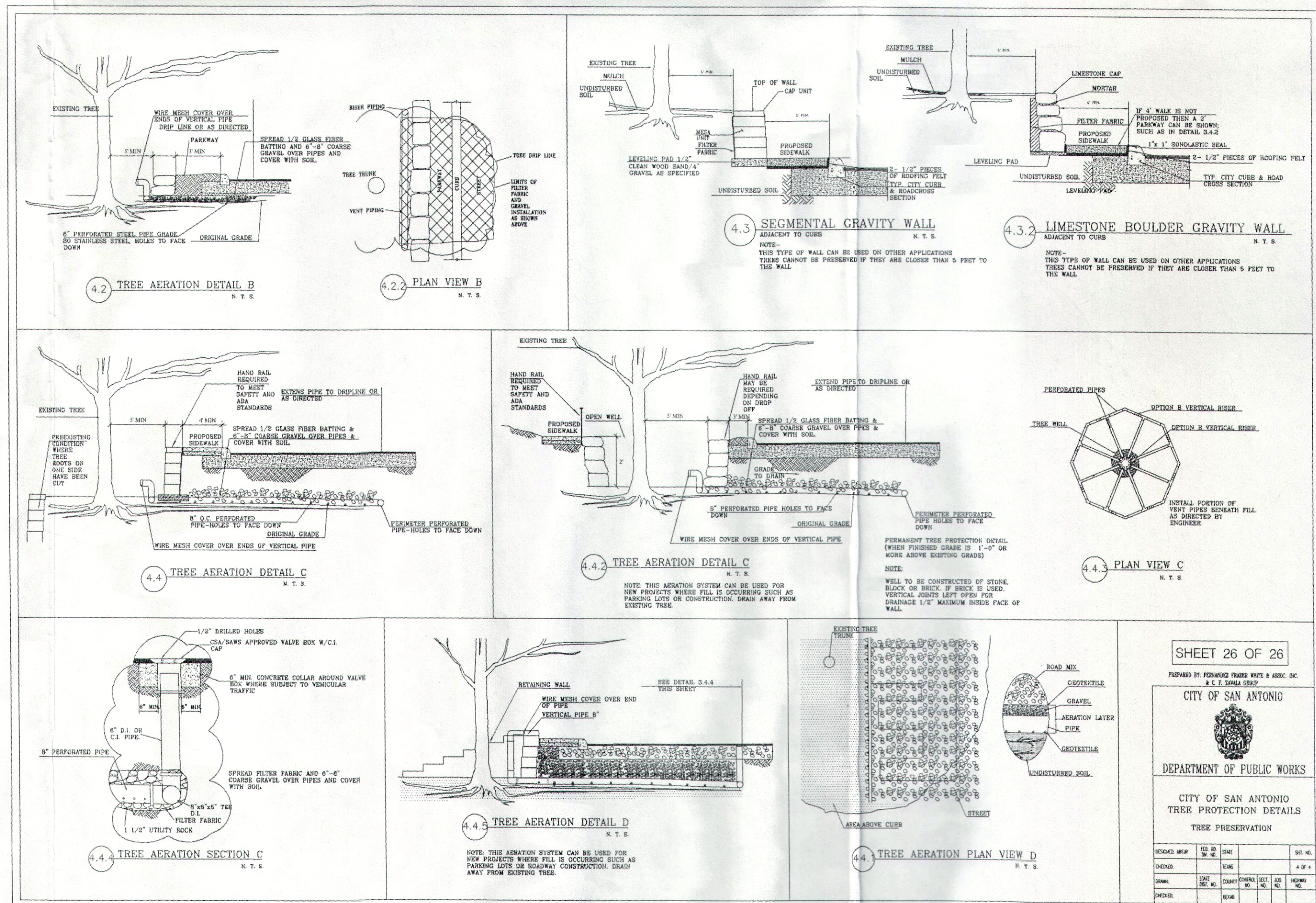
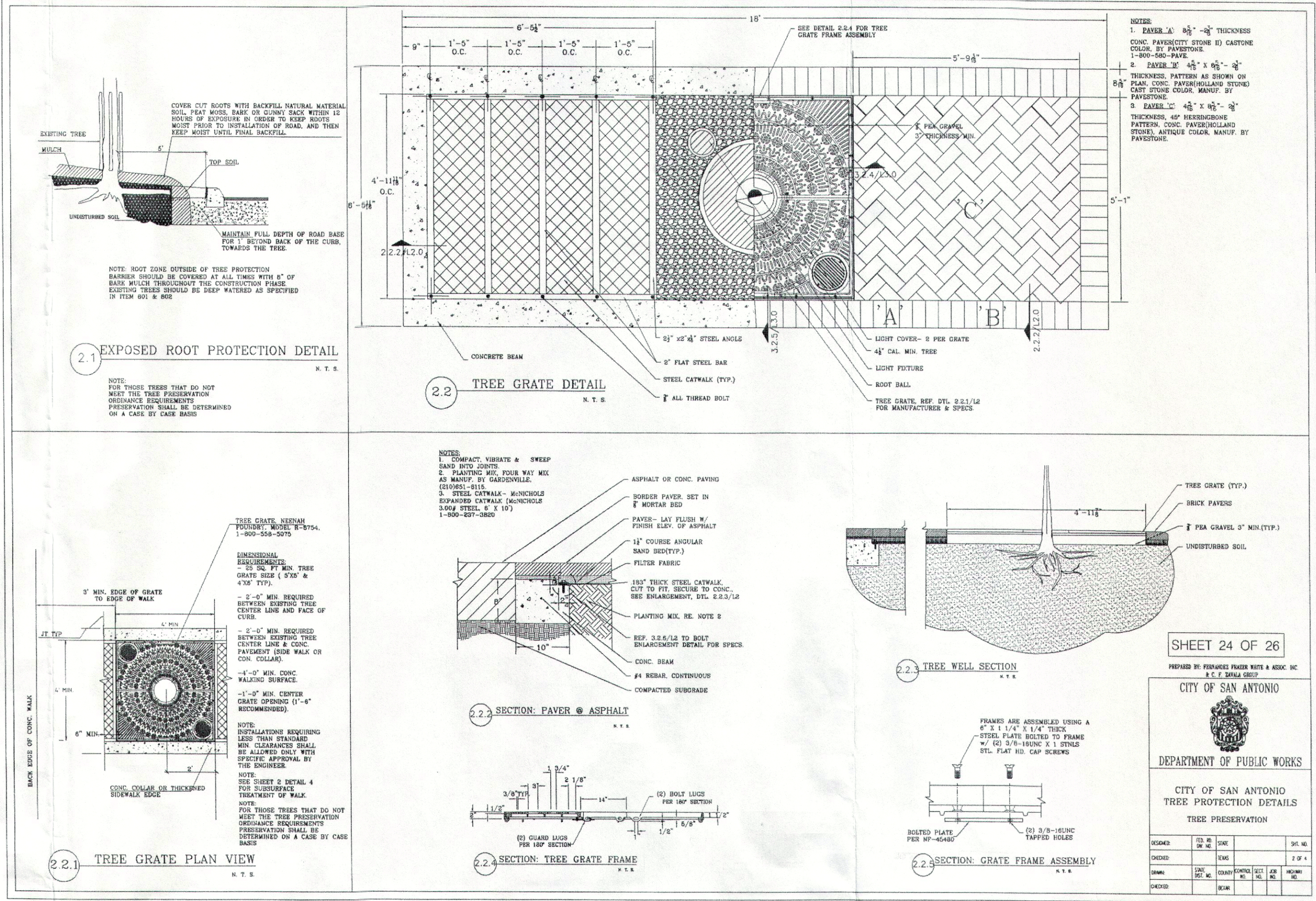
5301 SHELLEY ROAD SUITE 100
GROESBECK, TEXAS 75845
PHONE: 832.249.6060
OFFICE: 832.248.2244
FAX: 832.249.6060
CONTACT: @MATKINHOVER.COM

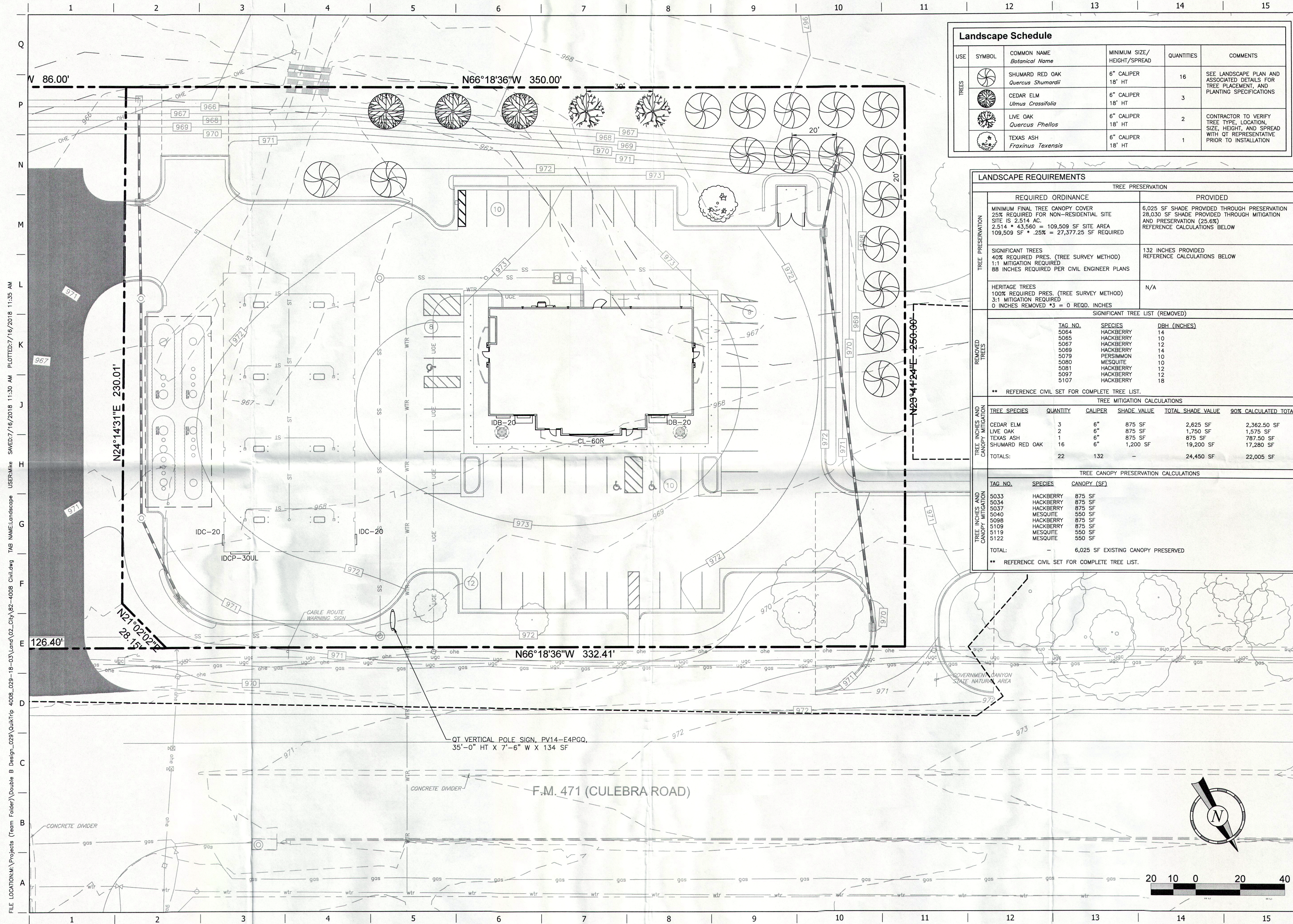
TEXAS REGISTERED ENGINEERING FIRM F-004512 SURVEYING FIRM F-1022000





FOR
QUIK-TRIP NO. 4008
SAN ANTONIO, TEXAS

FIGURE 1.0

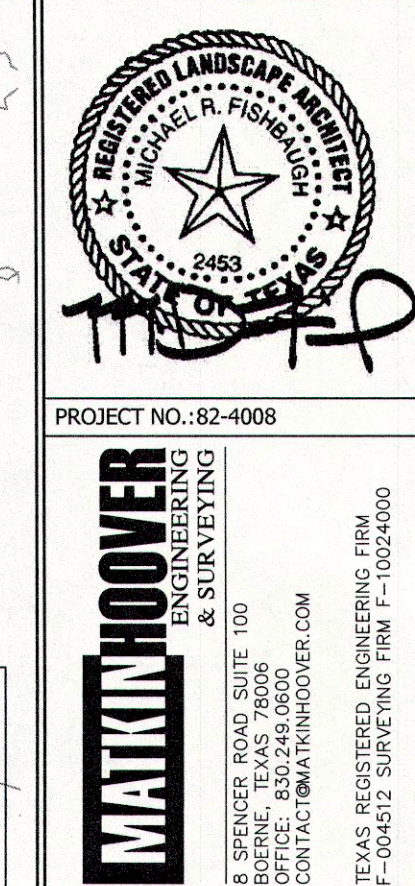
JOB NO.	2941.00
DESIGNED BY:	XV
DRAWN BY:	GSC
CHECKED BY:	JJV
SHEET #	1 OF 2



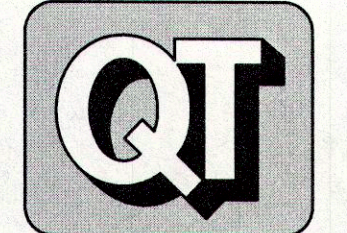


Landscape Schedule					
USE	SYMBOL	COMMON NAME <i>Botanical Name</i>	MINIMUM SIZE/ HEIGHT/SPREAD	QUANTITIES	COMMENTS
TREES		SHUMARD RED OAK <i>Quercus Shumardii</i>	6" CALIPER 18' HT	16	SEE LANDSCAPE PLAN AND ASSOCIATED DETAILS FOR TREE PLACEMENT, AND PLANTING SPECIFICATIONS
		CEDAR ELM <i>Ulmus Crassifolia</i>	6" CALIPER 18' HT	3	
		LIVE OAK <i>Quercus Phellos</i>	6" CALIPER 18' HT	2	CONTRACTOR TO VERIFY TREE TYPE, LOCATION, SIZE, HEIGHT, AND SPREAD WITH QT REPRESENTATIVE PRIOR TO INSTALLATION
		TEXAS ASH <i>Fraxinus Texensis</i>	6" CALIPER 18' HT	1	

LANDSCAPE REQUIREMENTS						
		TREE PRESERVATION				
		REQUIRED ORDINANCE		PROVIDED		
TREE PRESERVATION		MINIMUM FINAL TREE CANOPY COVER 25% REQUIRED FOR NON-RESIDENTIAL SITE SITE IS 2,514 AC. 2,514 * .43,560 = 109,509 SF SITE AREA 109,509 SF * .25% = 27,377.25 SF REQUIRED		6,025 SF SHADE PROVIDED THROUGH PRESERVATION 28,030 SF SHADE PROVIDED THROUGH MITIGATION AND PRESERVATION (25.6%) REFERENCE CALCULATIONS BELOW		
		SIGNIFICANT TREES 40% REQUIRED PRES. (TREE SURVEY METHOD) 1:1 MITIGATION REQUIRED 88 INCHES REQUIRED PER CIVIL ENGINEER PLANS		132 INCHES PROVIDED REFERENCE CALCULATIONS BELOW		
		HERITAGE TREES 100% REQUIRED PRES. (TREE SURVEY METHOD) 3:1 MITIGATION REQUIRED 0 INCHES REMOVED *3 = 0 REQ. INCHES		N/A		
SIGNIFICANT TREE LIST (REMOVED)						
REMOVED TREES		TAG NO.	SPECIES	DBH (INCHES)		
		5064	HACKBERRY	14		
		5065	HACKBERRY	10		
		5067	HACKBERRY	12		
		5069	HACKBERRY	14		
		5079	PERSIMMON	10		
		5080	MESQUITE	10		
		5081	HACKBERRY	12		
		5097	HACKBERRY	12		
		5107	HACKBERRY	18		
** REFERENCE CIVIL SET FOR COMPLETE TREE LIST.						
TREE MITIGATION CALCULATIONS						
TREE INCHES AND CANOPY MITIGATION	TREE SPECIES	QUANTITY	GAUPEIR	SHADE VALUE	TOTAL SHADE VALUE	90% CALCULATED TOTAL
	CEDAR ELM	3	6"	875 SF	2,625 SF	2,362.50 SF
	LIVE OAK	2	6"	875 SF	1,750 SF	1,575 SF
	TEXAS ASH	1	6"	875 SF	875 SF	787.50 SF
	SHUMARD RED OAK	16	6"	1,200 SF	19,200 SF	17,280 SF
	TOTALS:	22	132	-	24,450 SF	22,005 SF
TREE CANOPY PRESERVATION CALCULATIONS						
TREE INCHES AND CANOPY MITIGATION	TAG NO.	SPECIES	CANOPY (SF)			
	5033	HACKBERRY	875 SF			
	5034	HACKBERRY	875 SF			
	5037	HACKBERRY	875 SF			
	5040	MESQUITE	550 SF			
	5098	HACKBERRY	875 SF			
	5109	HACKBERRY	875 SF			
	5119	MESQUITE	550 SF			
5122	MESQUITE	550 SF				
TOTAL:				-	6,025 SF EXISTING CANOPY PRESERVED	
** REFERENCE CIVIL SET FOR COMPLETE TREE LIST.						



QuikTrip No. 4008
CULEBRA (FM 471) & GALM
SAN ANTONIO, TX



© COPYRIGHT QUIKTRIP CORPORATION 2011
ANY UNAUTHORIZED USE, REPRODUCTION,
PUBLICATION, DISTRIBUTION, OR SALE IN
WHOLE OR IN PART, IS STRICTLY FORBIDDEN.

PROTOTYPE: P-94 (07/16/18)
DIVISION:
VERSION: 001
DESIGNED BY: BB MF
DRAWN BY: BB
REVIEWED BY: MF

[illegible]

SHEET TITLE:

LANDSCAPE PLAN

SHEET NUMBER:

L100

