

Public Hearing #1

Annexation Election for Areas Adjacent to Military Bases

August 29, 2018

Bridgett White, AICP, Director
Planning Department





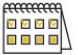
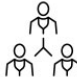
2017 Legislative Changes – Senate Bill 6

■ Senate Bill (S.B.) 6 became effective December 1, 2017

- Requires cities located in counties with more than 500,000 residents (Tier 2 cities) to obtain landowner or voter approval of the proposed annexation through an election process

WHO CAN BE ANNEXED?

Texas cities are able to annex properties to expand their city limits under certain conditions:

-  Property must be in the city's ETJ.
-  The property must be contiguous to the city's existing city limits.
-  If a community has 100 homes or more, the city must place the community in a three-year annexation plan.
-  As of Dec. 1, 2017, residents of an area being annexed must approve the annexation if they reside in a county of 500,000 residents or more.

DID YOU KNOW?

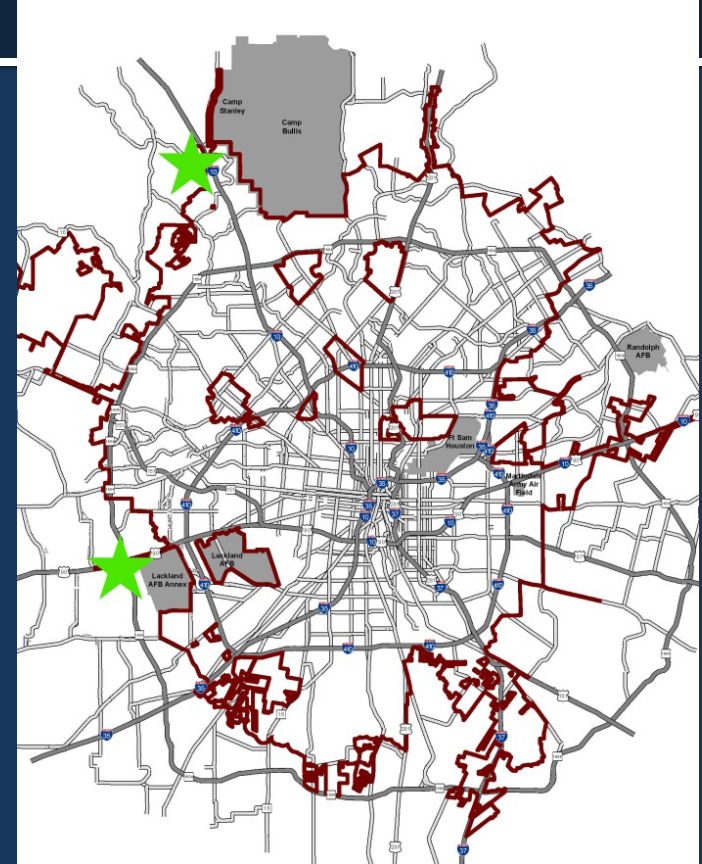
The Texas Legislature passed Senate Bill 6 in August. SB 6 states citizens in a city's extraterritorial jurisdiction must be allowed to vote on annexation. The bill went into effect Dec. 1.

■ Sec. 43.0117 Authority of Municipality to Annex Area Near Military Base

- A municipality may annex for full or limited purposes.....any part of the area located within 5 miles of the boundary of a military base in which an active training program is conducted
- Proposition to be stated to allow voters to choose between either annexation or providing the municipality with the authority to adopt and enforce an ordinance regulating the land use in the area, as recommended by the most recent joint land use study (JLUS)

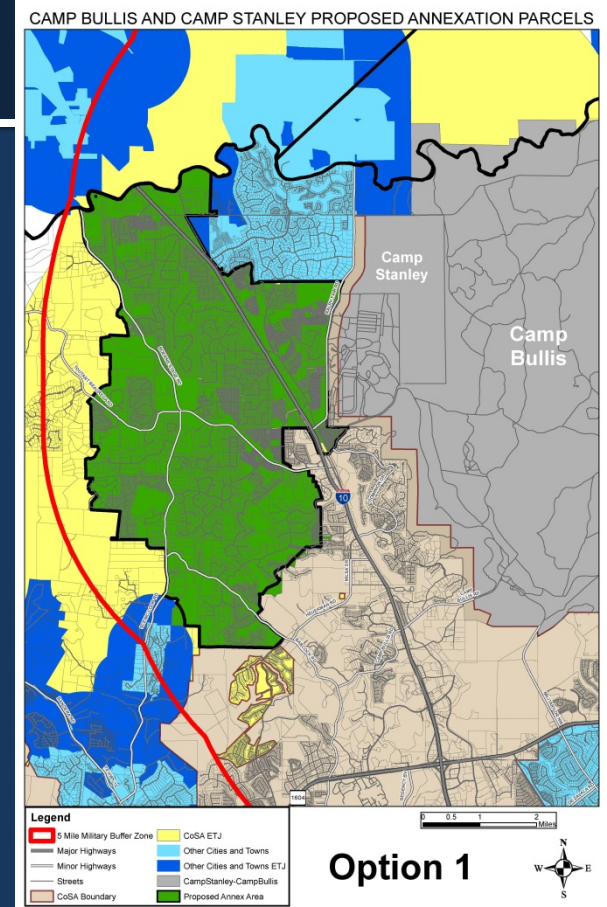
Areas Proposed for Annexation

- Camp Bullis and Camp Stanley Military Bases
 - West of Camp Bullis and Camp Stanley along the IH10 W Corridor
- Lackland AFB – Medina Training Annex
 - West of the Lackland AFB – Medina Training Annex along the W Loop 1604 Corridor



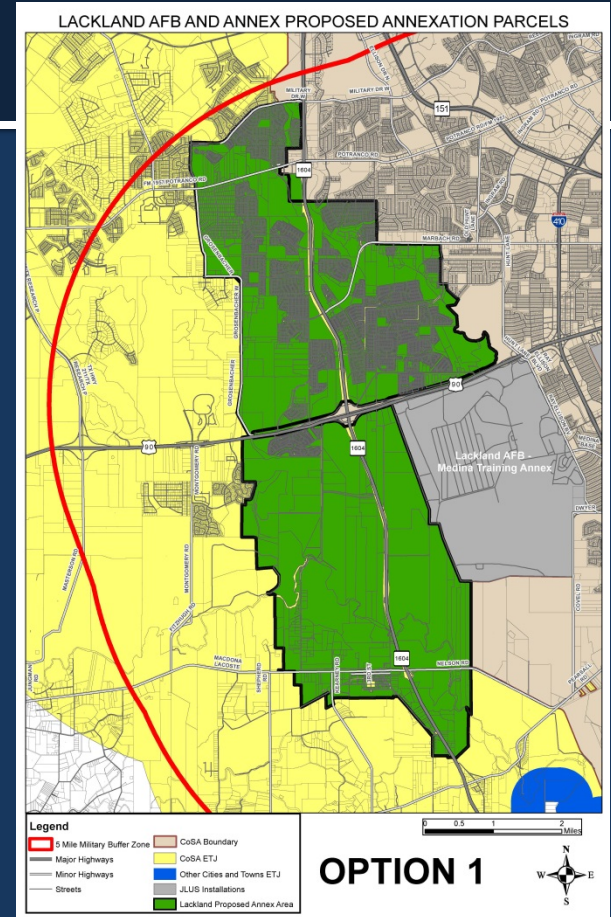
Camp Bullis and Camp Stanley Area

- Size – 22.39 sq. miles (14,332 acres)
- Estimated Population – 18,780
- Number of Single-Family Housing Units – 7,223
- Percent vacant – 36%



Lackland AFB and Medina Annex Area

- Size – 20.27 sq. miles (12,974 acres)
- Estimated Population – 40,205
- Number of Single-Family Housing Units – 15,048
- Percent vacant – 59%



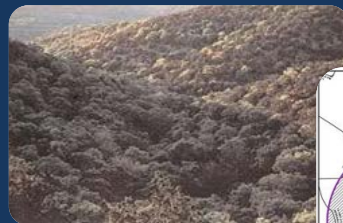
Should Voters Vote For “Annexation” on the Ballot

- City would initiate limited purpose annexation proceedings
 - Receive no City services for 3 years
 - Pay no City taxes
 - May vote in city elections except bond elections
- Before end of 3 years, decision to annex for full purpose annexation must be approved (effective November 2021)
 - City provides full municipal services
 - Taxes assessed
 - City ordinances and regulations enforced
 - May vote in all City elections and run for office



However, Should Voters Vote For “Land Use Regulations” on the Ballot

- No annexation
- Allows adoption and enforcement of ordinances regulating land use in the manner recommended by the most recent Joint Land Use Study
- Authority to adopt and impose fees, fines and other applicable charges.



*Natural
Habitats*



Lighting



Noise



Height



Compatible Land Use

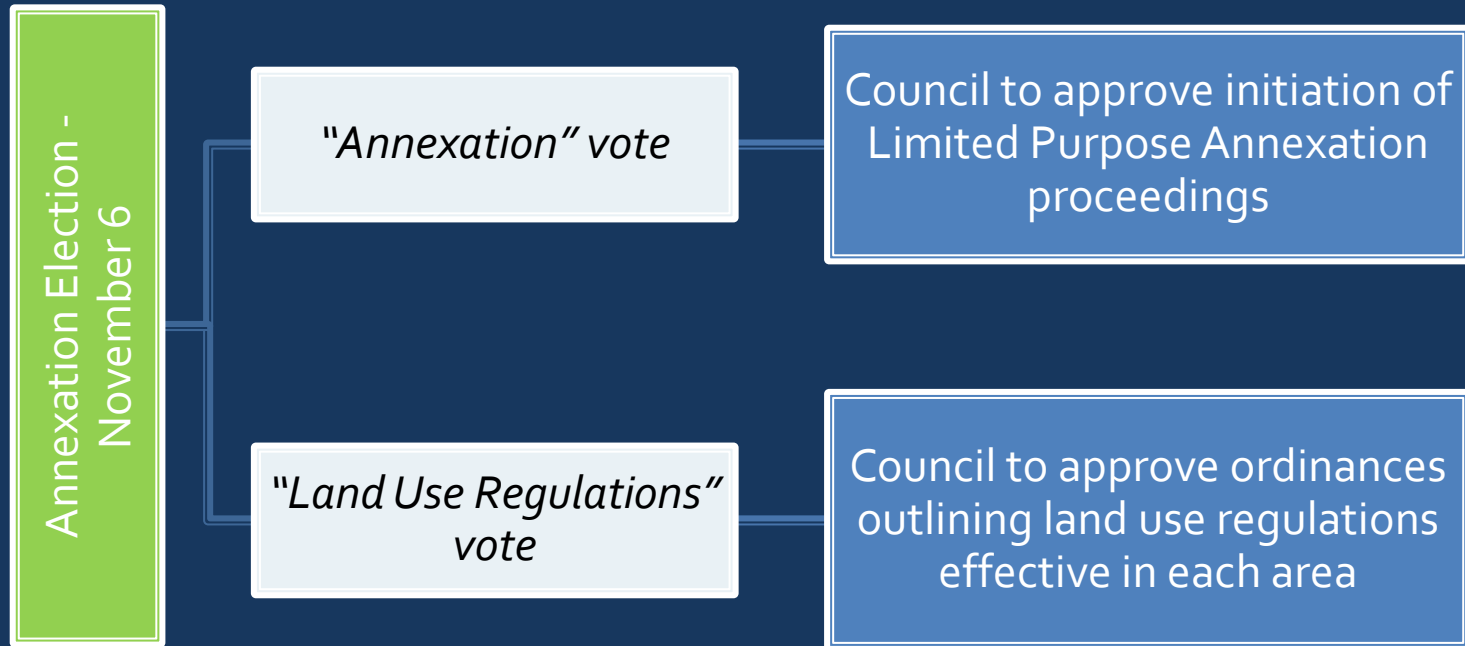
Land Use Regulations

	<u><i>Camp Bullis and Camp Stanley</i></u>	<u><i>Lackland AFB and Medina Annex</i></u>
Compatible Land Use - Encroachment - Natural Habitats	Enforcement of land use densities in accordance with the adopted land use plan Permitting by City of single-family residential structures Enhanced Permitting by County of multi-family and commercial structures	
Natural Resource Protection	Enforcement of Tree Ordinance and Water Quality Ordinance	
Lighting	Enforcement of the Military Lighting Overlay District	
Noise	Currently not applicable in the County	Enforcement of the Military Sound Attenuation Overlay (MSAO) in areas of high noise
Height	Currently not applicable in the County	Enforcement of the Airport Hazard Overlay District (AHOD)

Election Notifications and Meetings

	<u><i>Required</i></u>	<u><i>Additional</i></u>
August 9, 2018	Notice to affected property owners	Notice to registered voters
	Notice to public school district and public entities or political subdivision	
August 29, 2018	First Public Hearing	
September 12, 2018	Second Public Hearing	
September 25, 2018		Community Meeting – Camp Bullis area
September 27, 2018		Community Meeting – Lackland area
October 2, 2018		Community Meeting – Camp Bullis area
October 4, 2018		Community Meeting – Lackland area
October 16, 2018	First notice of election	
October 21, 2018	Second notice of election	

Following the Election...



Public Hearing #1

Annexation Election for Areas Adjacent to Military Bases

August 29, 2018

Bridgett White, AICP, Director
Planning Department

