



PARKS & RECREATION  
SAN ANTONIO

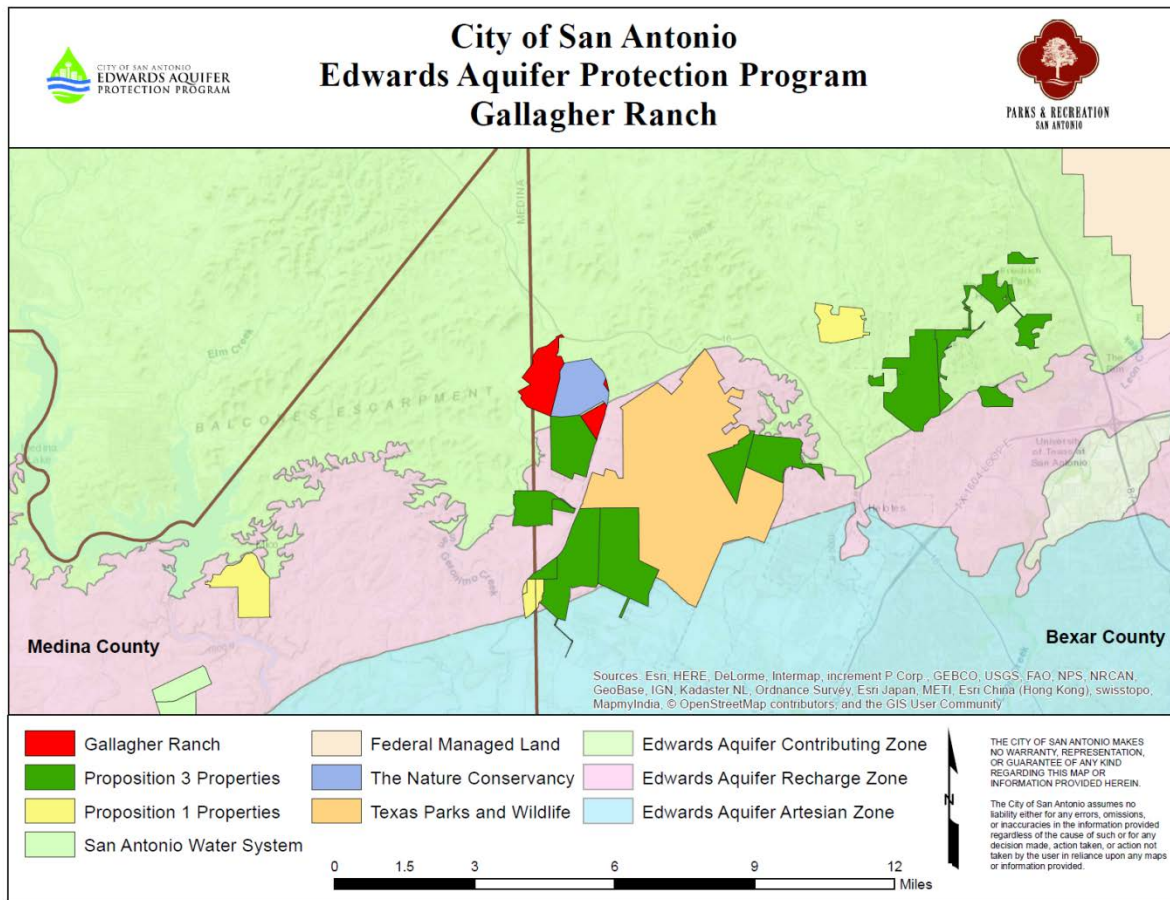
# Edwards Aquifer Protection Program Conservation Easement Acquisitions

City Council  
September 13, 2018  
Parks and Recreation Department

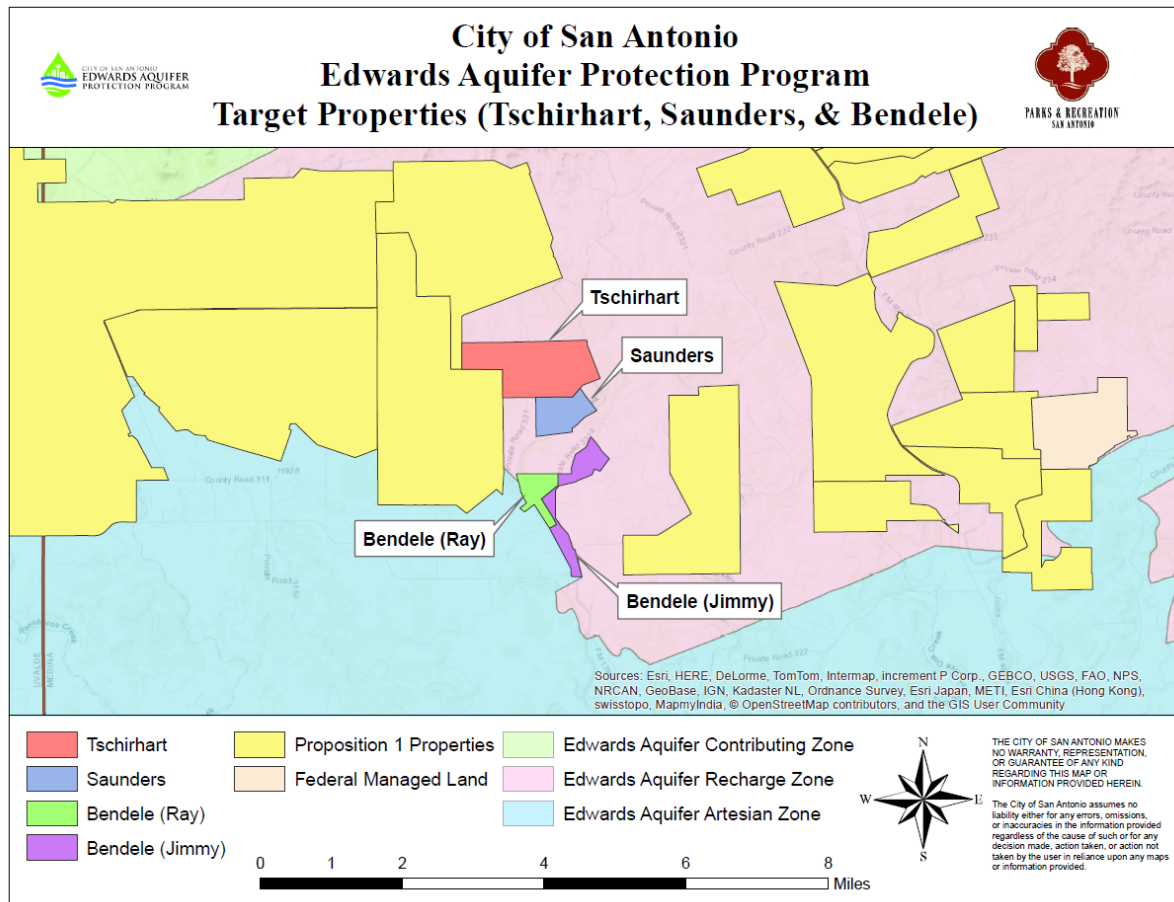
# Conservation Easement Acquisitions

Property	County	Acres	CE Cost	CE #
Gallagher Ranch	Bexar	135.4	\$1,408,607.75	79
Gallagher Ranch	Bexar/Medina	606.487	\$5,704,896.55	80
3T's Heritage Ranch	Medina	766.24	\$996,806.48	81
Saunders Ranch	Medina	236.63	\$369,299.18	82
Jimmy Bendele Ranch	Medina	248.35	\$382,834.49	83
Ray Bendele Ranch	Medina	153.7	\$287,116.34	84
<b>TOTALS</b>		<b>2,146.807</b>	<b>\$9,149,560.79</b>	

# Increases Protected Lands by 2,147 acres

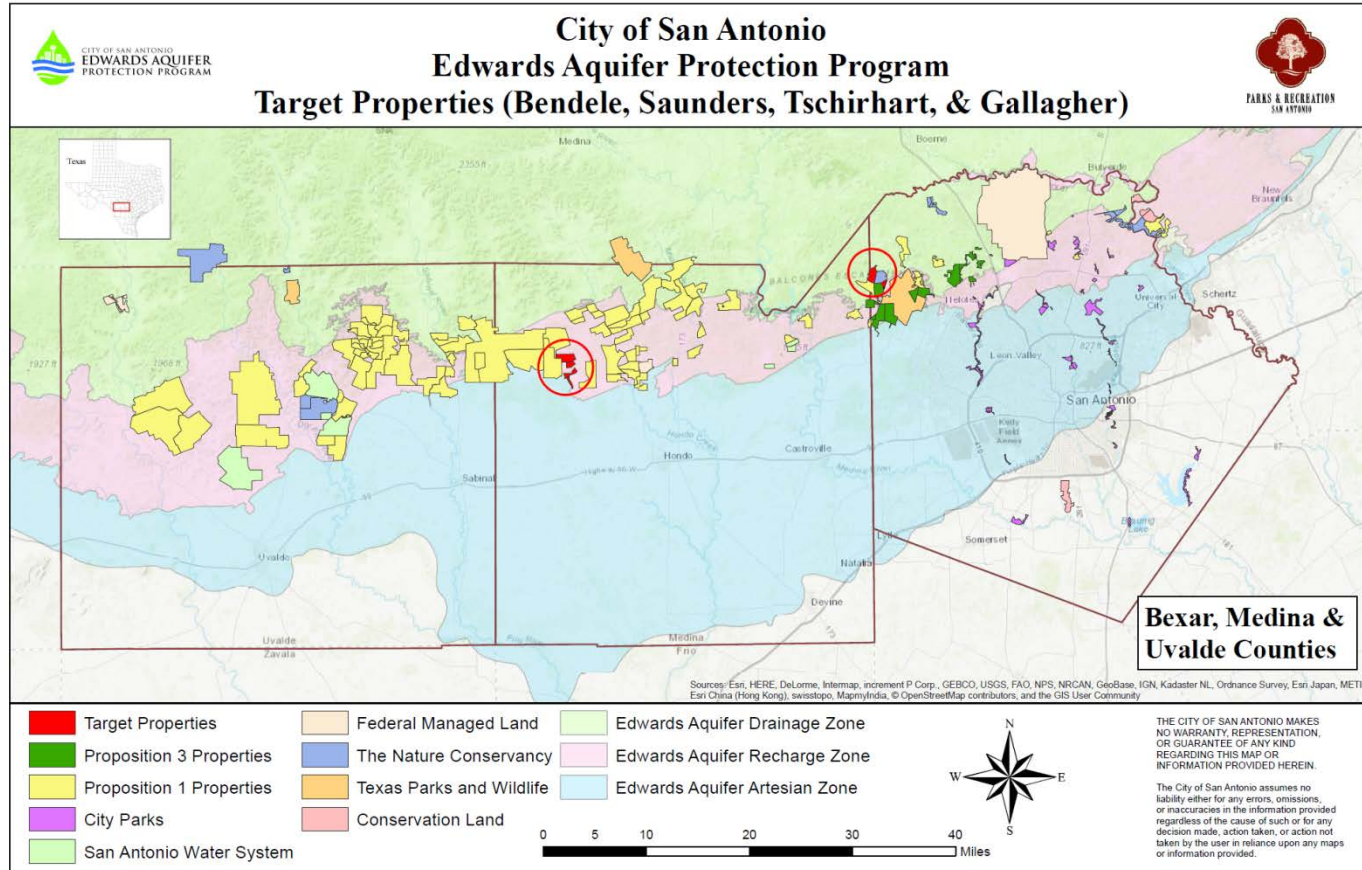


# Increases Protected Lands by 2,147 acres





# Total Land Protected = 154,906 acres



# Acquisition Benefits

- Properties located over the Recharge and Contributing Zones
- Important recharge features on property
- Moderate-to-high water quantity and quality benefits
- Results in cumulative protection of over 55,000 acres in Medina County and nearly 10,000 acres in Bexar County





# Recommendation

- Staff recommends approval