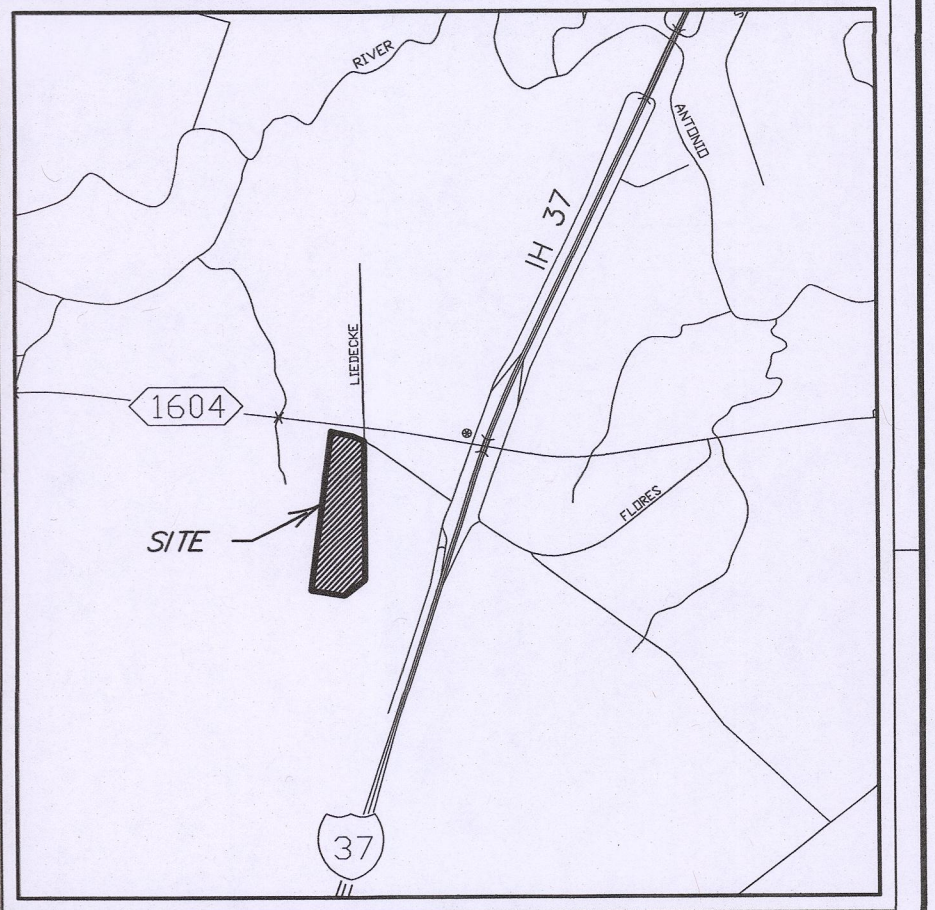
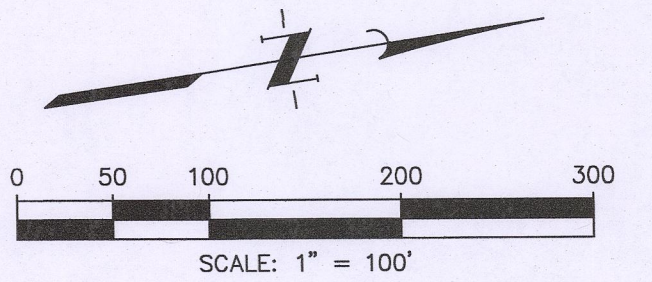


K:\3_SAP\PROJECTS\11608_Investment & Development Ventures, LLC\0002-01_FMC\CON\Exhibits\EXH-TREE PRESERVATION 8.dwg 11c:September 05, 2018



LOCATION MAP
SCALE 1" = 3,000'



LEGEND:

- EXISTING TREES TO BE PRESERVED
- FLOOD PLAIN TREES TO BE MITIGATED
- 30-FT FLOOD PLAIN BUFFER TREES TO BE MITIGATED

TREE PROTECTION NOTES:

- A root protection zone will be established around each tree or any vegetation to be preserved to meet the landscape or tree preservation ordinances. The root protection zone shall be an area defined by the radius extending out ward from the trunk of the tree a distance of one (1) linear foot for each inch diameter inch at breast height (4.5 ") of the tree. a 10-inch diameter tree will have a 10 foot radius root protection zone.
- No work shall begin where tree protection fencing has not been completed and approved. Tree protection fencing shall be installed, maintained and repaired by the contractor during construction. The fencing will be a minimum of 4' height.
- All roots larger than one-inch in diameter are to be cut cleanly and oak wounds painted within 30 minutes.
- Exposed roots shall be covered at the end of the work day using techniques such as covering with soil, mulch or wet burlap.
- No equipment, vehicles or materials shall be operated or stored within the root protection zone. No clean-out areas will be constructed so that the material will be in or migrate to the root protection zone.
- No grade change more than 3" is allowed within the root protection zone.
- Roots or branches in conflict with construction shall be cut cleanly according to proper pruning methods. All oak wounds shall be painted within 30 minutes to prevent oak wilt infection.
- Any tree removal shall be approved by the city arborist (207-0278).
- Trees which are damaged or lost due to the contractor's negligence during construction shall be mitigated.
- Trees must be maintained in good health throughout the construction process. Maintenance may include watering the root protection zone and or washing foliage.
- No wires, nails or other materials may be attached to protected trees.

HERITAGE TREE TABLE				
TAG #	SIZE (IN.)	TYPE	CONDITION	SAVE/REMOVE
L-816	49"	LIVE OAK	GOOD	REMOVE
L-817	39"	LIVE OAK	GOOD	REMOVE
L-818	35"	LIVE OAK	POOR	REMOVE
L-828	34"	LIVE OAK	GOOD	REMOVE
L-829	30"	BLACKJACK OAK	GOOD	SAVE
L-830	40"	LIVE OAK	GOOD	SAVE
L-831	26"	POST OAK	GOOD	REMOVE
L-832	26"	POST OAK	GOOD	REMOVE
L-833	30"	POST OAK	GOOD	REMOVE
L-834	24"	POST OAK	GOOD	REMOVE
L-835	24"	POST OAK	GOOD	REMOVE
	32"	POST OAK	GOOD	SAVE
	29"	POST OAK	GOOD	SAVE
	31"	POST OAK	GOOD	SAVE

HERITAGE TREE PRESERVATION SUMMARY

TOTAL INCHES = 449
INCHES REMOVED = 287
INCHES PRESERVED = 162

PERCENTAGE PRESERVED = 162/449 = 36.08%

TREE PRESERVATION SUMMARY			
Gross Tract Area =	1,579,485 SF		
25% Gross Tract Area =	394,871 SF		
Inside 100-Year Flood Plain			
Existing Tree Canopy to Remain	0 SF		
Existing Tree Canopy to be Removed	3,270 SF		
Existing Tree Canopy Total		3,270 SF	
Percentage of Area Preserved*	0.0%		
* See Mitigation Table to the right for mitigation summary			
Inside 30-Foot Floodplain Buffer			
Existing Tree Canopy to Remain	0 SF		
Existing Tree Canopy to be Removed	3,460 SF		
Existing Tree Canopy Total		3,460 SF	
Percentage of Area Preserved*	0.0%		
* See Mitigation Table to the right for mitigation summary			
Outside Area Remaining			
Existing Tree Canopy to Remain	261,114 SF		
Existing Tree Canopy to be Removed	487,169 SF		
Existing Tree Canopy Total		748,283 SF	
Percentage of Area Preserved	34.9%		
* See Mitigation Table to the right for mitigation summary			

NOTE: Tree canopy within TxDOT R.O.W. reservation per Plat #160597 does not count towards tree mitigation calculations.

TREE MITIGATION SUMMARY TABLE			
AREA	100-YEARFLOOD PLAIN	3,270 SF	
AREA	30FT FLOOD PLAIN BUFFER	3,460 SF	
AREA	OUTSIDE MITIGATION	785 SF	
TOTAL		7,515 SF	
MITIGATION CALCULATIONS			
TOTAL MITIGATION:	143.4 DIAMETER-INCHES		
	@875 SF SHADE VALUE		
MITIGATION COST:	\$28,674.12		
NOTE: CALCULATED FOR 100% MITIGATION FOR FLOODPLAIN AND FLOODPLAIN BUFFER; 35% MITIGATION FOR AREAS OUTSIDE FLOODPLAIN FLOODPLAIN BUFFER			
[USING FORMULA GIVEN IN CITY OF SAN ANTONIO UNIFIED DEVELOPMENT CODE §35-523(F)-28]			

DEVELOPMENT SERVICE
RECEIVED
2018 SEP -5 PM 3:18

RECEIVED
SEP 05 2018
BY:.....

LOT 4 IVY SUBDIVISION - 36.26 Ac.

TREE CANOPY
PRESERVATION PLAN

SHEET 1 OF 1

PLAT No. 910060

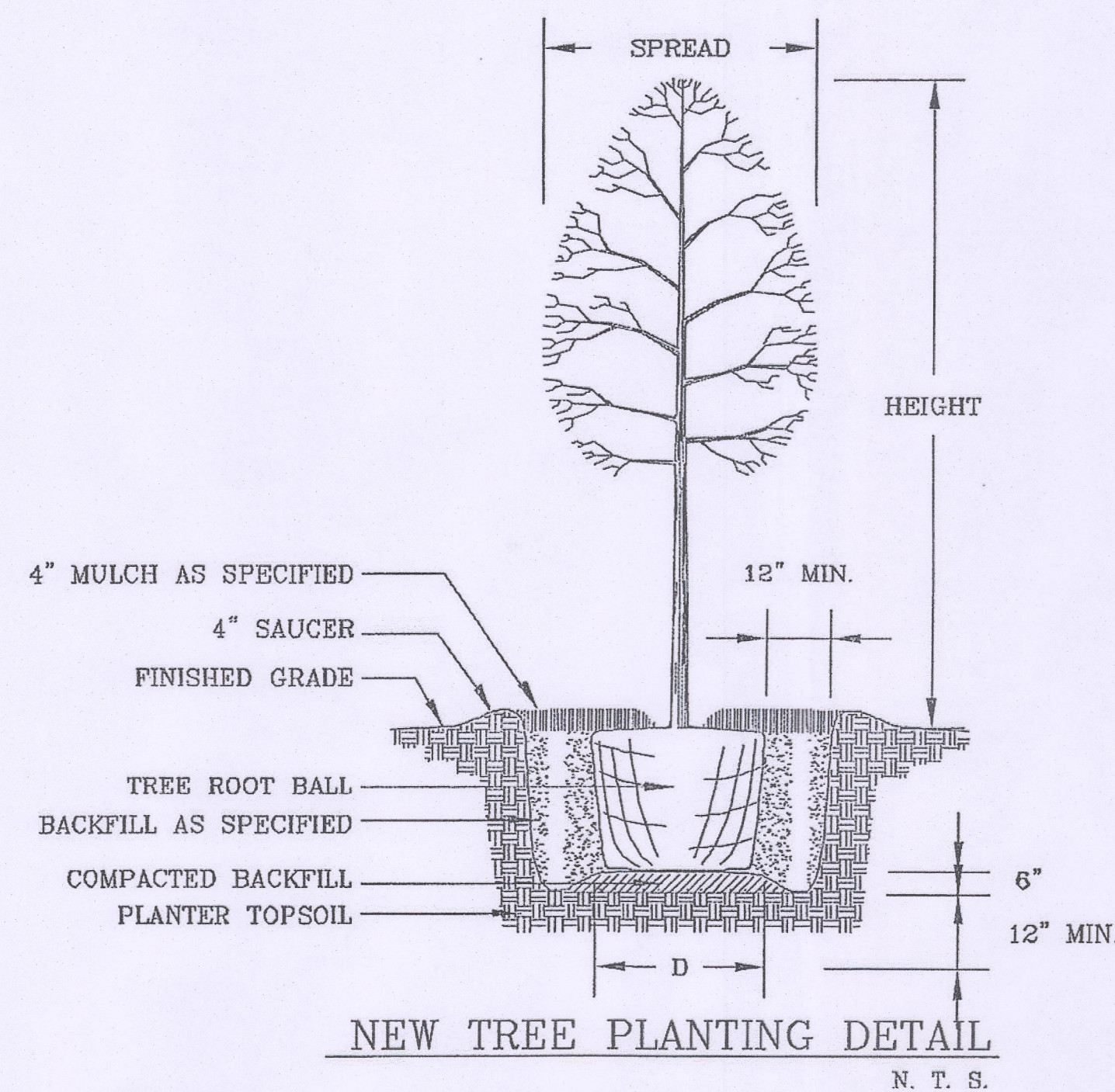
8/28/2018

SIZE	TYPE	CONDITION
49"	Live Oak	Good
39"	Live Oak	Good
35"	Live Oak	Poor
34"	Live Oak	Good
26"	Post Oak	Good
26"	Post Oak	Good
30"	Post Oak	Good
24"	Post Oak	Good
24"	Post Oak	Good

287" To Be Mitigated At 3:1 Ratio - 861" Total Mitigation Inches

Total Site Area - 1,579,485 SF x 25% = 394,871 Sf Total Tree Canopy required
100% Credit for Existing trees

As referenced on the Tree Preservation Plan		284888 SF Net Tree Canopy	18.04%
90% Credit for New Trees (4" Caliper) - no more than 25% of new trees of same species			
54	4" CAL Live Oak x 875 SF x 90%	42525 SF Net Tree Canopy	2.69%
54	4" CAL Shumard Red Oak x 1200 SF x 90%	58320 SF Net Tree Canopy	3.69%
54	4" CAL Cedar Elm x 875 SF x 90%	42525 SF Net Tree Canopy	2.69%
27	4" CAL Bur Oak x 1200 SF x 90%	29160 SF Net Tree Canopy	1.85%
27	4" CAL Bald Cypress x 1200 SF x 90%	29160 SF Net Tree Canopy	1.85%
216 4" CAL Total new trees = 864 Total inches		486578 SF Net Tree Canopy Provided :	30.81%



LIVE OAK

SHUMARD RED OAK

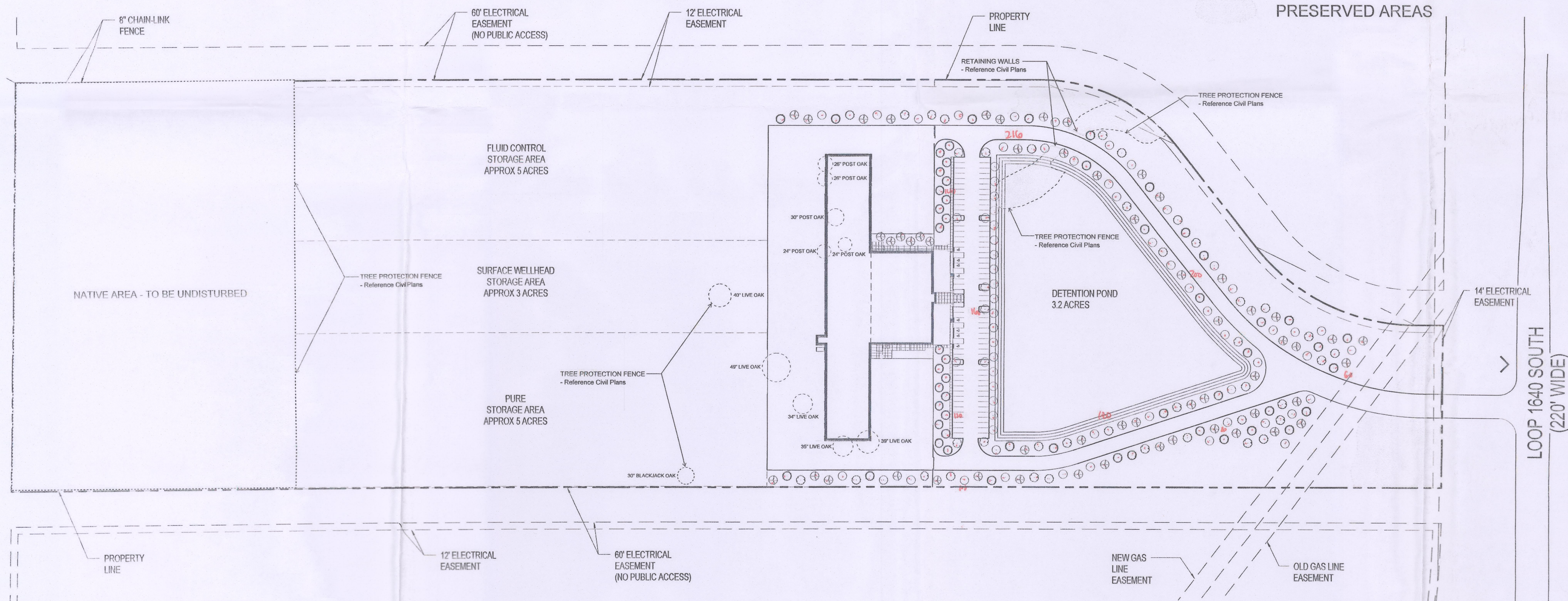
CEDAR ELM

BUR OAK

BALD CYPRESS

PRESERVED HERITAGE TREES

REMOVED HERITAGE TREES



NOTE: ALL NEW TREES WILL BE WATERED BY MEANS OF AN AUTOMATIC IRRIGATION SYSTEM WITH TWO (2) - .5 GPM TREE BUBBLERS AT THE BASE OF EACH TREE - SEE TREE BUBBLER PLAN.

SCALE: 1" = 100'

PROJECT TITLE

FMC SAN ANTONIO

3800 S LOOP 1604,
SAN ANTONIO, TX 78254

A PROJECT FOR


FMC Technologies

GENERAL NOTES

TREE FENCING INSPECTION
 REQUIRED BEFORE SITE WORK
 CALL 207-1111 TO SCHEDULE

TREE PRESERVATION
APPROVED

DATE 6.24.14
BY [Signature]
AD# 19792



ISS GROUND CONTROL

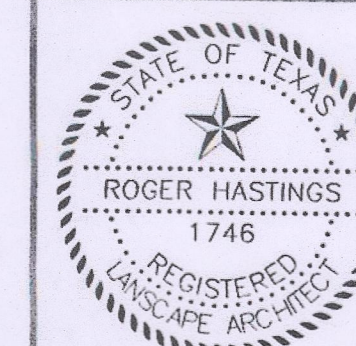
[illegible]

PROJECT NO:	131020
DRAWN BY:	REH
CHECKED BY:	REH
SHEET TITLE	

LANDSCAPE
TREE PLANTING PLAN

SEAL

SHEET NUMBER



LP101