

HISTORIC AND DESIGN REVIEW COMMISSION

September 19, 2018

HDRC CASE NO: 2018-448
ADDRESS: 112 AUDITORIUM CIRCLE
LEGAL DESCRIPTION: NCB 412 BLK 5 LOT S 47.4 OF 17
ZONING: D, HS
CITY COUNCIL DIST.: 1
LANDMARK: First Baptist Church Ministries
APPLICANT: Mike Fresher
OWNER: Bexar County Performing Arts Center
TYPE OF WORK: Installation of a mural
APPLICATION RECEIVED: September 05, 2018
60-DAY REVIEW: November 04, 2018
REQUEST:

The applicant is requesting conceptual approval of mural size and placement on the north façade of the historic structure at 112 Auditorium Circle. The north wall of this structure is adjacent to a surface parking lot and a pedestrian walkway.

APPLICABLE CITATIONS:

UDC Section Division 5. – Public Art San Antonio (PSAS)

The purpose of Public Art San Antonio (PASA) is to support a public process for incorporating artist services and artworks in the design of civic spaces and capital projects and to define the City of San Antonio's policies and guidelines for acquiring and commissioning art of the highest standards which shall enrich the quality of life for all residents and visitors of San Antonio.

The goals of Public Art San Antonio (PASA) are to create a better visual environment for the residents and visitors of San

Antonio, to integrate the design work of artists into the development of city eligible capital improvement projects, and to promote tourism and the economic vitality of the city through the enhancement of public spaces. Public Art San Antonio (PASA) serves the entire City of San Antonio as the public art program for all city departments, capital projects and public art initiatives, and is a division of the Office of Cultural Affairs (OCA). Public Art San Antonio (PASA) specifically seeks:

To encourage the selection of artists at the beginning stages of each project who can work successfully as members of the project design team, and to encourage collaboration among all arts and building disciplines;

To foster quality design and the creation of an array of artwork in all media, materials and disciplines that best respond to the distinctive characteristics of each project site and the community that it serves;

To select experienced artists who represent the diverse cultural landscape of San Antonio;

To encourage the selection of design enhancements that are accessible to the public and respect the historical resources and mobility of the citizenry;

To encourage artists, design enhancements and programs for open spaces, parks, infrastructure and facilities that contribute to neighborhood revitalization and enhance the quality and pride of neighborhoods in the city;

To encourage participation by citizens in the process of acquiring and commissioning of design enhancements;

To encourage the role of public art and design enhancements in enhancing economic development and cultural tourism;

To encourage the role of artists in the functional design of eligible capital improvement projects;

To exhibit art in designated city facilities for the enjoyment of the public and to heighten awareness and appreciation for local artists; and

To maintain and provide stewardship of the city public art and design enhancements collection.

Sec. 35-651. - Eligible and Ineligible Public Art and Design Enhancements.

(a) Eligible Public Art and Design Enhancements. It is the policy of the City of San Antonio that all public art and design enhancements commissioned or acquired through PASA are designed by an artist, craftsman or an artist or craftsman in collaboration with the project architect, landscape architect or engineer. Such artworks may include, but are not limited to the following:

- (1) The incremental costs of infrastructure elements, such as sound-walls, utility structures, roadway elements and other items if designed by an artist or design team that includes an artist co-designer.
- (2) Artistic or aesthetic elements of the overall architecture or landscape design if created by a professional artist or a design team that includes a professional visual artist.
- (3) Earthworks, neon, glass, mosaics, photographs, prints, calligraphy, any combination of forms of media including sound, literary elements, film, holographic images, and video systems; hybrids of any media and new genres.
- (4) Murals or portable paintings in any material or variety of materials.
- (5) Sculpture: freestanding, wall supported, or suspended; kinetic and electronic in any material or combination of materials.
- (6) Temporary artworks or installations, if such artworks serve the purpose of providing community and educational outreach purposes.
- (7) Public art and design enhancements that are an integral part of architecture, landscape architecture, and landscape design.

(b) Ineligible Public Art and Design Enhancements. Public art and design enhancements that are mass produced or of standard manufacture, such as playground equipment, fountains or statuary elements, unless incorporated into an artwork by a project artist, or reproductions, by mechanical or other means, of original artwork, except in the case of film, video, photography, printmaking or other media arts.

(c) Specifically excluded from this section is artwork in the museum collection of the San Antonio Museum of Art and the Witte Museum.

Historic Design Guidelines, Chapter 2, Guidelines for Exterior Maintenance and Alterations

2. Materials: Masonry and Stucco

A. MAINTENANCE (PRESERVATION)

i. *Paint*—Avoid painting historically unpainted surfaces. Exceptions may be made for severely deteriorated material where other consolidation or stabilization methods are not appropriate. When painting is acceptable, utilize a water permeable paint to avoid trapping water within the masonry.

iv. *Cleaning*—Use the gentlest means possible to clean masonry and stucco when needed, as improper cleaning can damage the surface. Avoid the use of any abrasive, strong chemical, sandblasting, or high-pressure cleaning method.

FINDINGS:

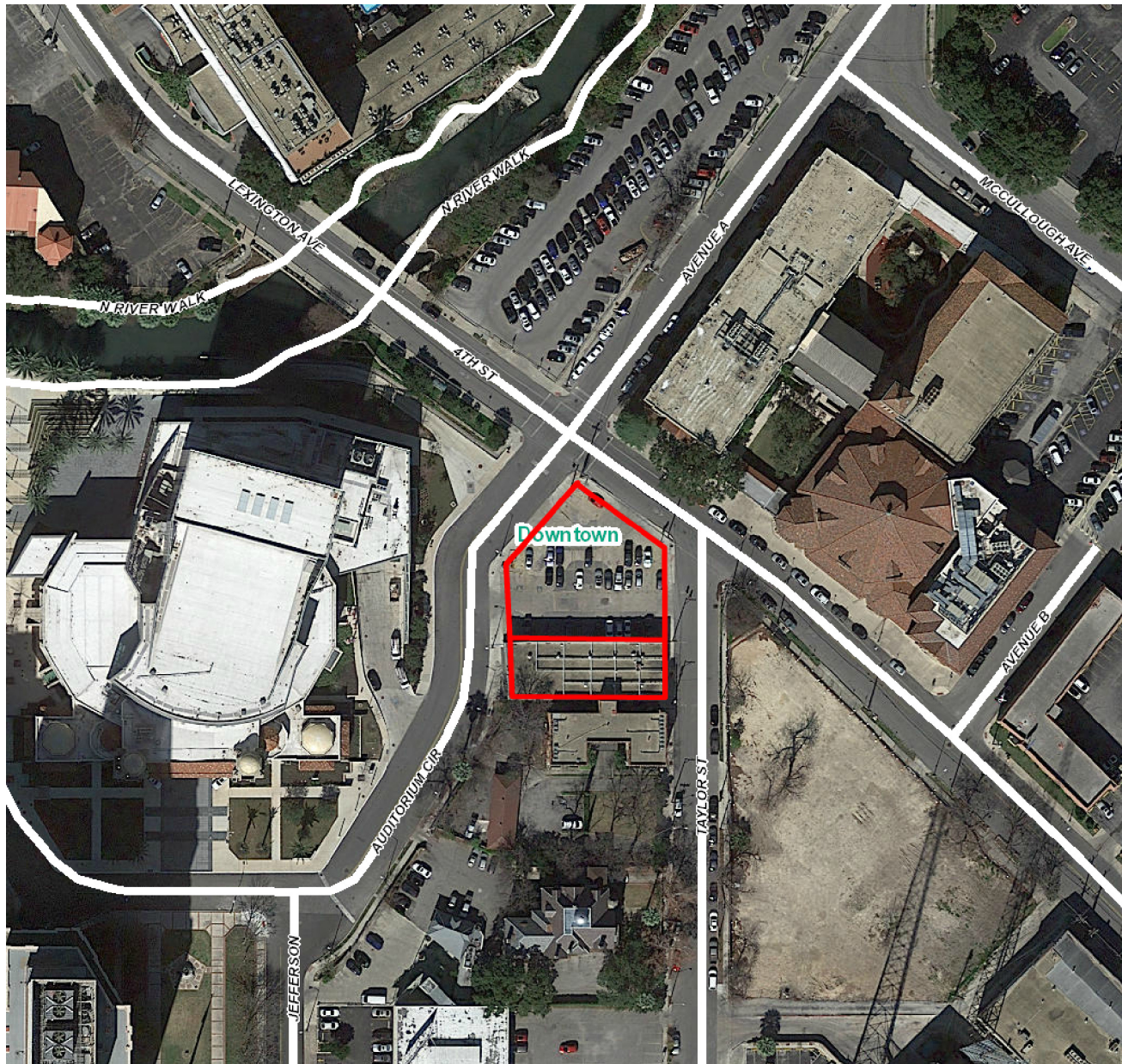
- a. The applicant is requesting conceptual approval of mural size and placement on the north façade of the historic structure at 112 Auditorium Circle. The north wall of this structure is adjacent to a surface parking lot and a pedestrian walkway.
- b. **MURAL SIZE & LOCATION** – The applicant has proposed to install the mural on the north wall of the existing, one story structure. The north wall, which is masonry is currently painted and features an overall length of 128 feet and a height of 25 feet for a total size of 3,584 square feet. Staff finds that a mural in this location is appropriate. No more than fifty (50) square feet of signage or advertising is to be included.

RECOMMENDATION:

Staff recommends approval based on findings a and b with the stipulation that no more than fifty (50) square feet of signage or advertising is included.

CASE MANAGER:

Edward Hall



lex Viewer

we ed by ArcGIS Server

Printed: Sep 1 , 2018

The City of San Antonio does not guarantee the accuracy, adequacy, completeness or usefulness of any information. The City does not warrant the completeness, timeliness, or positional, thematic, and attribute accuracy of the GIS data. The GIS data, cartographic products, and associated applications are not legal representations of the depicted data. Information shown on these maps is derived from public records that are constantly undergoing revision. Under no circumstances should GIS-derived products be used for final design purposes. The City provides this information on an "as is" basis without warranty of any kind, express or implied, including but not limited to warranties of merchantability or fitness for a particular purpose, and assumes no responsibility for anyone's use of the information.

The Tobin Center will work with our mural project consultants to design appropriate recognition. It will be in keeping with similar signage presently at The Tobin Center.

Mural Title

Participation

Tobin Center for the Performing Arts

Resident Companies

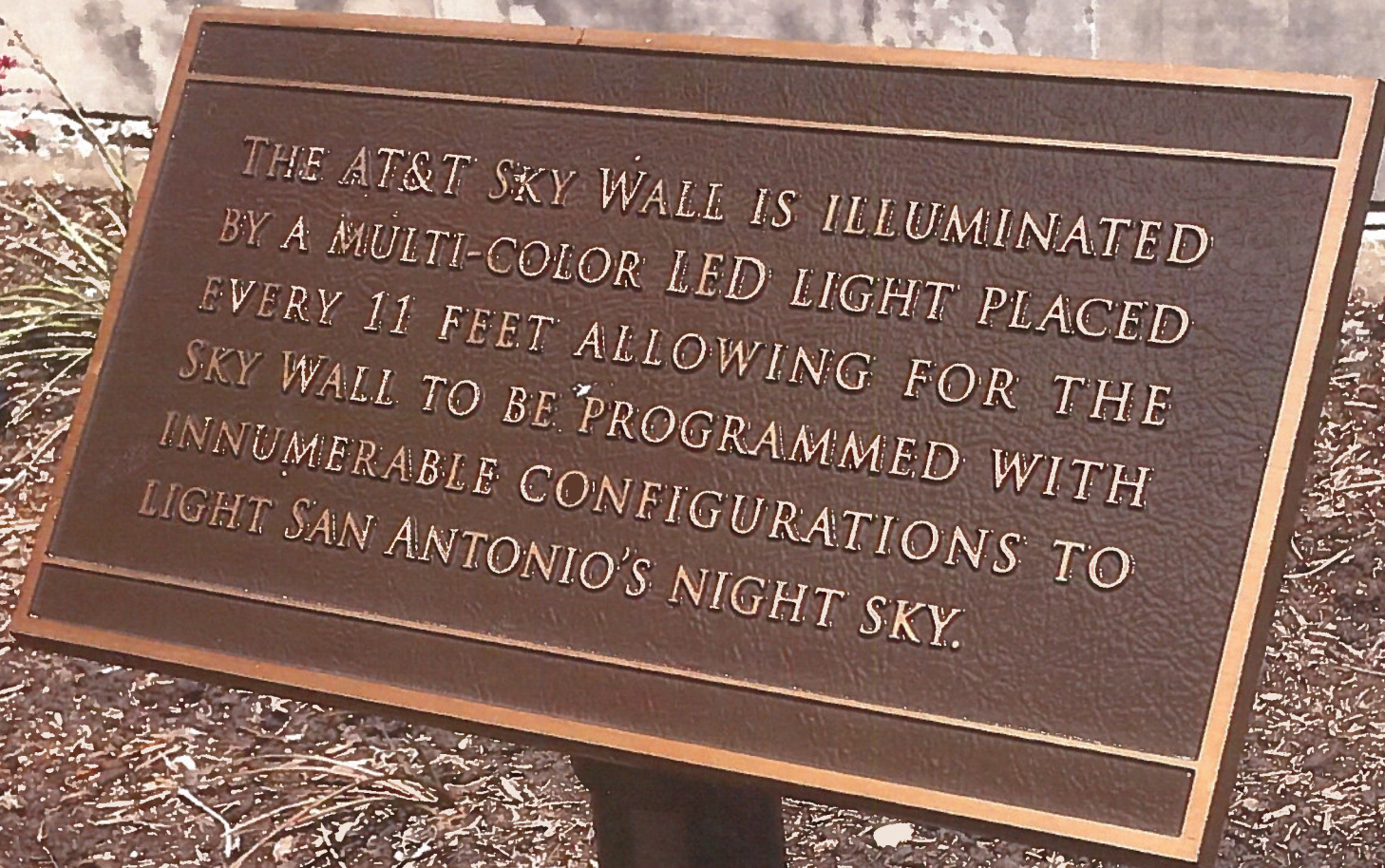
Additional Community Agencies (TBD)

This mural is dedicated to the arts
in San Antonio and is generously funded




By:

Funders TBD





THE AT&T SKY WALL IS ILLUMINATED
BY A MULTI-COLOR LED LIGHT PLACED
EVERY 11 FEET ALLOWING FOR THE
SKY WALL TO BE PROGRAMMED WITH
INNUMERABLE CONFIGURATIONS TO
LIGHT SAN ANTONIO'S NIGHT SKY.





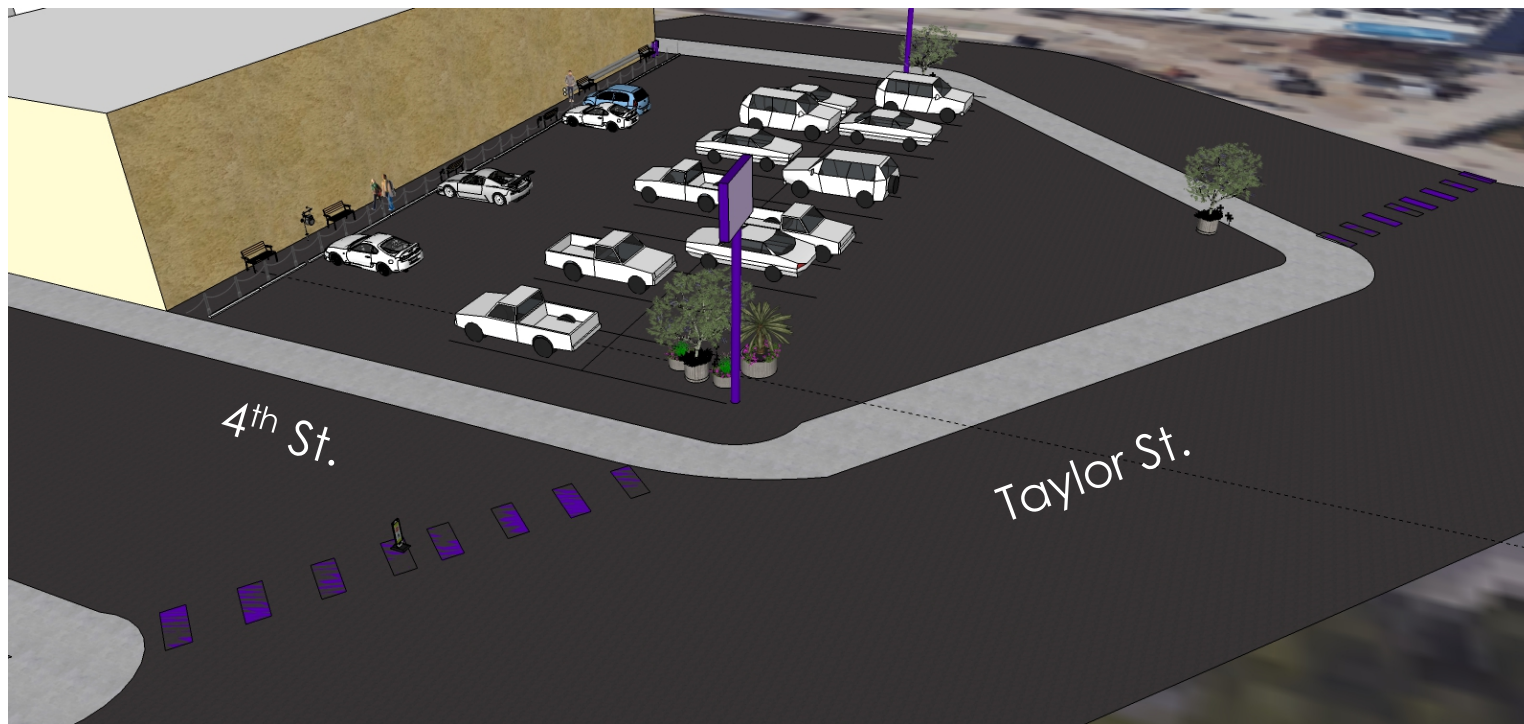
EVERYONE Owns Art!

a mural project using social practice art

COMMUNITY PROJECT PRESENTED BY THE TOBIN CENTER



Tobin Center – Triangle Parking Lot



The new pathway from the Tobin Parking Garage to the Tobin Center presents an opportunity to create a community experience in the arts.

What started as an idea for a mural representation of our Resident Companies has evolved into an engaging project that can last throughout the year.

Social Practice



Social practice is an art medium that focuses on engagement through human interaction and social discourse. Since it is people and their relationships that form the medium of such works – rather than a particular process of production – social engagement is not only a part of a work's organization, execution or continuation, but also an aesthetic in itself: of interaction and development. Socially engaged art aims to create social and/or political change through collaboration with individuals, communities, and institutions in the creation of participatory art.



Community Participation

We will gather inspiration and imagery from our 7 Resident Companies that represents the exuberance and joy of what they do, interpreted into a mural.





Community Consultants



We will invite our resident company partners to join us in creating ideas for the mural.

Together with leading community muralists and The Tobin Center's own graphic design artists, we will combine images into one large celebration of The Tobin Center Residents!

We have engaged Andy Benavides, Executive Director of S.M.A.R.T. as project consultant, as well as Shek Vega and Alex Rubio, well-known local artists as project advisors to share their expertise in designing murals and their installation.



The social part of the interaction



We will turn the final rendering into a large scale “paint by number” outline and apply it to the wall of the former First Baptist Church of San Antonio Laotian Ministry Building.

We have developed a year long schedule of community gatherings to paint the mural, raise awareness, and celebrate the vast amount of local talent in San Antonio.



The Potential Narrative

This project aims to peak curiosity and interest in the performing arts. We want to illustrate the need for community wide participation to fully support the arts in San Antonio. And over time by gathering together and putting forth an effort - our community can make great art happen.

Ultimately, we hope the public realizes a sense of ownership of The Tobin Center and our Resident Companies – San Antonio Symphony, Ballet San Antonio, Opera San Antonio, Youth Orchestras of San Antonio (YOSA), Children's Chorus of San Antonio, San Antonio Chamber Choir, and Classical Music Institute.



Let's make a mural!

