



614 Barbe

Powered by ArcGIS Server

Printed: Oct 09, 2018

The City of San Antonio does not guarantee the accuracy, adequacy, completeness or usefulness of any information. The City does not warrant the completeness, timeliness, or positional, thematic, and attribute accuracy of the GIS data. The GIS data, cartographic products, and associated applications are not legal representations of the depicted data. Information shown on these maps is derived from public records that are constantly undergoing revision. Under no circumstances should GIS-derived products be used for final design purposes. The City provides this information on an "as is" basis without warranty of any kind, express or implied, including but not limited to warranties of merchantability or fitness for a particular purpose, and assumes no responsibility for anyone's use of the information.

Allied Amusement Shop

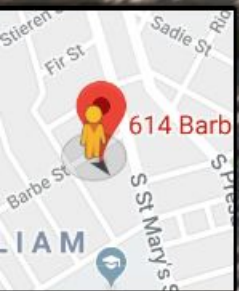
614 Barbe Street



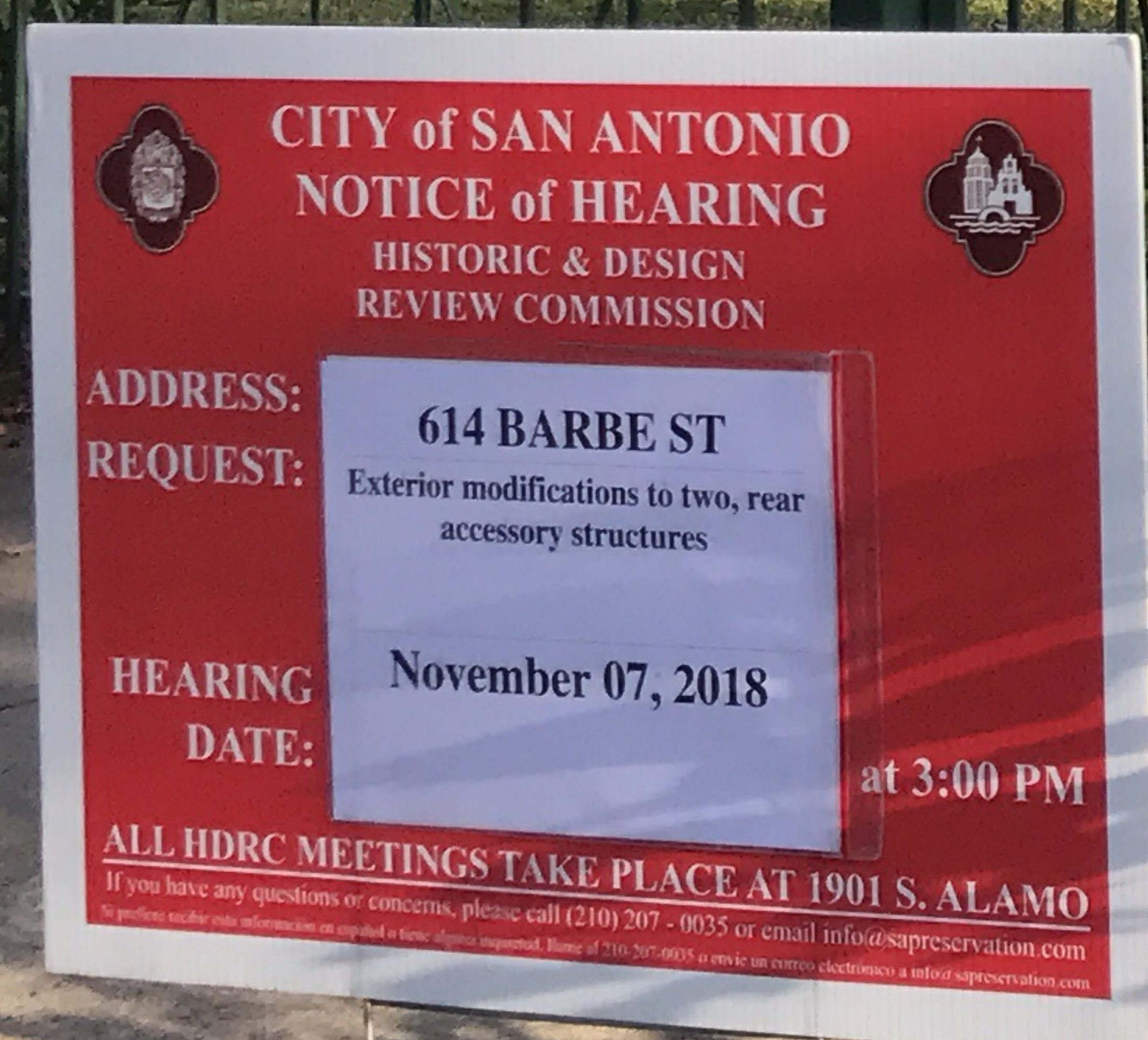
Google



614 Barbe Street



October 30, 2018 at 5:36 PM
400 Eagleland Dr
San Antonio TX 78210
United States
G.W. Brackenridge High School



363

TEX 440

S E E U O I U M E

Liberty St
N Carolina St

S. PRESA

PRESA

360

2992

2992

CEMBLER

W CAROLINA

COMMERCIAL AV

364

S. ST. MARYS
(GARDEN)

WESTMINSTER PRESBYTERIAN CHURCH
EDUCATIONAL BLDG

2912

360

BARBE

359

Scale of Feet

CEDAR

TEMPLE

(HENRIETTA)

MARNE AV. (DITTMAR)

MISSION

440

3573

3017

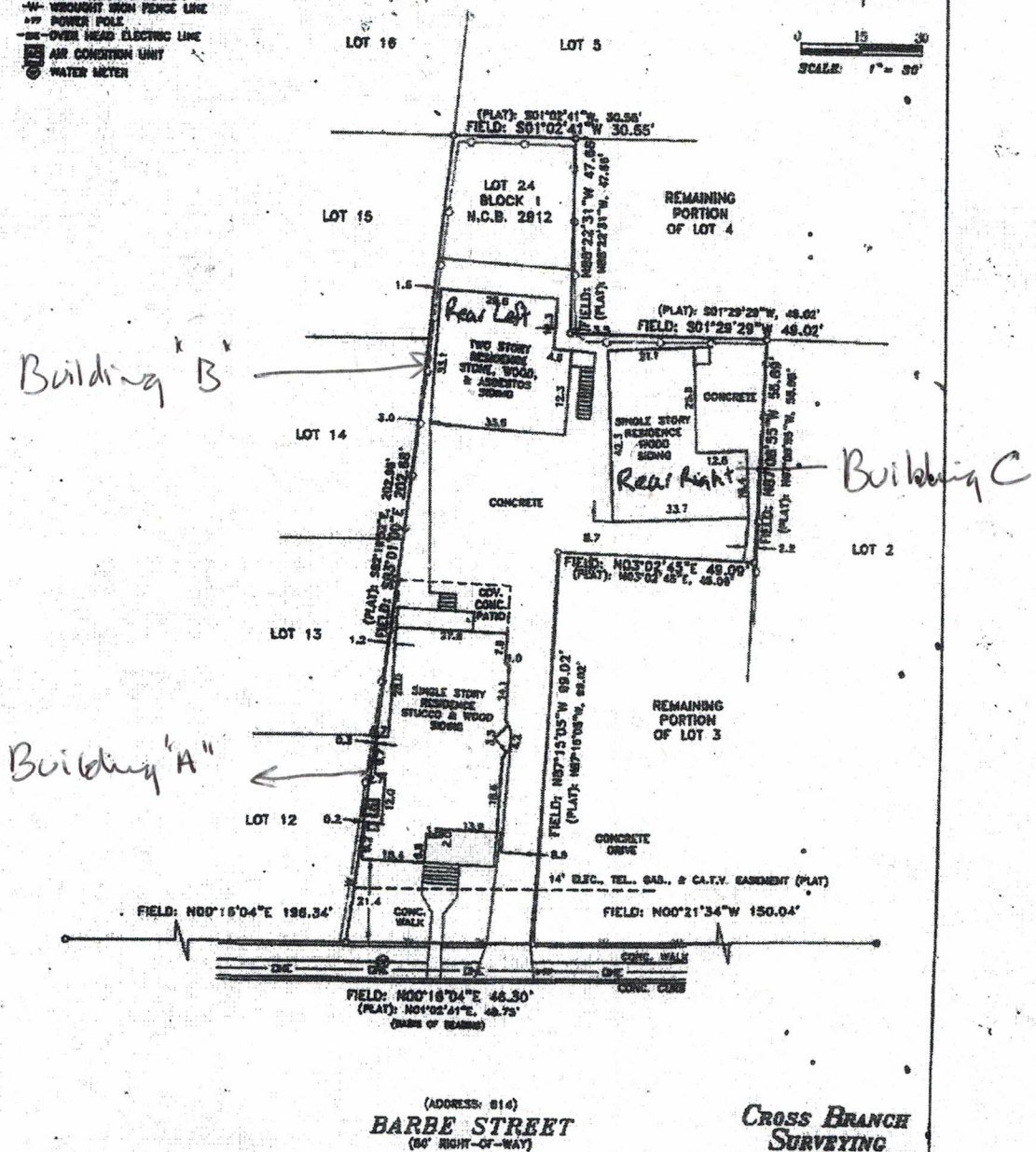
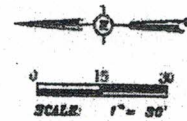
Not Paved

Not Paved

MARIA C. GUERRA SUBDIVISION

FLAT LEGEND

- 1/2" IRON ROD FOUND
- CALCULATED POINT
- CHAIN-LINK FENCE LINE
- W- WROUGHT IRON FENCE LINE
- POWER POLE
- OVER HEAD ELECTRIC LINE
- AIR CONDITION UNIT
- WATER METER



NOTE: THIS SURVEY WAS COMPLETED WITHOUT THE BENEFIT OF A TITLE COMMITTEE AND OTHER INSTRUMENTS OF RECORD WHICH MAY AFFECT THE TRUTH OF THIS SURVEY RECORD.

LOT 24, BLOCK 1, NEW CITY BLOCK 2812
 SUBDIVISION MARIA C. GUERRA SUBDIVISION
 VOLUME 8872 PAGE 124 DEED & PLAT RECORDS
 ADDRESS: 814 BARBE STREET
 CITY OF SAN ANTONIO, BEXAR COUNTY, TEXAS.

D.S. D.M. S.S. A.D./B.H.

(ADDRESS: 814)
BARBE STREET
 (50' RIGHT-OF-WAY)

CROSS BRANCH SURVEYING

2200 S.W. 10TH AVE. SUITE 100
 MIAMI, FLORIDA 33135
 (305) 555-1100

TELEPHONE NO. 1010000

CROSS BRANCH SURVEYING DOES NOT MAKE OR WARRANT ANY FLOOD ZONE DETERMINATION.

STATE OF TEXAS
 COUNTY OF BEXAR

I hereby certify that the above plat is true and correct according to an actual survey made by the ground under my supervision and that there are no other claims or encroachments of buildings or adjoining property, and that all buildings are shown located on this plat, and that all claims have been located as indicated above on the plat on the plat survey to not for construction, landscaping, construction, construction or development purposes. In addition to original measurements of land is not responsible to additional calculations or measurements, measurements and calculations not shown. However, the plat is for the purpose of this plat, the plat is not a final plat, and the plat is not a final plat.

This is the day of MAY, 2018 A.D.

David Newton Deibel

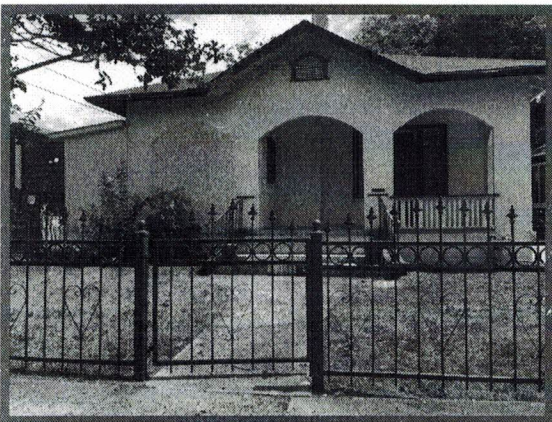
DAVID NEWTON DEIBEL
 REGISTERED PROFESSIONAL
 LAND SURVEYOR No. 658



WORK ORDER No. 10-10-18

"A"

Front House

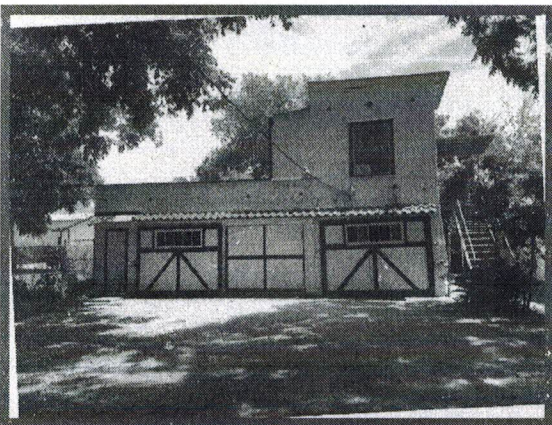


To recess the closed in arch
 $\frac{1}{2}$ " to 1" and smooth it out inside
 to bring back the historic value of
 the original 3 Arches

Disclaimer: The products and colors displayed in this printout are to be used for design purposes only. It is strongly recommended to view actual product samples and color swatches before making a final decision.

Building B Rear

Repair Window Frame



Replaced metal garage door with a more vintage door with side lites



63.5 in. x 81.625 in. Rochester Patina 1/2 Lite Unfinished Smooth Right-Hand Fiberglass
Prehung Front Door w/ Sidelites

★★★★★ (81) [Write a Review](#)

\$1013⁸⁸
/each

Color/Finish: **Smooth White: Ready to Paint**



Door Size (WxH) in.: **64 x 82**

64 x 82

68 x 82

Door Hanging: **Right-Hand/Inswing**

Left-Hand/Inswing

Right-Hand/Inswing

Quantity

-

1

+

Not in Your Store - We'll Ship It There

Available for pickup

November 9 - November 14

We'll send it to Cambray for free pickup

[Add to Cart](#)

[Check Nearby Stores](#)

or

We'll Deliver It to You

Standard Delivery

Expect it **November 12 - November 19**

[Add to Cart](#)

[Delivery Options](#)

[Live Chat](#)

We're unable to ship this item to:
AK, GU, HI, PR, VI

Or buy now with

Easy returns in store and online

Learn about our return policy



Product Overview

Requires a 64-1/4 in. x 82-1/8 in. rough opening for a secure fit

Merits Energy Star distinction for its power-saving efficiency

Keeps temperate air inside your home during all 4 seasons

Model #: 873191-3A4

Internet #: 203126132

Feather River Doors Rochester 1/2 Lite with Full Lite Sidelites is a Smooth Fiberglass Door with Patina Caming that is ready to paint. This door can be painted any color to match your home's decor. The Rochester Collection contemporary design features patina caming and clear bevel glass with shimmering cord glass surrounded by double granite, seedy, and pale gray glue chip glass. This door has all the long-lasting benefits associated with fiberglass doors, a great look, along with a load of features and benefits usually viewed as upgrades with other doors, plus energy efficient and Energy Star qualified. Door Spec: 36 in. x 80 in. Prehung Door with 12 in. Sidelites, 4-9/16 in. Primed Jamb, Right Hand Inswing, Fits Rough Opening of 64-1/4 in. x 82-1/8 in.

- Fiberglass construction resists denting, rusting and rotting for durability in the elements
- Polyurethane foam core provides energy-efficient insulation
- Composite adjustable threshold and compression weatherstrip help prevent air and water infiltration
- Sill-to-jamb kit and composite bottom door rail provide resistance to exterior jamb and door rot
- Matching glass caming, sill and hinge finish add a stylish accent
- Contemporary design with patina caming and clear bevel glass with shimmering cord glass surrounded by double granite, seedy and pale gray glue chip glass
- Smooth white surface with high-definition panel embossments can be painted to match your decor
- Energy Star qualified to meet or exceed federal guidelines for energy efficiency for year-round energy and money savings

- Ball bearing hinges offer smooth operation and help prevent door sagging and hinge wear
- Triple-pane glass with patina coming is insulated and tempered for energy efficiency and security
- From outside, open toward the inside of the home with the hinges on the right
- Requires a 64-1/4 in. x 82-1/8 in. rough opening for a secure fit
- [Click here to design your custom door today!](#)
- [Click here to check out our project guide on installing an entry door](#)
- [Click here to learn more about buying exterior doors](#)
- California residents see Prop 65 WARNINGS

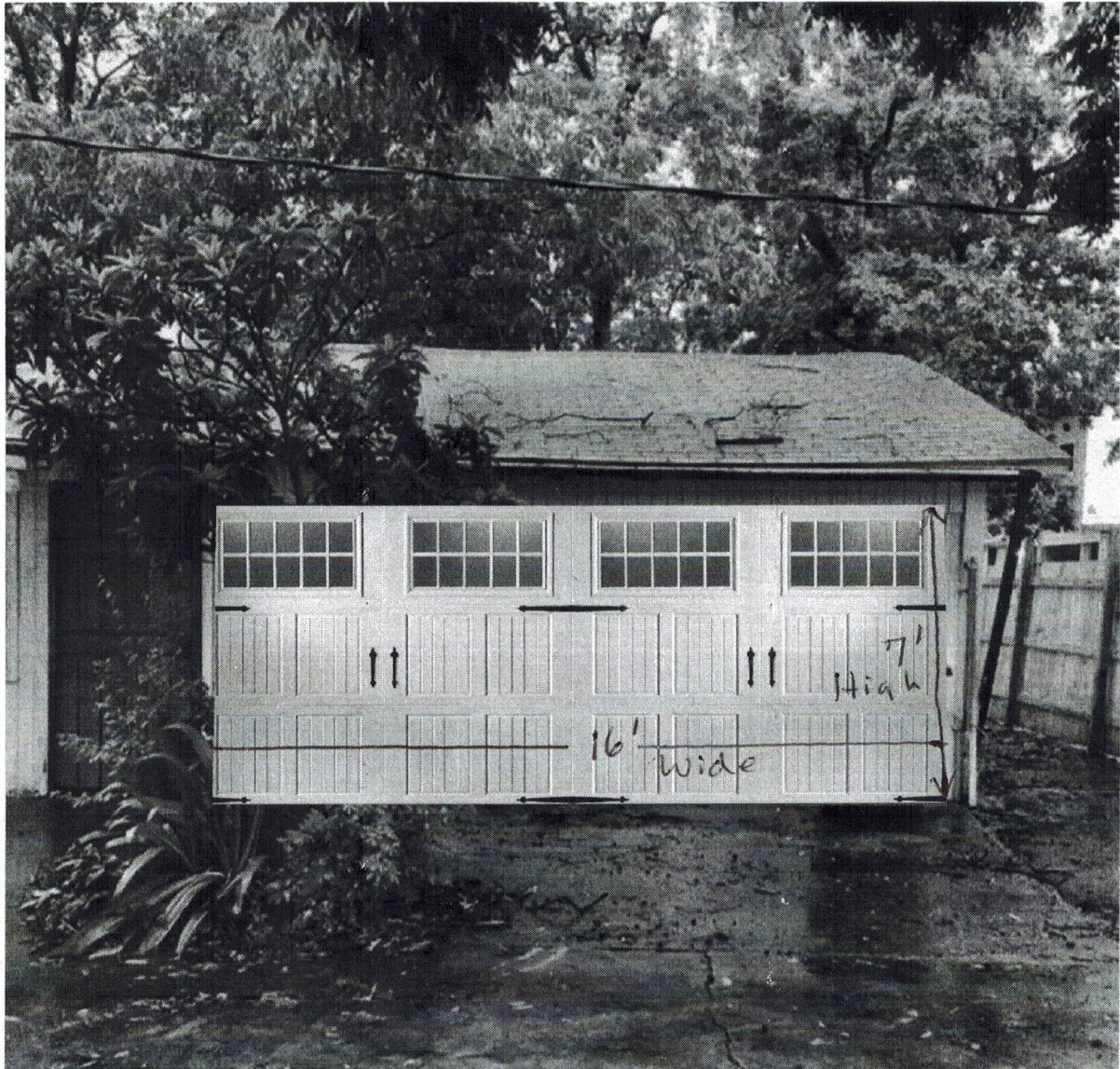
Info & Guides

- [Energy Guide](#)
- [Installation Guide](#)
- [Instructions / Assembly](#)
- [Product Brochure](#)
- [Use and Care Manual](#)
- [Warranty](#)



Live Chat

Rear Right Building "C"



Replace old garage door
with vintage carriage house
looking garage door

Disclaimer: The products and colors displayed in this printout are to be used for design purposes only. It is strongly recommended to view actual product samples and color swatches before making a final decision.



Show your car you care with Scott® Shop Towels.

6042-958



Shop Now →

Your Lists

Sam's Club Credit

Easy Reorder

Tips & Ideas

Join

Search

Your club
San Antonio, TX

Your account
Sign in

Cart

Shop by department

Business Center

Member Services

Halloween Headquarter

Shocking Values

Member's Mark

Gift Cards

Frequently Ordered

Donate now for Hurricane Relief. Click here for details.

Reorder from your frequently
purchased items

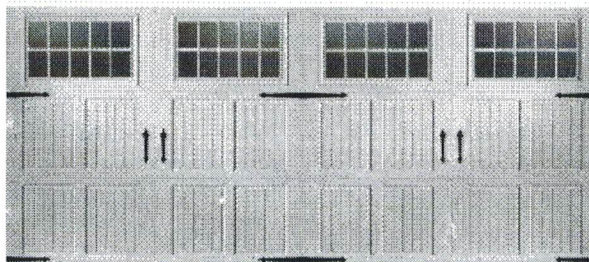
Got it

All Products > Auto & Tires > Home Garage Center > Garage Doors & Openers

Amarr Classica 2000 White Carriage House Garage Door (Multiple Options)

by Amarr | Item # 494563 | Model # CLASSICA2000 | ★★★★★ 5.0 (3) | [Write a review](#) | [Ask a question](#)

Rear Right Building "C"



About this item

- In-stock doors available in 14 days
- Special order doors available in 30 days
- From a distance, you see wood. Up close, it's sturdy, durable, low-maintenance steel
- Precision-shaped doors in fresh, clean, classic carriage house styles
- 3-section tall designs, instead of 4, helps deliver a more authentic carriage house look

Save \$213.00 ~~\$2099.00~~

\$1,886⁰⁰

Online only

Free shipping

Non-member price: \$2074.60 Join now.

Choose A Style: Tuscany 16' x 7'

Tuscany 16' x 7'

Choose A Window Type: Madeira

Madeira

Seine

None

Qty

Ship this item

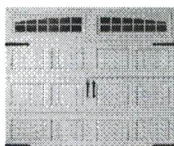
Free shipping

Get it by November 19

See shipping options▼

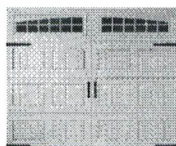
Add to list

people who viewed this item also viewed

Amarr Oak Summit
3000 White Panel...

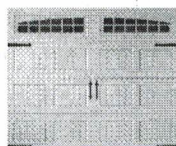
Free shipping

Save \$85.00

From **\$611⁰⁰**Amarr Oak Summit
2000 White Carra...

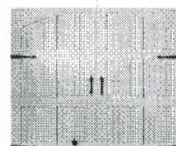
Free shipping

Save \$71.00

From **\$526⁰⁰**Amarr Oak Summit
1000 White Panel...

Free shipping

Save \$69.00

From **\$424⁰⁰**Amarr Classica 1000
White Carriage...

Free shipping

Save \$79.00

From **\$670⁰⁰**Amarr C
Sandtor

Free shi

Save \$

From \$

Description

Policies & plans

Member reviews & questions

Description

Classica 2000 - Double layer steel + insulation. Get that carriage house beauty with the Classica 2000 double-layer door. Provides durable, low maintenance features, plus a layer of vinyl-coated insulation for increased thermal properties and quieter operation.

- Heavy duty exterior steel
- Durable, reliable and low maintenance
- Environmentally safe polystyrene thermal
- Insulation with vinyl backing
- Energy efficient
- Quiet operation

For questions about delivery or installation, please contact the manufacturer's customer service department at **1-888-661-4575**.

Installation services may be available in your area. Installation is offered in over 32,500 zip codes across the United States.

Note: Florida and certain other high wind areas may require specialized product configurations. Doors with these configurations must be professionally installed. Please contact manufacturer for details about installation in these areas.

Policies & plans

Specifications

- Available in 2 colors
- Available in 5 sizes
- Available with 3 window options
- 2" (5.1cm) Thick
- Woodgrain exterior embossment

**Smells like a garden.
CLEANS LIKE THE DICKENS.**

Shop Now →

New
of Sam's Club

- Deeply sculpted panel designs
- Built with Safe Guard Pinch Protection
- Larger Sized Windows to provide natural light in your garage
- Unique 3-Section tall door to provide an authentic carriage house look
- Heavy-duty Exterior and Interior Steel
- Superior Energy Efficiency
- Extra Quiet Operation
- Top quality Hardware
- 1/8" (0.32cm) Tempered Double Strength Glass
- Bottom Weather Seal

Warranty

Paint Finish - Lifetime

Workmanship/Hardware - 5 Years

Manufacturer Info

For additional questions or concerns regarding this product, please contact the Manufacturer's Customer Service Department at 1 (888)-661-4575.

Assembled Country

USA

Assembled Size

Multiple sizes and colors available

Component Country

USA

Shipping Info

- Delivery is not available in AK, HI or Puerto Rico

Member reviews & questions

★★★★★ 5.0 | 3 Reviews

Search topics and reviews



3
Reviews

7
Questions

2
Answers

Reviews

[Write a review](#)

Rating Snapshot

Select a row below to filter reviews.

Average Customer Ratings

Overall ★★★★★ 5.0

5 ★	3
4 ★	0
3 ★	0
2 ★	0
1 ★	0

1-3 of 3 Reviews

Sort by: Most Helpful ▾



★★★★★ Johnadam · a year ago

shipped on time, great quality and fit and finish

I installed a 16x7 door and it is great. I replaced an old wooden garage door. The shipper called and was on time and very polite. Thanks Sams club and Amarr for a great product John Neff Orange CT

● Yes, I recommend this product.

Helpful? Yes · 5 No · 0 Report

October 9, 2018 at 1:36 PM
610 Barbe St
San Antonio TX 78210
United States



October 9, 2018 at 1:31 PM
1411 S Saint Marys St
San Antonio TX 78210
United States



October 9, 2018 at 1:31 PM

1411 S Saint Marys St

San Antonio TX 78210

United States



October 9, 2018 at 1:31 PM
1407 S Saint Marys St
San Antonio TX 78210
United States



October 9, 2018 at 1:32 PM
1407 S. Saint Marys St
San Antonio TX 78210
United States



October 9, 2018 at 1:32 PM
1407 S Saint Marys St
San Antonio TX 78210
United States



October 9, 2018 at 1:32 PM
1407 S Saint Marys St
San Antonio TX 78210
United States



October 9, 2018 at 1:33 PM
618 Cedar St
San Antonio TX 78210
United States



October 9, 2018 at 1:33 PM
614 Barbe St
San Antonio TX 78210
United States



October 9, 2018 at 1:34 PM
614 Barbe St
San Antonio TX 78210
United States

