



METES AND BOUNDS
DESCRIPTION FOR

A 2382.9 acre, more or less, tract of land comprised of all of the 1.713 acre tract recorded in Volume 12595, Page 931 and all of the 1.666 acre tract recorded in Volume 12563, Page 1102, and described as 1.978 acres in Volume 3327, Page 2069, Save and Except the 0.312 acre tract recorded in Volume 8080, Page 1698; all of the 144.685 acre tract recorded in Volume 15875, Page 29; all of the 183.507 acre tract recorded in Volume 15874, Page 2258; all of the remaining portion of the 380.761 acre tract recorded in Volume 12572, Page 1639; all of the remaining portion of the 328.967 acre tract recorded in Volume 7144, Page 1567; all of the remaining portion of the 194.989 acre tract and 0.443 acre tract recorded in Volume 7746, Page 803; all of the remaining portion of the 368.134 acre tract recorded in Volume 12642, Page 1974; all of the remaining portion of the 399.402 acre tract recorded in Volume 8337, Page 93; a 79.64 acre tract recorded in Volume 10732, Page 657; a 74.72 acre tract recorded in Volume 8159, Page 542; a 509.64 acre tract recorded in Volume 9438, Page 1273; a 325.07 acre tract recorded in Volume 8187, Page 814; a 157.48 acre tract recorded in Volume 9437, Page 963; a 51.568 acre tract recorded in Volume 8187, Page 828; a 297.00 acre tract recorded in Volume 7723, Page 1880; a portion of Talley Road; a 20.15 acre tract in deed recorded in Volume 5536, Page 1729; a 4.393 acre tract recorded in Volume 3361, Page 617; a 14.85 acre tract recorded in Volume 5536, Page 1726; a 2.758 acre tract recorded in Volume 6021, Page 435; a 9.694 acre tract recorded in Volume 3107, Page 186 and an 183.61 acre tract recorded in Volume 13514, Page 1496 all of the Official Public Records of Bexar County, Texas, in the T.R. Edmonson Survey No. 207, Abstract No. 228, County Block 4387, the J.H. Blannerhasset Survey No. 202, Abstract No. 56, County Block 4385, the Thomas York Survey No. 201 ½, Abstract No. 825, County Block 4400, the George Fellows Survey No. 205, Abstract No. 235, County Block 4388, the George Fellows Survey No. 206, Abstract No. 234, County Block 4389, the Sarah Tyler Survey No. 367, Abstract No. 744, County Block 4401, the Jose Jacinto Gonzalez Survey No. 255, Abstract 269, County Block 4404, the Emanuel Escalera Survey No. 369, Abstract 225, County Block 4405, the J. Hoffman Survey No., Abstract 962, County Block 5473, the BBB & CRR Co. Survey No. 386, Abstract 98, County Block 4410 and the Louis Gonzaba Survey No. 84, Abstract 253, County Block 4408 in Bexar County, Texas. Said 2382.9 acre tract being described as follows:

Page 1 of 18

COMMENCING: At a point on the west right-of-way line of Loop 1604, a variable width right-of-way, at the east corner of said 380.761 acre tract and the northeast corner of the 135.127 acre tract recorded in Volume 11798, Page 867 in said Official Public Records;

THENCE: S 43°48'45" W, along and with the southeast line of said 380.761 acre tract, the southeast line of said 144.685 acre tract and the northwest line of said 135.127 acre tract, a distance of 1435.62 feet to the POINT OF BEGINNING;

THENCE: (L1) S 43°48'45" W, continuing along and with the southeast line of said 380.761 acre tract, the southeast line of said 144.685 acre tract and the northwest line of said 135.127 acre tract, a distance of 1176.29 feet to a point, at the northwest corner of said 135.127 acre tract, an angle point of said 144.685 acre tract and the northeast corner of Royal Oaks of Westcreek Subdivision, Unit 1 recorded in Volume 9616, Pages 164-166 in said Deed and Plat Records;

THENCE: Departing the northwest line of said 135.127 acre tract, along and with the northeast line of said 144.685 acre tract, the south west line of said 380.761 acre tract, the following bearings and distances:

(L2) N 53°11'27" W, a distance of 375.68 feet to a point;

(L3) N 32°46'15" W, a distance of 290.89 feet to a point;

(L4) N 48°14'53" W, a distance of 966.45 feet to a point on the southeast line of Lot 1, Block 1, Potranco West High School recorded in Volume 9602, Page 32 of said Deed and Plat Records, a north corner of said 144.685 acre tract, a west corner of said 380.761 acre tract;

THENCE: (L5) N 65°22'46" E, along and with the southeast line of said Lot 1, the northwest line of said 380.761 acre tract, a distance of 513.08 feet to a point at the east corner of said Lot 1, a re-entrant corner of said 380.761 acre tract;

THENCE: (L6) N 24°37'13" W, along and with the northeast line of said Lot 1, the southwest line of said 380.761 acre tract, a distance of 1736.62 feet to a point on the southeast line of a 328.968 acre tract described in deed to Vise Oaks I, Ltd. recorded in Volume 7144, Page 1567 of said Official Public Records, the north corner of said Lot 1, the west corner of said 380.761 acre tract;

THENCE: (L7) S 65°22'42" W, along and with the southeast line of said 328.967 acre tract, over and across Cottonwood Way, a variable width right-of-way, a distance of 2380.55 feet to a point on the southwest right-of-way line of said Cottonwood Way;

THENCE: (L8) N 21°25'19" W, along and with the southwest right-of-way line of said Cottonwood Way, a distance of 80.14 feet to a point;

THENCE: (L9) S 65°23'24" W, departing the southwest right-of-way line of said Cottonwood Way, over and across said 328.967 acre tract, a distance of 1136.35 feet to a point at the east corner of Westcreek Oaks, a 70-foot right-of-way;

THENCE: Along and with the northeast right-of-way line of said Westcreek Oaks, the following bearings and distances:

(L10) N 24°45'26" W, a distance of 373.99 feet to a point;

(L11) N 30°10'15" W, a distance of 154.89 feet to a point;

(C1) Northwesterly, along a tangent curve to the right, said curve having a radius of 1615.00 feet, a central angle of 15°52'09", a chord bearing and distance of N 22°14'11" W, 445.88 feet, for an arc length of 447.31 feet to a point;

(C2) Northeasterly, along a non-tangent curve to the right, said curve having a radial bearing of N 74°53'01" E, a radius of 272.22 feet, a central angle of 16°40'39", a chord bearing and distance of N 06°46'40" W, 78.96 feet, for an arc length of 79.24 feet to a point;

(C3) Northwesterly, along a non-tangent curve to the left, said curve having a radial bearing of N 85°47'35" W, a radius of 195.30 feet, a central angle of 18°21'52", a chord bearing and distance of N 04°58'31" W, 62.33 feet, for an arc length of 62.60 feet to a point;

(L12) N 14°16'26" W, a distance of 8.60 feet to a point on the southeast right-of-way line of said Wiseman Road, the north corner of said Westcreek Oaks;

THENCE: (L13) S 75°41'54" W, along and with the southeast right-of-way line of said Wiseman Road, a distance of 110.00 feet to a point at the west corner of said Westcreek Oaks;

THENCE: Departing the southeast right-of-way line of said Wiseman Road, along and with the southwest line of said Westcreek Oaks, the following bearings and distances:

(L14) S 14°16'26" E, a distance of 9.30 feet to a point;

(C4) Southeasterly, along a tangent curve to the left, said curve having a radius of 190.00 feet, a central angle of 16°47'48", a chord bearing and distance of S 22°40'19" E, 55.50 feet, for an arc length of 55.70 feet to a point;

(C5) Southeasterly, long a reverse curve to the right, said curve having a radius of 270.00 feet, a central angle of 16°46'07", a chord bearing and distance of S 22°41'10" E, 78.74 feet, for an arc length of 79.02 feet to a point;

(C6) Southeasterly, along a non-tangent curve to the left, said curve having a radial bearing of N 75°54'27" E, a radius of 1685.57 feet, a central angle of 16°04'38", a chord bearing and distance of S 22°07'52" E, 471.42 feet, for an arc length of 472.97 feet to a point;

(L15) S 30°10'15" E, a distance of 154.89 feet to a point;

(C7) Southeasterly, along a tangent curve to the right, said curve having a radius of 1965.00 feet, a central angle of 15°52'09", a chord bearing and distance of S 22°14'11" E, 542.51 feet, for an arc length of 544.25 feet to a point;

(L16) S 14°18'06" E, a distance of 189.39 feet to a point at the east corner of said 368.134 acre tract, the re-entrant corner of a 183.507 acre tract described in deed to WPE Ventures, LLC recorded 15874, Page 2258 of said Official Public Records;

THENCE: Along and with the southeast line of said 368.134 acres, the east line of said 194.989 acres, the northwest line of said 183.507 acre tract, the following bearings and distances:

(L17) S 65°23'37" W, a distance of 270.29 feet to a point;

(L18) S 82°34'35" W, a distance of 897.63 feet to a point;

(L19) S 66°38'14" W, a distance of 708.02 feet to a point;

(L20) S 01°16'33" W, a distance of 168.70 feet to a point;

(L21) S 20°34'56" W, a distance of 335.24 feet to a point;

(L22) S 13°18'46" W, a distance of 246.46 feet to a point;

(L23) S 08°46'42" E, a distance of 541.45 feet to a point;

(L24) S 25°10'40" W, a distance of 344.97 feet to a point;

(L25) S 03°11'59" W, a distance of 285.08 feet to a point;

(L26) S 28°18'05" E, a distance of 293.73 feet to a point;

(L27) S 48°26'43" E, a distance of 501.96 feet to a point;

(L28) S 13°09'46" E, a distance of 379.81 feet to a point;

(L29) S 21°21'15" E, a distance of 151.06 feet to a point;

(L30) S 09°20'22" W, a distance of 115.54 feet to a point;

(L31) S 26°32'27" E, a distance of 210.14 feet to a point on the northwest line of a 145.096 acre tract described in deed to Gloria Jean Duhaime recorded in Volume 15789, Page 547 of said Official Public Records, the southeast line of said 0.443 acre tract;

THENCE: (L32) S 44°52'31" W, along and with a northwest line of said 145.096 acre tract, the southeast line of said 183.507 acre tract and the southeast line of said 0.443 acre tract, a distance of 649.56 feet to a point on the southeast line of said 194.989 acre tract, at an angle corner of said 145.096 acre tract, the south corner of said 0.443 acre tract;

THENCE: (L33) S 44°40'13" W, along and with the southeast line of said 194.989 acre tract and the northwest line of said 145.096 acre tract, distance of 255.93 feet to a point, at the south corner of said 194.989 acre tract and an angle corner of said 145.096 acre tract;

THENCE: Along and with the southwest line of said 194.989 acre tract and the northeast line of said 145.096 acre tract the following bearings and distances:

(L34) N 64°13'52" W, a distance of 808.38 feet to a point;

(L35) N 85°14'40" W, a distance of 778.41 feet to a point, at the west corner of said 194.989 acre tract and the southeast corner of Hilltop Acres Unit Two recorded in Volume 4400, Pages 66-67 in said Deed and Plat Records;

THENCE: (L36) N 00°04'43" W, along and with the east line of said Hilltop Acres Unit Two and the west line of said 194.989 acre tract, a distance of 646.28 feet to a point, at an angle point of said 194.989 acre tract and the south corner of said 368.134 acre tract;

THENCE: Along and with the west line of said 368.134 and continuing with the east line of said Hilltop Acres Unit Two, the following bearings and distances:

(L37) N 00°15'39" E, a distance of 566.00 feet to a point;

(L38) N 00°11'22" E, a distance of 1970.76 feet to a point, at the northeast corner of said Hilltop Acres Unit Two and the southeast corner of said 399.402 acre tract;

THENCE: Over and across said 399.402 acre tract, the following bearings and distances:

(L39) N 18°13'27" E, a distance of 412.55 feet to a point;

(L40) N 00°00'00" W, a distance of 1387.89 feet to a point on the south right-of-way line of said Wiseman Road;

THENCE: Along and with the south right-of-way line of said Wiseman Road, the following bearings and distances:

(C8) Northwesterly, along a non-tangent curve to the right, said curve having a radial bearing of N 08°04'09" E, a radius of 3632.62 feet, a central angle of 12°02'07", a chord bearing and distance of N 75°54'47" W, 761.65 feet, for an arc length of 763.06 feet to a point;

(L41) N 69°53'44" W, a distance of 231.27 feet to a point;

THENCE: Departing the south right-of-way line of said Wiseman Road, over and across said 399.402 acre tract, the following bearings and distances:

(L42) S 13°17'27" W, a distance of 91.14 feet to a point;

(L43) S 00°24'20" E, a distance of 55.38 feet to a point;

(L44) S 20°07'22" W, a distance of 207.63 feet to a point;

(L45) S 08°48'14" W, a distance of 47.60 feet to a point;

(L46) S 20°05'54" W, a distance of 92.91 feet to a point;
(L47) S 43°48'56" W, a distance of 149.34 feet to a point;
(L48) N 36°50'57" W, a distance of 390.00 feet to a point;
(L49) N 21°19'38" W, a distance of 89.63 feet to a point;
(L50) N 34°31'32" W, a distance of 206.45 feet to a point;
(L51) N 50°28'26" W, a distance of 83.43 feet to a point;
(L52) N 36°37'34" W, a distance of 97.97 feet to a point;
(L53) N 20°07'22" E, a distance of 145.44 feet to a point on the south right-of-way line of said Wiseman Road;

THENCE: Along and with the south right-of-way line of said Wiseman Road, the following bearings and distances:

(L54) N 69°53'44" W, a distance of 760.34 feet to a point;
(C9) Northwestly, along a tangent curve to the left, said curve having a radius of 4940.84 feet, a central angle of 10°32'56", a chord bearing and distance of N 75°10'11" W, 908.38 feet, for an arc length of 909.66 feet to a point;

THENCE: Departing the south right-of-way line of said Wiseman Road, over and across said 399.402 acre tract, the following bearings and distances:

(L55) S 62°58'32" W, a distance of 301.87 feet to a point;
(L56) S 27°56'42" W, a distance of 383.15 feet to a point;
(L57) S 44°04'58" W, a distance of 389.57 feet to a point;
(L58) S 07°12'17" W, a distance of 404.68 feet to a point;
(L59) S 28°52'39" W, a distance of 252.46 feet to a point;
(L60) S 04°16'56" W, a distance of 131.13 feet to a point;

(C10) Southwesterly, along a non-tangent curve to the right, said curve having a radial bearing of N 85°29'15" W, a radius of 508.81 feet, a central angle of 55°58'03", a chord bearing and distance of S 32°29'46" W, 477.49 feet, for an arc length of 497.02 feet to a point on the east right-of-way line of said Talley Road, the west line of said 399.402 acre tract;

THENCE: Along and with the northeast right-of-way line of said Talley Road and the southwest line of said 399.402 acre tract the following bearings and distances:

(L61) N 18°45'00" W, a distance of 1384.11 feet to a point;

(L62) N 27°56'41" W, a distance of 208.99 feet to a point;

(L63) N 40°23'20" W, a distance of 178.04 feet to a point;

(L64) N 46°39'39" W, a distance of 101.13 feet to a point;

(L65) N 54°25'40" W, a distance of 205.26 feet to a point;

(L66) N 54°31'55" W, a distance of 735.76 feet to a point;

THENCE: (L67) S 35°30'04" W, departing the northeast right-of-way line of said Talley Road and the southwest line of said 399.402 acre tract, over and across said Talley Road, a distance of 50.00 feet to a point, the southeast right-of-way line of said Talley Road;

THENCE: (L68) N 55°08'40" W, along and with the southeast right-of-way line of said Talley Road, a distance of 3869.22 feet to a point;

THENCE: (L69) N 33°54'04" E, departing the southeast right-of-way line of said Talley Road, over and across said Talley Road, a distance of 68.72 feet to a point, the northeast right-of-way of said Talley Road and the southeast corner of said 74.72 acre tract;

THENCE: (L70) N 56°05'56" W, along and with the northeast right-of-way line of said Talley Road, the southwest line of said 74.72 acre tract, a distance of 1061.81 feet to a point for the southwest corner of said 74.72 acre tract, the southeast corner of said 297.00 acre tract;

THENCE: Along and with the northeast right-of-way line of said Talley Road, the southwest line of said 297.00 acre tract the following bearings and distances:

(L71) N 56°03'10" W, a distance of 3353.39 feet to a point;

(L72) N 55°40'44" W, a distance of 123.01 feet to a point;

(L73) N 48°45'49" W, a distance of 74.90 feet to a point;

(L74) N 47°54'04" W, a distance of 1393.64 feet to a point;

(L75) N 37°36'54" W, a distance of 191.92 feet to a point;

(L76) N 22°31'48" W, a distance of 534.60 feet to a point;

(L77) N 21°51'40" W, a distance of 434.84 feet to a point;

(L78) N 14°04'38" W, a distance of 111.10 feet to a point;

(L79) N 02°24'59" W, a distance of 219.94 feet to a point for the west most corner of the 297.00 acre tract, the southwest corner of a 10.000 acre tract recorded in Volume 8979, Page 1056 of said Official Public Records;

THENCE: (L80) N 89°55'43" E, departing the northeast right-of-way of said Talley Road, along and with south line of said 10.000 acre tract, a north line of said 297.00 acre tract, a distance of 288.20 feet to a point for the southeast corner of said 10.000 acre tract;

THENCE: (L81) N 44°44'21" E, along and with the southeast line of said 10.000 acre tract, the west line of said 297.00 acre tract, at a distance of 978.16 feet passing the northeast corner of said 10.000 acre tract, the southeast corner of a 101.216 acre tract recorded in Volume 6362, Page 1523 of said Official Public Records, continuing for a total distance of 1818.26 feet to a point for a northwest corner of said 297.00 acre tract, a reentrant corner of said 101.216 acre tract;

THENCE: (L82) S 79°00'40" E, along and with a south line of said 101.216 acre tract, a north line of said 297.00 acre tract, a distance of 370.48 feet to a point;

THENCE: (L83) S 79°03'48" E, continuing along and with the south line of said 101.216 acre tract, the north line of said 297.00 acre tract, a distance of 627.41 feet to a point;

THENCE: (L84) S 80°04'01" E, continuing along and with the south line of said 101.216 acre tract, the north line of said 297.00 acre tract, a distance of 17.57 feet to a point for the southwest corner of said 51.568 acre tract, the southeast corner of said 101.216 acre tract;

- THENCE: (L85) N 00°18'55" W, along and with the east line of said 101.216 acre tract, the west line of said 51.568 acre tract, a distance of 1359.54 feet to a point for the northeast corner of said 101.216 acre tract, the northwest corner of said 51.568 acre tract, on the south line of a 183.61 acre tract recorded in Volume 13514, Page 1496 of said Official Public Records;
- THENCE: (L86) S 89°39'39" W, along and with the south line of said 183.61 acre tract, the north line of said 51.568 acre tract, a distance of 398.71 feet to a point for a southwest corner of said 183.61 acre tract;
- THENCE: (L87) N 00°23'16" W, along and with a west line of said 183.61 acre tract, a distance of 4234.94 feet to a point for a reentrant corner of said 183.61 acre tract, the northeast corner of a 34.616 acre tract recorded in Volume 10320, Page 1769 of said Official Public Records, and the southeast corner said 9.694 acre tract;
- THENCE: (L88) S 89°57'39" W, along and with the north line of said 34.616 acre tract, the south line of said 9.694 acre tract, a distance of 942.63 feet to a point for the southwest corner of said 2.758 acre tract, the northwest corner of said 34.616 acre tract, and on the east right-of-way line of said Talley Road;
- THENCE: (L89) N 00°19'26" W, a distance of 169.55 feet to a point to a point of the south right-of-way line of Talley Road;
- THENCE: (C11) Northeasterly, along and with the southeast right-of-way line of said Talley Road, the northwest line of said 157.48 acre tract, along a non-tangent curve to the left, said curve having a radius of 746.20 feet, a central angle of 20°02'18", a chord bearing and distance of N 33°51'23" E, 259.64 feet, for an arc length of 260.97 feet to a point;
- THENCE: (L90) N 23°50'08" E, continuing along and with the southeast right-of-way line of said Talley Road, the northwest line of said 157.48 acre tract, a distance of 876.70 feet to a point for the northernmost corner of said 157.48 acre tract, on the south line of a 117.985 acre tract recorded in Volume 12148, Page 888 of said Official Public Records;
- THENCE: (L91) S 60°10'17" E, departing the southeast right-of-way line of said Talley Road, along and with the northeast line of said 157.48 acre tract, the southwest line of said 117.985 acre tract, a distance of 2148.10 feet to a point for the northeast corner of said 157.48 acre tract, a reentrant corner of said 117.985 acre tract;
- THENCE: (L92) S 24°00'59" W, along and with a northwest line of said 117.985 acre tract, a southeast line of said 157.48 acre tract, a distance of 1586.29 feet to a point;

- THENCE: (L93) S 00°16'25" E, continuing along and with a west line of said 117.985 acre tract, an east line of said 157.48 acre tract, a distance of 1414.15 feet to a point for the southwest corner of said 117.985 acre tract, a reentrant corner of said 157.48 acre tract;
- THENCE: (L94) S 82°50'21" E, along and with the south line of said 117.985 acre tract, a north line of said 157.48 acre tract, a distance of 744.30 feet to a point for the southeast corner of said 117.985 acre tract, the northeast corner of said 157.48 acre tract, on the west line of said 325.07 acre tract;
- THENCE: (L95) N 01°06'20" W, along and with the east line of said 117.985 acre tract, the west line of said 325.07 acre tract, a distance of 1208.49 feet to a point;
- THENCE: (L96) N 01°04'31" W, continuing along and with the east line of said 117.985 acre tract, the west line of said 325.07 acre tract, a distance of 65.12 feet to a point for the northwest corner of said 325.07 acre tract, the southwest corner of said 509.64 acre tract;
- THENCE: (L97) N 23°41'38" E, along and with the northwest line of said 509.07 acre tract, the southeast line of said 117.985 acre tract, a distance of 1199.72 feet to a point for the northwest corner of said 509.64 acre tract, the southwest corner of a 60-foot private road recorded in Volume 3695, Page 111 of said Official Public Records;
- THENCE: (L98) S 66°04'16" E, along and with the northeast line of said 509.64 acre tract, the southwest line of said 119.833 acre tract, a distance of 4987.47 feet to a point for the northeast corner of said 509.64 acre tract, a reentrant corner of a 125.955 acre tract recorded in Volume 11628, Page 218 of said Official Public Records;
- THENCE: (L99) S 24°28'44" W, along and with a southeast line of said 509.64 acre tract, the northwest line of line of said 125.955 acre tract, a distance of 2283.24 feet to a point for the southwest corner of said 125.955 acre tract, a reentrant corner of said 509.64 acre tract;
- THENCE: (L100) S 66°09'55" E, along and with the south line of said 125.955 acre tract, a north line of said 509.64 acre tract, a distance of 2739.12 feet to a point for a northeast corner of said 509.64 acre tract, on the west line of a 196.160 acre tract recorded in Volume 12281, Page 757 of said Official Public Records;
- THENCE: (L101) S 14°11'09" E, along and with the east line of said 509.64 acre tract, the west line of said 196.160 acre tract, a distance of 920.51 feet to a point for a southeast corner of said 509.64 acre tract, the southwest corner of said 196.160 acre tract;

- THENCE: (L102) N 89°52'10" W, along and with the south line of said 509.64 acre tract, a distance of 2183.95 feet to a point;
- THENCE: (L103) N 88°20'05" W, continuing along and with the south line of said 509.64 acre tract, a distance of 1773.53 feet to a point for the northwest corner of Galm Road, a variable width right-of-way recorded in Volume 9572, Page 15 of said Deed and Plat Records, a reentrant corner of said 509.64 acre tract;
- THENCE: (L104) S 15°57'59" W, along and with the southeast line of said 509.64 acre tract, the northwest right-of-way line of said Galm Road, a distance of 3219.36 feet to a point for the southeast corner of said 509.64 acre tract, the northeast corner of said 74.72 acre tract;
- THENCE: (L105) S 15°48'52" W, along and with the southeast line of said 74.72 acre tract, a distance of 1777.37 feet to a point for the southeast most corner of said 74.72 acre tract, the northeast corner of Lot 1, Block 26, CB 4389 of Talley Road Church Subdivision recorded in Volume 9621, Page 205 of said Deed and Plat Records;
- THENCE: (L106) N 74°02'07" W, departing the northwest right-of-way line of said Galm Road, along and with a south line of said 74.72 acre tract, a distance of 449.99 feet to a point for the northwest corner of said Lot 1;
- THENCE: (L107) S 15°57'50" W, continuing along and with the southeast line of said 74.72 acre tract, the northwest line of said Lot 1, a distance of 411.03 feet to a point on the northeast right-of-way line of said Talley Road, the southwest corner of said Lot 1;
- THENCE: (L108) S 57°50'02" W, along and with the northeast right-of-way line of said Talley Road, a distance of 428.03 feet to a point;
- THENCE: (L109) S 54°29'56" E, along and with the northeast right-of-way line of said Talley Road, a distance of 3438.59 feet to a point, at an angle point of said 399.402 acre tract and an angle point of the 1611.112 acre tract recorded in Volume 10940, Page 369 in said Official Public Records;
- THENCE: (L110) N 05°29'27" E, along and with a west line of said 399.402 acre tract and an east line of said 1611.112 acre tract, a distance of 1307.77 feet to a point on the northwest line of said 399.402 acre tract;
- THENCE: Along and with the north line of said 399.402 acre tract and the south line of said 1611.112 acre tract, the following bearings and distances:

(L111) S 80°51'38" E, a distance of 520.24 feet to a point;

(L112) S 81°00'41" E, a distance of 390.48 feet to a point;

(L113) S 80°50'12" E, a distance of 671.21 feet to a point;

(L114) S 80°58'12" E, a distance of 2073.47 feet to a point, at the northeast corner of said 399.402 acre tract and the northwest corner of said 368.134 acre tract;

THENCE: Along and with the north line of said 368.134 acre tract and continuing along and with the south line of said 1611.112 acre tract, the following bearings and distances:

(L115) S 89°40'45" E, a distance of 768.77 feet to a point;

(L116) S 89°58'46" E, a distance of 156.62 feet to a point;

(L117) N 89°27'14" E, a distance of 275.48 feet to a point;

(L118) N 89°06'14" E, a distance of 333.80 feet to a point;

(L119) N 88°00'40" E, a distance of 134.58 feet to a point;

(L120) N 85°35'08" E, a distance of 1510.78 feet to a point;

(L121) N 88°52'57" E, a distance of 137.30 feet to a point;

(L122) S 87°31'46" E, a distance of 158.89 feet to a point;

(L123) S 85°00'37" E, a distance of 704.71 feet to a point, at the northeast corner of said 368.134 acre tract and an angle point of said 1611.112 acre tract;

THENCE: (L124) S 00°21'06" W, along and with an east line of said 368.134 acre tract and a west line of said 1611.112 acre tract, a distance of 903.61 feet to a point, at the northwest corner of said 328.967 acre tract and an angle point of said 1611.112 acre tract;

THENCE: (L125) N 74°28'54" E, along and with the north line of said 328.967 acre tract, the south line of said 1611.112 acre tract and the south line of Alamo Ranch Unit 29B, Enclave recorded in Volume 9575, Pages 119-120 in said Deed and Plat Records, a distance of 1818.93 feet to a point;

THENCE: (L126) N 74°27'12" E, along and with the north line of said 328.967 acre tract, the south line of said Alamo Ranch Unit 29B, Enclave, the south line of Alamo Ranch – Cottonwood Way, Unit 1, recorded in Volume 9572, Page 196 in said Deed and Plat Records, the south line of Alamo Ranch Unit 30, Enclave recorded in Volume 9572, Pages 201-203 in said Deed and Plat Records, and the south line of Alamo Ranch Unit 32, Enclave recorded in Volume 9582, Pages 210-211 in said Deed and Plat Records, a distance of 1803.85 feet to a point, at the southeast corner of said Alamo Ranch Unit 32, Enclave and the southwest corner of North San Antonio Hills Unit No. 1 recorded in Volume 7000, Pages 6-8 in said Deed and Plat Records;

THENCE: Along and with the south line of said North San Antonio Hills Unit No. 1 and continuing along and with the north line of said 328.967 acre tract, the following bearings and distances:

(L127) N 74°23'23" E, a distance of 159.65 feet to a point;

(L128) N 74°38'32" E, a distance of 664.89 feet to a point;

(L129) N 73°55'26" E, a distance of 311.97 feet to a point;

(L130) N 74°31'19" E, a distance of 312.00 feet to a point;

(L131) N 74°37'19" E, a distance of 514.00 feet to a point;

(L132) N 74°31'19" E, a distance of 140.60 feet to a point;

(L133) N 74°31'12" E, a distance of 547.70 feet to a point;

(L134) N 74°36'12" E, a distance of 698.35 feet to a point;

THENCE: Departing the south line of said North San Antonio Hills Unit No. 1 and the north line of said 328.967 acre tract, over and across said 328.967 acre tract, the following bearings and distances:

(L135) S 02°38'02" W, a distance of 264.44 feet to a point;

(L136) S 06°19'31" W, a distance of 62.14 feet to a point;

(L137) S 01°27'07" W, a distance of 1156.95 feet to a point;

(L138) S 00°06'02" W, a distance of 632.47 feet to a point;

(L138) S 00°06'02" W, a distance of 632.47 feet to a point;

THENCE: (L139) S 04°23'07" W, over and across said 328.967 acre tract and said 380.761 acre tract, a distance of 305.79 feet to a point;

THENCE: (L140) S 00°22'05" E, over and across said 380.761 acre tract, a distance of 573.29 feet to a point;

THENCE: (L141) S 15°22'59" E, over and across said 380.761 acre tract, a distance of 347.14 feet to a point;

THENCE: (L142) S 00°20'21" E, over and across said 380.761 acre tract, a distance of 993.78 feet to a POINT OF BEGINNING and containing 2,382.9 acres in Bexar County, Texas.

"This document was prepared under 22TAC663.21, does not reflect the results of an on the ground survey, and is not to be used to convey or establish interests in real property except those rights and interests implied or established by the creation or reconfiguration of the boundary of the political subdivision for which it was prepared."

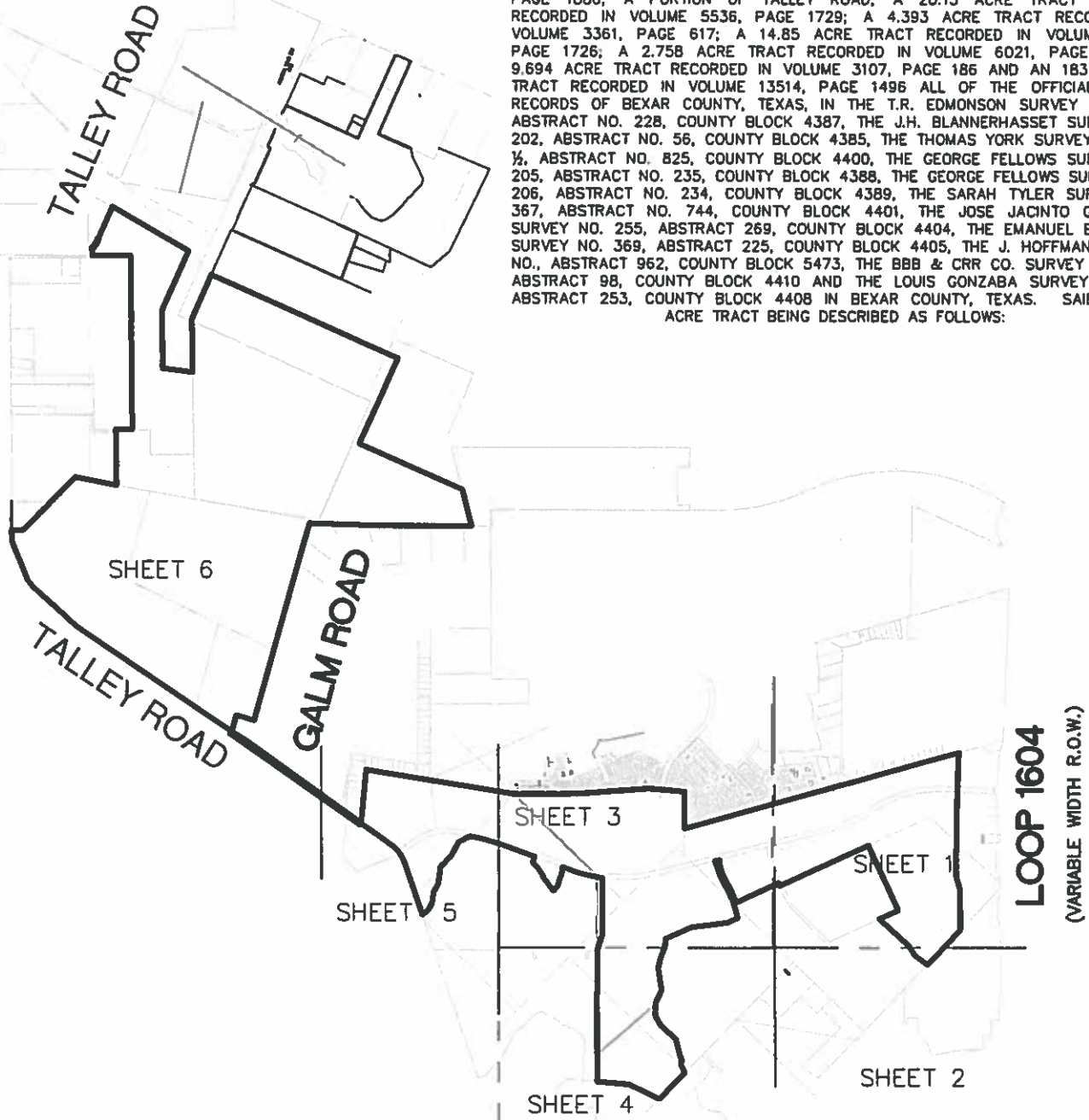
PREPARED BY: Pape-Dawson Engineers, Inc.
DATE: December 11, 2017
REVISED: November 6, 2018
Job No.: 6979-09
DOC. ID. N:\CIVIL\6979-09\Word\6979-09 FN 2382.9AC.docx



Paul T. Ross
06 Nov. 18

EXHIBIT OF

A 2,382.9 ACRE, MORE OR LESS, TRACT OF LAND COMPRISED OF ALL OF THE 1.713 ACRE TRACT RECORDED IN VOLUME 12595, PAGE 931 AND ALL OF THE 1.666 ACRE TRACT RECORDED IN VOLUME 12563, PAGE 1102, AND DESCRIBED AS 1.978 ACRES IN VOLUME 3327, PAGE 2069, SAVE AND EXCEPT THE 0.312 ACRE TRACT RECORDED IN VOLUME 8080, PAGE 1698; ALL OF THE 144.685 ACRE TRACT RECORDED IN VOLUME 15875, PAGE 29; ALL OF THE 183.507 ACRE TRACT RECORDED IN VOLUME 15874, PAGE 2258; ALL OF THE REMAINING PORTION OF THE 380.761 ACRE TRACT RECORDED IN VOLUME 12572, PAGE 1639; ALL OF THE REMAINING PORTION OF THE 328.967 ACRE TRACT RECORDED IN VOLUME 7144, PAGE 1567; ALL OF THE REMAINING PORTION OF THE 194.989 ACRE TRACT AND 0.443 ACRE TRACT RECORDED IN VOLUME 7746, PAGE 803; ALL OF THE REMAINING PORTION OF THE 368.134 ACRE TRACT RECORDED IN VOLUME 12642, PAGE 1974; ALL OF THE REMAINING PORTION OF THE 399.402 ACRE TRACT RECORDED IN VOLUME 8337, PAGE 93; A 79.64 ACRE TRACT RECORDED IN VOLUME 10732, PAGE 657; A 74.72 ACRE TRACT RECORDED IN VOLUME 8159, PAGE 542; A 509.64 ACRE TRACT RECORDED IN VOLUME 9438, PAGE 1273; A 325.07 ACRE TRACT RECORDED IN VOLUME 8187, PAGE 814; A 157.48 ACRE TRACT RECORDED IN VOLUME 9437, PAGE 963; A 51.568 ACRE TRACT RECORDED IN VOLUME 8187, PAGE 828; A 297.00 ACRE TRACT RECORDED IN VOLUME 7723, PAGE 1880; A PORTION OF TALLEY ROAD; A 20.15 ACRE TRACT IN DEED RECORDED IN VOLUME 5536, PAGE 1729; A 4.393 ACRE TRACT RECORDED IN VOLUME 3361, PAGE 617; A 14.85 ACRE TRACT RECORDED IN VOLUME 5536, PAGE 1726; A 2.758 ACRE TRACT RECORDED IN VOLUME 6021, PAGE 435; A 9.694 ACRE TRACT RECORDED IN VOLUME 3107, PAGE 186 AND AN 183.61 ACRE TRACT RECORDED IN VOLUME 13514, PAGE 1496 ALL OF THE OFFICIAL PUBLIC RECORDS OF BEXAR COUNTY, TEXAS, IN THE T.R. EDMONSON SURVEY NO. 207, ABSTRACT NO. 228, COUNTY BLOCK 4387, THE J.H. BLANNERHASSET SURVEY NO. 202, ABSTRACT NO. 56, COUNTY BLOCK 4385, THE THOMAS YORK SURVEY NO. 201 1/2, ABSTRACT NO. 825, COUNTY BLOCK 4400, THE GEORGE FELLOWS SURVEY NO. 205, ABSTRACT NO. 235, COUNTY BLOCK 4388, THE GEORGE FELLOWS SURVEY NO. 206, ABSTRACT NO. 234, COUNTY BLOCK 4389, THE SARAH TYLER SURVEY NO. 367, ABSTRACT NO. 744, COUNTY BLOCK 4401, THE JOSE JACINTO GONZALEZ SURVEY NO. 255, ABSTRACT 269, COUNTY BLOCK 4404, THE EMANUEL ESCALERA SURVEY NO. 369, ABSTRACT 225, COUNTY BLOCK 4405, THE J. HOFFMAN SURVEY NO., ABSTRACT 962, COUNTY BLOCK 5473, THE BBB & CRR CO. SURVEY NO. 386, ABSTRACT 98, COUNTY BLOCK 4410 AND THE LOUIS GONZABA SURVEY NO. 84, ABSTRACT 253, COUNTY BLOCK 4408 IN BEXAR COUNTY, TEXAS. SAID 2637.8 ACRE TRACT BEING DESCRIBED AS FOLLOWS:



**PAPE-DAWSON
ENGINEERS**

SAN ANTONIO | AUSTIN | HOUSTON | FORT WORTH | DALLAS
2800 NW LOOP 410 | SAN ANTONIO, TX 78213 | 210.379.9900
TOLPE PUBLIC REGISTRATION 0470 | TOLPE PUBLIC REGISTRATION 01082000

INDEX MAP

REVISED NOVEMBER 6, 2018

LINE TABLE
SEE SHEET 8
& 9

INDEX SHEET

JOB No.: 6979-09

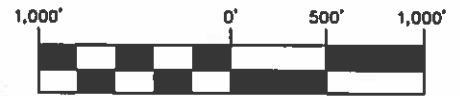
LEGEND:

DR DEED RECORDS OF BEXAR COUNTY,
TEXAS
OPR OFFICIAL PUBLIC RECORDS OF BEXAR
COUNTY, TEXAS
DPR DEED AND PLAT RECORDS OF BEXAR
COUNTY, TEXAS

NOTES:

1. THE PROFESSIONAL SERVICES PROVIDED
HEREWITH INCLUDE THE PREPARATION OF A
FIELD NOTE DESCRIPTION.
2. "THIS DOCUMENT WAS PREPARED UNDER
22TAC663.21, DOES NOT REFLECT THE
RESULTS OF AN ON THE GROUND SURVEY,
AND IS NOT TO BE USED TO CONVEY OR
ESTABLISH INTERESTS IN REAL PROPERTY
EXCEPT THOSE RIGHTS AND INTERESTS
IMPLIED OR ESTABLISHED BY THE CREATION
OR RECONFIGURATION OF THE BOUNDARY
OF THE POLITICAL SUBDIVISION FOR WHICH
IT WAS PREPARED."

WESTPOINTE EAST PUBLIC IMPROVEMENT DISTRICT



SCALE: 1" = 1,000'

KEYNOTES

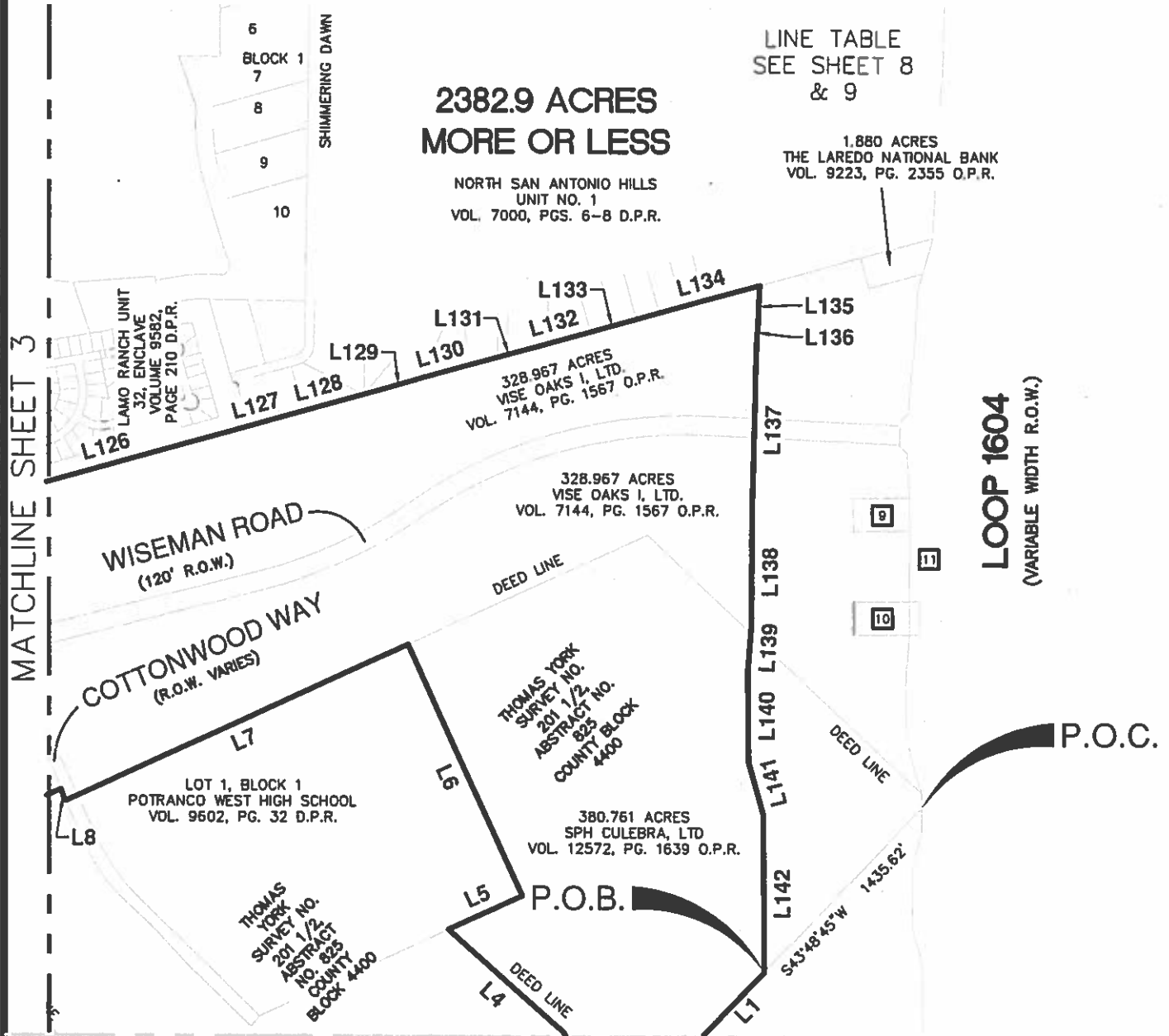
- 9** 1.713 ACRES
VISE OAKS I, LTD.
VOL. 12595, PG. 931 O.P.R.
- 10** 1.666 ACRES
VISE OAKS I, LTD.
VOL. 12563, PG. 1102 O.P.R.
(1.978 ACRES
VOL. 3327, PG. 2069 O.P.R.)
- 11** 0.312 ACRE
VOL. 8080, PG. 1698 O.P.R.

2382.9 ACRES MORE OR LESS

NORTH SAN ANTONIO HILLS
UNIT NO. 1
VOL. 7000, PGS. 6-8 D.P.R.

LINE TABLE
SEE SHEET 8
& 9

1.880 ACRES
THE LAREDO NATIONAL BANK
VOL. 9223, PG. 2355 O.P.R.



**PAPE-DAWSON
ENGINEERS**

SAN ANTONIO | AUSTIN | HOUSTON | FORT WORTH | DALLAS
2900 NW LOOP 410 | SAN ANTONIO, TX 78213 | 210.379.9006
TYPE PPM REGISTRATION 6478 | TYPE PPM REGISTRATION 01082888

MATCHLINE SHEET 2

REVISED NOVEMBER 6, 2018

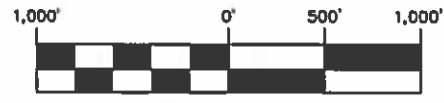
SHEET 1 OF 9
JOB No.: 6979-09

LEGEND:

DR DEED RECORDS OF BEXAR COUNTY,
TEXAS
OPR OFFICIAL PUBLIC RECORDS OF BEXAR
COUNTY, TEXAS
DPR DEED AND PLAT RECORDS OF BEXAR
COUNTY, TEXAS

NOTES:

1. THE PROFESSIONAL SERVICES PROVIDED
HEREWITH INCLUDE THE PREPARATION OF A
FIELD NOTE DESCRIPTION.
2. "THIS DOCUMENT WAS PREPARED UNDER
22TAC663.21, DOES NOT REFLECT THE
RESULTS OF AN ON THE GROUND SURVEY,
AND IS NOT TO BE USED TO CONVEY OR
ESTABLISH INTERESTS IN REAL PROPERTY
EXCEPT THOSE RIGHTS AND INTERESTS
IMPLIED OR ESTABLISHED BY THE CREATION
OR RECONFIGURATION OF THE BOUNDARY
OF THE POLITICAL SUBDIVISION FOR WHICH
IT WAS PREPARED."



SCALE: 1" = 1,000'

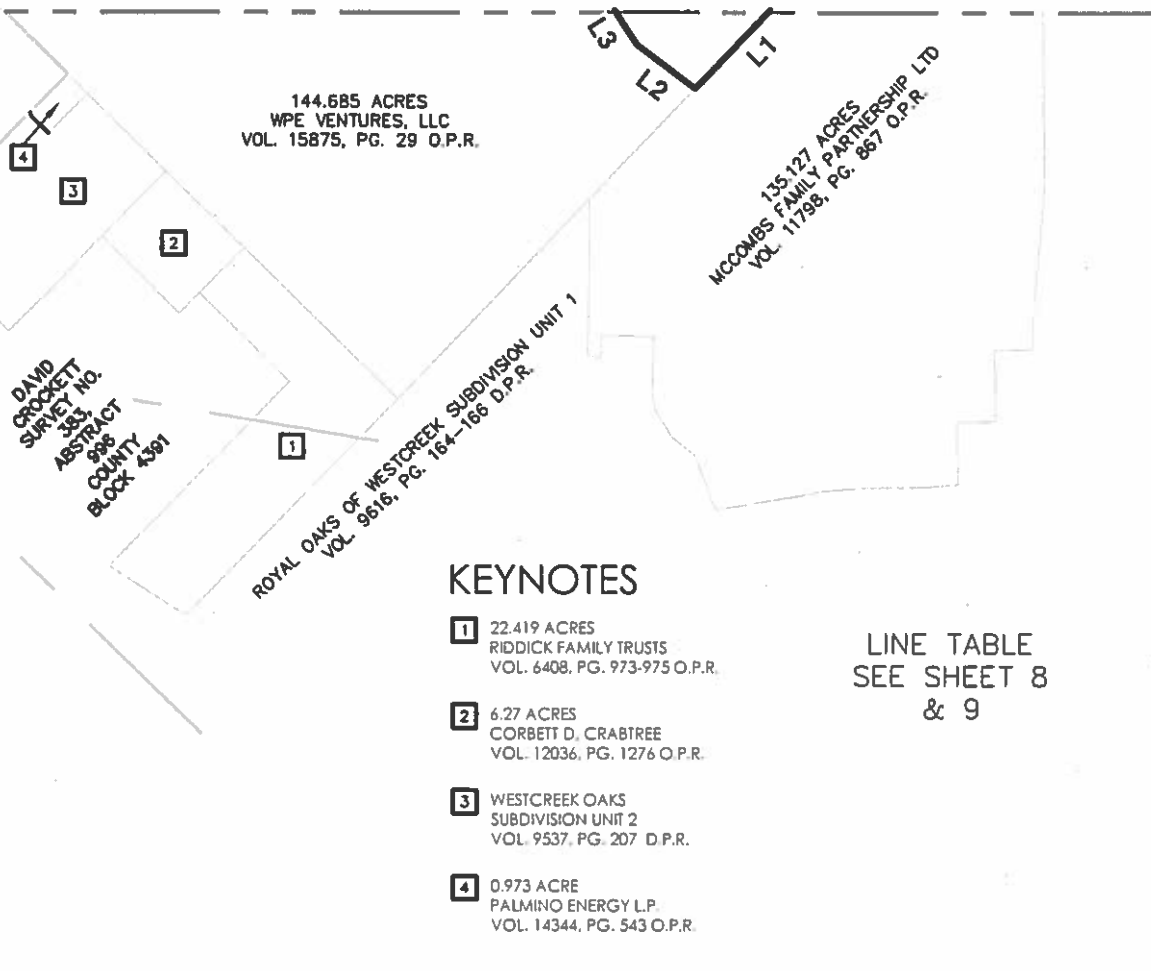
**WESTPOINTE EAST
PUBLIC IMPROVEMENT
DISTRICT**

**2382.9 ACRES
MORE OR LESS**

MATCHLINE SHEET 1

MATCHLINE
SHEET 3

MATCHLINE
SHEET 4



KEYNOTES

- 1 22.419 ACRES
RIDDICK FAMILY TRUSTS
VOL. 6408, PG. 973-975 O.P.R.
- 2 6.27 ACRES
CORBET D. CRABTREE
VOL. 12036, PG. 1276 O.P.R.
- 3 WESTCREEK OAKS
SUBDIVISION UNIT 2
VOL. 9537, PG. 207 D.P.R.
- 4 0.973 ACRE
PALMINO ENERGY L.P.
VOL. 14344, PG. 543 O.P.R.

LINE TABLE
SEE SHEET 8
& 9

**PAPE-DAWSON
ENGINEERS**

SAN ANTONIO | AUSTIN | HOUSTON | FORT WORTH | DALLAS
2800 HW LOOP 410 | SAN ANTONIO, TX 78213 | 210.275.9600
TSP# PPM# REGISTRATION 0470 | TSP# PPM# REGISTRATION 010000000

RJR

REVISED NOVEMBER 6, 2018

SHEET 2 OF 9
JOB No.: 6979-09

DR	DEED RECORDS OF BEXAR COUNTY, TEXAS
OPR	OFFICIAL PUBLIC RECORDS OF BEXAR COUNTY, TEXAS
DPR	DEED AND PLAT RECORDS OF BEXAR COUNTY, TEXAS

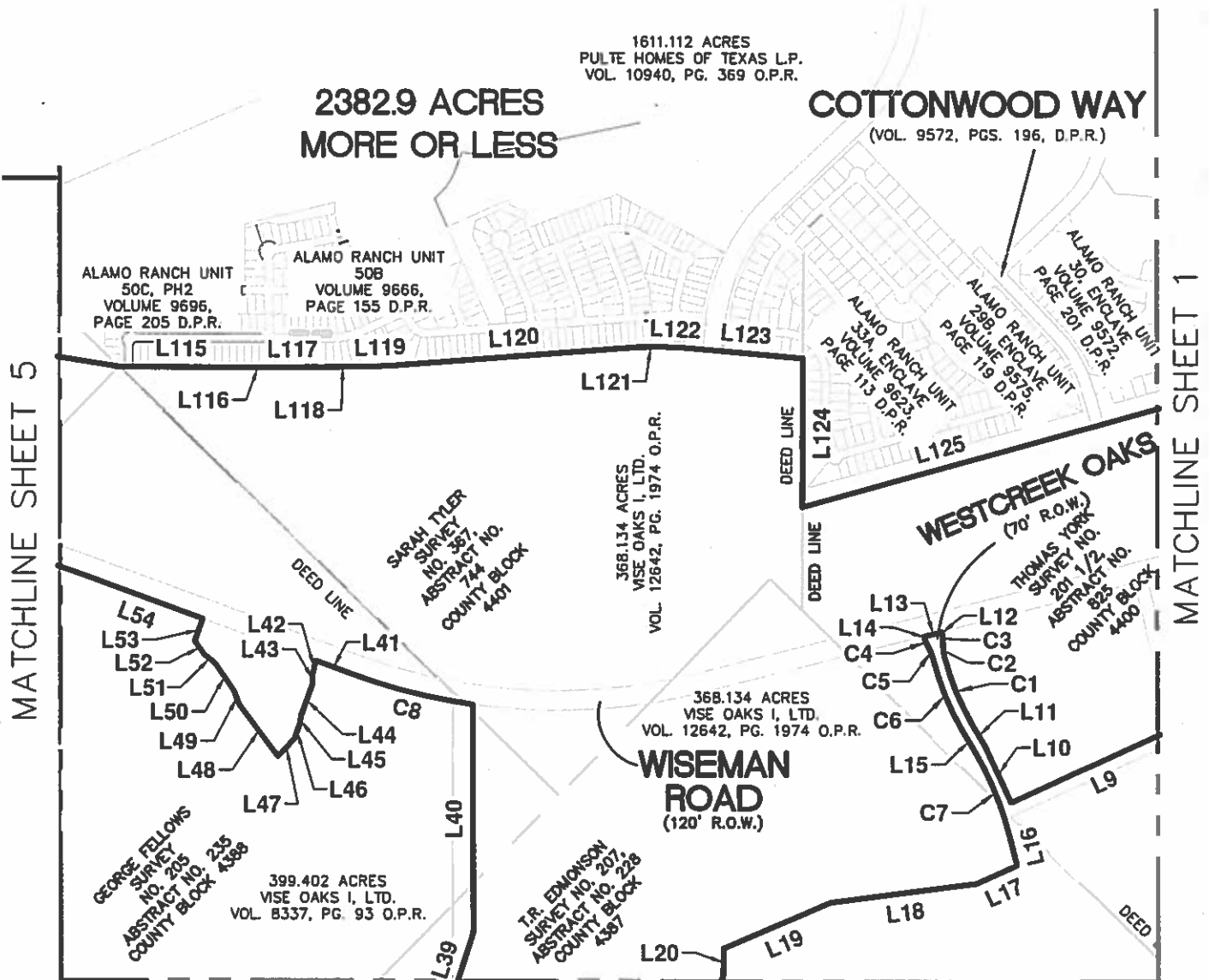
1. THE PROFESSIONAL SERVICES PROVIDED HERewith INCLUDE THE PREPARATION OF A FIELD NOTE DESCRIPTION.
2. "THIS DOCUMENT WAS PREPARED UNDER 22TAC663.21, DOES NOT REFLECT THE RESULTS OF AN ON THE GROUND SURVEY, AND IS NOT TO BE USED TO CONVEY OR ESTABLISH INTERESTS IN REAL PROPERTY EXCEPT THOSE RIGHTS AND INTERESTS IMPLIED OR ESTABLISHED BY THE CREATION OR RECONFIGURATION OF THE BOUNDARY OF THE POLITICAL SUBDIVISION FOR WHICH IT WAS PREPARED."



SCALE: 1" = 1,000'

WESTPOINTE EAST
PUBLIC IMPROVEMENT
DISTRICT

LINE TABLE
SEE SHEET 8
& 9



**PAPE-DAWSON
ENGINEERS**

SAN ANTONIO | AUSTIN | HOUSTON | FORT WORTH | DALLAS
2800 NW LOOP 418 | SAN ANTONIO, TX 78212 | 210-375.8000
TSP'S FIRM REGISTRATION 0478 | TSP's FIRM REGISTRATION 01888888

MATCHLINE SHEET 5

REVISÉ NOVEMBRE 6, 2018

SHEET 3 OF 9
JOB No.: 6979-09

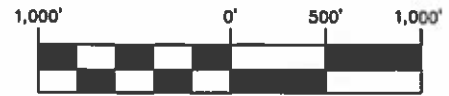
Date: Nov 05, 2018, 9:53am User ID: vralana
File: C:\Users\Vralana\appdata\local\temp\AcPublish_1588\EX8979-09 11-6-18.dwg

LEGEND:

DR DEED RECORDS OF BEXAR COUNTY,
TEXAS
OPR OFFICIAL PUBLIC RECORDS OF BEXAR
COUNTY, TEXAS
DPR DEED AND PLAT RECORDS OF BEXAR
COUNTY, TEXAS

NOTES:

1. THE PROFESSIONAL SERVICES PROVIDED
HEREWITH INCLUDE THE PREPARATION OF A
FIELD NOTE DESCRIPTION.
2. "THIS DOCUMENT WAS PREPARED UNDER
22TAC663.21, DOES NOT REFLECT THE
RESULTS OF AN ON THE GROUND SURVEY,
AND IS NOT TO BE USED TO CONVEY OR
ESTABLISH INTERESTS IN REAL PROPERTY
EXCEPT THOSE RIGHTS AND INTERESTS
IMPLIED OR ESTABLISHED BY THE CREATION
OR RECONFIGURATION OF THE BOUNDARY
OF THE POLITICAL SUBDIVISION FOR WHICH
IT WAS PREPARED."



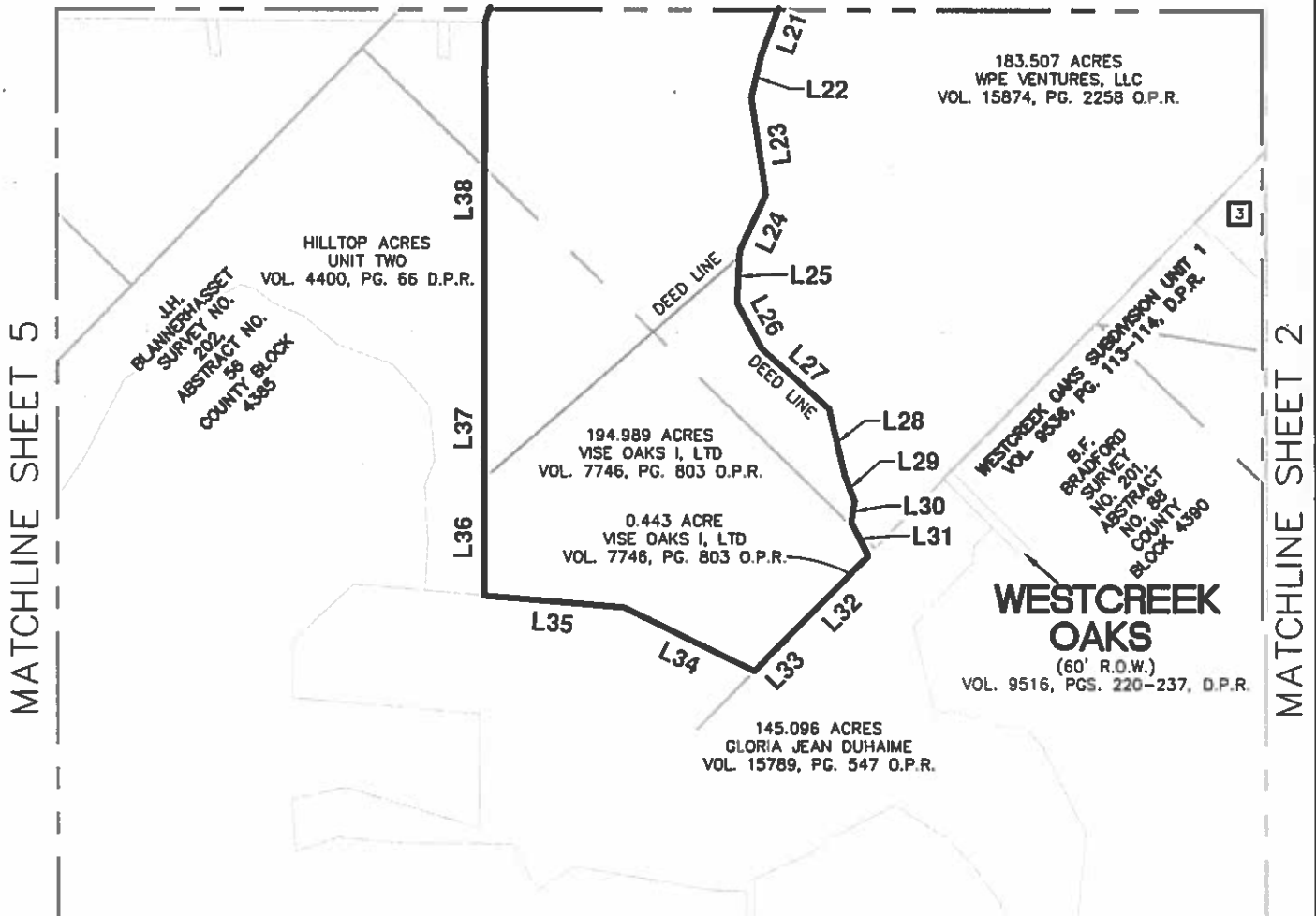
SCALE: 1" = 1,000'

LINE TABLE SEE
SHEET 8 & 9

**WESTPOINTE EAST
PUBLIC IMPROVEMENT
DISTRICT**

**2382.9 ACRES
MORE OR LESS**

MATCHLINE SHEET 3



KEYNOTES

- 3** WESTCREEK OAKS
SUBDIVISION UNIT 2
VOL. 9537, PG. 207, D.P.R.

**PAPE-DAWSON
ENGINEERS**

SAN ANTONIO | AUSTIN | HOUSTON | FORT WORTH | DALLAS
2000 NW LOOP 410 | SAN ANTONIO, TX 78215 | 210.379.9000
TXPE FIRM REGISTRATION 0470 | TXPE FIRM REGISTRATION 410000000

PR

REVISED NOVEMBER 6, 2018

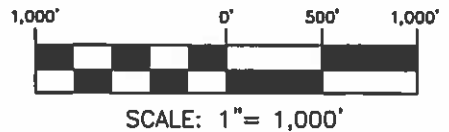
SHEET 4 OF 9
JOB No.: 6979-09

LEGEND:

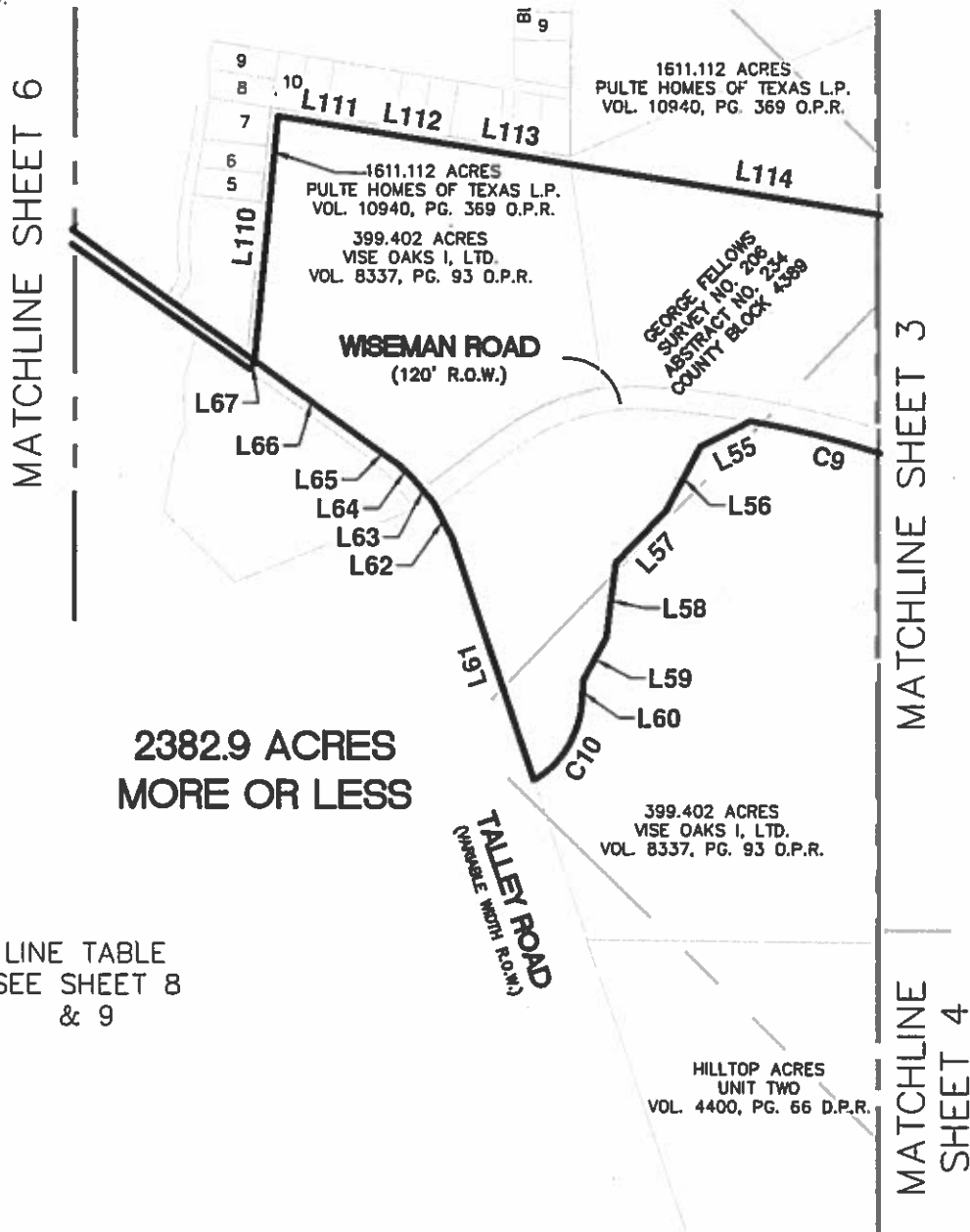
DR DEED RECORDS OF BEXAR COUNTY,
TEXAS
OPR OFFICIAL PUBLIC RECORDS OF BEXAR
COUNTY, TEXAS
DPR DEED AND PLAT RECORDS OF BEXAR
COUNTY, TEXAS

NOTES:

1. THE PROFESSIONAL SERVICES PROVIDED
HEREWITH INCLUDE THE PREPARATION OF A
FIELD NOTE DESCRIPTION.
2. "THIS DOCUMENT WAS PREPARED UNDER
22TAC663.21, DOES NOT REFLECT THE
RESULTS OF AN ON THE GROUND SURVEY,
AND IS NOT TO BE USED TO CONVEY OR
ESTABLISH INTERESTS IN REAL PROPERTY
EXCEPT THOSE RIGHTS AND INTERESTS
IMPLIED OR ESTABLISHED BY THE CREATION
OR RECONFIGURATION OF THE BOUNDARY
OF THE POLITICAL SUBDIVISION FOR WHICH
IT WAS PREPARED."



WESTPOINTE EAST PUBLIC IMPROVEMENT DISTRICT



2382.9 ACRES
MORE OR LESS

LINE TABLE
SEE SHEET 8
& 9

**PAPE-DAWSON
ENGINEERS**

SAN ANTONIO | AUSTIN | HOUSTON | FORT WORTH | DALLAS
2800 HW LOOP 418 | SAN ANTONIO, TX 78213 | 210.375.9000
TYPE FIRM REGISTRATION 0476 | TYPE FIRM REGISTRATION 01000000

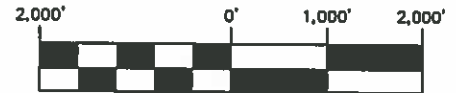
PDR

LEGEND:

DR DEED RECORDS OF BEXAR COUNTY,
TEXAS
OPR OFFICIAL PUBLIC RECORDS OF BEXAR
COUNTY, TEXAS
DPR DEED AND PLAT RECORDS OF BEXAR
COUNTY, TEXAS

NOTES:

1. THE PROFESSIONAL SERVICES PROVIDED
HEREWITH INCLUDE THE PREPARATION OF A
FIELD NOTE DESCRIPTION.
2. "THIS DOCUMENT WAS PREPARED UNDER
22TAC663.21, DOES NOT REFLECT THE
RESULTS OF AN ON THE GROUND SURVEY,
AND IS NOT TO BE USED TO CONVEY OR
ESTABLISH INTERESTS IN REAL PROPERTY
EXCEPT THOSE RIGHTS AND INTERESTS
IMPLIED OR ESTABLISHED BY THE CREATION
OR RECONFIGURATION OF THE BOUNDARY
OF THE POLITICAL SUBDIVISION FOR WHICH
IT WAS PREPARED."

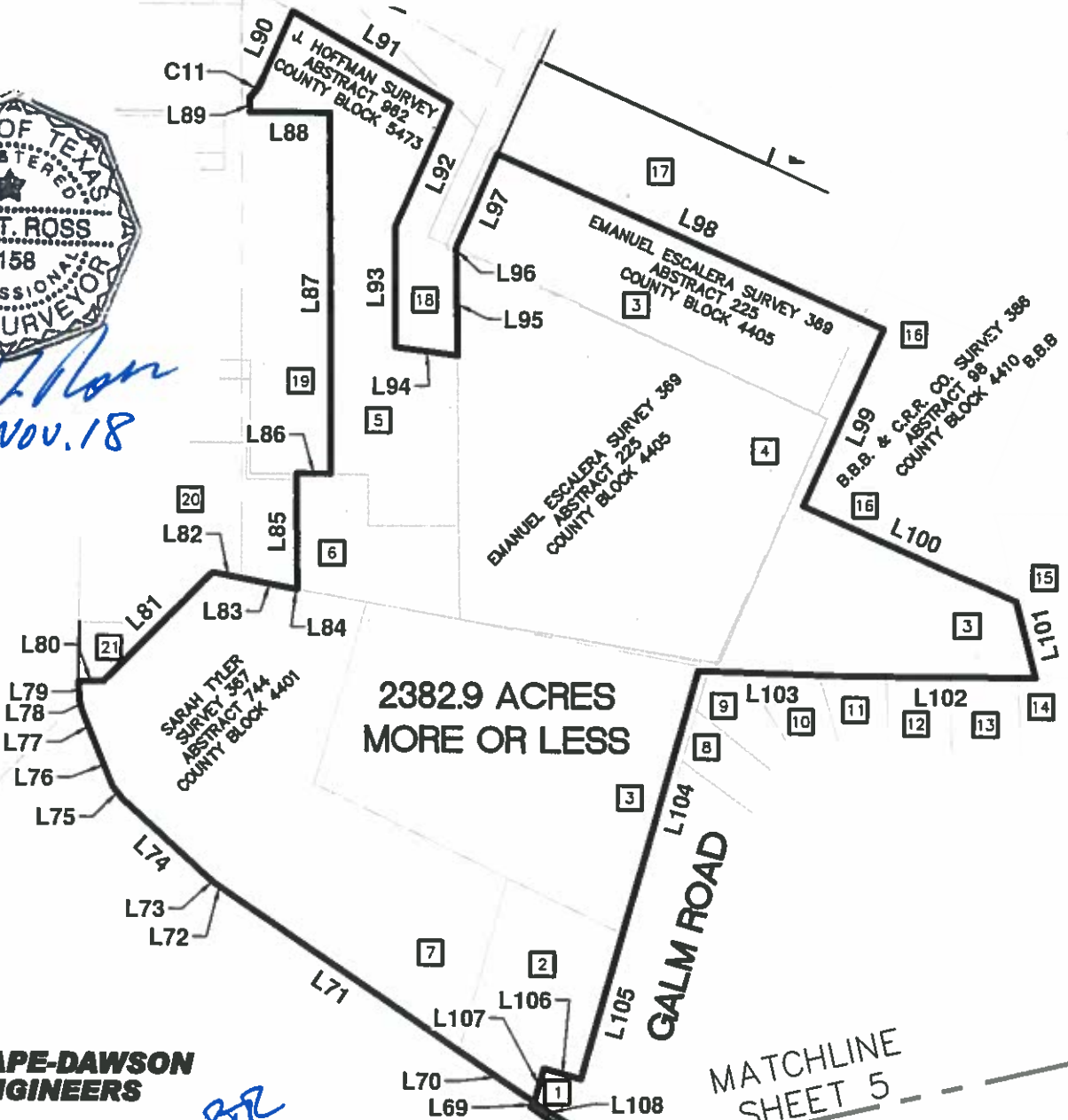


SCALE: 1"= 2,000'

LINE TABLE SEE
SHEET 8 & 9
AND THESE
KEYNOTES



Paul T. Ross
06 NOV. 18



**PAPE-DAWSON
ENGINEERS**

SAN ANTONIO | AUSTIN | HOUSTON | FORT WORTH | DALLAS
2500 NW LOOP 410 | SAN ANTONIO, TX 78213 | 210.378.9900
TYPE PUMP REGISTRATION 0470 | TYPE PUMP REGISTRATION 010000000

REVISED NOVEMBER 6, 2018

SHEET 6 OF 9
JOB No.: 6979-09

KEYNOTES

- | | | |
|---|--|---|
| <p>1 LOT 1, BLOCK 26, CB 4389
TALLEY ROAD CHURCH
SUBDIVISION
(VOL. 9621, PG. 205 DPR)</p> <p>2 74.72 ACRES
CAMPBELTON ROAD, LTD.
(VOL. 8159, PG. 542 OPR)</p> <p>3 509.64 ACRES
VISE OAKS I, LTD.
(VOL. 9438, PG. 1273 OPR)</p> <p>4 325.07 ACRES
CAMPBELTON ROAD, LTD.
(VOL. 8187, PG. 814 OPR)</p> <p>5 157.48 ACRES
VISE OAKS, LTD.
(VOL. 9437, PG. 963 OPR)</p> <p>6 51.568 ACRES
CAMPBELTON ROAD, LTD.
(VOL. 8187, PG. 828 OPR)</p> <p>7 297.00 ACRES
BECKER RANCH, LTD.
(VOL. 7723, PG. 1880 OPR)</p> <p>8 20 ACRES
CAROLYN CONNAWAY
(VOL. 16307, PG. 523 OPR)</p> <p>9 18.934 ACRES
DANIEL E BADE
(VOL. 9289, 585 OPR)</p> <p>10 14.90 ACRES
MYRA J. ANDERS
(VOL. 16210, PG. 2424 OPR)</p> | <p>11 14.500 ACRES
DERBA HEVERLY-CAMPBELL
(VOL. 14629, PG. 1687 OPR)</p> <p>12 DEAN SCHNEIDER
DOCUMENT NOT FOUND</p> <p>13 14.90 ACRES
GARY KRIMMER
(VOL. 15782, PG. 1207 OPR)</p> <p>14 ALBERT HORVATH
DOCUMENT NOT FOUND</p> <p>15 196.160 ACRES
ALT DEVELOPMENT, INC.
(VOL. 12281, PG. 757 OPR)</p> <p>16 125.955 ACRES
OSCAR W. GASS
(VOL. 11628, PG. 218 OPR)</p> <p>17 119.833 ACRES
DAVID GASS
(VOL. 5921, PG. 710 OPR)</p> <p>18 117.985 ACRES
ERNESTINE HAZEL OWINGS
(VOL. 12148, PG. 888 OPR)</p> <p>19 183.61 ACRES
WAYNE LEE BENKE
(VOL. 13514, PG. 1496 OPR)</p> <p>20 101.216 ACRES
DONALD S THOMAS
(VOL. 6362, PG. 1523 OPR)</p> <p>21 10.000 ACRES
JOSEPH M. FAUNCE
(VOL. 8979, PG. 1056 OPR)</p> | <p>22 8.861 ACRES
RANDALL BENDELE
(VOL. 11140, PG. 2017 OPR)</p> <p>23 6.871 ACRES
RANDALL BENDELE
(VOL. 11140, PG. 2024 OPR)</p> <p>24 6.871 ACRES
TERRY M. HECT
(VOL. 11079, PG. 1579 OPR)</p> <p>25 PORTION OF 199.948 ACRES
NATIONAL SKEET SHOOTING
ASSOCIATION
(VOL. 7055, PG. 728 DR)</p> <p>26 LOT 901, BLOCK 15, CB 4408
WESTPOINTE NORTH UNIT 3A
(VOL. 9646, PG. 141, DPR)</p> <p>27 PORTION OF A 185.151 ACRE TRACT
SPH CULEBRA, LTD.
(VOL. 10851, PG. 2265 OPR)</p> <p>28 95.422 ACRES
KB HOME LONE STAR, LP
(VOL. 11918, PG. 1012 OPR)</p> <p>29 1.258 ACRES
MYRTLE LUELLA NICKEL
(VOL. 12949, PG. 1808 OPR)</p> <p>30 40 ACRES
LOS SUENOS DEVELOPMENTS, LP
(VOL. 12887, PG. 1279 OPR)</p> |
|---|--|---|



SAN ANTONIO | AUSTIN | HOUSTON | FORT WORTH | DALLAS
2800 NW LOOP 418 | SAN ANTONIO, TX 78213 | 210.378.3000
TYPE PPM REGISTRATION 6478 | TYPE PPM REGISTRATION 610020000

RJR

LINE TABLE		
LINE	BEARING	LENGTH
L1	S43°48'45"W	1176.29'
L2	N53°11'27"W	375.68'
L3	N32°46'15"W	290.89'
L4	N48°14'53"W	966.45'
L5	N65°22'46"E	513.08'
L6	N24°37'13"W	1736.62'
L7	S65°22'42"W	2380.55'
L8	N21°25'19"W	80.14'
L9	S65°23'24"W	1136.35'
L10	N24°45'26"W	373.99'
L11	N30°10'15"W	154.89'
L12	N14°16'26"W	8.60'
L13	S75°41'54"W	110.00'
L14	S14°16'26"E	9.30'
L15	S30°10'15"E	154.89'
L16	S14°18'06"E	189.39'
L17	S65°23'37"W	270.29'
L18	S82°34'35"W	897.63'
L19	S66°38'14"W	708.02'
L20	S01°16'33"W	168.70'

LINE TABLE		
LINE	BEARING	LENGTH
L21	S20°34'56"W	335.24'
L22	S13°18'46"W	246.46'
L23	S08°46'42"E	541.45'
L24	S25°10'40"W	344.97'
L25	S03°11'59"W	285.08'
L26	S28°18'05"E	293.73'
L27	S48°26'43"E	501.96'
L28	S13°09'46"E	379.81'
L29	S21°21'15"E	151.06'
L30	S09°20'22"W	115.54'
L31	S26°32'27"E	210.14'
L32	S44°52'31"W	649.56'
L33	S44°40'13"W	255.93'
L34	N64°13'52"W	808.38'
L35	N85°14'40"W	778.41'
L36	N00°04'43"W	646.28'
L37	N00°15'39"E	566.00'
L38	N00°11'22"E	1970.76'
L39	N18°13'27"E	412.55'
L40	N00°00'00"E	1387.89'

LINE TABLE		
LINE	BEARING	LENGTH
L41	N69°53'44"W	231.27'
L42	S13°17'27"W	91.14'
L43	S00°24'20"E	55.38'
L44	S20°07'22"W	207.63'
L45	S08°48'14"W	47.60'
L46	S20°05'54"W	92.91'
L47	S43°48'56"W	149.34'
L48	N36°50'57"W	390.00'
L49	N21°19'38"W	89.63'
L50	N34°31'32"W	206.45'
L51	N50°28'26"W	83.43'
L52	N36°37'34"W	97.97'
L53	N20°07'22"E	145.44'
L54	N69°53'44"W	760.34'
L55	S62°58'32"W	301.87'
L56	S27°56'42"W	383.15'
L57	S44°04'58"W	389.57'
L58	S07°12'17"W	404.68'
L59	S28°52'39"W	252.46'
L60	S04°16'56"W	131.13'

LINE TABLE		
LINE	BEARING	LENGTH
L61	N18°45'00"W	1355.12'
L62	N27°56'41"W	208.99'
L63	N40°23'20"W	178.04'
L64	N46°39'39"W	101.13'
L65	N54°25'40"W	205.26'
L66	N54°31'55"W	735.76'
L67	S35°30'04"W	50.00'
L68	N55°08'40"W	3874.22'
L69	N33°54'02"E	68.64'
L70	N56°05'56"W	1056.81'
L71	N56°03'10"W	3353.39'
L72	N55°40'44"W	123.01'
L73	N48°45'49"W	74.90'
L74	N47°54'04"W	1393.64'
L75	N37°36'54"W	191.92'
L76	N22°31'48"W	534.60'
L77	N21°51'40"W	434.84'
L78	N14°04'38"W	111.10'
L79	N02°24'59"W	219.94'
L80	N89°55'43"E	288.20'

LINE TABLE		
LINE	BEARING	LENGTH
L81	N44°44'21"E	1818.26'
L82	S79°00'40"E	370.48'
L83	S79°03'48"E	627.41'
L84	S80°04'01"E	17.57'
L85	N00°18'55"W	1359.54'
L86	S89°39'39"E	398.71'
L87	N00°23'16"W	4234.94'
L88	S89°57'39"W	942.63'
L89	N00°19'26"W	169.55'
L90	N23°50'08"E	876.75'
L91	S60°10'17"E	2148.10'
L92	S24°00'59"W	1585.98'
L93	S00°16'25"E	1414.15'
L94	S82°50'21"E	744.30'
L95	N01°06'20"W	1208.49'
L96	N01°04'31"W	65.12'
L97	N23°41'38"E	1199.72'
L98	S66°04'16"E	4987.47'
L99	S24°28'44"W	2283.24'
L100	S66°09'55"E	2739.12'

LINE TABLE		
LINE	BEARING	LENGTH
L101	S14°11'09"E	920.51'
L102	N89°52'10"W	2183.95'
L103	N88°20'05"W	1773.53'
L104	S15°57'59"W	3219.36'
L105	S15°48'52"W	1777.37'
L106	N74°02'07"W	449.99'
L107	S15°57'55"W	411.03'
L108	S57°50'02"E	428.03'
L109	S54°29'56"E	3438.59'
L110	N05°29'27"E	1307.77'
L111	S80°51'38"E	520.24'
L112	S81°00'41"E	390.48'
L113	S80°50'12"E	671.21'
L114	S80°58'12"E	2073.47'
L115	S89°40'45"E	768.77'
L116	S89°58'46"E	156.62'
L117	N89°27'14"E	275.48'
L118	N89°06'14"E	333.80'
L119	N88°00'40"E	134.58'
L120	N85°35'08"E	1510.78'

PRC

LINE TABLE		
LINE	BEARING	LENGTH
L121	N88°52'57"E	137.30'
L122	S87°31'46"E	158.89'
L123	S85°00'37"E	704.71'
L124	S00°21'06"W	903.61'
L125	N74°28'54"E	1818.93'
L126	N74°27'12"E	1803.85'
L127	N74°23'23"E	159.65'
L128	N74°38'32"E	664.89'
L129	N73°55'26"E	311.97'
L130	N74°31'19"E	312.00'
L131	N74°37'19"E	514.00'
L132	N74°31'19"E	140.60'
L133	N74°31'12"E	547.70'
L134	N74°36'12"E	698.35'
L135	S02°38'02"W	264.44'
L136	S06°19'31"W	62.14'
L137	S01°27'07"W	1156.95'
L138	S00°06'02"W	632.47'
L139	S04°23'07"W	305.79'
L140	S00°22'05"E	573.29'

LINE TABLE		
LINE	BEARING	LENGTH
L141	S15°22'59"E	347.14'
L142	S00°20'21"E	993.78'

CURVE TABLE					
CURVE	RADIUS	DELTA	CHORD BEARING	CHORD	LENGTH
C1	1615.00'	15°52'09"	N22°14'11"W	445.88'	447.31'
C2	272.22'	16°40'39"	N06°46'40"W	78.96'	79.24'
C3	195.30'	18°21'52"	N04°58'31"W	62.33'	62.60'
C4	190.00'	16°47'48"	S22°40'19"E	55.50'	55.70'
C5	270.00'	16°46'07"	S22°41'10"E	78.74'	79.02'
C6	1685.57'	16°04'38"	S22°07'52"E	471.42'	472.97'
C7	1965.00'	15°52'09"	S22°14'11"E	542.51'	544.25'
C8	3632.62'	12°02'07"	N75°54'47"W	761.65'	763.06'
C9	4940.84'	10°32'56"	N75°10'11"W	908.38'	909.66'
C10	508.81'	55°58'03"	S32°29'46"W	477.49'	497.02'
C11	746.20'	20°02'18"	N33°51'23"E	259.64'	260.97'