



Edwards Aquifer Protection Program



PARKS & RECREATION
SAN ANTONIO

Fee Simple and Conservation Easement Acquisitions

City Council

March 7, 2019

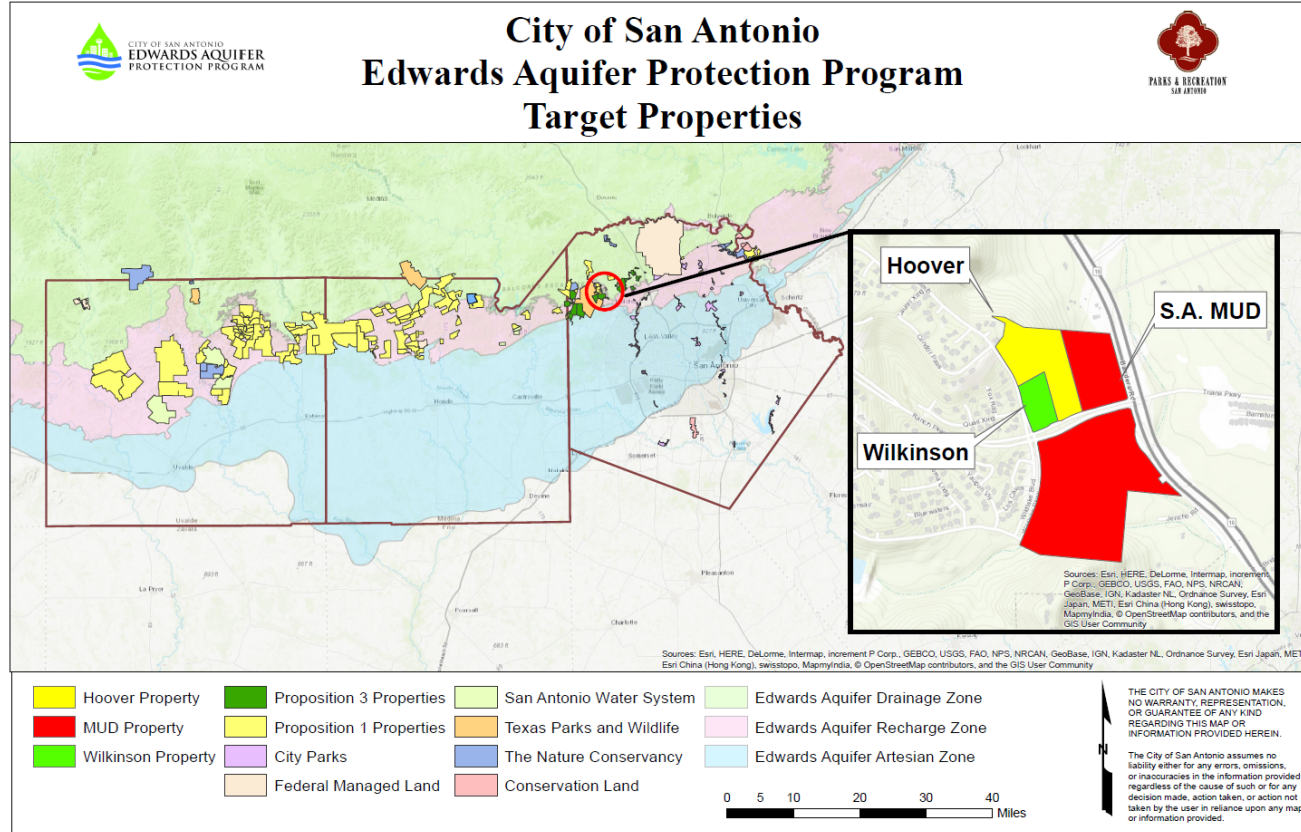
Parks and Recreation Department

Fee Simple and Conservation Easement Acquisitions

| Property | Acqquisation Type | Acres | Acquisition Cost |
|-----------------|--------------------------|------------------|-----------------------|
| Hoover Tract | Fee Simple | 12.6 | \$884,048.35 |
| Wilkinson Tract | Fee Simple | 4.14 | \$458,695.10 |
| SA MUD No. 1 | Conservation Easement | 50.51 + 16.74 | \$102,668.48 |
| TOTAL | | 67.25 | \$1,445,411.93 |

Increases Protected Lands by 67 acres

Total Land Protected: 157,215 acres



Acquisition Benefits

- SA MUD No. 1 to own and manage properties;
City to hold Conservation Easement
- \$1.44M investment is 21% of Conservation Easement's appraised market value (\$6.76M)
- Property is located over the Edwards Aquifer Recharge and Contributing Zones
- Located in Helotes Creek watershed
- Low to Moderate water quantity and Moderate to High water quality benefits
- Results in cumulative protection of over 9,800 acres in Bexar County



Recommendation

- **Staff recommends approval**