



# Edwards Aquifer Protection Program



PARKS & RECREATION  
SAN ANTONIO

## Fee Simple and Conservation Easement Acquisitions

City Council

March 7, 2019

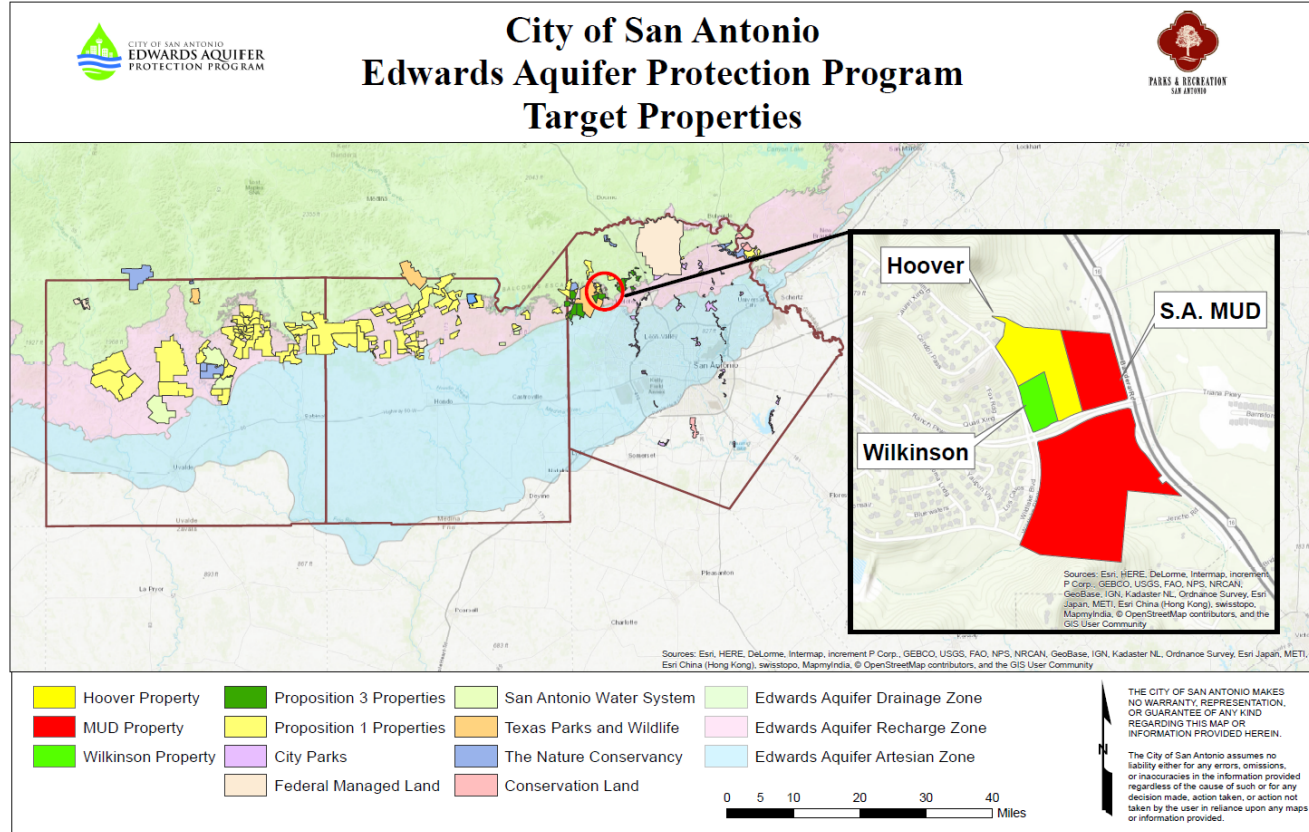
Parks and Recreation Department

# Fee Simple and Conservation Easement Acquisitions

Property	Acqquisation Type	Acres	Acquisition Cost
Hoover Tract	Fee Simple	12.6	\$884,048.35
Wilkinson Tract	Fee Simple	4.14	\$458,695.10
SA MUD No. 1	Conservation Easement	50.51 + 16.74	\$102,668.48
<b>TOTAL</b>		<b>67.25</b>	<b>\$1,445,411.93</b>

# Increases Protected Lands by 67 acres

## Total Land Protected: 157,215 acres



# Acquisition Benefits

- SA MUD No. 1 to own and manage properties;  
City to hold Conservation Easement
- \$1.44M investment is 21% of Conservation Easement's appraised market value (\$6.76M)
- Property is located over the Edwards Aquifer Recharge and Contributing Zones
- Located in Helotes Creek watershed
- Low to Moderate water quantity and Moderate to High water quality benefits
- Results in cumulative protection of over 9,800 acres in Bexar County



# Recommendation

- **Staff recommends approval**