

Priority Health Issues Prioritization Initiative 2018-2019



By: Colleen M. Bridger, MPD, PhD
Director



CITY OF SAN ANTONIO
METROPOLITAN HEALTH DISTRICT

Metro Health's Priority Health Issues Initiative: Overview of presentation

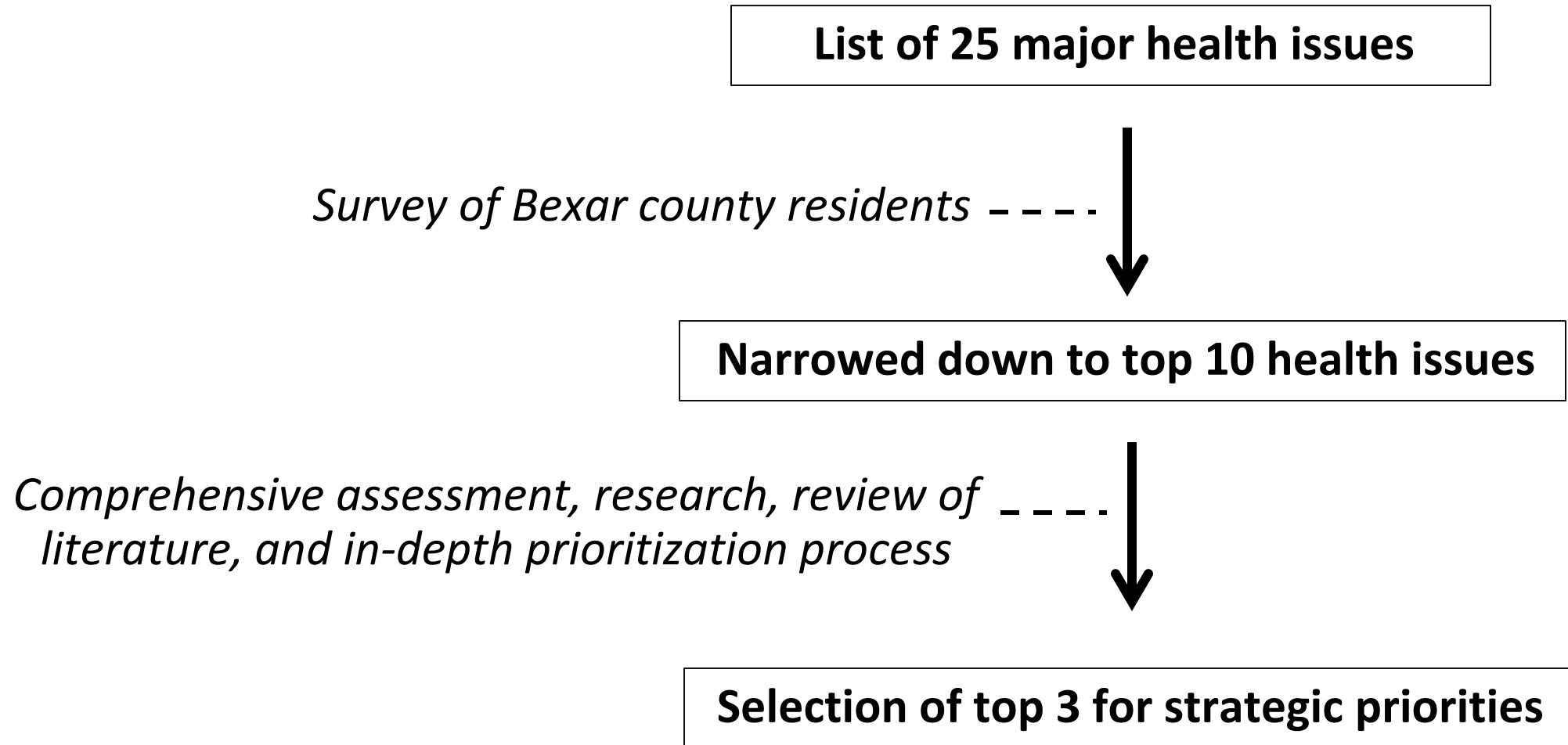
With whom did we talk?

How did we communicate information and gather input?

What did they tell us?

How will their input be used?

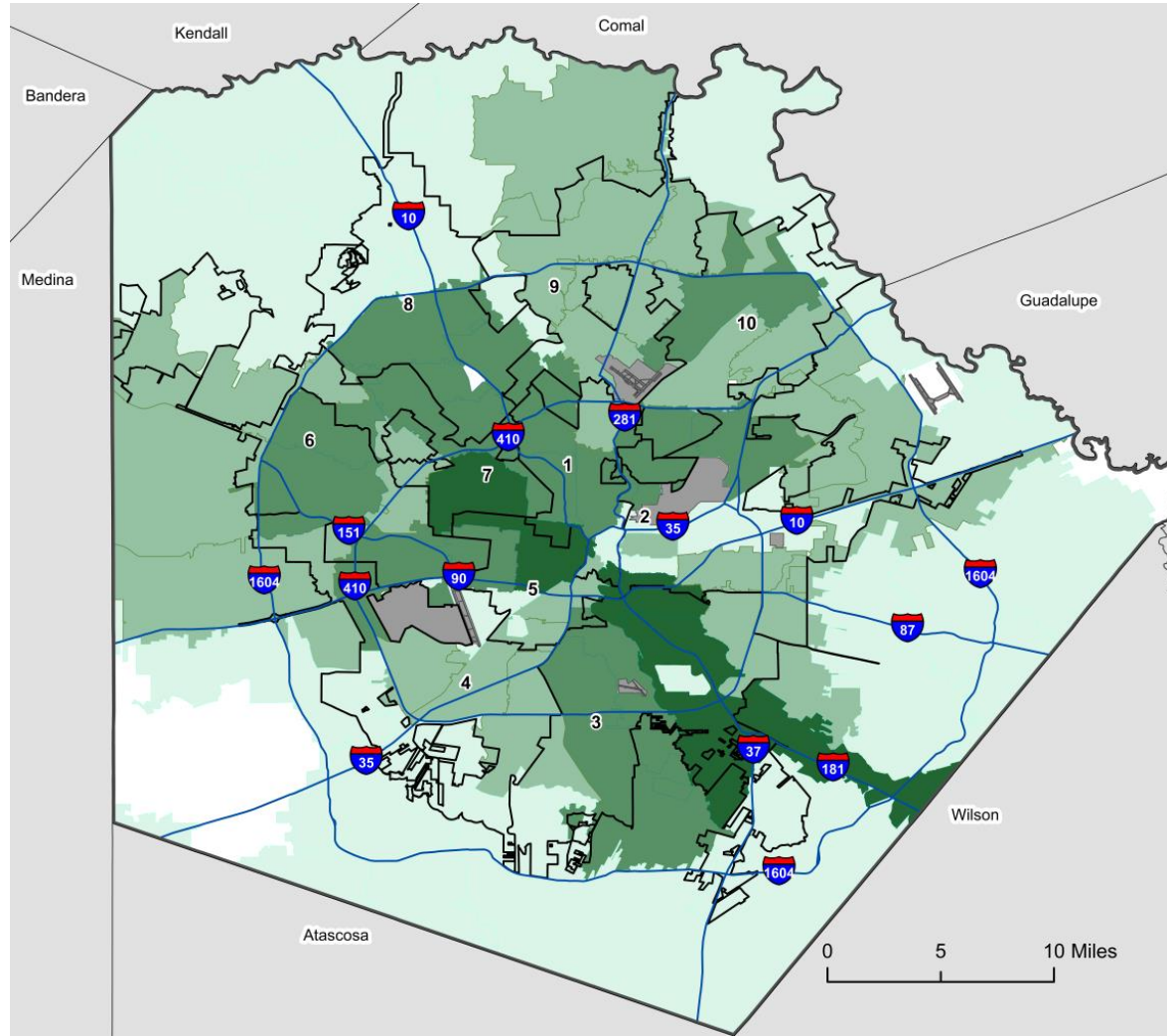
Flow chart of overall process



1. “With whom did we talk?”

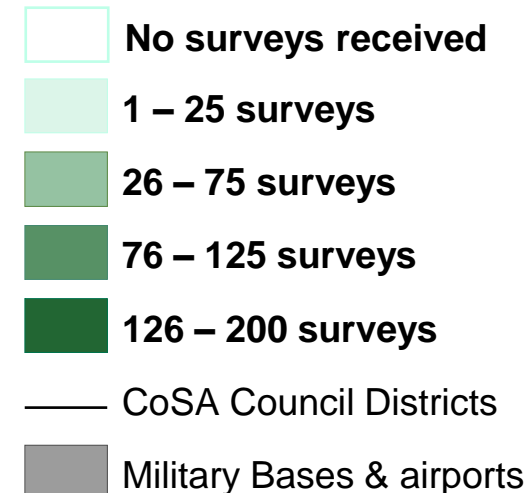
2018 Priority Health Issues Survey – Participant Characteristics

Number of Surveys Received by Residential Zip Code, 2018



4,147 Bexar County residents responded (3,801 with demographic data collected)

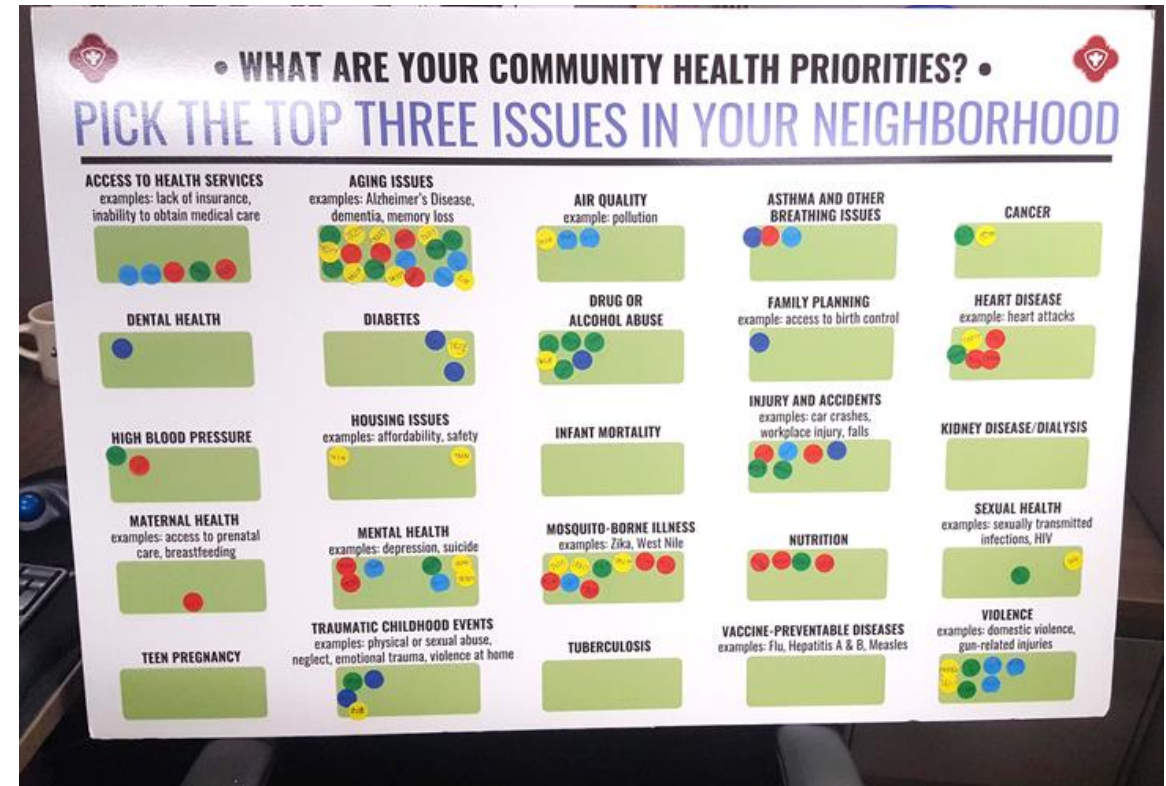
- 74% Female
- 55% Hispanic/Latino, 27% White, 5% Black
- Largest age groups were: 25-34, 35-44



2. “How did we communicate information and gather input?”

2018 Priority Health Issues Survey

Interactive survey board at all 6 SpeakUP SA events



2018 Priority Health Issues Survey

Electronic Surveys via numerous social media platforms, websites, local media outlets, partner organizations, and Universities



Metro Health wants to know...



What's your health priority?

RIVARD Report

Nonprofit Journalism for a Better San Antonio.

NEWSLETTER

DO

ELECTIONS 2019 GOV & POLITICS EDUCATION ARTS & CULTURE BUSINESS & TECH ENVIRONMENT HEALTH & WELLNESS

Don't Miss Greg Brockhouse Officially Launches Mayoral Campaign

HEALTH & WELLNESS

San Antonio's Metro Health Seeks Community Input on Public Health Priorities

ROSEANNA GARZA | OCTOBER 25, 2018

f LIKE t TWEET e EMAIL p PRINT in SHARE c COMMENTS o MORE



clarity child guidance center
healing young minds & hearts

in the news

November 2 | 2018

San Antonio Metro Health seeks community input on public health priorities

The San Antonio Metropolitan Health District is seeking community input to create their strategic priorities for the coming year. Mental health is one of the categories, along with 21 other health concerns. They need 5,000 responses to this 2-minute survey. If you haven't completed the survey and would like to participate, please [click here](#).



Read this [Rivard Report article](#) for more information about the survey.

2018 Priority Health Issues Survey

Paper surveys via community organizations and Metro Health Programs:

- Healthy Start
- WIC
- Healthy Neighborhoods
- Stand Up SA
- HIV/STD clinics
- Immunization clinics

What are your community's health priorities?

The San Antonio Metropolitan Health District would like your help in identifying the areas of health that are most important to you in your community.

1. What would you say are the three (3) biggest health issues in your community?
(Please choose three from the list below)

- ☐ Access to Health Services (examples: lack of insurance, inability to obtain medical care)
- ☐ Aging Issues (examples: Alzheimer's Disease, dementia, memory loss, falls)
- ☐ Air Quality (example: pollution)
- ☐ Asthma and other breathing problems
- ☐ Cancer
- ☐ Dental Health
- ☐ Diabetes
- ☐ Drug or Alcohol Abuse
- ☐ Family planning (example: access to birth control)
- ☐ Heart Disease (example: heart attacks)
- ☐ High blood pressure
- ☐ Housing issues (examples: affordability, safety)
- ☐ Infant Mortality
- ☐ Injury and accidents (examples: car crashes, workplace injury, Falls)
- ☐ Kidney Disease/Dialysis
- ☐ Maternal Health (example: access to prenatal care, breastfeeding)
- ☐ Mental Health (examples: Depression, suicide)
- ☐ Mosquito-borne Illness (examples: Zika, West Nile)
- ☐ Nutrition (examples: food deserts, access to healthy options, sugary drinks)
- ☐ Sexual Health (example: Sexually transmitted infections, HIV)
- ☐ Teen pregnancy
- ☐ Traumatic Childhood Events (examples: physical abuse or neglect, sexual abuse, emotional abuse, violence in the house)
- ☐ Tuberculosis
- ☐ Vaccine-Preventable Diseases (examples: Flu, Hepatitis A & B, Measles)
- ☐ Violence (example: domestic violence, gun-related injuries)

2. What is your zip code? _____

3. What is your sex/gender?

- ☐ Male
- ☐ Female
- ☐ Prefer to self-describe (please specify): _____
- ☐ I prefer not to answer

3. “What did they tell us?”

Results from the 2018 Priority Health Issues Survey

Overall Top 10 Health Issues selected by Participants
Access to Health Services
Aging Issues
Dental Health
Diabetes
Drug and Alcohol Abuse
Housing issues
Mental Health
Nutrition
Traumatic Childhood Events
Violence

3. “How was their input used?”

Fact Sheets for each of the top 10 Health Issues

We then compiled comprehensive, informational fact sheets for each health issue

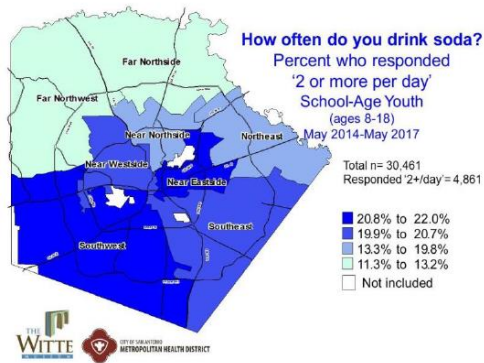
- Up-to-date data
- Details on risk factors for the issue
- Brief account of current efforts in Bexar County to address the issue
- Brief account of evidence-based and policy interventions for the issue

CITY OF SAN ANTONIO METROPOLITAN HEALTH DISTRICT Bexar County Identified Priority Health Issue: Nutrition

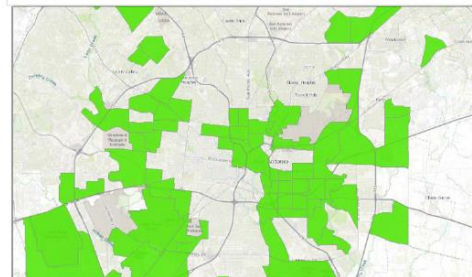
Health Impact Index: 57

Nutrition in San Antonio

- Unhealthy eating is a major risk factor for chronic diseases like type 2 diabetes, cancer, and heart disease.
- Heart disease and cancer are consistently among the top 5 causes of mortality in Bexar County, overall as well as according to sex/gender and race/ethnicity¹



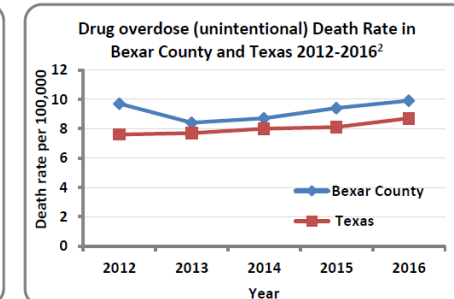
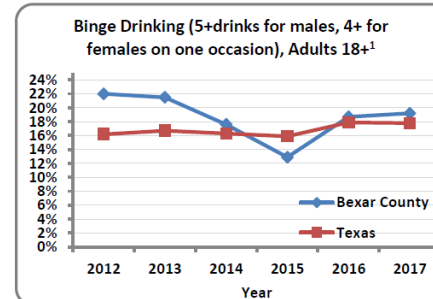
- Healthy food access is an issue for many in Bexar County:
 - 11% of total population is estimated to be food insecure
 - A fifth of the county is considered a food desert²



CITY OF SAN ANTONIO METROPOLITAN HEALTH DISTRICT Bexar County Identified Priority Health Issue: Drug and Alcohol Abuse

Health Impact Index=44.5

Trends and current state of drug and alcohol abuse



Nationally

- Each year more than 2,200 alcohol overdose deaths occur in the United States. 76% of those are men.³
- 9,967 deaths occurred in motor vehicle crashes while driving under the influence of alcohol, which is 31% of all traffic-related fatalities in the United States.³

Health Impact Index for each of the Top 10 Health Issues

For each health issue, we created a health impact index * based on the following criteria:

Size and scope of the health issue:

- % of population impacted

Seriousness of the health issue:

- Urgency
- Cost/economic impact
- Morbidity/Mortality

Average of all Interventions considered:

- Effectiveness
- Feasibility
- Acceptance by population and community

*based on the Hanlon Method,
recommended by NACCHO

Overall Top 10 Health Issues	Health Impact Index
Access to Health Services	52.5
Aging Issues	51.2
Dental Health	33
Diabetes	45.5
Drug or Alcohol Abuse	44.5
Housing issues	40.5
Mental Health	47
Nutrition	57
Traumatic Childhood Events	60
Violence	54

Maximum possible score for each = 75

1/26 Community and Partner Prioritization Meeting

- **Over 30 community members and representatives from key partner organizations participated in a 4-hour prioritization process**
 - In-depth review of 10 health priorities
 - Identified selection criteria
 - Engaged in rating and ranking process



Rating and Ranking of Health Priorities

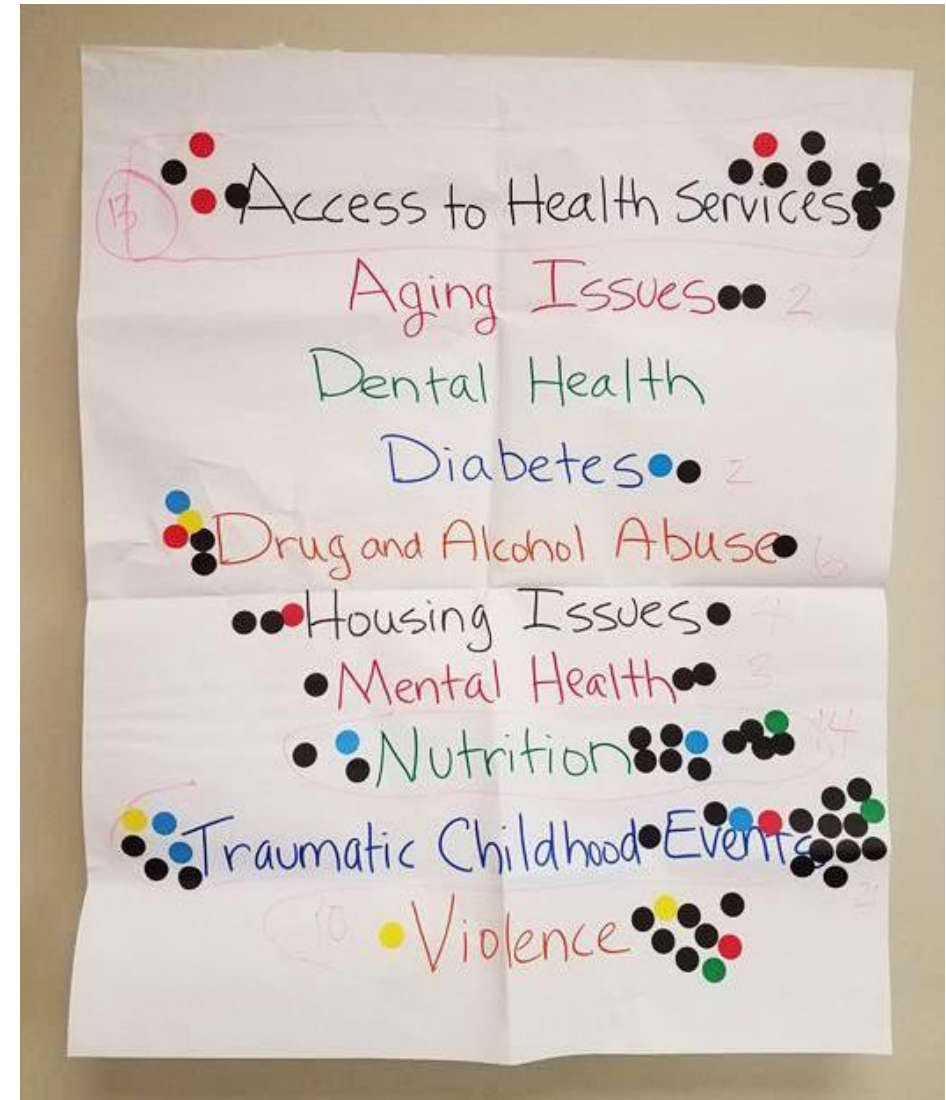
Group prioritization Step 1. Each member rated each of 10 Health Priorities using Selection Criteria and ranked them based on rating.

Health Priorities (Hanlon Score)	Hanlon Score* • Size • Seriousness • Availability of interventions *score divided by 5	Selection Criteria					Total Rating (add scores from each column)	Ranking (1= highest total rating, 10=lowest total rating)
		Capacity Community's capacity to act on the issue 1: few/no partners 2: some partners 3: many partners	Impact Ability to have measureable impact on the issue 1: weak ability 2: moderate ability 3: strong ability	Root Cause This issue can cause or worsen other problems 1: doesn't cause other problems 2: sometimes causes other problems 3: causes many other problems	Equity This issue impacts groups who have been excluded or marginalized in the past 1: low/no extra impact 2: some extra impact 3: high extra impact	Intervene Early There is an opportunity to intervene early to prevent or lessen the impact of the problem 1: difficult to intervene early 2: can intervene to lessen impact 3: can intervene to prevent problem		
Access to Health Services (52.5)	11							
Aging Issues (51.2)	10							
Dental Health (33)	7							
Diabetes (45.5)	9							

Voting for top priorities using hot dot exercise

Group Prioritization Step 2:

Using three sticky dots, each member placed one dot next to each of the top three priority health issues THEY had identified through the rating and ranking process (i.e. step 1)



Final individual votes cast

Group Prioritization Step 3:

Out of the top four priority health issues identified by the group in Step 2, each members recorded their top three priority health issues

Staff collected rating/ranking sheet and tallied final votes to determine our top three priority health issues.

	Top three health issues for Metro Health’s Strategic priorities:
1.	Access to Health Care
2.	Adverse Childhood Experiences
3.	Nutrition

Access to Care

Focus Areas

1. Preventing depression and anxiety
2. Economic stability
3. Immigrant-friendly services



Stress



Anxiety



Feeling down
or hopeless



Irritability or
moodiness



Trouble sleeping



ACEs / Trauma Informed Care

Focus Areas:

1. Community Awareness
2. Healthy Teen relationships
3. Parent Support



**Strong
Communities
Raise Strong
Kids**



Nutrition

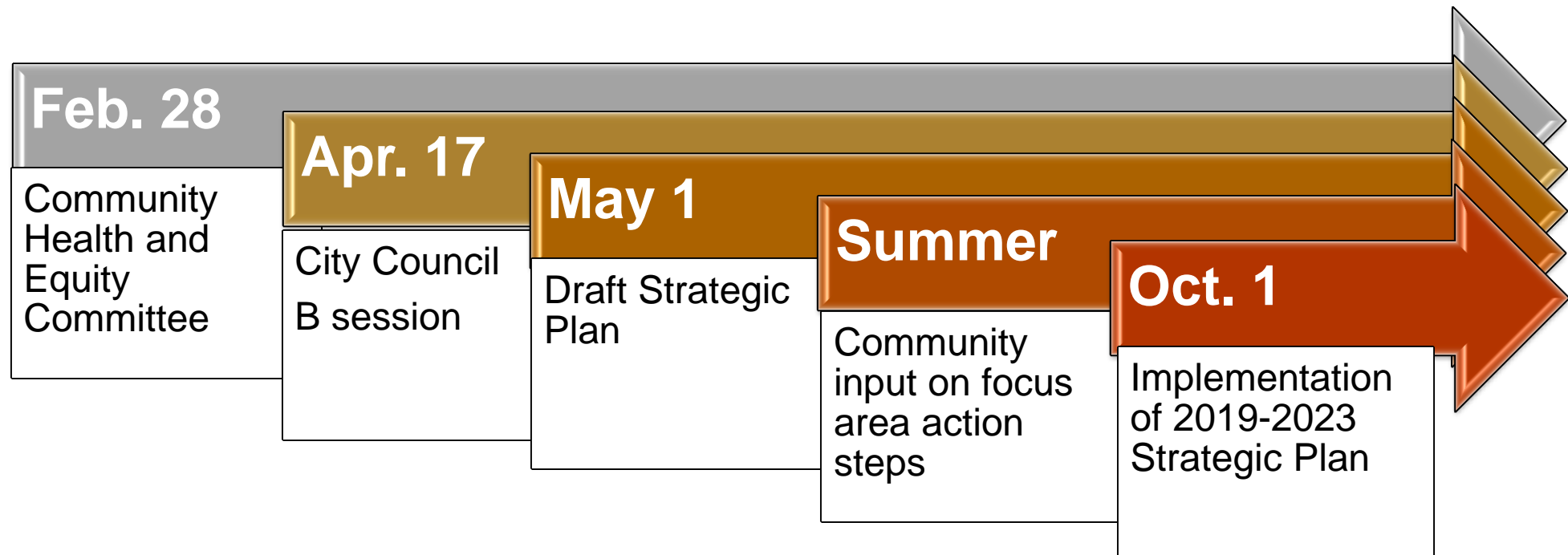
Focus Areas

1. Childhood Nutrition
2. Access to Affordable Healthy Food
3. Employer Based Nutrition Standards



Next Steps

- Form Priority Health Issue Workgroups
 - Access to Care – Dr. Junda Woo
 - Nutrition – Kathy Shields
 - ACEs/Trauma Informed Care – Ellen Spitsen



Thank you. Any Questions?



CITY OF SAN ANTONIO
METROPOLITAN HEALTH DISTRICT

Colleen M. Bridger, MPH, PhD
Director