

Date Source: City of San Antonio Enterprise GIS, Bear Metro 911, Bear Appraisal District
 The Geographic Information System Product, provided by the City of San Antonio is provided "as is" without warranty of any kind, and the City of San Antonio expressly disclaims all express and implied warranties, including but not limited to the implied warranty of merchantability and the use of the information provided by the City of San Antonio in terms of accuracy, reliability, timeliness, and completeness. The City of San Antonio does not warrant, guarantee, or make any representation regarding the use, or the results of the use, of the information provided by the City of San Antonio. The City of San Antonio is not responsible for any errors or omissions in the information provided by the City of San Antonio. The City of San Antonio is not responsible for any errors or omissions in the information provided by the City of San Antonio. The City of San Antonio is not responsible for any errors or omissions in the information provided by the City of San Antonio.
 Map Created by: Gustavo Gutierrez
 Map Last Edited: 3/25/2019
 Map File Location: \\fscommon\misc\29\GIS\Pin90\plan_8\Archived\Neighborhoods
 Land_Use\Amendments\Amend_1911600003_10ECorridor_B&W.mxd
 PDF Filename: 190305.pdf



200' Notification Area

Proposed Regional Commercial



Low Density Residential



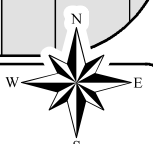
High Density Residential



Community Commercial



Parks/Open Space



City of San Antonio
 Planning and Community
 Development Department
 John M. Dugan, AICP
 Director
 City of San Antonio Planning and
 Community Development Department
 PO Box 839968
 San Antonio, TX 78283



IH-10 E Corridor Perimeter Plan **Proposed Plan Amendment 1911600003 Area**