



Pre-K4SA

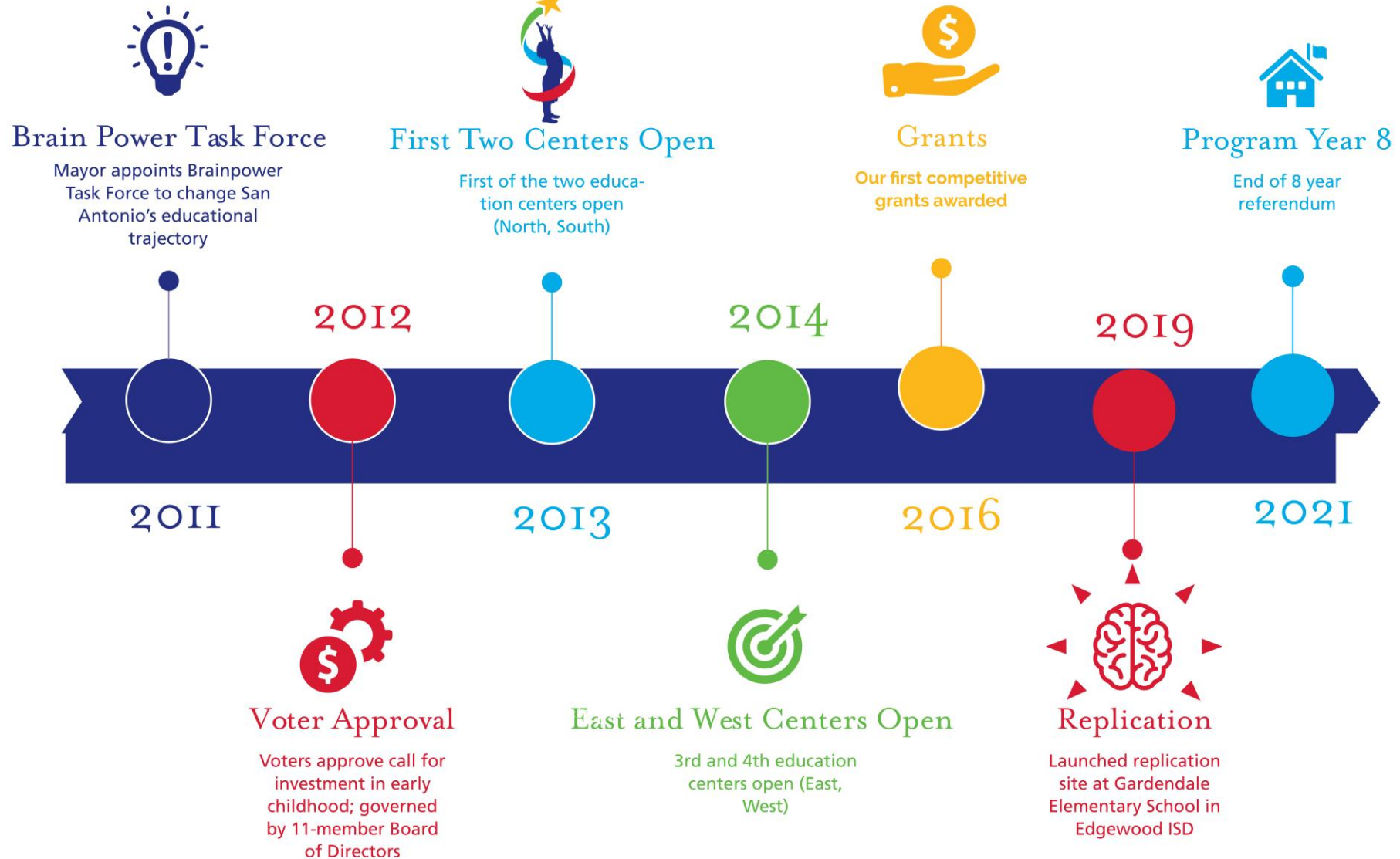
Early Inspiration. Future Success.



Our Vision

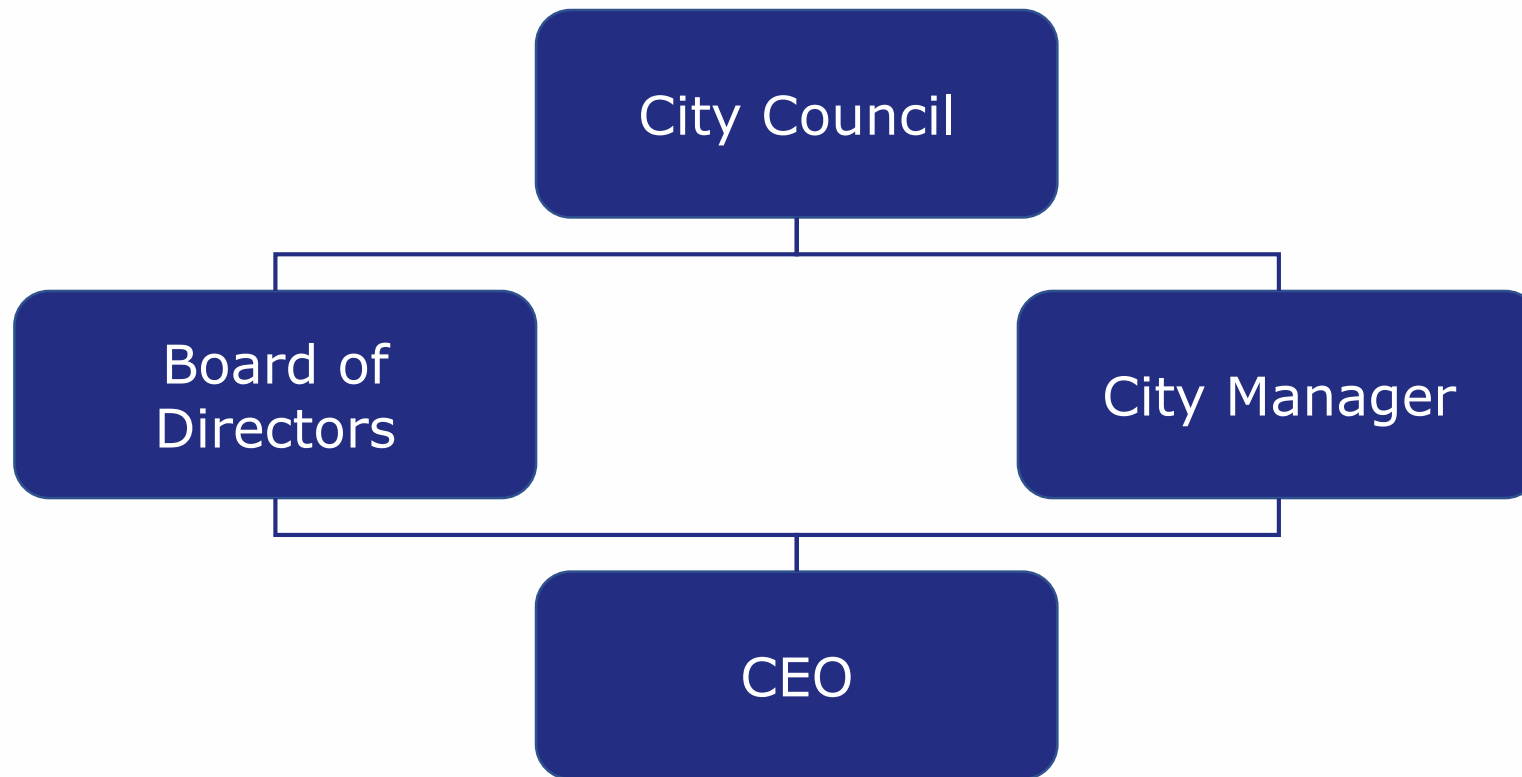
Pre-K 4 SA will develop a world-class workforce in one generation through high-quality early childhood education for all children in San Antonio.

PRE-K 4 SA MILESTONES





ORGANIZATIONAL STRUCTURE



BOARD OF DIRECTORS

District	Name	Title	Organization
Mayor's Appointee	Elaine Mendoza	CEO	Conceptual Mindworks, Inc.
City Council District 1	Dr. Richard Middleton	Advisory Board Member	PowerSchool Group, LLC.
City Council District 2	Brandon Logan	CEO	Urban Capital Partners
City Council District 3	General Josue Robles	CEO Emeritus	USAA
City Council District 4	Richard Perez	President and CEO	The Greater San Antonio Chamber of Commerce
City Council District 5	Gloria Ramirez	Retired Educator	N/A
City Council District 6	Dr. Tracy Hurley	Dean, College of Business	Texas A&M University-San Antonio
City Council District 7	Frances Guzman	Retired Educator	N/A
City Council District 8	Dr. Shari Albright	President	Raise Your Hand Texas
City Council District 9	Dr. Gogi Dickson	Retired Educator	N/A
City Council District 10	Jenni Roolf Laster	Brand Manager	Whataburger

Big Promise #1

Develop a best in class, global education for young children to become responsible stewards of their own environment.



Big Promise #2

Develop Pre-K
4 SA as the
national leader
in early learning
resources,
research, and
training.

Big Promise #3

Contribute to San Antonio's economic development by laying a strong foundation of literacy, numeracy, and social-emotional development to build a sustainable, educated workforce.



Big Promise #4

Catalyze the community to focus on the power and promises of early learning and its potential to elevate family prosperity.



Big Promise #5

Fulfill the fiduciary responsibility set forth in the election and maximize its impact on the improvement of early learning citywide.



PROGRAM COMPONENTS

Education Centers

Family Engagement & Outreach

Professional Learning

Competitive Grants



Education Centers

100
Classrooms

2,000
Children

4
Curriculum
Innovations

Over 900
Visitors

INNOVATION: OUTDOOR LEARNING

- Creating a sense of wonder and awe about the natural world
- Instilling a habit of movement and fitness
- Learning to sustain natural resources



INNOVATION: GARDEN TO TABLE

- Developing healthy eating habits in children and families
- Connecting food to wellness
- Learning to make small changes that have a big impact



INNOVATION: CIVIC ENGAGEMENT

- Instilling a love and appreciation for San Antonio
- Learning the benefits of giving back to the community
- Voicing your perspective
- Taking action to improve our community



INNOVATION: ARTS INFUSION

- Learning challenging content through performance and visual arts
- Understanding art as way to express ideas
- Tapping into creativity to support brain development



INNOVATIONS IN PROGRESS

- Social-emotional learning
- Aeronautical science
- Coding and robotics



Professional Learning

12,859
Hours

15
Specialists

1,269
Educators

120
CDAs

PROFESSIONAL LEARNING: WHAT WE OFFER

- Minds-on, hands-on workshops
- Seminars with education experts
- Job-embedded coaching
- Credentialing





PROFESSIONAL LEARNING FOR DISTRICTS

District	Training Hours	Unique Participants	Campuses
East Central	891	37	7
Edgewood	3,072	233	12
Harlandale	848	64	12
North East	2,486	309	42
Northside	2,620	272	77
San Antonio	305	34	23
Southside	44	9	4
Southwest	2,593	311	11
Total	12,859	1,269	188

PROFESSIONAL LEARNING FOR CHILD DEVELOPMENT CENTERS



513 licensed child development centers in San Antonio

89%

uncertified/unaccredited for quality

PROFESSIONAL LEARNING FOR CHILD DEVELOPMENT CENTERS

1-2 Years

6 months

Pre-K 4 SA helps
CDC meet
licensing
requirements



CDC submits
letter of intent to
become certified;
mentor assigned



CDC evaluated for
certification

Pre-K 4 SA

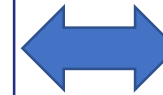
Texas Workforce Alamo

Pre-K 4 SA Coaches

- Provide training and coaching
- Quality needs assessment
- CDA certification

C2 Global Mentors

- Provide mentoring and support (6 months from application submission)



DHS Assessors

- Assessing potential centers for quality
- Implement TWC/TRS guidance
- Provide feedback to Centers

Child Development Associate (CDA) Certification for Head Start Parents

- Stafford Elementary School, Edgewood
- 16 participants



Family Engagement

4,487

Family Member
Engagements

1,971

Conferences &
Home visits

48

Puentes
Participants

550

Parents as Partners
Participants



PARENTS AS PARTNERS / FAMILIAS UNIDAS

- Strengths-based approach
- Based on parent interests and needs
- Parents learning and taking action together
- School personnel as a support and resource provider

Standing Committees:

1. Ambassadorship
2. Home-School Partnerships
3. Gardening & Outdoor Learning
4. Family Fit



PUENTES AL FUTURO

- Curriculum designed with Spanish-dominant families in mind
- Teaches parents about navigating the U.S. education system and supporting children's learning at home
- Pre-K 4 SA developed the delivery model
- 48 parents in first cohort



Competitive Grants

\$4.2
million

6,554
Students

700
Full-day
seats

2,080
Extended
Day seats



GRANT RECIPIENTS 2018-19

Agency	Category	Award
North East ISD	Public	\$ 801,000
Northside ISD	Public	\$ 771,827
San Antonio ISD	Public	\$ 558,000
Harlandale ISD	Public	\$ 250,000
Edgewood ISD	Public	\$ 250,000
East Central ISD	Public	\$ 300,077
Southwest ISD	Public	\$ 300,325
Archdiocese: Hope for the Future	Private	\$ 268,067
St. Mary Magdalen	Private	\$ 122,000
Jubilee Academies	Charter	\$ 48,659
Islamic Academy of San Antonio	Private	\$ 31,571

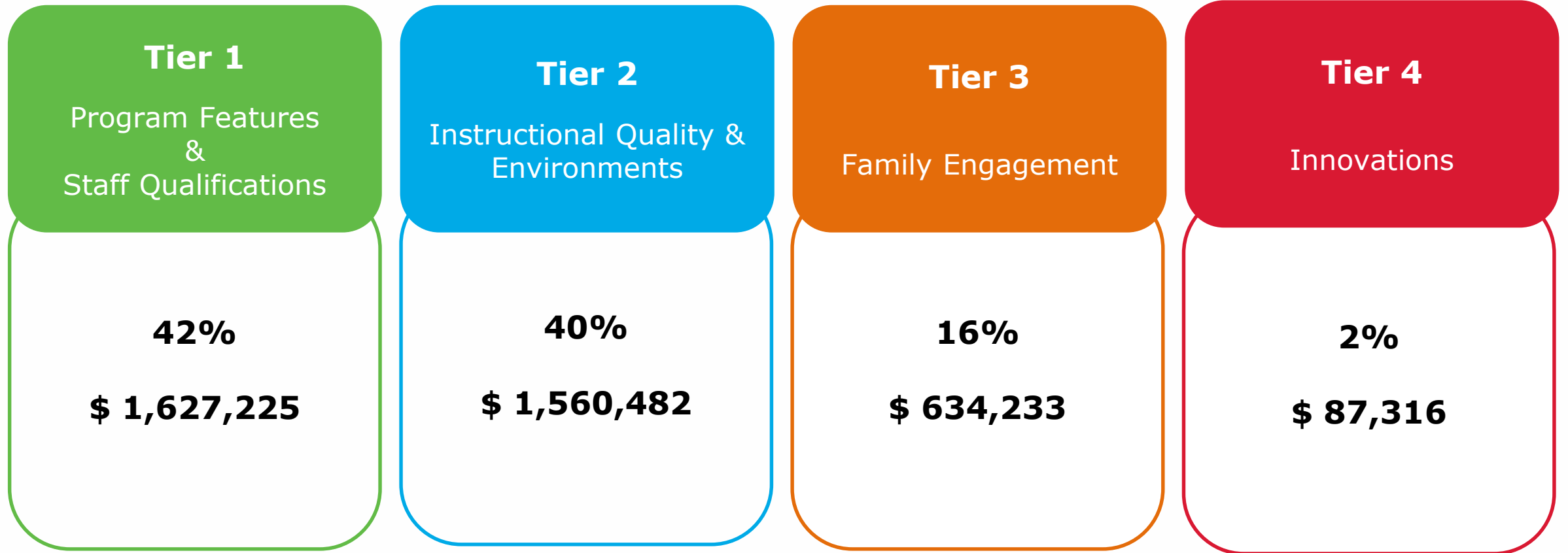
High Quality Impact Pyramid

- Communicates how Pre-K 4 SA prioritizes grants dollars
- Ensures every dollar is funding a quality initiative



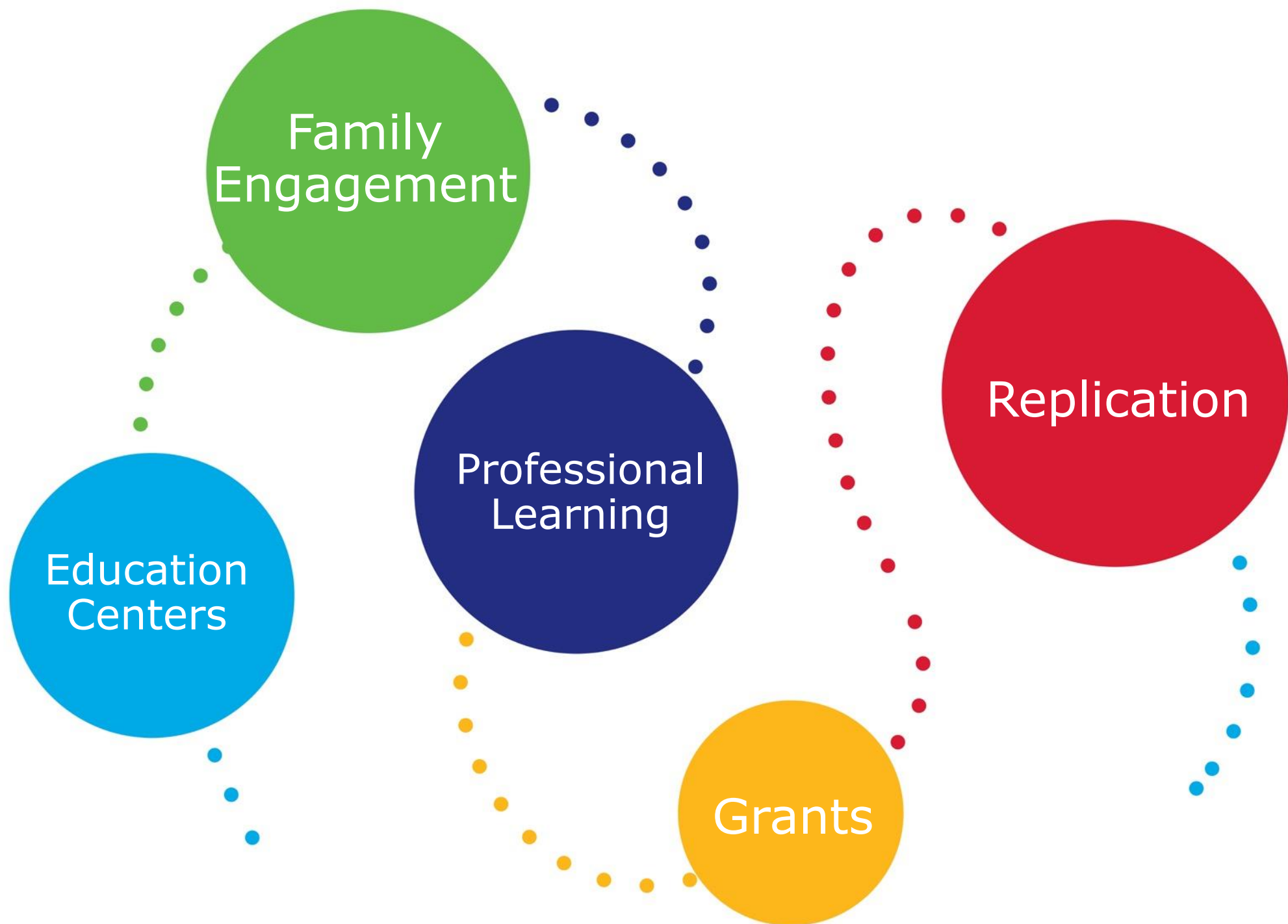


FUNDING DISTRIBUTION



PROMOTING QUALITY

NIEER Quality Standards	Texas	ECISD	EISD	HISD	NEISD	NISD	SAISD	SWISD	Private, Charter, Parochial	CDC
1. Early Learning Standards	✓									
2. Lead Teacher Degree	✓									
3. Specialized Trainings	✓									
4. Health Screenings	✓									
5. Support for Curriculum Implementation		✓				✓	✓		✓	✓
6. Assistant Teacher Degree		✓	✓	✓	✓				✓	✓
7. Annual Professional Development		✓	✓	✓	✓			✓	✓	✓
8. Maximum Class Size		✓	✓	✓	✓	✓	✓	✓	✓	✓
9. Staff-Child Ratio		✓	✓	✓	✓	✓	✓	✓	✓	
10. CQI									✓	✓ ₃₁



GARDENDALE PRE-K 4 SA EARLY LEARNING PROGRAM

- Model Pre-K – 2nd campus
- Capacity building approach
- Leveraging funding and support through SB 1882



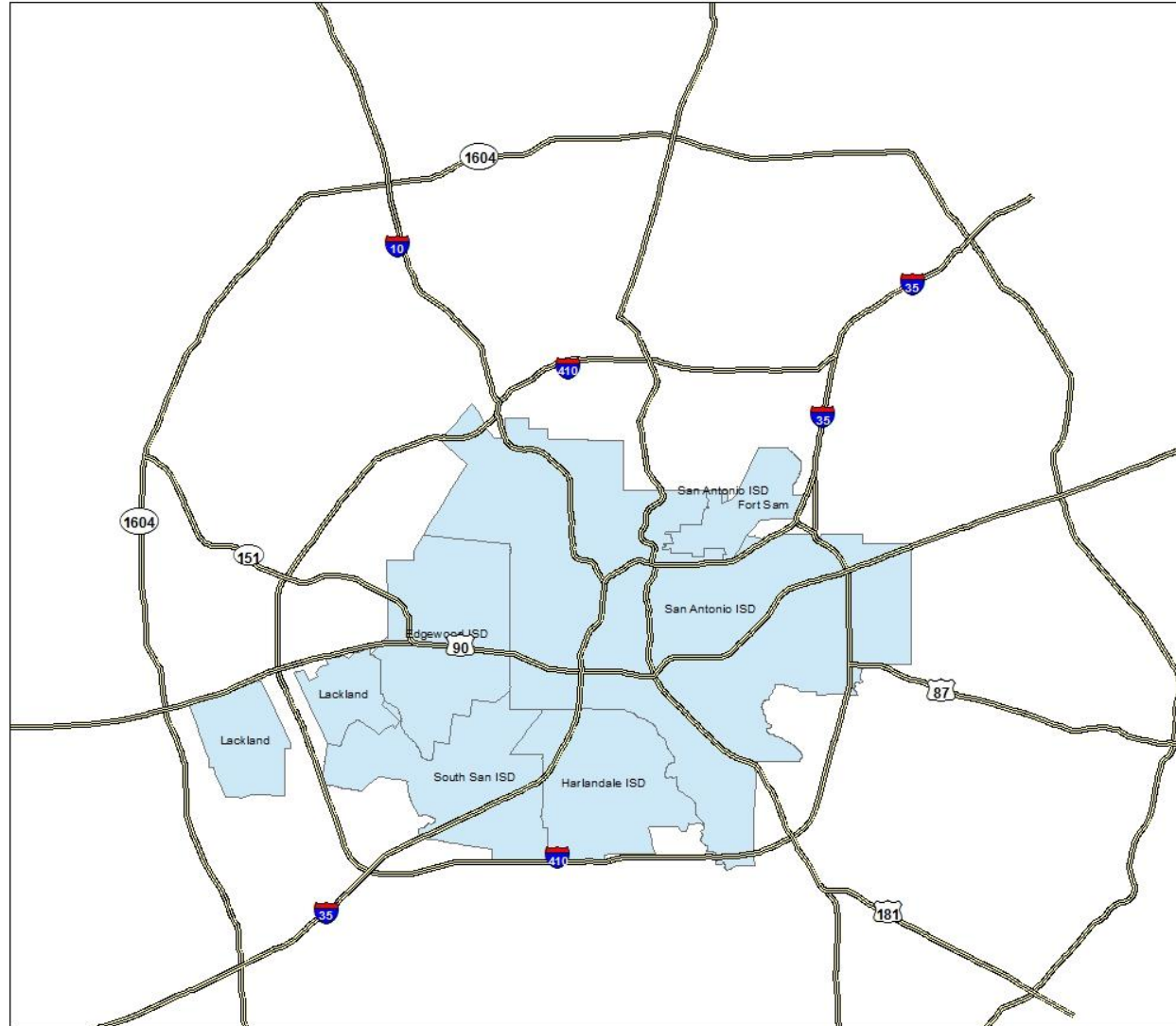
Results

UTSA Urban Education Institute Initial Impact Study of Pre-K 4 SA

\$23.2
million for
better
attendance

9.07%
Pre-K
Enrollment
Increase

FULL-DAY PRE-K, 2013



FULL-DAY PRE-K, 2019

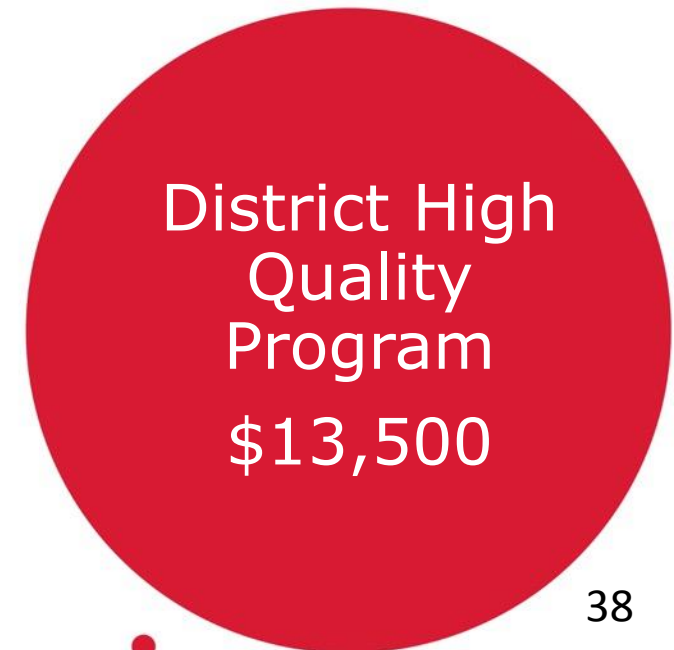


INITIAL IMPACT STUDY BY UTSA

- Students who attended a Pre-K 4 SA Education Center had:
- **Better attendance**, resulting in 7 weeks more instruction.
- **Better 3rd grade math scores**, exceeding the state average score by 16.9 percentage points.
- **Better 3rd grade reading scores**, increasing the share of economically disadvantaged students who met or exceeded the state average score by 12.3 percentage points.

Board
Adopted
FY 2020
Budget

Cost per Student





BUDGET ASSUMPTIONS



Education Centers

- We serve 2,000 students in the Education Centers.
- Our instructional program is of the highest quality.
- We provide transportation and a nutritious meal program for students at no cost to families.
- We provide an Extended Day program for qualifying families until 6:00 p.m.
- We will serve as an incubator for innovation in early childhood education.

BUDGET ASSUMPTIONS



Family Engagement

- We have a model family engagement program in our four Education Centers.
- We support families in being advocates for their children's education.

Professional Learning

- We provide high quality professional learning to improve Pre-K – 3 education throughout San Antonio.
- We serve teachers, assistant teachers, and leaders.
- We serve early learning educators for birth through 8-years-old.

BUDGET ASSUMPTIONS



Competitive Grants

- We support high quality early childhood education through competitive grant awards.
- We provide grants for public, private, charter schools, and child development centers.

Spreading Quality

- We measure the effects of the Pre-K 4 SA initiative.
- We are helping to build capacity at Gardendale Elementary as made possible by SB 1882 funding which the Board will have an opportunity to review later this year.

8-YEAR PROGRAM FINANCIAL FORECAST

IN MILLIONS

	Actual					Projected		
	FY 14	FY 15	FY 16	FY 17	FY 18	FY 19	FY 20	FY 21
Beginning Balance	\$6.5	\$17.6	\$19.6	\$19.9	\$13.8	\$8.7	\$5.3	\$2.3
Revenues	32.6	37.0	38.5	40.2	42.0	43.3	44.6	37.8*
Expenditures	<u>21.5</u>	<u>35.0</u>	<u>38.2</u>	<u>46.3</u>	<u>47.1</u>	<u>46.7</u>	<u>47.6</u>	<u>40.0</u>
Ending Balance	\$17.6	\$19.6	\$19.9	\$13.8	\$8.7	\$5.3	\$2.3	\$0.1

*FY 2021 contains 9 months of sales tax revenue

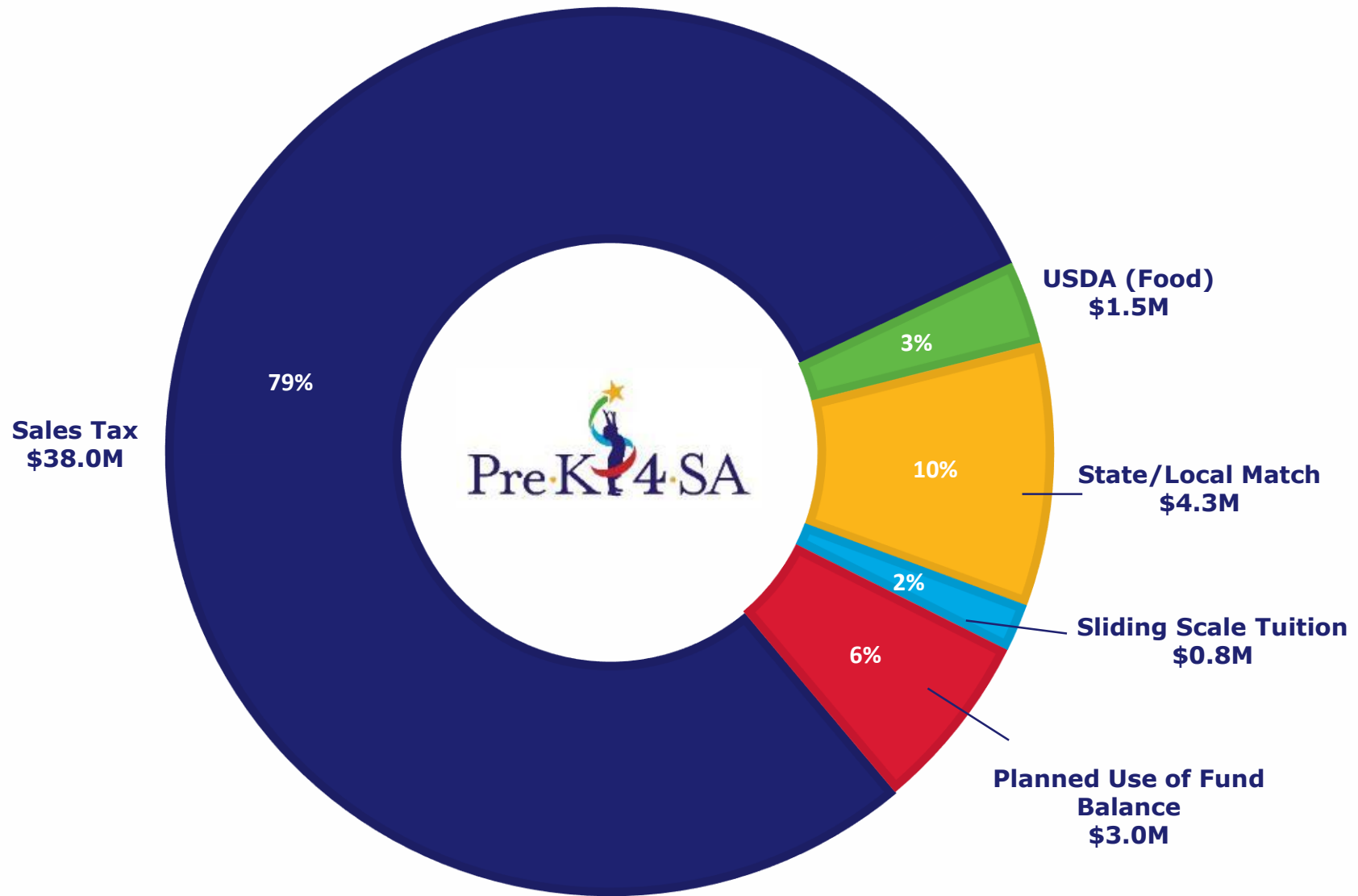
BUDGET PROCESS



- Board of Directors Budget Work Session: March 19, 2019
- Board of Directors Request for Approval: April 9, 2019
- City Council “B” Session: April 17, 2019
- City Council “A” Session: May 2, 2019

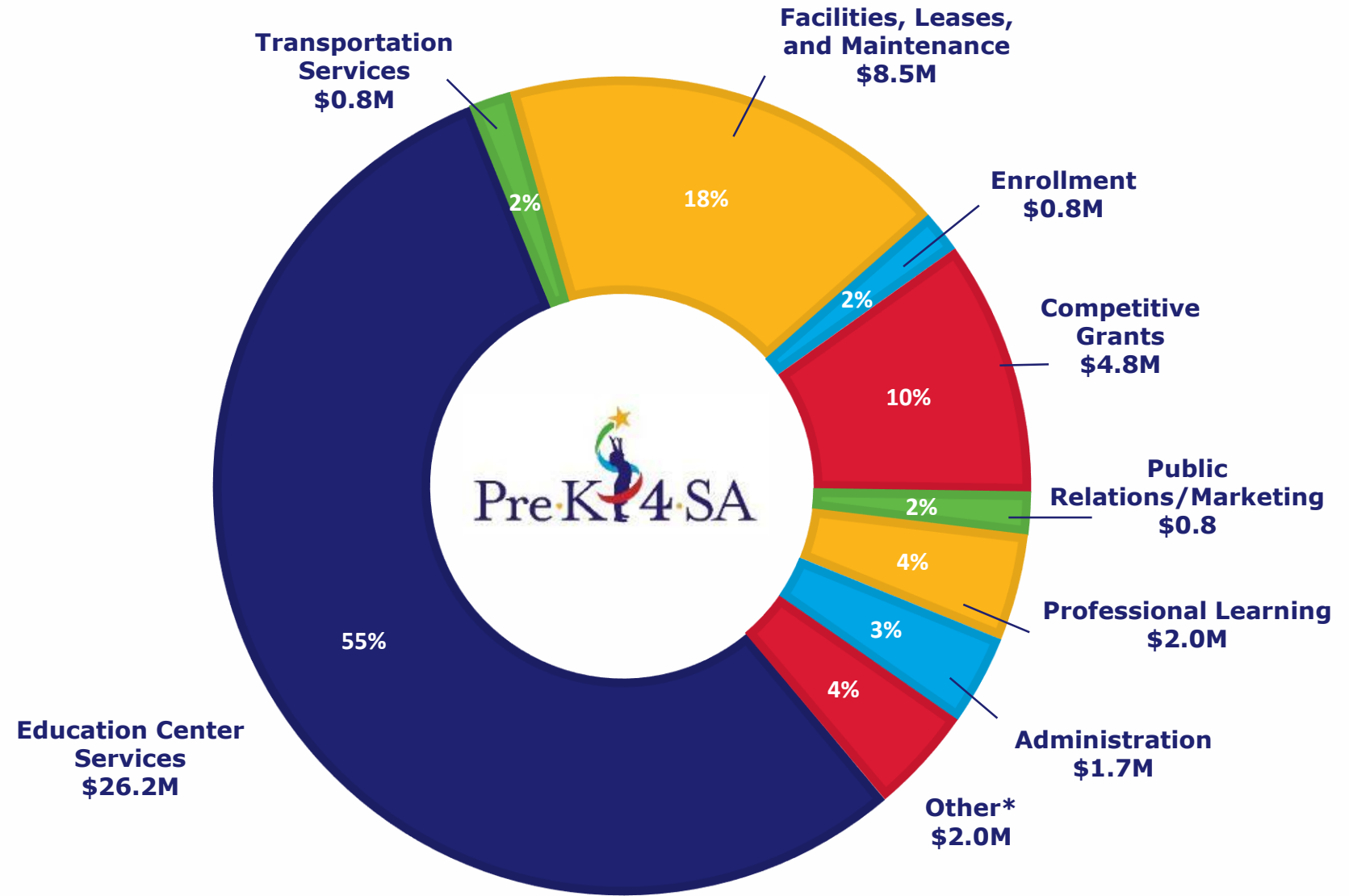
FY 2020

REVENUES:
\$47.6
MILLION



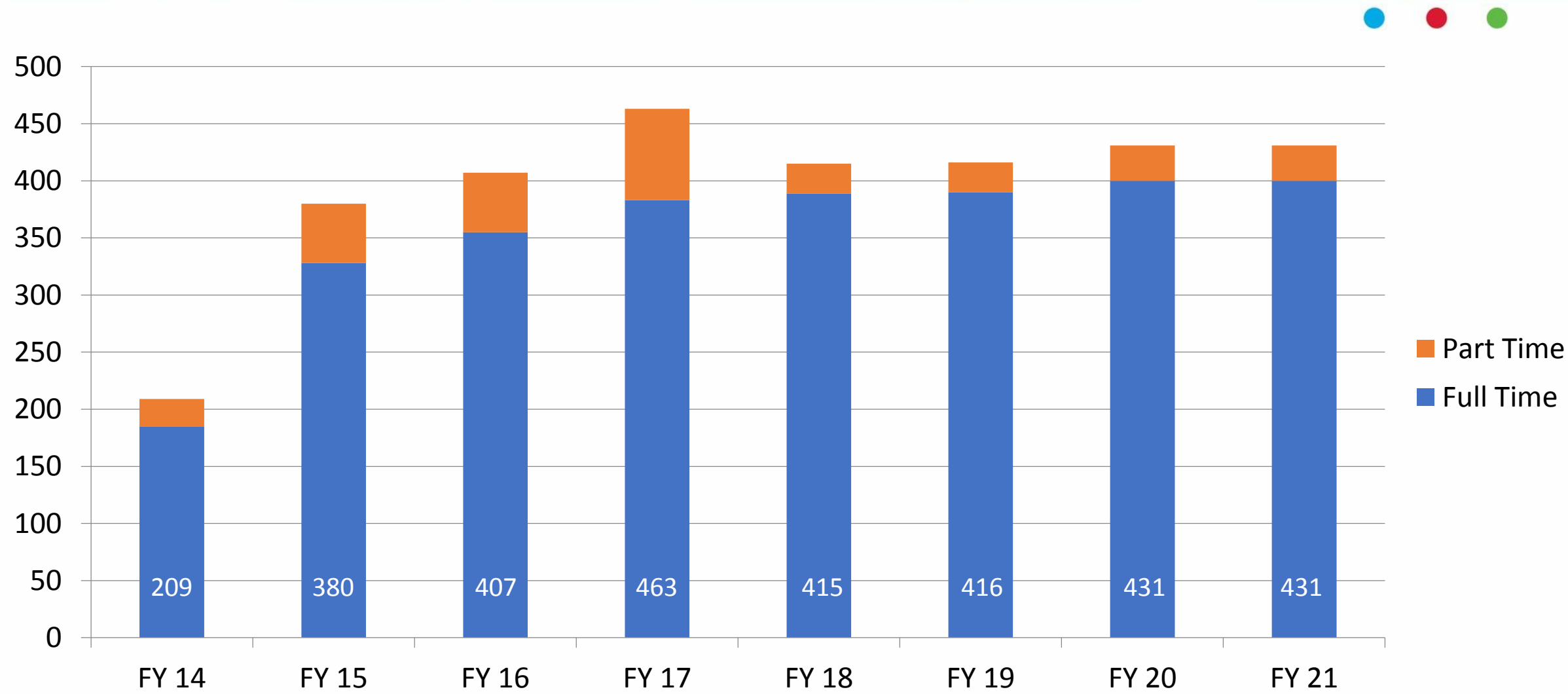
FY 2020

EXPENDITURES:
\$47.6 MILLION



FY 2020 PROPOSED PERSONNEL COMPLEMENT

TOTAL POSITION BY FISCAL YEAR



QUESTIONS?

