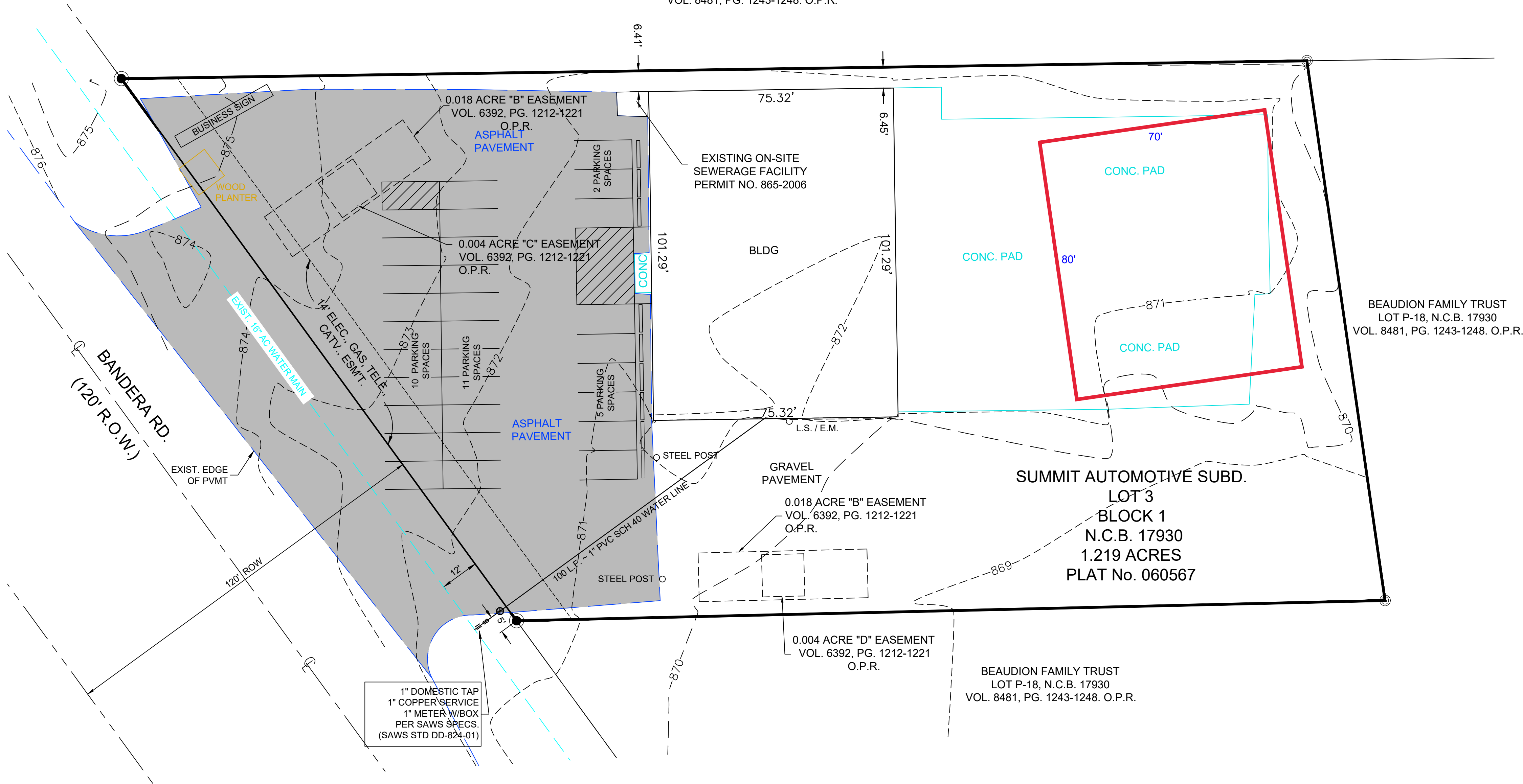


LOCATION MAP
NOT TO SCALE

CITY OF SAN ANTONIO
LOT P-11, N.C.B. 17930
VOL. 8481, PG. 1243-1248, O.P.R.



GENERAL NOTES:

- EXISTING ABOVE GROUND UTILITIES HAVE BEEN SHOWN BASED ON DIRECT FIELD INVESTIGATION. UNDERGROUND UTILITIES HAVE BEEN COMPILED FROM RECORD DRAWINGS PROVIDED BY THE UTILITY AND REQUIRE VERIFICATION BY THE CONTRACTOR TO ESTABLISH THEIR EXACT LOCATION AND DEPTH PRIOR TO THE START OF CONSTRUCTION. CONTRACTOR SHALL BE RESPONSIBLE FOR DAMAGE TO ALL EXISTING ABOVE GROUND OR UNDERGROUND UTILITIES, INCLUDING THOSE NOT SHOWN ON PLANS. DEAD UTILITY LINES SHALL BE SUITABLY CAPPED.
- WHERE CONSTRUCTION IS IN THE PROXIMITY OF AN EXISTING UTILITY, THE CONTRACTOR WILL TAKE PRECAUTIONS TO PROTECT AND/OR SUPPORT THE UTILITY AND ANY DAMAGE THAT MIGHT OCCUR SHALL BE REPAIRED IMMEDIATELY.
- ANY EXISTING IMPROVEMENT OR UTILITY REMOVED, DAMAGED OR UNDERCUT BY CONTRACTOR'S OPERATIONS SHALL BE REPAIRED OR REPLACED AS DIRECTED BY THE ENGINEER AND APPROVED BY THE RESPECTIVE UTILITY AT THE CONTRACTOR'S EXPENSE.
- TRENCH EXCAVATION PROTECTION: CONTRACTOR AND/OR CONTRACTORS INDEPENDENTLY RETAINED EMPLOYEE OR STRUCTURAL DESIGN/GEOTECHNICAL/SAFETY/EQUIPMENT CONSULTANT, IF ANY, SHALL REVIEW THESE PLANS AND ANY AVAILABLE GEOTECHNICAL INFORMATION AND THE ANTICIPATED INSTALLATION SITE(S) WITHIN THE PROJECT WORK AREA IN ORDER TO DEVELOP THE CONTRACTOR'S PLANS TO IMPLEMENT THE PROJECT DESCRIBED IN THE CONTRACT DOCUMENTS. THE CONTRACTORS PLANS SHALL PROVIDED FOR ADEQUATE TRENCH SAFETY EXCAVATIONS, SPECIFICALLY, CONTRACTOR AND/OR CONTRACTORS INDEPENDENTLY RETAINED EMPLOYEE OR SAFETY CONSULTANT SHALL DEVELOP AND IMPLEMENT A TRENCH SAFETY PROGRAM IN ACCORDANCE WITH OSHA STANDARDS GOVERNING THE PRESENCE AND ACTIVITIES OF INDIVIDUALS WORKING IN AND AROUND TRENCH EXCAVATION. THE CONTRACTOR'S PLANS AND OUTLINE FOR A TRENCH SAFETY PROGRAM SHALL BE FURNISHED BY THE CONTRACTOR TO THE OWNER. THE DOCUMENTS FURNISHED TO THE OWNER ARE NOT FOR THE OWNERS REVIEW, APPROVAL OR ENDORSEMENT OF THE CONTRACTOR'S PLANS AND TRENCH SAFETY PROGRAM.
- WHERE A SANITARY SEWER CROSSES A WATERLINE AND THE SEWER IS CONSTRUCTED OF CAST IRON, DUCTILE IRON, OR PVC WITH A MINIMUM PRESSURE RATING OF 150 PSI, AN ABSOLUTE MINIMUM DISTANCE OF SIX INCHES BETWEEN OUTSIDE DIAMETERS SHALL BE MAINTAINED. IN ADDITION, THE SEWER SHALL BE LOCATED BELOW THE WATERLINE WHERE POSSIBLE AND ONE LENGTH OF THE SEWER PIPE MUST BE CENTERED ON THE WATERLINE.
- WHERE A SEWER CROSSES OVER A WATERLINE, ALL PORTIONS OF THE SEWER WITHIN NINE FEET OF THE WATERLINE SHALL BE CONSTRUCTED OF CAST IRON, DUCTILE IRON, OR PVC PIPE WITH A PRESSURE RATING OF AT LEAST 150 PSI USING APPROPRIATE ADAPTERS.
- DUE TO FEDERAL REGULATIONS TITLE 49, PART 192.181, CPS MUST MAINTAIN ACCESS TO GAS VALVES AT ALL TIMES. THE CONTRACTOR MUST PROTECT AND WORK AROUND ANY GAS VALVES THAT ARE IN THE PROJECT AREA.
- THE EXISTENCE AND LOCATION OF UNDERGROUND CABLE INDICATED ON THE PLANS ARE TAKEN FROM THE BEST RECORDS AVAILABLE AND ARE NOT GUARANTEED TO BE ACCURATE. CONTRACTOR TO CONTACT THE TELEPHONE COMPANY CABLE LOCATOR 48 HOURS PRIOR TO EXCAVATION ON 1-800-828-5127. CONTRACTOR TO PROTECT AND SUPPORT TELEPHONE COMPANY PLANT DURING CONSTRUCTION.
- FOR MATERIALS, CONSTRUCTION SPECIFICATIONS, AND CONSTRUCTION DETAILS, SEE THE "SAWS STANDARD SPECIFICATIONS FOR CONSTRUCTION".
- DOMESTIC SERVICE SIZE IS SUBJECT TO CHANGE. SEE ARCHITECTURAL PLANS TO VERIFY CORRECT SIZE.
- CONTRACTOR TO INSTALL PROPER TRAFFIC CONTROL MEASURES AND TO NOTIFY TXDOT WHEN INSTALLING NEW WATER SERVICES TO EXISTING WATER MAIN IN BANDERA ROAD. PAYMENT FOR TRAFFIC CONTROL TO BE INCLUDED IN PAY ITEM FOR WATER SERVICE INSTALLATION. TRAFFIC CONTROL WILL NOT BE A SEPERATE PAY ITEM.

OSHA TRENCH SAFETY:

- TRENCH EXCAVATION SHALL COMPLY WITH MINIMUM STANDARDS AS SET FORTH BY THE OCCUPATIONAL SAFETY AND HEALTH ADMINISTRATION, REGULATIONS STANDARDS - 29 CFR - "SLOPING AND BENCHING" - 1926 SUBPART P APP B.
- TRENCH SAFETY SHALL BE THE RESPONSIBILITY OF THE CONTRACTOR. IT SHALL BE THE CONTRACTOR'S RESPONSIBILITY TO PROVIDE SHOP DRAWINGS FOR DETAIL PLANS AND SPECIFICATIONS TO PROVIDE ADEQUATE SHORING AND SHEETING STANDARDS THAT MEET THE OSHA STANDARDS AS SET OUT BY (STANDARDS - 29 CFR - "SLOPING AND BENCHING" - 1926 SUBPART P APP B. FOR TRENCH SAFETY, COST OF TRENCH SAFETY SHALL BE INCLUDED IN THE UNIT PRICE COST PER LINEAR FOOT OF PIPE AS BID.
- CONTINUOUS INSPECTION OF ALL TRENCH EXCAVATION SHALL BE THE RESPONSIBILITY OF THE CONTRACTOR JOB SUPERINTENDENT. THE CONTRACTOR CONTROLS THE SIZE, WEIGHT, AND SPEED OF OPERATION OF EQUIPMENT AND PIPE INSTALLATION, WHICH DIRECTLY AFFECTS ALL SAFETY MEASURES IN A TRENCH. IF PROBABLE CAUSE OF UNSAFE TRENCH CONDITIONS EXIST, ALL WORK SHALL CEASE IMMEDIATELY UNTIL NECESSARY PRECAUTIONS TO SAFEGUARD EMPLOYEES ARE TAKEN.

LEGAL DESCRIPTION
SUMMIT AUTOMOTIVE SUBD.

LOT 3
BLOCK 1
N.C.B. 17930
1.219 ACRES
PLAT No. 060567

SUMMIT AUTOMOTIVE
SAN ANTONIO, TEXAS

UTILITY PLAN

PROJECT NO. 2227.00

DECEMBER 6, 2006

SHEET 1 OF 1



REVISIONS :

NO. DATE

1. -

2. -

3. -

4. -

5. -

6. -

7. -

8. -

9. -

10. -

11. -

12. -

13. -

14. -

15. -

16. -

17. -

18. -

19. -

20. -

21. -

22. -

23. -

24. -

25. -

26. -

27. -

28. -

29. -

30. -

31. -

32. -

33. -

34. -

35. -

36. -

37. -

38. -

39. -

40. -

41. -

42. -

43. -

44. -

45. -

46. -

47. -

48. -

49. -

50. -

51. -

52. -

53. -

54. -

55. -

56. -

57. -

58. -

59. -

60. -

61. -

62. -

63. -

64. -

65. -

66. -

67. -

68. -

69. -

70. -

71. -

72. -

73. -

74. -

75. -

76. -

77. -

78. -

79. -

80. -

81. -

82. -

83. -

84. -

85. -

86. -

87. -

88. -

89. -

90. -

91. -

92. -

93. -

94. -

95. -

96. -

97. -

98. -

99. -

100. -

101. -

102. -

103. -

104. -

105. -

106. -

107. -

108. -

109. -

110. -

111. -

112. -

113. -

114. -

115. -

116. -

117. -

118. -

119. -

120. -

121. -

122. -

123. -

124. -

125. -

126. -

127. -

128. -

129. -

130. -

131. -

132. -

133. -

134. -

135. -

136. -

137. -

138. -

139. -

140. -

141. -

142. -

143. -

144. -

145. -

146. -

147. -

148. -

149. -

150. -

151. -

152. -

153. -

154. -

155. -

156. -

157. -

158. -

159. -

160. -

161. -

162. -

163. -

164. -

165. -

166. -

167. -

168. -

169. -

170. -

171. -

172. -

173. -

174. -

175. -

176. -

177. -

178. -

179. -

180. -

181. -

182. -

183. -

184. -

185. -

186. -

187. -

188. -

189. -

190. -

191. -

192. -

193. -

194. -

195. -

196. -

197. -

198. -

199. -

200. -

201. -

202. -

203. -

204. -

205. -

206. -

207. -

208. -

209. -

210. -

211. -

212. -

213. -

214. -

215. -

216. -

217. -

218. -

219. -

220. -

221. -

222. -

223. -

224. -

225. -

226. -

227. -

228. -

229. -

230. -

231. -

232. -

233. -

234. -

235. -

236. -

237. -

238. -

239. -

240. -

241. -

242. -

243. -

244. -

245. -

246. -

247. -

248. -

249. -

250. -

251. -

252. -

253. -

254. -

255. -

256. -

257. -

258. -

259. -

260. -

261. -

262. -

263. -

264. -

265. -

266. -

267. -

268. -

269. -

270. -</