

RESOLUTION # _____

A RESOLUTION APPROVING A CONVEYANCE OF APPROXIMATELY 2.00 ACRES OR AN 87,120 SQUARE FOOT TRACT OF CITY-OWNED LAND OUT OF LOT 24, NCB 602 LOCATED AT 223 S. CHERRY IN EXCHANGE FOR TWO 803 N. Cherry, LLC.-OWNED TRACTS OF LAND OUT OF NCB 527, BLOCK 1, LOT 1 AND LOT 2, TOTALING APPROXIMATELY 1.69 ACRES OR 73,616 SQUARE FEET LOCATED AT 803 & 815 NORTH CHERRY, RESPECTIVELY, AS SHOWN IN ATTACHMENT A, TO FACILITATE AN EXCHANGE OF PROPERTY IN COUNCIL DISTRICT 2.

* * * * *

WHEREAS, the City Charter has empowered the Planning Commission to approve certain transactions as consistent with the Master Plan; and

WHEREAS, the City Code further subjects approval of land use to public hearing and approval by act of City Council; and

WHEREAS, the City of San Antonio's Center City Development and Operations Department and Loopy Limited have requested a Resolution recommending approximately 2.00 acres or an 87,120 square foot tract of City-owned land out of lot 24, NCB 602 located at 223 S. Cherry in exchange for two 803 N. Cherry, LLC.-owned tracts of land out of NCB 527, Block 1, Lot 1 and Lot 2, totaling approximately 1.69 acres or 73,616 square feet located at 803 & 815 north cherry, respectively, adjacent to the hays street bridge, as shown in **Attachment A**, to facilitate an exchange of property in Council District 2; and

WHEREAS, after careful consideration and deliberation, the Planning Commission has elected to support the application and recommend its hearing and approval by City Council;

BE IT RESOLVED BY THE PLANNING COMMISSION OF THE CITY OF SAN ANTONIO:

SECTION 1. The Planning Commission approves the aforementioned as consistent with the Master Plan and elects to recommend hearing and approval by City Council.

SIGNED this 12nd day of June, 2019

Christopher Garcia, Chairman
San Antonio Planning Commission

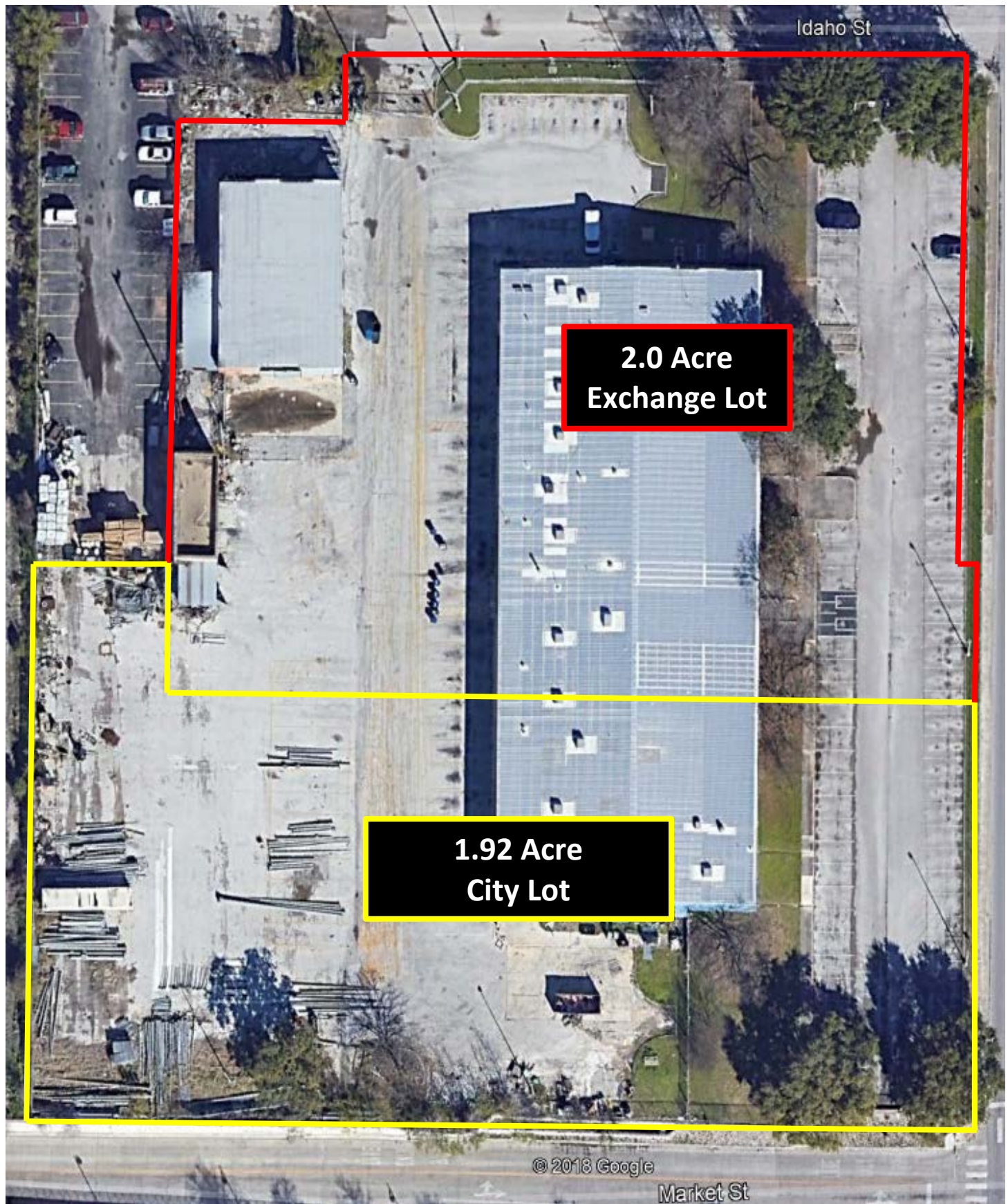
Attest:

Executive Secretary
San Antonio Planning Commission

Attachment A

Property Exchange Description

2.00 Acre Exchange Lot 223 S. Cherry St



1.69 Acre Exchange Lot 803/815 N. Cherry St

