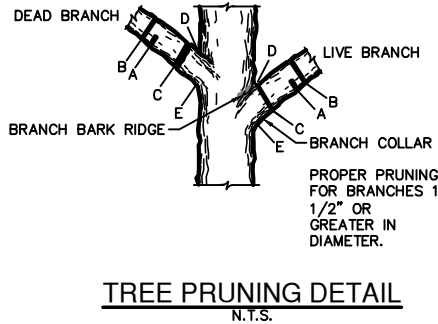


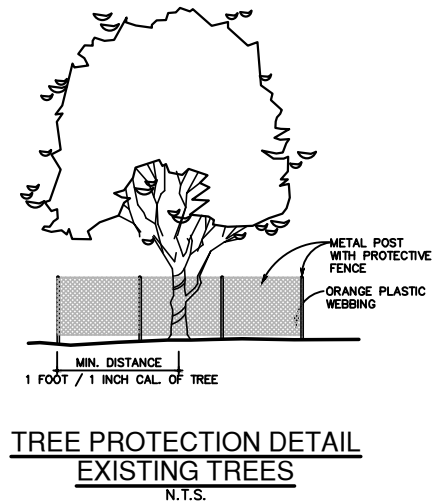
GENERAL NOTES

1. ALL THE TREES WITH A DIAMETER GREATER THAN 3 INCHES AFFECTED BY CONSTRUCTION SHALL HAVE THE LIMBS AND ROOTS TRIMMED AND PRUNED ACCORDING TO ITEM No. 802. TREE PRUNING, SOIL AMENDING AND FERTILIZATION, UNLESS SPECIFIED TREES SHALL RECEIVE LEVEL 2 PROTECTION AS PER ITEM No. 802. TREES TO RECEIVE LEVEL 1 PROTECTION AS PER ITEM No. 802 ARE SHOWN ON TREE PROTECTION TABLE ON THIS SHEET.
2. ALL TREES SHALL REMAIN UNLESS NOTED ON THE PLANS.
3. NO SITE PREPARATION WORK SHALL BEGIN IN AREAS WHERE TREE PRESERVATION AND TREATMENT MEASURES HAVE NOT BEEN COMPLETED AND APPROVED.
4. TREE PROTECTION FENCING SHALL BE REQUIRED. TREE PROTECTION FENCING SHALL BE INSTALLED, MAINTAINED AND REPAIRED BY THE CONTRACTOR DURING SITE CONSTRUCTION.
5. THE CONTRACTOR SHALL AVOID CUTTING ROOTS LARGER THAN THREE INCHES IN DIAMETER WHEN EXCAVATING NEAR EXISTING TREES. EXCAVATION IN THE VICINITY OF TREES SHALL PROCEED WITH CAUTION. THE CONTRACTOR SHALL CONTACT THE CITY INSPECTOR.
6. THE ROOT PROTECTION ZONE IS THAT AREA SURROUNDING A TREE, AS MEASURED BY A RADIUS FROM THE TREE TRUNK, IN WHICH NO EQUIPMENT, VEHICLES OR MATERIALS MAY OPERATE OR BE STORED. THE REQUIRED RADIUS LENGTH IS 1 FOOT PER DIAMETER INCH OF THE TREE. FOR EXAMPLE, A 10-INCH DIAMETER TREE WOULD HAVE A 5-FOOT RADIUS ROOT PROTECTION ZONE AROUND THE TREE. ROOTS OR BRANCHES THAT ARE IN CONFLICT WITH THE CONSTRUCTION SHALL BE CUT CLEANLY ACCORDING TO PROPER PRUNING METHODS. LIVE OAK WOUNDS SHALL BE PAINTED OVER, WITHIN 20 MINUTES TO PREVENT OAK WILT.
7. ACCESS TO FENCED AREAS WILL BE PERMITTED ONLY WITH THE APPROVAL OF THE ENGINEER OR CITY INSPECTOR.
8. GRADING, IF REQUIRED, SHALL BE LIMITED TO A 3 INCH CUT OR FILL WITHIN THE FENCED ROOT ZONE AREAS.
9. TREES, SHRUBS OR BUSHES TO BE CLEARED FROM PROTECTED ROOT ZONE AREAS SHALL BE REMOVED BY HAND AS DIRECTED BY THE PROJECT MANAGER OR CITY INSPECTOR.
10. TREES DAMAGED OR LOST DUE TO CONTRACTOR'S NEGLIGENCE DURING CONSTRUCTION SHALL BE MITIGATED TO THE ENGINEER'S SATISFACTION.
11. EXPOSED ROOTS SHALL BE COVERED AT THE END OF EACH DAY USING TECHNIQUES SUCH AS COVERING WITH SOIL, MULCH OR WET BURLAP.
12. ANY TREE REMOVAL SHALL BE APPROVED BY THE CITY ARBORIST PRIOR TO ITS REMOVAL.



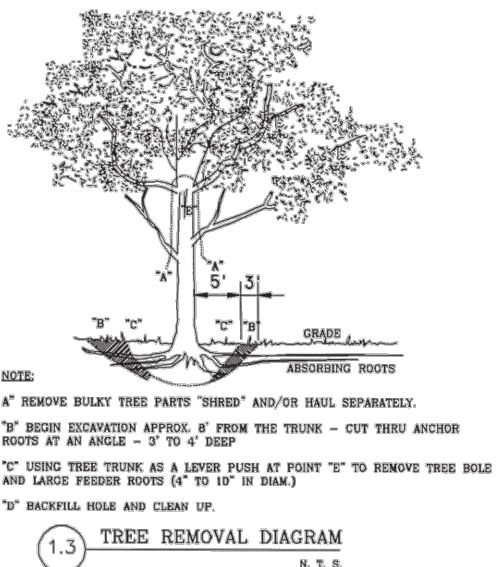
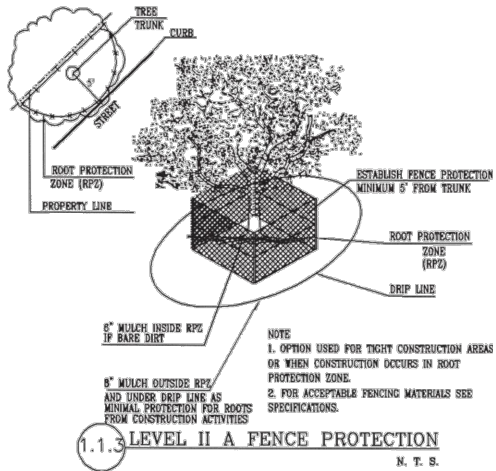
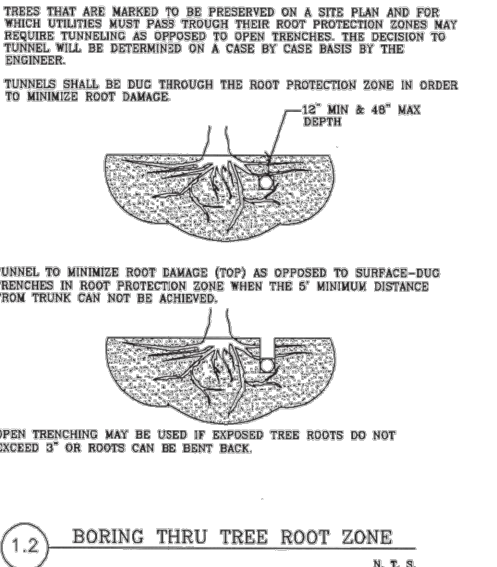
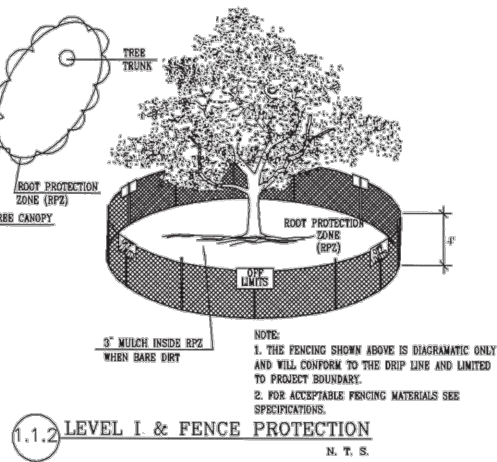
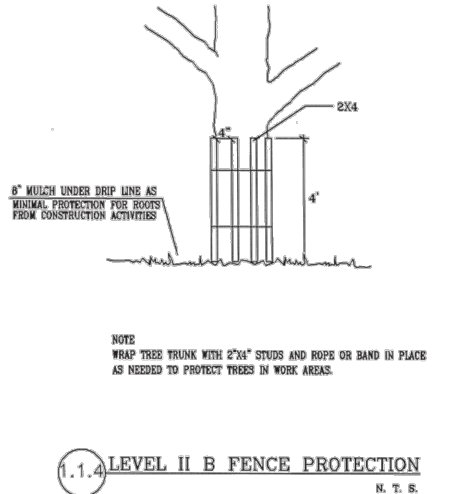
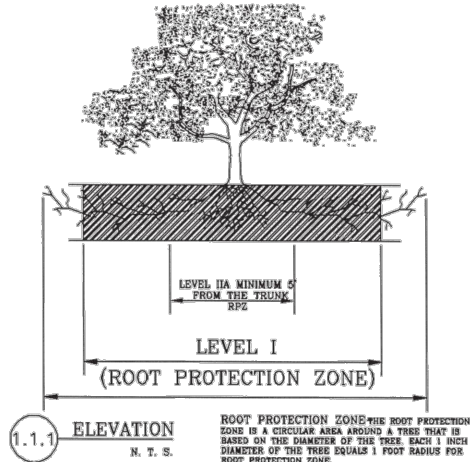
- NOTE: DO NOT CUT FROM D TO E
- A. **FIRST CUT** - TO PREVENT THE BARK FROM BEING PEELED WHEN THE BRANCH FALLS.
 - B. **SECOND CUT** - TO REDUCE THE WEIGHT OF BRANCH.
 - C. **FINAL CUT** - ALLOW FOR HEALING COLLAR BUT NO STUBS
 - D. **BRANCH RIDGES** - INDENT PROPERLY BRANCH RIDGES WHICH ARE SITE FOR DECAY.

FOR OAKS ONLY: PAINT ALL WOUNDS OR CUTS WITH PRUNING PAINT WITHIN 20 MIN. TO PREVENT THE SPREAD OF OAK WILT.



TREE PRESERVATION NOTES

1. ALL TREES TO REMAIN ON SITE REQUIRE PROTECTIVE FENCING, PRUNING, WATERING, AND FERTILIZATION AS DIRECTED BY A QUALIFIED ARBORIST.
2. PROTECTIVE FENCING CONSISTS OF 4'-0" HIGH FENCE.
3. FENCE TO EXTEND FROM TRUNK ONE FOOT FOR EVERY CALIPER INCH OF TREE (MINIMUM). THE OPTIMUM DISTANCE IS TO INSTALL FENCE DIRECTLY BENEATH DRIPLINE OF TREE TO REMAIN AS SHOWN.
4. DURING CONSTRUCTION, NO EXCESS SOIL, FILL MATERIAL, EQUIPMENT, LIQUIDS, OR CONSTRUCTION DEBRIS SHALL BE PLACED WITHIN THE PROTECTIVE FENCING, NOR SHALL ANY SOIL BE REMOVED FROM WITHIN THE FENCING.
5. ALL TREE PROTECTION MUST BE IN PLACE BEFORE CONSTRUCTION BEGINS.
6. INSTALL 4" MINIMUM DEPTH OF SHREDDED MULCH BENEATH THE DRIPLINE OF THE TREE.



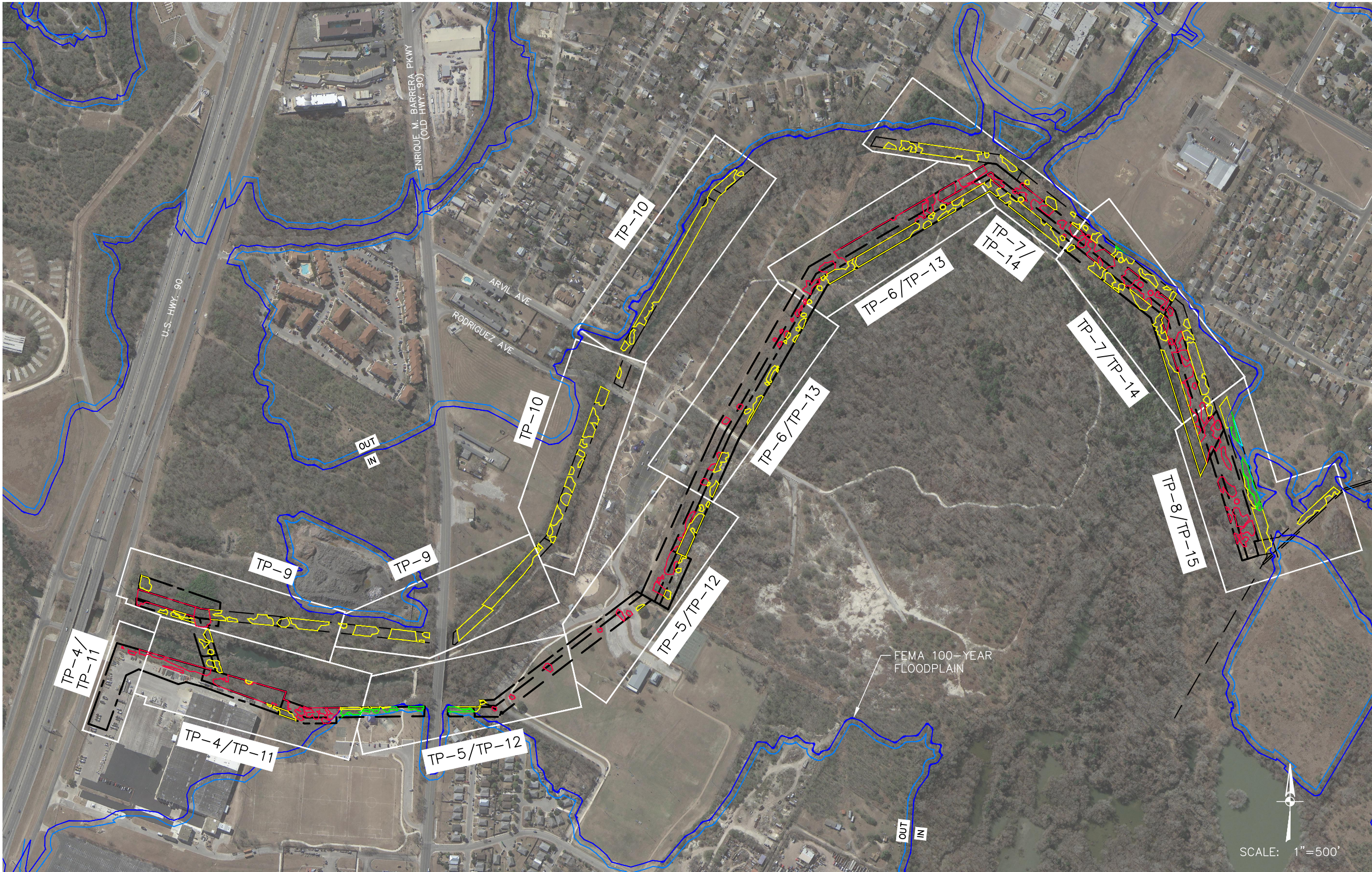
APP.	PAPE-DAWSON Job No. 8918-00
REVISIONS	NOT FOR CONSTRUCTION THIS DOCUMENT IS RELEASED FOR THE PURPOSE OF PRELIMINARY REVIEW UNDER THE AUTHORITY OF CARA C. TACKETT P.E. 89491 ON 1/31/2019.
NO.	DATE
1	JUNE 2019
DESIGNED BY:	MP
DRAWN BY:	MA
CHECKED BY:	JO
SCALE:	

PAPE-DAWSON ENGINEERS

3401 ATWOOD - JARVIS I. HOUSTON LIBERTY NORTH 1 MILE S. AND THE LOOP-230 I-55 AT JARVIS, TX 77030-1200
TREE PRESERVATION (APP. 1) TREE PRESERVATION (APP. 1)

SAN ANTONIO WATER SYSTEM

SAWS JOB NO. 15-4508
W-1 LEON CREEK: HWY 151 TO HWY 90
LOWER SEGMENT
TREE STAND DELINEATION PLAN



NO.		DATE	REVISIONS	APP.

PAPE-DAWSON
Job No.
8918-00

NOT FOR
CONSTRUCTION

THIS DOCUMENT IS
RELEASED FOR
THE PURPOSE OF
PRELIMINARY REVIEW
UNDER THE
AUTHORITY OF
CARA C. TACKETT
P.E. 89491
ON 1/31/2019.

DATE: JUNE 2019
DESIGNED BY: MP
DRAWN BY: MA
CHECKED BY: JO
SCALE:

**PAPE-DAWSON
ENGINEERS**

SAUL ANTONIO | AUSTIN | HOUSTON | FORT WORTH | DALLAS
AND THE LEO-430 | SAN ANTONIO, TX 78205 | 210.885.8888
TREE PLAN REGISTRATION APP 1 | TREE PLAN REGISTRATION APP 2

**SAN ANTONIO
WATER SYSTEM**

SAWS JOB NO. 15-4508
W-1 LEON CREEK: HWY 151 TO HWY 90
LOWER SEGMENT
TREE STAND DELINEATION PLAN

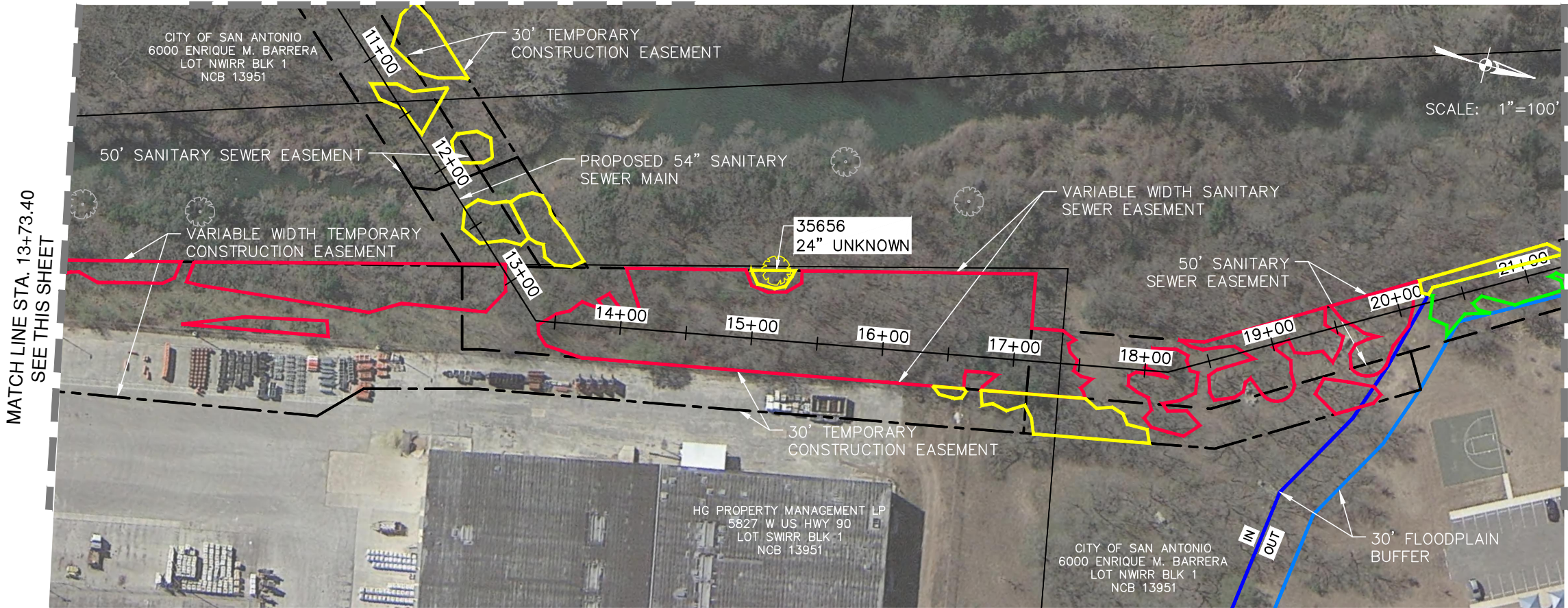
PLOTTED ON: 1/31/19

DESIGN FILENAME: P:\89\18\00\Design\Civil\Tree Preservation\190318 Tree Plan.dwg

MATCH LINE STA. 13+73.40
SEE THIS SHEET



MATCH LINE STA. 10+62.68
SEE SHEET TP-8



MATCH LINE STA. 21+29.76
SEE SHEET TP-4

LEGEND

- CANOPY TO BE REMOVED INSIDE FLOODPLAIN
- CANOPY TO BE PRESERVED INSIDE FLOODPLAIN
- CANOPY TO BE REMOVED INSIDE 30' BUFFER
- CANOPY TO BE PRESERVED INSIDE 30' BUFFER
- CANOPY TO BE REMOVED OUTSIDE FLOODPLAIN
- CANOPY TO BE PRESERVED OUTSIDE FLOODPLAIN
- HERITAGE TREE TO BE REMOVED
- HERITAGE TREE TO BE PRESERVED
- HERITAGE TREE NON-NATIVE
- PROPOSED SAN. SEWER
- PERMANENT SEWER ESMT
- TEMP CONSTRUCTION ESMT
- EXISTING SAWS EASEMENT
- 100-YEAR FLOODPLAIN
- 30' FLOODPLAIN BUFFER
- PROPERTY LINE

REVIEWS		APP.
NO.	DATE	
1	JUNE 2019	
DESIGNED BY: MP		DATE
DRAWN BY: MA		
CHECKED BY: JO		
SCALE:		

PAPE-DAWSON ENGINEERS
SAA, AUSTIN | AUSTIN | HOUSTON | FORT WORTH | DALLAS
AND THE LOOP-420 | SAN ANTONIO, TX 78205 | 214.222.8888
TYPE TREE RESTORATION (APR 1) TYPE TREE RESTORATION (APR 1)

SAN ANTONIO WATER SYSTEM

SAWS JOB NO. 15-4508
W-1 LEON CREEK: HWY 151 TO HWY 90
LOWER SEGMENT
TREE STAND DELINEATION PLAN

PLOTTED ON: 1/31/19

DESIGN FILENAME: P:\89\18\00\Design\Civil\Tree Preservation\190318 Tree Plan.dwg

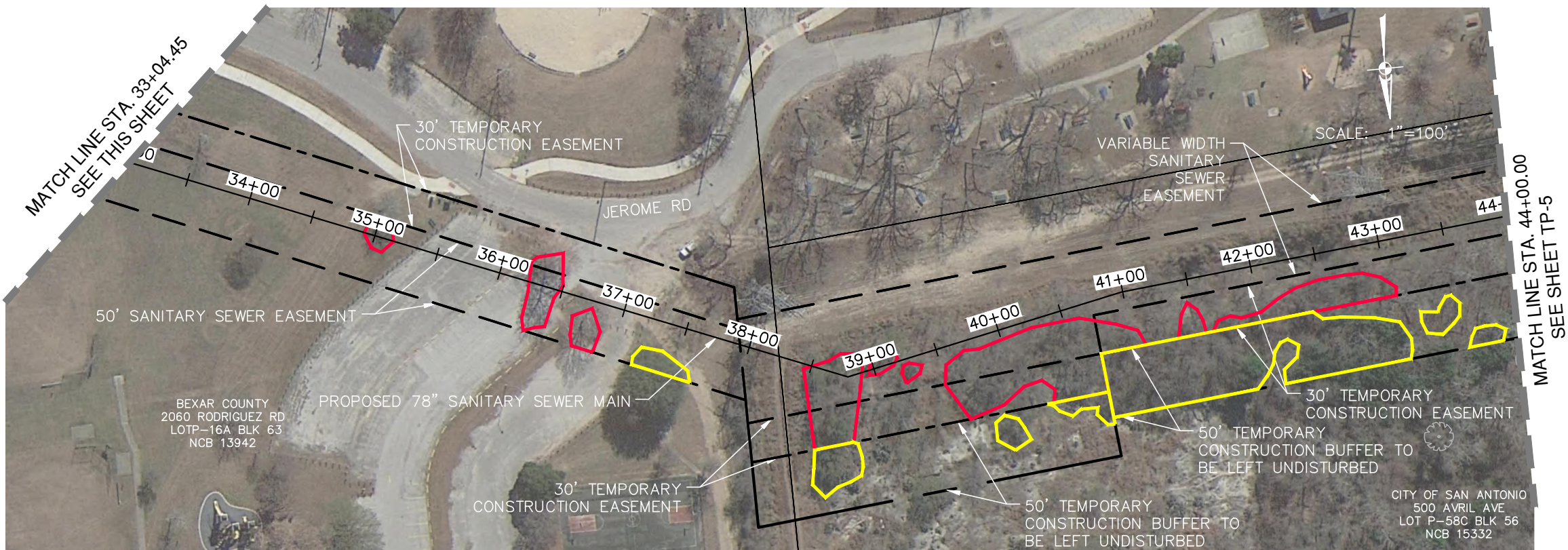


BEXAR COUNTY PARK NOTES

1. ALL TREES REMOVED WITHIN BEXAR COUNTY PARKS HAVE TO BE REPLACED WITH A TREE, MINIMUM 6-INCH CALIPER.
2. CONTRACTOR TO REFER TO C-16 TO C-17 FOR PARK TRAIL INFORMATION

LEGEND

- CANOPY TO BE REMOVED INSIDE FLOODPLAIN
- CANOPY TO BE PRESERVED INSIDE FLOODPLAIN
- CANOPY TO BE REMOVED INSIDE 30' BUFFER
- CANOPY TO BE PRESERVED INSIDE 30' BUFFER
- CANOPY TO BE REMOVED OUTSIDE FLOODPLAIN
- CANOPY TO BE PRESERVED OUTSIDE FLOODPLAIN
- HERITAGE TREE TO BE REMOVED
- HERITAGE TREE TO BE PRESERVED
- HERITAGE TREE NON-NATIVE
- PROPOSED SAN. SEWER
- PERMANENT SEWER ESMT
- TEMP CONSTRUCTION ESMT
- EXISTING SAWS EASEMENT
- 100-YEAR FLOODPLAIN
- 30' FLOODPLAIN BUFFER
- PROPERTY LINE



NO.		DATE	REVISIONS	APP.
1		JUNE 2019		
2				
3				
4				
5				
6				
7				
8				
9				
10				
11				
12				
13				
14				
15				
16				
17				
18				
19				
20				
21				
22				
23				
24				
25				
26				
27				
28				
29				
30				
31				
32				
33				
34				
35				
36				
37				
38				
39				
40				
41				
42				
43				
44				
45				
46				
47				
48				
49				
50				

PAPE-DAWSON
Job No.
8918-00

NOT FOR CONSTRUCTION

THIS DOCUMENT IS RELEASED FOR THE PURPOSE OF PRELIMINARY REVIEW UNDER THE AUTHORITY OF CARA C. TACKETT P.E. 89491 ON 1/31/2019.

DATE: JUNE 2019
DESIGNED BY: MP
DRAWN BY: MA
CHECKED BY: JO
SCALE:

PAPE-DAWSON ENGINEERS

3401 AUSTIN LANE, SUITE 100, AUSTIN, TEXAS 78746
PH: 512.454.1111 FAX: 512.454.1112
WWW.PAPE-DAWSON.COM

SAN ANTONIO WATER SYSTEM

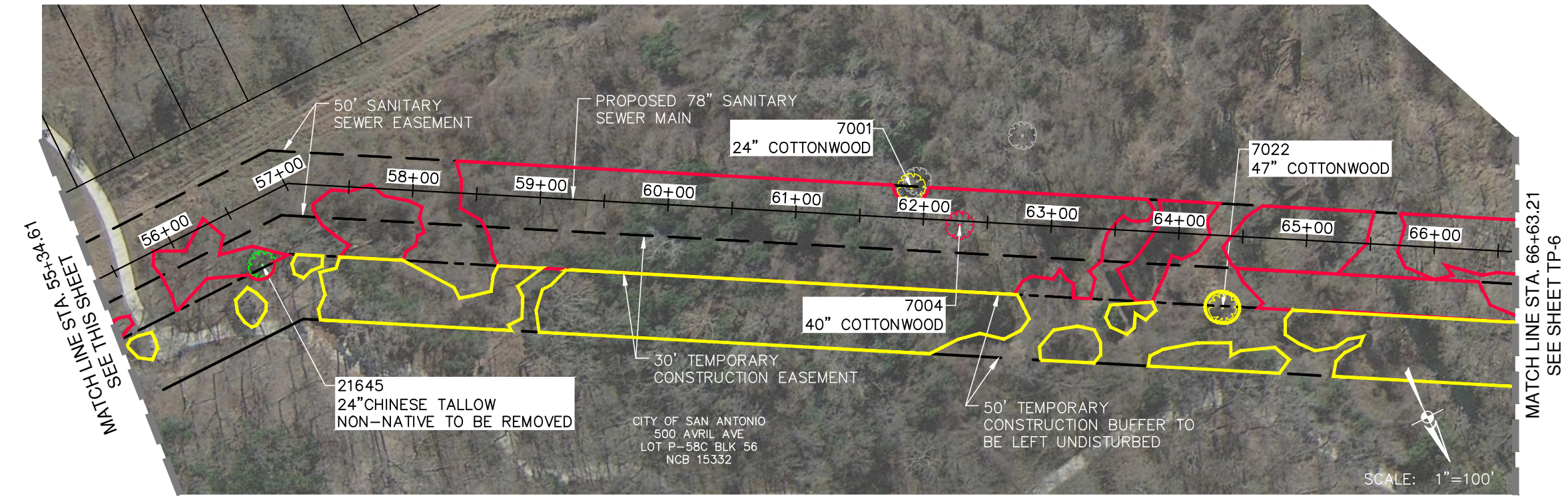
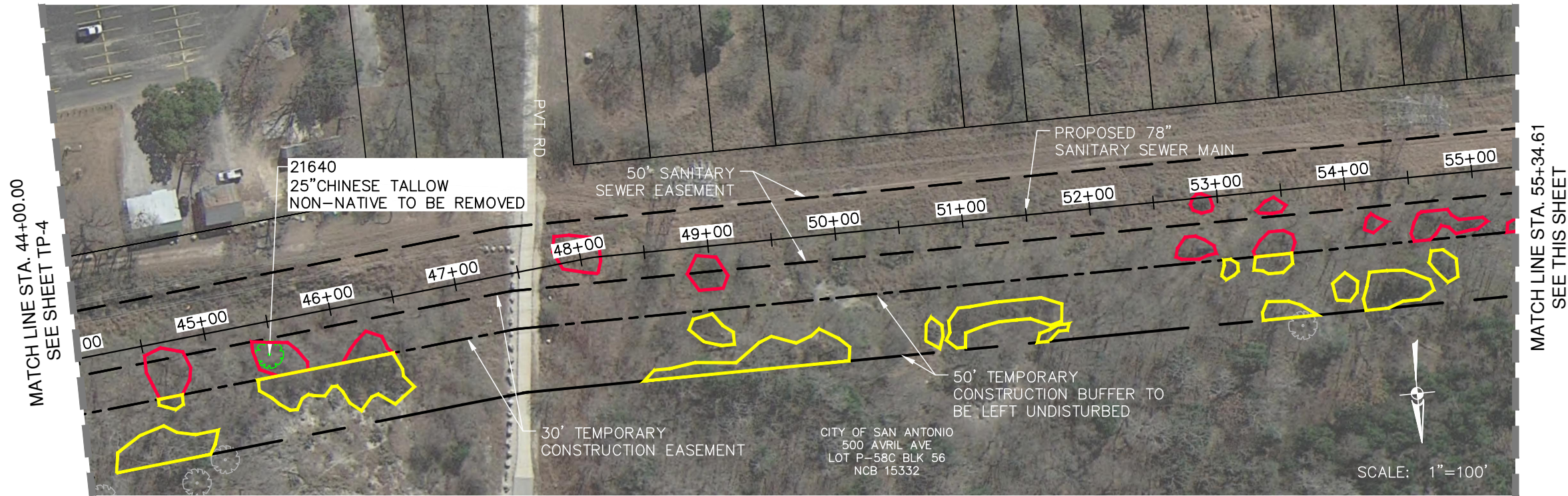
SAWS JOB NO. 15-4508
W-1 LEON CREEK: HWY 151 TO HWY 90
LOWER SEGMENT
TREE STAND DELINEATION PLAN

Sheet **TP-5**

71 of 81

PLOTTED ON: 1/31/19

DESIGN FILENAME: P:\89\18\00\Design\Civil\Tree Preservation\190318 Tree Plan.dwg



LEGEND

- CANOPY TO BE REMOVED INSIDE FLOODPLAIN (Red outline)
- CANOPY TO BE PRESERVED INSIDE FLOODPLAIN (Yellow outline)
- CANOPY TO BE REMOVED INSIDE 30' BUFFER (Pink outline)
- CANOPY TO BE PRESERVED INSIDE 30' BUFFER (Green outline)
- CANOPY TO BE REMOVED OUTSIDE FLOODPLAIN (Orange outline)
- CANOPY TO BE PRESERVED OUTSIDE FLOODPLAIN (Cyan outline)
- HERITAGE TREE TO BE REMOVED (Red flower symbol)
- HERITAGE TREE TO BE PRESERVED (Yellow flower symbol)
- HERITAGE TREE NON-NATIVE (Green flower symbol)
- PROPOSED SAN. SEWER (Dashed line)
- PERMANENT SEWER ESMT (Solid line)
- TEMP CONSTRUCTION ESMT (Dashed line with dots)
- EXISTING SAWS EASEMENT (Dashed line)
- 100-YEAR FLOODPLAIN (Blue line)
- 30' FLOODPLAIN BUFFER (Blue line)
- PROPERTY LINE (Thin black line)

NO.		DATE	REVISIONS	APP.

PAPE-DAWSON
Job No.
8918-00

NOT FOR
CONSTRUCTION

THIS DOCUMENT IS
RELEASED FOR
THE PURPOSE OF
PRELIMINARY REVIEW
UNDER THE
AUTHORITY OF
CARA C. TACKETT
P.E. 89491
ON 1/31/2019.

DATE: JUNE 2019
DESIGNED BY: MP
DRAWN BY: MA
CHECKED BY: JO
SCALE:

**PAPE-DAWSON
ENGINEERS**

3401 JACOBSON LANE, SUITE 100, HOUSTON, TEXAS 77057
713.861.1111
WWW.PAPE-DAWSON.COM

**SAN ANTONIO
WATER SYSTEM**

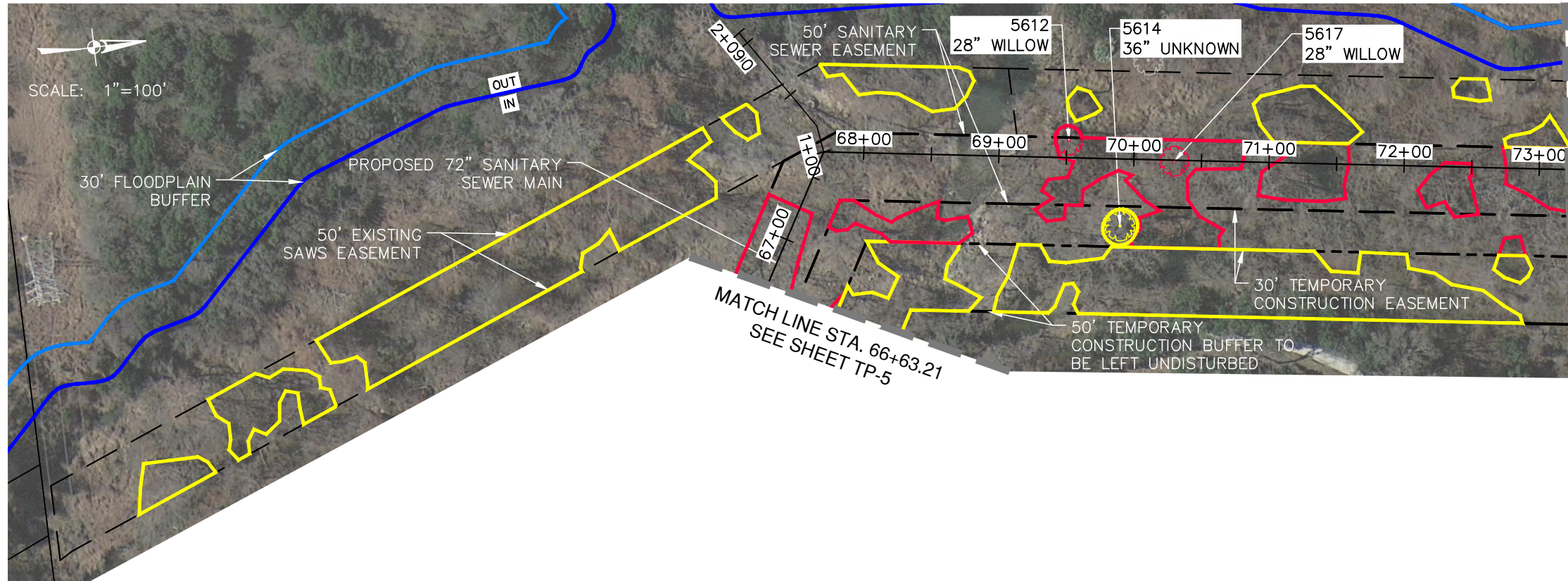
SAWS JOB NO. 15-4508
W-1 LEON CREEK: HWY 151 TO HWY 90
LOWER SEGMENT
TREE STAND DELINEATION PLAN

Sheet TP-6

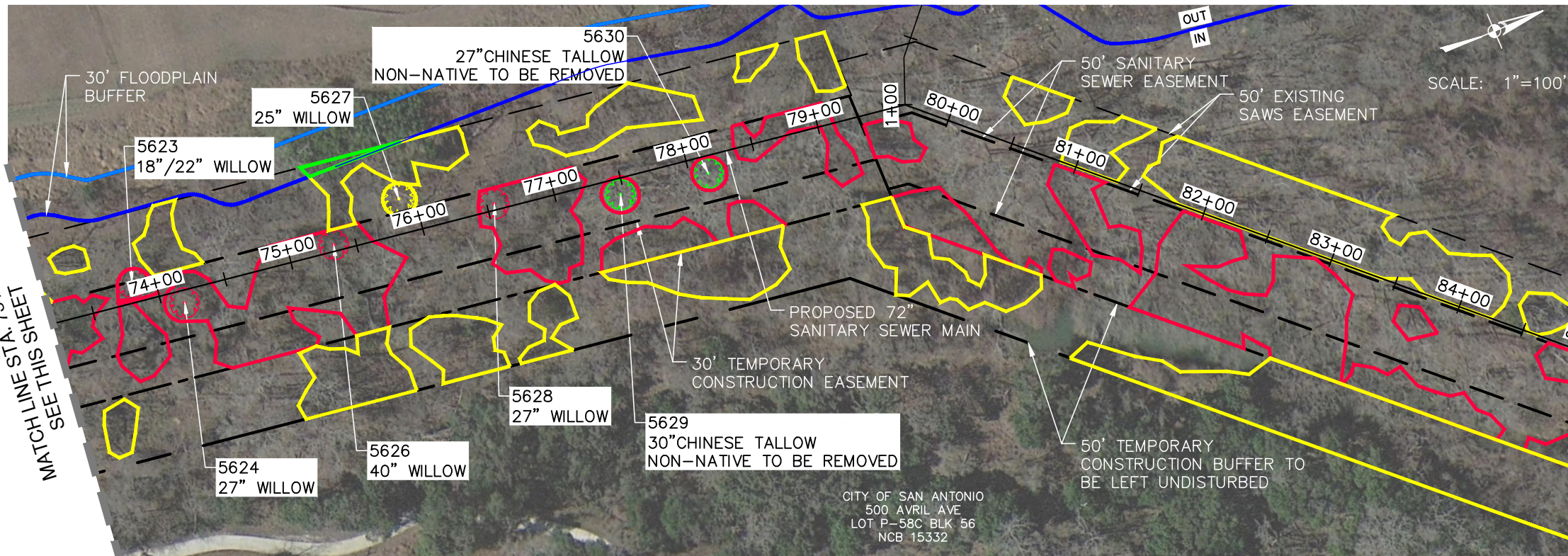
72 of 81

PLOTTED ON: 1/31/19

DESIGN FILENAME: P:\89\18\00\Design\Civil\Tree Preservation\190318 Tree Plan.dwg



MATCH LINE STA. 73+21.84
SEE THIS SHEET



MATCH LINE STA. 84+90.80
SEE SHEET TP-7

LEGEND

CANOPY TO BE REMOVED INSIDE FLOODPLAIN	
CANOPY TO BE PRESERVED INSIDE FLOODPLAIN	
CANOPY TO BE REMOVED INSIDE 30' BUFFER	
CANOPY TO BE PRESERVED INSIDE 30' BUFFER	
CANOPY TO BE REMOVED OUTSIDE FLOODPLAIN	
CANOPY TO BE PRESERVED OUTSIDE FLOODPLAIN	
HERITAGE TREE TO BE REMOVED	
HERITAGE TREE TO BE PRESERVED	
HERITAGE TREE NON-NATIVE	
PROPOSED SAN. SEWER	
PERMANENT SEWER ESMT	
TEMP CONSTRUCTION ESMT	
EXISTING SAWS EASEMENT	
100-YEAR FLOODPLAIN	
30' FLOODPLAIN BUFFER	
PROPERTY LINE	

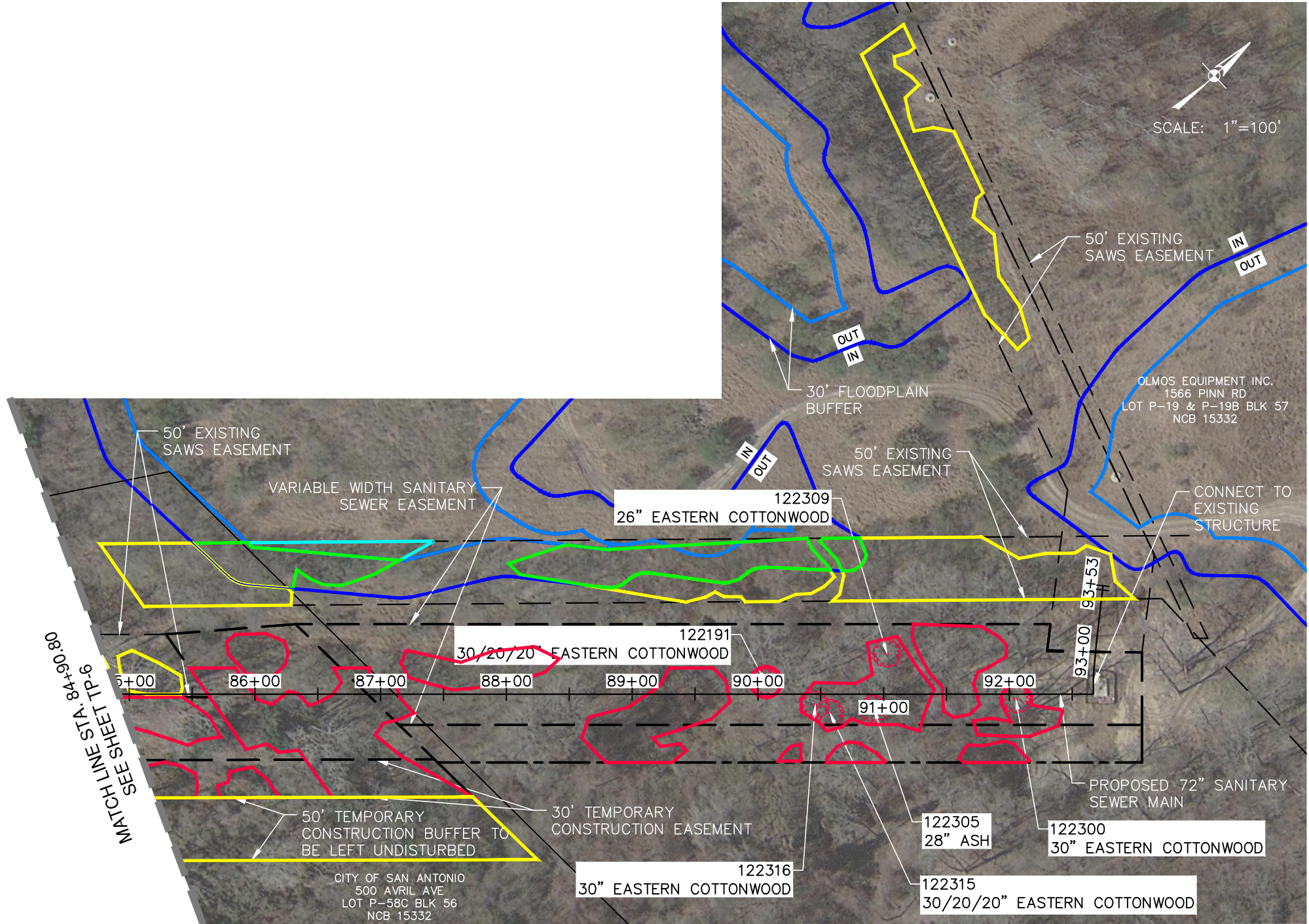
PAPE-DAWSON Job No. 8918-00	
NOT FOR CONSTRUCTION THIS DOCUMENT IS RELEASED FOR THE PURPOSE OF PRELIMINARY REVIEW UNDER THE AUTHORITY OF CARA C. TACKETT P.E. 89491 ON 1/31/2019.	
NO.	DATE
DATE: JUNE 2019	DESIGNED BY: MP
DRAWN BY: MA	CHECKED BY: JO
SCALE:	

PAPE-DAWSON ENGINEERS
3401 AUSTIN LANE, SUITE 100, AUSTIN, TEXAS 78746
PH: 512.452.1111 FAX: 512.452.1112
WWW.PAPE-DAWSON.COM

SAN ANTONIO WATER SYSTEM

**SAWS JOB NO. 15-4508
W-1 LEON CREEK: HWY 151 TO HWY 90
LOWER SEGMENT
TREE STAND DELINEATION PLAN**

Sheet **TP-7**
73 of **81**



LEGEND

- CANOPY TO BE REMOVED INSIDE FLOODPLAIN
- CANOPY TO BE PRESERVED INSIDE FLOODPLAIN
- CANOPY TO BE REMOVED INSIDE 30' BUFFER
- CANOPY TO BE PRESERVED INSIDE 30' BUFFER
- CANOPY TO BE REMOVED OUTSIDE FLOODPLAIN
- CANOPY TO BE PRESERVED OUTSIDE FLOODPLAIN
- HERITAGE TREE TO BE REMOVED
- HERITAGE TREE TO BE PRESERVED
- HERITAGE TREE NON-NATIVE
- PROPOSED SAN. SEWER
- PERMANENT SEWER ESMT
- TEMP CONSTRUCTION ESMT
- EXISTING SAWS EASEMENT
- 100-YEAR FLOODPLAIN
- 30' FLOODPLAIN BUFFER
- PROPERTY LINE

NO. | DATE

DATE: JUNE 2019

DESIGNED BY: MP

DRAWN BY: MA

CHECKED BY: JO

SCALE:

REVISIONS

APP.

PAPE-DAWSON

Job No.

8918-00

NOT FOR CONSTRUCTION

THIS DOCUMENT IS RELEASED FOR THE PURPOSE OF PRELIMINARY REVIEW UNDER THE AUTHORITY OF CARA C. TACKETT P.E. 89491 ON 1/31/2019.

PAPE-DAWSON ENGINEERS

3401 AUSTIN I. HENDERSON STREET, SUITE 100, AUSTIN, TX 78704

SAN ANTONIO WATER SYSTEM

SAWS JOB NO. 15-4508

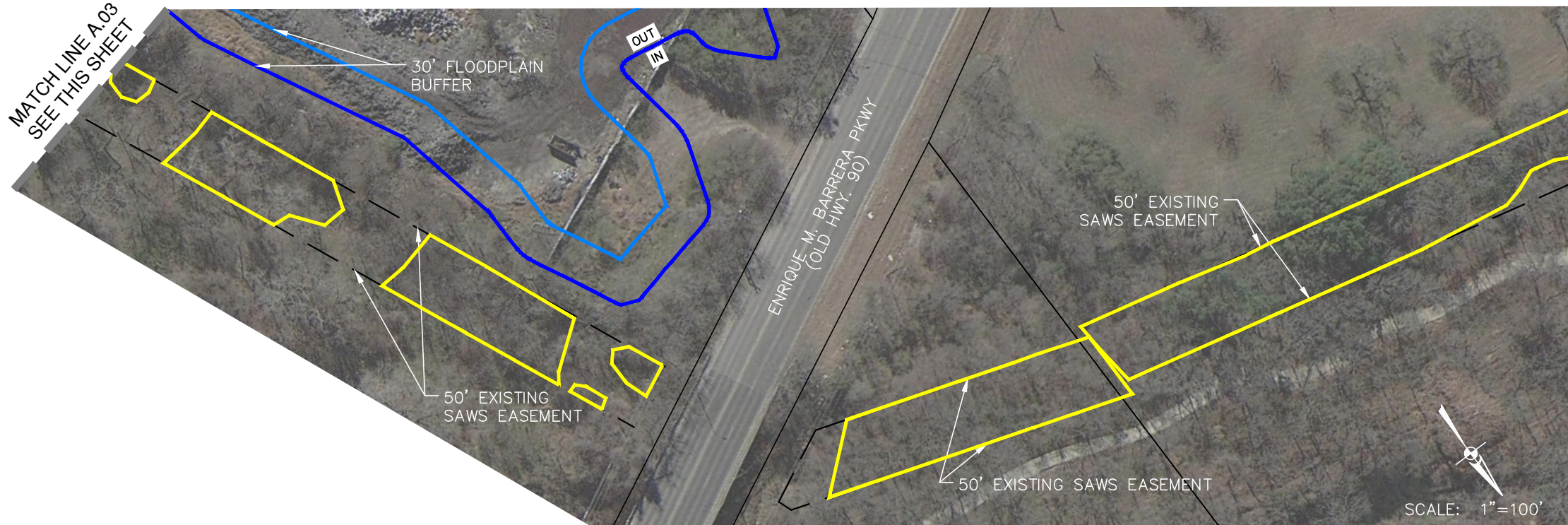
W-1 LEON CREEK: HWY 151 TO HWY 90






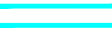













LOWER SEGMENT

TREE STAND DELINEATION PLAN

Sheet TP-8

74 of 81



CANOPY TO BE REMOVED INSIDE FLOODPLAIN	
CANOPY TO BE PRESERVED INSIDE FLOODPLAIN	
CANOPY TO BE REMOVED INSIDE 30' BUFFER	
CANOPY TO BE PRESERVED INSIDE 30' BUFFER	
CANOPY TO BE REMOVED OUTSIDE FLOODPLAIN	
CANOPY TO BE PRESERVED OUTSIDE FLOODPLAIN	
HERITAGE TREE TO BE REMOVED	
HERITAGE TREE TO BE PRESERVED	
HERITAGE TREE NON-NATIVE	
PROPOSED SAN. SEWER	
PERMANENT SEWER ESMT	 
TEMP CONSTRUCTION ESMT	 
EXISTING SAWS EASEMENT	 
100-YEAR FLOODPLAIN	
30' FLOODPLAIN BUFFER	
PROPERTY LINE	

MATCH LINE A.04
SEE SHEET TP-9

**PAPE-DAWSON
ENGINEERS**

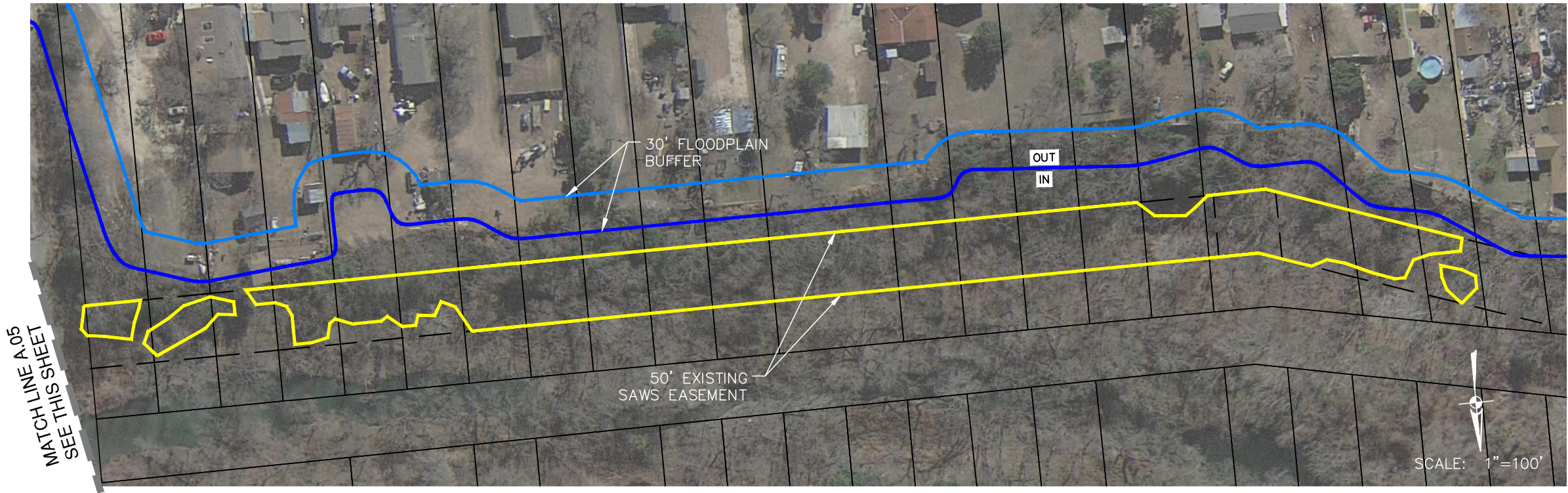


SAN ANTONIO
WATER SYSTEM

Sheet TP-9
75 of 81

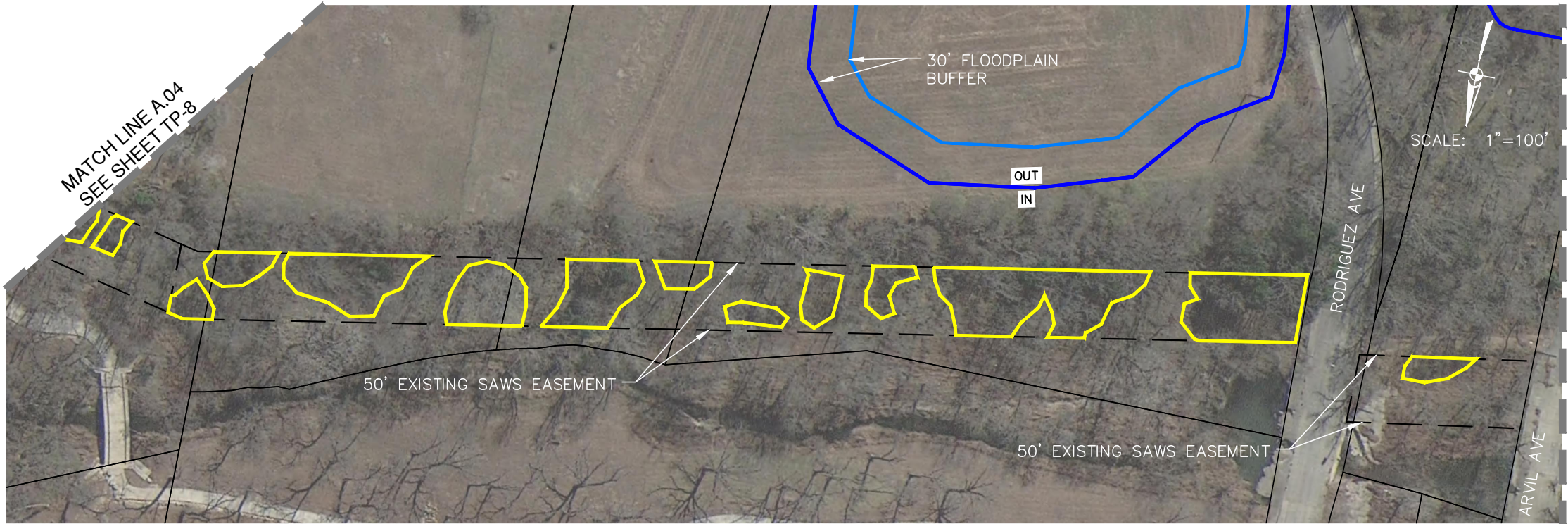
PLOTTED ON: 1/31/19

DESIGN FILENAME: P:\89\18\00\Design\Civil\Tree Preservation\190318 Tree Plan.dwg



LEGEND

- CANOPY TO BE REMOVED INSIDE FLOODPLAIN
- CANOPY TO BE PRESERVED INSIDE FLOODPLAIN
- CANOPY TO BE REMOVED INSIDE 30' BUFFER
- CANOPY TO BE PRESERVED INSIDE 30' BUFFER
- CANOPY TO BE REMOVED OUTSIDE FLOODPLAIN
- CANOPY TO BE PRESERVED OUTSIDE FLOODPLAIN
- HERITAGE TREE TO BE REMOVED
- HERITAGE TREE TO BE PRESERVED
- HERITAGE TREE NON-NATIVE
- PROPOSED SAN. SEWER
- PERMANENT SEWER ESMT
- TEMP CONSTRUCTION ESMT
- EXISTING SAWS EASEMENT
- 100-YEAR FLOODPLAIN
- 30' FLOODPLAIN BUFFER
- PROPERTY LINE



NO.		DATE	REVISIONS	APP.
		JUNE 2019		PAPE-DAWSON
		DESIGNED BY: MP		Job No.
		DRAWN BY: MA		8918-00
		CHECKED BY: JO		
		SCALE:		

PAPE-DAWSON

ENGINEERS

3401 JANTONIA AVE. SUITE 100

AUSTIN, TEXAS 78741

PH: 512.454.1111

WWW.PAPE-DAWSON.COM

NOT FOR CONSTRUCTION

THIS DOCUMENT IS RELEASED FOR THE PURPOSE OF PRELIMINARY REVIEW UNDER THE AUTHORITY OF CARA C. TACKETT P.E. 89491 ON 1/31/2019.

SAN ANTONIO

WATER SYSTEM

SAWS JOB NO. 15-4508
W-1 LEON CREEK: HWY 151 TO HWY 90
LOWER SEGMENT
TREE STAND DELINEATION PLAN

PLOTTED ON: 1/31/19

DESIGN FILENAME: P:\89\18\00\Design\Civil\Tree Preservation\190423 Native Seed Mixture Plan.dwg

MATCH LINE STA. 13+73.40
SEE THIS SHEET



MATCH LINE STA. 10+62.68
SEE SHEET TP-8

MATCH LINE STA. 13+73.40
SEE THIS SHEET



MATCH LINE STA. 21+29.76
SEE SHEET TP-11

LEGEND

- AREA TO BE SEEDD WITH NATIVE SEED MIXTURE
- PROPOSED SAN. SEWER
- PERMANENT SEWER ESMT
- TEMP CONSTRUCTION ESMT
- EXISTING SAWS EASEMENT
- 100-YEAR FLOODPLAIN
- PROPERTY LINE

NO.	DATE	REVISIONS	APP.

PAPE-DAWSON
Job No.
8918-00

NOT FOR
CONSTRUCTION
THIS DOCUMENT IS
RELEASED FOR
THE PURPOSE OF
PRELIMINARY REVIEW
UNDER THE
AUTHORITY OF
CARA C. TACKETT
P.E. 89491
ON 1/31/2019.

DATE: JUNE 2019
DESIGNED BY: MP
DRAWN BY: MA
CHECKED BY: JO
SCALE:

PAPE-DAWSON

ENGINEERS

SAN ANTONIO • AUSTIN • HOUSTON • FORT WORTH • DALLAS

2000 THE LOOP • 4TH FLOOR • SAN ANTONIO, TX 78205 • 210.223.8888

TYPE YOUR NOTIFICATION HERE • 1 TYPICAL NOTIFICATION (PENDING)

SAN ANTONIO

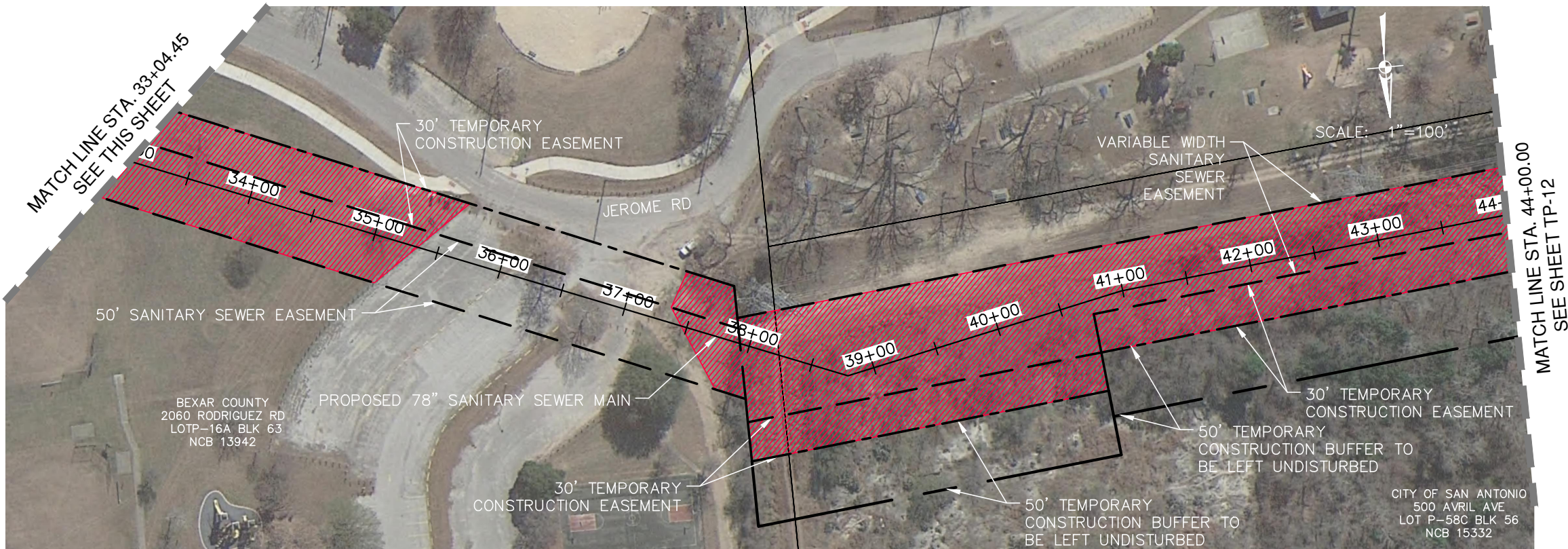
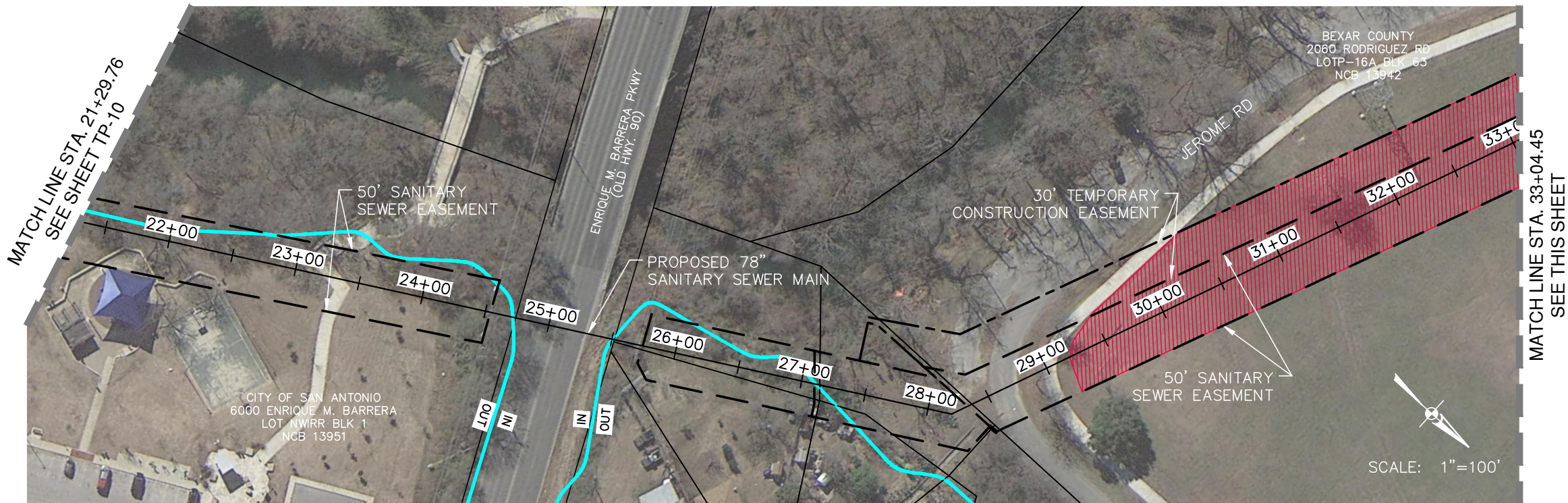
WATER SYSTEM

SAWS JOB NO. 15-4508
W-1 LEON CREEK: HWY 151 TO HWY 90
LOWER SEGMENT
NATIVE SEED MIXTURE PLAN

Sheet TP-11

PLOTTED ON: 1/31/19

DESIGN FILENAME: P:\89\18\00\Design\Civil\Tree Preservation\190423 Native Seed Mixture Plan.dwg



LEGEND

AREA TO BE SEEDD WITH NATIVE SEED MIXTURE	
PROPOSED SAN. SEWER	
PERMANENT SEWER ESMT	
TEMP CONSTRUCTION ESMT	
EXISTING SAWS EASEMENT	
100-YEAR FLOODPLAIN	
PROPERTY LINE	

NO.	DATE	REVISIONS	APP.

PAPE-DAWSON
Job No.
8918-00

NOT FOR
CONSTRUCTION

THIS DOCUMENT IS
RELEASED FOR
THE PURPOSE OF
PRELIMINARY REVIEW
UNDER THE
AUTHORITY OF
CARA C. TACKETT
P.E. 89491
ON 1/31/2019.

DATE: JUNE 2019
DESIGNED BY: MP
DRAWN BY: MA
CHECKED BY: JO
SCALE:

**PAPE-DAWSON
ENGINEERS**

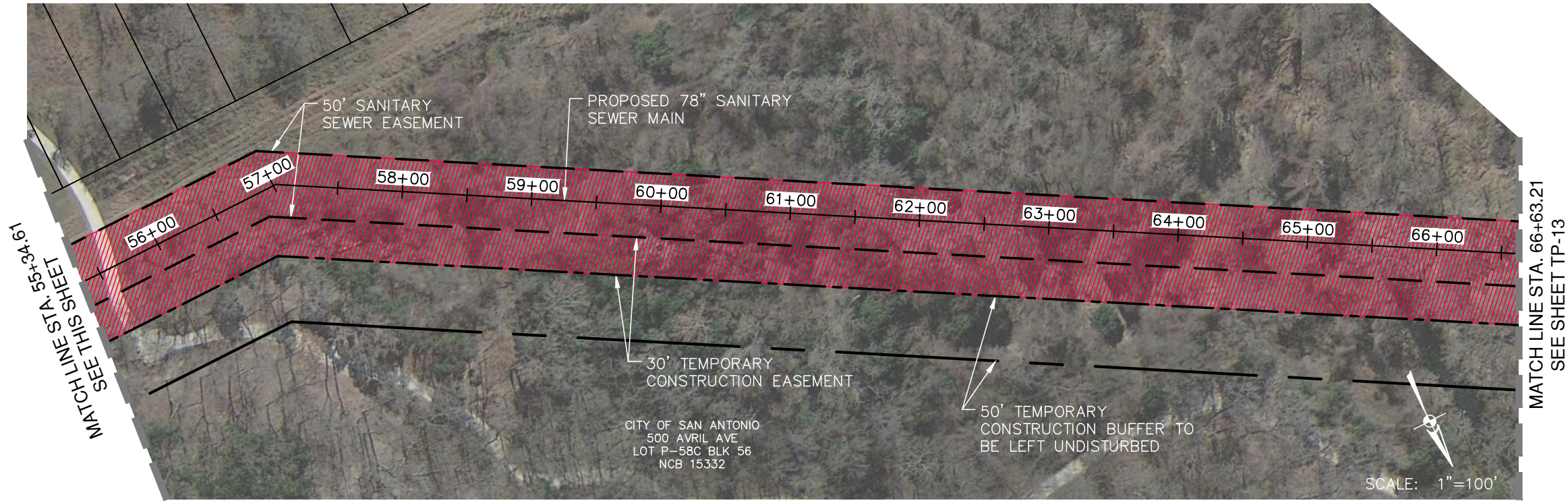
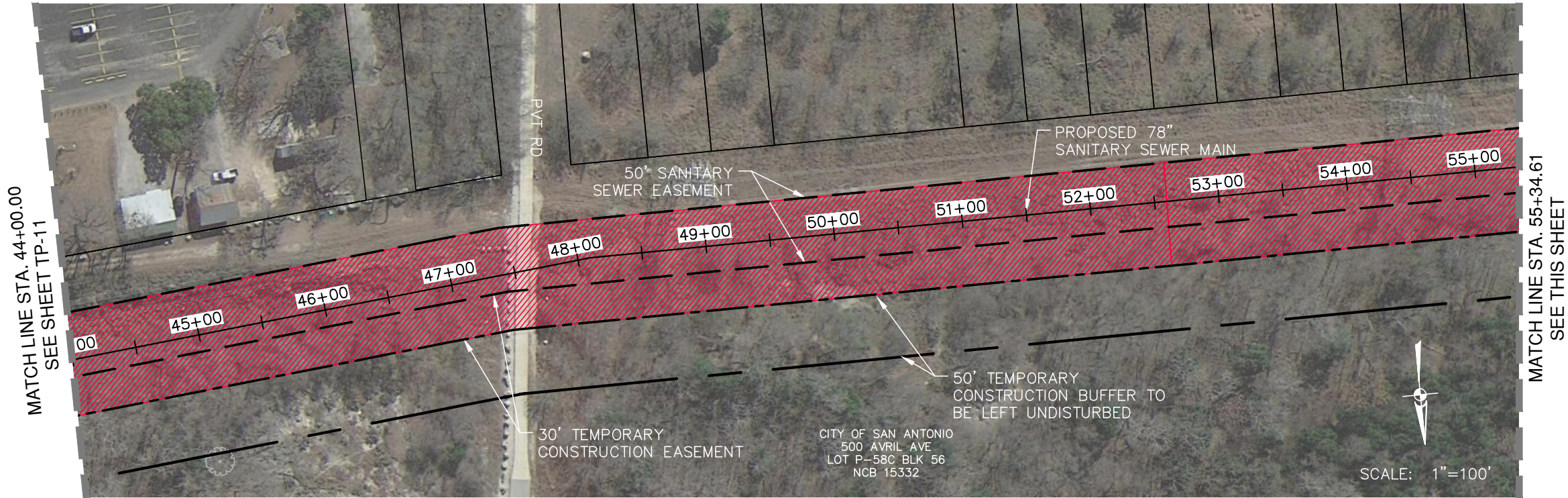
SAUL ANTONIO | AUSTIN | HOUSTON | FORT WORTH | DALLAS
ARND THE LOOP 420 | SAN ANTONIO, TX 78205 | 214.888.8888
TREE PRESERVATION APP | TREE PRESERVATION APP

**SAN ANTONIO
WATER SYSTEM**

SAWS JOB NO. 15-4508
W-1 LEON CREEK: HWY 151 TO HWY 90
LOWER SEGMENT
NATIVE SEED MIXTURE PLAN

PLOTTED ON: 1/31/19

DESIGN FILENAME: P:\89\18\00\Design\Civil\Tree Preservation\190423 Native Seed Mixture Plan.dwg



LEGEND

AREA TO BE SEEDED WITH NATIVE SEED MIXTURE	
PROPOSED SAN. SEWER	
PERMANENT SEWER ESMT	
TEMP CONSTRUCTION ESMT	
EXISTING SAWS EASEMENT	
100-YEAR FLOODPLAIN	
PROPERTY LINE	

NO.	DATE	REVISED	APP.

PAPE-DAWSON
Job No.

8918-00

NOT FOR
CONSTRUCTION

THIS DOCUMENT IS
RELEASED FOR
THE PURPOSE OF
PRELIMINARY REVIEW
UNDER THE
AUTHORITY OF
CARA C. TACKETT
P.E. 89491
ON 1/31/2019.

DATE: JUNE 2019
DESIGNED BY: MP
DRAWN BY: MA
CHECKED BY: JO
SCALE:

**PAPE-DAWSON
ENGINEERS**

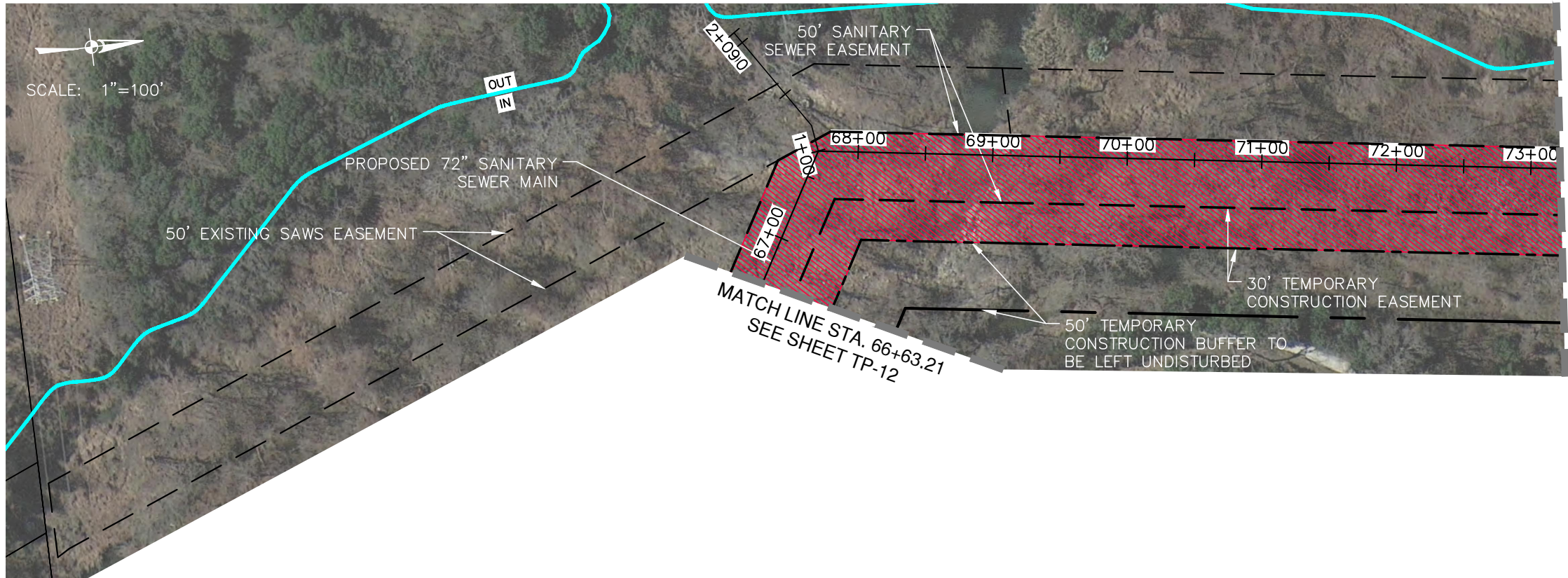
SAN ANTONIO | AUSTIN | HOUSTON | FORT WORTH | DALLAS
AND THE LOOP 410 | SAN ANTONIO, TX 78205 | 210.223.8888
TYPE FROM REGISTRATION APP 1 TYPE FROM REGISTRATION APP 2

**SAN ANTONIO
WATER SYSTEM**

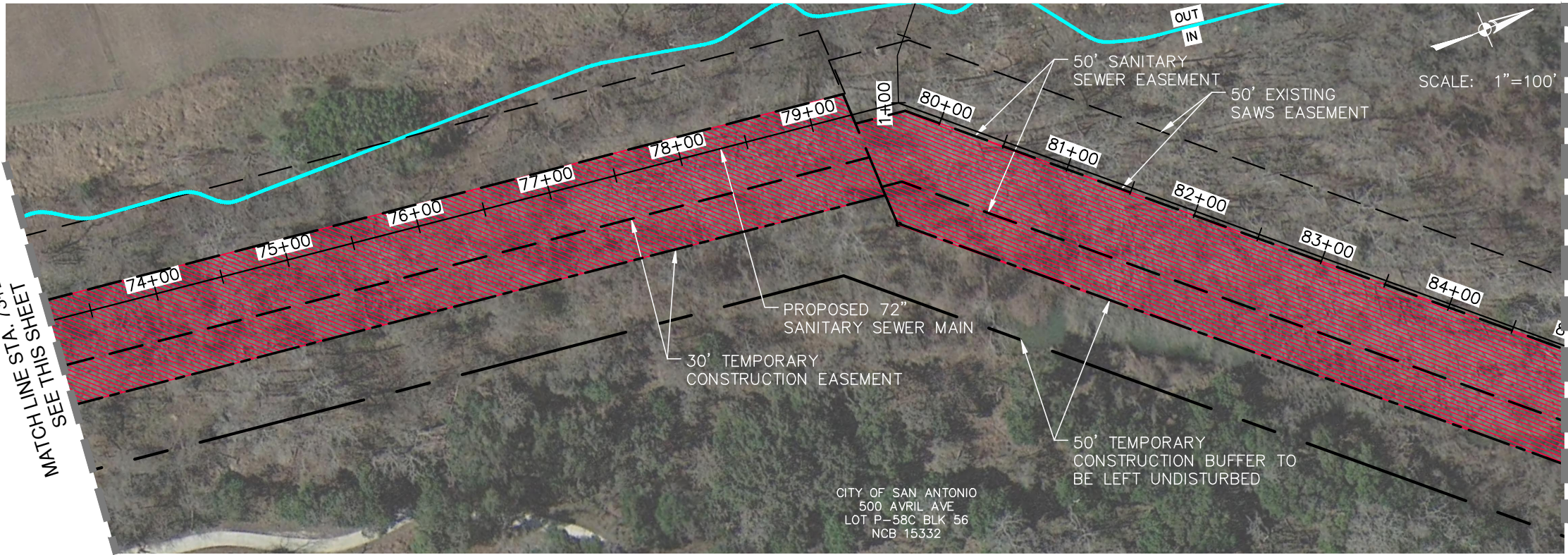
SAWS JOB NO. 15-4508
W-1 LEON CREEK: HWY 151 TO HWY 90
LOWER SEGMENT
NATIVE SEED MIXTURE PLAN

Sheet TP-13

79 of 81



MATCH LINE STA. 73+21.84
SEE THIS SHEET



MATCH LINE STA. 84+90.80
SEE SHEET TP-14

LEGEND

- AREA TO BE SEEDED WITH NATIVE SEED MIXTURE
- PROPOSED SAN. SEWER
- PERMANENT SEWER ESMT
- TEMP CONSTRUCTION ESMT
- EXISTING SAWS EASEMENT
- 100-YEAR FLOODPLAIN
- PROPERTY LINE

NO.		DATE	REVISIONS	APP.
		JUNE 2019		PAPE-DAWSON
		DESIGNED BY: MP		Job No.
		DRAWN BY: MA		8918-00
		CHECKED BY: JO		
		SCALE:		

PAPE-DAWSON

ENGINEERS

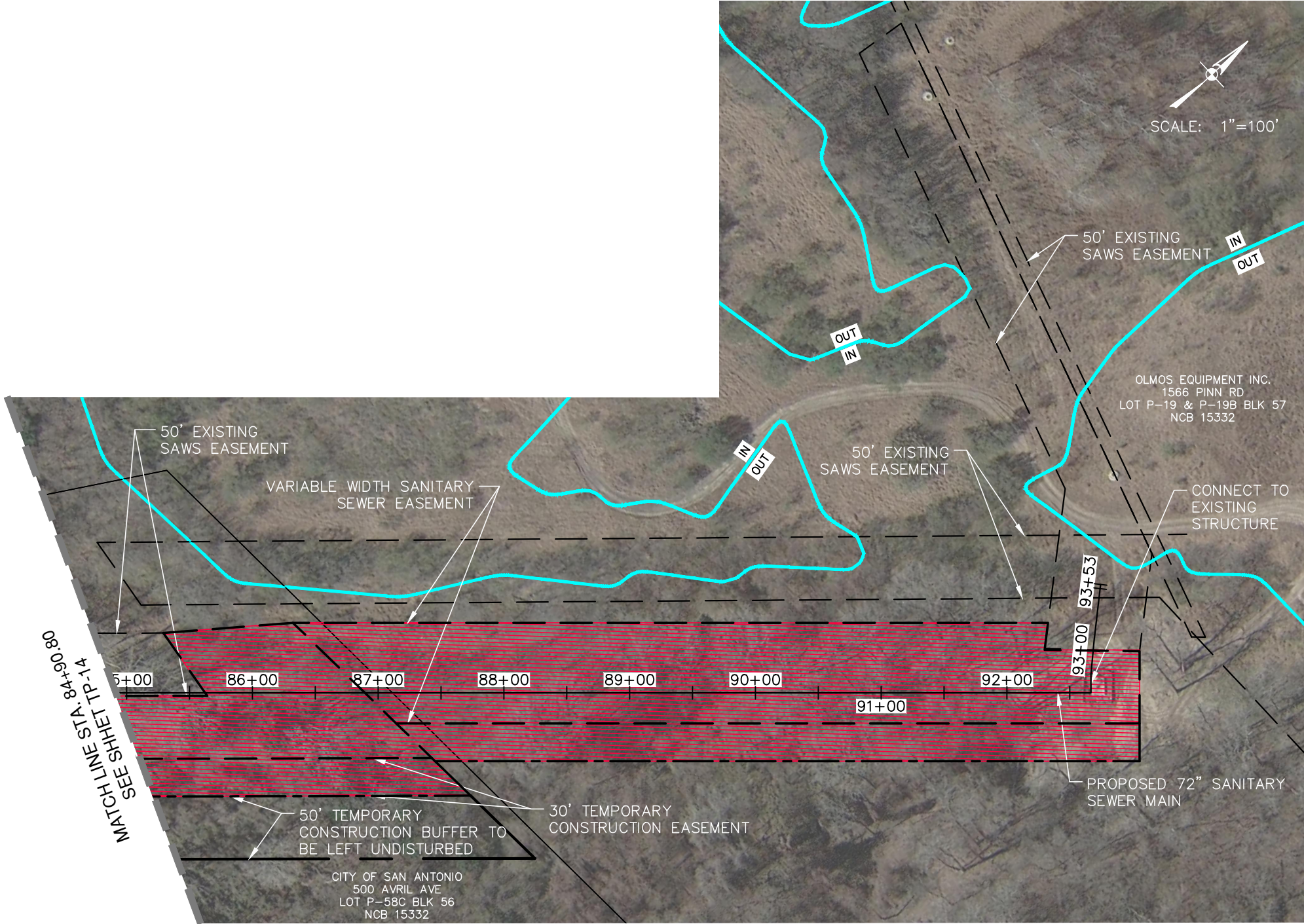
SAN ANTONIO • AUSTIN • HOUSTON • FORT WORTH • DALLAS

AND THE LOOP • 4301 E. SAN ANTONIO, TX 78205 • 817.552.2800

TYPE TREE RESTORATION (APR 1) TYPE-FIRM RESTORATION (FIRMED)



SAWS JOB NO. 15-4508
W-1 LEON CREEK: HWY 151 TO HWY 90
LOWER SEGMENT
NATIVE SEED MIXTURE PLAN



LEGEND

AREA TO BE SEEDED WITH NATIVE SEED MIXTURE	
PROPOSED SAN. SEWER	
PERMANENT SEWER ESMT	
TEMP CONSTRUCTION ESMT	
EXISTING SAWS EASEMENT	
100-YEAR FLOODPLAIN	
PROPERTY LINE	

NO.	DATE	REVISIONS	APP.

PAPE-DAWSON
 Job No.
 8918-00

NOT FOR
 CONSTRUCTION
 THIS DOCUMENT IS
 RELEASED FOR
 THE PURPOSE OF
 PRELIMINARY REVIEW
 UNDER THE
 AUTHORITY OF
 CARA C. TACKETT
 P.E. 89491
 ON 1/31/2019.

DATE: JUNE 2019	NO.	DATE
DESIGNED BY: MP		
DRAWN BY: MA		
CHECKED BY: JO		
SCALE:		

PAPE-DAWSON
 ENGINEERS
 2401 AUSTIN | AUSTIN | HOUSTON | FORT WORTH | DALLAS
 AND THE LEO-430 | SAN ANTONIO, TX 78205 | 817.222.2222
 TYPE FROM REGISTRATION (APR 1) TYPE FROM REGISTRATION (APR 1)

SAN ANTONIO
 WATER SYSTEM

SAWS JOB NO. 15-4508
 W-1 LEON CREEK: HWY 151 TO HWY 90
 LOWER SEGMENT
 NATIVE SEED MIXTURE PLAN